



Skillscraft

**BUILD
COMPETITION**

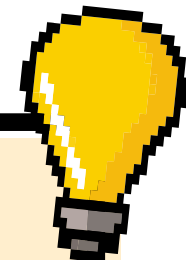
Briefs and guidelines

INTRODUCTION

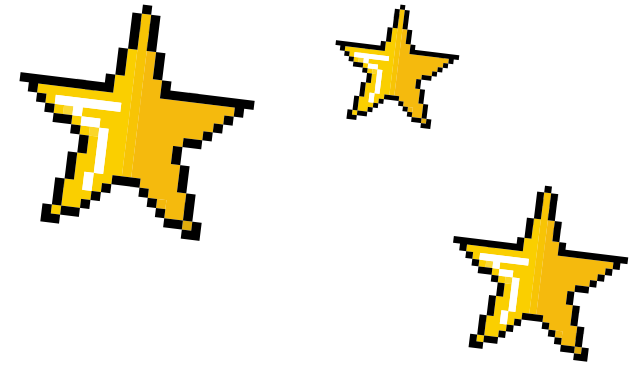
Schools across Scotland will be participating in a Minecraft Education competition, run by Skills Development Scotland.

WHEN?

The competition will run throughout April and May, with a submission deadline of **24th May 2024.**



WINNERS



- **2 main prize winners**
 - 1 from primary aged
 - 1 from secondary aged
- **6 runners up**
 - 1 for each sector for primary aged
 - 1 for each sector for secondary aged
- **Winning teams will have their solutions added into our Minecraft world**

PRIZES

■ Main winners will receive:

- their build added to our Minecraft world
- a trophy for their school
- £50 voucher for each team member (three)



■ Runners up will receive

- a trophy for their school
- £20 voucher for each team member (three)

HOW IT WORKS

- **Teacher will divide the class into teams of three**
- **Each person will have a different role (roles can be rotated at different points in the build)**
 - Designer – create plan and design of build on grid paper
 - Project manager – ensure the project remains on track and that all players are participating
 - Builder – lead the build on Minecraft Education



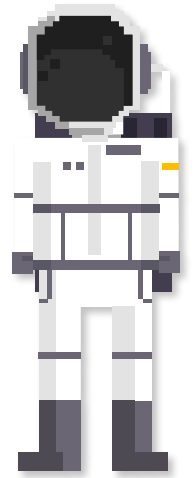
WHAT IS THE MISSION?

- **There are three briefs to choose from, each one corresponds to a sector and minigame.**
 - Space Technology – design and build the first moon colony.
 - Sustainable Construction – create a sustainable resort and tourist destination.
 - Renewable Energy – power a music festival using renewable energy.
- **Choose which one you'd like to do and view the full brief on the next slides.**

BRIEF 1 - SPACE TECHNOLOGY

Design and build the first moon colony.

You're the first people to live on the moon! You now need to design and build a small moon village or colony, that can support a small population in space. Think about what materials can withstand the environment, what is cost-effective to transport into space, and how to sustain a population in terms of energy, food etc.



BRIEF 2 - SUSTAINABLE CONSTRUCTION

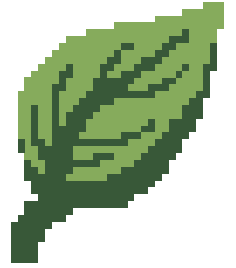
Create a sustainable resort and tourist destination.



Build your vision for a sustainable tourist destination in Scotland. Think about your favourite places and how they could be made sustainable. Consider how this will work in harmony with the local wildlife, whilst remaining a fun experience for everyone who visits! Think about the materials you're using to build, as well as what will make an attractive destination for tourists and visitors alike.

BRIEF 3 - RENEWABLE ENERGY

Power a music festival using renewable energy.



You have been tasked with powering a festival using only renewable energy sources. Think about what you've learned so far, and how wind power can be used. You may want to explore other renewable energy sources and how these can also be used. Use your knowledge to build your own working demonstrations of these in Minecraft and connecting them to the festival main stage!

WHAT WE'RE LOOKING FOR

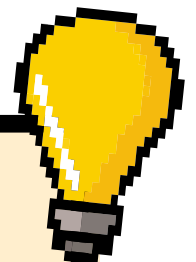
FEATURES TO INCLUDE	GOOD	EXCELLENT	MINECRAFT MASTERS
NPC GUIDES	<ul style="list-style-type: none"> ■ NPC guides for 1 listed job roles ■ Each NPC explains their job role ■ 1x URL button for more information 	<ul style="list-style-type: none"> ■ NPC guides for 2 listed job roles ■ Each NPC explains their job role ■ 1x URL button for more information ■ 1x command button to teleport user to a feature of the build 	<ul style="list-style-type: none"> ■ NPC guides for 3 listed job roles ■ Each NPC explains their job role ■ 2 x URL button for more information ■ 1 x command button to teleport user to a feature of the build
DESIGN {AS GRID PAPER}	<ul style="list-style-type: none"> ■ Includes: <ul style="list-style-type: none"> ○ Key for materials used ○ Plan for build of 1 area ○ Location of NPCs 	<ul style="list-style-type: none"> ■ Includes: <ul style="list-style-type: none"> ○ Key for materials used ○ Plan for build of 1 area ○ Plan for build of 2 areas ○ Location of NPCs 	<ul style="list-style-type: none"> ■ Includes: <ul style="list-style-type: none"> ○ Key for materials used ○ Plan for build of 1 area ○ Plan for build of 2 areas ○ Plan for build of 3 areas ○ Location of NPCs
BUILD	<ul style="list-style-type: none"> ■ Must include <ul style="list-style-type: none"> ○ Main build feature ○ 1 x NPCs 	<ul style="list-style-type: none"> ■ Must include <ul style="list-style-type: none"> ○ Main build feature ○ Secondary build feature ○ 2 x NPCs 	<ul style="list-style-type: none"> ■ Must include <ul style="list-style-type: none"> ○ Main build feature ○ Secondary build feature ○ Additional build feature ○ 3 x NPCs
<u>BOOK & QUILL</u>	<ul style="list-style-type: none"> ■ Documents the building ■ Must include each teammates contribution to the build ■ Minimum of 2 pages ■ Minimum of 2 photos 	<ul style="list-style-type: none"> ■ Documents the building ■ Must include each teammates contribution to the build ■ Minimum of 3 pages ■ Minimum of 3 photos 	<ul style="list-style-type: none"> ■ Documents the building ■ Must include each teammates contribution to the build ■ Minimum of 4 pages ■ Minimum of 4 photos
MINECRAFT SUPERSTAR BONUS POINTS	<ul style="list-style-type: none"> ■ Use of <ul style="list-style-type: none"> ○ Redstone ○ Pistons ○ Coding ○ Floating structures 		

HOW TO ENTER

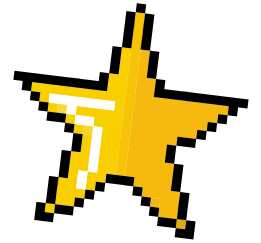
- **Each school can submit up to three entries**
(one per year group is recommended, but this is not mandatory)
- **Each entry should be a short YouTube video submission, which **MUST** be three minutes or less**
 - Submissions over three minutes will not be considered
 - We will only accept video entries

SUBMIT BY

24th May 2024

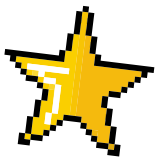


VIDEO GUIDELINES



■ Each video should highlight:

- Design process – how did your team come up with your solution and what was the thinking behind it
(20% weighting)
- Team working – how did your team work together and allocate tasks and responsibilities **(10% weighting)**
- Skills developed – what meta-skills did you use during your challenge **(10% weighting)**
- Build solution – short fly through of final build highlighting key parts **(60% weighting)**



SUBMISSION

- **Entry videos should be hosted on YouTube**
 - Email your video to minecraft@sds.co.uk
 - Only submit your video – not the world
 - Include your school, team name and individual names in the email
- **Winner will be announced by 21st June 2024**



SUBMIT TO

minecraft@sds.co.uk

