

**School Leaver Destination Report**

**2009 – 2010**

**West Dunbartonshire Council**

## Contents

<b>Section 1: Overview – Main Findings</b> .....	<b>3</b>
<i>Table 1: Destination Totals</i> .....	4
<i>Table 2: Local Authority Comparison to Scotland</i> .....	4
<b>Section 1.1 - Annual Trends</b> .....	<b>5</b>
<i>Table 3: Trends 2000 – 2010 of Positive Destinations</i> .....	5
<i>Table 4: Trends 2000 – 2010 of Other Destinations</i> .....	5
<i>Table 5: Destinations from 2000 to 2010</i> .....	6
<b>Section 1.2: Client Characteristics</b> .....	<b>6</b>
<i>Table 6: Destination split by Gender</i> .....	6
<i>Table 7: Gender split within each destination</i> .....	7
<i>Table 8: Destination by SIMD</i> .....	7
<i>Table 9: Destination by Stage Left School</i> .....	8
<b>Section 2: Positive Destinations</b> .....	<b>8</b>
<b>Section 2.1 Higher and Further Education</b> .....	<b>8</b>
<i>Table 10: HE Entrants by Institution Type</i> .....	8
<i>Table 11: HE Students by Institution</i> .....	9
<i>Table 12: HE Students by FE Colleges</i> .....	9
<i>Table 13: FE Students by FE Colleges</i> .....	9
<i>Table 14: Higher Education Course Information</i> .....	9
<i>Table 15: Further Education Course Information</i> .....	9
<i>Table 16: Course Information by Gender</i> .....	10
<i>Courses with less than 5 leavers have been suppressed</i> .....	10
<i>Table 17: Gender split within the course areas in both FE/HE</i> .....	10
<b>Section 2.2: Employment</b> .....	<b>11</b>
<i>Table 18: Those entering Employment by Occupational Area</i> .....	11
<i>Occupational areas with less than 5 leavers have been suppressed</i> .....	11
<i>Table 19: Gender split within the top employment areas</i> .....	11
<b>Section 3: Other Destinations</b> .....	<b>13</b>
<b>Section 3.1 Unemployed Seeking</b> .....	<b>13</b>
<i>Table 20: Client Characteristics</i> .....	13
<i>Table 21: Leavers by Intermediate Data zone</i> .....	14
<i>Table 22: Destinations of School Leavers: % Unemployed Seeking, 2009/10</i> .....	15
<b>Section 3.2 Unemployed NOT Seeking</b> .....	<b>16</b>
<i>Table 23: Individual Circumstances of those Unemployed NOT Seeking</i> .....	16
<b>Section 3.3 Unknown</b> .....	<b>16</b>
<i>Table 24: Destinations by School, Percentage</i> .....	17
<i>Background Notes:</i> .....	18

### Background

The School Leaver Destination Return (SLDR) is a statistical return undertaken by Skills Development Scotland (SDS) on behalf of the Scottish Government. The Return is based on a follow up of young people who left school between the 1st of August 2009 and the 31st of July 2010. This exercise was carried out during the month of September 2010.

The Scottish Government use the data produced from the Return to report against the National Indicator and target, “increase the proportion of school leavers (from Scottish publicly funded schools) in positive and sustained destinations (FE, HE, employment or training)”. Partners, particularly Local Authorities, use the data to inform initiatives developed as part of the More Choices More Chances Strategy, to evidence the success of initiatives, measure progress against targets, and to identify areas to target resources to improve the post school outcomes for young people.

### Methodology

The return is carried out during the month of September with staff across Skills Development Scotland following up over 55,000 school leavers. Destinations are confirmed throughout the follow up period and the destination that is reported is the destination that is known at the snapshot date. This year, we reported the information as known to us on 2nd October 2010. Destinations of young people are fluid in nature, therefore, it is possible that a leaver entered employment or training on leaving school but by the time the snapshot was taken this destination may have changed to another destination.

The information that is gathered is recorded within the SDS CMS system (Insight) which enables us to produce MIS reports and populate the data fields to be sent to the Government. This data is transferred at an individual level and undergoes a matching & validation process until a cohort is agreed. This allows the government’s analytical services unit to match the client’s individual outcome with other indicators such as social economic background, additional support needs and stage of leaving, etc. All information in this report, however, is based upon data held within the SDS Insight database which has been analysed to produce the graphs and tables contained within this report.

### Analysis

Only leavers from publicly funded secondary schools are within the scope of the SLDR. This report relates to **999** leavers from publicly funded secondary schools. This relates to approximately a **2.5%** increase in the number of leavers reported in the SLDR in 2008-09.

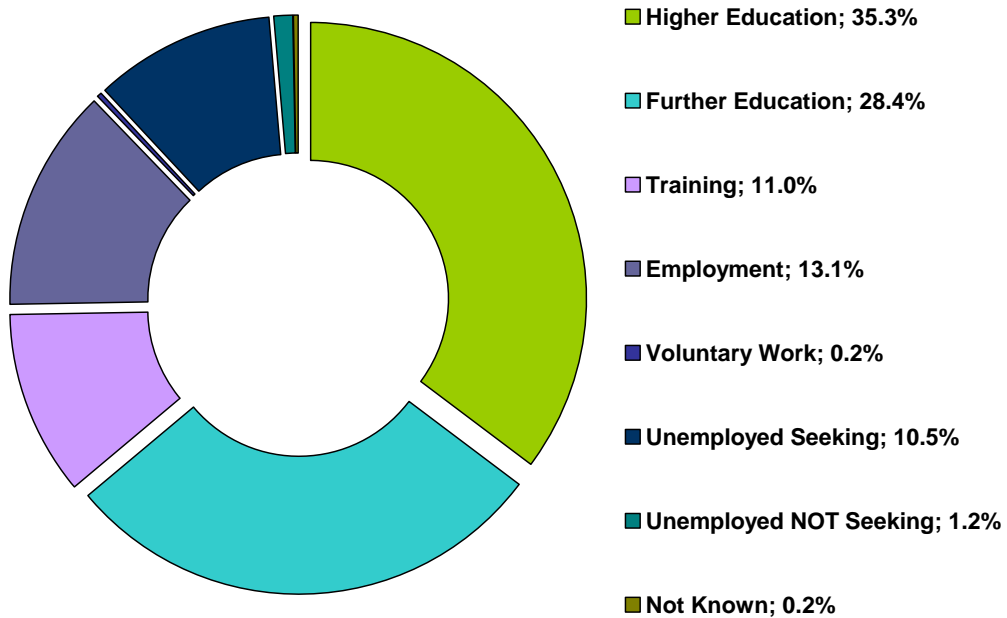
## Section 1: Overview – Main Findings

- Overall the percentage of leavers entering a positive destination<sup>i</sup> is **88.1%**, a rise of **5.1%** on last year. This rise was the second highest in Scotland, which has resulted in the authority moving from the 26<sup>th</sup> highest level of positive destinations to the 14<sup>th</sup>.
- The proportion of leavers entering further and higher education witnessed an increase this year to **63.8%**, a rise of **6.3%** compared to last year. The percentage of leavers entering higher education has increased by **5.5%** in comparison to last year to **35.3%** slightly lower than the Scottish average of **35.7%**. This has resulted in the authority moving from the 29<sup>th</sup> highest level of leavers entering higher education in Scotland to 16<sup>th</sup>.
- The percentage of leavers entering further education has also increased very slightly since last year to **28.4%** which is just over **1%** higher than the Scottish average.
- The percentage of leavers entering employment has fallen since last year from **17.6%** to **13.1%**, the lowest since 2001-02 and over 50% lower than 2006-07. The percentage entering training has increased by **3.1%** from last year to **11%**, the highest level in Scotland.

## Skills Development Scotland National School Leaver Destination Report 2009-10

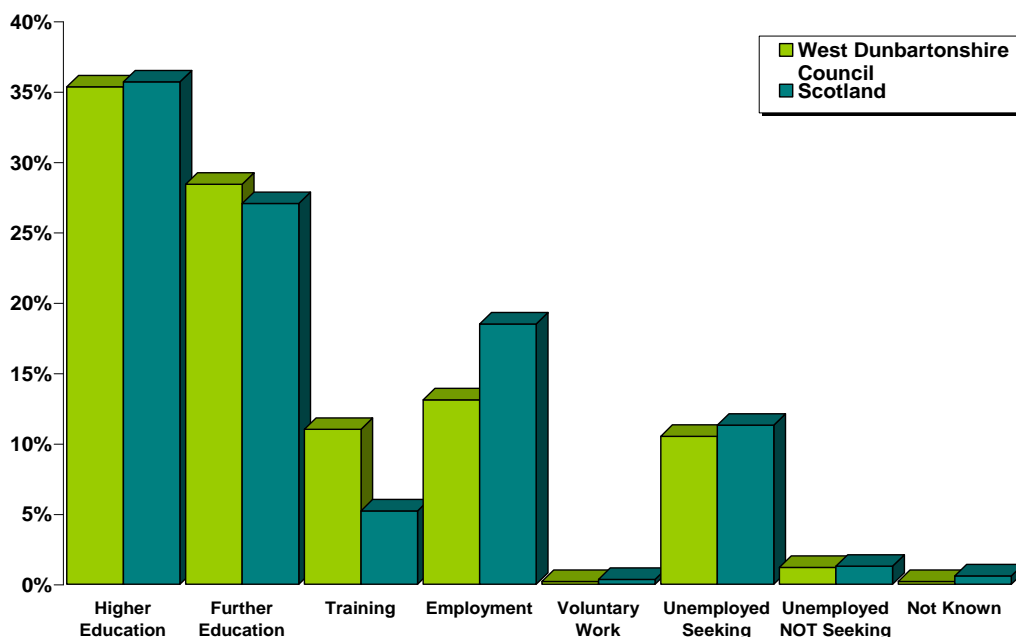
- The percentage of leavers who are unemployed seeking has decreased to **10.5%** from **13.2%**, slightly lower (**0.8%**) than the national average.
- School leavers whose destination is unknown to SDS has fallen to its lowest recorded level at **0.2%**.

**Table 1: Destination Totals**



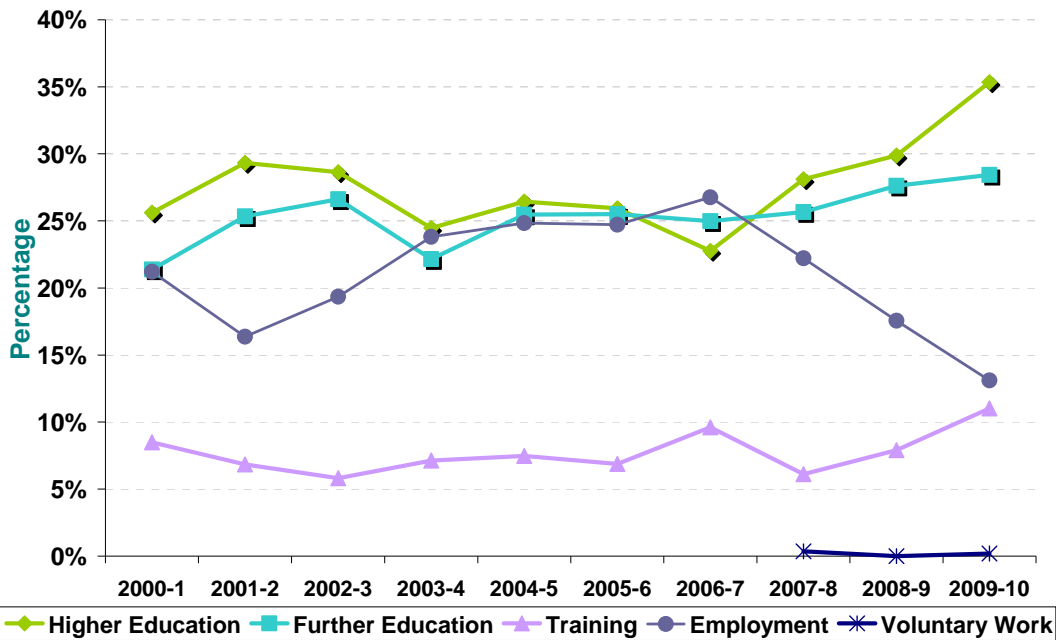
Area	Total Leavers	Higher Education	Further Education	Training	Employment	Voluntary Work	Unemployed Seeking	Unemployed NOT Seeking	Not Known
West Dunbartonshire	<b>999</b>	<b>35.3%</b> 353	<b>28.4%</b> 284	<b>11.0%</b> 110	<b>13.1%</b> 131	<b>0.2%</b> 2	<b>10.5%</b> 105	<b>1.2%</b> 12	<b>0.2%</b> 2
Scotland	<b>54,097</b>	<b>35.7%</b> 19,309	<b>27.1%</b> 14,637	<b>5.2%</b> 2,822	<b>18.5%</b> 10,005	<b>0.3%</b> 187	<b>11.3%</b> 6,117	<b>1.3%</b> 696	<b>0.6%</b> 324

**Table 2: Local Authority Comparison to Scotland**



Section 1.1 - Annual Trends

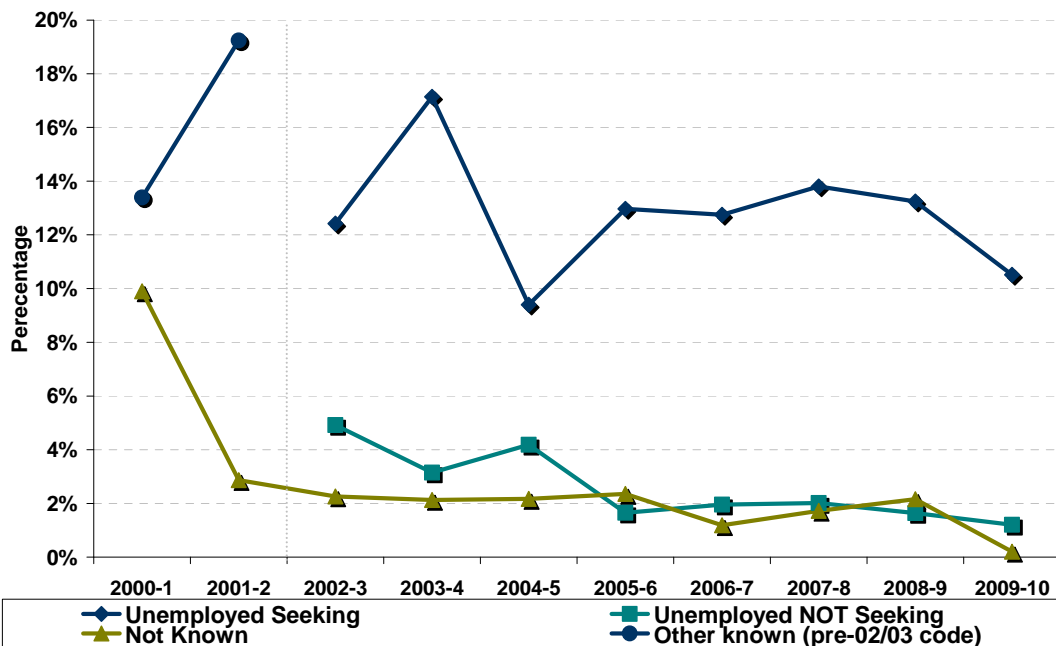
Table 3: Trends 2000 – 2010 of Positive Destinations



Note: Voluntary Work has been included as a separate destination category since the 2007-08 SLDR return but was reported within the unemployed not seeking category previously.

Since falling to its lowest level in 2006-07, the percentage of leavers entering Higher Education has risen year on year and is now almost 10% than 10 years ago. The proportion of leavers entering further education has also been rising year on year since 2006-07 and this is also at its highest level in a decade. In comparison, there has been a dramatic fall in the percentage of leavers entering employment since 2006-07 from 26.8% to 13.1%. However, the percentage entering training is at its highest level in a decade at 11%.

Table 4: Trends 2000 – 2010 of Other Destinations



The proportion of leavers reported as unemployed seeking dropped dramatically in 2004-5 but rose sharply in 2005-06. It now sits at its lowest level since 2004-05 at 10.5%. The percentage of

leavers unknown had been rising from a low of **1.2%** in 2006-07 but this year it has fallen to the lowest level ever at **0.2%**.

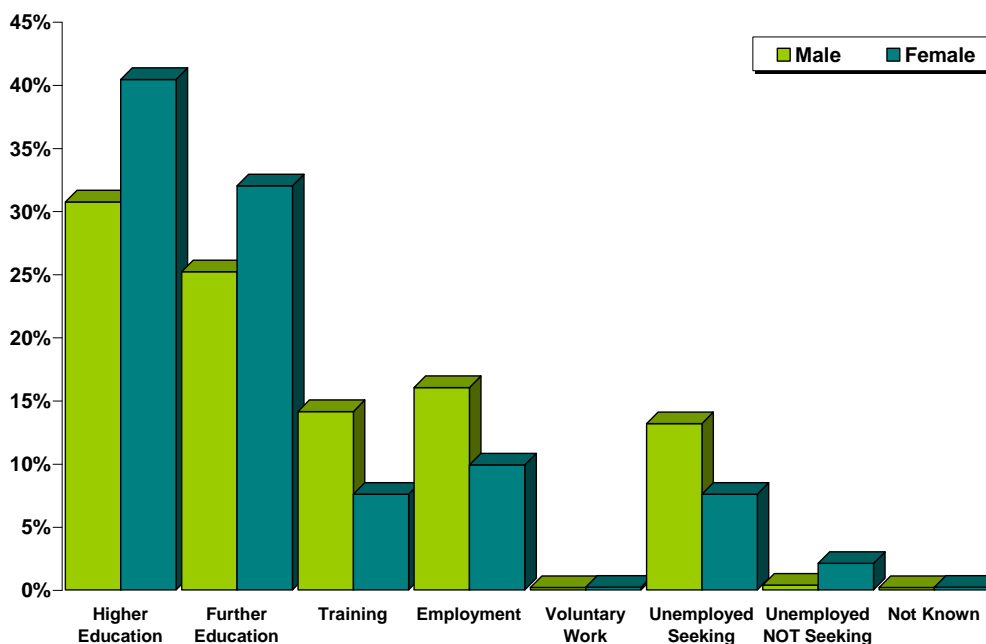
**Table 5: Destinations from 2000 to 2010**

Year	Total Leavers	Higher Education	Further Education	Training	Employment	Voluntary Work	Unemployed Seeking	Unemployed NOT Seeking	Not Known	Other Known
2000-1	1,202	25.6%	21.4%	8.5%	21.2%				9.9%	13.4%
2001-2	1,081	29.3%	25.3%	6.8%	16.4%				2.9%	19.2%
2002-3	1,240	28.6%	26.6%	5.8%	19.4%		12.4%	4.9%	2.3%	
2003-4	1,079	24.5%	22.2%	7.1%	23.8%		17.1%	3.2%	2.1%	
2004-5	1,244	26.4%	25.5%	7.5%	24.8%		9.4%	4.2%	2.2%	
2005-6	1,149	25.9%	25.5%	6.9%	24.7%		13.0%	1.7%	2.3%	
2006-7	1,177	22.8%	25.0%	9.6%	26.8%		12.7%	2.0%	1.2%	
2007-8	1,391	28.1%	25.7%	6.1%	22.2%	0.4%	13.8%	2.0%	1.7%	
2008-9	974	29.9%	27.6%	7.9%	17.6%	0.0%	13.2%	1.6%	2.2%	
2009-10	999	35.3%	28.4%	11.0%	13.1%	0.2%	10.5%	1.2%	0.2%	

**Note:** Prior to 2002-03 both the unemployed seeking and unemployed not seeking categories were reported in a separate category called Other Known. This is reflected in the table and graph above.

**Section 1.2: Client Characteristics**

**Table 6: Destination split by Gender**



Year	Total Leavers	Higher Education	Further Education	Training	Employment	Voluntary Work	Unemployed Seeking	Unemployed NOT Seeking	Not Known
Male	524	30.7%	25.2%	14.1%	16.0%	0.2%	13.2%	0.4%	0.2%
Female	475	40.4%	32.0%	7.6%	9.9%	0.2%	7.6%	2.1%	0.2%

Female leavers (**90.1%**) are more likely than male leavers (**86.3%**) to enter positive destinations on leaving school. The proportion of female leavers who continue their education in either higher or further education is **16.5%** higher than that for males, **72.4%** compared to **55.9%**. The percentage of males entering employment and training (**30.2%**) is **12.7%** higher than that for females (**17.5%**). Males are more likely to become unemployed and seeking than females with over **65%** of leavers reported as unemployed seeking being male.

Table 7: Gender split within each destination

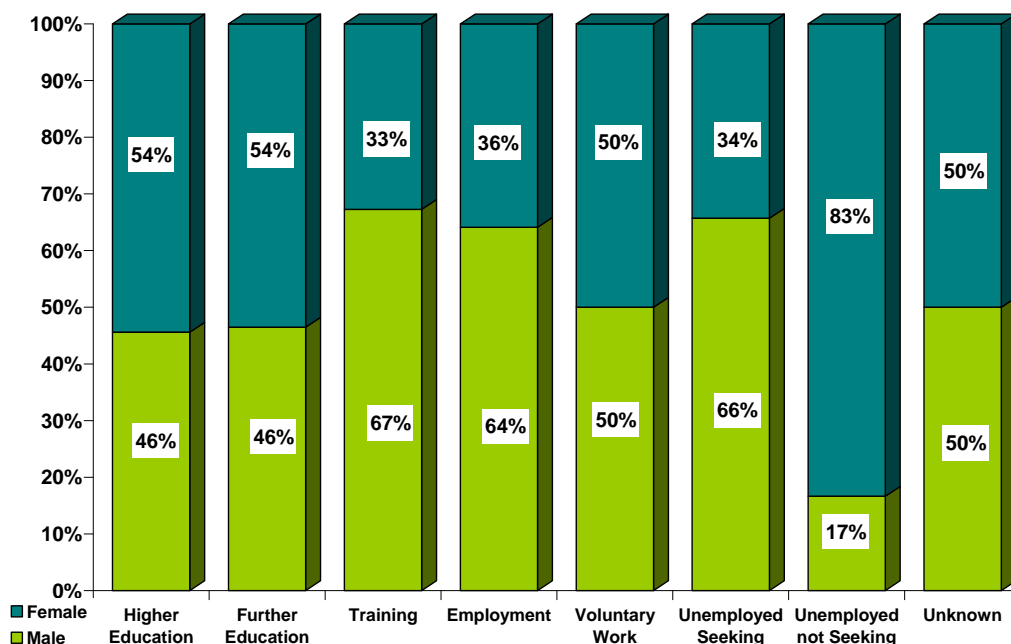


Table 8: Destination by SIMD

SIMD Decile <sup>ii</sup>	Destination by SIMD									
	Most Deprived					Least Deprived				
	1	2	3	4	5	6	7	8	9	10
Higher Education	21%	25%	37%	38%	45%	47%	50%	48%	50%	80%
Further Education	37%	36%	24%	26%	24%	19%	32%	12%	29%	10%
Training	15%	13%	11%	9%	15%	6%	5%	5%	9%	*
Employment	12%	11%	13%	15%	12%	17%	0%	24%	12%	10%
Voluntary Work	*	*	*	*	*	*	*	*	*	*
Unemployed Seeking	13%	12%	12%	11%	4%	10%	14%	12%	*	*
U/E Not Seeking	*	*	*	*	*	*	*	*	*	*
Unknown	*	*	*	*	*	*	*	*	*	*
<b>Positive Destinations</b>	<b>86%</b>	<b>85%</b>	<b>86%</b>	<b>88%</b>	<b>96%</b>	<b>88%</b>	<b>86%</b>	<b>88%</b>	<b>100%</b>	<b>100%</b>
<b>Total</b>	<b>182</b>	<b>212</b>	<b>151</b>	<b>152</b>	<b>82</b>	<b>101</b>	<b>22</b>	<b>42</b>	<b>34</b>	<b>20</b>
<b>% of Total Leavers</b>	<b>18%</b>	<b>21%</b>	<b>15%</b>	<b>15%</b>	<b>8%</b>	<b>10%</b>	<b>2%</b>	<b>4%</b>	<b>3%</b>	<b>2%</b>

Percentages based on 5 or less have been suppressed due to disclosure reasons.

- Across the SIMD areas there is not a marked difference in the proportion of leavers entering positive destinations apart from SIMD 9 and 10, where **100%** of leavers have entered positive destinations.
- Leavers who live in the least deprived areas are more likely to enter Higher Education in comparison to leavers who live in the most deprived areas. The proportion leavers entering higher education from the least deprived area (**80%**) is approx four times the proportion for leavers from the most deprived areas (**21%**). The proportion of leavers entering higher education gradually rises as you move from the most deprived areas to the least deprived
- The majority of leavers from all SIMD Decile areas enter higher or further education.
- Across the SIMD areas there is not a marked difference in the proportion of leavers being unemployed seeking apart from SIMD 5, 9 and 10.

**Table 9: Destination by Stage Left School.**

Stage of Leaving <sup>iii</sup> Destination	Statutory Summer Leaver	Statutory Winter Leaver	Post Statutory Leaver
Higher Education	0%	2%	45%
Further Education	43%	23%	27%
Training	28%	30%	6%
Employment	9%	18%	13%
Voluntary Work	0%	0%	0%
Unemployed Seeking	18%	22%	8%
Unemployed Not Seeking	2%	5%	1%
Unknown	0%	0%	0%
Positive Destinations	80%	73%	91%
<b>Total Leavers</b>	132	83	784
<b>% of Total Leavers</b>	13%	8%	78%

- It can be noted that the highest proportion of school pupils choose to remain at school past their statutory leave date and this has an impact on their positive progression from school. Leavers who stay on past their statutory leave date are more likely to progress to positive outcomes on leaving school with the majority entering higher education.
- Statutory winter leavers are less likely to enter positive destinations and the highest proportion are reported as being in training. Statutory winter leavers are around two and a half times as likely to be reported as unemployed seeking than a post statutory leaver.
- The highest proportions of statutory summer leavers enter further education with training being the 2<sup>nd</sup> highest proportion.

## Section 2: Positive Destinations

### Section 2.1 Higher and Further Education

**Higher Education (HE):** This category includes leavers following HND (Higher National Diploma) or HNC (Higher National Certificate) courses, degree courses, courses for the education and training of teachers and higher level courses for professional qualifications. 4 young people with a deferred, unconditional place in higher education for next year have also been included in this year's figures.

**Further Education (FE):** This category includes leavers undertaking non advanced further education which is not higher education.

From those reported in the SLDR, 353 leavers entered Higher Education and 284 entered Further Education. Detailed analysis can be provided on 99.1% (631) of this cohort for whom we hold information on institution and course chosen – Higher Education 99.4% (351) & Further Education 98.6% (280).

**Table 10: HE Entrants by Institution Type**

Institution Type	Total	%
University / HE College	210	60%
FE College	138	39%
Other <sup>1</sup>	3	1%

<sup>1</sup> Other Category includes institutions out with Scotland and other private institutions

**Table 11: HE Students by Institution**

Institution <sup>iv</sup>	Total	%	Institution	Total	%
Glasgow University	61	17%	Glasgow School of Art	6	2%
Strathclyde University	53	15%	FE Colleges	138	39%
West of Scotland University	44	13%	Other Institutions	18	5%
Glasgow Caledonian University	31	9%			

Institutions with less than 5 leavers are included in "Other Institutions" in the table above.

**Table 12: HE Students by FE Colleges**

Institution	Total	%	Institution	Total	%
Clydebank College	47	13%	Stow College	10	3%
Anniesland College	19	5%	Glasgow College of Nautical Studies	7	2%
Glasgow Metropolitan College	18	5%	North Glasgow College	6	2%
Central College of Commerce	16	5%	Other Institutions	15	5%

Institutions with less than 5 leavers are included in "Other Institutions" in the table above.

**Table 13: FE Students by FE Colleges**

Institution	Total	%	Institution	Total	%
Clydebank College	172	61%	Stow College	6	2%
Anniesland College	52	19%	Reid Kerr College	6	2%
Glasgow Metropolitan College	18	6%	Other Institutions	19	7%
Central College of Commerce	7	3%			

Institutions with less than 5 leavers are included in "Other Institutions" in the table above.

It can be noted from tables 11, 12 & 13 that the majority of leavers who continue their studies post school, chose to attend local institutions.

**Table 14: Higher Education Course Information**

Course Area	Total	%	Course Area	Total	%
Science & Mathematics	52	15%	Performing Arts	14	4%
Arts & Social Sciences	45	13%	Hospitality, Catering & Tourism	13	4%
Administration & Management	38	11%	Communications & Media	9	3%
Art and Design	32	9%	Languages	9	3%
Engineering	27	8%	Construction	8	2%
Computing & ICT	24	7%	Teaching	8	2%
Finance	20	6%	Law	7	2%
Sport, Leisure & Sport Science	18	5%	Sales & Marketing	5	1%
Health & Medicine	17	5%	Other course areas	5	1%

**Table 15: Further Education Course Information**

Course Area	Total	%	Course Area	Total	%
Construction	29	10%	Engineering	15	5%
Hairdressing & Beauty	29	10%	Performing Arts	13	5%
Hospitality, Catering & Tourism	28	10%	Administration & Management	12	4%
General Education (Highers, etc)	27	10%	Personal Dev & Prep Courses	9	3%
Social, Caring & Advisory Services	27	10%	Arts & Social Sciences	6	2%
Garage Services	22	8%	Communications & Media	5	2%
Sport, Leisure & Sport Science	22	8%	Health & Medicine	5	2%
Art and Design	18	6%	Other course areas	6	2%

## Skills Development Scotland National School Leaver Destination Report 2009-10

This is the 3<sup>rd</sup> year that SDS has gathered fuller data, across Scotland, about the course areas entered by school leavers. It shows that Science and Mathematics based subjects are the most popular for those entering higher education followed by arts and social sciences.

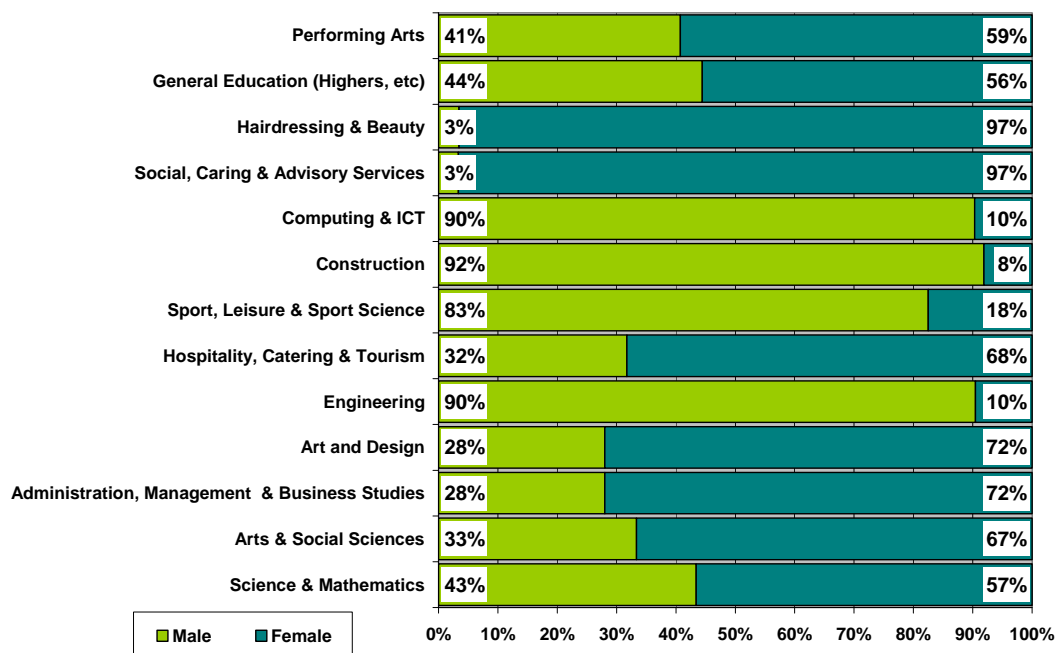
Within further education, leavers studying vocational subjects such as construction and hairdressing and beauty are the most popular choices.

**Table 16: Course Information by Gender**

Course Area	Male		Female	
	Total	%	Total	%
Science & Mathematics	23	8%	30	9%
Arts & Social Sciences	17	6%	34	10%
Administration & Management	14	5%	36	11%
Art and Design	14	5%	36	11%
Engineering	38	13%	*	*%
Hospitality, Catering & Tourism	13	4%	28	8%
Sport, Leisure & Sport Science	33	11%	7	2%
Construction	34	12%	*	*%
Computing & ICT	28	10%	*	*%
Social, Caring & Advisory Services	*	*%	29	9%
Hairdressing & Beauty	*	*%	28	8%
General Education (Highers, etc)	12	4%	15	4%
Performing Arts	11	4%	16	5%
Finance	12	4%	10	3%
Garage Services	17	6%	*	*%
Health & Medicine	*	*%	19	6%
Communications & Media	7	2%	7	2%
Languages	*	*%	7	2%
Teaching	*	*%	7	2%

Courses with less than 5 leavers have been suppressed

**Table 17: Gender split within the course areas in both FE/HE**



There has been a slight change in comparison to last year with the top three course areas for male leavers being engineering, sport & leisure and construction. Construction replaces Computing and ICT in the top three. In comparison female leavers have opted to enter subjects in administration, arts & social sciences and art and design. The most popular area for all leavers is science & mathematics with the majority of entrants being female (57%). Subjects in engineering and construction remain male dominated while social/caring related courses are female dominated.

**Section 2.2: Employment**

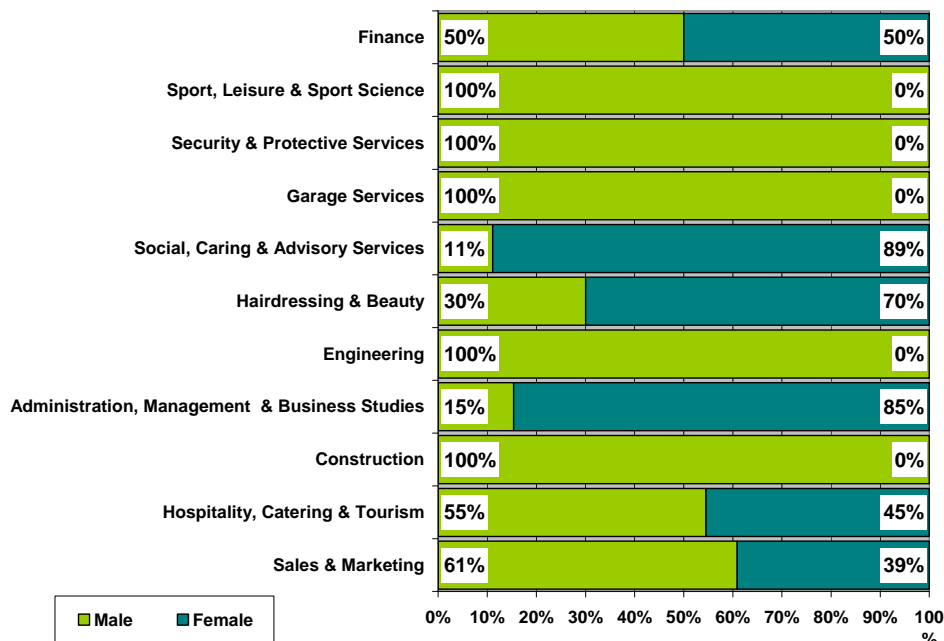
**Employment:** This category includes those who are employed and who are in receipt of payment from their employers. It includes young people undertaking training in employment through Skillseekers and Modern Apprenticeships. 131 young people entered Employment and analysis can be provided on all of those entering employment for whom we hold information about the occupational area entered.

**Table 18: Those entering Employment by Occupational Area**

Occupational Area	Male		Female	
	Total	%	Total	%
Sales & Marketing	14	17%	9	19%
Hospitality, Catering & Tourism	12	14%	10	21%
Construction	18	21%	*	0%
Administration & Management	*	*	11	23%
Engineering	10	12%	*	0%
Hairdressing & Beauty	*	*	7	15%
Social, Caring & Advisory Services	*	*	8	17%
Garage Services	7	8%	*	0%
Security & Protective Services	5	6%	*	0%
Sport, Leisure & Sport Science	5	6%	*	0%

Occupational areas with less than 5 leavers have been suppressed

**Table 19: Gender split within the top employment areas**



The most popular area of employment entered by school leavers continues to be sales & marketing which includes retail operations. The most popular area for males is construction with **21%** of male leavers gaining employment in this occupational area which is a drop of **2%** on last year's levels. The 3 most popular occupational areas with female leavers are Administration, hospitality, catering & tourism and retail with 40% entering these areas.

All the leavers who enter the occupational areas of construction, engineering and garage services are male and social caring roles remain female dominated but almost a third of the leavers who find work in hairdressing are male.

## Section 3: Other Destinations

School leavers who do not achieve a positive destination on leaving school are known as the MCMC group and are key customers for Skills Development Scotland and our partner organisations. The SLDR is a snapshot in time and should only be used as an indicator.

**Unemployed and seeking employment or training:** This category includes those who are in contact with SDS and are known by them to be seeking employment or training. This is based on regular contact between SDS and the client. This does not refer to the definition of 'unemployed' used by the Benefits Agency to calculate published unemployment rates. In 2009-10 it also included those individuals undertaking personal skills development<sup>v</sup> 21 or 22% of the unemployed seeking cohort

**Unemployed and not seeking employment or training:** This category includes all those individuals who are not seeking employment or training for a range of reasons. These individual circumstances may involve sickness, prison, pregnancy, caring for children or other dependents or taking time out.

### Section 3.1 Unemployed Seeking

The table provides a comparison of the percentage of unemployed seeking clients with specific characteristics as opposed to the rate of the full SLDR cohort

**Table 20: Client Characteristics**

Characteristics	% of Full SLDR	% of Unemployed Seeking
<b>Gender</b>		
Male	52%	66%
Female	48%	34%
<b>Stage Left School</b>		
Statutory Summer Leaver	13%	23%
Statutory Winter Leaver	8%	17%
Post Statutory Leaver	78%	60%
<b>Qualifications on Leaving School<sup>vi</sup></b>		
Access 1 / No formal Qualifications	1%	2%
Access 2&3/Foundation Stand. Grade	3%	11%
General Standard Grade/ Intermediate 1	18%	29%
Credit Standard Grade/ Intermediate 2	28%	31%
Highers/Advanced Higher	50%	25%
Unknown	1%	2%
<b>Health And Additional Support Needs<sup>vii</sup></b>		
Looked After at Home/ Looked after away from home <sup>viii</sup>	3%	9%
Additional Support Plan Recorded <sup>ix</sup>	5%	7%
Health Factor/Additional Support Need Identified <sup>x</sup>	9%	18%

**Table 20: Client Characteristics (cont)**

Characteristics		% of Full SLDR	% of Unemployed Seeking
<b>SIMD Decile Ranking /Deprivation (SIMD 2009)</b>			
<b>Most deprived</b>	1	18%	22%
	2	21%	25%
	3	15%	17%
	4	15%	16%
	5	8%	3%
	6	10%	10%
	7	2%	3%
	8	4%	5%
	9	3%	0%
	10	2%	0%
<b>Least Deprived</b>	Unknown	0%	0%

- Although male leavers account for only 52% of the leaving cohort they account for almost 66% of leavers reported as unemployed seeking.
- Statutory winter leavers represent only 8% of the whole SLDR cohort but are disproportionately represented within the leavers reported as unemployed seeking at 17%, as are statutory summer leavers who represent 13% of the cohort and 23% of unemployed seeking
- The largest proportion of unemployed seeking leavers have credit level standard grades.
- Leavers who had a period of being looked after at home or away from home are also disproportionately represented within the leavers reported as unemployed seeking

**Table 21: Leavers by Intermediate Data zone**

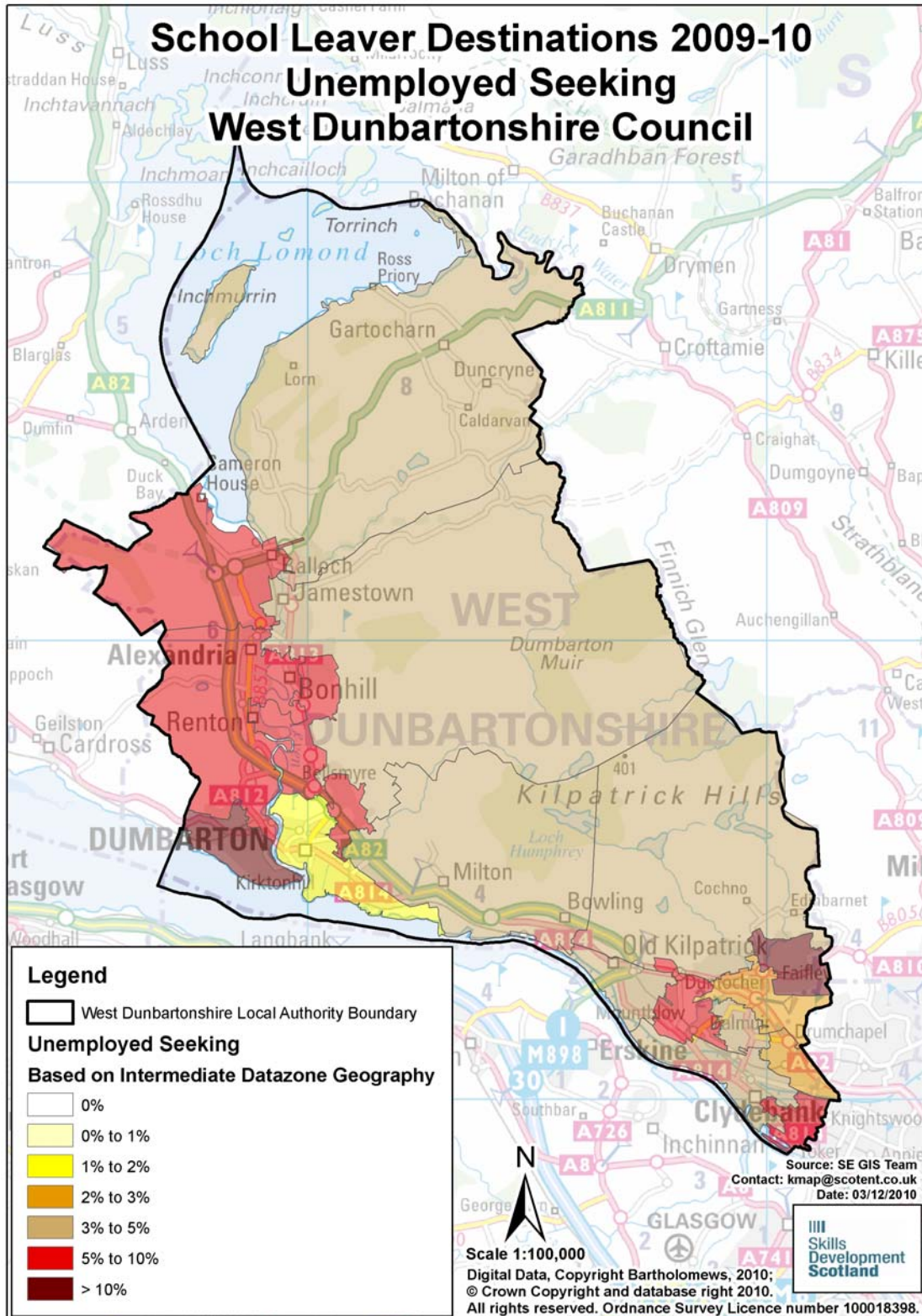
There were **105** leavers from West Dunbartonshire schools who were reported as unemployed seeking in the SLDR. By using postcodes, we were able to identify areas within the authority where unemployed school leavers were living. However, at the snapshot, **5** of the leavers were living outside the local authority area but a further **11** unemployed seeking school leavers from other local authority schools were residing within the local authority boundaries. The analysis below is based on **111** leavers residing in the authority and who SDS held postcode information for. The table below shows the intermediate data zones with the highest percentage of unemployed leavers.

Intermediate Data zone <sup>xi</sup>	Total	%	Intermediate Data zone	Total	%
Faifley	13	12%	Dumbarton Central	7	6%
Dumbarton East	10	9%	Renton/Alexandria South	7	6%
Barloan/Overtoun	9	8%	Bowling/Milton/Old Kilpatrick	7	6%
Dumbarton North	9	8%	Dumbarton West	7	6%
Whitecrook	7	6%	Kilbowie West	6	5%
Linnvale/Drumry	7	6%	Alexandra North/Tullichewan	6	5%

Intermediate Data zone areas with less than 5 leavers have been suppressed

**Table 22: Destinations of School Leavers: % Unemployed Seeking, 2009/10**

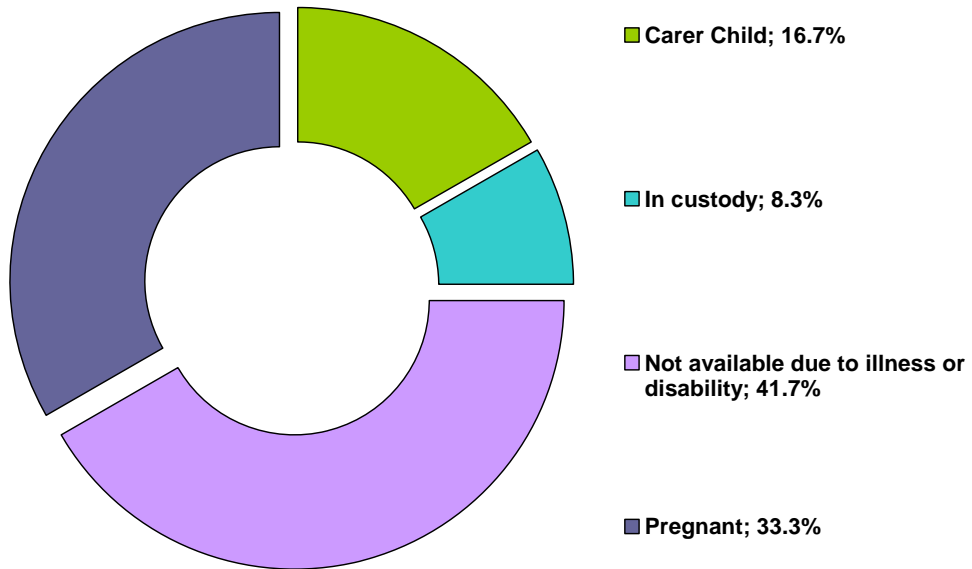
The map shows the intermediate data zones where the 111 leavers who were residing within the local authority boundary reside. Percentages have been calculated as a proportion of the number of leavers reported



**Section 3.2 Unemployed NOT Seeking**

There were **12** school leavers within this category.

**Table 23: Individual Circumstances of those Unemployed NOT Seeking**



**Section 3.3 Unknown**

There were **2** school leavers whose current destination was unknown at the time of SLDR.

*Table 24: Destinations by School, Percentage*

School	Higher Education	Further Education	Training	Employment	Voluntary Work	Unemployed Seeking	Unemployed Not Seeking	Not Known	Total Leavers	% Pos	% Other
Clydebank High School	37.9%	36.2%	8.5%	8.5%	0.4%	6.7%	1.8%	0.0%	<b>224</b>	<b>91.5%</b>	8.5%
Dumbarton Academy	37.8%	25.2%	13.4%	14.3%	0.8%	7.6%	0.8%	0.0%	<b>119</b>	<b>91.6%</b>	8.4%
Our Lady & St Patrick's High	36.5%	22.7%	8.8%	15.5%	0.0%	14.4%	1.1%	1.1%	<b>181</b>	<b>83.4%</b>	16.6%
St Peter the Apostle High School	34.3%	23.7%	15.7%	13.9%	0.0%	10.9%	1.5%	0.0%	<b>274</b>	<b>87.6%</b>	12.4%
Vale Of Leven Academy	31.3%	33.3%	8.0%	14.4%	0.0%	12.4%	0.5%	0.0%	<b>201</b>	<b>87.1%</b>	12.9%
<b>West Dunbartonshire Council</b>	<b>35.3%</b>	<b>28.4%</b>	<b>11.0%</b>	<b>13.1%</b>	<b>0.2%</b>	<b>10.5%</b>	<b>1.2%</b>	<b>0.2%</b>	<b>999</b>	<b>88.1%</b>	11.9%

## Background Notes:

---

- <sup>i</sup> **Positive Destinations:** includes higher education, further education, training, employment and voluntary work. See text above for explanation of each destination heading.
- <sup>ii</sup> **The Scottish Index of Multiple Deprivation (SIMD):** SIMD identifies small area concentrations of multiple deprivation across all of Scotland in a consistent way. SDS uses a file created by Scottish Neighbourhood Statistics to identify SIMD based on an individual leaver's postcode. The leaver's postcode is based on the last known address of the leaver as recorded on our client management system. Where there were gaps in the data held on our CMS, the last known address supplied in the annual import of pupil details has been used. As the last known postcode is used it may be that a leaver from one local authority was living in another local authority at the time of the return. Therefore, the SIMD relates to where a leaver was living and not the concentration of SIMD within a local authority.
- <sup>iii</sup> **Stage of Leaving:** A **statutory summer leaver** is a school leaver who chooses to leave school at the earliest opportunity (31<sup>st</sup> May) when they become eligible to leave school i.e. their 16<sup>th</sup> birthday falls on or between 1<sup>st</sup> March and 30<sup>th</sup> September in their year of leaving. A **statutory winter leaver** is a school leaver who chooses to leave school at the earliest opportunity when they become eligible to leave school i.e. their 16<sup>th</sup> birthday falls between 1<sup>st</sup> October and the last day in February. A **post statutory leaver** is a school leaver who chose to remain at school past their statutory leave date e.g. a winter leaver who would have been eligible to leave at the winter leave date but choose to remain at school until the summer leave date. Included in this group are leavers who have past their statutory leave date and have left school at any stage throughout the year.
- <sup>iv</sup> **Institutions:** through our follow up of leavers, we confirm Further and Higher Education destinations and as part of the process we request further information about the institution a leaver is attending. This is not a requirement of the Scottish Government and the information displayed is based on the recorded detail on Insight, the SDS
- <sup>v</sup> **Personal Skills Development:** - Some leavers are not yet ready, or in a position to make an immediate transition to a formal positive destination. In such cases leavers may participate in learning opportunities / personal and social development activities with the aim of improving their confidence and employability. These programmes can be viewed as a stepping stone towards a more formal positive destination. They are often delivered by a community learning and development or third sector organisation and can include the activity agreement pilots. It was agreed, with the Scottish Government, that individuals undertaking these activities would be reported within the unemployed seeking SLDR category.
- <sup>vi</sup> **Qualifications on leaving school:** This information is based on pre-appeal information from the Scottish Qualifications Agency where SDS received information about a leaver's qualifications and a robust match of records was made. Where no match was made the qualification level has been gathered through our interaction with individuals.
- <sup>vii</sup> **Qualifications on leaving school:** This information is based on pre-appeal information from the Scottish Qualifications Agency where SDS received information about a leaver's qualifications and a robust match of records was made. Where no match was made the qualification level has been gathered through our interaction with individuals.
- <sup>viii</sup> **Looked After at Home/ Looked after away from home:** This refers to recent school leavers that SDS has recorded information that they had an episode of being looked after at home or looked after away from home. This information is gathered in a variety of ways including local SDS contact with Social Work departments, data received through the school import process or via direct contact with individuals. It is recognised that this information may not be complete when compared with similar data from social work services departments. However SDS is working with the Scottish Government and local authorities to look at improving the sharing of information in respect of these young people therefore the figures used are indicative.
- <sup>ix</sup> **Additional Support Plan Recorded:** SDS receives data from all local authority schools and school centres with pupils in stages S1-S6 or special schools to import into our client management system. We receive information about those who have co-ordinated support plans (CSP) and individualised educational programmes. We also gather information directly from individuals and via our ongoing work with schools. We acknowledge that the data may vary from that held by local authorities therefore the figures used are indicative.
- <sup>x</sup> **Health Factor/Additional Support Need Identified:** SDS receives data from all local authority schools and school centres with pupils in stages S1-S6 or special schools to import into our client management system. We receive information about those who have identified additional support needs. We also gather information directly from individuals and via our ongoing work with schools. We acknowledge that the data may vary from that held by local authorities therefore the figures used are indicative.

---

<sup>xi</sup>**Intermediate Data zone Geography:** The data zone is the key small area statistical geography in Scotland. The intermediate geography is built up from data zones and can be used to disseminate statistics that are not suitable for release at the data zone level. Due to the small number of individuals it has been decided to use the intermediate level geography. There are 1235 intermediate zones in Scotland, containing on average 4000 household residents and these have been designed to respect local authority boundaries as at 2001 Census.