

School Leaver Destination Report

2009 – 2010

South Ayrshire Council

Contents

Section 1: Overview – Main Findings	3
<i>Table 1: Destination Totals</i>	4
<i>Table 2: Local Authority Comparison to Scotland</i>	4
Section 1.1 - Annual Trends	5
<i>Table 3: Trends 2000 – 2010 of Positive Destinations</i>	5
<i>Table 4: Trends 2000 – 2010 of Other Destinations</i>	5
<i>Table 5: Destinations from 2000 to 2010</i>	6
Section 1.2: Client Characteristics	6
<i>Table 6: Destination split by Gender</i>	6
<i>Table 7: Gender split within each destination</i>	7
<i>Table 9: Destination by Stage Left School</i>	8
Section 2: Positive Destinations	8
Section 2.1 Higher and Further Education	8
<i>Table 10: HE Entrants by Institution Type</i>	8
<i>Table 11: HE Students by Institution</i>	9
<i>Table 12: HE Students by FE Colleges</i>	9
<i>Table 13: FE Students by FE Colleges</i>	9
<i>Table 14: Higher Education Course Information</i>	9
<i>Table 15: Further Education Course Information</i>	10
<i>Table 16: Course Information by Gender</i>	10
Courses with less than 5 leavers have been suppressed	10
<i>Table 17: Gender split within the course areas in both FE/HE</i>	11
<i>Table 18: Those entering Employment by Occupational Area</i>	12
Occupational areas with less than 5 leavers have been suppressed	12
<i>Table 19: Gender split within the top employment areas</i>	12
Section 3: Other Destinations	14
Section 3.1 Unemployed Seeking	14
<i>Table 20: Client Characteristics</i>	14
<i>Table 21: Leavers by Intermediate Data zone</i>	15
<i>Table 22: Destinations of School Leavers: % Unemployed Seeking, 2009/10</i>	15
Section 3.2 Unemployed NOT Seeking	17
<i>Table 23: Individual Circumstances of those Unemployed NOT Seeking</i>	17
Section 3.3 Unknown	17
<i>Table 24: Destinations by School, Percentage</i>	18
Background Notes:	19

Background

The School Leaver Destination Return (SLDR) is a statistical return undertaken by Skills Development Scotland (SDS) on behalf of the Scottish Government. The Return is based on a follow up of young people who left school between the 1st of August 2009 and the 31st of July 2010. This exercise was carried out during the month of September 2010.

The Scottish Government use the data produced from the Return to report against the National Indicator and target, “increase the proportion of school leavers (from Scottish publicly funded schools) in positive and sustained destinations (FE, HE, employment or training)”. Partners, particularly Local Authorities, use the data to inform initiatives developed as part of the More Choices More Chances Strategy, to evidence the success of initiatives, measure progress against targets, and to identify areas to target resources to improve the post school outcomes for young people.

Methodology

The return is carried out during the month of September with staff across Skills Development Scotland following up over 55,000 school leavers. Destinations are confirmed throughout the follow up period and the destination that is reported is the destination that is known at the snapshot date. This year, we reported the information as known to us on 2nd October 2010. Destinations of young people are fluid in nature, therefore, it is possible that a leaver entered employment or training on leaving school but by the time the snapshot was taken this destination may have changed to another destination.

The information that is gathered is recorded within the SDS CMS system (Insight) which enables us to produce MIS reports and populate the data fields to be sent to the Government. This data is transferred at an individual level and undergoes a matching & validation process until a cohort is agreed. This allows the government’s analytical services unit to match the client’s individual outcome with other indicators such as social economic background, additional support needs and stage of leaving, etc. All information in this report, however, is based upon data held within the SDS Insight database which has been analysed to produce the graphs and tables contained within this report.

Analysis

Only leavers from publicly funded secondary schools are within the scope of the SLDR. This report relates to **1,187** leavers from publicly funded secondary schools. This relates to a **3.3%** decrease in the number of leavers reported in the SLDR in 2008-09.

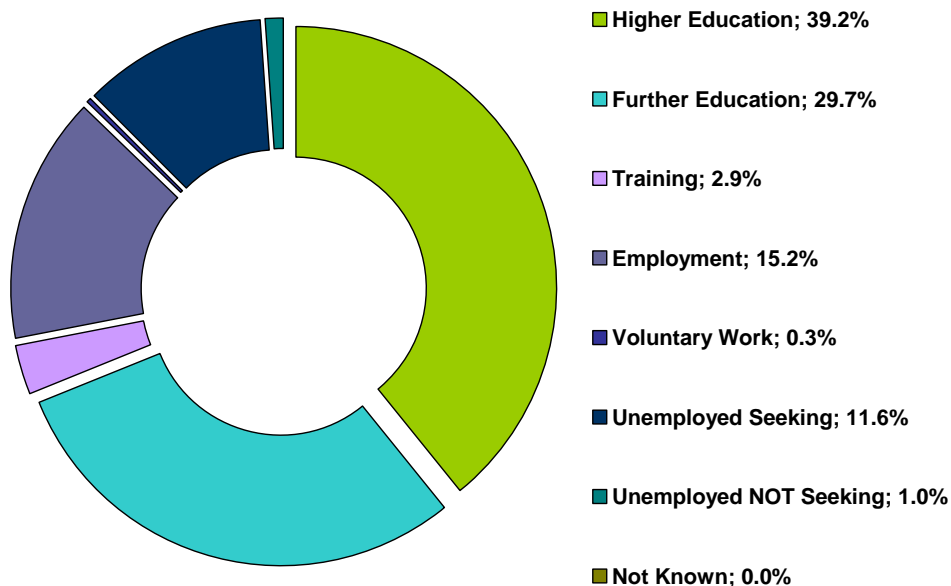
Section 1: Overview – Main Findings

- Overall the percentage of leavers entering a positive destinationⁱ is **87.4%**, a decrease of **0.6%** on last year. This decrease has resulted in the authority moving from the 11th highest level of positive destinations in Scotland reported in the 2008-09 SLDR to the 18th this year.
- The proportion of leavers entering further and higher education witnessed an increase this year to **68.9%**, an increase of **3.2%** compared to last year. The percentage of leavers entering higher education has increased by **2.3%** in comparison to last year to **39.2%** higher than the Scottish average of **35.7%**. This has resulted in the authority moving from the 11th highest level of leavers entering higher education in Scotland to 6th.
- The percentage of leavers entering further education has also increased since last year to **29.7%** which is **2.6%** higher than the Scottish average.
- The percentage of leavers entering employment has decreased since last year from **16.2%** to **15.2%**. The percentage entering training has decreased since last year from **6.0%** to **2.9%**, considerably lower than the Scottish average of **5.2%**.

Skills Development Scotland South Ayrshire School Leaver Destination Report 2009-10

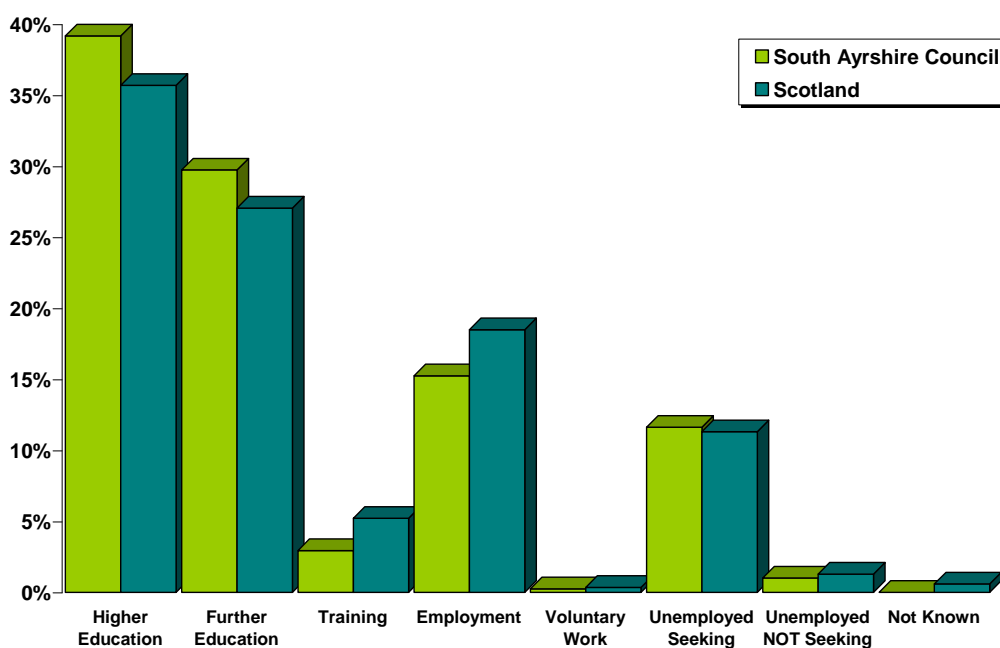
- The percentage of leavers who are unemployed seeking has increased to **11.6%** from **10.5%**, slightly higher (**0.3%**) than the national average.
- There are no school leavers whose destination is unknown to SDS in South Ayrshire. The Scottish average is **0.6%**.

Table 1: Destination Totals



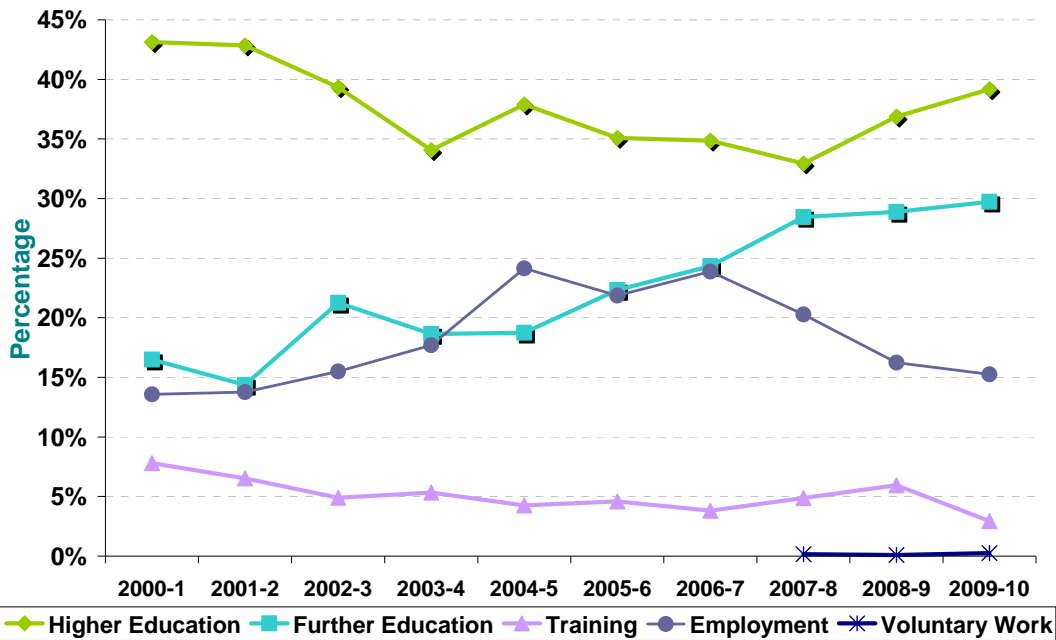
Area	Total Leavers	Higher Education	Further Education	Training	Employment	Voluntary Work	Unemployed Seeking	Unemployed NOT Seeking	Not Known
South Ayrshire	1,187	39.2% 465	29.7% 353	2.9% 35	15.2% 181	0.3% 3	11.6% 138	1.0% 12	0.0% 0
Scotland	54,097	35.7% 19,309	27.1% 14,637	5.2% 2,822	18.5% 10,005	0.3% 187	11.3% 6,117	1.3% 696	0.6% 324

Table 2: Local Authority Comparison to Scotland



Section 1.1 - Annual Trends

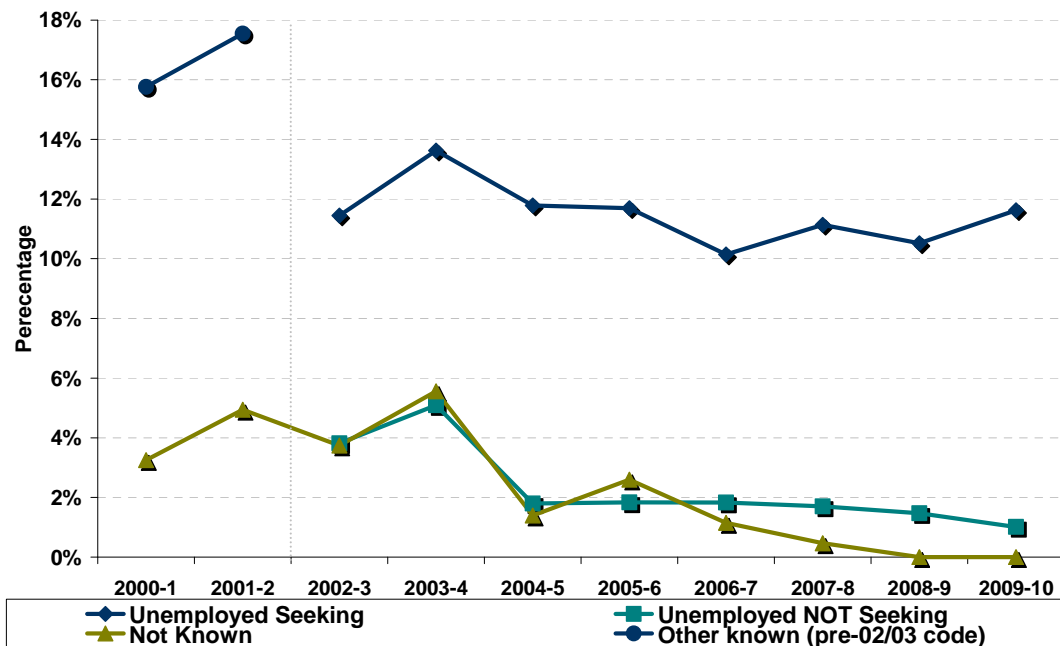
Table 3: Trends 2000 – 2010 of Positive Destinations



Note: Voluntary Work has been included as a separate destination category since the 2007- 08 SLDR return but was reported within the unemployed not seeking category previously.

Since falling to its lowest level in 2007-08, the percentage of leavers entering Higher Education has risen year on year and is now **3.9%** lower than the high point in 2000-01. The proportion of leavers entering further education continues to rise to a new high point of **29.7%**. The level of those entering employment has again decreased to **15.2%**, the lowest level since 2002-03. The percentage entering training has also fallen this year to **2.9%**, the lowest point in the 10 year period from 2000-01.

Table 4: Trends 2000 – 2010 of Other Destinations



The proportion of leavers reported as unemployed seeking has increased this year to **11.6%**. The level of unemployed not seeking, however, has decreased this year to **1.0%**, the lowest level

reported in the ten year period from 2000-01. The percentage of leavers unknown has remained at 0% since last year.

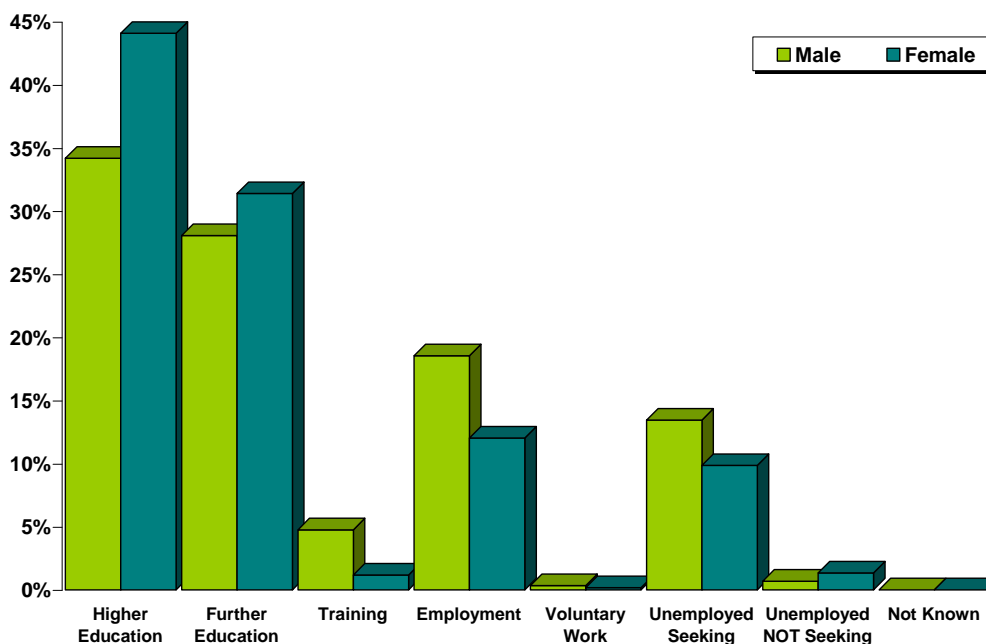
Table 5: Destinations from 2000 to 2010

Year	Total Leavers	Higher Education	Further Education	Training	Employment	Voluntary Work	Unemployed Seeking	Unemployed NOT Seeking	Not Known	Other Known
2000-1	1,231	43.1%	16.5%	7.8%	13.6%				3.2%	15.8%
2001-2	1,134	42.9%	14.4%	6.5%	13.8%				4.9%	17.5%
2002-3	1,284	39.3%	21.3%	4.9%	15.5%		11.4%	3.8%	3.7%	
2003-4	1,277	34.1%	18.6%	5.3%	17.7%		13.6%	5.1%	5.6%	
2004-5	1,222	37.9%	18.7%	4.3%	24.1%		11.8%	1.8%	1.4%	
2005-6	1,308	35.1%	22.3%	4.6%	21.9%		11.7%	1.8%	2.6%	
2006-7	1,311	34.9%	24.3%	3.8%	23.9%		10.1%	1.8%	1.1%	
2007-8	1,293	32.9%	28.5%	4.9%	20.3%	0.2%	11.1%	1.7%	0.5%	
2008-9	1,226	36.9%	28.9%	6.0%	16.2%	0.1%	10.5%	1.5%	0.0%	
2009-10	1,187	39.2%	29.7%	2.9%	15.2%	0.3%	11.6%	1.0%	0.0%	

Note: Prior to 2002-03 both the unemployed seeking and unemployed not seeking categories were reported in a separate category called Other Known. This is reflected in the table and graph above.

Section 1.2: Client Characteristics

Table 6: Destination split by Gender



Gender	Total Leavers	Higher Education	Further Education	Training	Employment	Voluntary Work	Unemployed Seeking	Unemployed NOT Seeking	Not Known
Male	588	34.2%	28.1%	4.8%	18.5%	0.3%	13.4%	0.7%	0.0%
Female	599	44.1%	31.4%	1.2%	12.0%	0.2%	9.8%	1.3%	0.0%

Female leavers (88.8%) are more likely than male leavers (85.9%) to enter positive destinations on leaving school. The proportion of female leavers who continue their education in either higher or further education is 13.2% higher than that for males, 75.5% compared to 62.2%. The percentage of males entering employment and training (23.3%) is 10.1% higher than that for females (13.2%). Males are more likely to become unemployed and seeking than females with over 57% of leavers reported as unemployed seeking being male.

Table 7: Gender split within each destination

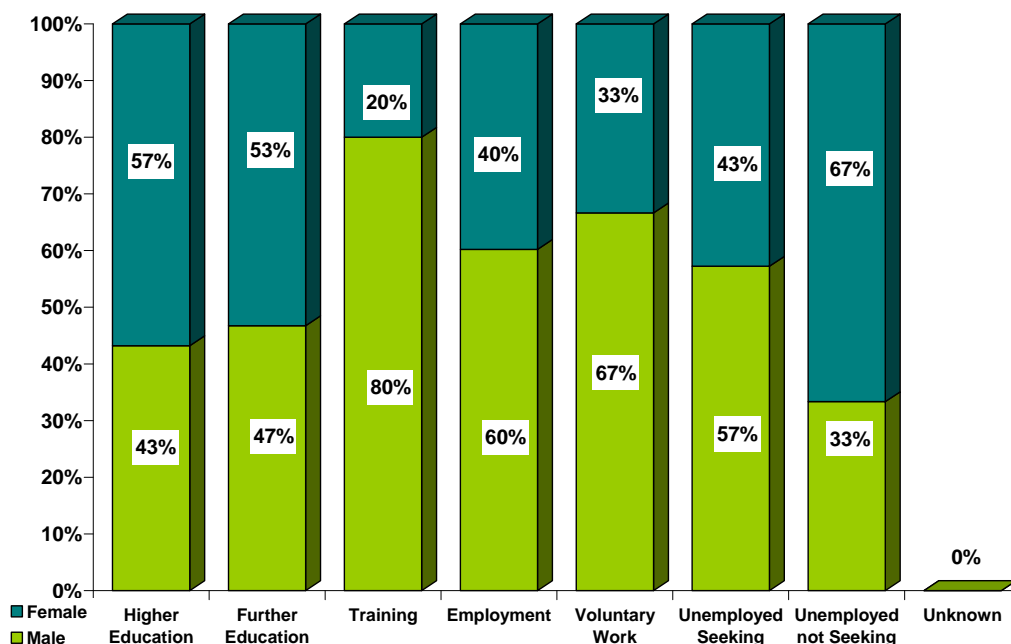


Table 8: Destination by SIMD

SIMD Decile ⁱⁱ	Most Deprived → Least Deprived									
	1	2	3	4	5	6	7	8	9	10
Higher Education	13%	13%	32%	31%	39%	52%	42%	56%	59%	61%
Further Education	43%	51%	28%	37%	25%	20%	20%	27%	20%	18%
Training	10%	*	*	*	*	*	*	*	*	*
Employment	12%	15%	15%	14%	18%	16%	28%	*	15%	15%
Voluntary Work	*	*	*	*	*	*	*	*	*	*
Unemployed Seeking	20%	17%	18%	13%	13%	7%	8%	10%	*	*
U/E Not Seeking	*	*	*	*	*	*	*	*	*	*
Unknown	*	*	*	*	*	*	*	*	*	*
Positive Destinations	79%	81%	81%	86%	85%	92%	92%	90%	94%	95%
Total	90	95	99	278	149	85	60	73	145	111
% of Total Leavers	8%	8%	8%	23%	13%	7%	5%	6%	12%	9%

Percentages based on 5 or less have been suppressed due to disclosure reasons.

- Across the SIMD areas the range entering positive destinations varies from **79%** in SIMD 1 to **95%** in SIMD 10. However, only SIMD 1 is lower than **80%**.
- Leavers who live in the least deprived area are more likely to enter Higher Education in comparison to leavers who live in all other areas. The proportion of leavers entering higher education from the least deprived area (**61%**) is approx four times the proportion for leavers from the most deprived areas (**13%**). The proportion of leavers entering higher education rises as you move from the most deprived areas to the least deprived
- The majority of leavers from all SIMD Decile areas enter higher or further education.
- The highest proportion of leavers unemployed seeking is in SIMD 1 and then decreases across the rest of the SIMD areas.
- There were **2** leavers whose SIMD area is unknown. Both entered positive destinations.

Table 9: Destination by Stage Left School.

Stage of Leaving ⁱⁱⁱ Destination	Statutory Summer Leaver	Statutory Winter Leaver	Post Statutory Leaver
Higher Education	*	*	49%
Further Education	56%	36%	26%
Training	8%	10%	1%
Employment	14%	18%	15%
Voluntary Work	*	*	*
Unemployed Seeking	22%	34%	7%
Unemployed Not Seeking	1%	2%	1%
Unknown	*	*	*
Positive Destinations	78%	64%	92%
Total Leavers	116	125	946
% of Total Leavers	10%	11%	80%

- It can be noted that the highest proportion of school pupils choose to remain at school past their statutory leave date and this has an impact on their positive progression from school. Leavers who stay on past their statutory leave date are more likely to progress to positive outcomes on leaving school with the majority entering higher education.
- Statutory winter leavers are less likely to enter positive destinations and the highest proportion is reported as being in further education. Statutory winter leavers are around five times as likely to be reported as unemployed seeking than a post statutory leaver.
- The highest proportions of statutory summer leavers enter further education with unemployed seeking being the 2nd highest proportion.

Section 2: Positive Destinations

Section 2.1 Higher and Further Education

Higher Education (HE): This category includes leavers following HND (Higher National Diploma) or HNC (Higher National Certificate) courses, degree courses, courses for the education and training of teachers and higher level courses for professional qualifications. **25** young people with a deferred, unconditional place in higher education for next year have also been included in this year's figures.

Further Education (FE): This category includes leavers undertaking non advanced further education which is not higher education.

From those reported in the SLDR, **465** leavers entered Higher Education and **353** entered Further Education. Detailed analysis can be provided on **100% (818)** of this cohort for whom we hold information on institution and course chosen – Higher Education **100% (465)** & Further Education **100% (353)**.

Table 10: HE Entrants by Institution Type

Institution Type	Total	%
University / HE College	367	79%
FE College	91	20%
Other ¹	7	2%

¹ Other Category includes institutions out with Scotland and other private institutions

Table 11: HE Students by Institution

Institution ^{iv}	Total	%	Institution	Total	%
Glasgow University	71	15%	Stirling University	13	3%
Strathclyde University	60	13%	Abertay University Dundee	7	2%
West of Scotland University	55	12%	St Andrews University	7	2%
Glasgow Caledonian University	48	10%	Napier University	6	1%
Dundee University	25	5%	The Robert Gordon University	5	1%
Scottish Agricultural College	24	5%	Outwith Scotland	6	1%
Edinburgh University	19	4%	Other Institutions	10	2%
Aberdeen University	18	4%	FE Colleges	91	20%

Institutions with less than 5 leavers are included in "Other Institutions" in the table above.

Table 12: HE Students by FE Colleges

Institution	Total	%	Institution	Total	%
Ayr College	45	10%	Glasgow Metropolitan College	5	1%
Kilmarnock College	15	3%	Other Institutions	15	3%
James Watt College	12	3%			

Institutions with less than 5 leavers are included in "Other Institutions" in the table above.

Table 13: FE Students by FE Colleges

Institution	Total	%	Institution	Total	%
Ayr College	236	67%	Dumfries and Galloway College	6	2%
James Watt College	44	12%	Cardonald College	5	1%
Kilmarnock College	37	10%	Other Institutions	17	5%
Reid Kerr College	8	2%			

Institutions with less than 5 leavers are included in "Other Institutions" in the table above.

It can be noted from tables 12 & 13 that the majority of leavers who continue their studies post school at FE Colleges, chose to attend local institutions.

Table 14: Higher Education Course Information

Course Area	Total	%	Course Area	Total	%
Science & Mathematics	71	15%	Performing Arts	20	4%
Arts & Social Sciences	70	15%	Teaching	18	4%
Health & Medicine	57	12%	Finance	17	4%
Engineering	31	7%	Languages	14	3%
Computing & ICT	29	6%	Construction	12	3%
Sport, Leisure & Sport Science	27	6%	Communications & Media	10	2%
Administration & Management	26	6%	Animals, Land & Environment	7	2%
Law	22	5%	Hospitality, Catering & Tourism	6	1%
Art and Design	20	4%	Other course areas	8	2%

Table 15: Further Education Course Information

Course Area	Total	%	Course Area	Total	%
Social, Caring & Advisory Services	49	14%	Personal Dev. & Prep Courses	13	4%
Construction	44	12%	Health & Medicine	13	4%
Art and Design	30	8%	Security & Protective Services	13	4%
Hairdressing & Beauty	27	8%	Engineering	12	3%
Hospitality, Catering & Tourism	24	7%	Garage Services	12	3%
General Education (Highers, etc)	20	6%	Computing & ICT	11	3%
Performing Arts	16	5%	Communications & Media	8	2%
Sport, Leisure & Sport Science	15	4%	Animals, Land & Environment	7	2%
Administration & Management	14	4%	Science & Mathematics	5	1%
Arts & Social Sciences	14	4%	Other course areas	6	2%

This is the 3rd year that SDS has gathered fuller data, across Scotland, about the course areas entered by school leavers. It shows that Science & Maths and Arts & Social Science courses have remained the most popular areas for those entering higher education.

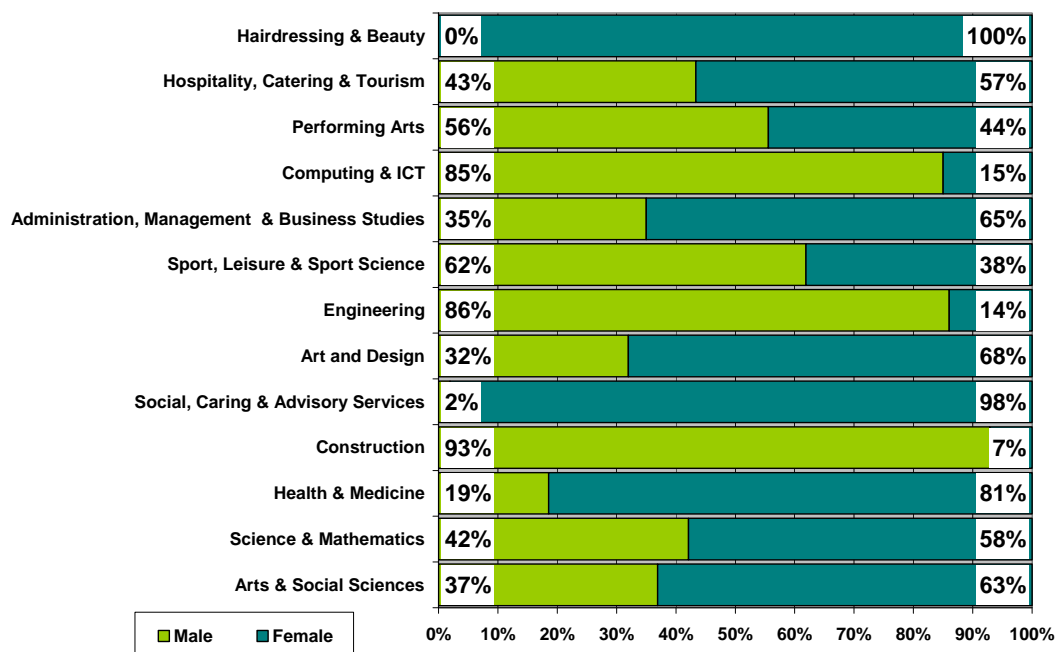
Within further education, leavers studying vocational subjects such as Social, Caring & Advisory Services and Construction have also remained the most popular choices.

Table 16: Course Information by Gender

Course Area	Male		Female	
	Total	%	Total	%
Arts & Social Sciences	31	8%	53	12%
Science & Mathematics	32	9%	44	10%
Health & Medicine	13	4%	57	13%
Construction	52	14%	*	*
Social, Caring & Advisory Services	*	*	50	11%
Art and Design	16	4%	34	8%
Engineering	37	10%	6	1%
Sport, Leisure & Sport Science	26	7%	16	4%
Administration & Management	14	4%	26	6%
Computing & ICT	34	9%	6	1%
Performing Arts	20	5%	16	4%
Hospitality, Catering & Tourism	13	4%	17	4%
Hairdressing & Beauty	*	*	29	6%
Law	9	2%	13	3%
Finance	12	3%	9	2%
General Education (Highers, etc)	6	2%	14	3%
Communications & Media	9	2%	9	2%
Teaching	5	1%	13	3%
Security & Protective Services	9	2%	6	1%
Animals, Land & Environment	8	2%	6	1%
Languages	*	*	12	3%
Personal Dev. & Prep Courses	5	1%	8	2%
Garage Services	9	2%	*	*
Sales & Marketing	*	*	*	*
Transport & Distribution	*	*	*	*

Courses with less than 5 leavers have been suppressed

Table 17: Gender split within the course areas in both FE/HE



As with last year the top three course areas for male leavers being Construction, Engineering and Computing & ICT with **33%** of leavers entering these areas. In comparison female leavers have opted to enter subjects Health & Medicine, Social, Caring & Advisory Services and Arts & Social Sciences with **36%** of leavers entering these areas. The most popular area for all leavers is Arts & Social Sciences with the majority of entrants being female (**63%**). Subjects in Construction, Engineering and Computing & ICT remain male dominated while Hairdressing & Beauty, Social, Caring & Advisory Services and Health & Medicine related courses are female dominated.

Section 2.2: Employment

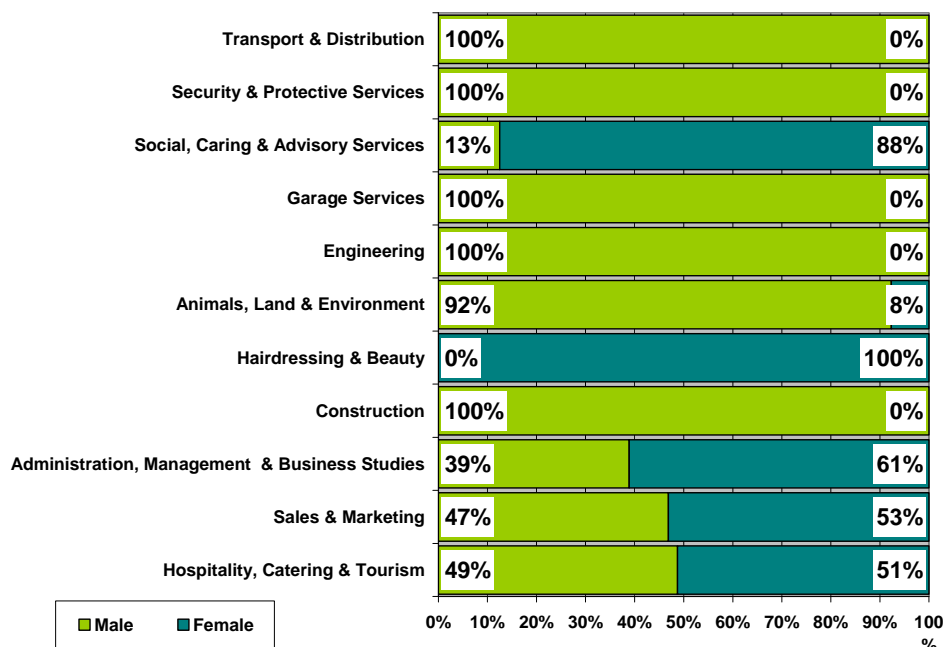
Employment: This category includes those who are employed and who are in receipt of payment from their employers. It includes young people undertaking training in employment through Skillseekers and Modern Apprenticeships. **181** young people entered Employment and analysis can be provided on all of those entering employment for whom we hold information about the occupational area entered.

Table 18: Those entering Employment by Occupational Area

Occupational Area	Male		Female	
	Total	%	Total	%
Hospitality, Catering & Tourism	19	17%	20	28%
Sales & Marketing	15	14%	17	24%
Administration & Management	7	6%	11	15%
Construction	17	16%	*	*
Hairdressing & Beauty	*	*	15	21%
Animals, Land & Environment	12	11%	*	*
Engineering	11	10%	*	*
Garage Services	8	7%	*	*
Social, Caring & Advisory Services	*	*	7	10%
Security & Protective Services	7	6%	*	*
Transport & Distribution	7	6%	*	*
Sport, Leisure & Sport Science	5	5%	*	*
Finance	*	*	*	*

Occupational areas with less than 5 leavers have been suppressed

Table 19: Gender split within the top employment areas



The most popular area of employment entered by school leavers continues to be Hospitality, Catering & Tourism. This is also the most popular area for both males and females. Construction remains popular for male leavers with **16%** gaining employment in this occupational area which is lower than last year (**21.2%**). The 3 most popular occupational areas with female leavers are Hospitality, Catering & Tourism, Sales & Marketing (including retail operations) and Hairdressing & Beauty which is the same as last year.

All the leavers who enter the occupational areas of Construction, Garage services and Engineering are male and Hairdressing & Beauty roles remain female dominated but around half of the leavers who find work in Hospitality, Catering & Tourism are male.

Section 3: Other Destinations

School leavers who do not achieve a positive destination on leaving school are known as the MCMC group and are key customers for Skills Development Scotland and our partner organisations. The SLDR is a snapshot in time and should only be used as an indicator.

Unemployed and seeking employment or training: This category includes those who are in contact with SDS and are known by them to be seeking employment or training. This is based on regular contact between SDS and the client. This does not refer to the definition of ‘unemployed’ used by the Benefits Agency to calculate published unemployment rates. In 2009-10 it also included those individuals undertaking personal skills development^v **3** or **2%** of the unemployed seeking cohort

Unemployed and not seeking employment or training: This category includes all those individuals who are not seeking employment or training for a range of reasons. These individual circumstances may involve sickness, prison, pregnancy, caring for children or other dependents or taking time out.

Section 3.1 Unemployed Seeking

The table provides a comparison of the percentage of unemployed seeking clients with specific characteristics as opposed to the rate of the full SLDR cohort.

Table 20: Client Characteristics

Characteristics	% of Full SLDR	% of Unemployed Seeking
Gender		
Male	50%	57%
Female	50%	43%
Stage Left School		
Statutory Summer Leaver	10%	18%
Statutory Winter Leaver	11%	31%
Post Statutory Leaver	80%	51%
Qualifications on Leaving School^{vi}		
Access 1 / No formal Qualifications	0%	0%
Access 2&3/Foundation Stand. Grade	2%	6%
General Standard Grade/ Intermediate1	16%	40%
Credit Standard Grade/ Intermediate 2	28%	28%
Highers/Advanced Higher	53%	24%
Unknown	1%	3%
Health And Additional Support Needs^{vii}		
Looked After at Home/ Looked after away from home ^{viii}	3%	10%
Additional Support Plan Recorded ^{ix}	9%	17%
Health Factor/Additional Support Need Identified ^x	14%	25%

Table 20: Client Characteristics (cont)

Characteristics		% of Full SLDR	% of Unemployed Seeking
SIMD Decile Ranking /Deprivation (SIMD 2009)			
Most deprived	1	8%	13%
	2	8%	12%
	3	8%	13%
	4	23%	27%
	5	13%	14%
	6	7%	4%
	7	5%	4%
	8	6%	5%
	9	12%	5%
Least Deprived	10	9%	3%
	Unknown	0%	0%

- Although male leavers account for **50%** of the leaving cohort they account for **57%** of leavers reported as unemployed seeking.
- Statutory winter leavers represent only **11%** of the whole SLDR cohort but are disproportionately represented within the leavers reported as unemployed seeking at **31%**, as are statutory summer leavers who represent **10%** of the cohort and **18%** of unemployed seeking
- The largest proportion of unemployed seeking leavers have general level standard grades.
- Leavers who had a period of being looked after at home or away from home are also disproportionately represented within the leavers reported as unemployed seeking

Table 21: Leavers by Intermediate Data zone

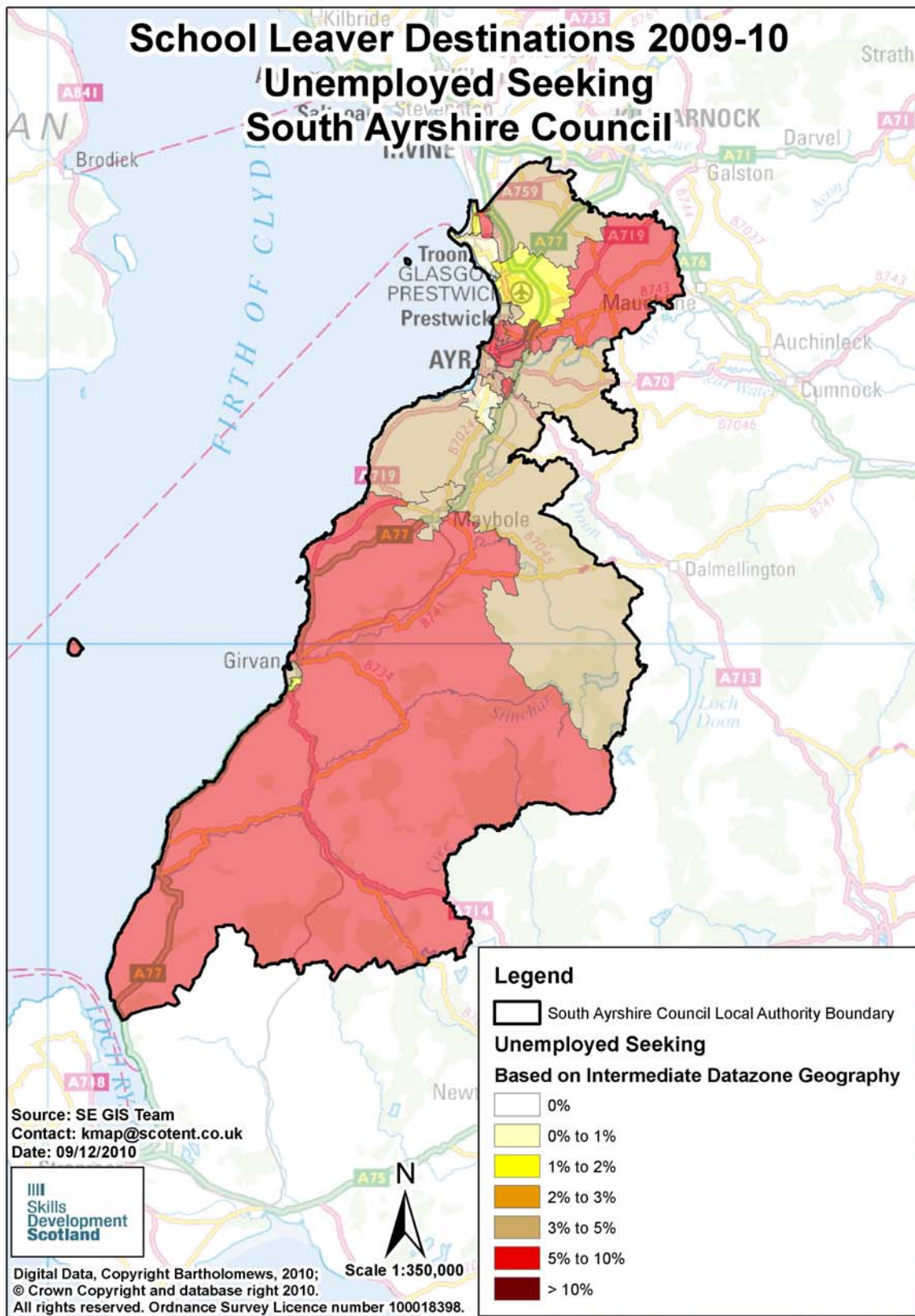
There were **138** leavers from South Ayrshire schools who were reported as unemployed seeking in the SLDR. By using postcodes, we were able to identify areas within the authority where unemployed school leavers were living. However, at the snapshot, **10** of the leavers were living outside the local authority area but a further **5** unemployed seeking school leavers from other local authority schools were residing within the local authority boundaries. The analysis below is based on **133** leavers residing in the authority and who SDS held postcode information for. The table below shows the intermediate data zones with the highest percentage of unemployed leavers.

Intermediate Data zone ^{xi}	Total	%	Intermediate Data zone	Total	%
Dalmilling and Craigie	13	10%	Heathfield	7	5%
Annbank, Mossblown and Tarbolton - the Coalfields	9	7%	Muirhead	7	5%
Ayr North Harbour, Wallacetown and Newton South	9	7%	Newton North	7	5%
Lochside, Braehead and Whitletts	9	7%	Prestwick West	6	5%
Castlehill and Kincaidston	8	6%	Ayr South Harbour and Town Centre	5	4%
Carrick South	7	5%	Belmont	5	4%

Intermediate Data zone areas with less than 5 leavers have been suppressed

Table 22: Destinations of School Leavers: % Unemployed Seeking, 2009/10

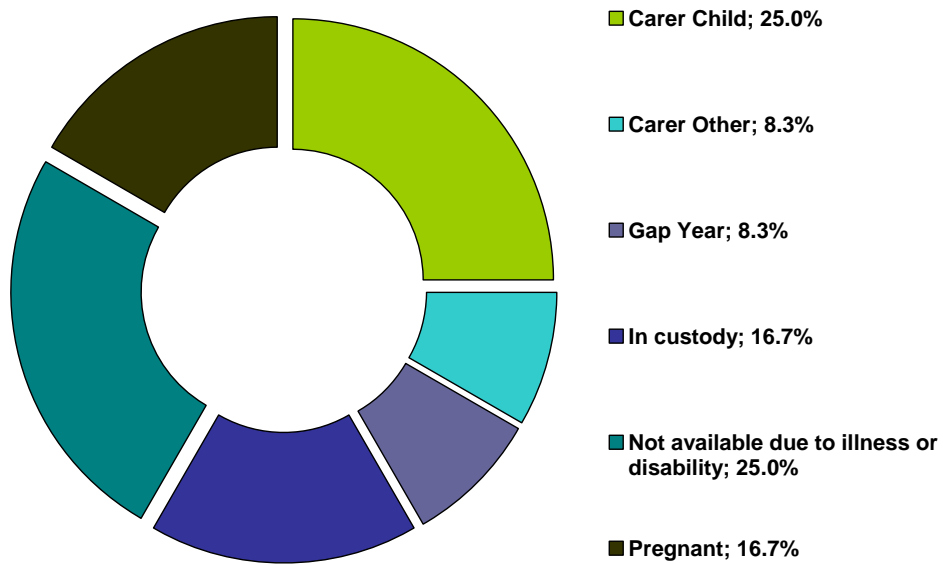
The map shows the intermediate data zones where the 133 leavers who were residing within the local authority boundary reside. Percentages have been calculated as a proportion of the number of leavers reported



Section 3.2 Unemployed NOT Seeking

There were **12** school leavers within this category.

Table 23: Individual Circumstances of those Unemployed NOT Seeking



Section 3.3 Unknown

There were **no** school leavers whose current destination was unknown at the time of SLDR.

Table 24: Destinations by School, Percentage

School	Higher Education	Further Education	Training	Employment	Voluntary Work	Unemployed Seeking	Unemployed Not Seeking	Not Known	Total Leavers	% Pos	% Other
Ayr Academy	23.2%	38.4%	7.1%	10.7%	0.0%	18.8%	1.8%	0.0%	112	79.5%	20.5%
Belmont Academy	45.6%	25.6%	3.2%	12.4%	0.8%	10.8%	1.6%	0.0%	250	87.6%	12.4%
Carrick Academy	26.4%	33.0%	2.2%	25.3%	0.0%	13.2%	0.0%	0.0%	91	86.8%	13.2%
Girvan Academy	33.6%	38.2%	5.3%	14.5%	0.0%	7.6%	0.8%	0.0%	131	91.6%	8.4%
Kyle Academy	39.3%	25.6%	0.9%	19.7%	0.0%	13.7%	0.9%	0.0%	117	85.5%	14.5%
Marr College	50.6%	22.3%	1.2%	15.7%	0.6%	9.0%	0.6%	0.0%	166	90.4%	9.6%
Prestwick Academy	43.2%	27.7%	2.3%	15.5%	0.0%	10.8%	0.5%	0.0%	213	88.7%	11.3%
Queen Margaret Academy	32.7%	37.4%	1.9%	13.1%	0.0%	13.1%	1.9%	0.0%	107	85.0%	15.0%
South Ayrshire Council	39.2%	29.7%	2.9%	15.2%	0.3%	11.6%	1.0%	0.0%	1,187	87.4%	12.6%

Background Notes:

- ⁱ **Positive Destinations:** includes higher education, further education, training, employment and voluntary work. See text above for explanation of each destination heading.
- ⁱⁱ **The Scottish Index of Multiple Deprivation (SIMD):** SIMD identifies small area concentrations of multiple deprivation across all of Scotland in a consistent way. SDS uses a file created by Scottish Neighbourhood Statistics to identify SIMD based on an individual leaver's postcode. The leaver's postcode is based on the last known address of the leaver as recorded on our client management system. Where there were gaps in the data held on our CMS, the last known address supplied in the annual import of pupil details has been used. As the last known postcode is used it may be that a leaver from one local authority was living in another local authority at the time of the return. Therefore, the SIMD relates to where a leaver was living and not the concentration of SIMD within a local authority.
- ⁱⁱⁱ **Stage of Leaving:** A **statutory summer leaver** is a school leaver who chooses to leave school at the earliest opportunity (31st May) when they become eligible to leave school i.e. their 16th birthday falls on or between 1st March and 30th September in their year of leaving. A **statutory winter leaver** is a school leaver who chooses to leave school at the earliest opportunity when they become eligible to leave school i.e. their 16th birthday falls between 1st October and the last day in February. A **post statutory leaver** is a school leaver who chose to remain at school past their statutory leave date e.g. a winter leaver who would have been eligible to leave at the winter leave date but choose to remain at school until the summer leave date. Included in this group are leavers who have past their statutory leave date and have left school at any stage throughout the year.
- ^{iv} **Institutions:** through our follow up of leavers, we confirm Further and Higher Education destinations and as part of the process we request further information about the institution a leaver is attending. This is not a requirement of the Scottish Government and the information displayed is based on the recorded detail on Insight, the SDS
- ^v **Personal Skills Development:** - Some leavers are not yet ready, or in a position to make an immediate transition to a formal positive destination. In such cases leavers may participate in learning opportunities / personal and social development activities with the aim of improving their confidence and employability. These programmes can be viewed as a stepping stone towards a more formal positive destination. They are often delivered by a community learning and development or third sector organisation and can include the activity agreement pilots. It was agreed, with the Scottish Government, that individuals undertaking these activities would be reported within the unemployed seeking SLDR category.
- ^{vi} **Qualifications on leaving school:** This information is based on pre-appeal information from the Scottish Qualifications Agency where SDS received information about a leaver's qualifications and a robust match of records was made. Where no match was made the qualification level has been gathered through our interaction with individuals.
- ^{vii} **Qualifications on leaving school:** This information is based on pre-appeal information from the Scottish Qualifications Agency where SDS received information about a leaver's qualifications and a robust match of records was made. Where no match was made the qualification level has been gathered through our interaction with individuals.
- ^{viii} **Looked After at Home/ Looked after away from home:** This refers to recent school leavers that SDS has recorded information that they had an episode of being looked after at home or looked after away from home. This information is gathered in a variety of ways including local SDS contact with Social Work departments, data received through the school import process or via direct contact with individuals. It is recognised that this information may not be complete when compared with similar data from social work services departments. However SDS is working with the Scottish Government and local authorities to look at improving the sharing of information in respect of these young people therefore the figures used are indicative.
- ^{ix} **Additional Support Plan Recorded:** SDS receives data from all local authority schools and school centres with pupils in stages S1-S6 or special schools to import into our client management system. We receive information about those who have co-ordinated support plans (CSP) and individualised educational programmes. We also gather information directly from individuals and via our ongoing work with schools. We acknowledge that the data may vary from that held by local authorities therefore the figures used are indicative.
- ^x **Health Factor/Additional Support Need Identified:** SDS receives data from all local authority schools and school centres with pupils in stages S1-S6 or special schools to import into our client management system. We receive information about those who have identified additional support needs. We also gather information directly from individuals and via our ongoing work with schools. We acknowledge that the data may vary from that held by local authorities therefore the figures used are indicative.

^{xi}**Intermediate Data zone Geography:** The data zone is the key small area statistical geography in Scotland. The intermediate geography is built up from data zones and can be used to disseminate statistics that are not suitable for release at the data zone level. Due to the small number of individuals it has been decided to use the intermediate level geography. There are 1235 intermediate zones in Scotland, containing on average 4000 household residents and these have been designed to respect local authority boundaries as at 2001 Census.