

School Leaver Destination Report

2009 – 2010

Scottish Borders Council

Contents

Section 1: Overview – Main Findings	3
<i>Table 1: Destination Totals</i>	4
<i>Table 2: Local Authority Comparison to Scotland</i>	5
Section 1.1 - Annual Trends	5
<i>Table 3: Trends 2000 – 2010 of Positive Destinations</i>	5
<i>Table 4: Trends 2000 – 2010 of Other Destinations</i>	6
<i>Table 5: Destinations from 2000 to 2010</i>	6
Section 1.2: Client Characteristics	7
<i>Table 6: Destination split by Gender</i>	7
<i>Table 8: Destination by SIMD</i>	8
<i>Table 9: Destination by Stage Left School</i>	9
Section 2: Positive Destinations	10
Section 2.1 Higher and Further Education	10
<i>Table 10: HE Entrants by Institution Type</i>	10
<i>Table 11: HE Students by Institution</i>	10
<i>Table 12: HE Students by FE Colleges</i>	10
<i>Table 13: FE Students by FE Colleges</i>	11
<i>Table 14: Higher Education Course Information</i>	11
<i>Table 15: Further Education Course Information</i>	11
<i>Table 16: Course Information by Gender</i>	12
<i>Table 17: Gender split within the course areas in both FE/HE</i>	12
Section 2.2: Employment	13
<i>Table 18: Those entering Employment by Occupational Area</i>	13
<i>Table 19: Gender split within the top employment areas</i>	13
Section 3: Other Destinations	15
Section 3.1 Unemployed Seeking	15
<i>Table 20: Client Characteristics</i>	15
<i>Table 21: Leavers by Intermediate Data zone</i>	16
<i>Table 22: Destinations of School Leavers: % Unemployed Seeking, 2009/10</i>	18
<i>Table 23: Individual Circumstances of those Unemployed NOT Seeking</i>	19
Section 3.3 Unknown	19
<i>Table 24: Destinations by School, Percentage</i>	20
<i>Background Notes:</i>	21

Background

The School Leaver Destination Return (SLDR) is a statistical return undertaken by Skills Development Scotland (SDS) on behalf of the Scottish Government. The Return is based on a follow up of young people who left school between the 1st of August 2009 and the 31st of July 2010. This exercise was carried out during the month of September 2010.

The Scottish Government use the data produced from the Return to report against the National Indicator and target, "increase the proportion of school leavers (from Scottish publicly funded schools) in positive and sustained destinations (FE, HE, employment or training)". Partners, particularly Local Authorities, use the data to inform initiatives developed as part of the More Choices More Chances Strategy, to evidence the success of initiatives, measure progress against targets, and to identify areas to target resources to improve the post school outcomes for young people.

Methodology

The return is carried out during the month of September with staff across Skills Development Scotland following up over 55,000 school leavers. Destinations are confirmed throughout the follow up period and the destination that is reported is the destination that is known at the snapshot date. This year, we reported the information as known to us on 2nd October 2010. Destinations of young people are fluid in nature, therefore, it is possible that a leaver entered employment or training on leaving school but by the time the snapshot was taken this destination may have changed to another destination.

The information that is gathered is recorded within the SDS CMS system (Insight) which enables us to produce MIS reports and populate the data fields to be sent to the Government. This data is transferred at an individual level and undergoes a matching & validation process until a cohort is agreed. This allows the government's analytical services unit to match the client's individual outcome with other indicators such as social economic background, additional support needs and stage of leaving, etc. All information in this report, however, is based upon data held within the SDS Insight database which has been analysed to produce the graphs and tables contained within this report.

Analysis

Only leavers from publicly funded secondary schools are within the scope of the SLDR. This report relates to **1,250** leavers from publicly funded secondary schools. This relates to approximately a **4%** increase in the number of leavers reported this year in comparison to the SLDR in 2008-09.

Section 1: Overview – Main Findings

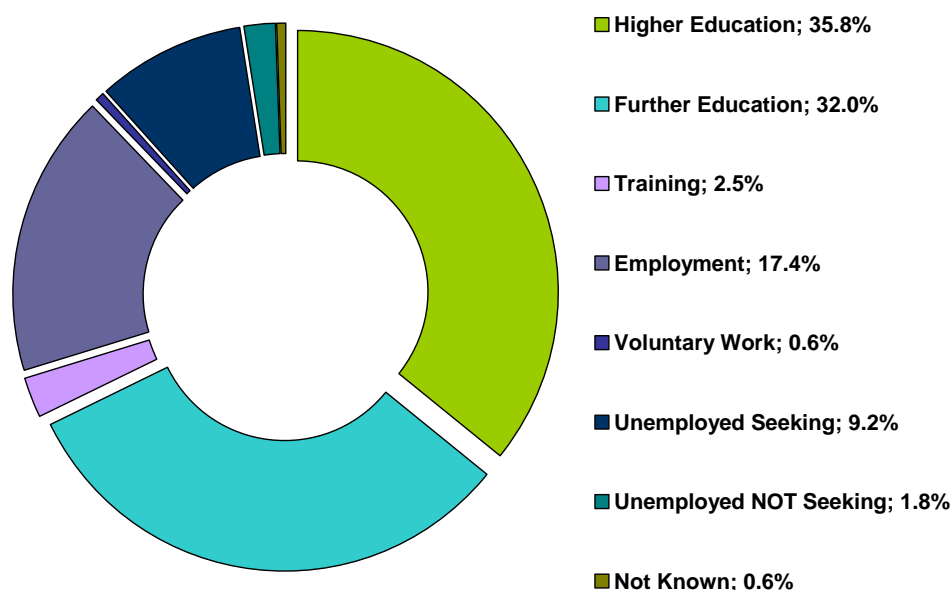
- Overall the percentage of leavers entering a positive destinationⁱ is **88.3%**, a rise of **0.9%** on last year. This rise has resulted in the authority moving from the thirteenth highest proportion of positive destinations by local authority to the twelfth.
- There was a decrease this year in the proportion of leavers entering further and higher education to **67.8%**, a fall of **0.8%** compared to last year. The percentage of leavers entering higher education has decreased by **1%** to

Skills Development Scotland Scottish Borders Council School Leaver Destination Report 2009-10

35.8% since last year. This now places Scottish Borders as the authority with the thirteenth highest proportion of leavers entering higher education. The number of leavers entering higher education has been fairly steady over the last ten years with a drop of just under **2%** over the period.

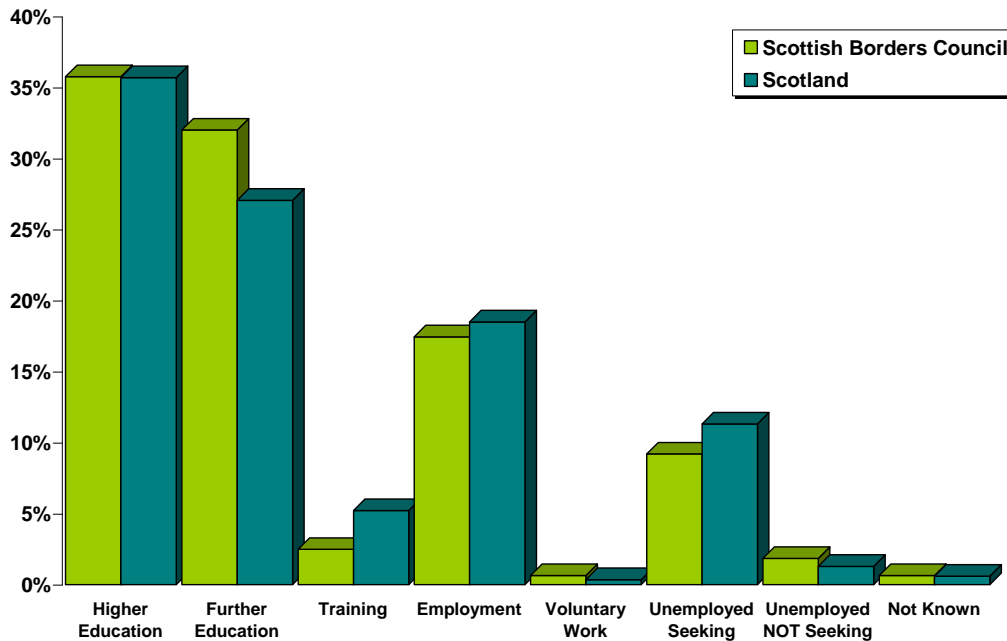
- The percentage of leavers entering further education increased last year to **32.0%** which is **5%** higher than the Scottish average. There has been a steady rise of **7%** in the number of leavers entering further education since 2000-01.
- The percentage of leavers entering employment has increased since last year from **16.4%** to **17.4%**, however, in 2008-9 there was a significant drop of **9.1%** in the number entering employment, and there has been an overall **3.1%** drop since 2000-01.
- The percentage entering training has increased slightly by **0.2%** from last year to **2.5%**. The lowest number entering training was in 2001 – 02 at **0.7%** and is now currently just **0.5%** above the 2000 – 01 level (**2%**).
- The percentage of leavers who are unemployed seeking has fallen slightly to **9.2%** from **9.8%**, which is **2.1%** lower than the national average. The highest level of unemployed seeking in the last 10 years was **10.5%** in 2007 – 08.
- School leavers whose destination is unknown to SDS has fallen to its lowest recorded level at **0.6%**.

Table 1: Destination Totals



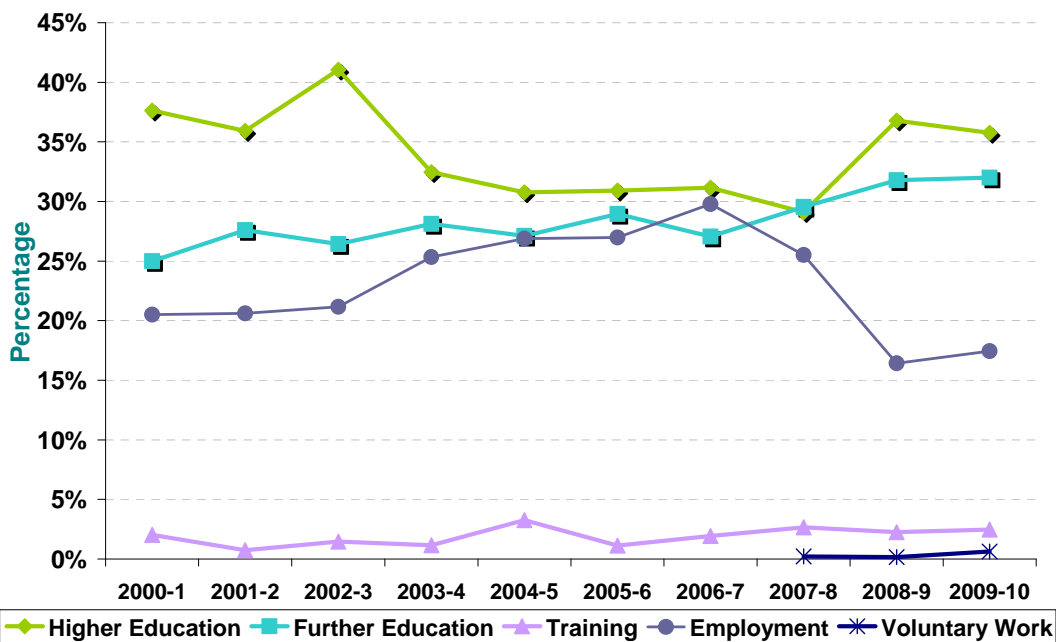
Area	Total Leavers	Higher Education	Further Education	Training	Employment	Voluntary Work	Unemployed Seeking	Unemployed NOT Seeking	Not Known
Scottish Borders Council	1,250	35.8% 447	32.0% 400	2.5% 31	17.4% 218	0.6% 8	9.2% 115	1.8% 23	0.6% 8
Scotland	54,097	35.7% 19,309	27.1% 14,637	5.2% 2,822	18.5% 10,005	0.3% 187	11.3% 6,117	1.3% 696	0.6% 324

Table 2: Local Authority Comparison to Scotland



Section 1.1 - Annual Trends

Table 3: Trends 2000 – 2010 of Positive Destinations

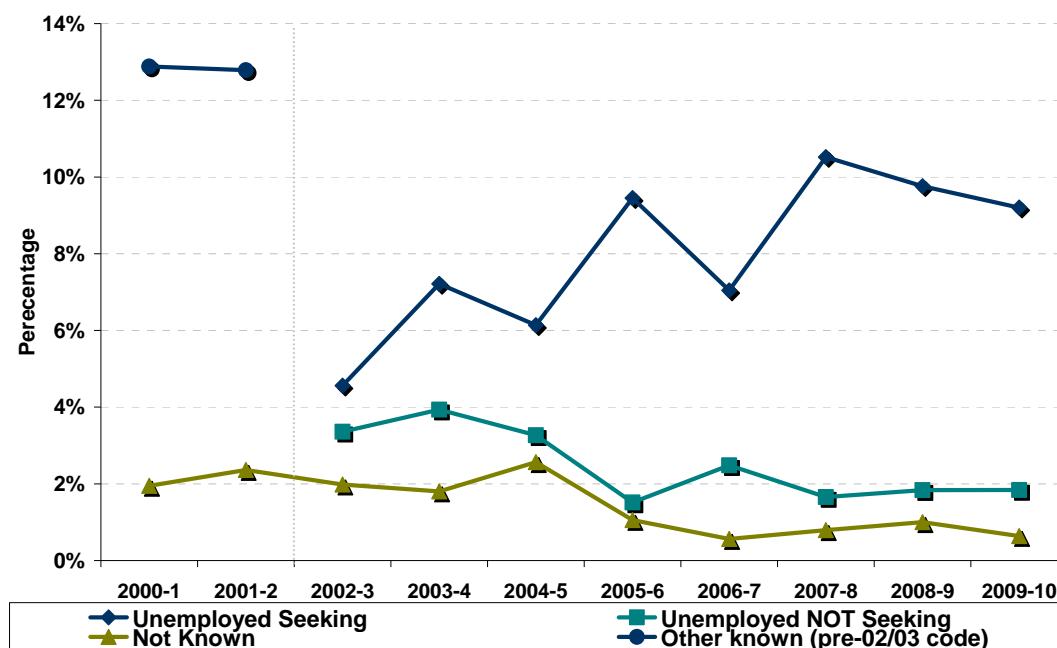


Note: Voluntary Work has been included as a separate destination category since the 2007- 08 SLDR return but was reported within the unemployed not seeking category previously.

The percentage of leavers entering higher education is currently **35.8%** which is **1.4%** lower than 10 years ago and peaked in 2002 – 03 at **41%**. The proportion of leavers entering further education has been rising steadily over the last 10 years by **7%** and is at its highest level this year at **32%**. In comparison there has been a drop by **3%** in the number of leavers entering employment over the last 10 years to **17.4%**. The lowest level was **16.4%** in 2008 - 09.

Skills Development Scotland Scottish Borders Council School Leaver Destination Report 2009-10

Table 4: Trends 2000 – 2010 of Other Destinations



The proportion of leavers reported as unemployed seeking has increased from **4.6%** to **9.2%** over the last 10 years peaking at **10.5%** in 2007 - 08. As previously stated, the percentage of leavers unknown has dropped to the lowest level ever at **0.6%**.

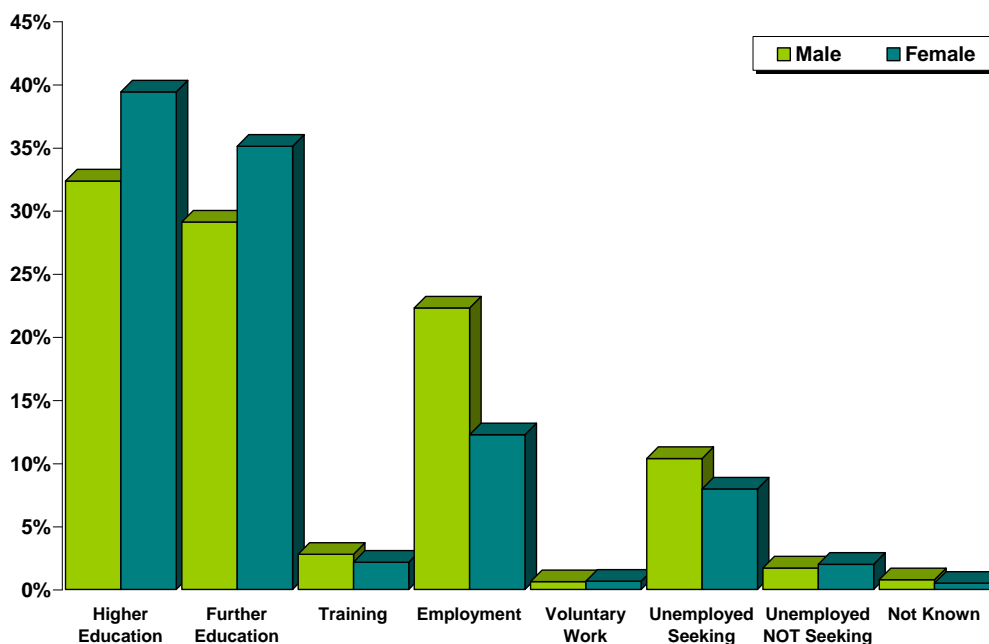
Table 5: Destinations from 2000 to 2010

Year	Total Leavers	Higher Education	Further Education	Training	Employment	Voluntary Work	Unemployed Seeking	Unemployed NOT Seeking	Not Known	Other Known
2000-1	1,180	37.6%	25.0%	2.0%	20.5%				1.9%	12.9%
2001-2	1,228	35.9%	27.6%	0.7%	20.6%				2.4%	12.8%
2002-3	1,162	41.0%	26.4%	1.5%	21.2%		4.6%	3.4%	2.0%	
2003-4	1,220	32.5%	28.1%	1.1%	25.3%		7.2%	3.9%	1.8%	
2004-5	1,287	30.8%	27.1%	3.3%	26.9%		6.1%	3.3%	2.6%	
2005-6	1,323	30.9%	28.9%	1.1%	27.0%		9.4%	1.5%	1.1%	
2006-7	1,249	31.1%	27.1%	1.9%	29.8%		7.0%	2.5%	0.6%	
2007-8	1,388	29.1%	29.5%	2.7%	25.5%	0.2%	10.5%	1.7%	0.8%	
2008-9	1,199	36.8%	31.8%	2.3%	16.4%	0.2%	9.8%	1.8%	1.0%	
2009-10	1,250	35.8%	32.0%	2.5%	17.4%	0.6%	9.2%	1.8%	0.6%	

Note: Prior to 2002-03 both the unemployed seeking and unemployed not seeking categories were reported in a separate category called Other Known. This is reflected in the table and graph above.

Section 1.2: Client Characteristics

Table 6: Destination split by Gender



Gender	Total Leavers	Higher Education	Further Education	Training	Employment	Voluntary Work	Unemployed Seeking	Unemployed NOT Seeking	Not Known
Male	646	32.4%	29.1%	2.8%	22.3%	0.6%	10.4%	1.7%	0.8%
Female	604	39.4%	35.1%	2.2%	12.3%	0.7%	7.9%	2.0%	0.5%

There is a fairly even balance between the percentage of males and females entering a positive destination on leaving school with the males at **87.2%** and the females at **89.6%**. The proportion of females continuing in either further or higher education is **13%** higher than the males, at **74.5%** compared to **61.5%** respectively.

The percentage of males entering employment and training at **25.1%** is **10.7%** higher than that for females at **14.4%**. There percentage of male leavers who are unemployed seeking is slightly higher by **3.8%**, compared to females at **12.7%**.

Table 7: Gender split within each destination

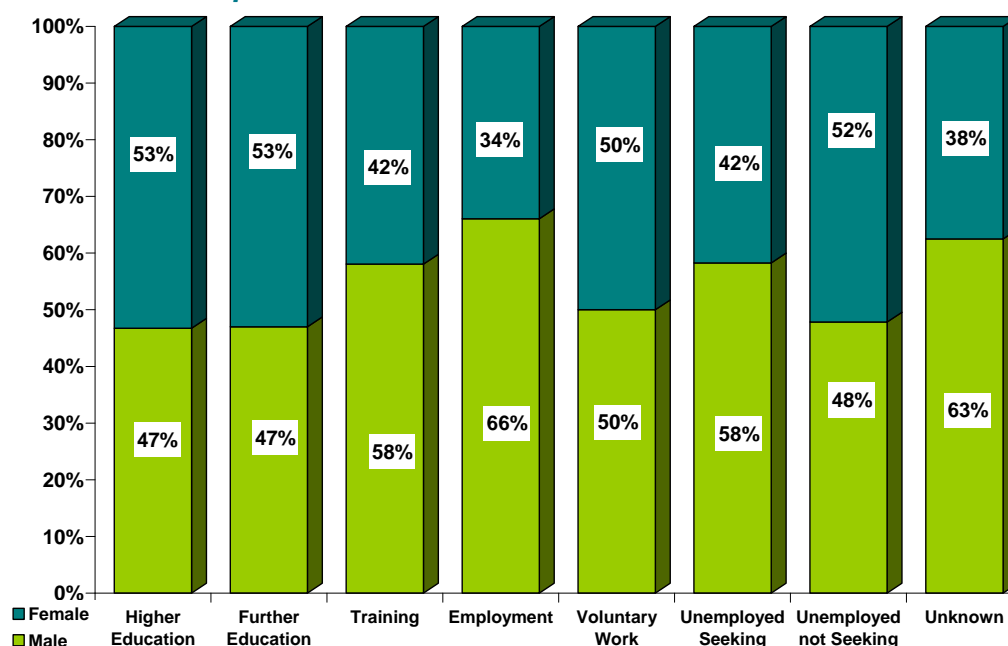


Table 8: Destination by SIMD

SIMD Decile ⁱⁱ	Most Deprived → Least Deprived									
	1	2	3	4	5	6	7	8	9	10
Higher Education	*	*	12%	23%	29%	32%	43%	45%	45%	47%
Further Education	47%	47%	49%	43%	38%	31%	26%	29%	25%	21%
****Training	13%	8%	2%	4%	*	*	*	*	*	*
**Employment	13%	*	15%	20%	17%	20%	17%	17%	16%	29%
Voluntary Work	0%	*	*	*	*	*	*	*	*	*
Unemployed Seeking	27%	17%	17%	8%	11%	12%	8%	4%	12%	*
***U/E Not Seeking	0%	*	*	*	3%	*	*	*	*	*
Unknown	0%	*	*	*	*	*	*	*	*	*
Positive Destinations	73%	75%	78%	92%	86%	86%	88%	95%	88%	97%
Total	30	36	41	79	200	169	319	261	75	38
% of Total Leavers	2%	3%	3%	6%	16%	14%	26%	21%	6%	3%

Percentages based on 5 or less have been suppressed due to disclosure reasons.

- Leavers who live in the least deprived areas are more likely to enter positive destinations on leaving school than those from the most deprived areas. For example, there are a similar percentage of leavers from SIMD 10 and SIMD 2 but their outcomes are different. There is a **22%** difference in the proportion entering positive outcomes with **97%** of those in SIMD 10 entering positive destinations compared to **75%** in SIMD 2.
- Leavers who live in the least deprived areas are more likely to enter Higher Education in comparison to leavers who live in the most deprived areas. The proportion of leavers entering higher education from the least deprived area SIMD 10 was **47%** and the proportion of leavers from the most deprived area SIMD 1 was **0%**.
- Leavers from most deprived areas are more likely to be unemployed seeking than leavers from the least deprived areas. Using the example of SIMD 1 and

Skills Development Scotland Scottish Borders Council School Leaver Destination Report 2009-10

SIMD 10, as above, there were **27%** of leavers reported as unemployed seeking from SIMD 1 in comparison to **3%** in SIMD 10.

Table 9: Destination by Stage Left School

Stage of Leaving ⁱⁱⁱ Destination	Statutory Summer Leaver	Statutory Winter Leaver	Post Statutory Leaver
Higher Education	*	*	47%
Further Education	56%	44%	25%
Training	8%	5%	1%
Employment	20%	18%	17%
Voluntary Work	*	*	1%
Unemployed Seeking	13%	25%	6%
Unemployed Not Seeking	*	*	2%
Unknown	*	*	*
Positive Destinations	85%	72%	91%
Total Leavers	194	117	939
% of Total Leavers	16%	9%	75%

- It can be noted that the majority of school pupils choose to remain at school past their statutory leave date and this has an impact on their positive progression from school. Leavers who stay on past their statutory leave date are more likely to progress to positive outcomes on leaving school with the majority entering higher education.
- Although they are in the minority, statutory winter leavers are less likely to enter positive destinations than other leavers. The highest proportion of winter leavers are reported as being in further education. They **(25%)** are almost five times more likely to be reported as unemployed seeking than a post statutory leaver **(6%)**.
- The highest proportion of statutory summer leavers enter further education **(56%)** with employment being the 2nd highest **(20%)**.

Section 2: Positive Destinations

Section 2.1 Higher and Further Education

Higher Education (HE): This category includes leavers following HND (Higher National Diploma) or HNC (Higher National Certificate) courses, degree courses, courses for the education and training of teachers and higher level courses for professional qualifications. **58** young people with a deferred, unconditional place in higher education for next year have also been included in this year's figures.

Further Education (FE): This category includes leavers undertaking non advanced further education which is not higher education.

From those reported in the SLDR, **447** leavers entered Higher Education and **400** entered Further Education. Detailed analysis can be provided on **99.8% (845)** of this cohort for whom we hold information on institution and course chosen – Higher Education **100% (447)** & Further Education **99.5% (398)**.

Table 10: HE Entrants by Institution Type

Institution Type	Total	%
University/HE College	355	79%
FE College	69	15%
Other	23	5%

¹ Other Category includes institutions out with Scotland and other private institutions

Table 11: HE Students by Institution

Institution ^{iv}	Total	%	Institution	Total	%
Edinburgh University	54	12%	Queen Margaret University Edinburgh	16	4%
Aberdeen University	37	8%	Heriot Watt University	12	3%
Dundee University	35	8%	St Andrews University	8	2%
Stirling University	34	8%	Glasgow Caledonian University	7	2%
Napier University	32	7%	Scottish Agricultural College	5	1%
The Robert Gordon University	31	7%	West of Scotland University	5	1%
Glasgow University	29	6%	Outwith Scotland	22	5%
Abertay University Dundee	23	5%	Other Institutions	8	2%
Strathclyde University	20	4%	FE Colleges	69	15%

Institutions with less than 5 leavers are included in "Other Institutions" in the table above.

Table 12: HE Students by FE Colleges

Institution	Total	%	Institution	Total	%
Borders College	24	5%	Stevenson College	7	2%
Edinburgh's Telford College	18	4%	Other Institutions	13	3%
Jewel and Esk College	8	2%			

Institutions with less than 5 leavers are included in "Other Institutions" in the table above.

Skills Development Scotland Scottish Borders Council School Leaver Destination Report 2009-10

Table 13: FE Students by FE Colleges

Institution	Total	%	Institution	Total	%
Borders College	317	80%	Oatridge College	5	1%
Edinburgh's Telford College	37	9%	Other Colleges / Education Providers	20	5%
Stevenson College	10	3%	Out With Scotland	9	2%

Institutions with less than 5 leavers are included in "Other Institutions" in the table above.

It can be noted from tables 11, 12 & 13 that the majority of leavers who continue their studies post school, choose to attend local institutions.

Table 14: Higher Education Course Information

Course Area	Total	%	Course Area	Total	%
Arts & Social Sciences	92	21%	Teaching	17	4%
Science & Mathematics	59	13%	Art and Design	16	4%
Health & Medicine	38	9%	Performing Arts	16	4%
Administration & Management	29	6%	Languages	13	3%
Sport, Leisure & Sport Science	26	6%	Computing & ICT	12	3%
Construction	22	5%	Communications & Media	11	2%
Animals, Land & Environment	21	5%	Finance	9	2%
Engineering	20	4%	Social, Caring & Advisory Services	6	1%
Hospitality, Catering & Tourism	19	4%	Other Course Areas	3	1%
Law	18	4%			

Table 15: Further Education Course Information

Course Area	Total	%	Course Area	Total	%
Social, Caring & Advisory Services	63	16%	Garage Services	14	4%
Animals, Land & Environment	49	12%	Hospitality, Catering & Tourism	14	4%
Construction	45	11%	Administration & Management	13	3%
Hairdressing & Beauty	43	11%	Health & Medicine	11	3%
Sport, Leisure & Sport Science	41	10%	General Education (Highers, etc)	10	3%
Personal Dev. & Prep Courses	28	7%	Performing Arts	9	2%
Art and Design	24	6%	Computing & ICT	6	2%
Security & Protective Services	19	5%	Other Course Areas	9	2%

This is the 3rd year that SDS has gathered fuller data, across Scotland, about the course areas entered by school leavers. It shows that there has been no change in the course areas entered by leavers who enter higher education and the top four choices remain static. Arts and social science based subjects are the most popular followed by science and mathematics.

Within further education, the top four remain static too, with the first choice remaining Social/Caring related courses e.g. childcare or social care.

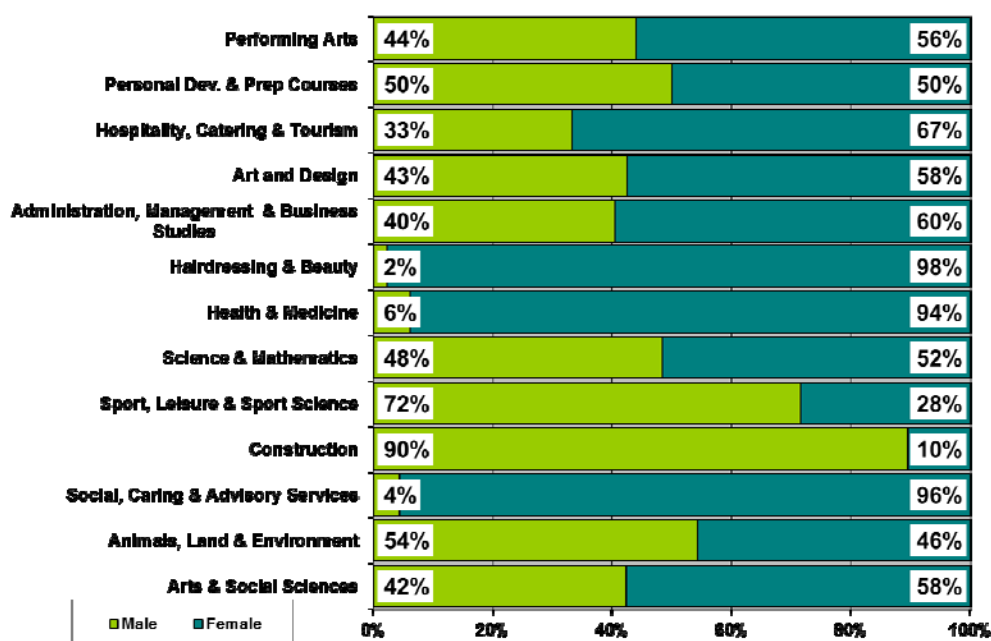
Skills Development Scotland Scottish Borders Council School Leaver Destination Report 2009-10

Table 16: Course Information by Gender

Course Area	Male		Female	
	Total	%	Total	%
Arts & Social Sciences	39	10%	53	12%
Animals, Land & Environment	38	10%	32	7%
Social, Caring & Advisory Services	*	*	66	15%
Construction	60	15%	7	2%
Sport, Leisure & Sport Science	48	12%	19	4%
Science & Mathematics	29	7%	31	7%
Health & Medicine	*	*	46	10%
Hairdressing & Beauty	*	*	43	10%
Administration & Management	17	4%	25	6%
Art and Design	17	4%	23	5%
Hospitality, Catering & Tourism	11	3%	22	5%
Personal Dev. & Prep Courses	14	4%	14	3%
Performing Arts	11	3%	14	3%
Engineering	22	6%	*	*
Law	8	2%	11	2%
Security & Protective Services	15	4%	*	*
Computing & ICT	18	5%	*	*
Teaching	*	*	15	3%
Communications & Media	9	2%	6	1%
Garage Services	14	4%	*	*
Languages	7	2%	6	1%
Finance	6	2%	*	*
General Education (Highers, etc)	5	1%	5	1%

Courses with less than 5 leavers have been suppressed

Table 17: Gender split within the course areas in both FE/HE



Construction remains the most popular choice with male leavers at **15%** with Sports, Leisure and Sport Science at **12%**. In comparison, Social and Caring related

courses remains the most popular courses with females (15%) with Arts & Social Science following at 12%.

Section 2.2: Employment

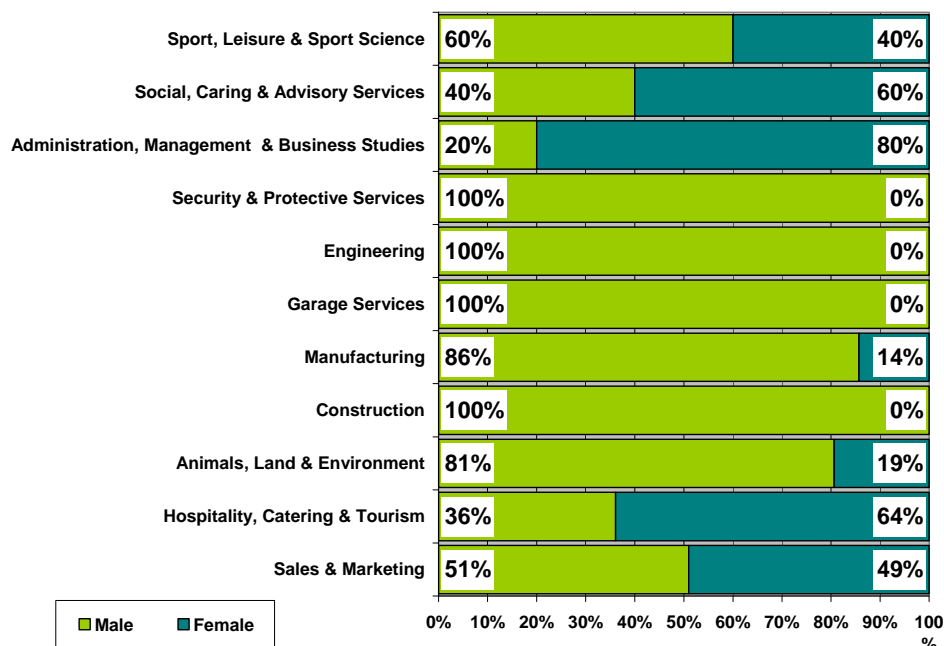
Employment: This category includes those who are employed and who are in receipt of payment from their employers. It includes young people undertaking training in employment through Skillseekers and Modern Apprenticeships. 218 young people entered Employment and analysis can be provided on 217 of those entering employment for whom we hold information about the occupational area entered.

Table 18: Those entering Employment by Occupational Area

Occupational Area	Male		Female	
	Total	%	Total	%
Sales & Marketing	26	18%	25	34%
Hospitality, Catering & Tourism	13	9%	23	31%
Animals, Land & Environment	25	17%	6	8%
Construction	25	17%	*	*
Manufacturing	12	8%	*	*
Garage Services	11	8%	*	*
Engineering	9	6%	*	*
Security & Protective Services	7	5%	*	*
Administration & Management	*	*	*	*
Social, Caring & Advisory Services	*	*	*	*

Occupational areas with less than 5 leavers have been suppressed

Table 19: Gender split within the top employment areas



The most popular area of employment entered by all school leavers continues to be Sales & Marketing which includes retail operations with 24% of those entering

employment working in this sector. The second most popular area was Hospitality, Catering and Tourism at **17%**.

The most popular occupational area of males is Sales and Marketing at **18%**, ahead of the equal Construction, and Animal, Land and Environment are the next most popular areas, both at **17%**.

Sales and Marketing which includes retail is the most popular occupational area for female leavers at **34%**, Hospitality, Catering & Tourism is the second most popular occupational area at **31%**.

Section 3: Other Destinations

School leavers who do not achieve a positive destination on leaving school are known as the MCMC group and are key customers for Skills Development Scotland and our partner organisations. The SLDR is a snapshot in time and should only be used as an indicator.

Unemployed and seeking employment or training: This category includes those who are in contact with SDS and are known by them to be seeking employment or training. This is based on regular contact between SDS and the client. This does not refer to the definition of 'unemployed' used by the Benefits Agency to calculate published unemployment rates.

Unemployed and not seeking employment or training: This category includes all those individuals who are not seeking employment or training for a range of reasons. These individual circumstances may involve sickness, prison, pregnancy, caring for children or other dependents or taking time out.

Section 3.1 Unemployed Seeking

The table provides a comparison of the percentage of unemployed seeking clients with specific characteristics as opposed to the rate of the full SLDR cohort

Table 20: Client Characteristics

Characteristics	% of Full SLDR	% of Unemployed Seeking
Gender		
Male	52%	58%
Female	48%	42%
Stage Left School		
Statutory Summer Leaver	16%	23%
Statutory Winter Leaver	9%	25%
Post Statutory Leaver	75%	52%
Qualifications on Leaving School^v		
Access 1 / No formal Qualifications	0%	0%
Access 2&3/Foundation Stand. Grade	2%	9%
General Standard Grade/ Intermediate1	17%	32%
Credit Standard Grade/ Intermediate 2	27%	31%
Highers/Advanced Higher	51%	20%
Unknown	2%	8%
Health And Additional Support Needs^{vi}		
Looked After at Home/ Looked after away from home ^{vii}	2%	9%
Additional Support Plan Recorded ^{viii}	5%	7%
Health Factor/Additional Support Need Identified ^{ix}	11%	18%

Table 20: Client Characteristics (cont)

Characteristics		% of Full SLDR	% of Unemployed Seeking
SIMD Decile Ranking /Deprivation (SIMD 2009)			
Most deprived	1	2%	7%
	2	3%	5%
	3	3%	6%
	4	6%	5%
	5	16%	19%
	6	14%	18%
	7	26%	21%
	8	21%	10%
	9	6%	8%
Least Deprived	10	3%	1%

- Male leavers account for **52%** of the leaving cohort and also for **58%** of leavers reported as unemployed seeking.
- Statutory winter leavers represent only **9%** of the whole SLDR cohort but are disproportionately represented within the leavers reported as unemployed seeking at **25%**, as are statutory summer leavers with **16%** and **23%** respectively.
- The unemployed seeking leavers who have general level standard grades account for **17%** of the total leavers in 2009 – 10, however they account for **32%** of the unemployed seeking. Leavers who have general level standard grades and below account for a disproportionate level of the unemployed seeking category.
- Leavers who had a period of being looked after at home or away from home are also disproportionately represented within the leavers reported as unemployed seeking as they represent **2%** of the total cohort but account for **9%** of the unemployed seeking cohort.

Table 21: Leavers by Intermediate Data zone

Skills Development Scotland Scottish Borders Council School Leaver Destination Report 2009-10

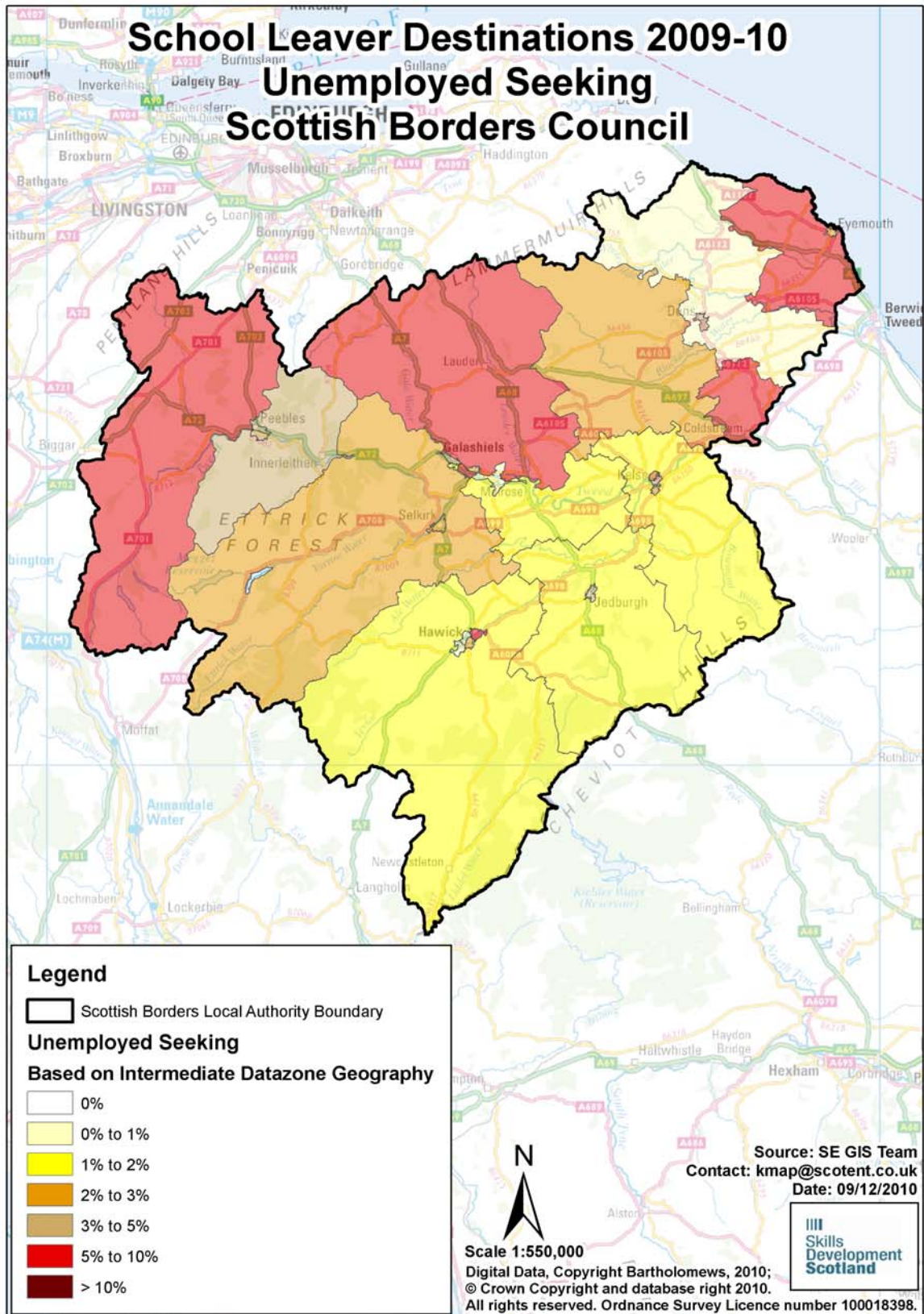
There were **115** leavers from Scottish Borders schools who were reported as unemployed seeking in the SLDR. By using postcodes, we were able to identify areas within the authority where unemployed school leavers were living. However, at the snapshot, **5** of the leavers were living outside the local authority area but a further **3** unemployed seeking school leavers from other local authority schools were residing within the local authority boundaries. The analysis below is based on **110** leavers residing in the authority and who SDS held postcode information for. The table below shows the intermediate data zones with the highest percentage of unemployed leavers.

Intermediate Data zone ^x	Total	Total Leavers %	Intermediate Data zone	Total	Total Leavers %
Burnfoot and area	10	9%	Duns	5	4%
Berwickshire East	8	7%	Galashiels North	5	4%
Earlston, Lauder and Stow area	7	6%	Jedburgh	5	4%
West Linton and Broughton area	7	6%	Langlee	5	4%
Coldstream and area	6	5%	Peebles North	5	4%
Galashiels South	6	5%			

Intermediate Data zone areas with less than 5 leavers have been suppressed

Table 22: Destinations of School Leavers: % Unemployed Seeking, 2009/10

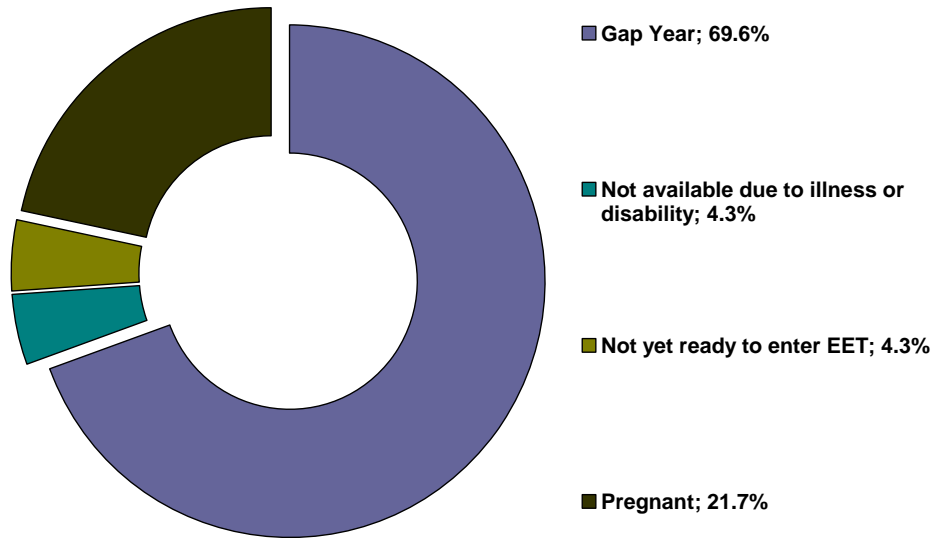
The map shows the intermediate data zones where the 110 leavers who were residing within the local authority boundary reside. Percentages have been calculated as a proportion of the number of leavers reported



Section 3.2 Unemployed NOT Seeking

There were **23** school leavers within this category.

Table 23: Individual Circumstances of those Unemployed NOT Seeking



Section 3.3 Unknown

There were **8** school leavers whose current destination was unknown at the time of SLDR.

**Skills Development Scotland Scottish Borders Council School Leaver Destination Report
2009-10**

Table 24: Destinations by School, Percentage

School	Higher Education	Further Education	Training	Employment	Voluntary Work	Unemployed Seeking	Unemployed Not Seeking	Not Known	Total Leavers	% Pos	% Other
Berwickshire High School	36.6%	29.0%	0.0%	16.8%	0.0%	14.5%	3.1%	0.0%	131	82.4%	17.6%
Earlston High School	42.7%	24.0%	3.5%	13.5%	2.3%	8.8%	5.3%	0.0%	171	86.0%	14.0%
Eyemouth High School	24.7%	28.8%	4.1%	30.1%	1.4%	8.2%	2.7%	0.0%	73	89.0%	11.0%
Galashiels Academy	36.1%	37.6%	2.6%	12.4%	1.0%	8.8%	0.5%	1.0%	194	89.7%	10.3%
Hawick High School	21.8%	42.0%	4.1%	18.7%	0.0%	10.9%	0.5%	2.1%	193	86.5%	13.5%
Jedburgh Grammar School	22.4%	43.4%	1.3%	22.4%	0.0%	7.9%	2.6%	0.0%	76	89.5%	10.5%
Kelso High School	53.7%	25.2%	1.6%	13.0%	0.0%	5.7%	0.8%	0.0%	123	93.5%	6.5%
Peebles High School	43.3%	24.9%	1.5%	19.4%	0.5%	9.0%	1.0%	0.5%	201	89.6%	10.4%
Selkirk High School	29.5%	36.4%	3.4%	21.6%	0.0%	6.8%	1.1%	1.1%	88	90.9%	9.1%
Scottish Borders Council	35.8%	32.0%	2.5%	17.4%	0.6%	9.2%	1.8%	0.6%	1250	88.3%	11.7%

Background Notes:

ⁱ **Positive Destinations:** includes higher education, further education, training, employment and voluntary work. See text above for explanation of each destination heading.

ⁱⁱ **The Scottish Index of Multiple Deprivation (SIMD):** SIMD identifies small area concentrations of multiple deprivation across all of Scotland in a consistent way. SDS uses a file created by Scottish Neighbourhood Statistics to identify SIMD based on an individual leaver's postcode. The leaver's postcode is based on the last known address of the leaver as recorded on our client management system. Where there were gaps in the data held on our CMS, the last known address supplied in the annual import of pupil details has been used. As the last known postcode is used it may be that a leaver from one local authority was living in another local authority at the time of the return. Therefore, the SIMD relates to where a leaver was living and not the concentration of SIMD within a local authority.

ⁱⁱⁱ **Stage of Leaving:** A **statutory summer leaver** is a school leaver who chooses to leave school at the earliest opportunity (31st May) when they become eligible to leave school i.e. their 16th birthday falls on or between 1st March and 30th September in their year of leaving. A **statutory winter leaver** is a school leaver who chooses to leave school at the earliest opportunity when they become eligible to leave school i.e. their 16th birthday falls between 1st October and the last day in February. A **post statutory leaver** is a school leaver who chose to remain at school past their statutory leave date e.g. a winter leaver who would have been eligible to leave at the winter leave date but choose to remain at school until the summer leave date. Included in this group are leavers who have past their statutory leave date and have left school at any stage throughout the year.

^{iv} **Institutions:** through our follow up of leavers, we confirm Further and Higher Education destinations and as part of the process we request further information about the institution a leaver is attending. This is not a requirement of the Scottish Government and the information displayed is based on the recorded detail on Insight, the SDS

^v **Qualifications on leaving school:** This information is based on pre-appeal information from the Scottish Qualifications Agency where SDS received information about a leaver's qualifications and a robust match of records was made. Where no match was made the qualification level has been gathered through our interaction with individuals.

^{vi} **Qualifications on leaving school:** This information is based on pre-appeal information from the Scottish Qualifications Agency where SDS received information about a leaver's qualifications and a robust match of records was made. Where no match was made the qualification level has been gathered through our interaction with individuals.

^{vii} **Looked After at Home/ Looked after away from home:** This refers to recent school leavers that SDS has recorded information that they had an episode of being looked after at home or looked after away from home. This information is gathered in a variety of ways including local SDS contact with Social Work departments, data received through the school import process or via direct contact with individuals. It is recognised that this information may not be complete when compared with similar data from social work services departments. However SDS is working with the Scottish Government and local authorities to look at improving the sharing of information in respect of these young people therefore the figures used are indicative.

^{viii} **Additional Support Plan Recorded:** SDS receives data from all local authority schools and school centres with pupils in stages S1-S6 or special schools to import into our client management system. We receive information about those who have co-ordinated support plans (CSP) and individualised educational programmes. We also gather information directly from individuals and via our ongoing work with schools. We acknowledge that the data may vary from that held by local authorities therefore the figures used are indicative.

^{ix} **Health Factor/Additional Support Need Identified:** SDS receives data from all local authority schools and school centres with pupils in stages S1-S6 or special schools to import into our client management system. We receive information about those who have identified additional support needs. We also gather information directly from individuals and via our ongoing work with schools. We acknowledge that the data may vary from that held by local authorities therefore the figures used are indicative.

^x **Intermediate Data zone Geography:** The data zone is the key small area statistical geography in Scotland. The intermediate geography is built up from data zones and can be used to disseminate statistics that are not suitable for release at the data zone level. Due to the small number of individuals it has been decided to use the intermediate level geography. There are 1235 intermediate zones in Scotland, containing on average 4000 household residents and these have been designed to respect local authority boundaries as at 2001 Census.