

# **School Leaver Destination Report**

**2009 – 2010**

**Renfrewshire Council**

## Contents

<b>Section 1: Overview – Main Findings</b> .....	<b>3</b>
Table 1: Destination Totals.....	4
Table 2: Local Authority Comparison to Scotland.....	5
<b>Section 1.1 - Annual Trends</b> .....	<b>5</b>
Table 3: Trends 2000 – 2010 of Positive Destinations.....	5
Table 4: Trends 2000 – 2010 of Other Destinations.....	5
Table 5: Destinations from 2000 to 2010.....	6
<b>Section 1.2: Client Characteristics</b> .....	<b>6</b>
Table 6: Destination split by Gender.....	6
Table 7: Gender split within each destination.....	7
Table 8: Destination by SIMD.....	8
Table 9: Destination by Stage Left School. ....	9
<b>Section 2: Positive Destinations</b> .....	<b>9</b>
<b>Section 2.1 Higher and Further Education</b> .....	<b>9</b>
Table 10: HE Entrants by Institution Type.....	9
Table 11: HE Students by Institution.....	10
Table 12: HE Students by FE Colleges .....	10
Table 13: FE Students by FE Colleges.....	10
Table 14: Higher Education Course Information.....	10
Table 15: Further Education Course Information .....	11
Table 16: Course Information by Gender.....	11
Table 17: Gender split within the course areas in both FE/HE.....	12
<b>Section 2.2: Employment</b> .....	<b>12</b>
Table 18: Those entering Employment by Occupational Area.....	12
Table 19: Gender split within the top employment areas .....	13
<b>Section 3: Other Destinations</b> .....	<b>14</b>
<b>Section 3.1 Unemployed Seeking</b> .....	<b>14</b>
Table 20: Client Characteristics.....	14
Table 21: Leavers by Intermediate Data zone .....	15
Table 22: Destinations of School Leavers: % Unemployed Seeking, 2009/10.....	16
<b>Section 3.2 Unemployed NOT Seeking</b> .....	<b>16</b>
<b>Section 3.2 Unemployed NOT Seeking</b> .....	<b>17</b>
Table 23: Individual Circumstances of those Unemployed NOT Seeking.....	17
<b>Section 3.3 Unknown</b> .....	<b>17</b>
Table 24: Destinations by School, Percentage .....	18
Background Notes: .....	19

## Background

The School Leaver Destination Return (SLDR) is a statistical return undertaken by Skills Development Scotland (SDS) on behalf of the Scottish Government. The Return is based on a follow up of young people who left school between the 1st of August 2009 and the 31st of July 2010. This exercise was carried out during the month of September 2010.

The Scottish Government use the data produced from the Return to report against the National Indicator and target, “increase the proportion of school leavers (from Scottish publicly funded schools) in positive and sustained destinations (FE, HE, employment or training)”. Partners, particularly Local Authorities, use the data to inform initiatives developed as part of the More Choices More Chances Strategy, to evidence the success of initiatives, measure progress against targets, and to identify areas to target resources to improve the post school outcomes for young people.

## Methodology

The return is carried out during the month of September with staff across Skills Development Scotland following up over 55,000 school leavers. Destinations are confirmed throughout the follow up period and the destination that is reported is the destination that is known at the snapshot date. This year, we reported the information as known to us on 2nd October 2010. Destinations of young people are fluid in nature, therefore, it is possible that a leaver entered employment or training on leaving school but by the time the snapshot was taken this destination may have changed to another destination.

The information that is gathered is recorded within the SDS CMS system (Insight) which enables us to produce MIS reports and populate the data fields to be sent to the Government. This data is transferred at an individual level and undergoes a matching & validation process until a cohort is agreed. This allows the government’s analytical services unit to match the client’s individual outcome with other indicators such as social economic background, additional support needs and stage of leaving, etc. All information in this report, however, is based upon data held within the SDS Insight database which has been analysed to produce the graphs and tables contained within this report.

## Analysis

Only leavers from publicly funded secondary schools are within the scope of the SLDR. This report relates to **1,886** leavers from publicly funded secondary schools. This relates to approximately a **5%** decrease in the number of leavers reported this year in comparison to the SLDR in 2008-09.

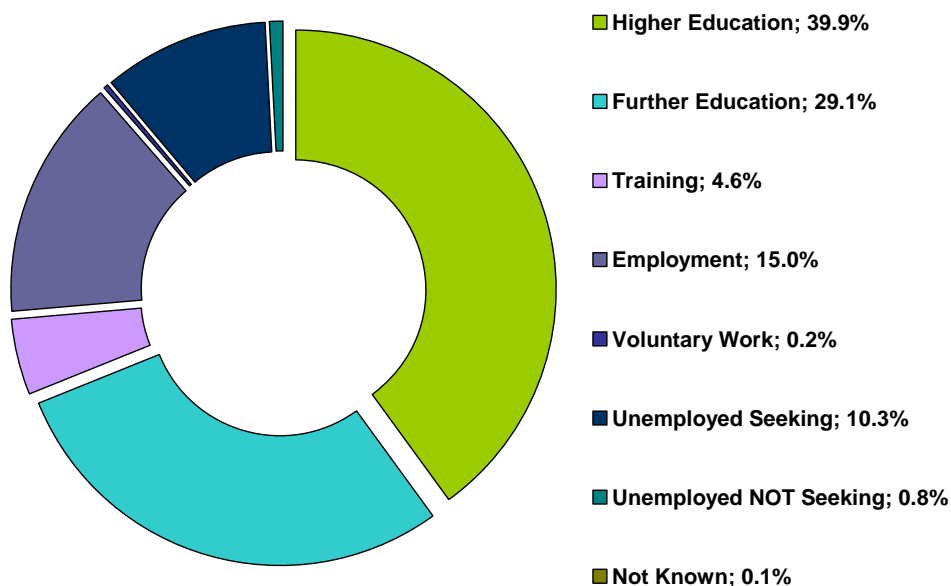
## Section 1: Overview – Main Findings

- Overall the percentage of leavers entering a positive destination<sup>i</sup> is **88.8%**, a rise of **4%** on last year. This rise was the fourth highest in Scotland, which has resulted in the authority moving from the 21<sup>st</sup> highest proportion of positive destinations to the 9<sup>th</sup>.
- The proportion of leavers entering further and higher education witnessed an increase this year to **69%**, a rise of **6%** compared to last year. The percentage of leavers entering higher education has increased by **3.3%** in comparison to last year to **39.9%**, which now places Renfrewshire as the authority with the fourth highest proportion of leavers entering higher education.
- The percentage of leavers entering further education has also increased since last year to **29.1%** which is just over **2%** higher than the Scottish average.

## Skills Development Scotland Renfrewshire Council School Leaver Destination Report 2009-10

- The percentage of leavers entering employment has fallen since last year from **16.4%** to **15%**, which is almost 50% lower than 2004-05. The percentage entering training has also decreased by **0.7%** from last year to **4.6%**.
- The percentage of leavers who are unemployed seeking has increased very slightly to **10.3%** from **10.1%**, which is still around **1%** lower than the national average.
- School leavers whose destination is unknown to SDS has fallen to its lowest recorded level at **0.1%**.

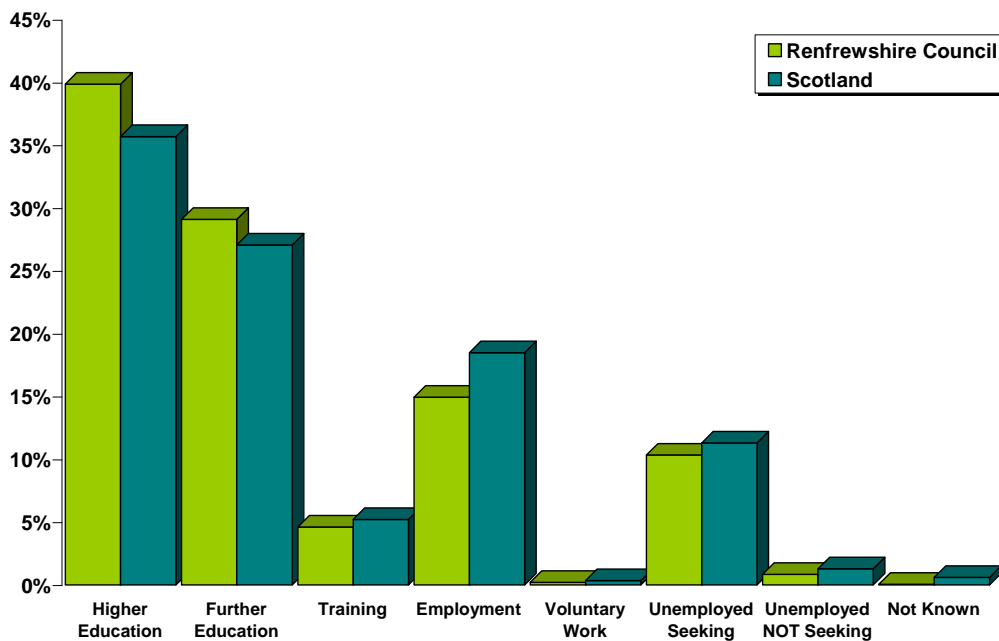
**Table 1: Destination Totals**



Area	Total Leavers	Higher Education	Further Education	Training	Employment	Voluntary Work	Unemployed Seeking	Unemployed NOT Seeking	Not Known
Renfrewshire	<b>1,886</b>	<b>39.9%</b> 752	<b>29.1%</b> 549	<b>4.6%</b> 87	<b>15.0%</b> 282	<b>0.2%</b> 4	<b>10.3%</b> 195	<b>0.8%</b> 16	<b>0.1%</b> 1
Scotland	<b>54,097</b>	<b>35.7%</b> 19,309	<b>27.1%</b> 14,637	<b>5.2%</b> 2,822	<b>18.5%</b> 10,005	<b>0.3%</b> 187	<b>11.3%</b> 6,117	<b>1.3%</b> 696	<b>0.6%</b> 324

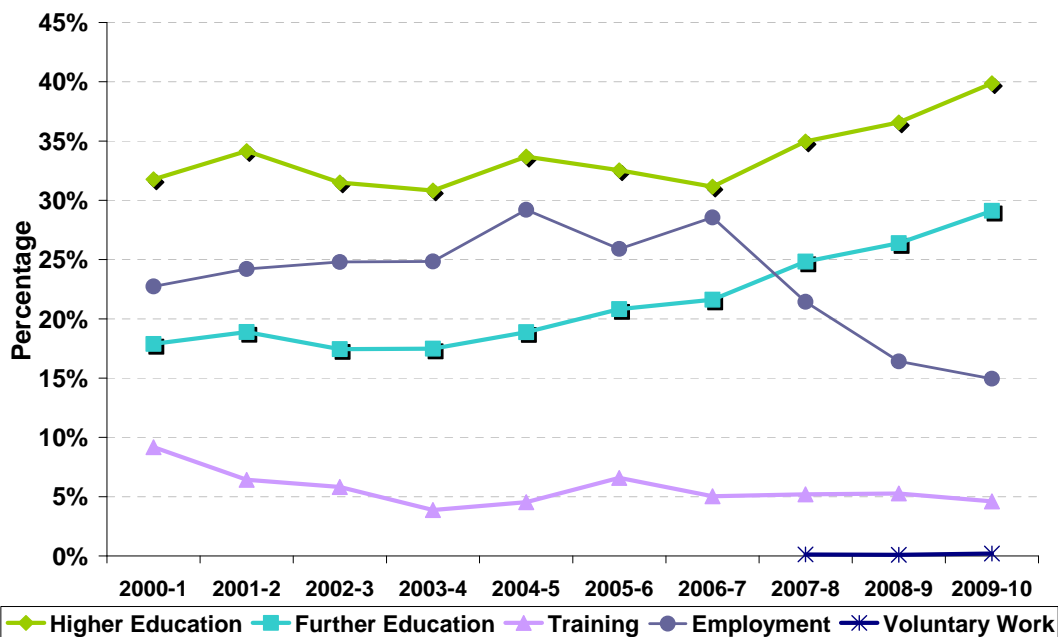
# Skills Development Scotland Renfrewshire Council School Leaver Destination Report 2009-10

**Table 2: Local Authority Comparison to Scotland**



## Section 1.1 - Annual Trends

**Table 3: Trends 2000 – 2010 of Positive Destinations**

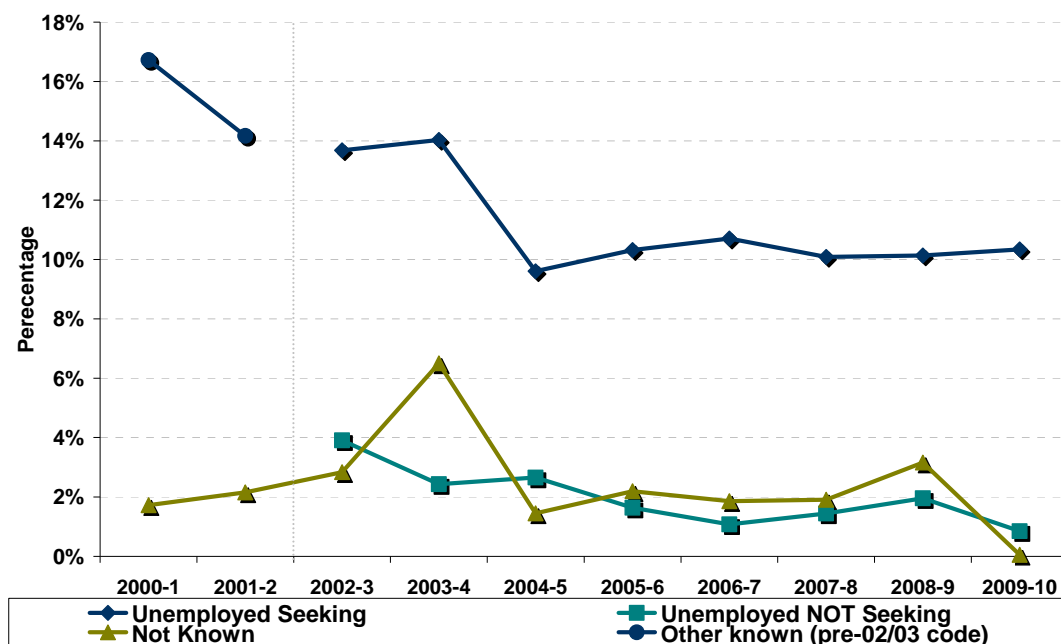


Note: Voluntary Work has been included as a separate destination category since the 2007-08 SLDR return but was reported within the unemployed not seeking category previously.

Since 2006-07, the percentage of leavers entering Higher Education has risen year on year and is now just over **8%** than 10 years ago. The proportion of leavers entering further education has also been rising year on year since 2002-03 and this is also at its highest level in a decade, over **11%** higher than in 2000-01. In comparison, there has been a dramatic fall in the percentage of leavers entering employment since 2006-07 from **28.6%** to **15%**.

**Table 4: Trends 2000 – 2010 of Other Destinations**

## Skills Development Scotland Renfrewshire Council School Leaver Destination Report 2009-10



The proportion of leavers reported as unemployed seeking dropped dramatically in 2004-5 to **9.6%** but has been reported at over **10%** since 2005-06 and now sits at **10.3%**. The percentage of leavers unknown rose in 2008-09 (**3.2%**) to the highest level since 2003-04 (**6.5%**) but this year it has dropped to the lowest level ever at **0.1%**.

**Table 5: Destinations from 2000 to 2010**

Year	Total Leavers	Higher Education	Further Education	Training	Employment	Voluntary Work	Unemployed Seeking	Unemployed NOT Seeking	Not Known	Other Known
2000-1	2,147	31.8%	17.9%	9.2%	22.7%				1.7%	16.7%
2001-2	2,181	34.2%	18.9%	6.4%	24.2%				2.2%	14.2%
2002-3	2,149	31.5%	17.4%	5.8%	24.8%		13.7%	3.9%	2.8%	
2003-4	2,138	30.8%	17.5%	3.9%	24.8%		14.0%	2.4%	6.5%	
2004-5	2,072	33.7%	18.9%	4.5%	29.2%		9.6%	2.7%	1.4%	
2005-6	2,142	32.5%	20.8%	6.6%	25.9%		10.3%	1.6%	2.2%	
2006-7	2,045	31.1%	21.6%	5.0%	28.6%		10.7%	1.1%	1.9%	
2007-8	2,151	35.0%	24.8%	5.2%	21.4%	0.1%	10.1%	1.4%	1.9%	
2008-9	1,993	36.6%	26.4%	5.3%	16.4%	0.1%	10.1%	2.0%	3.2%	
2009-10	1,886	39.9%	29.1%	4.6%	15.0%	0.2%	10.3%	0.8%	0.1%	

**Note:** Prior to 2002-03 both the unemployed seeking and unemployed not seeking categories were reported in a separate category called Other Known. This is reflected in the table and graph above.

### Section 1.2: Client Characteristics

**Table 6: Destination split by Gender**

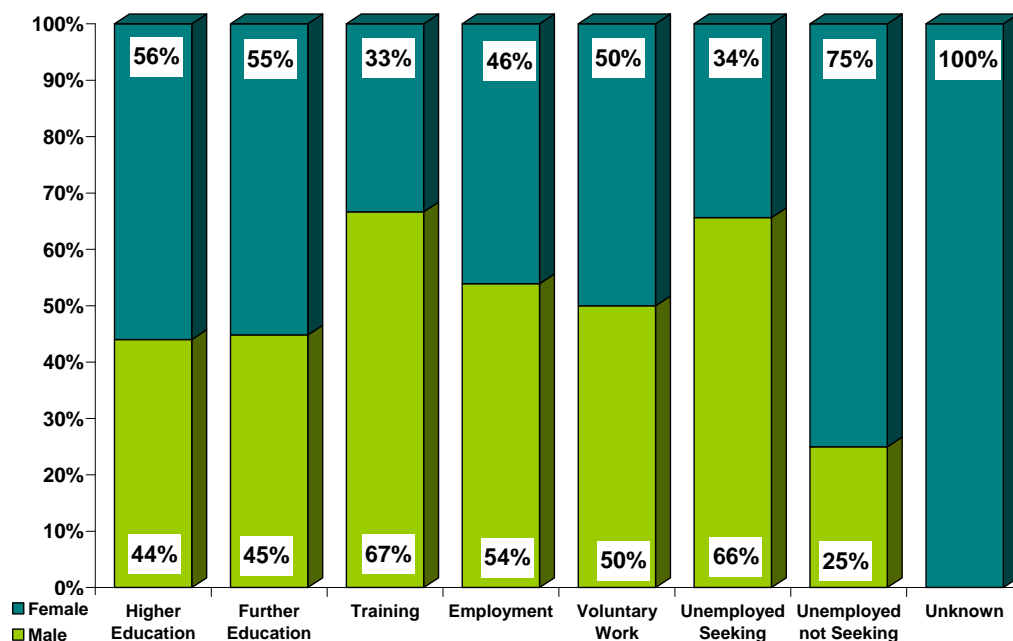
## Skills Development Scotland Renfrewshire Council School Leaver Destination Report 2009-10



Year	Total Leavers	Higher Education	Further Education	Training	Employment	Voluntary Work	Unemployed Seeking	Unemployed NOT Seeking	Not Known
Male	<b>921</b>	35.9%	26.7%	6.3%	16.5%	0.2%	13.9%	0.4%	0.0%
Female	<b>965</b>	43.6%	31.4%	3.0%	13.5%	0.2%	6.9%	1.2%	0.1%

Female leavers (**91.7%**) are more likely than male leavers (**85.7%**) to enter positive destinations on leaving school. The proportion of female leavers who continue their education in either higher or further education is **12.4%** higher than that for males, **75%** compared to **62.6%**. The percentage of males entering employment and training (**22.8%**) is **6.3%** higher than that for females (**16.5%**). Males are more likely to become unemployed and seeking than females with over **66%** of leavers reported as unemployed seeking being male.

**Table 7: Gender split within each destination**



**Skills Development Scotland Renfrewshire Council School Leaver Destination Report  
2009-10**

**Table 8: Destination by SIMD**

<b>SIMD Decile</b>	<b>Most Deprived → Least Deprived</b>										<b>Unknown</b>
	<b>1</b>	<b>2</b>	<b>3</b>	<b>4</b>	<b>5</b>	<b>6</b>	<b>7</b>	<b>8</b>	<b>9</b>	<b>10</b>	
Higher Education	25%	23%	28%	28%	39%	46%	44%	53%	52%	69%	0%
Further Education	34%	40%	31%	40%	36%	21%	23%	20%	25%	15%	33%
Training	10%	6%	6%	7%	4%	6%	4%	0%	1%	1%	33%
Employment	10%	13%	16%	13%	13%	13%	19%	21%	20%	13%	33%
Voluntary Work	*	*	*	*	*	*	*	*	*	*	*
Unemployed Seeking	17%	17%	19%	9%	7%	13%	6%	7%	3%	2%	0%
U/E Not Seeking	3%	*	*	*	*	*	*	*	*	*	*
Unknown	*	*	*	*	*	*	*	*	*	*	*
<b>Positive Destinations</b>	<b>80%</b>	<b>83%</b>	<b>80%</b>	<b>89%</b>	<b>91%</b>	<b>86%</b>	<b>92%</b>	<b>93%</b>	<b>97%</b>	<b>98%</b>	<b>100%</b>
<b>Total</b>	<b>258</b>	<b>235</b>	<b>167</b>	<b>141</b>	<b>196</b>	<b>143</b>	<b>144</b>	<b>138</b>	<b>292</b>	<b>169</b>	<b>3</b>
<b>% of Total Leavers</b>	<b>14%</b>	<b>12%</b>	<b>9%</b>	<b>7%</b>	<b>10%</b>	<b>8%</b>	<b>8%</b>	<b>7%</b>	<b>15%</b>	<b>9%</b>	<b>0%</b>

Percentages based on 5 or less have been suppressed due to disclosure reasons.

- In general, leavers who live in the least deprived areas are more likely to enter positive destinations on leaving school than those from the most deprived area. For example, there are a similar percentage of leavers from SIMD 9 and SIMD 1 but their outcomes are different. There is a 17% difference in the proportion entering positive outcomes with 97% of those in SIMD 9 entering positive destinations compared to 80% in SIMD 1.
- Leavers who live in the least deprived areas are more likely to enter Higher Education in comparison to leavers who live in the most deprived areas. The proportion leavers entering higher education from the least deprived area (**69%**) which is more than double the proportion for leavers from the most deprived area (**25%**)
- Leavers from most deprived areas are more likely to be unemployed seeking than leavers from the least deprived areas. Using the example of SIMD 1 and SIMD 9, as above, there were **17%** of leavers reported as unemployed seeking from SIMD 1 in comparison to **3%** in SIMD 9.

**Table 9: Destination by Stage Left School.**

<b>Stage of Leaving<sup>iii</sup> Destination</b>	<b>Statutory Summer Leaver</b>	<b>Statutory Winter Leaver</b>	<b>Post Statutory Leaver</b>
Higher Education	0%	2%	52%
Further Education	48%	34%	25%
Training	17%	8%	2%
Employment	14%	25%	14%
Voluntary Work	0%	0%	0%
Unemployed Seeking	20%	30%	6%
Unemployed Not Seeking	1%	2%	1%
Unknown	0%	0%	0%
<b>Positive Destinations</b>	<b>80%</b>	<b>69%</b>	<b>93%</b>
<b>Total Leavers</b>	250	197	1,439
<b>% of Total Leavers</b>	<b>13%</b>	<b>10%</b>	<b>76%</b>

- It can be noted that the majority of school pupils choose to remain at school past their statutory leave date and this has an impact on their positive progression from school. Leavers who stay on past their statutory leave date are more likely to progress to positive outcomes on leaving school with the majority entering higher education.
- Although they are in the minority, statutory winter leavers are less likely to enter positive destinations than other leavers. The highest proportion of winter leavers are reported as being in further education. They **(30%)** are around five times more likely to be reported as unemployed seeking than a post statutory leaver **(6%)**.
- The highest proportion of statutory summer leavers enter further education with unemployed seeking being the 2<sup>nd</sup> highest proportion.

## **Section 2: Positive Destinations**

### **Section 2.1 Higher and Further Education**

**Higher Education (HE):** This category includes leavers following HND (Higher National Diploma) or HNC (Higher National Certificate) courses, degree courses, courses for the education and training of teachers and higher level courses for professional qualifications. **16** young people with a deferred, unconditional place in higher education for next year have also been included in this year's figures.

**Further Education (FE):** This category includes leavers undertaking non advanced further education which is not higher education.

From those reported in the SLDR, **752** leavers entered Higher Education and **549** entered Further Education. Detailed analysis can be provided on **99.2% (1,291)** of this cohort for whom we hold information on institution and course chosen – Higher Education **99.6% (749)** & Further Education **98.6% (542)**.

**Table 10: HE Entrants by Institution Type**

<b>Institution Type</b>	<b>Total</b>	<b>%</b>
University / HE College	495	66%
FE College	247	33%
Other <sup>1</sup>	7	1%

<sup>1</sup> Other Category includes institutions out with Scotland and other private institutions

## Skills Development Scotland Renfrewshire Council School Leaver Destination Report 2009-10

**Table 11: HE Students by Institution**

Institution <sup>iv</sup>	Total	%	Institution	Total	%
West of Scotland University	140	19%	Aberdeen University	12	2%
Strathclyde University	97	13%	Heriot Watt University	7	1%
Glasgow University	91	12%	St Andrews University	7	1%
Glasgow Caledonian University	73	10%	Abertay University Dundee	5	1%
Stirling University	15	2%	Outwith Scotland	6	1%
Dundee University	14	2%	FE Colleges	247	33%
Edinburgh University	13	2%	Other Institutions	22	3%

Institutions with less than 5 leavers are included in "Other Institutions" in the table above.

**Table 12: HE Students by FE Colleges**

Institution	Total	%	Institution	Total	%
Reid Kerr College	75	10%	Glasgow Metropolitan College	22	3%
James Watt College	67	9%	Stow College	11	1%
Cardonald College	26	3%	Glasgow College of Nautical Studies	9	1%
Central College of Commerce	24	3%	Other Institutions	14	2%

Institutions with less than 5 leavers are included in "Other Institutions" in the table above.

**Table 13: FE Students by FE Colleges**

Institution	Total	%	Institution	Total	%
Reid Kerr College	268	49%	Langside College	12	2%
James Watt College	119	22%	Annie'sland College	7	1%
Cardonald College	77	14%	Stow College	7	1%
Glasgow Metropolitan College	21	4%	Clydebank College	6	1%
Central College of Commerce	14	3%	Other Institutions	11	2%

Institutions with less than 5 leavers are included in "Other Institutions" in the table above.

It can be noted from tables 11, 12 & 13 that the majority of leavers who continue their studies post school, choose to attend local institutions.

**Table 14: Higher Education Course Information**

Course Area	Total	%	Course Area	Total	%
Arts & Social Sciences	99	13%	Hospitality, Catering & Tourism	28	4%
Science & Mathematics	86	11%	Law	26	3%
Engineering	62	8%	Finance	25	3%
Health & Medicine	61	8%	Social, Caring & Advisory Services	15	2%
Sport, Leisure & Sport Science	56	7%	Communications & Media	14	2%
Administration & Management	53	7%	Sales & Marketing	14	2%
Computing & ICT	47	6%	Languages	11	1%
Performing Arts	43	6%	Hairdressing & Beauty	5	1%
Art and Design	37	5%	Security & Protective Services	5	1%
Construction	29	4%	Other course areas	4	*
Teaching	29	4%			

## Skills Development Scotland Renfrewshire Council School Leaver Destination Report 2009-10

**Table 15: Further Education Course Information**

Course Area	Total	%	Course Area	Total	%
Social, Caring & Advisory Services	81	15%	Communications & Media	22	4%
Construction	64	12%	Administration & Management	18	3%
Hairdressing & Beauty	48	9%	Computing & ICT	14	3%
Art and Design	46	8%	Health & Medicine	14	3%
General Education (Highers, etc)	39	7%	Security & Protective Services	12	2%
Hospitality, Catering & Tourism	32	6%	Garage Services	11	2%
Performing Arts	32	6%	Finance	8	1%
Sport, Leisure & Sport Science	32	6%	Animals, Land & Environment	6	1%
Engineering	26	5%	Science & Mathematics	6	1%
ASN Courses	23	4%	Other course areas	8	1%

This is the 3<sup>rd</sup> year that SDS has gathered fuller data, across Scotland, about the course areas entered by school leavers. It shows that there has been no change in the course areas entered by leavers who enter higher education and the top four choices remain static. Arts and social science based subjects are the most popular followed by science and mathematics.

Within further education, the first choice remains Social/Caring related courses e.g. childcare or social care. The percentage of leavers studying in these subjects has increased by around **3%** this year from **12%** to **15%**. The percentage of leavers entering construction related courses have also risen by around **3%** from **9%** to **12%** whereas hairdressing and beauty have remained relatively static at **9%**.

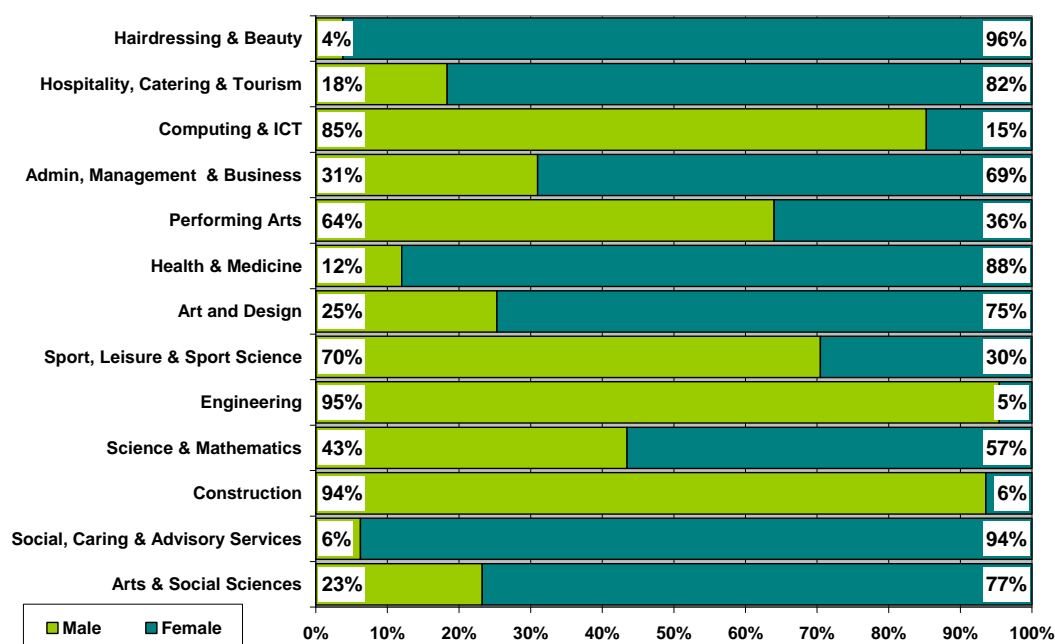
**Table 16: Course Information by Gender**

Course Area	Male		Female	
	Total	%	Total	%
Arts & Social Sciences	23	4%	76	11%
Social, Caring & Advisory Services	6	1%	90	13%
Construction	87	15%	6	1%
Science & Mathematics	40	7%	52	7%
Engineering	84	15%	*	*
Sport, Leisure & Sport Science	62	11%	26	4%
Art and Design	21	4%	62	9%
Health & Medicine	9	2%	66	9%
Performing Arts	48	8%	27	4%
Administration & Management	22	4%	49	7%
Computing & ICT	52	9%	9	1%
Hospitality, Catering & Tourism	11	2%	49	7%
Hairdressing & Beauty	*	*	51	7%
General Education (Highers, etc)	12	2%	27	4%
Communications & Media	18	3%	18	3%
Finance	16	3%	17	2%
Teaching	5	1%	24	3%
Law	14	2%	14	2%
Personal Dev & Prep Courses	14	2%	9	1%
Sales & Marketing	*	*	14	2%
Security & Protective Services	8	1%	9	1%
Garage Services	10	2%	*	*
Languages	*	*	10	1%
Animals, Land & Environment	*	*	5	1%

Courses with less than 5 leavers have been suppressed

## Skills Development Scotland Renfrewshire Council School Leaver Destination Report 2009-10

**Table 17: Gender split within the course areas in both FE/HE**



There has been a slight change this year in comparison to last year with construction replacing engineering as the most popular course area for male leavers. The percentage of male leavers entering construction related course rose from 11% in 2008-09 to 15%, this year. In comparison, social and caring related courses have replaced art & design as the most popular course area for female leavers. The percentage of female leavers entering social/caring related course has risen by 3% from 10% in 2008-09 to 13% in 2009-10. The most popular area for all leavers is arts and social science with just of ¼ of entrants being female. Subjects in engineering and construction remain male dominated whereas social/caring and hairdressing related courses are female dominated.

### Section 2.2: Employment

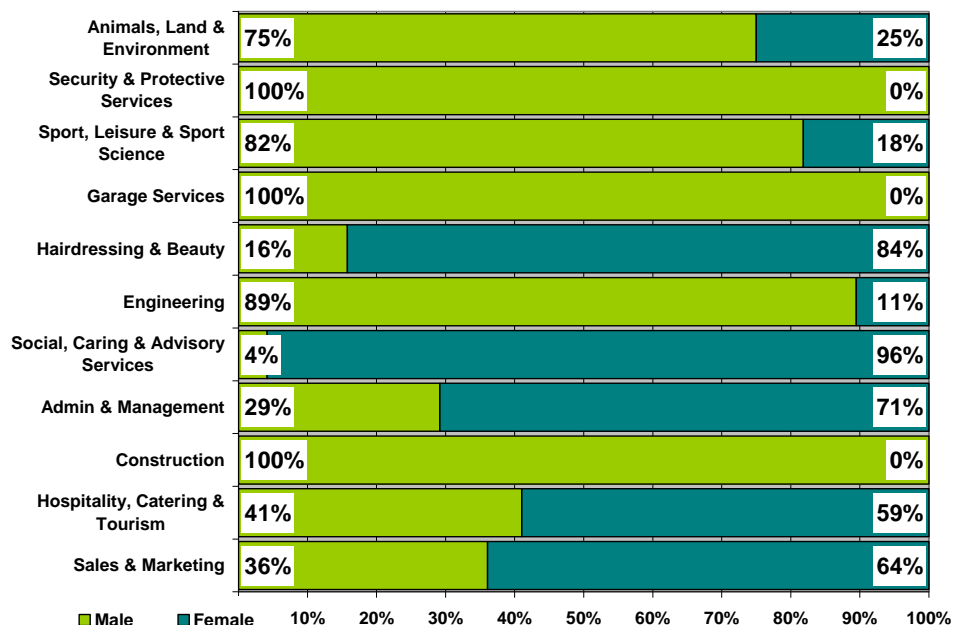
**Employment:** This category includes those who are employed and who are in receipt of payment from their employers. It includes young people undertaking training in employment through Skillseekers and Modern Apprenticeships. 282 young people entered Employment and analysis can be provided on all of those entering employment for whom we hold information about the occupational area entered.

**Table 18: Those entering Employment by Occupational Area**

Occupational Area	Male		Female	
	Total	%	Total	%
Sales & Marketing	22	15%	39	31%
Hospitality, Catering & Tourism	16	11%	23	18%
Construction	35	23%	*	*
Administration & Management	7	5%	17	13%
Social, Caring & Advisory Services	*	*	23	18%
Engineering	17	11%	*	*
Hairdressing & Beauty	*	*	16	12.6%
Garage Services	17	11%	*	*
Sport, Leisure & Sport Science	9	6%	*	*
Security & Protective Services	5	3%	*	*

Occupational areas with less than 5 leavers have been suppressed

Table 19: Gender split within the top employment areas



The most popular area of employment entered by all school leavers continues to be sales & marketing which includes retail operations with **22%** of those entering employment working in this sector. The second most popular area is hospitality and catering with just over 14% of leavers entering this occupational area. This is a slight rise of **3%** in comparison to last year.

The majority of males continue to enter construction related jobs with **23%** of male leavers gaining employment in this occupational area which is a drop of **4%** when compared last year's levels (**27%**). The percentage of male leavers entering engineering (**11%**) is the same as 2008-09 and the percentage in garage related jobs has risen slightly this year by **2%** from **9%** in 2008-09 to **11%** in 2009-10. These occupational sectors remain mainly male orientated.

The 3 most popular occupational areas for female leavers are sales & marketing which includes retail operations (**31%**), hospitality, catering & tourism (**18%**) and social/caring occupations (**18%**). However, the percentage of female leavers entering social/caring occupations has dropped by **6%** in comparison to last year and this remains, like hairdressing, a female orientated occupation.

## Section 3: Other Destinations

School leavers who do not achieve a positive destination on leaving school are known as the MCMC group and are key customers for Skills Development Scotland and our partner organisations. The SLDR is a snapshot in time and should only be used as an indicator.

**Unemployed and seeking employment or training:** This category includes those who are in contact with SDS and are known by them to be seeking employment or training. This is based on regular contact between SDS and the client. This does not refer to the definition of 'unemployed' used by the Benefits Agency to calculate published unemployment rates. In 2009-10 it also included those individuals undertaking personal skills development<sup>v</sup> (28 leavers or 14% of unemployed seeking)

**Unemployed and not seeking employment or training:** This category includes all those individuals who are not seeking employment or training for a range of reasons. These individual circumstances may involve sickness, prison, pregnancy, caring for children or other dependents or taking time out.

### Section 3.1 Unemployed Seeking

The table provides a comparison of the percentage of unemployed seeking clients with specific characteristics as opposed to the rate of the full SLDR cohort

**Table 20: Client Characteristics**

Characteristics	% of Full SLDR	% of Unemployed Seeking
<b>Gender</b>		
Male	49%	66%
Female	51%	34%
<b>Stage Left School</b>		
Statutory Summer Leaver	13%	25%
Statutory Winter Leaver	10%	30%
Post Statutory Leaver	76%	45%
<b>Qualifications on Leaving School<sup>vi</sup></b>		
Access 1 / No formal Qualifications	0%	1%
Access 2&3/Foundation Stand. Grade	2%	5%
General Standard Grade/ Intermediate 1	16%	36%
Credit Standard Grade/ Intermediate 2	28%	30%
Highers/Advanced Higher	52%	16%
Unknown	2%	13%
<b>Health And Additional Support Needs<sup>vii</sup></b>		
Looked After at Home/ Looked after away from home <sup>viii</sup>	3%	9%
Additional Support Plan Recorded <sup>ix</sup>	4%	10%
Health Factor/Additional Support Need Identified <sup>x</sup>	7%	15%

**Skills Development Scotland Renfrewshire Council School Leaver Destination Report  
2009-10**

**Table 20: Client Characteristics (cont)**

Characteristics		% of Full SLDR	% of Unemployed Seeking
<b>SIMD Decile Ranking /Deprivation (SIMD 2009)</b>			
<b>Most deprived</b>	1	14%	23%
	2	12%	21%
	3	9%	16%
	4	7%	7%
	5	10%	7%
	6	8%	10%
	7	8%	5%
	8	7%	5%
	9	15%	5%
<b>Least Deprived</b>	10	9%	2%
	Unknown	0%	0%

- Although male leavers account for only 49% of the leaving cohort they account for almost 66% of leavers reported as unemployed seeking.
- Statutory winter leavers represent only **10%** of the whole SLDR cohort but are disproportionately represented within the leavers reported as unemployed seeking at **30%**, as are statutory summer leavers with **13%** and **25%** respectively.
- The largest proportion of unemployed seeking leavers have general level standard grades and those with this level or below are disproportionately represented in the unemployed seeking cohort.
- Leavers who had a period of being looked after at home or away from home are also disproportionately represented within the leavers reported as unemployed seeking as they represent **3%** of the total cohort but account **9%** of the unemployed seeking cohort.

**Table 21: Leavers by Intermediate Data zone**

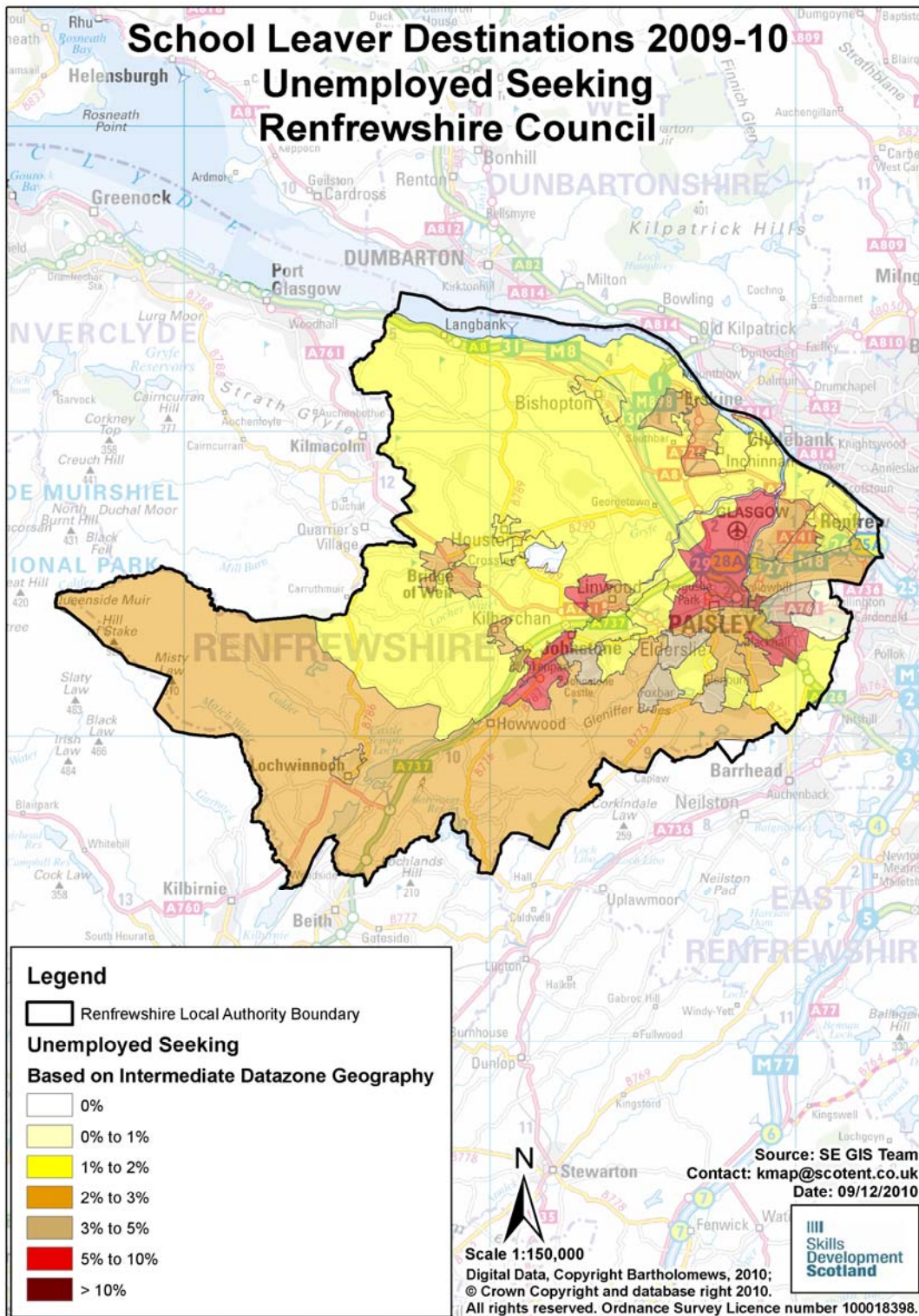
There were **195** leavers from Renfrewshire schools who were reported as unemployed seeking in the SLDR. By using postcodes, we were able to identify areas within the authority where unemployed school leavers were living. However, at the snapshot, **10** of the leavers were living outside the local authority area but a further **7** unemployed seeking school leavers from other local authority schools were residing within the local authority boundaries. The analysis below is based on **192** leavers residing in the authority and who SDS held postcode information for. The table below shows the intermediate data zones with the highest percentage of unemployed leavers.

Intermediate Data zone <sup>xi</sup>	Total	%	Intermediate Data zone	Total	%
Johnstone North West	11	6%	Paisley Glenburn West	8	4%
Johnstone South West	11	6%	Paisley West	8	4%
Linwood North	11	6%	Johnstone South East	7	4%
Paisley East	11	6%	Paisley North East	7	4%
Paisley North	11	6%	Paisley Foxbar	6	3%
Paisley Ferguslie	10	5%	Erskine West	5	3%

Intermediate Data zone areas with less than 5 leavers have been suppressed

**Table 22: Destinations of School Leavers: % Unemployed Seeking, 2009/10**

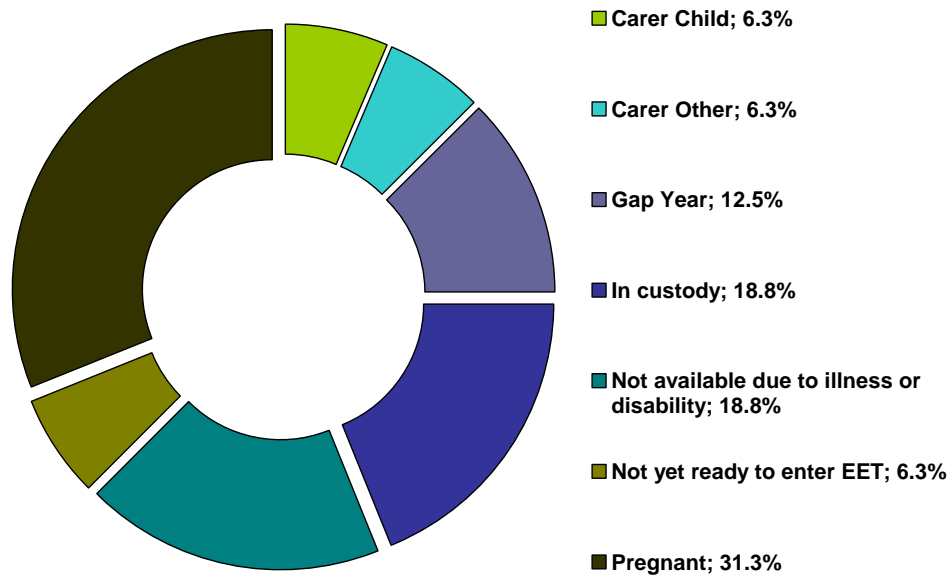
The map shows the intermediate data zones where the 192 leavers who were residing within the local authority boundary reside. Percentages have been calculated as a proportion of the number of leavers reported



### Section 3.2 Unemployed NOT Seeking

There were **16** school leavers within this category.

**Table 23: Individual Circumstances of those Unemployed NOT Seeking**



### Section 3.3 Unknown

There was one school leaver whose current destination was unknown at the time of SLDR.

**Skills Development Scotland Renfrewshire Council School Leaver Destination Report  
2009-10**

**Table 24: Destinations by School, Percentage**

School	Higher Education	Further Education	Training	Employment	Voluntary Work	Unemployed Seeking	Unemployed Not Seeking	Not Known	Total Leavers	% Pos	% Other
Castlehead High School	32.9%	32.2%	8.4%	11.2%	0.0%	12.6%	2.8%	0.0%	<b>143</b>	<b>84.6%</b>	15.4%
Gleniffer High School	36.8%	28.8%	4.7%	17.0%	0.0%	12.7%	0.0%	0.0%	<b>212</b>	<b>87.3%</b>	12.7%
Gryffe High School	64.1%	18.0%	1.2%	11.4%	0.0%	4.2%	1.2%	0.0%	<b>167</b>	<b>94.6%</b>	5.4%
Johnstone High School	36.2%	29.6%	4.1%	14.3%	0.0%	15.3%	0.5%	0.0%	<b>196</b>	<b>84.2%</b>	15.8%
Linwood High School	23.0%	27.6%	11.5%	17.2%	2.3%	16.1%	2.3%	0.0%	<b>87</b>	<b>81.6%</b>	18.4%
Paisley Grammar School	34.8%	39.8%	1.8%	13.6%	0.0%	9.5%	0.5%	0.0%	<b>221</b>	<b>90.0%</b>	10.0%
Park Mains High School	46.3%	28.6%	2.6%	15.4%	0.0%	6.6%	0.4%	0.0%	227	93.0%	7.0%
Renfrew High School	32.7%	35.3%	6.0%	20.0%	0.7%	4.0%	0.7%	0.7%	150	94.7%	5.3%
St Andrews Academy	36.3%	24.6%	5.3%	21.1%	0.0%	12.9%	0.0%	0.0%	171	87.1%	12.9%
St Benedicts High School	37.9%	24.2%	8.1%	12.1%	0.0%	16.9%	0.8%	0.0%	124	82.3%	17.7%
Trinity High School	47.3%	27.7%	3.7%	11.7%	0.5%	7.4%	1.6%	0.0%	188	91.0%	9.0%
<b>Renfrewshire Council</b>	<b>39.9%</b>	<b>29.1%</b>	<b>4.6%</b>	<b>15.0%</b>	<b>0.2%</b>	<b>10.3%</b>	<b>0.8%</b>	<b>0.1%</b>	<b>1,886</b>	<b>88.8%</b>	11.2%

## Background Notes:

---

<sup>i</sup> **Positive Destinations:** includes higher education, further education, training, employment and voluntary work. See text above for explanation of each destination heading.

<sup>ii</sup> **The Scottish Index of Multiple Deprivation (SIMD):** SIMD identifies small area concentrations of multiple deprivation across all of Scotland in a consistent way. SDS uses a file created by Scottish Neighbourhood Statistics to identify SIMD based on an individual leaver's postcode. The leaver's postcode is based on the last known address of the leaver as recorded on our client management system. Where there were gaps in the data held on our CMS, the last known address supplied in the annual import of pupil details has been used. As the last known postcode is used it may be that a leaver from one local authority was living in another local authority at the time of the return. Therefore, the SIMD relates to where a leaver was living and not the concentration of SIMD within a local authority.

<sup>iii</sup> **Stage of Leaving:** A **statutory summer leaver** is a school leaver who chooses to leave school at the earliest opportunity (31<sup>st</sup> May) when they become eligible to leave school i.e. their 16<sup>th</sup> birthday falls on or between 1<sup>st</sup> March and 30<sup>th</sup> September in their year of leaving. A **statutory winter leaver** is a school leaver who chooses to leave school at the earliest opportunity when they become eligible to leave school i.e. their 16<sup>th</sup> birthday falls between 1<sup>st</sup> October and the last day in February. A **post statutory leaver** is a school leaver who chose to remain at school past their statutory leave date e.g. a winter leaver who would have been eligible to leave at the winter leave date but choose to remain at school until the summer leave date. Included in this group are leavers who have past their statutory leave date and have left school at any stage throughout the year.

<sup>iv</sup> **Institutions:** through our follow up of leavers, we confirm Further and Higher Education destinations and as part of the process we request further information about the institution a leaver is attending. This is not a requirement of the Scottish Government and the information displayed is based on the recorded detail on Insight, the SDS

<sup>v</sup> **Personal Skills Development:** - Some leavers are not yet ready, or in a position to make an immediate transition to a formal positive destination. In such cases leavers may participate in learning opportunities / personal and social development activities with the aim of improving their confidence and employability. These programmes can be viewed as a stepping stone towards a more formal positive destination. They are often delivered by a community learning and development or third sector organisation and can include the activity agreement pilots. It was agreed, with the Scottish Government, that individuals undertaking these activities would be reported within the unemployed seeking SLDR category.

<sup>vi</sup> **Qualifications on leaving school:** This information is based on pre-appeal information from the Scottish Qualifications Agency where SDS received information about a leaver's qualifications and a robust match of records was made. Where no match was made the qualification level has been gathered through our interaction with individuals.

<sup>vii</sup> **Qualifications on leaving school:** This information is based on pre-appeal information from the Scottish Qualifications Agency where SDS received information about a leaver's qualifications and a robust match of records was made. Where no match was made the qualification level has been gathered through our interaction with individuals.

<sup>viii</sup> **Looked After at Home/ Looked after away from home:** This refers to recent school leavers that SDS has recorded information that they had an episode of being looked after at home or looked after away from home. This information is gathered in a variety of ways including local SDS contact with Social Work departments, data received through the school import process or via direct contact with individuals. It is recognised that this information may not be complete when compared with similar data from social work services departments. However SDS is working with the Scottish Government and local authorities to look at improving the sharing of information in respect of these young people therefore the figures used are indicative.

<sup>ix</sup> **Additional Support Plan Recorded:** SDS receives data from all local authority schools and school centres with pupils in stages S1-S6 or special schools to import into our client management system. We receive information about those who have co-ordinated support plans (CSP) and individualised educational programmes. We also gather information directly from individuals and via our ongoing work with schools. We acknowledge that the data may vary from that held by local authorities therefore the figures used are indicative.

<sup>x</sup> **Health Factor/Additional Support Need Identified:** SDS receives data from all local authority schools and school centres with pupils in stages S1-S6 or special schools to import into our client management system. We receive information about those who have identified additional support needs. We also gather information directly from individuals and via our ongoing work with schools. We acknowledge that the data may vary from that held by local authorities therefore the figures used are indicative.

<sup>xi</sup>**Intermediate Data zone Geography:** The data zone is the key small area statistical geography in Scotland. The intermediate geography is built up from data zones and can be used to disseminate statistics that are not suitable for release at the data zone level. Due to the small number of individuals it has been decided to use the intermediate level geography. There are 1235 intermediate zones in Scotland, containing on average 4000 household residents and these have been designed to respect local authority boundaries as at 2001 Census.