

School Leaver Destination Report

2009 – 2010

Perth & Kinross Council

Contents

Section 1: Overview – Main Findings	3
<i>Table 1: Destination Totals</i>	4
<i>Table 2: Local Authority Comparison to Scotland</i>	4
Section 1.1 - Annual Trends	5
<i>Table 3: Trends 2000 – 2010 of Positive Destinations</i>	5
<i>Table 4: Trends 2000 – 2010 of Other Destinations</i>	5
<i>Table 5: Destinations from 2000 to 2010</i>	6
Section 1.2: Client Characteristics	6
<i>Table 6: Destination split by Gender</i>	6
<i>Table 7: Gender split within each destination</i>	7
<i>Table 9: Destination by Stage Left School</i>	8
Section 2: Positive Destinations	8
Section 2.1 Higher and Further Education	8
<i>Table 10: HE Entrants by Institution Type</i>	8
<i>Table 11: HE Students by Institution</i>	9
<i>Table 12: HE Students by FE Colleges</i>	9
<i>Table 13: FE Students by FE Colleges</i>	9
<i>Table 14: Higher Education Course Information</i>	9
<i>Table 15: Further Education Course Information</i>	9
<i>Table 17: Gender split within the course areas in both FE/HE</i>	11
Section 2.2: Employment	12
<i>Table 18: Those entering Employment by Occupational Area</i>	12
<i>Table 19: Gender split within the top employment areas</i>	12
Section 3: Other Destinations	13
Section 3.1 Unemployed Seeking	13
<i>Table 20: Client Characteristics</i>	13
<i>Table 21: Leavers by Intermediate Data zone</i>	14
<i>Table 22: Destinations of School Leavers: % Unemployed Seeking, 2009/10</i>	15
Section 3.2 Unemployed NOT Seeking	15
Section 3.2 Unemployed NOT Seeking	16
<i>Table 23: Individual Circumstances of those Unemployed NOT Seeking</i>	16
Section 3.3 Unknown	16
<i>Table 24: Destinations by School, Percentage</i>	17
<i>Background Notes:</i>	18

Skills Development Scotland
Perth & Kinross Council School Leaver Destination Report 2009-10

Background

The School Leaver Destination Return (SLDR) is a statistical return undertaken by Skills Development Scotland (SDS) on behalf of the Scottish Government. The Return is based on a follow up of young people who left school between the 1st of August 2009 and the 31st of July 2010. This exercise was carried out during the month of September 2010.

The Scottish Government use the data produced from the Return to report against the National Indicator and target, “increase the proportion of school leavers (from Scottish publicly funded schools) in positive and sustained destinations (FE, HE, employment or training)”. Partners, particularly Local Authorities, use the data to inform initiatives developed as part of the More Choices More Chances Strategy, to evidence the success of initiatives, measure progress against targets, and to identify areas to target resources to improve the post school outcomes for young people.

Methodology

The return is carried out during the month of September with staff across Skills Development Scotland following up over 55,000 school leavers. Destinations are confirmed throughout the follow up period and the destination that is reported is the destination that is known at the snapshot date. This year, we reported the information as known to us on 2nd October 2010. Destinations of young people are fluid in nature, therefore, it is possible that a leaver entered employment or training on leaving school but by the time the snapshot was taken this destination may have changed to another destination.

The information that is gathered is recorded within the SDS CMS system (Insight) which enables us to produce MIS reports and populate the data fields to be sent to the Government. This data is transferred at an individual level and undergoes a matching & validation process until a cohort is agreed. This allows the government’s analytical services unit to match the client’s individual outcome with other indicators such as social economic background, additional support needs and stage of leaving, etc. All information in this report, however, is based upon data held within the SDS Insight database which has been analysed to produce the graphs and tables contained within this report.

Analysis

Only leavers from publicly funded secondary schools are within the scope of the SLDR. This report relates to **1,428** leavers from publicly funded secondary schools. This relates to approximately an **8%** increase in the number of leavers reported in the SLDR in 2008-09.

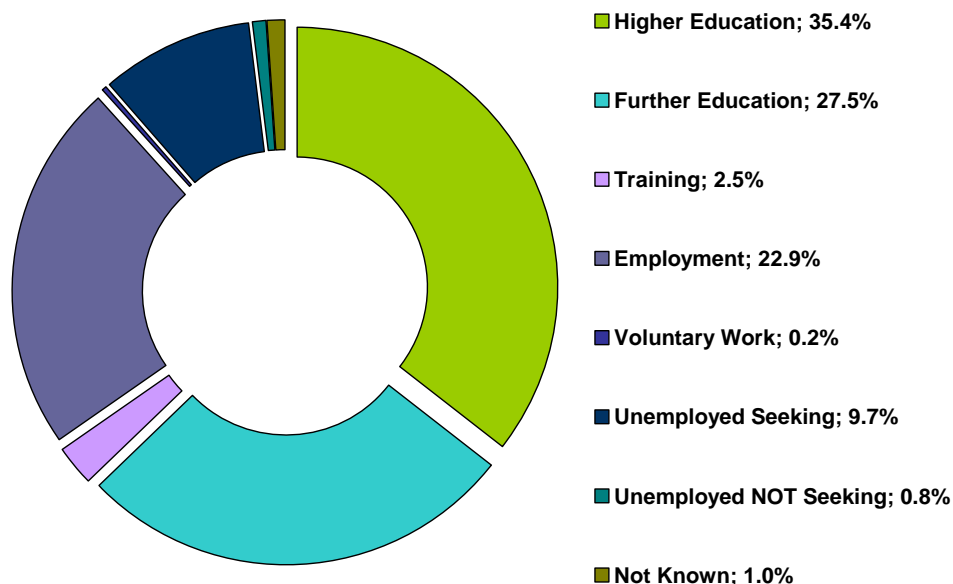
Section 1: Overview – Main Findings

- Overall the percentage of leavers entering a positive destinationⁱ is **88.5%**, a very slight fall of **0.1%** on last year. This fall means the authority has the 10th highest level of positive destinations in Scotland, in comparison to 8th highest in 2008-09.
- In comparison to 2008-09, the percentage of leavers entering higher education has increased to **35.4%**, a slight rise of **2.5%** but this is below the national average of **35.7%**.
- The percentage of leavers entering further education has also increased slightly to **27.5%**, an increase of **0.6%** from 2008-09. However, this percentage is slightly above the national average (**27.1%**).
- The percentage of leavers entering training decreased slightly in 2009-10 to **2.5%**, which is under half the national average.
- The percentage of leavers entering employment has also decreased from **24.9%** in 2008-09 to **22.9%**, which is the lowest percentage recorded in a decade. The decrease of 2% is the 3rd highest decrease in Scotland, however in comparison to other authorities Perth & Kinross has the 8th highest percentage of leavers reported within employment.

Skills Development Scotland Perth & Kinross Council School Leaver Destination Report 2009-10

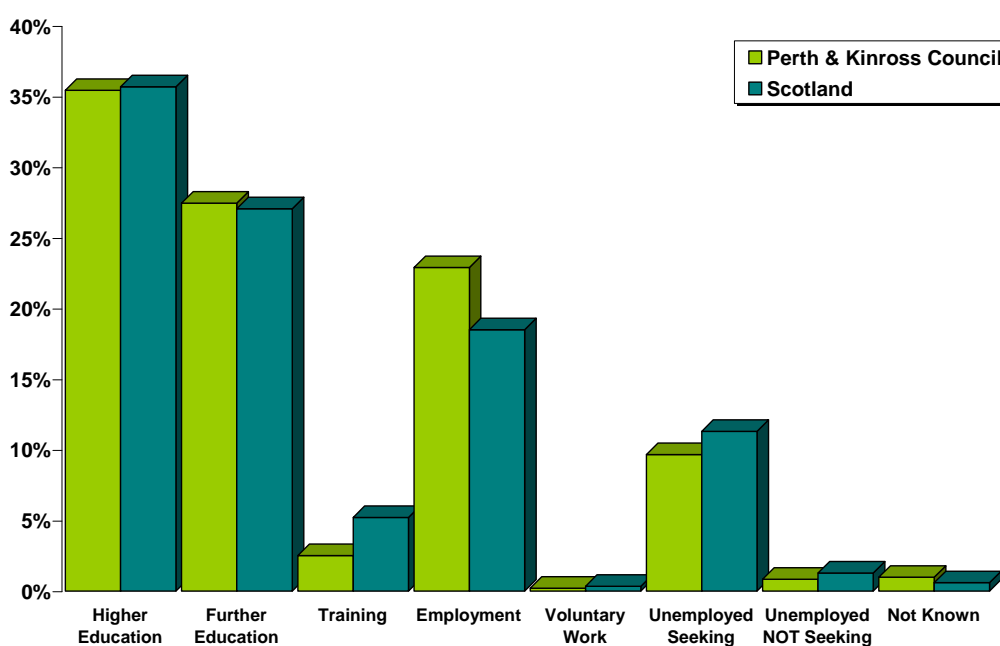
- The percentage of leavers who are unemployed seeking has increased to **9.7%**, around **1.6%** lower than the national average but **1.3%** higher than last year.
- School leavers whose destination is unknown to SDS has fallen to **1%**, but this is around **0.4%** higher than the national average.

Table 1: Destination Totals



Area	Total Leavers	Higher Education	Further Education	Training	Employment	Voluntary Work	Unemployed Seeking	Unemployed NOT Seeking	Not Known
Perth & Kinross	1,428	35.4% 506	27.5% 392	2.5% 36	22.9% 327	0.2% 3	9.7% 138	0.8% 12	1.0% 14
Scotland	54,097	35.7% 19,309	27.1% 14,637	5.2% 2,822	18.5% 10,005	0.3% 187	11.3% 6,117	1.3% 696	0.6% 324

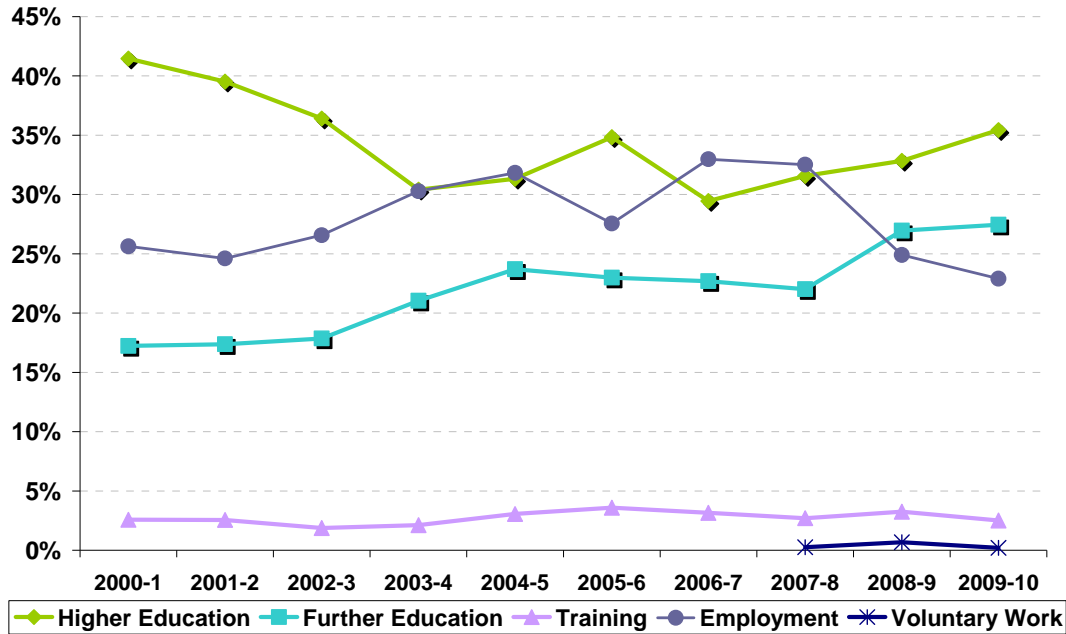
Table 2: Local Authority Comparison to Scotland



**Skills Development Scotland
Perth & Kinross Council School Leaver Destination Report 2009-10**

Section 1.1 - Annual Trends

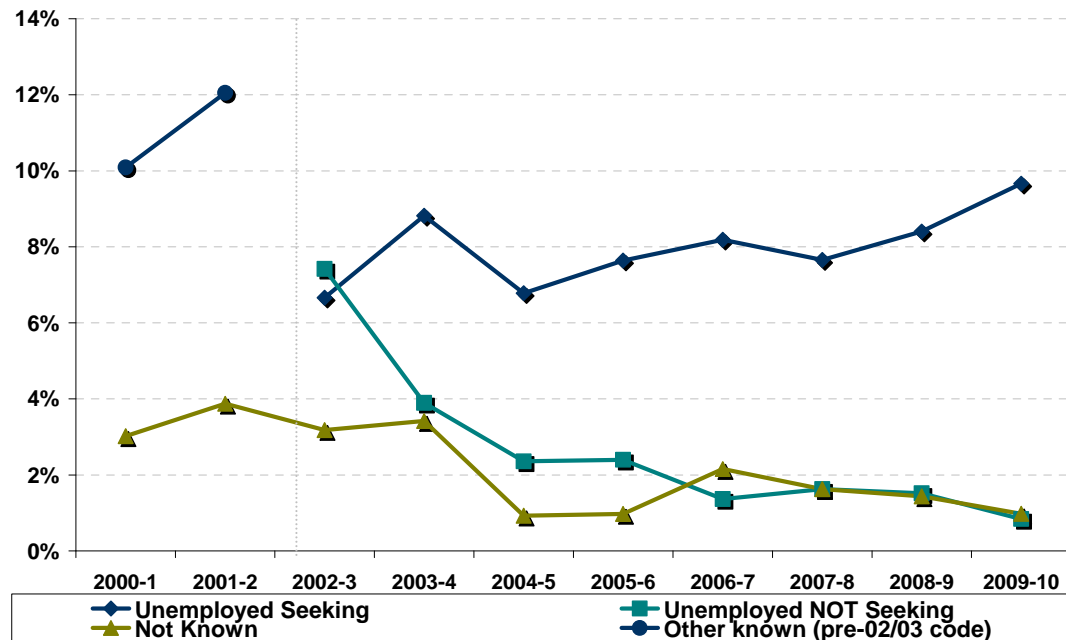
Table 3: Trends 2000 – 2010 of Positive Destinations



Note: Voluntary Work has been included as a separate destination category since the 2007- 08 SLDR return but was reported within the unemployed not seeking category previously.

Over the last ten years the highest percentage of leavers entering higher education was reported in 2000-01 at **41.5%**. By 2006-07, this percentage had fallen to its lowest level at **29.5%**. Over the last three returns, however, the percentage of leavers entering higher education has risen steadily to **35.4%** but this is still **6%** lower than ten years ago. In comparison, the lowest percentage of leavers entering further education was reported in 2000-01 at **17.2%** and this has now risen to the highest level in a decade at **27.5%**, just over **10%** higher than ten years ago. Over the last ten years the percentage of leavers entering employment has been variable with the highest percentage reported in 2006-7 at **33%**, however over the last three years to the 2009-10 there has been a sharp decline in the percentage of leavers entering employment which now sits at 22.9%, around 10% lower than the high point of the decade.

Table 4: Trends 2000 – 2010 of Other Destinations



Skills Development Scotland
Perth & Kinross Council School Leaver Destination Report 2009-10

The lowest percentage of leavers reported as unemployed seeking was reported in 2002-03 at **6.7%** and this level fluctuated over the years. However, over the last 2 returns this percentage has been rising from **7.7%** in 2007-08 to **9.7%** in 2009-10, **3%** higher than 2002-03. In contrast the percentage of leavers reported as unemployed not seeking started at its highest level in 2002-03 at **7.4%**, higher than the percentage for unemployed seeking, but this has steadily declined year on year and now sits at **0.8%**.

Table 5: Destinations from 2000 to 2010

Year	Total Leavers	Higher Education	Further Education	Training	Employment	Voluntary Work	Unemployed Seeking	Unemployed NOT Seeking	Not Known	Other Known
2000-1	1,358	41.5%	17.2%	2.6%	25.6%				3.0%	10.1%
2001-2	1,369	39.5%	17.4%	2.6%	24.6%				3.9%	12.1%
2002-3	1,321	36.4%	17.9%	1.9%	26.6%		6.7%	7.4%	3.2%	
2003-4	1,463	30.4%	21.1%	2.1%	30.3%		8.8%	3.9%	3.4%	
2004-5	1,401	31.3%	23.7%	3.1%	31.8%		6.8%	2.4%	0.9%	
2005-6	1,335	34.8%	23.0%	3.6%	27.6%		7.6%	2.4%	1.0%	
2006-7	1,392	29.5%	22.7%	3.2%	33.0%		8.2%	1.4%	2.2%	
2007-8	1,476	31.6%	22.0%	2.7%	32.5%	0.3%	7.7%	1.6%	1.6%	
2008-9	1,321	32.9%	26.9%	3.3%	24.9%	0.7%	8.4%	1.5%	1.4%	
2009-10	1,428	35.4%	27.5%	2.5%	22.9%	0.2%	9.7%	0.8%	1.0%	

Note: Prior to 2002-03 both the unemployed seeking and unemployed not seeking categories were reported in a separate category called Other Known. This is reflected in the table and graph above.

Section 1.2: Client Characteristics

Table 6: Destination split by Gender



Year	Total Leavers	Higher Education	Further Education	Training	Employment	Voluntary Work	Unemployed Seeking	Unemployed NOT Seeking	Not Known
Male	757	30.3%	27.5%	2.8%	26.0%	0.3%	12.4%	0.1%	0.7%
Female	671	41.3%	27.4%	2.2%	19.4%	0.1%	6.6%	1.6%	1.3%

Female leavers (**90.5%**) are more likely than male leavers (**86.8%**) to enter positive destinations on leaving school. The proportion of female leavers who continue their education in either higher or further education is **68.7%** compared to **57.7%** of males, a difference of **11%**. The percentage of males entering employment and training (**28.8%**) is just over **7%** higher than that for females

Skills Development Scotland
Perth & Kinross Council School Leaver Destination Report 2009-10

(21.6%). Males are more likely to become unemployed and seeking than females with over 68% of leavers reported as unemployed seeking being male.

Table 7: Gender split within each destination

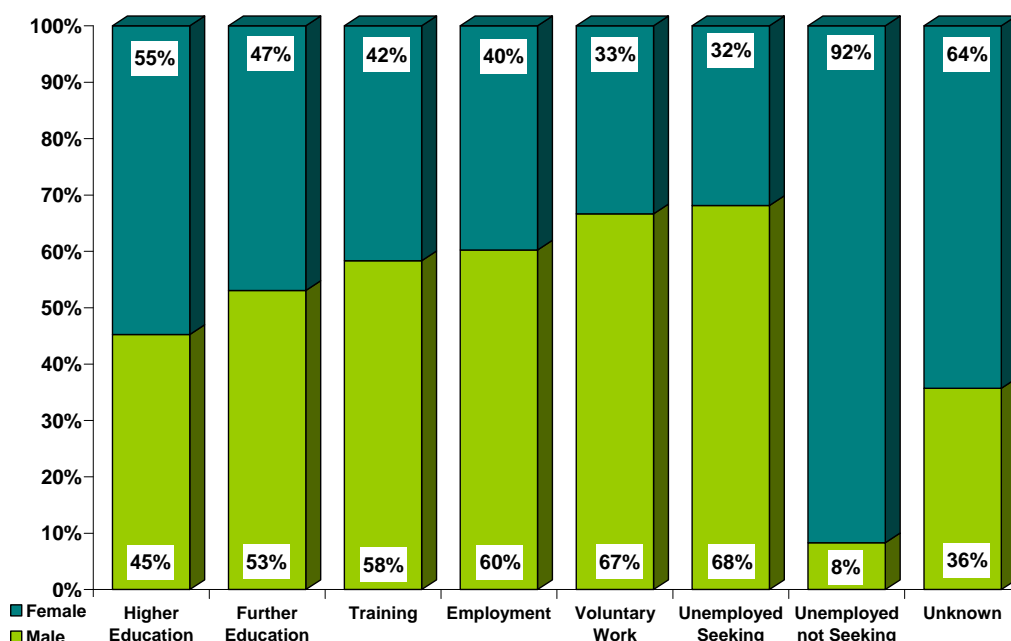


Table 8: Destination by SIMD

SIMD Decile ⁱⁱ	Most Deprived → Least Deprived										Unknown
	1	2	3	4	5	6	7	8	9	10	
Higher Education	*	20%	8%	22%	29%	31%	37%	38%	51%	55%	*
Further Education	32%	35%	52%	28%	27%	28%	30%	28%	21%	11%	*
Training	*	*	*	*	*	*	2%	*	*	*	*
Employment	16%	24%	25%	30%	29%	23%	21%	24%	18%	26%	*
Voluntary Work	*	*	*	*	*	*	*	*	*	*	*
Unemployed Seeking	32%	16%	11%	13%	11%	14%	9%	6%	6%	4%	*
U/E Not Seeking	*	*	*	*	*	*	*	*	*	*	*
Unknown	*	*	*	*	*	*	*	*	*	*	*
Positive Destinations	58%	82%	89%	84%	89%	84%	90%	92%	92%	93%	75%
Total	38	51	65	106	70	186	334	247	192	135	4
% of Total Leavers	3%	4%	5%	7%	5%	13%	23%	17%	13%	9%	0%

Data & percentages based on less than 5 leavers have been suppressed due to disclosure and quality reasons.

- In general, leavers who live in the least deprived areas are more likely to enter positive destinations on leaving school than those from the most deprived area. For example 93% of those who live in SIMD 10 enter positive destinations whereas 58% of those in SIMD 1 enter positive destinations.
- Leavers who live in the least deprived areas are more likely to enter Higher Education in comparison to leavers who live in the most deprived areas. The proportion leavers entering higher education from the least deprived area (55%) is over two and half the proportion for leavers from one the most deprived areas SIMD 2, (20%). It is noticeable that from SIMD 4 onwards the percentage of leavers entering higher education gradually rises with each SIMD decile area.
- In all SIMD areas except SIMD 1, the majority of leavers continue with their education post school. The SIMD area that has the highest proportion entering employment is SIMD 4.
- Leavers from most deprived areas are also more likely to be unemployed seeking than leavers from the least deprived areas.

Skills Development Scotland
Perth & Kinross Council School Leaver Destination Report 2009-10

Table 9: Destination by Stage Left School.

Stage of Leaving ⁱⁱⁱ Destination	Statutory Summer Leaver	Statutory Winter Leaver	Post Statutory Leaver
Higher Education	0%	5%	46%
Further Education	54%	32%	22%
Training	6%	11%	1%
Employment	19%	27%	23%
Voluntary Work	*	*	*
Unemployed Seeking	19%	20%	7%
Unemployed Not Seeking	*	*	1%
Unknown	*	4%	1%
Positive Destinations	79%	75%	92%
Total Leavers	200	138	1,090
% of Total Leavers	14%	10%	76%

Data & percentages based on less than 5 leavers have been suppressed due to disclosure and quality reasons.

- It can be noted that the majority of school pupils choose to remain at school past their statutory leave date (**76%**) and this has a positive impact on their positive progression from school. Leavers who stay on past their statutory leave date are more likely to progress to positive outcomes (**92%**) on leaving school with the highest proportion entering higher education (**46%**).
- Statutory winter leavers are the least likely of all the leavers to enter positive destinations and the highest percentage are reported as being in further education (**32%**). Statutory winter leavers are just under three times more likely to be reported as unemployed seeking than a post statutory leaver.
- The majority of statutory summer leavers enter further education with the proportion entering employment and becoming unemployed seeking being equal.

Section 2: Positive Destinations

Section 2.1 Higher and Further Education

Higher Education (HE): This category includes leavers following HND (Higher National Diploma) or HNC (Higher National Certificate) courses, degree courses, courses for the education and training of teachers and higher level courses for professional qualifications. **38** young people with a deferred, unconditional place in higher education for next year have also been included in this year's figures.

Further Education (FE): This category includes leavers undertaking non advanced further education which is not higher education.

From those reported in the SLDR, **506** leavers entered Higher Education and **392** entered Further Education. Detailed analysis can be provided on **99.2% (891)** of this cohort for whom we hold information on institution and course chosen – Higher Education **98.8% (500)** & Further Education **99.7% (391)**.

Table 10: HE Entrants by Institution Type

Institution Type	Total	%
University / HE College	368	74%
FE College	124	25%
Other ¹	8	2%

¹ Other Category includes institutions out with Scotland and other private institutions

Skills Development Scotland
Perth & Kinross Council School Leaver Destination Report 2009-10

Table 11: HE Students by Institution

Institution^{iv}	Total	%	Institution	Total	%
Edinburgh University	45	9%	Heriot Watt University	14	3%
Glasgow University	44	9%	St Andrews University	9	2%
Dundee University	42	8%	Glasgow Caledonian University	8	2%
Stirling University	40	8%	Queen Margaret University	6	1%
The Robert Gordon University	40	8%	Scottish Agricultural College	5	1%
Abertay University Dundee	37	7%	Out with Scotland	8	2%
Aberdeen University	32	6%	Other Institutions	10	2%
Napier University	18	4%	FE Colleges	124	25%
Strathclyde University	18	4%			

Institutions with less than 5 leavers are included in "Other Institutions" in the table above.

Table 12: HE Students by FE Colleges

Institution	Total	%	Institution	Total	%
Perth College	73	15%	Adam Smith College	9	2%
Dundee College	20	4%	Other Colleges	22	4%

Institutions with less than 5 leavers are included in "Other Institutions" in the table above.

Table 13: FE Students by FE Colleges

Institution	Total	%	Institution	Total	%
Perth College	297	76%	Carnegie College	13	3%
Dundee College	32	8%	Other Colleges	21	5%
Elmwood College	22	6%	Out with Scotland	6	2%

Institutions with less than 5 leavers are included in "Other Institutions" in the table above.

Table 14: Higher Education Course Information

Course Area	Total	%	Course Area	Total	%
Arts & Social Sciences	74	15%	Teaching	20	4%
Science & Mathematics	74	15%	Law	18	4%
Administration & Management	45	9%	Hospitality, Catering & Tourism	16	3%
Health & Medicine	41	8%	Animals, Land & Environment	12	2%
Engineering	33	7%	Communications & Media	10	2%
Sport, Leisure & Sport Science	31	6%	Languages	10	2%
Performing Arts	27	5%	Social, Caring & Advisory Services	6	1%
Art and Design	26	5%	Sales & Marketing	5	1%
Computing & ICT	26	5%	Other Course Areas	6	1%
Construction	20	4%			

Table 15: Further Education Course Information

Course Area	Total	%	Course Area	Total	%
Social, Caring & Advisory Services	53	14%	Performing Arts	20	5%
Art and Design	39	10%	Personal Dev & Prep Courses	15	4%
Sport, Leisure & Sport Science	37	9%	Engineering	14	4%
General Education (Highers, etc)	33	8%	Administration & Management	12	3%
Hairdressing & Beauty	30	8%	Computing & ICT	12	3%
Garage Services	28	7%	Health & Medicine	8	2%
Hospitality, Catering & Tourism	28	7%	Security & Protective Services	5	1%
Construction	26	7%	Other Course Areas	9	2%
Animals, Land & Environment	22	6%			

Data & percentages based on less than 5 leavers have been suppressed due to disclosure and quality reasons.

Skills Development Scotland
Perth & Kinross Council School Leaver Destination Report 2009-10

This is the 3rd year that SDS has gathered fuller data, across Scotland, about the course areas entered by school leavers. In 2009-10, both arts & social science and science & mathematics are the areas within higher education that have the highest proportion of leavers. These were the top two course areas last year and both have witnessed a rise in the number of leavers entering these course areas from last year with a **3%** and **2%** rise respectively. Out with the top two course areas the subject area that has witness the largest rise in the number of leavers is art & design with a rise of **12** leavers, from **14** to **26** leavers.

The subject area within further education that has the highest number of leavers are social/caring related subjects e.g. childcare. This was the same as last year and there has been very little change in the actual number of leavers entering this course area. However, art and design has now replaced hairdressing and beauty related subjects as the area with the 2nd highest number of leavers. In 2008-09, **42** leavers entered hairdressing/beauty related courses whereas in 2009-10 this has dropped to **30**. In comparison the number of leavers entering sport and leisure related courses have increased from **17** in 2008-09 to **37** in 2009-10. The other course areas that have witnessed a rise in entrants are construction, **15** to **26**, and hospitality, catering and tourism, **11** to **28**.

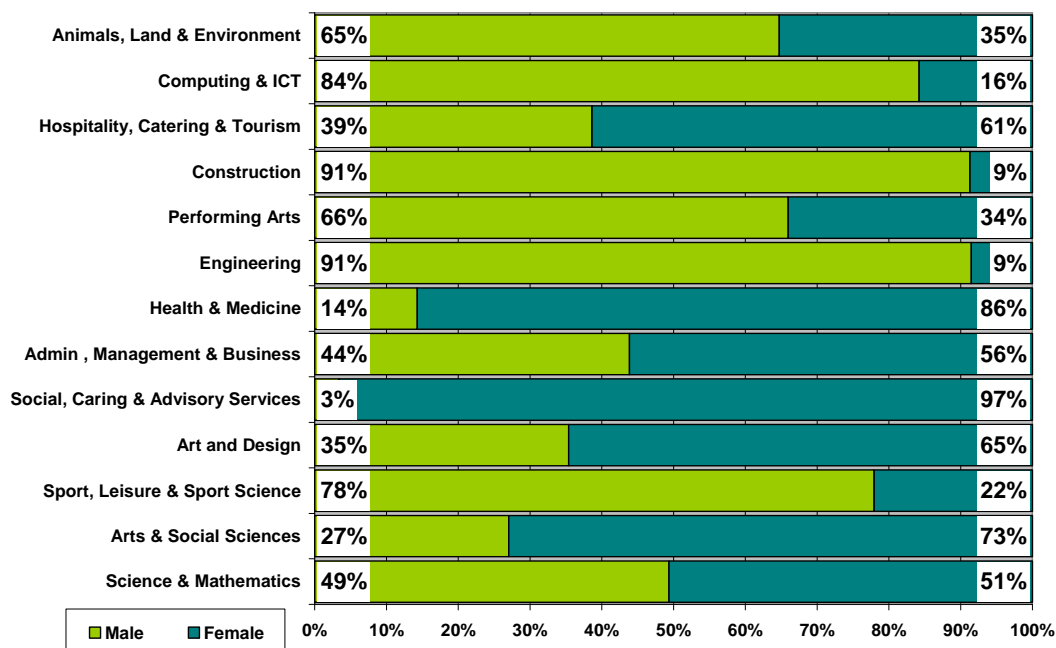
Table 16: Course Information by Gender

Course Area	Male		Female	
	Total	%	Total	%
Science & Mathematics	38	9%	39	9%
Arts & Social Sciences	20	5%	54	12%
Sport, Leisure & Sport Science	53	12%	15	3%
Art and Design	23	5%	42	9%
Social, Caring & Advisory Services	*	*	57	12%
Administration & Management	25	6%	32	7%
Health & Medicine	7	2%	42	9%
Engineering	43	10%	*	*
Performing Arts	31	7%	16	3%
Construction	42	10%	*	*
Hospitality, Catering & Tourism	17	4%	27	6%
Computing & ICT	32	7%	6	1%
Animals, Land & Environment	22	5%	12	3%
General Education (Highers, etc)	11	3%	22	5%
Hairdressing & Beauty	*	*	28	6%
Garage Services	27	6%	*	*
Teaching	6	1%	14	3%
Law	*	*	15	3%
Personal Dev & Prep Courses	10	2%	5	1%
Communications & Media	5	1%	9	2%
Languages	*	*	7	2%
Security & Protective Services	6	1%	*	*

Data & percentages based on less than 5 leavers have been suppressed due to disclosure and quality reasons.

Skills Development Scotland
Perth & Kinross Council School Leaver Destination Report 2009-10

Table 17: Gender split within the course areas in both FE/HE



As outlined previously there has been a substantial increase in the number of leavers entering sports related courses and the majority of entrants to these courses are male. Therefore, this has now become the most popular course area amongst male leavers. Engineering related courses which had the highest level of male leavers last year has dropped into 2nd place. Construction related courses are the 3rd most popular with the actual number of leavers rising by **16**.

The most popular course area for female leavers continues to be social/caring related courses. However, hairdressing and beauty related courses have fallen from being the course area with the 2nd highest number of female leavers 2008-09 to being the 7th highest. The actual number of leavers entering hair & beauty related course has declined by around **40%**, this year in comparison to last year. The course area with the highest increase in female leavers is art & design.

The most popular area for all leavers is science and mathematics and this is a very even split by gender in the number of course entrants. In contrast, subjects in engineering and construction remain male dominated and social/caring related courses remain female dominated.

Skills Development Scotland
Perth & Kinross Council School Leaver Destination Report 2009-10

Section 2.2: Employment

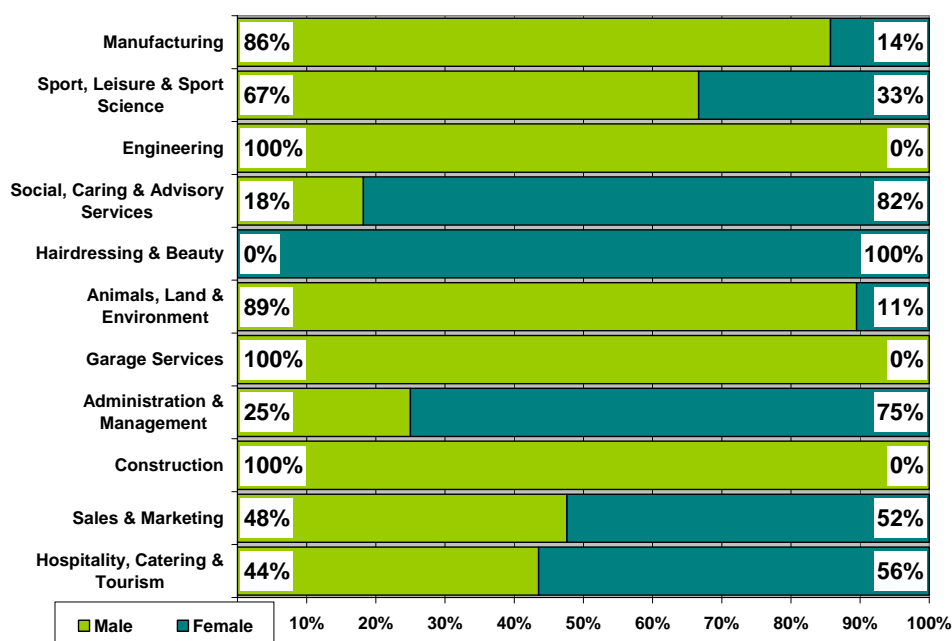
Employment: This category includes those who are employed and who are in receipt of payment from their employers. It includes young people undertaking training in employment through Skillseekers and Modern Apprenticeships. **327** young people entered Employment and analysis can be provided on **100%** of those entering employment for whom we hold information about the occupational area entered.

Table 18: Those entering Employment by Occupational Area

Occupational Area	Male		Female	
	Total	%	Total	%
Hospitality, Catering & Tourism	37	19%	48	37%
Sales & Marketing	30	15%	33	25%
Construction	51	26%	*	*
Administration & Management	6	3%	18	14%
Garage Services	20	10%	*	*
Animals, Land & Environment	17	9%	*	*
Hairdressing & Beauty	*	*	13	10%
Social, Caring & Advisory Services	*	*	9	7%
Engineering	9	5%	0	0%
Sport, Leisure & Sport Science	6	3%	*	*
Manufacturing	6	3%	*	*

Data & percentages based on less than 5 leavers have been suppressed due to disclosure and quality reasons.

Table 19: Gender split within the top employment areas



Hospitality, catering and tourism has replaced sales including retail operations as the the occupational area with the highest number of leavers. There **85** leavers entering employment related to the hospitality industry this year in comparison to **72**, last year. The sales occupations have witnessed a decline from **84** leavers in 2008-09 to 63 in 2009-10. The 3rd highest area for the last 2 years is construction but this has witnessed a rise this year from **41** to **51**.

There is still a gender bias in the occupational areas of construction; garage services and engineering with the all entrants being male whereas hairdressing and social caring roles remain female dominated.

Section 3: Other Destinations

School leavers who do not achieve a positive destination on leaving school are known as the MCMC group and are key customers for Skills Development Scotland and our partner organisations. The SLDR is a snapshot in time and should only be used as an indicator.

Unemployed and seeking employment or training: This category includes those who are in contact with SDS and are known by them to be seeking employment or training. This is based on regular contact between SDS and the client. This does not refer to the definition of 'unemployed' used by the Benefits Agency to calculate published unemployment rates. In 2009-10 it also included those individuals undertaking personal skills development^v. There were **17** leavers who were in this status which equates to **12%** of the unemployed seeking cohort.

Unemployed and not seeking employment or training: This category includes all those individuals who are not seeking employment or training for a range of reasons. These individual circumstances may involve sickness, prison, pregnancy, caring for children or other dependents or taking time out.

Section 3.1 Unemployed Seeking

The table provides a comparison of the percentage of unemployed seeking clients with specific characteristics as opposed to the rate of the full SLDR cohort

Table 20: Client Characteristics

Characteristics	% of Full SLDR	% of Unemployed Seeking
Gender		
Male	53%	68%
Female	47%	32%
Stage Left School		
Statutory Summer Leaver	14%	28%
Statutory Winter Leaver	10%	20%
Post Statutory Leaver	76%	52%
Qualifications on Leaving School^{vi}		
Access 1 / No formal Qualifications	0%	0%
Access 2&3/Foundation Stand. Grade	5%	18%
General Standard Grade/ Intermediate1	15%	24%
Credit Standard Grade/ Intermediate 2	24%	30%
Highers/Advanced Higher	54%	24%
Unknown	2%	4%
Health And Additional Support Needs^{vii}		
Looked After at Home/ Looked after away from home ^{viii}	2%	8%
Additional Support Plan Recorded ^{ix}	7%	14%
Health Factor/Additional Support Need Identified ^x	13%	26%

Data & percentages based on less than 5 leavers have been suppressed due to disclosure and quality reasons.

Skills Development Scotland
Perth & Kinross Council School Leaver Destination Report 2009-10

Table 20: Client Characteristics (cont)

Characteristics		% of Full SLDR	% of Unemployed Seeking
SIMD Decile Ranking /Deprivation (SIMD 2009)			
Most deprived	1	3%	9%
	2	4%	6%
	3	5%	5%
	4	7%	10%
	5	5%	6%
	6	13%	19%
	7	23%	21%
	8	17%	12%
	9	13%	9%
Least Deprived	10	9%	4%
	Unknown	0%	0%

Data & percentages based on less than 5 leavers have been suppressed due to disclosure and quality reasons.

- Although male leavers account for only **53%** of the leaving cohort they account for almost **68%** of leavers reported as unemployed seeking
- Statutory summer leavers represent only **14%** of the whole SLDR cohort but are disproportionately represented within the leavers reported as unemployed seeking at **28%**. A similar situation is evident for statutory winter leavers with **10%** and **20%** respectively.
- The largest proportion of unemployed seeking leavers have credit level standard grades. Those with general level and below represent **20%** of the SLDR cohort whereas they are disproportionately represented in the unemployed seeking cohort at **42%**.
- Leavers who had a period of being looked after at home or away from home are also disproportionately represented within the leavers reported as unemployed seeking as they represent **2%** of the total cohort but account **8%** of the unemployed seeking cohort.
- Likewise having an additional support plan or additional support needs is also an indicator that you may be disproportionately represented in the unemployed seeking cohort

Table 21: Leavers by Intermediate Data zone

There were **138** leavers from Perth & Kinross secondary schools who were reported as unemployed seeking in the SLDR. By using postcodes, we were able to identify areas within the authority where unemployed school leavers were living. However, at the snapshot, **6** of the leavers were living outside the local authority area but a further **7** unemployed seeking school leavers from other local authority schools were residing within Insert LA boundaries. The analysis below is based on **139** leavers residing in the authority and who SDS held postcode information for. The table below shows the intermediate data zones with the highest percentage of unemployed leavers.

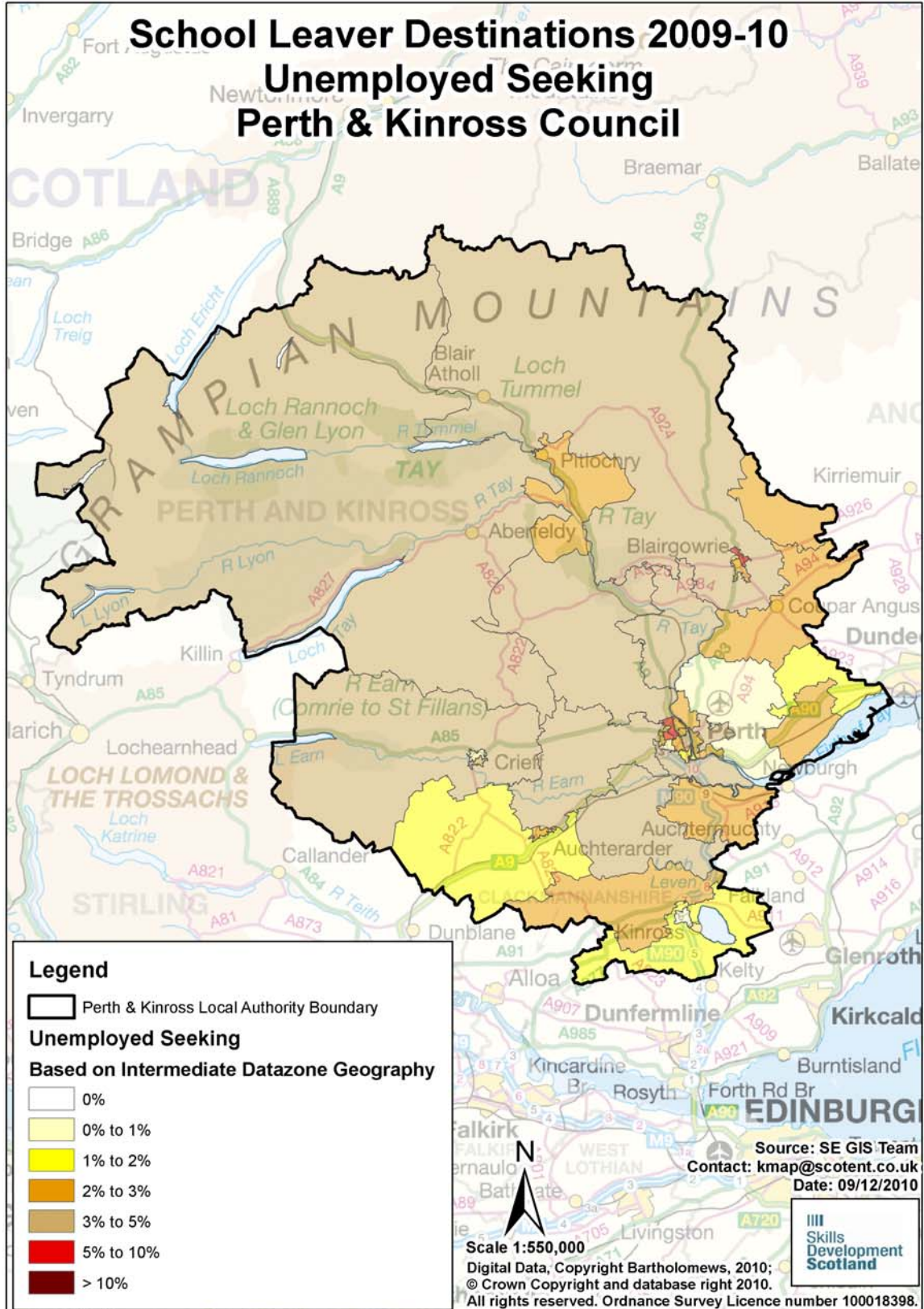
Intermediate Data zone ^{xi}	Total	%	Intermediate Data zone	Total	%
Blairgowrie East (Ratray)	7%	10	Blair Atholl, Strathardle and Glenshee	4%	5
Hillyland, Tulloch and Inveralmond	7%	10	Central, North Inch and South Inch	4%	5
Letham	7%	10	Comrie, Gilmerton and St Fillans	4%	5
Scone	4%	6	Crieff South	4%	5
Stanley and Murthly	4%	6	Glenfarg, Dunning and Rhynd	4%	5
Aberuthven and Almondbank	4%	5	Luncarty and Dunkeld	4%	5

Data & percentages based on less than 5 leavers have been suppressed due to disclosure and quality reasons.

**Skills Development Scotland
Perth & Kinross Council School Leaver Destination Report 2009-10**

Table 22: Destinations of School Leavers: % Unemployed Seeking, 2009/10

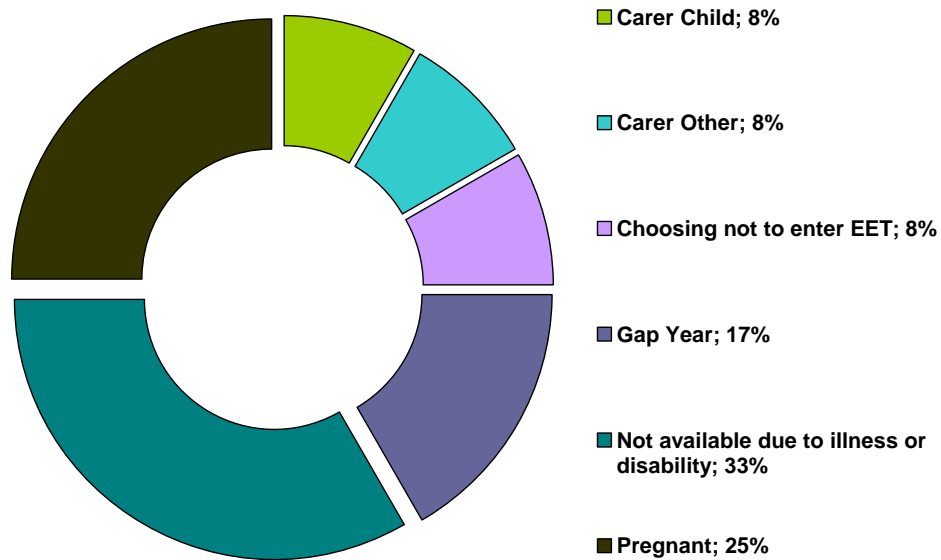
The map shows the intermediate data zones where the 139 leavers who were residing within the local authority boundary reside. Percentages have been calculated as a proportion of the number of leavers reported.



Section 3.2 Unemployed NOT Seeking

There were **12** school leavers within this category. The highest proportion of leavers reported as economically inactive are those who were not available due to illness. Those leavers who were either pregnant or had caring responsibilities for a child represent a third of the unemployed seeking cohort.

Table 23: Individual Circumstances of those Unemployed NOT Seeking



Section 3.3 Unknown

There were **14** school leavers whose destination was unknown at the time of SLDR.

Skills Development Scotland
Perth & Kinross Council School Leaver Destination Report 2009-10

Table 24: Destinations by School, Percentage

School	Higher Education	Further Education	Training	Employment	Voluntary Work	Unemployed Seeking	Unemployed Not Seeking	Not Known	Total Leavers	% Pos	% Other
Blairgowrie High School	25.3%	34.3%	3.4%	23.6%	0.0%	11.8%	0.6%	1.1%	178	86.5%	13.5%
Breadalbane Academy	34.6%	22.8%	1.6%	30.7%	0.0%	10.2%	0.0%	0.0%	127	89.8%	10.2%
Crieff High School	34.1%	25.4%	0.8%	29.4%	0.0%	8.7%	0.8%	0.8%	126	89.7%	10.3%
Kinross High School	50.3%	28.1%	1.8%	14.4%	0.0%	4.2%	0.6%	0.6%	167	94.6%	5.4%
Perth Academy	32.1%	34.2%	1.5%	19.4%	0.0%	11.7%	0.5%	0.5%	196	87.2%	12.8%
Perth Grammar School	21.7%	26.1%	4.9%	27.7%	0.0%	15.8%	1.6%	2.2%	184	80.4%	19.6%
Perth High School	49.3%	23.1%	2.2%	16.0%	0.7%	6.0%	0.7%	1.9%	268	91.4%	8.6%
Pitlochry High	7.1%	21.4%	14.3%	35.7%	0.0%	21.4%	0.0%	0.0%	14	78.6%	21.4%
St John's RC Academy	28.7%	31.0%	1.1%	27.6%	1.1%	8.0%	2.3%	0.0%	87	89.7%	10.3%
The Community School of Auchterarder	35.8%	19.8%	3.7%	29.6%	0.0%	9.9%	1.2%	0.0%	81	88.9%	11.1%
Perth & Kinross Council	35.4%	27.5%	2.5%	22.9%	0.2%	9.7%	0.8%	1.0%	1,428	88.5%	11.5%

Background Notes:

ⁱ **Positive Destinations:** includes higher education, further education, training, employment and voluntary work. See text above for explanation of each destination heading.

ⁱⁱ **The Scottish Index of Multiple Deprivation (SIMD):** SIMD identifies small area concentrations of multiple deprivation across all of Scotland in a consistent way. SDS uses a file created by Scottish Neighbourhood Statistics to identify SIMD based on an individual leaver's postcode. The leaver's postcode is based on the last known address of the leaver as recorded on our client management system. Where there were gaps in the data held on our CMS, the last known address supplied in the annual import of pupil details has been used. As the last known postcode is used it may be that a leaver from one local authority was living in another local authority at the time of the return. Therefore, the SIMD relates to where a leaver was living and not the concentration of SIMD within a local authority.

ⁱⁱⁱ **Stage of Leaving:** A **statutory summer leaver** is a school leaver who chooses to leave school at the earliest opportunity (31st May) when they become eligible to leave school i.e. their 16th birthday falls on or between 1st March and 30th September in their year of leaving. A **statutory winter leaver** is a school leaver who chooses to leave school at the earliest opportunity when they become eligible to leave school i.e. their 16th birthday falls between 1st October and the last day in February. A **post statutory leaver** is a school leaver who chose to remain at school past their statutory leave date e.g. a winter leaver who would have been eligible to leave at the winter leave date but choose to remain at school until the summer leave date. Included in this group are leavers who have past their statutory leave date and have left school at any stage throughout the year.

^{iv} **Institutions:** through our follow up of leavers, we confirm Further and Higher Education destinations and as part of the process we request further information about the institution a leaver is attending. This is not a requirement of the Scottish Government and the information displayed is based on the recorded detail on Insight.

^v **Personal Skills Development:** - Some leavers are not yet ready, or in a position to make an immediate transition to a formal positive destination. In such cases leavers may participate in learning opportunities / personal and social development activities with the aim of improving their confidence and employability. These programmes can be viewed as a stepping stone towards a more formal positive destination. They are often delivered by a community learning and development or third sector organisation and can include the activity agreement pilots. It was agreed, with the Scottish Government, that individuals undertaking these activities would be reported within the unemployed seeking SLDR category.

^{vi} **Qualifications on leaving school:** This information is based on pre-appeal information from the Scottish Qualifications Agency where SDS received information about a leaver's qualifications and a robust match of records was made. Where no match was made the qualification level has been gathered through our interaction with individuals.

^{vii} **Qualifications on leaving school:** This information is based on pre-appeal information from the Scottish Qualifications Agency where SDS received information about a leaver's qualifications and a robust match of records was made. Where no match was made the qualification level has been gathered through our interaction with individuals.

^{viii} **Looked After at Home/ Looked after away from home:** This refers to recent school leavers that SDS has recorded information that they had an episode of being looked after at home or looked after away from home. This information is gathered in a variety of ways including local SDS contact with Social Work departments, data received through the school import process or via direct contact with individuals. It is recognised that this information may not be complete when compared with similar data from social work services departments. However SDS is working with the Scottish Government and local authorities to look at improving the sharing of information in respect of these young people therefore the figures used are indicative.

^{ix} **Additional Support Plan Recorded:** SDS receives data from all local authority schools and school centres with pupils in stages S1-S6 or special schools to import into our client management system. We receive information about those who have co-ordinated support plans (CSP) and individualised educational programmes. We also gather information directly from individuals and via our ongoing work with schools. We acknowledge that the data may vary from that held by local authorities therefore the figures used are indicative.

^x **Health Factor/Additional Support Need Identified:** SDS receives data from all local authority schools and school centres with pupils in stages S1-S6 or special schools to import into our client management system. We receive information about those who have identified additional support needs. We also gather information directly from individuals and via our ongoing work with schools. We acknowledge that the data may vary from that held by local authorities therefore the figures used are indicative.

^{xi}**Intermediate Data zone Geography:** The data zone is the key small area statistical geography in Scotland. The intermediate geography is built up from data zones and can be used to disseminate statistics that are not suitable for release at the data zone level. Due to the small number of individuals it has been decided to use the intermediate level geography. There are 1235 intermediate zones in Scotland, containing on average 4000 household residents and these have been designed to respect local authority boundaries as at 2001 Census.