

School Leaver Destination Report

2009 – 2010

West Lothian Council

Contents

Section 1: Overview – Main Findings	3
<i>Table 1: Destination Totals.....</i>	<i>4</i>
<i>Table 2: Local Authority Comparison to Scotland.....</i>	<i>5</i>
Section 1.1 - Annual Trends	5
<i>Table 3: Trends 2000 – 2010 of Positive Destinations.....</i>	<i>5</i>
<i>Table 4: Trends 2000 – 2010 of Other Destinations.....</i>	<i>6</i>
<i>Table 5: Destinations from 2000 to 2010.....</i>	<i>6</i>
Section 1.2: Client Characteristics	7
<i>Table 6: Destination split by Gender.....</i>	<i>7</i>
<i>Table 8: Destination by SIMD.....</i>	<i>8</i>
<i>Table 9: Destination by Stage Left School.</i>	<i>9</i>
Section 2: Positive Destinations	10
Section 2.1 Higher and Further Education.....	10
<i>Table 10: HE Entrants by Institution Type.....</i>	<i>10</i>
<i>Table 11: HE Students by Institution.....</i>	<i>10</i>
<i>Table 12: HE Students by FE Colleges</i>	<i>10</i>
<i>Table 13: FE Students by FE Colleges.....</i>	<i>11</i>
<i>Table 14: Higher Education Course Information.....</i>	<i>11</i>
<i>Table 15: Further Education Course Information</i>	<i>11</i>
<i>Table 16: Course Information by Gender.....</i>	<i>12</i>
<i>Table 17: Gender split within the course areas in both FE/HE.....</i>	<i>12</i>
Section 2.2: Employment.....	13
<i>Table 18: Those entering Employment by Occupational Area</i>	<i>13</i>
<i>Table 19: Gender split within the top employment areas</i>	<i>13</i>
Section 3: Other Destinations	15
Section 3.1 Unemployed Seeking	15
<i>Table 20: Client Characteristics.....</i>	<i>15</i>
<i>Table 21: Leavers by Intermediate Data zone</i>	<i>16</i>
<i>Table 22: Destinations of School Leavers: % Unemployed Seeking, 2009/10.....</i>	<i>17</i>
Section 3.2 Unemployed NOT Seeking.....	17
Section 3.2 Unemployed NOT Seeking.....	18
<i>Table 23: Individual Circumstances of those Unemployed NOT Seeking.....</i>	<i>18</i>
Section 3.3 Unknown	18
<i>Table 24: Destinations by School, Percentage</i>	<i>19</i>
<i>Background Notes:</i>	<i>20</i>

Background

The School Leaver Destination Return (SLDR) is a statistical return undertaken by Skills Development Scotland (SDS) on behalf of the Scottish Government. The Return is based on a follow up of young people who left school between the 1st of August 2009 and the 31st of July 2010. This exercise was carried out during the month of September 2010.

The Scottish Government use the data produced from the Return to report against the National Indicator and target, “increase the proportion of school leavers (from Scottish publicly funded schools) in positive and sustained destinations (FE, HE, employment or training)”. Partners, particularly Local Authorities, use the data to inform initiatives developed as part of the More Choices More Chances Strategy, to evidence the success of initiatives, measure progress against targets, and to identify areas to target resources to improve the post school outcomes for young people.

Methodology

The return is carried out during the month of September with staff across Skills Development Scotland following up over 55,000 school leavers. Destinations are confirmed throughout the follow up period and the destination that is reported is the destination that is known at the snapshot date. This year, we reported the information as known to us on 2nd October 2010. Destinations of young people are fluid in nature, therefore, it is possible that a leaver entered employment or training on leaving school but by the time the snapshot was taken this destination may have changed to another destination.

The information that is gathered is recorded within the SDS CMS system (Insight) which enables us to produce MIS reports and populate the data fields to be sent to the Government. This data is transferred at an individual level and undergoes a matching & validation process until a cohort is agreed. This allows the government’s analytical services unit to match the client’s individual outcome with other indicators such as social economic background, additional support needs and stage of leaving, etc. All information in this report, however, is based upon data held within the SDS Insight database which has been analysed to produce the graphs and tables contained within this report.

Analysis

Only leavers from publicly funded secondary schools are within the scope of the SLDR. This report relates to **1,978** leavers from publicly funded secondary schools. This relates to approximately a **5%** increase in the number of leavers reported this year in comparison to the SLDR in 2008-09.

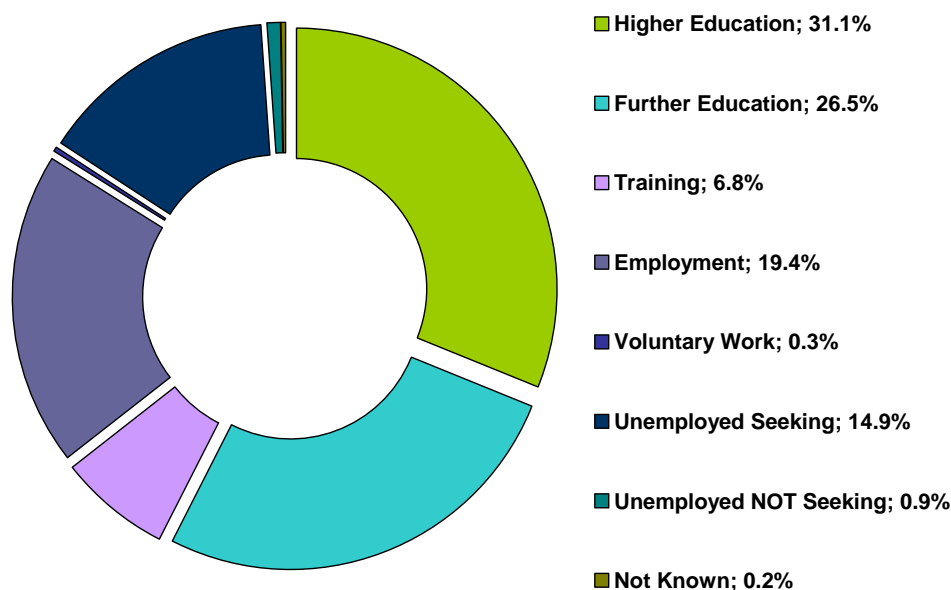
Section 1: Overview – Main Findings

- Overall the percentage of leavers entering a positive destinationⁱ is **84.1%**, a rise of **2.2%** on last year. This rise was the tenth highest in Scotland, which has resulted in the authority moving from the 30th highest proportion of positive destinations to the 29th.
- There was a decrease this year in the proportion of leavers entering further and higher education to **57.6%**, a fall of **2%** compared to last year. The percentage of leavers entering higher education has decreased by **3.1%** to **31.1%** since last year. This is the second largest drop in entrants to higher education, which now places West Lothian as the authority with the twenty eighth highest proportion of leavers entering higher education. There has, however, been an increase of **4.7%** in the number of leavers entering higher education over the last 10 years in the authority.
- The percentage of leavers entering further education also increased last year to **26.5%** which is **0.6%** lower than the Scottish average. There has been a steady rise of **6.3%** in the number of leavers entering further education since 2000 -01.
- The percentage of leavers entering employment has increased since last year from **17.8%** to **19.4%**, however, in 2008-9 there was a significant drop of **9.6%** in the number entering employment, and there has been an overall **11.6%** drop since 2000- 01.

Skills Development Scotland West Lothian Council School Leaver Destination Report 2009-10

- The percentage entering training has increased by **2.6%** from last year to **6.8%**. The lowest number entering training was in 2007 – 08 at **1.8%** and is now currently just **1.2%** below the 2000 – 01 level (**8%**).
- The percentage of leavers who are unemployed seeking has fallen slightly to **14.9%** from **16.7%**, which is still around **3.6%** higher than the national average. The highest level of unemployed seeking in the last 10 years was **17.7%** in 2006 – 07.
- School leavers whose destination is unknown to SDS has fallen to its lowest recorded level at **0.2%**.

Table 1: Destination Totals



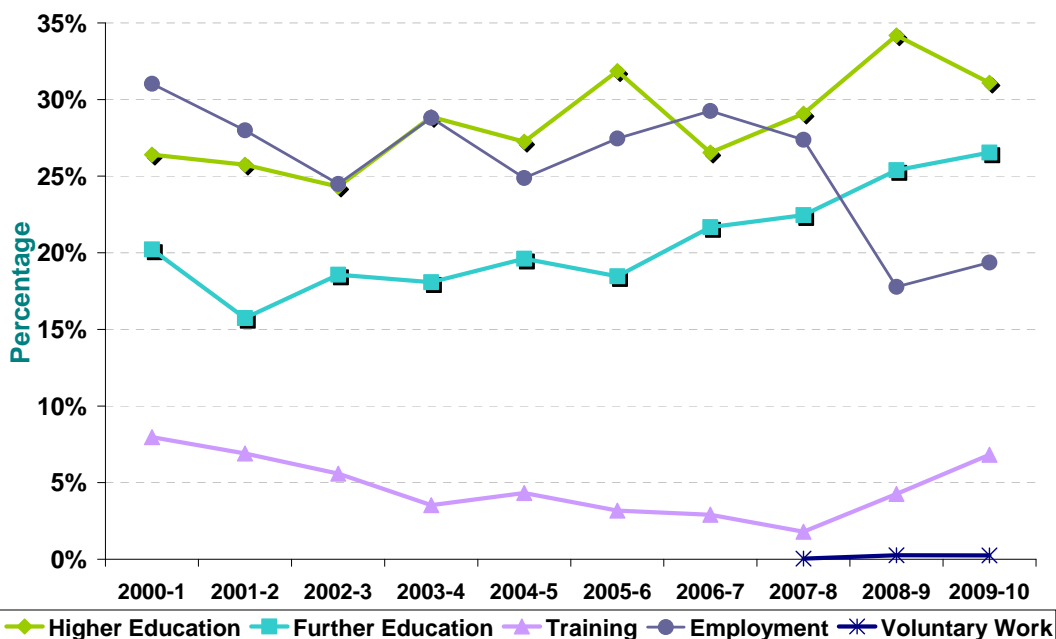
Area	Total Leavers	Higher Education	Further Education	Training	Employment	Voluntary Work	Unemployed Seeking	Unemployed NOT Seeking	Not Known
West Lothian Council	1,978	31.1% 615	26.5% 525	6.8% 135	19.4% 383	0.3% 5	14.9% 294	0.9% 18	0.2% 3
Scotland	54,097	35.7% 19,309	27.1% 14,637	5.2% 2,822	18.5% 10,005	0.3% 187	11.3% 6,117	1.3% 696	0.6% 324

Table 2: Local Authority Comparison to Scotland



Section 1.1 - Annual Trends

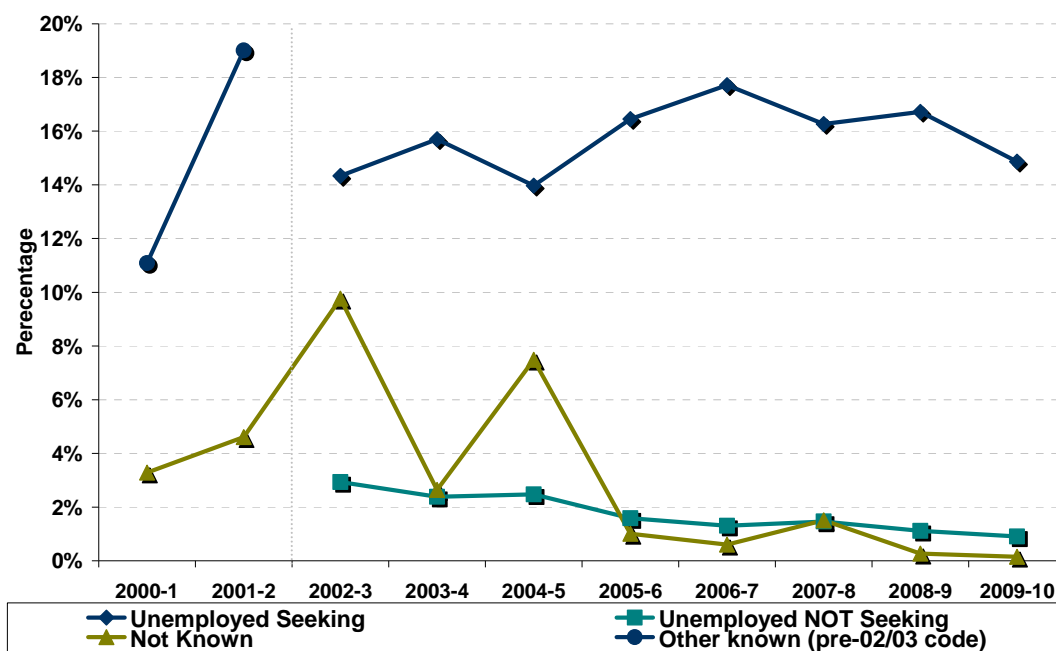
Table 3: Trends 2000 – 2010 of Positive Destinations



Note: Voluntary Work has been included as a separate destination category since the 2007- 08 SLDR return but was reported within the unemployed not seeking category previously.

The percentage of leavers entering higher education is currently **31.1%** which is **4.7%** higher than 10 years ago and peaked last year at **34.2%**. The proportion of leavers entering further education has been rising steadily over the last 10 years by **6.3%** and is at its highest level this year at **26.5%**. In comparison there has been a significant drop by **11.7%** in the number of leavers entering employment over the last 10 years to **19.4%**. The lowest level was **17.8%** in 2008 - 09.

Table 4: Trends 2000 – 2010 of Other Destinations



The proportion of leavers reported as unemployed seeking has remained steady at **14.9%** over the last 10 years peaking at **17.7%** in 2006 - 07. As previously stated, the percentage of leavers unknown has dropped to the lowest level ever at **0.2%**.

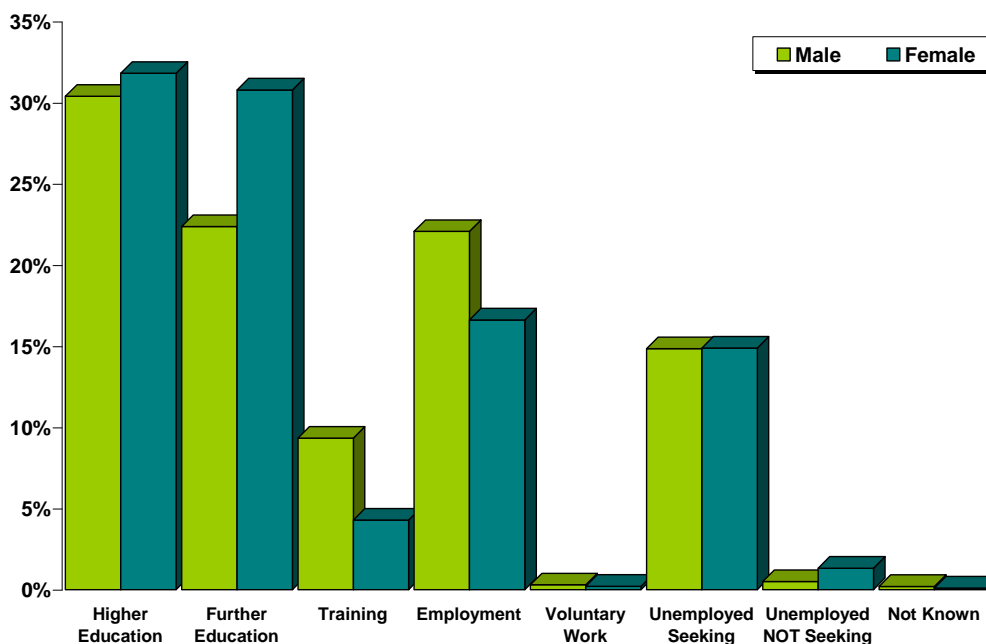
Table 5: Destinations from 2000 to 2010

Year	Total Leavers	Higher Education	Further Education	Training	Employment	Voluntary Work	Unemployed Seeking	Unemployed NOT Seeking	Not Known	Other Known
2000-1	1,795	26.4%	20.2%	8.0%	31.0%				3.3%	11.1%
2001-2	1,868	25.7%	15.7%	6.9%	28.0%				4.6%	19.0%
2002-3	1,772	24.3%	18.6%	5.6%	24.5%		14.3%	2.9%	9.8%	
2003-4	1,930	28.9%	18.1%	3.5%	28.8%		15.7%	2.4%	2.6%	
2004-5	1,897	27.3%	19.6%	4.3%	24.9%		14.0%	2.5%	7.5%	
2005-6	1,890	31.9%	18.5%	3.2%	27.5%		16.5%	1.6%	1.0%	
2006-7	1,993	26.5%	21.7%	2.9%	29.3%		17.7%	1.3%	0.6%	
2007-8	2,053	29.1%	22.5%	1.8%	27.4%	0.0%	16.3%	1.5%	1.5%	
2008-9	1,878	34.2%	25.4%	4.3%	17.8%	0.3%	16.7%	1.1%	0.3%	
2009-10	1,978	31.1%	26.5%	6.8%	19.4%	0.3%	14.9%	0.9%	0.2%	

Note: Prior to 2002-03 both the unemployed seeking and unemployed not seeking categories were reported in a separate category called Other Known. This is reflected in the table and graph above.

Section 1.2: Client Characteristics

Table 6: Destination split by Gender



Gender	Total Leavers	Higher Education	Further Education	Training	Employment	Voluntary Work	Unemployed Seeking	Unemployed NOT Seeking	Not Known
Male	997	30.4%	22.4%	9.3%	22.1%	0.3%	14.8%	0.5%	0.2%
Female	981	31.8%	30.8%	4.3%	16.6%	0.2%	14.9%	1.3%	0.1%

There is an even balance between the percentage of males and females entering a positive destination on leaving school **83.9%** and **84.5%** respectively. The proportion of females continuing in either further or higher education is **9.6%** higher than the males, at **62.6%** compared to **52.6%** respectively. The percentage of males entering employment and training at **31.4%** is **10.5%** higher than that for females at **20.9%**. There is a balance between males and females who are unemployed seeking at **14.8%** and **14.9%** respectively.

Skills Development Scotland West Lothian Council School Leaver Destination Report 2009-10

Table 7: Gender split within each destination

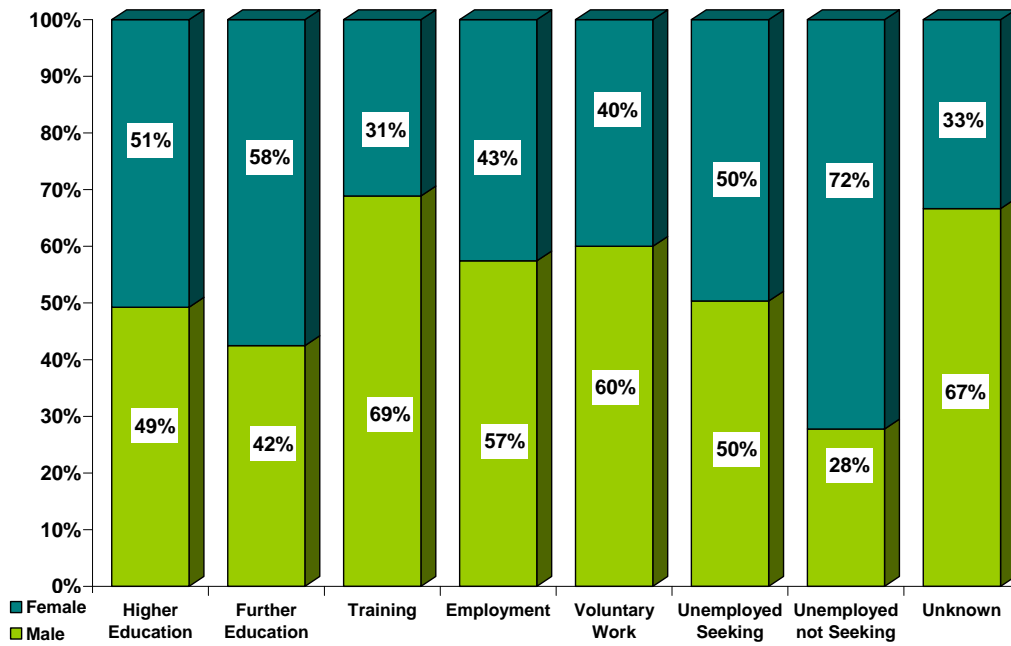


Table 8: Destination by SIMD

SIMD Decile ⁱⁱ	Most Deprived → Least Deprived									
	1	2	3	4	5	6	7	8	9	10
Higher Education	14%	16%	22%	19%	24%	34%	40%	31%	51%	62%
Further Education	30%	28%	33%	32%	31%	20%	26%	24%	21%	16%
Training	11%	14%	9%	9%	6%	5%	3%	*	3%	*
Employment	14%	20%	20%	22%	23%	24%	18%	23%	17%	12%
Voluntary Work	*	*	*	*	*	*	*	*	*	*
Unemployed Seeking	30%	21%	16%	17%	14%	16%	10%	17%	9%	8%
U/E Not Seeking	*	*	*	*	*	*	*	*	*	*
Unknown	*	*	*	*	*	*	*	*	*	*
Positive Destinations	70%	78%	83%	82%	85%	83%	88%	82%	91%	91%
Total	57	299	292	286	177	162	201	96	187	221
% of Total Leavers	3%	15%	15%	14%	9%	8%	10%	5%	9%	11%

Percentages based on 5 or less have been suppressed due to disclosure reasons.

- Leavers who live in the least deprived areas are more likely to enter positive destinations on leaving school than those from the most deprived area. For example, there are a similar percentage of leavers from SIMD 9 and SIMD 1 but their outcomes are different. There is a **21%** difference in the proportion entering positive outcomes with **91%** of those in SIMD 9 entering positive destinations compared to **70%** in SIMD 1.
- Leavers who live in the least deprived areas are more likely to enter Higher Education in comparison to leavers who live in the most deprived areas. The proportion leavers entering higher education from the least deprived area was **62%** which is more than treble the proportion for leavers from the most deprived area which was **14%**
- Leavers from most deprived areas are more likely to be unemployed seeking than leavers from the least deprived areas. Using the example of SIMD 1 and SIMD 9, as above, there were **30%** of leavers reported as unemployed seeking from SIMD 1 in comparison to **8%** in SIMD 9.

Table 9: Destination by Stage Left School.

Stage of Leavingⁱⁱⁱ Destination	Statutory Summer Leaver	Statutory Winter Leaver	Post Statutory Leaver
Higher Education	*	*	42%
Further Education	40%	20%	25%
Training	23%	13%	3%
Employment	16%	28%	19%
Voluntary Work	*	*	0%
Unemployed Seeking	20%	36%	11%
Unemployed Not Seeking	*	*	1%
Unknown	*	*	*
Positive Destinations	79%	62%	88%
Total Leavers	301	213	1,464
% of Total Leavers	15%	11%	74%

- It can be noted that the majority of school pupils choose to remain at school past their statutory leave date and this has an impact on their positive progression from school. Leavers who stay on past their statutory leave date are more likely to progress to positive outcomes on leaving school with the majority entering higher education.
- Although they are in the minority, statutory winter leavers are less likely to enter positive destinations than other leavers. The highest proportion of winter leavers are reported as being unemployed seeking. They **(36%)** are around three times more likely to be reported as unemployed seeking than a post statutory leaver **(11%)**.
- The highest proportion of statutory summer leavers enter further education **(40%)** with training being the 2nd highest **(23%)**.

Section 2: Positive Destinations

Section 2.1 Higher and Further Education

Higher Education (HE): This category includes leavers following HND (Higher National Diploma) or HNC (Higher National Certificate) courses, degree courses, courses for the education and training of teachers and higher level courses for professional qualifications. **13** young people with a deferred, unconditional place in higher education for next year have also been included in this year's figures.

Further Education (FE): This category includes leavers undertaking non advanced further education which is not higher education.

From those reported in the SLDR, **615** leavers entered Higher Education and **525** entered Further Education. Detailed analysis can be provided on **99.2% (1,131)** of this cohort for whom we hold information on institution and course chosen – Higher Education **99.2% (610)** & Further Education **99.2% (521)**.

Table 10: HE Entrants by Institution Type

Institution Type	Total	%
University / HE College	418	69%
FE College	183	30%
Other ¹	9	1%

¹ Other Category includes institutions out with Scotland and other private institutions

Table 11: HE Students by Institution

Institution ^{IV}	Total	%	Institution	Total	%
Edinburgh University	78	13%	Strathclyde University	14	2%
Heriot Watt University	60	10%	West of Scotland University	14	2%
Napier University	56	9%	Dundee University	12	2%
Stirling University	48	8%	The Robert Gordon University	12	2%
Glasgow University	32	5%	St Andrews University	5	1%
Abertay University Dundee	23	4%	Outwith Scotland	9	1%
Glasgow Caledonian University	23	4%	FE Colleges	183	30%
Aberdeen University	16	3%	Other Institutions	9	1%%
Queen Margaret University	16	3%			

Institutions with less than 5 leavers are included in "Other Institutions" in the table above.

Table 12: HE Students by FE Colleges

Institution	Total	%	Institution	Total	%
West Lothian College	86	14%	Glasgow Metropolitan College	6	1%
Stevenson College	38	6%	Jewel and Esk College	5	1%
Forth Valley College of Further & Higher Education	18	3%	Other Institutions	17	3%
Edinburgh's Telford College	13	2%			

Institutions with less than 5 leavers are included in "Other Institutions" in the table above.

Table 13: FE Students by FE Colleges

Institution	Total	%	Institution	Total	%
West Lothian College	353	68%	Forth Valley College of Further & Higher Education	21	4%
Stevenson College	51	10%	Other Institutions	24	5%
Edinburgh's Telford College	40	8%	Out With Scotland	5	1%
Oatridge College	27	5%			

Institutions with less than 5 leavers are included in "Other Institutions" in the table above.

It can be noted from tables 11, 12 & 13 that the majority of leavers who continue their studies post school, choose to attend local institutions.

Table 14: Higher Education Course Information

Course Area	Total	%	Course Area	Total	%
Arts & Social Sciences	101	17%	Law	23	4%
Science & Mathematics	75	12%	Hospitality, Catering & Tourism	22	4%
Health & Medicine	46	8%	Finance	14	2%
Administration & Management	45	7%	Social, Caring & Advisory Services	14	2%
Sport, Leisure & Sport Science	45	7%	Communications & Media	13	2%
Computing & ICT	43	7%	Languages	8	1%
Engineering	39	6%	Animals, Land & Environment	7	1%
Art and Design	29	5%	Hairdressing & Beauty	6	1%
Construction	25	4%	Sales & Marketing	5	1%
Performing Arts	25	4%	Other Course Areas	1	0%
Teaching	24	4%			

Table 15: Further Education Course Information

Course Area	Total	%	Course Area	Total	%
Social, Caring & Advisory Services	90	17%	Hospitality, Catering & Tourism	21	4%
Construction	54	10%	Engineering	17	3%
Hairdressing & Beauty	47	9%	Personal Dev. & Prep Courses	15	3%
Art and Design	42	8%	Administration & Management	13	2%
Sport, Leisure & Sport Science	34	7%	Health & Medicine	13	2%
Computing & ICT	32	6%	Security & Protective Services	13	2%
Animals, Land & Environment	31	6%	Arts & Social Sciences	11	2%
Performing Arts	29	6%	Communications & Media	9	2%
General Education (Highers, etc)	23	4%	Other Course Areas	6	1%
Garage Services	21	4%			

This is the 3rd year that SDS has gathered fuller data, across Scotland, about the course areas entered by school leavers. It shows that there has been no change in the course areas entered by leavers who enter higher education and the top four choices remain static. Arts and social science based subjects are the most popular followed by science and mathematics.

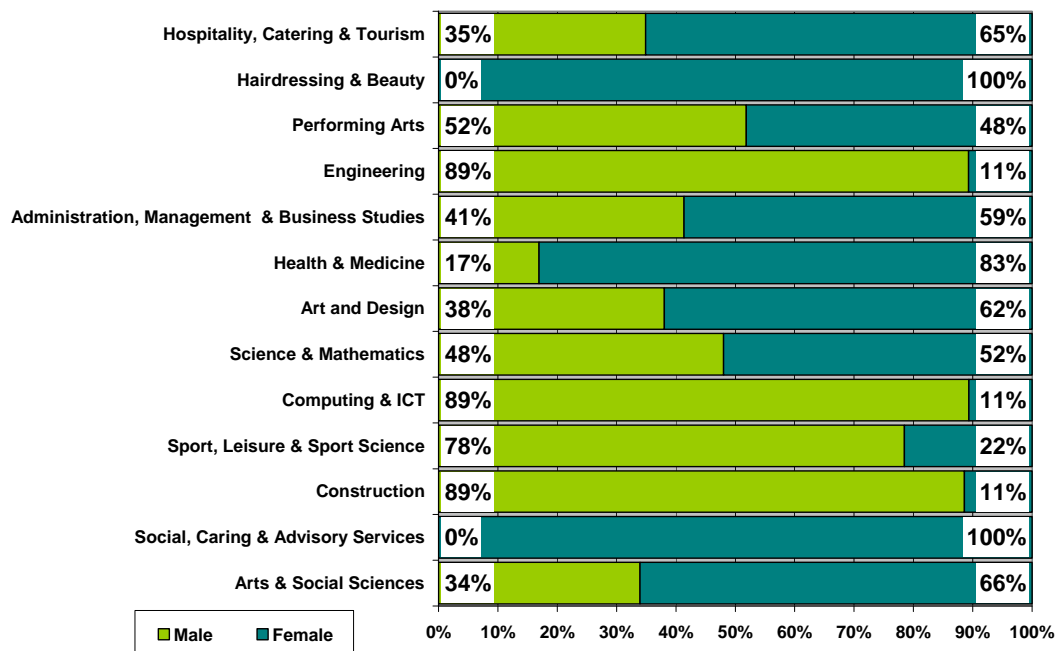
Within further education, the first choice remains Social/Caring related courses e.g. childcare or social care.

Table 16: Course Information by Gender

Course Area	Male		Female	
	Total	%	Total	%
Arts & Social Sciences	38	7%	74	12%
Social, Caring & Advisory Services	*	*	104	17%
Construction	70	13%	9	1%
Sport, Leisure & Sport Science	62	12%	17	3%
Computing & ICT	67	13%	8	1%
Science & Mathematics	36	7%	39	6%
Art and Design	27	5%	44	7%
Health & Medicine	10	2%	49	8%
Administration & Management	24	5%	34	6%
Engineering	50	10%	6	1%
Performing Arts	28	5%	26	4%
Hairdressing & Beauty	*	*	53	9%
Hospitality, Catering & Tourism	15	3%	28	5%
Animals, Land & Environment	16	3%	22	4%
Law	11	2%	13	2%
Teaching	6	1%	18	3%
General Education (Highers, etc)	*	*	20	3%
Communications & Media	14	3%	8	1%
Garage Services	17	3%	4	1%
Personal Dev & Prep Courses	8	2%	7	1%
Finance	5	1%	9	1%

Courses with less than 5 leavers have been suppressed

Table 17: Gender split within the course areas in both FE/HE



Construction remains the most popular choice with male leavers at **13%** with Sports, Leisure and Sport Science at **12%**. In comparison, Social and Caring related courses remains the most popular courses with females (**17%**) with Arts & Social Science following at **12%**.

Section 2.2: Employment

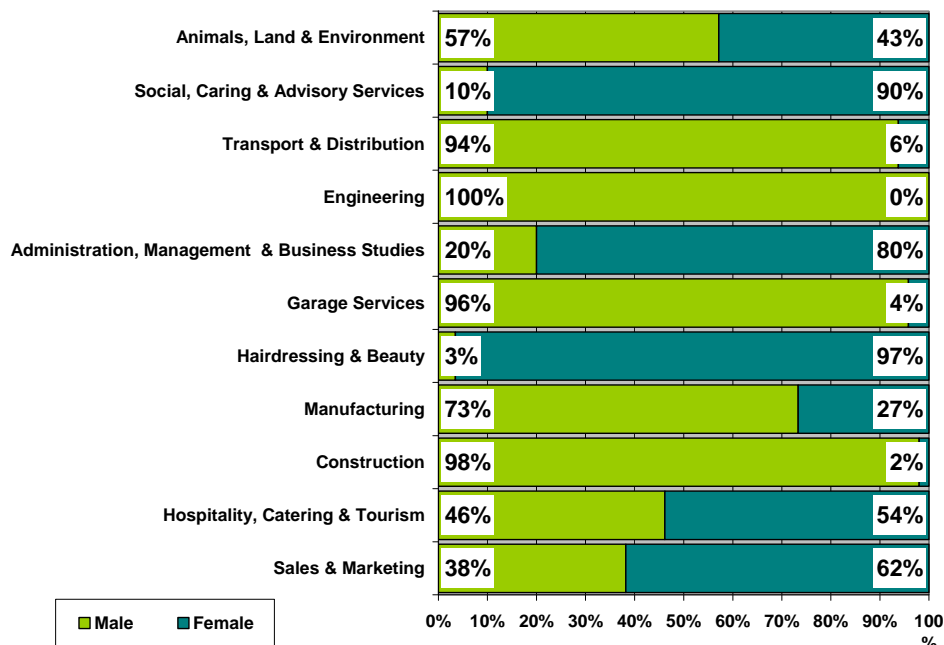
Employment: This category includes those who are employed and who are in receipt of payment from their employers. It includes young people undertaking training in employment through Skillseekers and Modern Apprenticeships. **383** young people entered Employment and analysis can be provided on all of those entering employment for whom we hold information about the occupational area entered.

Table 18: Those entering Employment by Occupational Area

Occupational Area	Male		Female	
	Total	%	Total	%
Sales & Marketing	34	16%	55	34%
Hospitality, Catering & Tourism	24	11%	28	18%
Construction	49	22%	*	*
Manufacturing	33	15%	12	8%
Hairdressing & Beauty	*	*	28	18%
Garage Services	23	11%	*	*
Administration & Management	*	*	16	10%
Engineering	16	7%	*	*
Transport & Distribution	15	7%	*	*
Social, Caring & Advisory Services	*	*	9	6%

Occupational areas with less than 5 leavers have been suppressed

Table 19: Gender split within the top employment areas



The most popular area of employment entered by all school leavers continues to be Sales & Marketing which includes retail operations with **23%** of those entering employment working in this sector.

The majority of males continue to enter Construction related jobs with **22%** of male leavers gaining employment in this occupational area. The second most popular area is Sales and Marketing with **16%** of males entering this sector. These are closely followed by Manufacturing at **15%** entering this occupational area.

Sales and Marketing which includes retail is the most popular occupational area for female leavers at **34%**, Hospitality, Catering & Tourism and Hairdressing and Beauty are the next most popular choice, both at **(18%)**.

Section 3: Other Destinations

School leavers who do not achieve a positive destination on leaving school are known as the MCMC group and are key customers for Skills Development Scotland and our partner organisations. The SLDR is a snapshot in time and should only be used as an indicator.

Unemployed and seeking employment or training: This category includes those who are in contact with SDS and are known by them to be seeking employment or training. This is based on regular contact between SDS and the client. This does not refer to the definition of 'unemployed' used by the Benefits Agency to calculate published unemployment rates.

Unemployed and not seeking employment or training: This category includes all those individuals who are not seeking employment or training for a range of reasons. These individual circumstances may involve sickness, prison, pregnancy, caring for children or other dependents or taking time out.

Section 3.1 Unemployed Seeking

The table provides a comparison of the percentage of unemployed seeking clients with specific characteristics as opposed to the rate of the full SLDR cohort.

Table 20: Client Characteristics

Characteristics	% of Full SLDR	% of Unemployed Seeking
Gender		
Male	50%	50%
Female	50%	50%
Stage Left School		
Statutory Summer Leaver	15%	20%
Statutory Winter Leaver	11%	26%
Post Statutory Leaver	74%	54%
Qualifications on Leaving School^v		
Access 1 / No formal Qualifications	*	*
Access 2&3/Foundation Stand. Grade	4%	13%
General Standard Grade/ Intermediate1	21%	35%
Credit Standard Grade/ Intermediate 2	27%	30%
Highers/Advanced Higher	47%	21%
Unknown	*	*
Health And Additional Support Needs^{vi}		
Looked After at Home/ Looked after away from home ^{vii}	2%	4%
Additional Support Plan Recorded ^{viii}	5%	6%
Health Factor/Additional Support Need Identified ^{ix}	7%	11%

Table 20: Client Characteristics (cont)

Characteristics		% of Full SLDR	% of Unemployed Seeking
SIMD Decile Ranking /Deprivation (SIMD 2009)			
Most deprived	1	3%	6%
	2	15%	21%
	3	15%	16%
	4	14%	16%
	5	9%	8%
	6	8%	9%
	7	10%	7%
	8	5%	5%
	9	9%	5%
Least Deprived	10	11%	6%

- Male leavers account for **50%** of the leaving cohort and also for **50%** of leavers reported as unemployed seeking.
- Statutory winter leavers represent only **11%** of the whole SLDR cohort but are disproportionately represented within the leavers reported as unemployed seeking at **26%**, as are statutory summer leavers with **15%** and **20%** respectively.
- The unemployed seeking leavers who have general level standard grades account for **21%** of the total leavers in 2009 – 10, however they account for **35%** of the unemployed seeking. Leavers who have general level standard grades and below account for a disproportionate level of the unemployed seeking category.
- Leavers who had a period of being looked after at home or away from home are also disproportionately represented within the leavers reported as unemployed seeking as they represent **2%** of the total cohort but account **4%** of the unemployed seeking cohort.

Table 21: Leavers by Intermediate Data zone

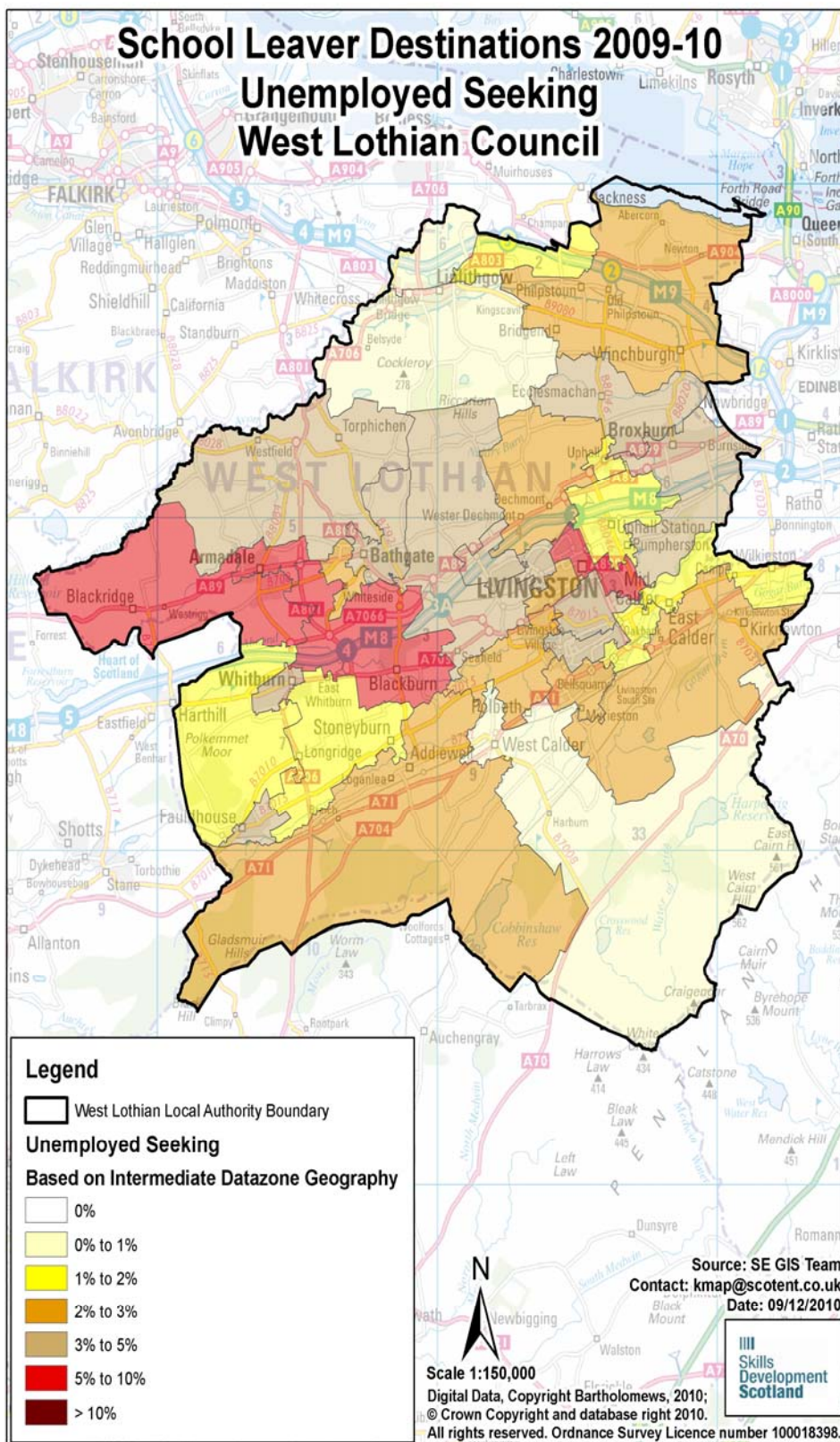
There were **294** leavers from West Lothian schools who were reported as unemployed seeking in the SLDR. By using postcodes, we were able to identify areas within the authority where unemployed school leavers were living. However, at the snapshot, **13** of the leavers were living outside the local authority area but a further **15** unemployed school leavers from other local authority schools were residing within the local authority boundaries. The analysis below is based on **281** leavers residing in the authority and who SDS held postcode information for. The table below shows the intermediate data zones with the highest percentage of unemployed leavers.

Intermediate Data zone ^x	Total	Total Leavers %	Intermediate Data zone	Total	Total Leavers %
Blackridge	18	6%	Starlaw	14	5%
Blackburn	17	6%	Whitburn Central	13	4%
Craigshill	17	6%	Fauldhouse	12	4%
Armadale	16	5%	Bathgate East	11	4%
Knightsridge	16	5%	Broxburn	11	4%
Howden	14	5%	Dedridge	11	4%

Intermediate Data zone areas with less than 5 leavers have been suppressed

Table 22: Destinations of School Leavers: % Unemployed Seeking, 2009/10

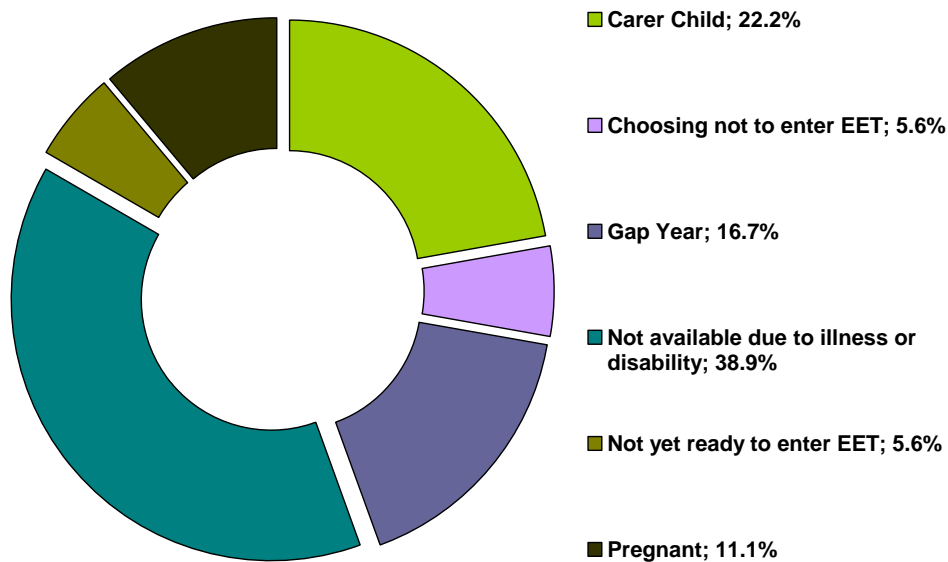
The map shows the intermediate data zones where the 281 leavers who were residing within the local authority boundary reside. Percentages have been calculated as a proportion of the number of leavers reported.



Section 3.2 Unemployed NOT Seeking

There were 18 school leavers within this category.

Table 23: Individual Circumstances of those Unemployed NOT Seeking



Section 3.3 Unknown

There were 3 school leavers whose current destination was unknown at the time of SLDR.

**Skills Development Scotland West Lothian Council School Leaver Destination Report
2009-10**

Table 24: Destinations by School, Percentage

School	Higher Education	Further Education	Training	Employment	Voluntary Work	Unemployed Seeking	Unemployed Not Seeking	Not Known	Total Leavers	% Pos	% Other
Armada Academy	18.5%	22.9%	12.7%	20.4%	0.0%	23.6%	1.3%	0.6%	157	74.5%	25.5%
Bathgate Academy	24.9%	22.2%	7.2%	22.6%	0.5%	21.7%	0.9%	0.0%	221	77.4%	22.6%
Broxburn Academy	26.7%	25.5%	2.5%	27.3%	0.0%	17.4%	0.6%	0.0%	161	82.0%	18.0%
Deans Community High School	21.9%	32.3%	5.8%	19.4%	1.3%	19.4%	0.0%	0.0%	155	80.6%	19.4%
Inveralmond Community High	20.7%	33.6%	9.7%	19.8%	0.0%	15.7%	0.5%	0.0%	217	83.9%	16.1%
Linlithgow Academy	59.5%	16.8%	3.8%	11.4%	0.0%	7.6%	0.5%	0.5%	185	91.4%	8.6%
St Kentigern's Academy	33.7%	22.4%	8.2%	19.9%	0.5%	12.8%	2.0%	0.5%	196	84.7%	15.3%
St Margaret's Academy	44.1%	24.8%	4.3%	16.1%	0.0%	9.3%	1.2%	0.0%	161	89.4%	10.6%
The James Young High School	39.3%	29.8%	4.8%	16.7%	0.0%	9.5%	0.0%	0.0%	168	90.5%	9.5%
West Calder High School	32.9%	30.9%	4.7%	17.4%	0.7%	12.8%	0.7%	0.0%	149	86.6%	13.4%
Whitburn Academy	22.6%	31.3%	9.6%	21.2%	0.0%	13.5%	1.9%	0.0%	208	84.6%	15.4%
West Lothian Council	31.1%	26.5%	6.8%	19.4%	0.3%	14.9%	0.9%	0.2%	1,978	84.1%	15.9%

Background Notes:

ⁱ **Positive Destinations:** includes higher education, further education, training, employment and voluntary work. See text above for explanation of each destination heading.

ⁱⁱ **The Scottish Index of Multiple Deprivation (SIMD):** SIMD identifies small area concentrations of multiple deprivation across all of Scotland in a consistent way. SDS uses a file created by Scottish Neighbourhood Statistics to identify SIMD based on an individual leaver's postcode. The leaver's postcode is based on the last known address of the leaver as recorded on our client management system. Where there were gaps in the data held on our CMS, the last known address supplied in the annual import of pupil details has been used. As the last known postcode is used it may be that a leaver from one local authority was living in another local authority at the time of the return. Therefore, the SIMD relates to where a leaver was living and not the concentration of SIMD within a local authority.

ⁱⁱⁱ **Stage of Leaving:** A **statutory summer leaver** is a school leaver who chooses to leave school at the earliest opportunity (31st May) when they become eligible to leave school i.e. their 16th birthday falls on or between 1st March and 30th September in their year of leaving. A **statutory winter leaver** is a school leaver who chooses to leave school at the earliest opportunity when they become eligible to leave school i.e. their 16th birthday falls between 1st October and the last day in February. A **post statutory leaver** is a school leaver who chose to remain at school past their statutory leave date e.g. a winter leaver who would have been eligible to leave at the winter leave date but choose to remain at school until the summer leave date. Included in this group are leavers who have past their statutory leave date and have left school at any stage throughout the year.

^{iv} **Institutions:** through our follow up of leavers, we confirm Further and Higher Education destinations and as part of the process we request further information about the institution a leaver is attending. This is not a requirement of the Scottish Government and the information displayed is based on the recorded detail on Insight, the SDS

^v **Qualifications on leaving school:** This information is based on pre-appeal information from the Scottish Qualifications Agency where SDS received information about a leaver's qualifications and a robust match of records was made. Where no match was made the qualification level has been gathered through our interaction with individuals.

^{vi} **Qualifications on leaving school:** This information is based on pre-appeal information from the Scottish Qualifications Agency where SDS received information about a leaver's qualifications and a robust match of records was made. Where no match was made the qualification level has been gathered through our interaction with individuals.

^{vii} **Looked After at Home/ Looked after away from home:** This refers to recent school leavers that SDS has recorded information that they had an episode of being looked after at home or looked after away from home. This information is gathered in a variety of ways including local SDS contact with Social Work departments, data received through the school import process or via direct contact with individuals. It is recognised that this information may not be complete when compared with similar data from social work services departments. However SDS is working with the Scottish Government and local authorities to look at improving the sharing of information in respect of these young people therefore the figures used are indicative.

^{viii} **Additional Support Plan Recorded:** SDS receives data from all local authority schools and school centres with pupils in stages S1-S6 or special schools to import into our client management system. We receive information about those who have co-ordinated support plans (CSP) and individualised educational programmes. We also gather information directly from individuals and via our ongoing work with schools. We acknowledge that the data may vary from that held by local authorities therefore the figures used are indicative.

^{ix} **Health Factor/Additional Support Need Identified:** SDS receives data from all local authority schools and school centres with pupils in stages S1-S6 or special schools to import into our client management system. We receive information about those who have identified additional support needs. We also gather information directly from individuals and via our ongoing work with schools. We acknowledge that the data may vary from that held by local authorities therefore the figures used are indicative.

^x **Intermediate Data zone Geography:** The data zone is the key small area statistical geography in Scotland. The intermediate geography is built up from data zones and can be used to disseminate statistics that are not suitable for release at the data zone level. Due to the small number of individuals it has been decided to use the intermediate level geography. There are 1235 intermediate zones in Scotland, containing on average 4000 household residents and these have been designed to respect local authority boundaries as at 2001 Census.