

School Leaver Destination Report

2009 – 2010

Moray Council

Contents

Section 1: Overview – Main Findings	3
<i>Table 1: Destination Totals</i>	<i>4</i>
<i>Table 2: Local Authority Comparison to Scotland</i>	<i>4</i>
Section 1.1 - Annual Trends	5
<i>Table 3: Trends 2000 – 2010 of Positive Destinations</i>	<i>5</i>
<i>Table 4: Trends 2000 – 2010 of Other Destinations</i>	<i>5</i>
<i>Table 5: Destinations from 2000 to 2010</i>	<i>6</i>
Section 1.2: Client Characteristics	6
<i>Table 6: Destination split by Gender</i>	<i>6</i>
<i>Table 7: Gender split within each destination</i>	<i>7</i>
<i>Table 8: Destination by SIMD</i>	<i>7</i>
<i>Table 9: Destination by Stage Left School.</i>	<i>8</i>
Section 2: Positive Destinations	8
Section 2.1 Higher and Further Education	8
<i>Table 10: HE Entrants by Institution Type</i>	<i>9</i>
<i>Table 11: HE Students by Institution.....</i>	<i>9</i>
<i>Table 12: HE Students by FE Colleges</i>	<i>9</i>
<i>Table 13: FE Students by FE Colleges</i>	<i>9</i>
<i>Table 14: Higher Education Course Information</i>	<i>9</i>
<i>Table 15: Further Education Course Information</i>	<i>10</i>
<i>Table 16: Course Information by Gender</i>	<i>10</i>
<i>Table 17: Gender split within the course areas in both FE/HE</i>	<i>11</i>
Section 2.2: Employment.....	11
<i>Table 18: Those entering Employment by Occupational Area</i>	<i>12</i>
<i>Table 19: Gender split within the top employment areas</i>	<i>12</i>
Section 3: Other Destinations	13
Section 3.1 Unemployed Seeking	13
<i>Table 20: Client Characteristics</i>	<i>13</i>
<i>Table 21: Leavers by Intermediate Data zone</i>	<i>15</i>
<i>Table 22: Destinations of School Leavers: % Unemployed Seeking, 2009/10</i>	<i>15</i>
<i>Table 23: Individual Circumstances of those Unemployed NOT Seeking</i>	<i>17</i>
Section 3.3 Unknown	17
<i>Table 24: Destinations by School, Percentage</i>	<i>18</i>
<i>Background Notes:</i>	<i>19</i>

Skills Development Scotland
Moray Council - School Leaver Destination Report 2009-10

Background

The School Leaver Destination Return (SLDR) is a statistical return undertaken by Skills Development Scotland (SDS) on behalf of the Scottish Government. The Return is based on a follow up of young people who left school between the 1st August 2009 and the 31st July 2010. This exercise was carried out during the month of September 2010.

The Scottish Government use the data produced from the Return to report against the National Indicator and target, “increase the proportion of school leavers (from Scottish publicly funded schools) in positive and sustained destinations (FE, HE, employment or training)”. Partners, particularly Local Authorities, use the data to inform initiatives developed as part of the More Choices More Chances Strategy, to evidence the success of initiatives, measure progress against targets, and to identify areas to target resources to improve the post school outcomes for young people.

Methodology

The return is carried out during the month of September with staff across Skills Development Scotland following up over 55,000 school leavers. Destinations are confirmed throughout the follow up period and the destination that is reported is the destination that is known at the snapshot date. This year, we reported the information as known to us on 2nd October 2010. Destinations of young people are fluid in nature, therefore, it is possible that a leaver entered employment or training on leaving school but by the time the snapshot was taken this destination may have changed to another destination.

The information that is gathered is recorded within the SDS CMS system (Insight) which enables us to produce MIS reports and populate the data fields to be sent to the Government. This data is transferred at an individual level and undergoes a matching & validation process until a cohort is agreed. This allows the government’s analytical services unit to match the client’s individual outcome with other indicators such as social economic background, additional support needs and stage of leaving, etc. All information in this report, however, is based upon data held within the SDS Insight database which has been analysed to produce the graphs and tables contained within this report.

Analysis

Only leavers from publicly funded secondary schools are within the scope of the SLDR. This report relates to **1,062** leavers from publicly funded secondary schools. This relates to approximately a **2.4%** increase in the number of leavers reported in the SLDR in 2008-09.

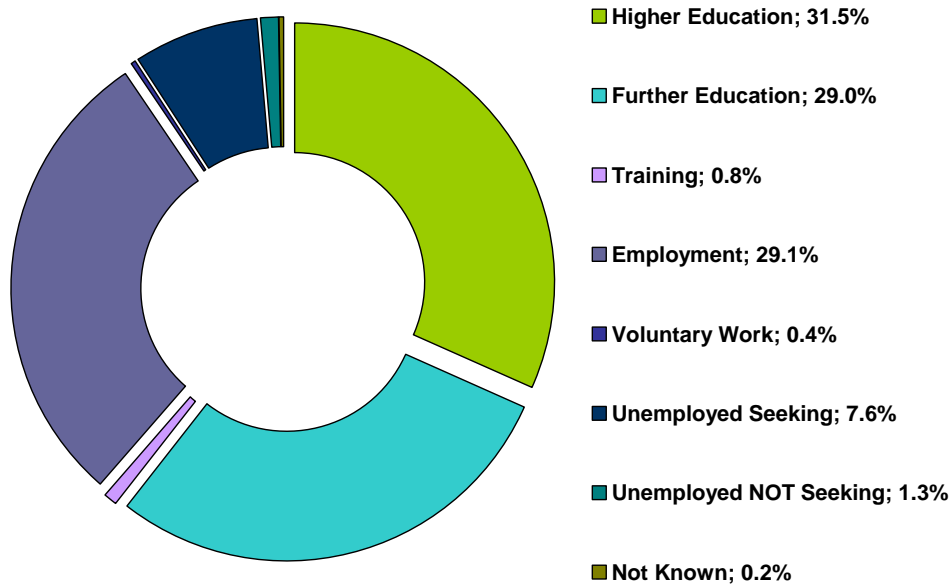
Section 1: Overview – Main Findings

- Overall the percentage of leavers entering a positive destinationⁱ is **90.9%**, an increase from **88.2%** in 2008-09. This is the 6th highest level of positive destinations in Scotland.
- The proportion of leavers entering further and higher education witnessed an increase this year to **60.5%**, an increase of **4%** compared to last year. The percentage of leavers entering higher education has increased by **1.1%** in comparison to last year to **31.5%** but this is below the Scottish average of **35.7%**.
- The percentage of leavers entering further education has also increased since last year to **29%** which is **2%** higher than the Scottish average.
- The percentage of leavers entering employment has decreased since last year from **30.5%** to **29.1%**, **1%** lower than 2008-09. Moray had the second highest level of leavers entering employment in Scotland in 2008-09 and is now the fifth highest in 2009-10. The percentage entering training remains similar to 2008-09 with a slight decrease of **0.1%** from last year to **0.8%**.

Skills Development Scotland Moray Council - School Leaver Destination Report 2009-10

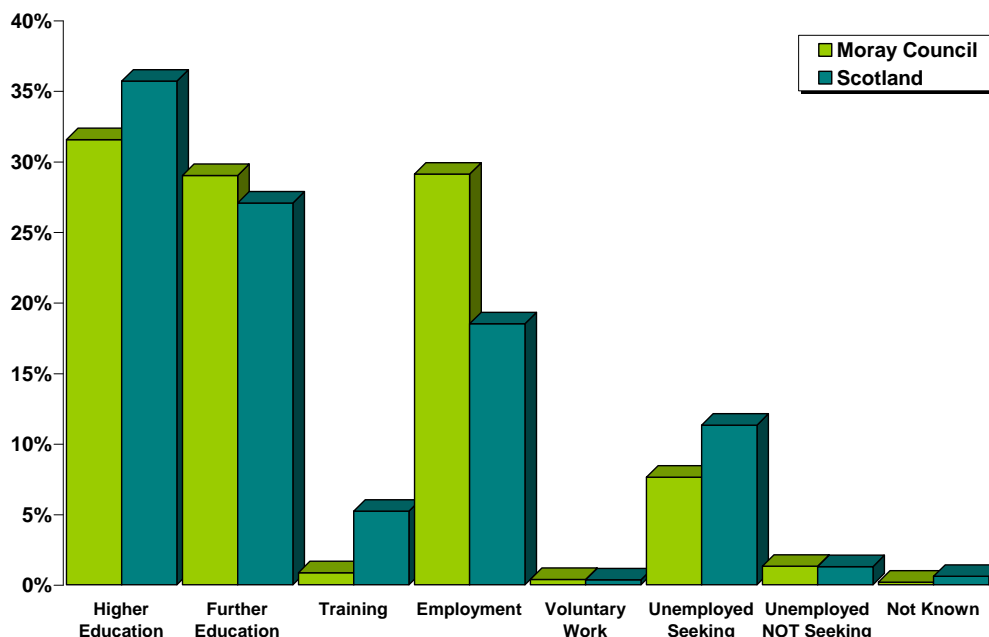
- The percentage of leavers who are unemployed seeking has decrease from **10.1%**, to **7.6%** around **4%** lower than the national average.
- School leavers whose destination is unknown to SDS remains at its lowest recorded level at **0.0%**.

Table 1: Destination Totals



Area	Total Leavers	Higher Education	Further Education	Training	Employment	Voluntary Work	Unemployed Seeking	Unemployed NOT Seeking	Not Known
Moray Council	1,062	31.5% 335	29.0% 308	0.8% 9	29.1% 309	0.4% 4	7.6% 81	1.3% 14	0.2% 2
Scotland	54,097	35.7% 19,309	27.1% 14,637	5.2% 2,822	18.5% 10,005	0.3% 187	11.3% 6,117	1.3% 696	0.6% 324

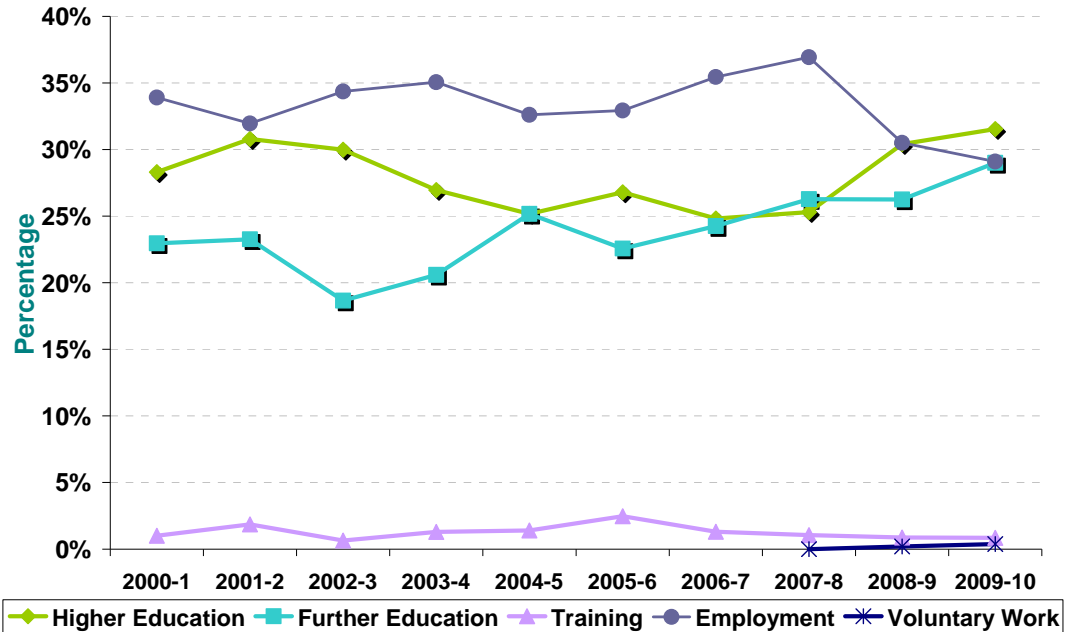
Table 2: Local Authority Comparison to Scotland



**Skills Development Scotland
Moray Council - School Leaver Destination Report 2009-10**

Section 1.1 - Annual Trends

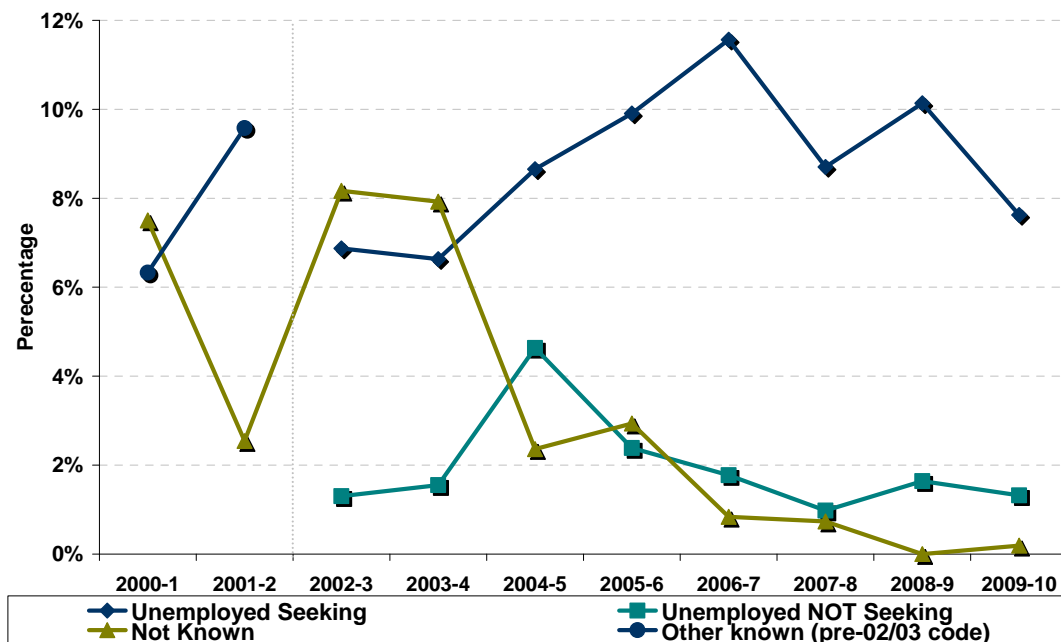
Table 3: Trends 2000 – 2010 of Positive Destinations



Note: Voluntary Work has been included as a separate destination category since the 2007-08 SLDR return but was reported within the unemployed not seeking category previously.

Since falling to its lowest level in 2006-07, the percentage of leavers entering Higher Education has risen to **31.5%** the highest point since 2000-01. The proportion of leavers entering further education continues to rise and is also at its highest point during the last 10 years at **29.0%**. The level of those entering employment appears to show signs of falling from the high point of **36.9%** reported in 2007-08. The percentage entering training continues to remain low at **0.8%**.

Table 4: Trends 2000 – 2010 of Other Destinations



The proportion of leavers reported as unemployed seeking is now at its lowest level since 2004-05 at **7.6%**. The level of unemployed not seeking continues to decrease this year, demonstrating that current policies to encourage the under 20 age group to actively search for working is delivering positive results. The percentage of leavers unknown is **0.2%**.

Skills Development Scotland
Moray Council - School Leaver Destination Report 2009-10

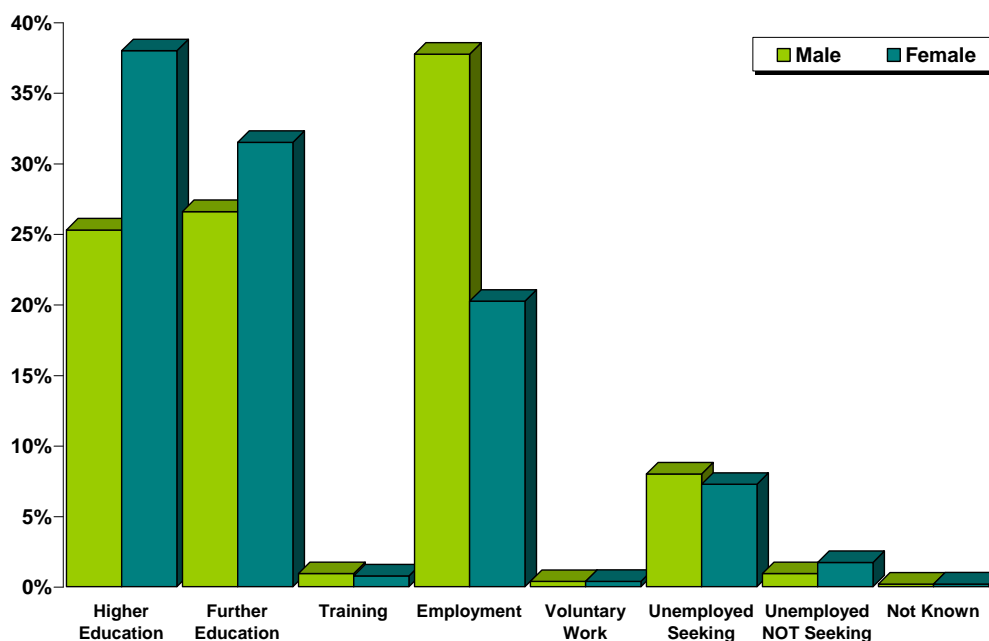
Table 5: Destinations from 2000 to 2010

Year	Total Leavers	Higher Education	Further Education	Training	Employment	Voluntary Work	Unemployed Seeking	Unemployed NOT Seeking	Not Known	Other Known
2000-1	1,106	28.3%	23.0%	1.0%	33.9%				7.5%	6.3%
2001-2	1,023	30.8%	23.3%	1.9%	32.0%				2.5%	9.6%
2002-3	1,077	30.0%	18.7%	0.6%	34.4%		6.9%	1.3%	8.2%	
2003-4	1,161	27.0%	20.6%	1.3%	35.1%		6.6%	1.6%	7.9%	
2004-5	1,144	25.2%	25.2%	1.4%	32.6%		8.7%	4.6%	2.4%	
2005-6	1,090	26.8%	22.6%	2.5%	32.9%		9.9%	2.4%	2.9%	
2006-7	1,072	24.8%	24.3%	1.3%	35.4%		11.6%	1.8%	0.8%	
2007-8	1,229	25.3%	26.3%	1.1%	36.9%	0.0%	8.7%	1.0%	0.7%	
2008-9	1,036	30.4%	26.3%	0.9%	30.5%	0.2%	10.1%	1.6%	0.0%	
2009-10	1,062	31.5%	29.0%	0.8%	29.1%	0.4%	7.6%	1.3%	0.2%	

Note: Prior to 2002-03 both the unemployed seeking and unemployed not seeking categories were reported in a separate category called Other Known. This is reflected in the table and graph above.

Section 1.2: Client Characteristics

Table 6: Destination split by Gender



Year	Total Leavers	Higher Education	Further Education	Training	Employment	Voluntary Work	Unemployed Seeking	Unemployed NOT Seeking	Not Known
Male	538	25.3%	26.6%	0.9%	37.7%	0.4%	8.0%	0.9%	0.2%
Female	524	38.0%	31.5%	0.8%	20.2%	0.4%	7.3%	1.7%	0.2%

Female leavers (**91%**) are just as likely as male leavers (**91%**) to enter positive destinations on leaving school. The proportion of female leavers who continue their education in either higher or further education is higher than that for males, **70%** compared to **52%**. The percentage of males entering employment and training (**39%**) is **18%** higher than that for females (**21%**).

**Skills Development Scotland
Moray Council - School Leaver Destination Report 2009-10**

Table 7: Gender split within each destination

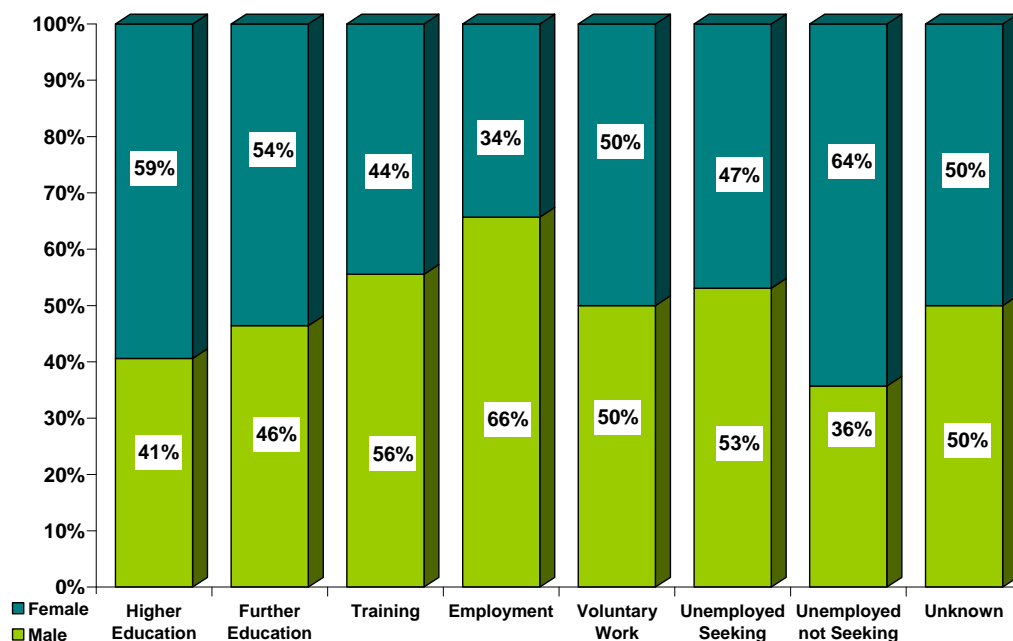


Table 8: Destination by SIMD

SIMD Decile ⁱⁱ	Most Deprived → Least Deprived									
	1	2	3	4	5	6	7	8	9	10
Higher Education	*	13%	14%	18%	27%	34%	38%	32%	38%	48%
Further Education	*	40%	37%	37%	30%	27%	26%	30%	30%	24%
Training	*	0%	7%	0%	1%	0%	1%	0%	0%	0%
Employment	*	27%	19%	35%	32%	27%	31%	27%	29%	24%
Voluntary Work	*	0%	5%	0%	0%	0%	0%	1%	1%	0%
Unemployed Seeking	*	13%	16%	10%	7%	11%	4%	8%	2%	0%
U/E Not Seeking	*	7%	2%	0%	3%	1%	0%	1%	0%	5%
Unknown	*	0%	0%	0%	0%	0%	0%	1%	0%	0%
Positive Destinations	*	80%	81%	90%	90%	88%	95%	90%	98%	95%
Total	0	30	43	68	187	245	266	111	90	21
% of Total Leavers	*	3%	4%	6%	18%	23%	25%	10%	8%	2%

Percentages based on 5 or less have been suppressed due to disclosure reasons.

- Leavers who live in the least deprived areas are more likely to enter positive destinations on leaving school than those from the most deprived area. For example **95%** of those who live in SIMD 10 enter positive destinations whereas **80%** of those in SIMD 2 enter positive destinations. The percentage of positive destinations rise as you move through the SIMD areas from 1 – 10.
- The majority of leavers from every SIMD area continued their studies in further or higher education. The greatest proportion of leavers, from SIMD 1 to 5, continued their studies in further education and those from SIMD 6 to 10 continued their studies in higher education. In general leavers who live in the least deprived areas are more likely to enter Higher Education in comparison to leavers who live in the most deprived areas. The proportion of leavers entering higher education from the least deprived area (**48%**) is over three times the proportion for leavers from the most deprived areas (**13%**).

Skills Development Scotland
Moray Council - School Leaver Destination Report 2009-10

- Leavers from most deprived areas are more likely to enter employment than leavers from the least deprived areas.
- Leavers from most deprived areas are more likely to be unemployed seeking than leavers from the least deprived areas. The proportion of leavers who become unemployed gradually decreases as you move through the SIMD areas from **13%** in SIMD 2 to **0%** in SIMD 10.

Table 9: Destination by Stage Left School.

Stage of Leaving ⁱⁱⁱ Destination	Statutory Summer Leaver	Statutory Winter Leaver	Post Statutory Leaver
Higher Education	0%	4%	41%
Further Education	44%	24%	26%
Training	3%	2%	0%
Employment	35%	39%	27%
Voluntary Work	0%	0%	0%
Unemployed Seeking	14%	29%	4%
Unemployed Not Seeking	3%	2%	1%
Unknown	1%	0%	0%
Positive Destinations	81%	69%	95%
Total Leavers	177	83	802
% of Total Leavers	17%	8%	76%

Data & percentages based on less than 5 leavers have been suppressed due to disclosure and quality reasons.

- It can be noted that the majority of school pupils choose to remain at school past their statutory leave date (**76%**) and this has a positive impact on their positive progression from school. Leavers who stay on past their statutory leave date are more likely to progress to positive outcomes on leaving school (**95%**) with the highest proportion entering higher education (**41%**).
- Statutory winter leavers are less likely to enter positive destinations (**69%**). However, the highest proportion is in employment (**39%**). Statutory winter leavers are just over seven times more likely to be reported as unemployed seeking than a post statutory leaver.
- The majority of statutory summer leavers enter further education (**44%**) and just over 1 in 7 statutory summer leavers are reported as unemployed seeking.

Section 2: Positive Destinations

Section 2.1 Higher and Further Education

Higher Education (HE): This category includes leavers following HND (Higher National Diploma) or HNC (Higher National Certificate) courses, degree courses, courses for the education and training of teachers and higher level courses for professional qualifications. **8** young people with a deferred, unconditional place in higher education for next year have also been included in this year's figures.

Further Education (FE): This category includes leavers undertaking non advanced further education which is not higher education.

From those reported in the SLDR, **335** leavers entered Higher Education and **308** entered Further Education. Detailed analysis can be provided for **100%** of this cohort for whom we hold information on institution and course chosen.

Skills Development Scotland
Moray Council - School Leaver Destination Report 2009-10

Table 10: HE Entrants by Institution Type

Institution Type	Total	%
University / HE College	216	64%
FE College	111	33%
Other ¹	8	2%

¹ Other Category includes institutions out with Scotland and other private institutions

Table 11: HE Students by Institution

Institution^{iv}	Total	%	Institution	Total	%
The Robert Gordon University	75	22%	Stirling University	10	3%
Aberdeen University	36	11%	Abertay University Dundee	6	2%
Edinburgh University	19	6%	Heriot Watt University	5	1%
Glasgow University	16	5%	Outwith Scotland	7	2%
Strathclyde University	16	5%	Other Institutions	20	6%
Napier University	13	4%	FE Colleges	111	33%

Institutions with less than 5 leavers are included in "Other Institutions" in the table above.

Table 12: HE Students by FE Colleges

Institution	Total	%	Institution	Total	%
Moray College	80	24%	Other Institutions	10	3%
Aberdeen College	22	7%			

Institutions with less than 5 leavers are included in "Other Institutions" in the table above.

Table 13: FE Students by FE Colleges

Institution	Total	%	Institution	Total	%
Moray College	252	82%	Banff and Buchan College	5	2%
Aberdeen College	19	6%	Other Institutions	15	13%
Inverness College	17	6%			

Institutions with less than 5 leavers are included in "Other Institutions" in the table above.

It can be noted from tables 11, 12 & 13 that the majority of leavers who continue their studies post school, chose to attend local institutions.

Table 14: Higher Education Course Information

Course Area	Total	%	Course Area	Total	%
Arts & Social Sciences	49	15%	Sport, Leisure & Sport Science	14	4%
Science & Mathematics	40	12%	Art and Design	13	4%
Health & Medicine	36	11%	Hospitality, Catering & Tourism	13	4%
Engineering	33	10%	Performing Arts	11	3%
Admin, Management & Business	29	9%	Finance	8	2%
Construction	19	6%	Teaching	8	2%
Computing & ICT	18	5%	Communications & Media	7	2%
Social, Caring & Advisory Services	15	4%	Animals, Land & Environment	4	1%
Law	14	4%	Languages	4	1%

Skills Development Scotland
Moray Council - School Leaver Destination Report 2009-10

Table 15: Further Education Course Information

Course Area	Total	%	Course Area	Total	%
General Education (Highers, etc)	39	13%	Computing & ICT	15	5%
Hairdressing & Beauty	36	12%	Admin, Management & Business	15	5%
Social, Caring & Advisory Services	33	11%	Construction	11	4%
Engineering	31	10%	Animals, Land & Environment	10	3%
Hospitality, Catering & Tourism	24	8%	Communications & Media	4	1%
Art and Design	23	7%	Arts & Social Sciences	4	1%
Personal & Social Dev Courses	20	6%	Garage Services	3	1%
Sport, Leisure & Sport Science	16	5%	Law	1	0%

This is the 3rd year that SDS has gathered fuller data, across Scotland, about the course areas entered by school leavers. It shows that Arts & Social Sciences, Science & Mathematics and Health & Medicine based subjects are the most popular for those entering higher education.

Within further education, leavers studying vocational subjects such as General Education (Highers, etc), Hairdressing & Beauty, and Social, Caring & Advisory Services are the most popular choices.

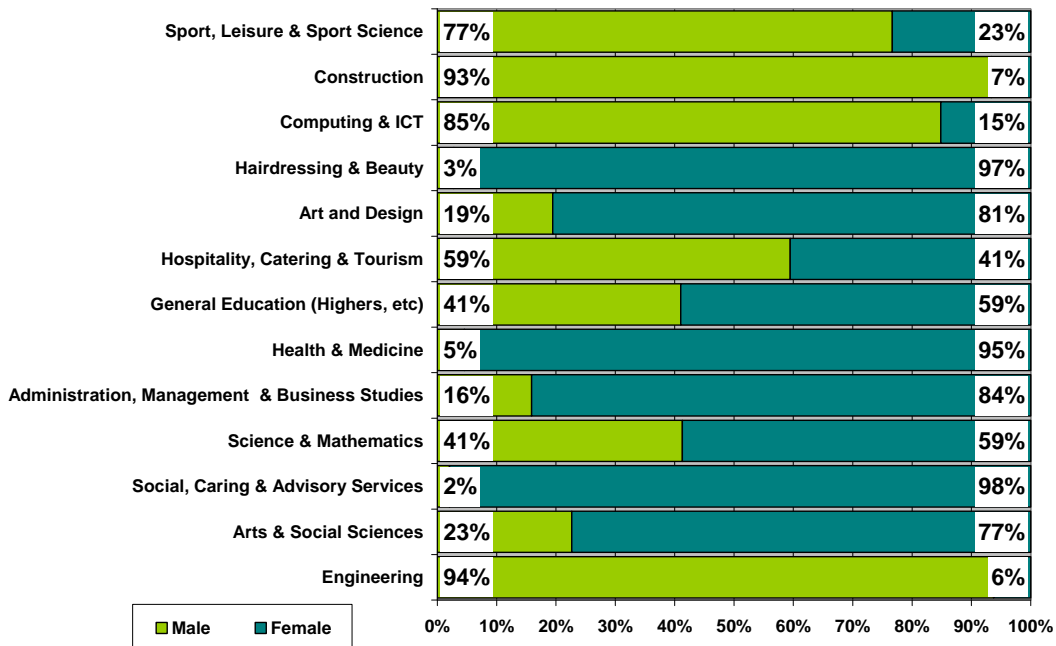
Table 16: Course Information by Gender

Course Area	Male		Female	
	Total	%	Total	%
Engineering	60	22%	4	1%
Arts & Social Sciences	12	4%	41	11%
Social, Caring & Advisory Services	*	0%	47	13%
Science & Mathematics	19	7%	27	7%
Administration, Management & Business Studies	7	3%	37	10%
Health & Medicine	*	1%	42	12%
General Education (Highers, etc)	16	6%	23	6%
Hospitality, Catering & Tourism	22	8%	15	4%
Art and Design	7	3%	29	8%
Hairdressing & Beauty	*	0%	35	10%
Computing & ICT	28	10%	5	1%
Construction	28	10%	*	1%
Sport, Leisure & Sport Science	23	8%	7	2%
Personal & Social Dev Courses	14	5%	6	2%
Performing Arts	8	3%	12	3%
Law	5	2%	10	3%
Animals, Land & Environment	11	4%	*	1%
Communications & Media	6	2%	5	1%
Finance	5	2%	*	1%
Languages	*	0%	*	1%
Garage Services	*	1%	*	0%
Teaching	*	0%	8	2%

*Courses with less than 5 leavers have been suppressed

Skills Development Scotland
Moray Council - School Leaver Destination Report 2009-10

Table 17: Gender split within the course areas in both FE/HE



The top 3 course areas for male leavers, this year are the same as last year albeit there has been a slight change in the order. Engineering is the first choice (22%), with Construction and Computing & ICT courses in joint second place (10%).

The top 3 most popular course area for female leavers are Social and Caring related courses (13%), followed closely by Health & Medicine (12%), and Arts & Social Sciences (11%).

Section 2.2: Employment

Employment: This category includes those who are employed and who are in receipt of payment from their employers. It includes young people undertaking training in employment through Skillseekers and Modern Apprenticeships. 309 young people entered employment and analysis can be provided on all of those entering employment for whom we hold information about the occupational area entered.

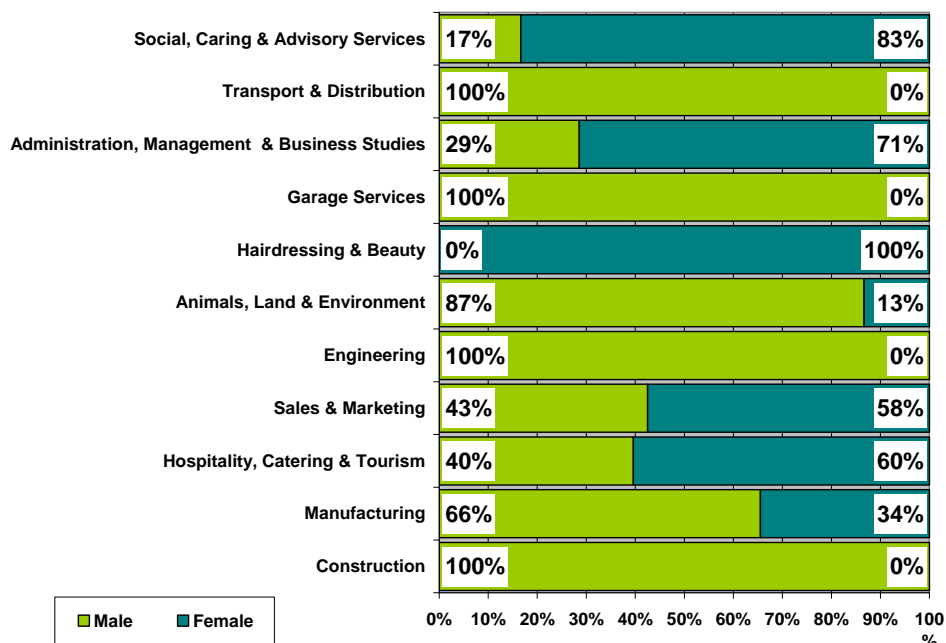
Skills Development Scotland
Moray Council - School Leaver Destination Report 2009-10

Table 18: Those entering Employment by Occupational Area

Occupational Area	Male		Female	
	Total	%	Total	%
Construction	61	30%	0	0%
Manufacturing	38	19%	20	19%
Hospitality, Catering & Tourism	21	10%	32	30%
Sales & Marketing	17	8%	23	22%
Engineering	29	14%	0	0%
Animals, Land & Environment	13	6%	2	2%
Hairdressing & Beauty	0	0%	15	14%
Garage Services	8	4%	0	0%
Administration, Management & Business Studies	2	1%	5	5%
Transport & Distribution	7	3%	0	0%
Social, Caring & Advisory Services	1	0%	5	5%
Security & Protective Services	4	2%	0	0%
Finance	0	0%	2	2%
Health & Medicine	0	0%	1	1%
Laboratory technician	0	0%	1	1%
Performing Arts	1	0%	0	0%
Sport, Leisure & Sport Science	1	0%	0	0%

*Occupational areas with less than 5 leavers have been suppressed

Table 19: Gender split within the top employment areas



The most popular area of employment entered by all school leavers continues to be construction although this is dominated by males. Manufacturing and hospitality catering & tourism are the next most popular employment areas.

As mention there is still a gender bias in the occupational areas of construction; engineering and manufacturing services with the majority of entrants being male whereas hospitality, catering and tourism, sales and marketing roles remain mainly female dominated.

Section 3: Other Destinations

School leavers who do not achieve a positive destination on leaving school are known as the MCMC group and are key customers for Skills Development Scotland and our partner organisations. The SLDR is a snapshot in time and should only be used as an indicator.

Unemployed and seeking employment or training: This category includes those who are in contact with SDS and are known by them to be seeking employment or training. This is based on regular contact between SDS and the client. This does not refer to the definition of 'unemployed' used by the Benefits Agency to calculate published unemployment rates. In 2009-10 it also included those individuals undertaking personal skills development^v (1)

Unemployed and not seeking employment or training: This category includes all those individuals who are not seeking employment or training for a range of reasons. These individual circumstances may involve sickness, prison, pregnancy, caring for children or other dependents or taking time out.

Section 3.1 Unemployed Seeking

The table provides a comparison of the percentage of unemployed seeking clients with specific characteristics as opposed to the rate of the full SLDR cohort.

Table 20: Client Characteristics

Characteristics	% of Full SLDR	% of Unemployed Seeking
Gender		
Male	51%	53%
Female	49%	47%
Stage Left School		
Statutory Summer Leaver	17%	31%
Statutory Winter Leaver	8%	30%
Post Statutory Leaver	76%	40%
Qualifications on Leaving School^{vi}		
Access 1 / No formal Qualifications	1%	7%
Access 2&3/Foundation Stand. Grade	2%	7%
General Standard Grade/ Intermediate 1	14%	31%
Credit Standard Grade/ Intermediate 2	33%	37%
Highers/Advanced Higher	49%	15%
Unknown	1%	2%
Health And Additional Support Needs^{vii}		
Looked After at Home/ Looked after away from home ^{viii}	3%	16%
Additional Support Plan Recorded ^{ix}	8%	12%
Health Factor/Additional Support Need Identified ^x	19%	25%

Skills Development Scotland
Moray Council - School Leaver Destination Report 2009-10

Table 20: Client Characteristics (cont)

Characteristics		% of Full SLDR	% of Unemployed Seeking
SIMD Decile Ranking /Deprivation (SIMD 2009)			
Most deprived	1	0%	0%
	2	3%	5%
	3	4%	9%
	4	6%	9%
	5	18%	17%
	6	23%	33%
	7	25%	14%
	8	10%	11%
	9	8%	2%
Least Deprived	10	2%	0%
	Unknown	0%	0%

Data & percentages based on less than 5 leavers have been suppressed due to disclosure and quality reasons.

- Male leavers account for **51%** of the leaving cohort, however, they account for **53%** of leavers reported as unemployed seeking.
- Statutory summer leavers represent only **17%** of the whole SLDR cohort but are disproportionately represented within the leavers reported as unemployed seeking at **31%**. A similar situation is evident for statutory winter leavers with **8%** and **30%** respectively.
- The largest proportion of unemployed seeking leavers have credit level standard grades (**37%**). Those with general level and below represent **17%** of the SLDR cohort; however, they are disproportionately represented in the unemployed seeking cohort at **45%**.
- Leavers who had a period of being looked after at home or away from home are also disproportionately represented within the leavers reported as unemployed seeking as they represent **3%** of the total cohort but account **16%** of the unemployed seeking cohort.
- Likewise having an additional support plan or additional support needs is also an indicator that you may be disproportionately represented in the unemployed seeking cohort

Skills Development Scotland
Moray Council - School Leaver Destination Report 2009-10

Table 21: Leavers by Intermediate Data zone

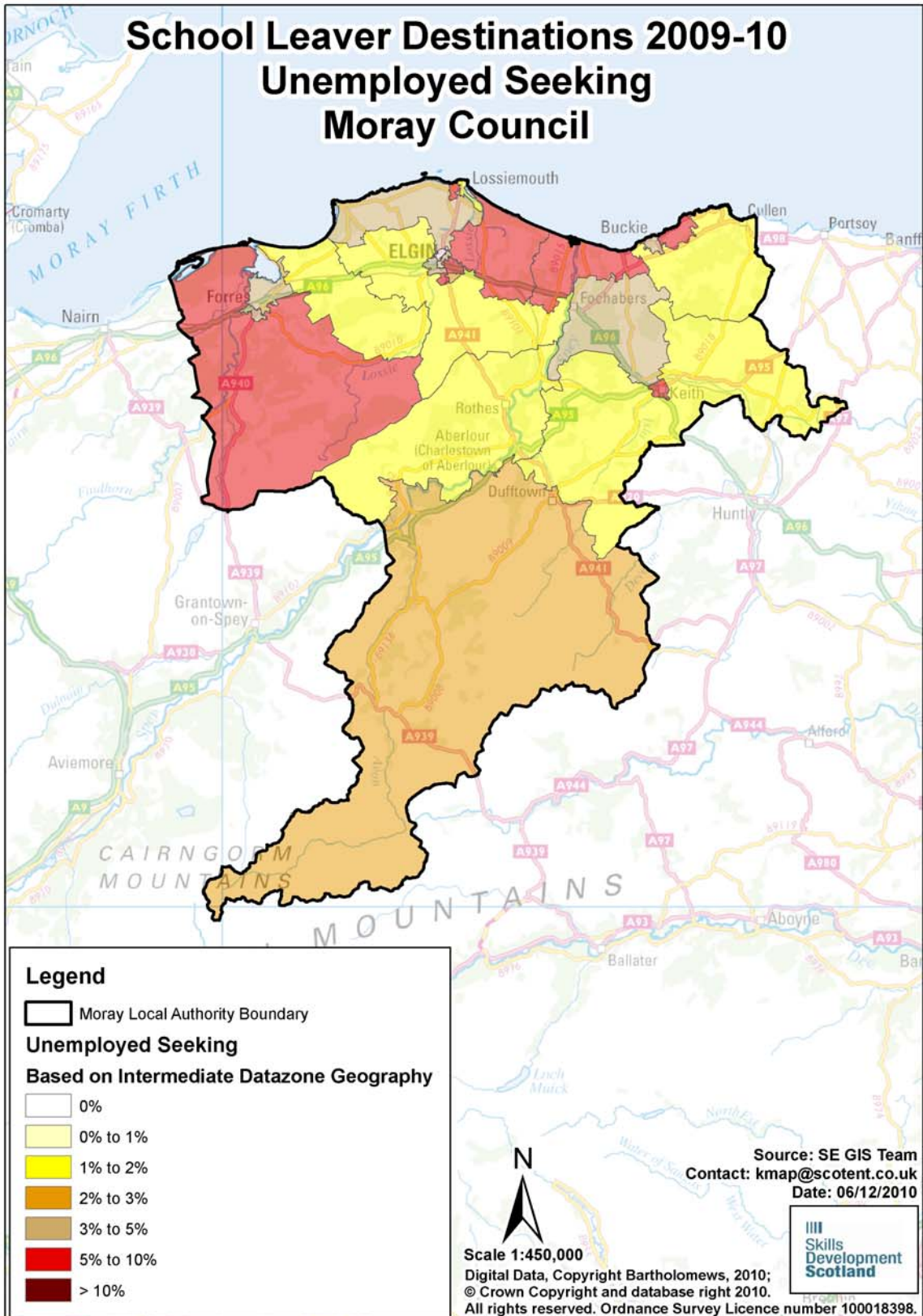
There were **81** leavers from Moray secondary schools who were reported as unemployed seeking in the SLDR. However, at the snapshot, **1** of the leavers was living outside the local authority area but a further **3** unemployed seeking school leavers from other local authority schools were residing within the local authority boundary. The analysis below is based on **83** leavers residing in the authority and who SDS held postcode information for. The table below shows the intermediate data zones with the highest percentage of unemployed leavers.

Intermediate Data zone ^{xi}	Total	%	Intermediate Data zone	Total	%
Lhanbryde, Urquhart, Pitgavney & seaward	7	8%	New Elgin West	6	7%
Lossiemouth West	7	8%	Rafford, Dallas, Dyke to Dava	6	7%
Elgin Cathedral to Ashgrove & Pinefield	6	7%	Buckie Central East	5	6%
Keith and Fife Keith	6	7%	Mosstodloch, Portgordon & seaward	5	6%

Intermediate Data zone areas with less than 5 leavers have been suppressed

Table 22: Destinations of School Leavers: % Unemployed Seeking, 2009/10

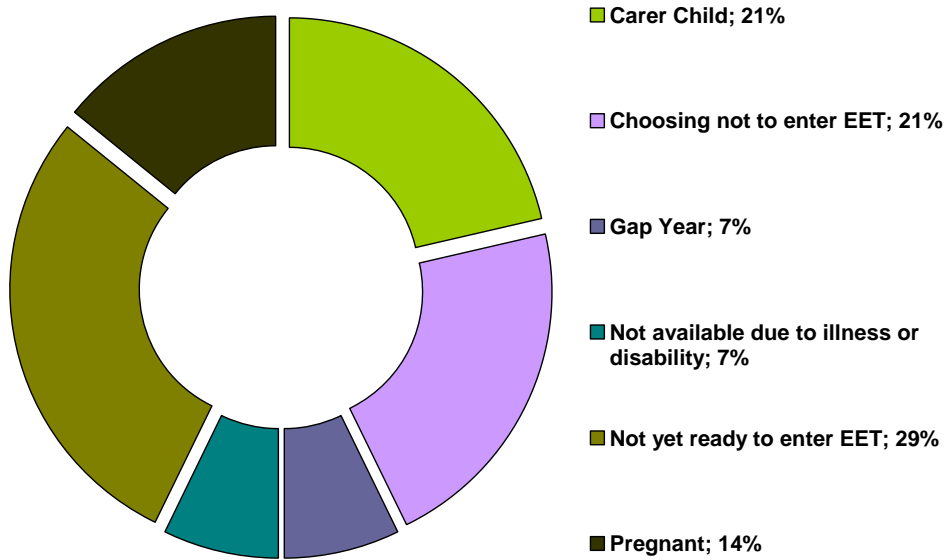
The map shows the intermediate data zones where the **83** leavers who were residing within the local authority boundary reside. Percentages have been calculated as a proportion of the number of leavers reported



Section 3.2 Unemployed NOT Seeking

There were **14** school leavers within this category.

Table 23: Individual Circumstances of those Unemployed NOT Seeking



Section 3.3 Unknown

There were **2** school leavers whose current destination was unknown at the time of SLDR.

Skills Development Scotland
Moray Council - School Leaver Destination Report 2009-10

Table 24: Destinations by School, Percentage

School	Higher Education	Further Education	Training	Employment	Voluntary Work	Unemployed Seeking	Unemployed Not Seeking	Not Known	Total Leavers	% Pos	% Other
Buckie Community High School	34.0%	29.0%	1.9%	27.2%	0.0%	7.4%	0.6%	0.0%	162	92.0%	8.0%
Elgin Academy	33.7%	25.9%	0.6%	30.7%	0.6%	6.0%	2.4%	0.0%	166	91.6%	8.4%
Elgin High School	21.9%	37.1%	0.0%	31.8%	0.0%	7.9%	1.3%	0.0%	151	90.7%	9.3%
Forres Academy	32.9%	29.3%	1.2%	24.4%	1.2%	7.9%	2.4%	0.6%	164	89.0%	11.0%
Keith Grammar School	34.4%	24.7%	0.0%	35.5%	0.0%	4.3%	1.1%	0.0%	93	94.6%	5.4%
Lossiemouth High School	33.6%	27.7%	0.0%	28.6%	0.8%	8.4%	0.0%	0.8%	119	90.8%	9.2%
Milne's High School	31.8%	30.8%	1.9%	19.6%	0.0%	15.0%	0.9%	0.0%	107	84.1%	15.9%
Speyside High School	31.0%	25.0%	1.0%	38.0%	0.0%	4.0%	1.0%	0.0%	100	95.0%	5.0%
Moray Council	31.5%	29.0%	0.8%	29.1%	0.4%	7.6%	1.3%	0.2%	1,062	90.9%	9.1%

Background Notes:

- ⁱ **Positive Destinations:** includes higher education, further education, training, employment and voluntary work. See text above for explanation of each destination heading.
- ⁱⁱ **The Scottish Index of Multiple Deprivation (SIMD):** SIMD identifies small area concentrations of multiple deprivation across all of Scotland in a consistent way. SDS uses a file created by Scottish Neighbourhood Statistics to identify SIMD based on an individual leaver's postcode. The leaver's postcode is based on the last known address of the leaver as recorded on our client management system. Where there were gaps in the data held on our CMS, the last known address supplied in the annual import of pupil details has been used. As the last known postcode is used it may be that a leaver from one local authority was living in another local authority at the time of the return. Therefore, the SIMD relates to where a leaver was living and not the concentration of SIMD within a local authority.
- ⁱⁱⁱ **Stage of Leaving:** A **statutory summer leaver** is a school leaver who chooses to leave school at the earliest opportunity (31st May) when they become eligible to leave school i.e. their 16th birthday falls on or between 1st March and 30th September in their year of leaving. A **statutory winter leaver** is a school leaver who chooses to leave school at the earliest opportunity when they become eligible to leave school i.e. their 16th birthday falls between 1st October and the last day in February. A **post statutory leaver** is a school leaver who chose to remain at school past their statutory leave date e.g. a winter leaver who would have been eligible to leave at the winter leave date but choose to remain at school until the summer leave date. Included in this group are leavers who have past their statutory leave date and have left school at any stage throughout the year.
- ^{iv} **Institutions:** through our follow up of leavers, we confirm Further and Higher Education destinations and as part of the process we request further information about the institution a leaver is attending. This is not a requirement of the Scottish Government and the information displayed is based on the recorded detail on Insight, the SDS
- ^v **Personal Skills Development:** - Some leavers are not yet ready, or in a position to make an immediate transition to a formal positive destination. In such cases leavers may participate in learning opportunities / personal and social development activities with the aim of improving their confidence and employability. These programmes can be viewed as a stepping stone towards a more formal positive destination. They are often delivered by a community learning and development or third sector organisation and can include the activity agreement pilots. It was agreed, with the Scottish Government, that individuals undertaking these activities would be reported within the unemployed seeking SLDR category.
- ^{vi} **Qualifications on leaving school:** This information is based on pre-appeal information from the Scottish Qualifications Agency where SDS received information about a leaver's qualifications and a robust match of records was made. Where no match was made the qualification level has been gathered through our interaction with individuals.
- ^{vii} **Qualifications on leaving school:** This information is based on pre-appeal information from the Scottish Qualifications Agency where SDS received information about a leaver's qualifications and a robust match of records was made. Where no match was made the qualification level has been gathered through our interaction with individuals.
- ^{viii} **Looked After at Home/ Looked after away from home:** This refers to recent school leavers that SDS has recorded information that they had an episode of being looked after at home or looked after away from home. This information is gathered in a variety of ways including local SDS contact with Social Work departments, data received through the school import process or via direct contact with individuals. It is recognised that this information may not be complete when compared with similar data from social work services departments. However SDS is working with the Scottish Government and local authorities to look at improving the sharing of information in respect of these young people therefore the figures used are indicative.
- ^{ix} **Additional Support Plan Recorded:** SDS receives data from all local authority schools and school centres with pupils in stages S1-S6 or special schools to import into our client management system. We receive information about those who have co-ordinated support plans (CSP) and individualised educational programmes. We also gather information directly from individuals and via our ongoing work with schools. We acknowledge that the data may vary from that held by local authorities therefore the figures used are indicative.
- ^x **Health Factor/Additional Support Need Identified:** SDS receives data from all local authority schools and school centres with pupils in stages S1-S6 or special schools to import into our client management system. We receive information about those who have identified additional support needs. We also gather information directly from individuals and via our ongoing work with schools. We acknowledge that the data may vary from that held by local authorities therefore the figures used are indicative.

Skills Development Scotland
Moray Council - School Leaver Destination Report 2009-10

^{xi}**Intermediate Data zone Geography:** The data zone is the key small area statistical geography in Scotland. The intermediate geography is built up from data zones and can be used to disseminate statistics that are not suitable for release at the data zone level. Due to the small number of individuals it has been decided to use the intermediate level geography. There are 1235 intermediate zones in Scotland, containing on average 4000 household residents and these have been designed to respect local authority boundaries as at 2001 Census.