

School Leaver Destination Report

2009 – 2010

Midlothian Council

Contents

Section 1: Overview – Main Findings	3
<i>Table 1: Destination Totals</i>	4
<i>Table 2: Local Authority Comparison to Scotland</i>	5
Section 1.1 - Annual Trends	5
<i>Table 3: Trends 2000 – 2010 of Positive Destinations</i>	5
<i>Table 4: Trends 2000 – 2010 of Other Destinations</i>	6
<i>Table 5: Destinations from 2000 to 2010</i>	6
Section 1.2: Client Characteristics	7
<i>Table 6: Destination split by Gender</i>	7
Section 2: Positive Destinations	9
Section 2.1 Higher and Further Education	9
<i>Table 10: HE Entrants by Institution Type</i>	9
<i>Table 11: HE Students by Institution</i>	9
<i>Table 12: HE Students by FE Colleges</i>	9
<i>Table 13: FE Students by FE Colleges</i>	10
<i>Table 14: Higher Education Course Information</i>	10
<i>Table 15: Further Education Course Information</i>	10
<i>Table 16: Course Information by Gender</i>	11
<i>Table 17: Gender split within the course areas in both FE/HE</i> 11	
Section 2.2: Employment	12
<i>Table 18: Those entering Employment by Occupational Area</i>	12
<i>Table 19: Gender split within the top employment areas</i>	12
Section 3: Other Destinations	13
Section 3.1 Unemployed Seeking	13
<i>Table 20: Client Characteristics</i>	13
<i>Table 21: Leavers by Intermediate Data zone</i>	14
<i>Table 22: Destinations of School Leavers: % Unemployed Seeking, 2009/10</i>	15
Section 3.2 Unemployed NOT Seeking	16
<i>Table 23: Individual Circumstances of those Unemployed NOT Seeking</i>	16
Section 3.3 Unknown	16
<i>Table 24: Destinations by School, Percentage</i>	17
<i>Background Notes:</i>	18

Skills Development Scotland
Midlothian Council School Leaver Destination Report 2009-10

Background

The School Leaver Destination Return (SLDR) is a statistical return undertaken by Skills Development Scotland (SDS) on behalf of the Scottish Government. The Return is based on a follow up of young people who left school between the 1st of August 2009 and the 31st of July 2010. This exercise was carried out during the month of September 2010.

The Scottish Government use the data produced from the Return to report against the National Indicator and target, “increase the proportion of school leavers (from Scottish publicly funded schools) in positive and sustained destinations (FE, HE, employment or training)”. Partners, particularly Local Authorities, use the data to inform initiatives developed as part of the More Choices More Chances Strategy, to evidence the success of initiatives, measure progress against targets, and to identify areas to target resources to improve the post school outcomes for young people.

Methodology

The return is carried out during the month of September with staff across Skills Development Scotland following up over 55,000 school leavers. Destinations are confirmed throughout the follow up period and the destination that is reported is the destination that is known at the snapshot date. This year, we reported the information as known to us on 2nd October 2010. Destinations of young people are fluid in nature, therefore, it is possible that a leaver entered employment or training on leaving school but by the time the snapshot was taken this destination may have changed to another destination.

The information that is gathered is recorded within the SDS CMS system (Insight) which enables us to produce MIS reports and populate the data fields to be sent to the Government. This data is transferred at an individual level and undergoes a matching & validation process until a cohort is agreed. This allows the government’s analytical services unit to match the client’s individual outcome with other indicators such as social economic background, additional support needs and stage of leaving, etc. All information in this report, however, is based upon data held within the SDS Insight database which has been analysed to produce the graphs and tables contained within this report.

Analysis

Only leavers from publicly funded secondary schools are within the scope of the SLDR. This report relates to **950** leavers from publicly funded secondary schools. This relates to an increase of only **3** more leavers this year in comparison to the SLDR in 2008-09.

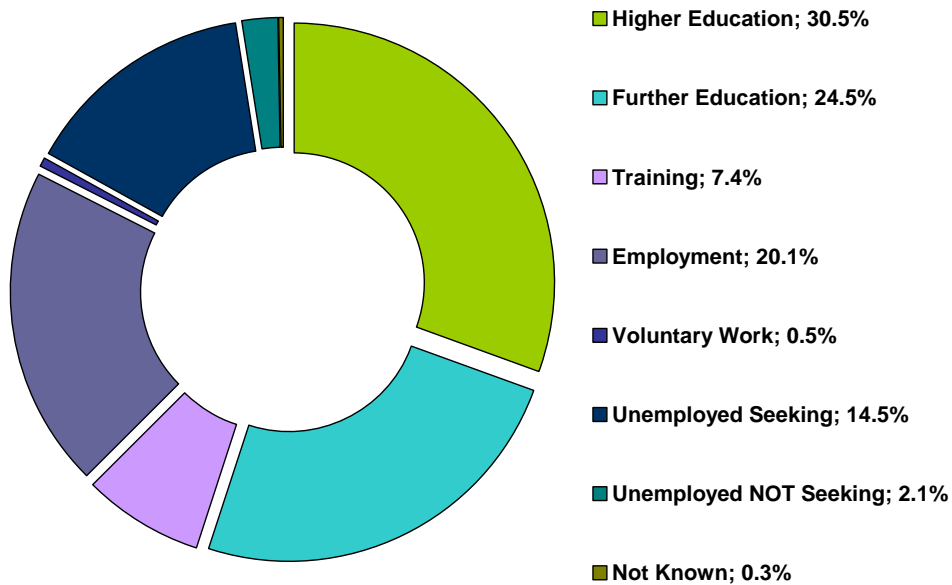
Section 1: Overview – Main Findings

- Overall the percentage of leavers entering a positive destinationⁱ is **83.1%**, a rise of **4.7%** on last year. This rise is the 3rd highest rise in positive destinations in Scotland, although, Midlothian Council has the second lowest level of positive destinations.
- The percentage of leavers entering further and higher education increased to **55%**, which was a **0.7%** rise on last year. The percentage of leavers entering higher education has fallen by **1.2 %** since last year to **30.5%** which is the third lowest in Scotland. Despite this, in Midlothian, the proportion of leavers entering higher education has risen by **5%** since 2000-01.
- The percentage of leavers entering Further Education rose by almost **2%** to **24.5%** but this is **2.6%** below the Scottish level (**27.1%**). There has, however, been a rise of just over **10%** in the number of leavers entering Further Education since 2000 -01.
- The percentage of leavers entering Employment has increased since last year from **19.2%** to **20.1%**, however, in 2008-9 there was a significant drop of almost **10%** in the number entering employment, and there has been an overall **16.8%** drop since 2000- 01.

Skills Development Scotland
Midlothian Council School Leaver Destination Report 2009-10

- The percentage entering training has increased by **2.9%** from last year to **7.4%**. This rise in training is the second highest increase in Scotland and means Midlothian has the 7th highest level of leavers in training, in Scotland. By comparison, the percentage of leavers entering training in 2005 – 06 was **2.1%** and it is now 3½ times this rate.
- The percentage of leavers who are Unemployed Seeking has fallen to **14.5%** from **18.9%** in 2008-09. Midlothian has witnessed the 2nd highest decrease in leavers being reported as unemployed seeking (**-4.4%**).
- School leavers whose destination is Unknown to SDS has fallen to its lowest recorded level at **0.3%**.

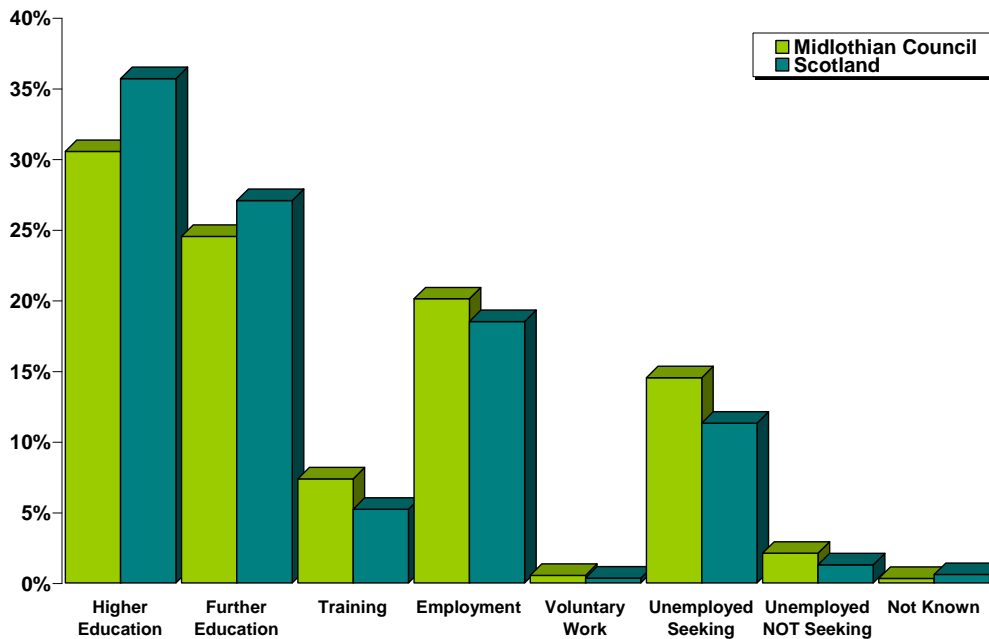
Table 1: Destination Totals



Area	Total Leavers	Higher Education	Further Education	Training	Employment	Voluntary Work	Unemployed Seeking	Unemployed NOT Seeking	Not Known
Midlothian Council	950	30.5% 290	24.5% 233	7.4% 70	20.1% 191	0.5% 5	14.5% 138	2.1% 20	0.3% 3
Scotland	54,097	35.7% 19,309	27.1% 14,637	5.2% 2,822	18.5% 10,005	0.3% 187	11.3% 6,117	1.3% 696	0.6% 324

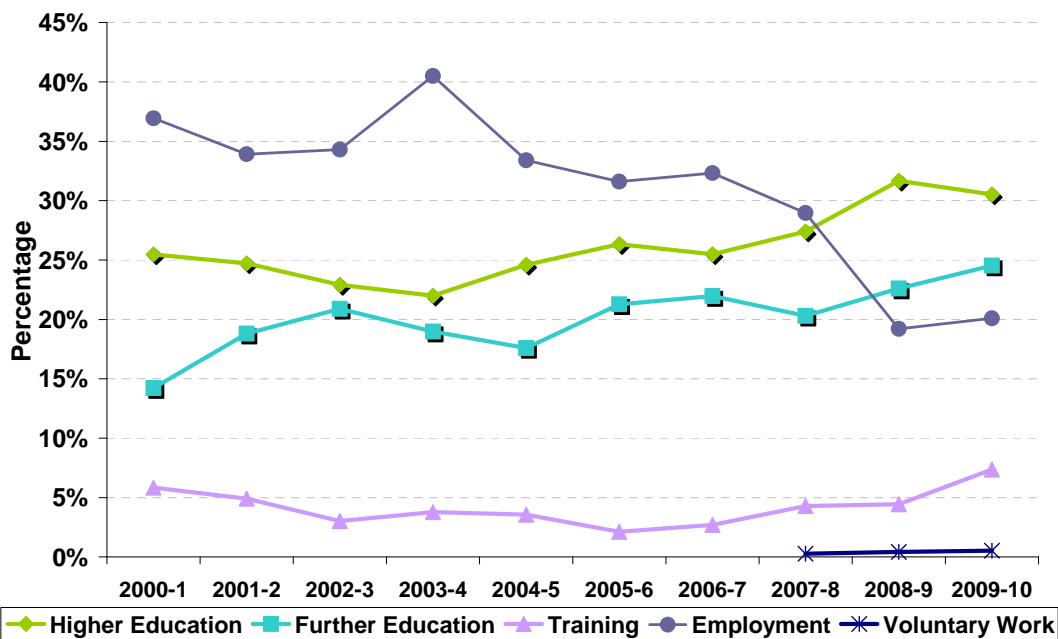
**Skills Development Scotland
Midlothian Council School Leaver Destination Report 2009-10**

Table 2: Local Authority Comparison to Scotland



Section 1.1 - Annual Trends

Table 3: Trends 2000 – 2010 of Positive Destinations

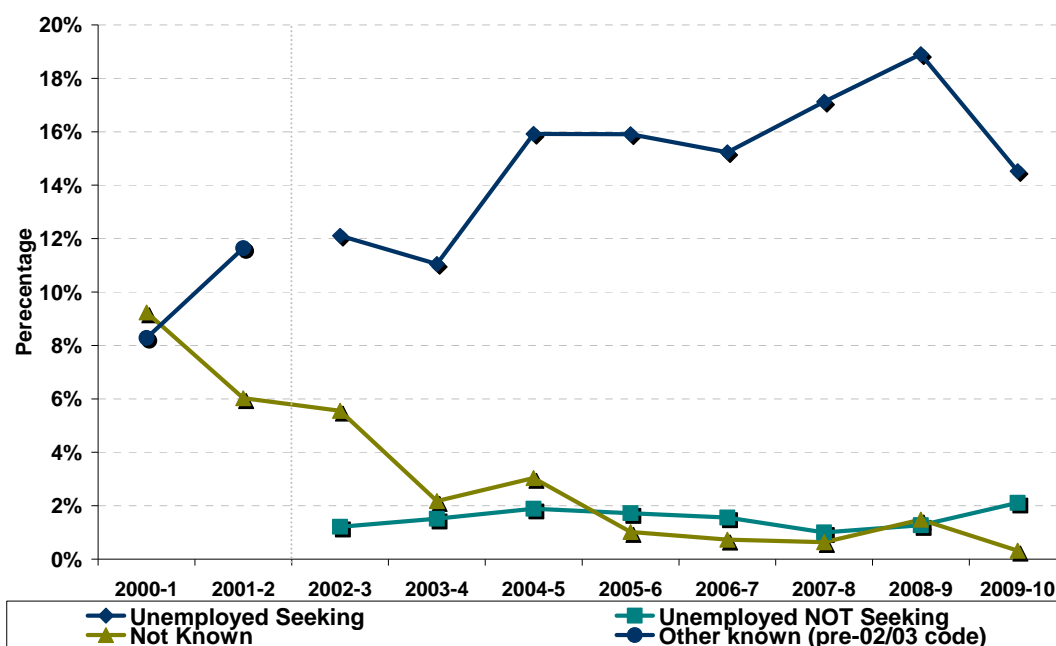


Note: Voluntary Work has been included as a separate destination category since the 2007- 08 SLDR return but was reported within the unemployed not seeking category previously.

The percentage of leavers entering Higher Education is currently **30.5%** which is **5%** higher than 10 years ago. The proportion of leavers entering Further Education has been rising over the last 10 years by **10.3%** and this year has risen to its highest level at **24.5%**. In comparison there has been a substantial drop in the percentage of leavers entering employment over the last 10 years. This has fallen from **36.9%** in 2000-01 to **20.1%** in 2009-10, a drop of **16.8%**. As outlined above, the percentage of leavers entering training has reached its highest level recorded, this year at **7.4%**.

**Skills Development Scotland
Midlothian Council School Leaver Destination Report 2009-10**

Table 4: Trends 2000 – 2010 of Other Destinations



In 2003-04 the percentage of leavers reported as unemployed seeking was **11%**, the lowest recorded level. From this point the percentage of leavers reported as unemployed seeking has in the main been increasing until it reached its highest level in 2008-09 at **18.9%**. This year the percentage has declined and it is at its lowest level since 2003-04.

As previously stated, the percentage of leavers Unknown has dropped to the lowest level ever at **0.3%**.

Table 5: Destinations from 2000 to 2010

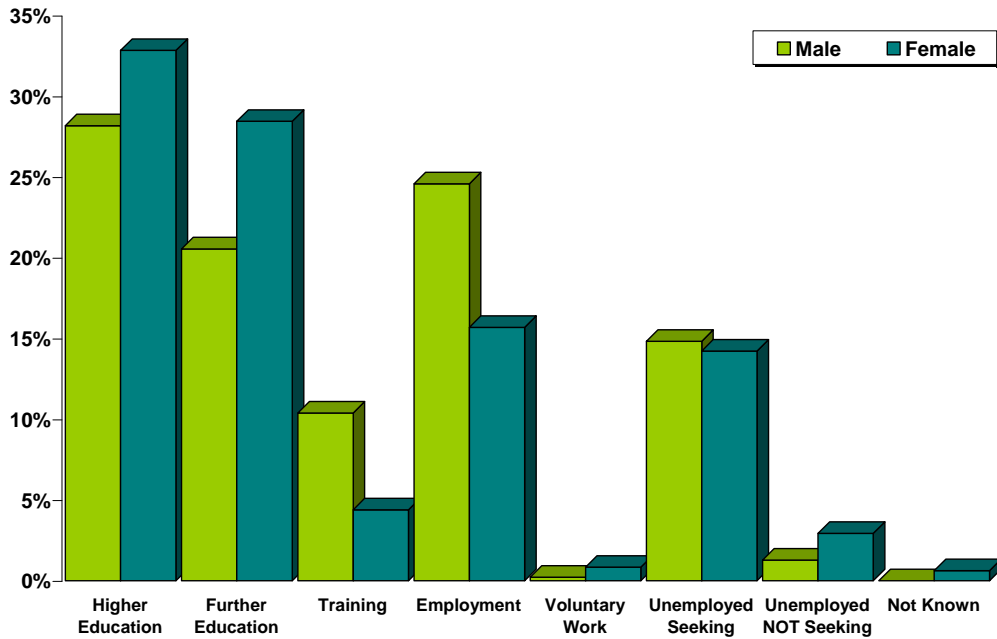
Year	Total Leavers	Higher Education	Further Education	Training	Employment	Voluntary Work	Unemployed Seeking	Unemployed NOT Seeking	Not Known	Other Known
2000-1	942	25.5%	14.2%	5.8%	36.9%				9.2%	8.3%
2001-2	979	24.7%	18.8%	4.9%	33.9%				6.0%	11.6%
2002-3	991	22.9%	20.9%	3.0%	34.3%		12.1%	1.2%	5.5%	
2003-4	1,059	22.0%	19.0%	3.8%	40.5%		11.0%	1.5%	2.2%	
2004-5	955	24.6%	17.6%	3.6%	33.4%		15.9%	1.9%	3.0%	
2005-6	987	26.3%	21.3%	2.1%	31.6%		15.9%	1.7%	1.0%	
2006-7	965	25.5%	22.0%	2.7%	32.3%		15.2%	1.6%	0.7%	
2007-8	1,098	27.4%	20.3%	4.3%	29.0%	0.3%	17.1%	1.0%	0.6%	
2008-9	947	31.7%	22.6%	4.4%	19.2%	0.4%	18.9%	1.3%	1.5%	
2009-10	950	30.5%	24.5%	7.4%	20.1%	0.5%	14.5%	2.1%	0.3%	

Note: Prior to 2002-03 both the unemployed seeking and unemployed not seeking categories were reported in a separate category called Other Known. This is reflected in the table and graph above.

Skills Development Scotland
Midlothian Council School Leaver Destination Report 2009-10

Section 1.2: Client Characteristics

Table 6: Destination split by Gender

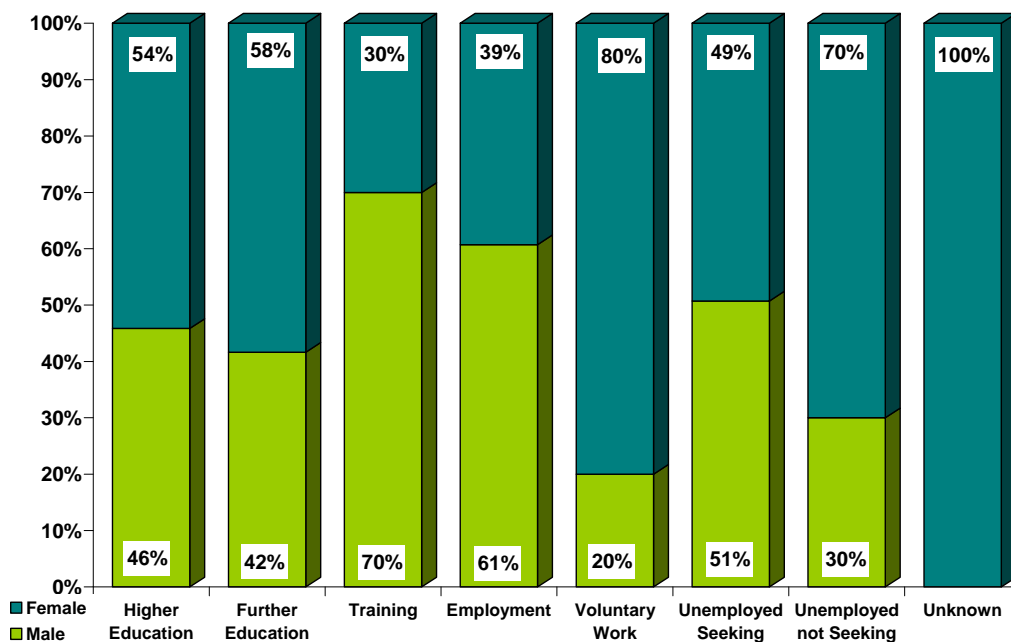


Year	Total Leavers	Higher Education	Further Education	Training	Employment	Voluntary Work	Unemployed Seeking	Unemployed NOT Seeking	Not Known
Male	472	28.2%	20.6%	10.4%	24.6%	0.2%	14.8%	1.3%	0.0%
Female	478	32.8%	28.5%	4.4%	15.7%	0.8%	14.2%	2.9%	0.6%

There is a fairly even balance between the percentage of males and females entering a positive destination on leaving school with the males at **83.9%** and the females at **82.2%**. The proportion of females continuing in either further or higher education is **12.6%** higher than that for males, **61.3%** compared to **48.7%** respectively.

The percentage of males entering employment and training sits at **35%** and this is almost **15%** higher than that for females at **20.1%**. Males are more likely than females to become unemployed seeking with **50.7%** of the unemployed seeking cohort being male.

Table 7: Gender split within each destination



Skills Development Scotland
Midlothian Council School Leaver Destination Report 2009-10

Table 8: Destination by SIMD

SIMD Decile ⁱⁱ	Most Deprived → Least Deprived										Unknown
	1	2	3	4	5	6	7	8	9	10	
Higher Education	*	14%	19%	21%	29%	27%	34%	43%	42%	55%	*
Further Education	33%	26%	34%	23%	32%	31%	21%	19%	15%	17%	*
Training	*	9%	9%	11%	*	8%	*	8%	*	*	*
Employment	*	19%	14%	20%	13%	21%	29%	24%	27%	17%	*
Voluntary Work	*	*	*	*	*	*	*	*	*	*	*
Unemployed Seeking	*	24%	19%	21%	19%	13%	9%	4%	8%	7%	*
U/E Not Seeking	*	6%	5%	3%	1%	0%	0%	3%	0%	1%	*
Unknown	*	*	*	*	*	*	*	*	*	*	*
Positive Destinations	80%	69%	76%	75%	80%	87%	91%	94%	92%	92%	100%
Total	15	70	129	194	69	108	99	79	48	138	1
% of Total Leavers	2%	7%	14%	20%	7%	11%	10%	8%	5%	15%	0%

Percentages based on 5 or less have been suppressed due to disclosure reasons.

- Leavers who live in the least deprived areas are more likely to enter positive destinations on leaving school than those from the most deprived area. For example, there are a similar percentage of leavers from SIMD 10 and SIMD 3 but their outcomes are different. There is a **16%** difference in the proportion entering positive outcomes with **92%** of those in SIMD 10 entering positive destinations compared to **76%** in SIMD 3.
- Leavers who live in the least deprived areas are more likely to enter Higher Education in comparison to leavers who live in the most deprived areas. The proportion of leavers entering Higher Education from the least deprived area SMID 10 was **55%** and the proportion of leavers from the most deprived area SIMD 1 was **7%**.
- Leavers from most deprived areas are more likely to be unemployed seeking than leavers from the least deprived areas. Using the example of SIMD 1 and SIMD 10, as above, there were **20%** of leavers reported as Unemployed Seeking from SIMD 1 in comparison to **7%** in SIMD 10.

Table 9: Destination by Stage Left School.

Stage of Leaving ⁱⁱⁱ Destination	Statutory Summer Leaver	Statutory Winter Leaver	Post Statutory Leaver
Higher Education	*	*	41%
Further Education	29%	25%	23%
Training	20%	13%	4%
Employment	17%	26%	20%
Voluntary Work	*	*	*
Unemployed Seeking	29%	32%	9%
Unemployed Not Seeking	*	*	2%
Unknown	*	*	*
Positive Destinations	67%	64%	89%
Total Leavers	157	85	708
% of Total Leavers	17%	9%	75%

- It can be noted that the majority of school pupils choose to remain at school past their statutory leave date and this has an impact on their positive progression from school. Leavers who stay on past their statutory leave date are more likely to progress to positive outcomes on leaving school with the majority entering higher education.

Skills Development Scotland
Midlothian Council School Leaver Destination Report 2009-10

- Although they are in the minority, statutory winter leavers are less likely to enter positive destinations than other leavers. The highest proportion of winter leavers is reported as being unemployed seeking (32%). These leavers are just under four times more likely to be reported as unemployed seeking (32%), than a post statutory leaver (9%).
- The highest proportion of statutory summer leavers entered Further Education (29%), however, the same proportion of leavers were also reported as Unemployed Seeking. Training was the next highest destination at 20%.

Section 2: Positive Destinations

Section 2.1 Higher and Further Education

Higher Education (HE): This category includes leavers following HND (Higher National Diploma) or HNC (Higher National Certificate) courses, degree courses, courses for the education and training of teachers and higher level courses for professional qualifications. 5 young people with a deferred, unconditional place in higher education for next year have also been included in this year's figures.

Further Education (FE): This category includes leavers undertaking non advanced further education which is not higher education.

From those reported in the SLDR, 290 leavers entered Higher Education and 233 entered Further Education. Detailed analysis can be provided on 100% of this cohort for whom we hold information on institution and course chosen.

Table 10: HE Entrants by Institution Type

Institution Type	Total	%
University/HE College	212	73%
FE College	75	26%
Other	3	1%

¹ Other Category includes institutions out with Scotland and other private institutions

Table 11: HE Students by Institution

Institution ^{iv}	Total	%	Institution	Total	%
Edinburgh University	70	24%	The Robert Gordon University	8	3%
Napier University	43	15%	Abertay University Dundee	6	2%
Heriot Watt University	27	9%	Glasgow University	5	2%
Queen Margaret University, Edin	16	6%	FE Institutions	75	26%
Stirling University	14	5%	Other Institutions	15	5%
Aberdeen University	11	4%			

Institutions with less than 5 leavers are included in "Other Institutions" in the table above.

Table 12: HE Students by FE Colleges

Institution	Total	%	Institution	Total	%
Jewel and Esk College	38	13%	Edinburgh's Telford College	14	5%
Stevenson College	18	6%	Other Colleges	5	2%

Institutions with less than 5 leavers are included in "Other Institutions" in the table above.

Skills Development Scotland
Midlothian Council School Leaver Destination Report 2009-10

Table 13: FE Students by FE Colleges

Institution	Total	%	Institution	Total	%
Jewel and Esk College	124	53%	Borders College	6	3%
Edinburgh's Telford College	65	28%	Other Institutions	11	5%
Stevenson College	27	12%			

Institutions with less than 5 leavers are included in "Other Institutions" in the table above.

It can be noted from tables 11, 12 & 13 that the majority of leavers who continue their studies post school, choose to attend local institutions.

Table 14: Higher Education Course Information

Course Area	Total	%	Course Area	Total	%
Arts & Social Sciences	54	19%	Communications & Media	12	4%
Science & Mathematics	33	11%	Engineering	12	4%
Administration & Management	22	8%	Hospitality, Catering & Tourism	12	4%
Art and Design	20	7%	Finance	10	3%
Health & Medicine	20	7%	Law	10	3%
Computing & ICT	19	7%	Teaching	10	3%
Construction	16	6%	Languages	6	2%
Sport, Leisure & Sport Science	16	6%	Other course areas	4	1%
Performing Arts	14	5%			

Table 15: Further Education Course Information

Course Area	Total	%	Course Area	Total	%
Social, Caring & Advisory Services	36	15%	Administration & Management	11	5%
Construction	35	15%	Hospitality, Catering & Tourism	10	4%
General Education (Highers, etc)	24	10%	Performing Arts	10	4%
Hairdressing & Beauty	24	10%	Engineering	9	4%
Art and Design	19	8%	Health & Medicine	8	3%
Personal Dev & Prep Courses	14	6%	Animals, Land & Environment	6	3%
Sport, Leisure & Sport Science	14	6%	Other	7	3%

This is the 3rd year that SDS has gathered fuller data, across Scotland, about the course areas entered by school leavers. It shows that there has been no change in the course areas entered by leavers who enter higher education and the top four choices remain static. Arts and social science based subjects are the most popular followed by science and mathematics.

Within further education, the top three remain static too, with the first choice remaining Social/Caring related courses e.g. childcare or social care and hairdressing and beauty now the preferred fourth choice.

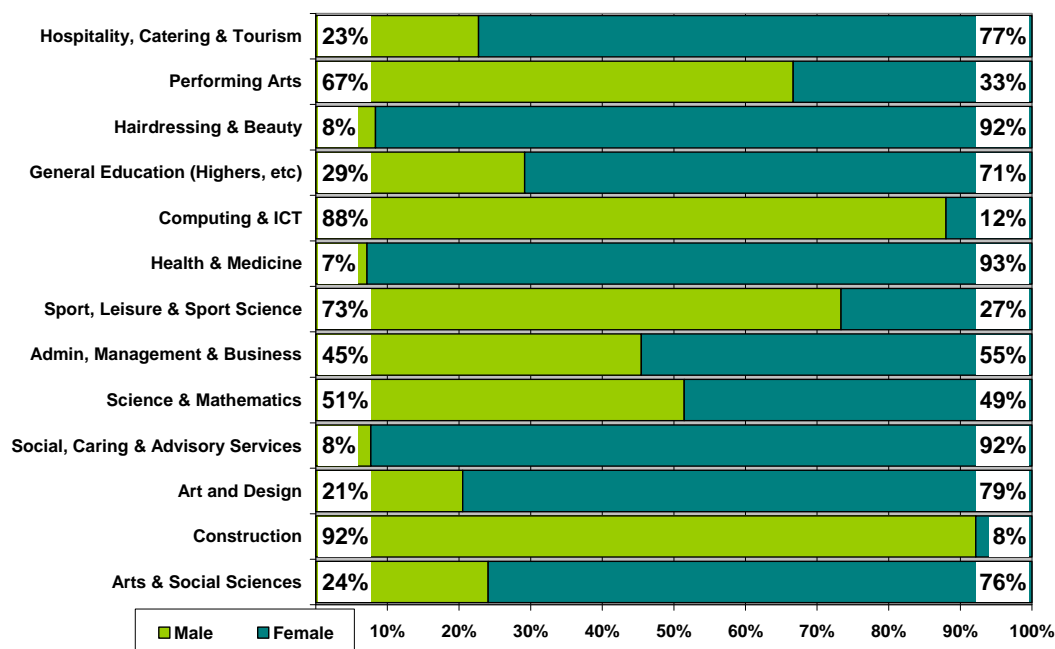
Skills Development Scotland
Midlothian Council School Leaver Destination Report 2009-10

Table 16: Course Information by Gender

Course Area	Male		Female	
	Total	%	Total	%
Arts & Social Sciences	13	6%	41	14%
Construction	47	20%	*	*
Art and Design	8	3%	31	11%
Social, Caring & Advisory Services	*	*	36	12%
Science & Mathematics	18	8%	17	6%
Administration & Management	15	7%	18	6%
Sport, Leisure & Sport Science	22	10%	8	3%
Health & Medicine	*	*	26	9%
Computing & ICT	22	10%	*	*
General Education (Highers, etc)	7	3%	17	6%
Hairdressing & Beauty	*	*	22	8%
Performing Arts	16	7%	8	3%
Hospitality, Catering & Tourism	5	2%	17	6%
Engineering	21	9%	*	*
Personal Dev & Prep Courses	6	3%	8	3%
Communications & Media	9	4%	*	*
Finance	6	3%	*	*
Law	*	*	9	3%
Teaching	*	*	7	2%
Animals, Land & Environment	*	*	5	2%

Courses with less than 5 leavers have been suppressed

Table 17: Gender split within the course areas in both FE/HE



Construction remains the most popular choice for male leavers continuing with their education post school, as 1 in 5 enter subjects related to construction. This is double the percentage of those entering the next most popular subject areas of sports or computing related courses. In comparison, Arts & Social Sciences is the most popular choice with females (14%), followed by Social and Caring related courses (12%).

Skills Development Scotland
Midlothian Council School Leaver Destination Report 2009-10

Section 2.2: Employment

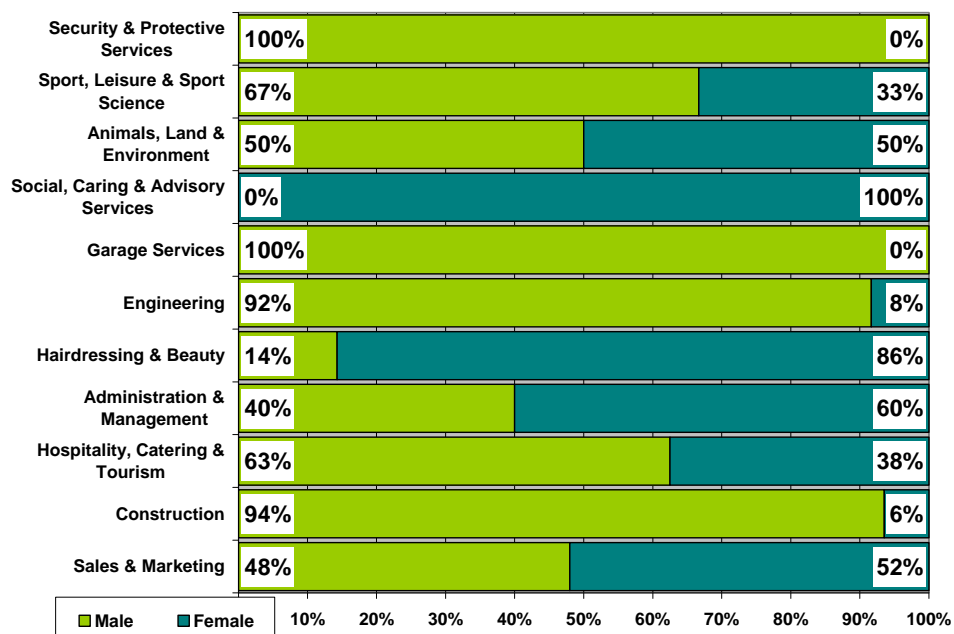
Employment: This category includes those who are employed and who are in receipt of payment from their employers. It includes young people undertaking training in employment through Skillseekers and Modern Apprenticeships. **191** young people entered Employment and analysis can be provided on all of those entering employment for whom we hold information about the occupational area entered.

Table 18: Those entering Employment by Occupational Area

Occupational Area	Male		Female	
	Total	%	Total	%
Sales & Marketing	24	21%	26	35%
Construction	29	25%	*	*
Hospitality, Catering & Tourism	15	13%	9	12%
Administration & Management	6	5%	9	12%
Hairdressing & Beauty	*	*	12	16%
Engineering	11	10%	*	*
Garage Services	9	8%	*	*
Social, Caring & Advisory Services	*	*	9	12%
Animals, Land & Environment	*	*	*	*
Sport, Leisure & Sport Science	*	*	*	*

Occupational areas with less than 5 leavers have been suppressed

Table 19: Gender split within the top employment areas



The most popular area of employment entered by all school leavers continues to be sales & marketing which includes retail operations with **26%** of those entering employment working in this sector. The second most popular area was hospitality, catering and tourism at **16%**.

The most popular occupational area of males is construction at **25%**, followed by sales and marketing at **21%**.

Sales and Marketing which includes retail is the most popular occupational area for female leavers at **35%**. Hairdressing and beauty is the second most popular choice at **16%**.

Section 3: Other Destinations

School leavers who do not achieve a positive destination on leaving school are known as the MCMC group and are key customers for Skills Development Scotland and our partner organisations. The SLDR is a snapshot in time and should only be used as an indicator.

Unemployed and seeking employment or training: This category includes those who are in contact with SDS and are known by them to be seeking employment or training. This is based on regular contact between SDS and the client. This does not refer to the definition of 'unemployed' used by the Benefits Agency to calculate published unemployment rates. There were **2** leavers who were in this status which equates to **1%** of the unemployed seeking cohort.

Unemployed and not seeking employment or training: This category includes all those individuals who are not seeking employment or training for a range of reasons. These individual circumstances may involve sickness, prison, pregnancy, caring for children or other dependents or taking time out.

Section 3.1 Unemployed Seeking

The table provides a comparison of the percentage of unemployed seeking clients with specific characteristics as opposed to the rate of the full SLDR cohort

Table 20: Client Characteristics

Characteristics	% of Full SLDR	% of Unemployed Seeking
Gender		
Male	50%	51%
Female	50%	49%
Stage Left School		
Statutory Summer Leaver	17%	33%
Statutory Winter Leaver	9%	20%
Post Statutory Leaver	75%	47%
Qualifications on Leaving School^v		
Access 1 / No formal Qualifications	0%	1%
Access 2&3/Foundation Stand. Grade	4%	11%
General Standard Grade/ Intermediate1	17%	39%
Credit Standard Grade/ Intermediate 2	31%	33%
Highers/Advanced Higher	47%	15%
Unknown	1%	1%
Health And Additional Support Needs		
Looked After at Home/ Looked after away from home ^{vi}	4%	6%
Additional Support Plan Recorded ^{vii}	3%	4%
Health Factor/Additional Support Need Identified ^{viii}	13%	19%

Skills Development Scotland
Midlothian Council School Leaver Destination Report 2009-10

Table 20: Client Characteristics (cont)

Characteristics		% of Full SLDR	% of Unemployed Seeking
SIMD Decile Ranking /Deprivation (SIMD 2009)			
Most deprived	1	2%	2%
	2	7%	12%
	3	14%	17%
	4	20%	30%
	5	7%	9%
	6	11%	10%
	7	10%	7%
	8	8%	2%
	9	5%	3%
Least Deprived	10	15%	7%

- Male leavers account for **50%** of the leaving cohort and also for **51%** of leavers reported as unemployed seeking.
- Statutory winter leavers represent only **9%** of the whole SLDR cohort but are disproportionately represented within the leavers reported as unemployed seeking at **20%**, as are statutory summer leavers with **17%** and **33%** respectively.
- The unemployed seeking leavers who have general level standard grades account for **17%** of the total leavers in 2009 – 10, however they account for **39%** of the unemployed seeking. Leavers who have general level standard grades and below account for a disproportionate level of the unemployed seeking category.

Table 21: Leavers by Intermediate Data zone

There were **138** leavers from Midlothian schools who were reported as unemployed seeking in the SLDR. By using postcodes, we were able to identify areas within the authority where unemployed school leavers were living. However, at the snapshot, **12** of the leavers were living outside the local authority area but a further **5** unemployed seeking school leavers from other local authority schools were residing within the local authority boundaries. The analysis below is based on **131** leavers residing in the authority and who SDS held postcode information for. The table below shows the intermediate data zones with the highest percentage of unemployed leavers.

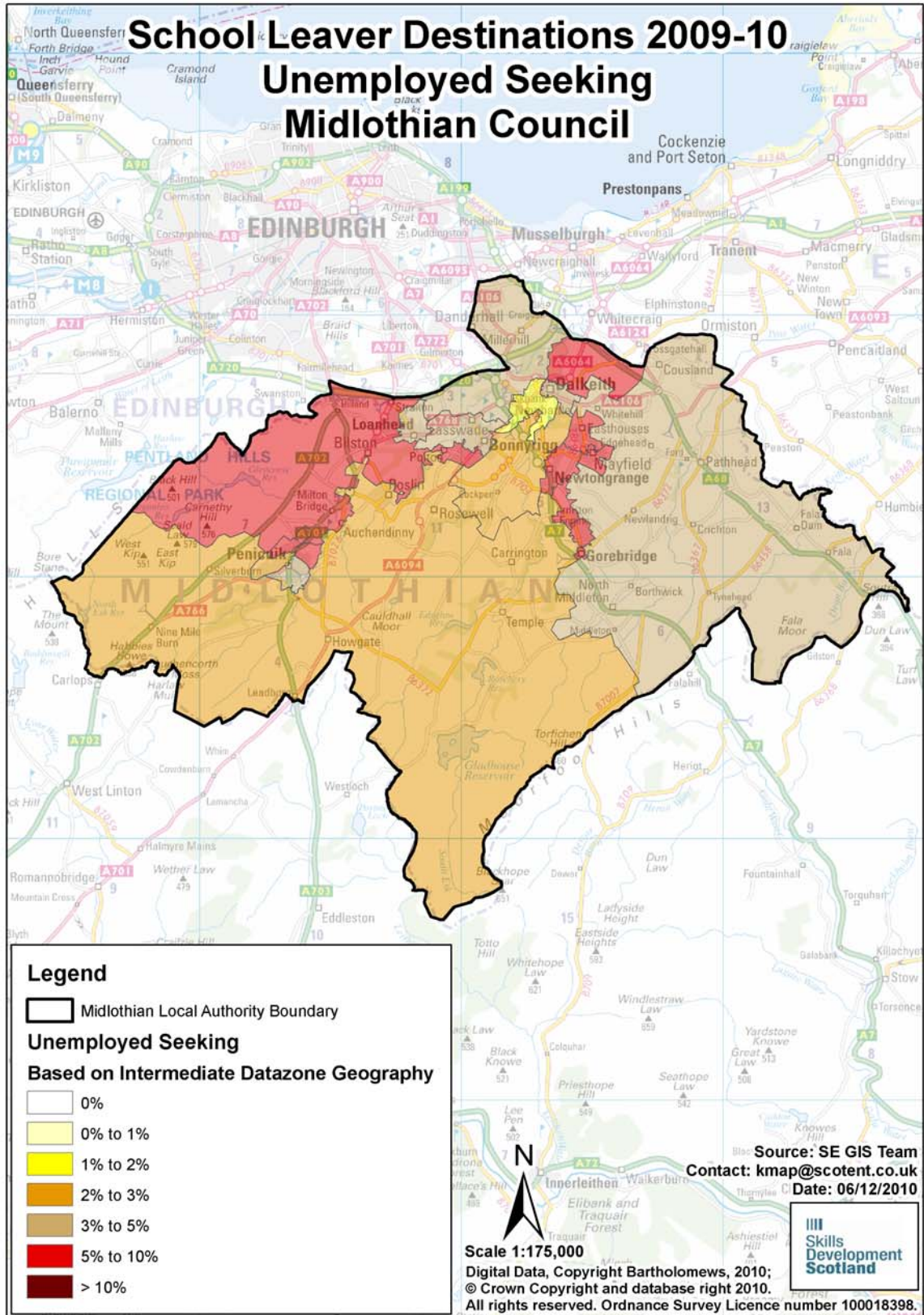
Intermediate Data zone ^{ix}	Total	Total Leavers	Intermediate Data zone	Total	Total Leavers %
Bonnyrigg South	10%	13	Gorebridge and Middleton	5%	7
Easthouses	10%	13	North Gorebridge	5%	7
Newtongrange	8%	11	Penicuik East	5%	7
Mayfield	7%	9	Pentland	5%	7
Penicuik North	7%	9	Bonnyrigg North	5%	6
Thornycroft	6%	8	Dalkeith	4%	5

Intermediate Data zone areas with less than 5 leavers have been suppressed

**Skills Development Scotland
Midlothian Council School Leaver Destination Report 2009-10**

Table 22: Destinations of School Leavers: % Unemployed Seeking, 2009/10

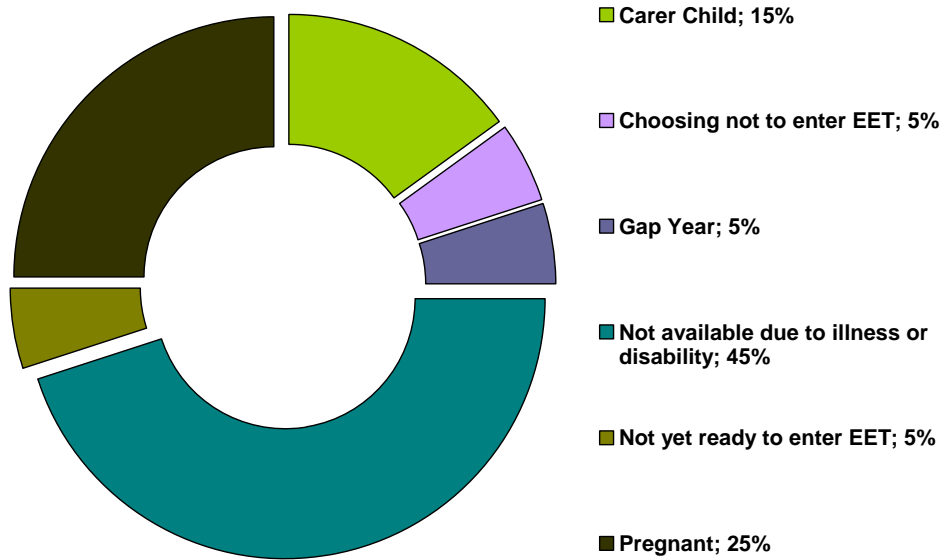
The map shows the intermediate data zones where the **131** leavers who were residing within the local authority boundary reside. Percentages have been calculated as a proportion of the number of leavers reported



Section 3.2 Unemployed NOT Seeking

There were **20** school leavers within this category.

Table 23: Individual Circumstances of those Unemployed NOT Seeking



Section 3.3 Unknown

There were **3** school leavers whose current destination was unknown at the time of SLDR.

Skills Development Scotland
Midlothian Council School Leaver Destination Report 2009-10

Table 24: Destinations by School, Percentage

School	Higher Education	Further Education	Training	Employment	Voluntary Work	Unemployed Seeking	Unemployed Not Seeking	Not Known	Total Leavers	% Pos	% Other
Beeslack Community High School	38.8%	20.6%	3.8%	23.1%	0.0%	12.5%	0.6%	0.6%	160	86.3%	13.8%
Dalkeith High School	32.2%	21.7%	11.2%	19.1%	0.0%	13.8%	2.0%	0.0%	152	84.2%	15.8%
Lasswade High School Centre	32.6%	28.6%	6.7%	18.3%	0.4%	12.1%	1.3%	0.0%	224	86.6%	13.4%
Newbattle High School	13.3%	20.0%	12.7%	22.7%	1.3%	24.0%	5.3%	0.7%	150	70.0%	30.0%
Penicuik High School	41.7%	21.2%	3.8%	16.7%	1.5%	13.6%	1.5%	0.0%	132	84.8%	15.2%
St David's RC High School	23.5%	34.1%	6.1%	21.2%	0.0%	12.1%	2.3%	0.8%	132	84.8%	15.2%
Midlothian Council	30.5%	24.5%	7.4%	20.1%	0.5%	14.5%	2.1%	0.3%	950	83.1%	16.9%

Background Notes:

ⁱ **Positive Destinations:** includes higher education, further education, training, employment and voluntary work. See text above for explanation of each destination heading.

ⁱⁱ **The Scottish Index of Multiple Deprivation (SIMD):** SIMD identifies small area concentrations of multiple deprivation across all of Scotland in a consistent way. SDS uses a file created by Scottish Neighbourhood Statistics to identify SIMD based on an individual leaver's postcode. The leaver's postcode is based on the last known address of the leaver as recorded on our client management system. Where there were gaps in the data held on our CMS, the last known address supplied in the annual import of pupil details has been used. As the last known postcode is used it may be that a leaver from one local authority was living in another local authority at the time of the return. Therefore, the SIMD relates to where a leaver was living and not the concentration of SIMD within a local authority.

ⁱⁱⁱ **Stage of Leaving:** A **statutory summer leaver** is a school leaver who chooses to leave school at the earliest opportunity (31st May) when they become eligible to leave school i.e. their 16th birthday falls on or between 1st March and 30th September in their year of leaving. A **statutory winter leaver** is a school leaver who chooses to leave school at the earliest opportunity when they become eligible to leave school i.e. their 16th birthday falls between 1st October and the last day in February. A **post statutory leaver** is a school leaver who chose to remain at school past their statutory leave date e.g. a winter leaver who would have been eligible to leave at the winter leave date but choose to remain at school until the summer leave date. Included in this group are leavers who have past their statutory leave date and have left school at any stage throughout the year.

^{iv} **Institutions:** through our follow up of leavers, we confirm Further and Higher Education destinations and as part of the process we request further information about the institution a leaver is attending. This is not a requirement of the Scottish Government and the information displayed is based on the recorded detail on Insight, the SDS

^v **Qualifications on leaving school:** This information is based on pre-appeal information from the Scottish Qualifications Agency where SDS received information about a leaver's qualifications and a robust match of records was made. Where no match was made the qualification level has been gathered through our interaction with individuals.

^{vi} **Looked After at Home/ Looked after away from home:** This refers to recent school leavers that SDS has recorded information that they had an episode of being looked after at home or looked after away from home. This information is gathered in a variety of ways including local SDS contact with Social Work departments, data received through the school import process or via direct contact with individuals. It is recognised that this information may not be complete when compared with similar data from social work services departments. However SDS is working with the Scottish Government and local authorities to look at improving the sharing of information in respect of these young people therefore the figures used are indicative.

^{vii} **Additional Support Plan Recorded:** SDS receives data from all local authority schools and school centres with pupils in stages S1-S6 or special schools to import into our client management system. We receive information about those who have co-ordinated support plans (CSP) and individualised educational programmes. We also gather information directly from individuals and via our ongoing work with schools. We acknowledge that the data may vary from that held by local authorities therefore the figures used are indicative.

^{viii} **Health Factor/Additional Support Need Identified:** SDS receives data from all local authority schools and school centres with pupils in stages S1-S6 or special schools to import into our client management system. We receive information about those who have identified additional support needs. We also gather information directly from individuals and via our ongoing work with schools. We acknowledge that the data may vary from that held by local authorities therefore the figures used are indicative.

^{ix} **Intermediate Data zone Geography:** The data zone is the key small area statistical geography in Scotland. The intermediate geography is built up from data zones and can be used to disseminate statistics that are not suitable for release at the data zone level. Due to the small number of individuals it has been decided to use the intermediate level geography. There are 1235 intermediate zones in Scotland, containing on average 4000 household residents and these have been designed to respect local authority boundaries as at 2001 Census.