

# **School Leaver Destination Report**

**2009 – 2010**

**Glasgow City Council**

## Contents

<b>Section 1: Overview – Main Findings</b> .....	<b>3</b>
<i>Table 1: Destination Totals</i> .....	4
<i>Table 2: Local Authority Comparison to Scotland</i> .....	5
<b>Section 1.1 - Annual Trends</b> .....	<b>5</b>
<i>Table 3: Trends 2000 – 2010 of Positive Destinations</i> .....	5
<i>Table 4: Trends 2000 – 2010 of Other Destinations</i> .....	5
<i>Table 5: Destinations from 2000 to 2010</i> .....	6
<b>Section 1.2: Client Characteristics</b> .....	<b>6</b>
<i>Table 6: Destination split by Gender</i> .....	6
<i>Table 7: Gender split within each destination</i> .....	7
<i>Table 8: Destination by SIMD</i> .....	8
<i>Table 9: Destination by Stage Left School.</i> .....	9
<b>Section 2: Positive Destinations</b> .....	<b>9</b>
<b>Section 2.1 Higher and Further Education</b> .....	<b>9</b>
<i>Table 10: HE Entrants by Institution Type</i> .....	9
<i>Table 11: HE Students by Institution</i> .....	10
<i>Table 12: HE Students by FE Colleges</i> .....	10
<i>Table 13: FE Students by FE Colleges</i> .....	10
<i>Table 14: Higher Education Course Information</i> .....	10
<i>Table 15: Further Education Course Information</i> .....	11
<i>Table 16: Course Information by Gender</i> .....	11
<i>Table 17: Gender split within the course areas in both FE/HE</i> .....	12
<b>Section 2.2: Employment</b> .....	<b>13</b>
<i>Table 18: Those entering Employment by Occupational Area</i> .....	13
<i>Table 19: Gender split within the top employment areas</i> .....	13
<b>Section 3: Other Destinations</b> .....	<b>14</b>
<b>Section 3.1 Unemployed Seeking</b> .....	<b>14</b>
<i>Table 20: Client Characteristics</i> .....	14
<i>Table 21: Leavers by Intermediate Data zone</i> .....	15
<i>Table 22: Destinations of School Leavers: % Unemployed Seeking, 2009/10</i> .....	16
<b>Section 3.2 Unemployed NOT Seeking</b> .....	<b>16</b>
<b>Section 3.2 Unemployed NOT Seeking</b> .....	<b>17</b>
<i>Table 23: Individual Circumstances of those Unemployed NOT Seeking</i> .....	17
<b>Section 3.3 Unknown</b> .....	<b>17</b>
<i>Table 24: Destinations by School, Percentage</i> .....	18
<i>Background Notes:</i> .....	19

## Background

The School Leaver Destination Return (SLDR) is a statistical return undertaken by Skills Development Scotland (SDS) on behalf of the Scottish Government. The Return is based on a follow up of young people who left school between the 1st of August 2009 and the 31st of July 2010. This exercise was carried out during the month of September 2010.

The Scottish Government use the data produced from the Return to report against the National Indicator and target, "increase the proportion of school leavers (from Scottish publicly funded schools) in positive and sustained destinations (FE, HE, employment or training)". Partners, particularly Local Authorities, use the data to inform initiatives developed as part of the More Choices More Chances Strategy, to evidence the success of initiatives, measure progress against targets, and to identify areas to target resources to improve the post school outcomes for young people.

## Methodology

The return is carried out during the month of September with staff across Skills Development Scotland following up over 55,000 school leavers. Destinations are confirmed throughout the follow up period and the destination that is reported is the destination that is known at the snapshot date. This year, we reported the information as known to us on 2nd October 2010. Destinations of young people are fluid in nature, therefore, it is possible that a leaver entered employment or training on leaving school but by the time the snapshot was taken this destination may have changed to another destination.

The information that is gathered is recorded within the SDS CMS system (Insight) which enables us to produce MIS reports and populate the data fields to be sent to the Government. This data is transferred at an individual level and undergoes a matching & validation process until a cohort is agreed. This allows the government's analytical services unit to match the client's individual outcome with other indicators such as social economic background, additional support needs and stage of leaving, etc. All information in this report, however, is based upon data held within the SDS Insight database which has been analysed to produce the graphs and tables contained within this report.

## Analysis

Only leavers from publicly funded secondary schools are within the scope of the SLDR. This report relates to **4,943** leavers from publicly funded secondary schools. This relates to approximately a **5%** reduction in the number of leavers reported in the SLDR in 2008-09.

**Note:** Although Jordanhill School is grant maintained it has been included in the analysis that follows and within the Glasgow City totals.

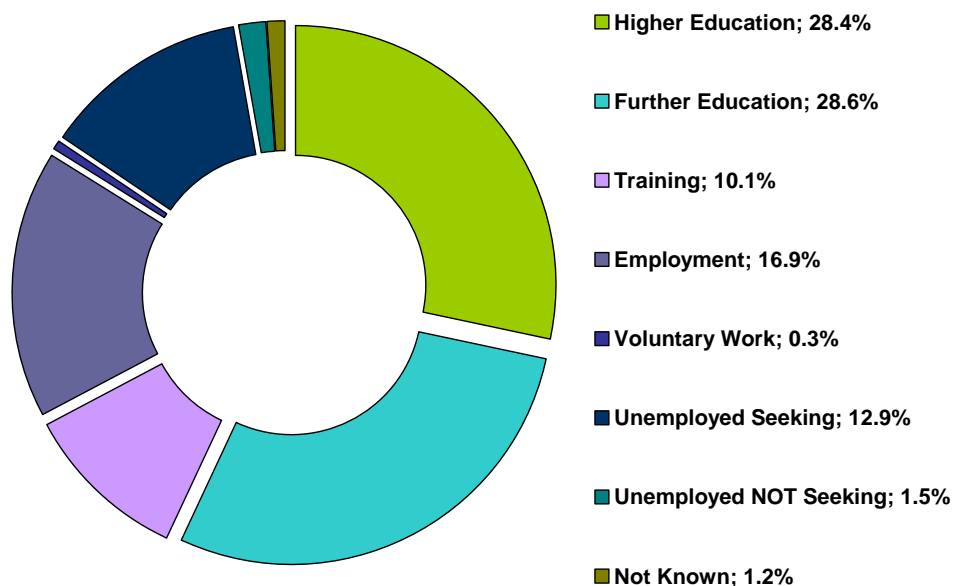
## Section 1: Overview – Main Findings

- Overall the percentage of leavers entering a positive destination<sup>i</sup> is **84.3%**, a rise of **0.3%** on last year and means the authority has the 6<sup>th</sup> lowest level of positive destinations in Scotland.
- The proportion of leavers entering further and higher education witnessed a slight reduction this year to **57.1%**, a fall of **0.1%** compared to last year.
- In comparison to 2008-09, the percentage of leavers entering higher education has increased slightly to **28.4%**, a slight rise of **1.7%**. Despite this rise, the percentage of leavers entering higher education is the 2<sup>nd</sup> lowest percentage in Scotland and this position is the same as last year.
- The percentage of leavers entering further education has also decreased very slightly to **28.6%**, a reduction of **1.8%** from 2008-09. However, this percentage is slightly above the national average (**27.1%**).

## Skills Development Scotland Glasgow City Council School Leaver Destination Report 2009-10

- The percentage of leavers entering training increased slightly in 2009-10 to **10.1%**, which is the 3rd highest level in Scotland.
- The percentage of leavers entering employment has reduced from **17.9%** in 2008-09 to **16.9%**, which is also the lowest percentage recorded in a decade.
- The percentage of leavers who are unemployed seeking has increased to **12.9%**, around **1.6%** higher than the national average and **0.6%** higher than last year.
- School leavers whose destination is unknown to SDS has fallen to its lowest recorded level at **1.2%**.

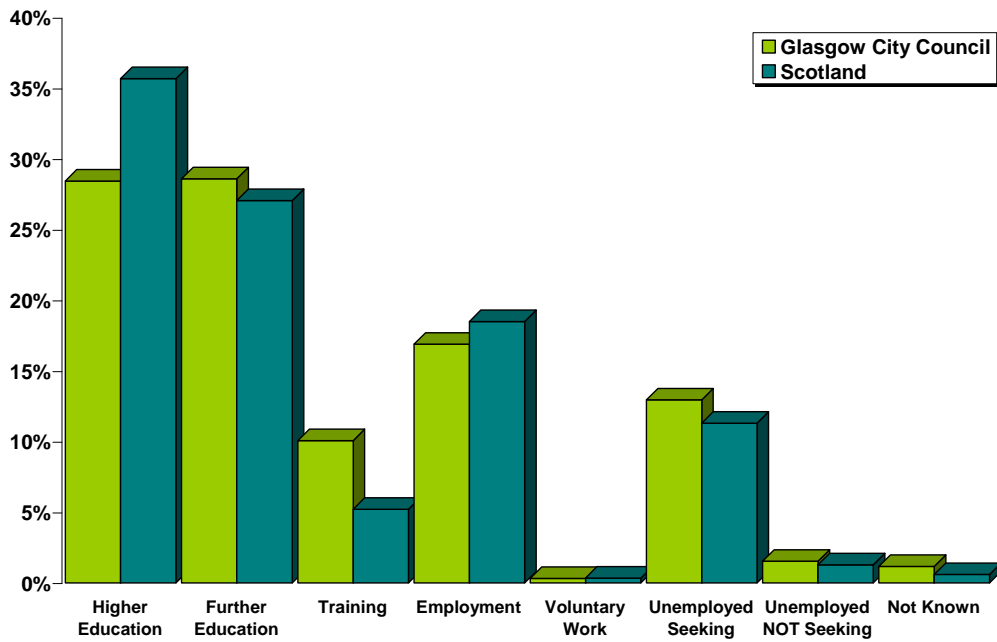
**Table 1: Destination Totals**



Area	Total Leavers	Higher Education	Further Education	Training	Employment	Voluntary Work	Unemployed Seeking	Unemployed NOT Seeking	Not Known
Glasgow City	<b>4,943</b>	<b>28.4%</b> 1,406	<b>28.6%</b> 1,414	<b>10.1%</b> 498	<b>16.9%</b> 835	<b>0.3%</b> 16	<b>12.9%</b> 640	<b>1.5%</b> 76	<b>1.2%</b> 58
Scotland	<b>54,097</b>	<b>35.7%</b> 19,309	<b>27.1%</b> 14,637	<b>5.2%</b> 2,822	<b>18.5%</b> 10,005	<b>0.3%</b> 187	<b>11.3%</b> 6,117	<b>1.3%</b> 696	<b>0.6%</b> 324

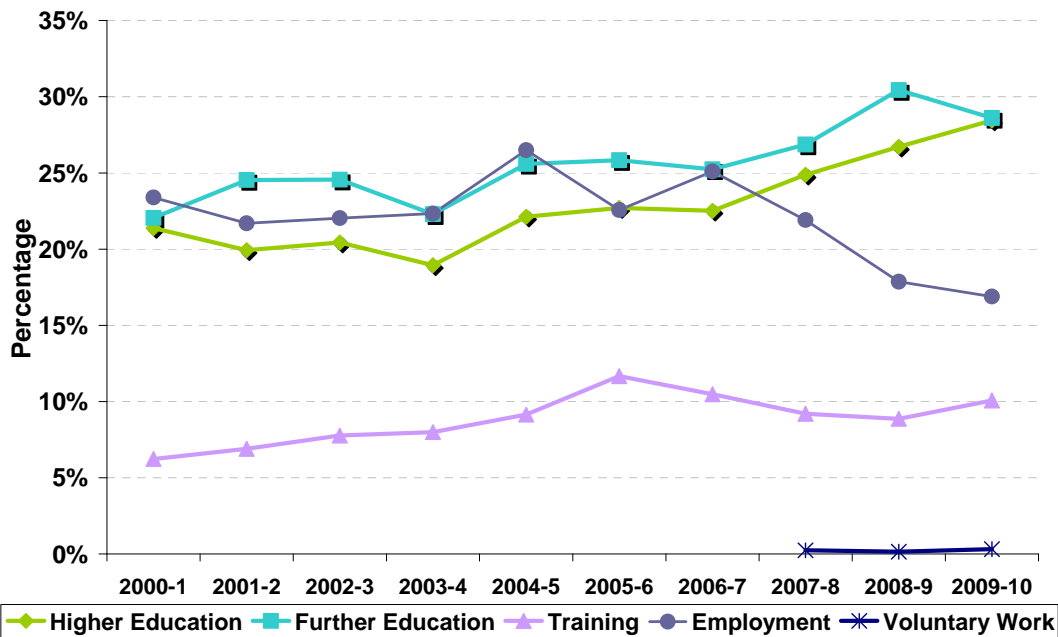
# Skills Development Scotland Glasgow City Council School Leaver Destination Report 2009-10

**Table 2: Local Authority Comparison to Scotland**



## Section 1.1 - Annual Trends

**Table 3: Trends 2000 – 2010 of Positive Destinations**

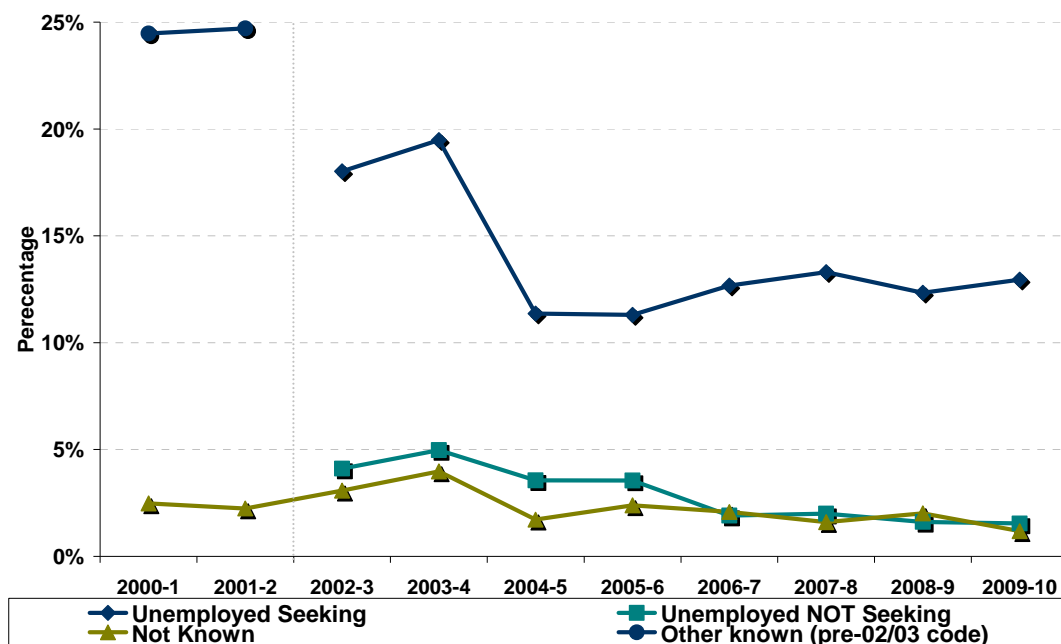


Note: Voluntary Work has been included as a separate destination category since the 2007-08 SLDR return but was reported within the unemployed not seeking category previously.

Over the last four returns, the percentage of leavers entering Higher Education has risen year on year and has now reached its highest level in a decade for Glasgow City Council. Since 2006-07 the percentage of leavers entering further education had been rising but this year there was a slight drop. There has been a decline in percentage of leavers entering employment since 2006-7 and this year this trend has continued to reach the lowest level in a decade.

**Table 4: Trends 2000 – 2010 of Other Destinations**

## Skills Development Scotland Glasgow City Council School Leaver Destination Report 2009-10



The proportion of leavers reported as unemployed seeking dropped dramatically in 2004-5 and fell slightly the year after. However, in 2005-6, the percentage began to rise again until last year's drop to **12.3%**. Unfortunately, there has been a slight rise this year of **0.6%** to **12.9%**. The percentage of leavers unknown had been fluctuating in recent years but this year it has fallen to the lowest level ever at **1.2%**.

**Table 5: Destinations from 2000 to 2010**

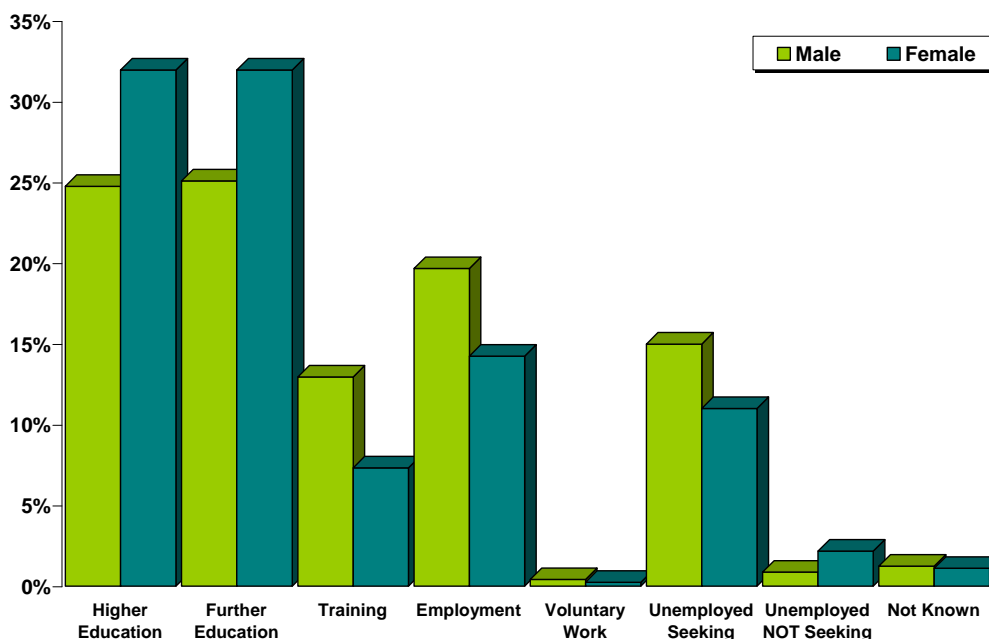
Year	Total Leavers	Higher Education	Further Education	Training	Employment	Voluntary Work	Unemployed Seeking	Unemployed NOT Seeking	Not Known	Other Known
2000-1	<b>5,407</b>	21.4%	22.0%	6.2%	23.4%				2.5%	24.5%
2001-2	<b>5,408</b>	19.9%	24.5%	6.9%	21.7%				2.2%	24.7%
2002-3	<b>5,460</b>	20.4%	24.6%	7.8%	22.0%		18.0%	4.1%	3.1%	
2003-4	<b>5,436</b>	18.9%	22.3%	8.0%	22.3%		19.5%	5.0%	4.0%	
2004-5	<b>5,174</b>	22.1%	25.6%	9.1%	26.5%		11.4%	3.6%	1.7%	
2005-6	<b>5,153</b>	22.7%	25.8%	11.7%	22.6%		11.3%	3.6%	2.4%	
2006-7	<b>5,199</b>	22.5%	25.2%	10.5%	25.1%		12.7%	1.9%	2.1%	
2007-8	<b>5,421</b>	24.9%	26.9%	9.2%	21.9%	0.2%	13.3%	2.0%	1.6%	
2008-9	<b>5,221</b>	26.7%	30.4%	8.9%	17.9%	0.2%	12.3%	1.6%	2.0%	
2009-10	<b>4,943</b>	<b>28.4%</b>	<b>28.6%</b>	<b>10.1%</b>	<b>16.9%</b>	<b>0.3%</b>	<b>12.9%</b>	<b>1.5%</b>	<b>1.2%</b>	

**Note:** Prior to 2002-03 both the unemployed seeking and unemployed not seeking categories were reported in a separate category called Other Known. This is reflected in the table and graph above.

### Section 1.2: Client Characteristics

**Table 6: Destination split by Gender**

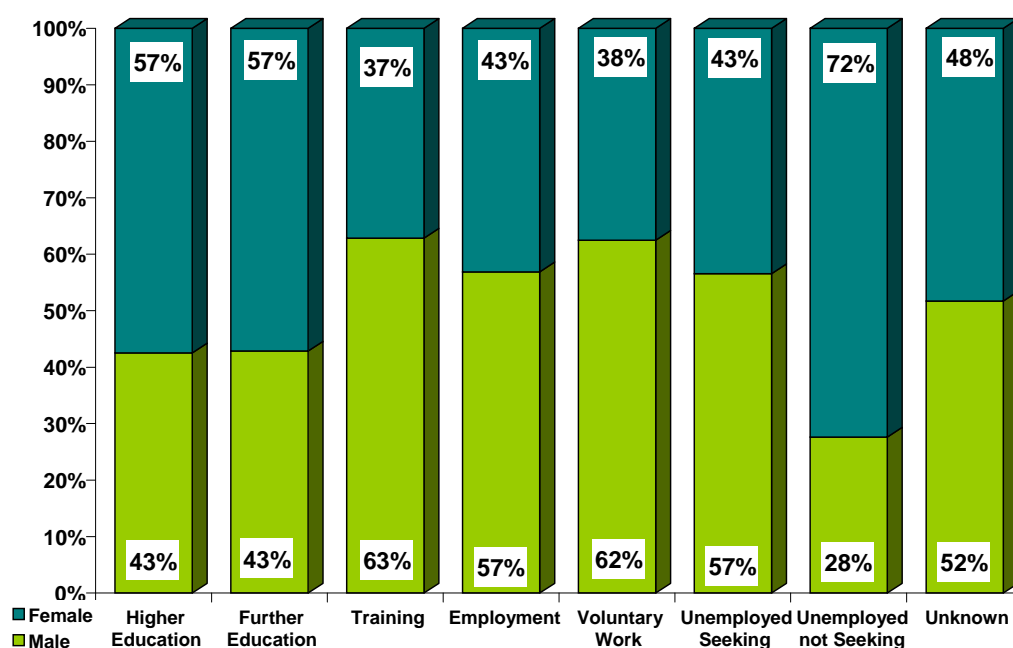
## Skills Development Scotland Glasgow City Council School Leaver Destination Report 2009-10



Year	Total Leavers	Higher Education	Further Education	Training	Employment	Voluntary Work	Unemployed Seeking	Unemployed NOT Seeking	Not Known
Male	<b>2,415</b>	24.8%	25.1%	13.0%	19.7%	0.4%	15.0%	0.9%	1.2%
Female	<b>2,528</b>	32.0%	32.0%	7.3%	14.2%	0.2%	11.0%	2.2%	1.1%

Female leavers (**85.7%**) are more likely than male leavers (**82.9%**) to enter positive destinations on leaving school. The proportion of female leavers who continue their education in either higher or further education is **63.9%** compared to **49.9%** of males. The percentage of males entering employment and training (**32.6%**) is approx **11%** higher than that for females (**21.6%**). Males are more likely to become unemployed and seeking than females with over **56.6%** of leavers reported as unemployed seeking being male. Also the breakdown of leavers who enter training is **63%** male to **37%** female.

**Table 7: Gender split within each destination**



## Skills Development Scotland Glasgow City Council School Leaver Destination Report 2009-10

**Table 8: Destination by SIMD**

SIMD Decileii	Most Deprived → Least Deprived										Unknown
	1	2	3	4	5	6	7	8	9	10	
Higher Education	17%	20%	32%	35%	38%	37%	49%	51%	62%	68%	*
Further Education	30%	34%	29%	29%	26%	30%	23%	21%	14%	11%	*
Training	15%	11%	6%	9%	5%	5%	4%	3%	*	*	*
Employment	17%	20%	17%	14%	16%	18%	17%	17%	16%	13%	*
Voluntary Work	0%	*	*	*	*	*	*	*	*	*	*
Unemployed Seeking	17%	13%	12%	11%	11%	8%	6%	7%	7%	6%	*
U/E Not Seeking	2%	1%	2%	*	*	*	*	*	*	*	*
Unknown	1%	1%	*	*	2%	*	0%	0%	1%	0%	*
<b>Positive Destinations</b>	<b>80%</b>	<b>84%</b>	<b>84%</b>	<b>87%</b>	<b>85%</b>	<b>90%</b>	<b>94%</b>	<b>92%</b>	<b>92%</b>	<b>94%</b>	*
<b>Total</b>	<b>2,038</b>	<b>783</b>	<b>470</b>	<b>322</b>	<b>253</b>	<b>296</b>	<b>224</b>	<b>236</b>	<b>212</b>	<b>107</b>	<b>2</b>
<b>% of Total Leavers</b>	<b>41%</b>	<b>16%</b>	<b>10%</b>	<b>7%</b>	<b>5%</b>	<b>6%</b>	<b>5%</b>	<b>5%</b>	<b>4%</b>	<b>2%</b>	*

Percentages based on 5 or less have been suppressed due to disclosure reasons.

- In general, leavers who live in the least deprived areas are more likely to enter positive destinations on leaving school than those from the most deprived area. For example **80%** of those who live in SIMD 1 enter positive destinations whereas **94%** of those in SIMD 10 enter positive destinations.
- Leavers who live in the least deprived areas are more likely to enter Higher Education in comparison to leavers who live in the most deprived areas. The proportion leavers entering higher education from the least deprived area (**68%**) is four times the proportion for leavers from the most deprived areas (**17%**). It is noticeable that the percentage of leavers entering higher education gradually rises with each SIMD decile.
- The highest proportion of leavers in both SIMD 1 and SIMD 2 enter further education. A higher proportion of leavers from these areas also enter training.
- Leavers from most deprived areas are also more likely to be unemployed seeking than leavers from the least deprived areas.

**Table 9: Destination by Stage Left School.**

Stage of Leaving <sup>iii</sup> Destination	Statutory Summer Leaver	Statutory Winter Leaver	Post Statutory Leaver
Higher Education	*	2%	42%
Further Education	31%	26%	29%
Training	24%	19%	4%
Employment	17%	23%	15%
Voluntary Work	*	*	*
Unemployed Seeking	24%	24%	7%
Unemployed Not Seeking	2%	4%	1%
Unknown	2%	1%	1%
Positive Destinations	72%	70%	91%
<b>Total Leavers</b>	898	737	3,308
<b>% of Total Leavers</b>	18%	15%	67%

Percentages have been suppressed due to disclosure reasons.

- It can be noted that the majority of school pupils choose to remain at school past their statutory leave date and this has a positive impact on their positive progression from school. Leavers who stay on past their statutory leave date are more likely to progress to positive outcomes on leaving school with the highest proportion entering higher education.
- Statutory winter leavers are less likely to enter positive destinations and the highest percentage are reported as being in further education. Statutory winter leavers are just over three times more likely to be reported as unemployed seeking than a post statutory leaver.
- The highest proportion of statutory summer leavers enter further education with the proportion entering training and unemployed seeking being comparable.

## Section 2: Positive Destinations

### Section 2.1 Higher and Further Education

**Higher Education (HE):** This category includes leavers following HND (Higher National Diploma) or HNC (Higher National Certificate) courses, degree courses, courses for the education and training of teachers and higher level courses for professional qualifications. **19** young people with a deferred, unconditional place in higher education for next year have also been included in this year's figures.

**Further Education (FE):** This category includes leavers undertaking non advanced further education which is not higher education.

From those reported in the SLDR, **1,406** leavers entered Higher Education and **1,414** entered Further Education. Detailed analysis can be provided on **98.4% (2,774)** of this cohort for whom we hold information on institution and course chosen – Higher Education **98.9% (1,390)** & Further Education **97.9% (1,384)**.

**Table 10: HE Entrants by Institution Type**

Institution Type	Total	%
University / HE College	811	58%
FE College	541	39%
Other <sup>1</sup>	38	3%

<sup>1</sup> Other Category includes institutions out with Scotland and other private institutions

## Skills Development Scotland Glasgow City Council School Leaver Destination Report 2009-10

**Table 11: HE Students by Institution**

Institution <sup>iv</sup>	Total	%	Institution	Total	%
Strathclyde University	194	14%	Napier University	10	1%
Glasgow University	169	12%	Glasgow School of Art	9	1%
West of Scotland University	151	11%	St Andrews University	9	1%
Glasgow Caledonian University	133	10%	Heriot Watt University	8	1%
Edinburgh University	40	3%	The Robert Gordon University	5	*
Stirling University	31	2%	Outwith Scotland	38	3%
Aberdeen University	16	1%	FE Colleges	541	39%
Dundee University	13	1%	Other Institutions	11	1%
Abertay University Dundee	12	1%			

Institutions with less than 5 leavers are included in "Other Institutions" in the table above.

**Table 12: HE Students by FE Colleges**

Institution	Total	%	Institution	Total	%
Central College of Commerce	91	7%	Anniesland College	31	2%
Stow College	76	5%	North Glasgow College	28	2%
Glasgow Metropolitan College	74	5%	Clydebank College	13	1%
Cardonald College	60	4%	Coatbridge College	8	1%
Glasgow College of Nautical Studies	56	4%	James Watt College	7	1%
Langside College	42	3%	Motherwell College	7	1%
Reid Kerr College	41	3%	Other Institutions	7	1%

Institutions with less than 5 leavers are included in "Other Institutions" in the table above.

**Table 13: FE Students by FE Colleges**

Institution	Total	%	Institution	Total	%
Cardonald College	215	16%	Reid Kerr College	88	6%
Langside College	193	14%	Stow College	74	5%
Anniesland College	142	10%	Clydebank College	73	5%
Glasgow Metropolitan College	141	10%	Coatbridge College	24	2%
Central College of Commerce	102	7%	James Watt College	18	1%
John Wheatley College	96	7%	Cumbernauld College	10	1%
North Glasgow College	96	7%	Motherwell College	5	0%
Glasgow College of Nautical Studies	95	7%	Other Institutions	12	1%

Institutions with less than 5 leavers are included in "Other Institutions" in the table above.

It can be noted from tables 11, 12 & 13 that the majority of leavers who continue their studies post school, chose to attend local institutions.

**Table 14: Higher Education Course Information**

Course Area	Total	%	Course Area	Total	%
Arts & Social Sciences	210	15%	Law	51	4%
Science & Mathematics	182	13%	Hospitality, Catering & Tourism	46	3%
Administration & Management	130	9%	Construction	45	3%
Health & Medicine	110	8%	Communications & Media	39	3%
Performing Arts	108	8%	Teaching	33	2%
Computing & ICT	89	6%	Social, Caring & Advisory Services	22	2%
Engineering	83	6%	Languages	18	1%
Sport, Leisure & Sport Science	71	5%	Sales & Marketing	14	1%
Finance	62	4%	Hairdressing & Beauty	9	1%
Art and Design	61	4%	Other Courses	7	1%

## Skills Development Scotland Glasgow City Council School Leaver Destination Report 2009-10

**Table 15: Further Education Course Information**

Course Area	Total	%	Course Area	Total	%
General Education (Highers, etc)	201	15%	Computing & ICT	64	5%
Social, Caring & Advisory Services	160	12%	Health & Medicine	39	3%
Hairdressing & Beauty	120	9%	Communications & Media	39	3%
Construction	114	8%	Garage Services	30	2%
Sport, Leisure & Sport Science	102	7%	Arts & Social Sciences	21	2%
Art and Design	102	7%	Personal Dev & Prep Courses	19	1%
Hospitality, Catering & Tourism	93	7%	Animals, Land & Environment	17	1%
Admin & Management	81	6%	Science & Mathematics	15	1%
Performing Arts	72	5%	Finance	10	1%
Engineering	67	5%	Other Courses	18	1%

This is the 3<sup>rd</sup> year that SDS has gathered fuller data, across Scotland, about the course areas entered by school leavers. There has been no change to the top 5 higher education course areas entered by leavers from last year to this year. The actual number of leavers entering higher education has remained relatively static, however, there has been around a 2% rise in the percentage of leavers entering arts & social sciences and science and mathematics. The actual number of leavers entering admin, management & business, health & medicine and performing arts related courses has changed little.

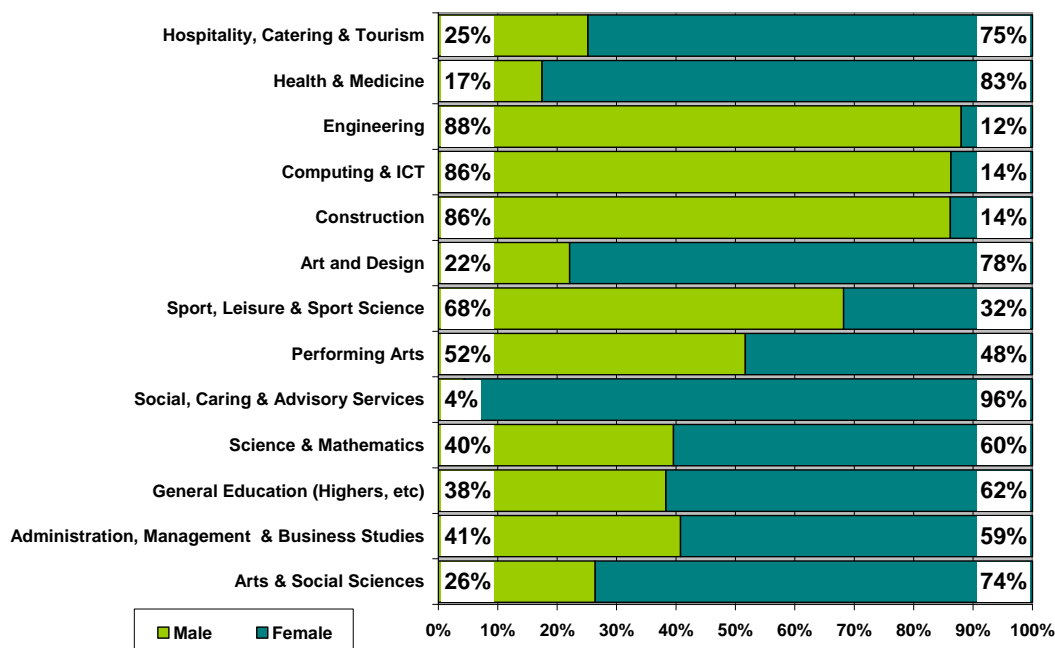
Mirroring the situation within higher education, the 4 most popular subject areas entered by leavers in further education have remained the same as last year. However, the number of leavers entering further education has declined this year by around 10% which has impacted on the number of leavers entering the subject areas of hairdressing & beauty and construction. There has been a 27% and 29% decline respectively in the actual number of leavers entering these course areas.

**Table 16: Course Information by Gender**

Course Area	Male		Female	
	Total	%	Total	%
Arts & Social Sciences	61	5%	170	11%
Administration & Management	86	7%	125	8%
General Education (Highers, etc)	77	7%	124	8%
Science & Mathematics	78	7%	119	7%
Social, Caring & Advisory Services	8	1%	174	11%
Performing Arts	93	8%	87	5%
Sport, Leisure & Sport Science	118	10%	55	3%
Art and Design	36	3%	127	8%
Construction	137	12%	22	1%
Computing & ICT	132	11%	21	1%
Engineering	132	11%	18	1%
Health & Medicine	26	2%	123	8%
Hospitality, Catering & Tourism	35	3%	104	7%
Hairdressing & Beauty	*	*	127	8%
Communications & Media	44	4%	34	2%
Finance	32	3%	40	3%
Law	19	2%	36	2%
Teaching	*	*	28	2%
Garage Services	29	2%	*	0%
Animals, Land & Environment	*	*	16	1%
Personal Dev & Prep Courses	11	1%	8	1%
Languages	*	*	14	1%
Other Course areas	14	1%	17	1%

Data that is less than 5 is suppressed for disclosure reasons

Table 17: Gender split within the course areas in both FE/HE



There has been no change in comparison to last year with the four most popular course areas for male leavers being construction, computing & IT, engineering and sport & leisure. As above, the difference is witnessed in the actual number of male leavers who have entered the most popular course area of construction. There has been a 23% decline in the actual number of male leavers entering construction related courses even though there has been only been a 9% decline in the actual number entering HE or FE.

The most popular course area for female leavers is Social and caring related courses which is the same as last year. However, hairdressing and beauty related courses have fallen from being the 2<sup>nd</sup> most popular subject area in 2008-09 to being the 4<sup>th</sup> most popular. The actual number of leavers entering hair & beauty related course has declined by 25%, this year in comparison to last year.

The most popular area for all leavers is arts and social sciences with the majority of entrants being female (74%). Subjects in engineering (90% male entrants) and construction (91% male entrants) remain male dominated although there are a higher proportion of females studying in these related courses than the national average. Social/caring related courses remain female dominated.

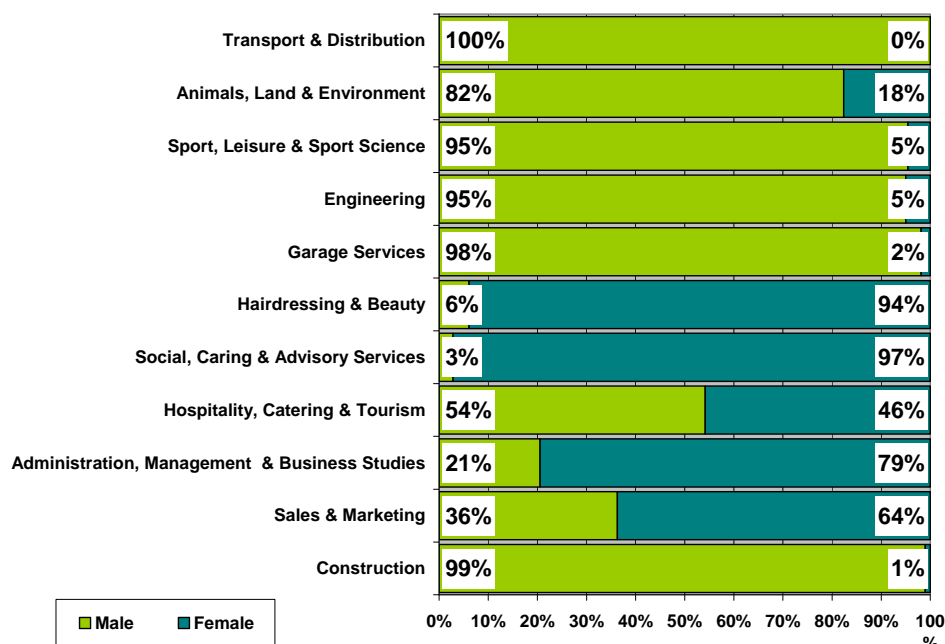
## Section 2.2: Employment

**Employment:** This category includes those who are employed and who are in receipt of payment from their employers. It includes young people undertaking training in employment through Skillseekers and Modern Apprenticeships. **835** young people entered Employment and analysis can be provided on **98.8% (825)** of those entering employment for whom we hold information about the occupational area entered.

**Table 18: Those entering Employment by Occupational Area**

Occupational Area	Male		Female	
	Total	%	Total	%
Construction	194	41%	*	1%
Sales & Marketing	45	10%	79	22%
Administration, Management & Business Studies	22	5%	85	24%
Hospitality, Catering & Tourism	39	8%	33	9%
Social, Caring & Advisory Services	*	0%	69	19%
Hairdressing & Beauty	*	1%	62	17%
Garage Services	53	11%	*	0%
Engineering	38	8%	*	1%
Sport, Leisure & Sport Science	21	4%	*	0%
Animals, Land & Environment	14	3%	*	1%
Transport & Distribution	15	3%	0	0%
Finance	*	1%	6	2%
Other Employment areas	19	4%	12	3%

**Table 19: Gender split within the top employment areas**



The most popular area of employment entered by all school leavers continues to be construction with around a quarter of school leavers who enter employment taking up a position in this industry and it accounts for **41%** of male leavers who leave school to take up employment. It is a male dominated occupational area with **99%** of entrants from Glasgow being male. Administration related roles have replaced sales occupations as the most popular occupational area that female leavers gain entry to. There is still a gender bias in the occupational areas of construction; engineering and garage services with the majority of entrants being male whereas hairdressing and social caring roles remain female dominated.

## Section 3: Other Destinations

School leavers who do not achieve a positive destination on leaving school are known as the MCMC group and are key customers for Skills Development Scotland and our partner organisations. The SLDR is a snapshot in time and should only be used as an indicator.

**Unemployed and seeking employment or training:** This category includes those who are in contact with SDS and are known by them to be seeking employment or training. This is based on regular contact between SDS and the client. This does not refer to the definition of 'unemployed' used by the Benefits Agency to calculate published unemployment rates. In 2009-10 it also included those individuals undertaking personal skills development<sup>v</sup>. There were **54** leavers who were in this status which equates to **8%** of the unemployed seeking cohort.

**Unemployed and not seeking employment or training:** This category includes all those individuals who are not seeking employment or training for a range of reasons. These individual circumstances may involve sickness, prison, pregnancy, caring for children or other dependents or taking time out.

### Section 3.1 Unemployed Seeking

The table provides a comparison of the percentage of unemployed seeking clients with specific characteristics as opposed to the rate of the full SLDR cohort

**Table 20: Client Characteristics**

Characteristics	% of Full SLDR	% of Unemployed Seeking
<b>Gender</b>		
Male	49%	57%
Female	51%	43%
<b>Ethnic Background</b>		
White	87%	89%
White – Other	1%	1%
Asian, Asian Scottish or Asian British	8%	6%
Mixed or Multiple Ethnic Groups	0%	*
Black, Black Scottish or Black British	1%	*
Other Ethnic Group	1%	*
Not known / Disclosed	2%	3%
<b>Stage Left School</b>		
Statutory Summer Leaver	18%	33%
Statutory Winter Leaver	15%	28%
Post Statutory Leaver	67%	39%
<b>Qualifications on Leaving School<sup>vi</sup></b>		
Access 1 / No formal Qualifications	1%	4%
Access 2&3/Foundation Stand. Grade	5%	12%
General Standard Grade/ Intermediate1	21%	35%
Credit Standard Grade/ Intermediate 2	29%	25%
Highers/Advanced Higher	39%	12%
Unknown	4%	13%

**Table 20: Client Characteristics (cont)**

Characteristics		% of Full SLDR	% of Unemployed Seeking
<b>Health And Additional Support Needs</b>			
Looked After at Home/ Looked after away from home <sup>vii</sup>		6%	14%
Additional Support Plan Recorded <sup>viii</sup>		15%	21%
Health Factor/Additional Support Need Identified <sup>ix</sup>		13%	17%
<b>SIMD Decile Ranking /Deprivation (SIMD 2009)</b>			
<b>Most deprived</b>	1	41%	54%
	2	16%	16%
	3	10%	9%
	4	7%	6%
	5	5%	4%
	6	6%	4%
	7	5%	2%
	8	5%	3%
	9	4%	2%
	<b>Least Deprived</b>	10	2%
	Unknown	0%	0%

- Although male leavers account for only **49%** of the leaving cohort they account for almost **57%** of leavers reported as unemployed seeking
- Statutory winter leavers represent only **15%** of the whole SLDR cohort but are disproportionately represented within the leavers reported as unemployed seeking at **28%**. A similar situation is evident for statutory summer leavers with **18%** and **33%** respectively.
- The largest proportion of unemployed seeking leavers have general level standard grades and those with this level or below are disproportionately represented in the unemployed seeking cohort.
- Leavers who had a period of being looked after at home or away from home are also disproportionately represented within the leavers reported as unemployed seeking as they represent **6%** of the total cohort but account **14%** of the unemployed seeking cohort.

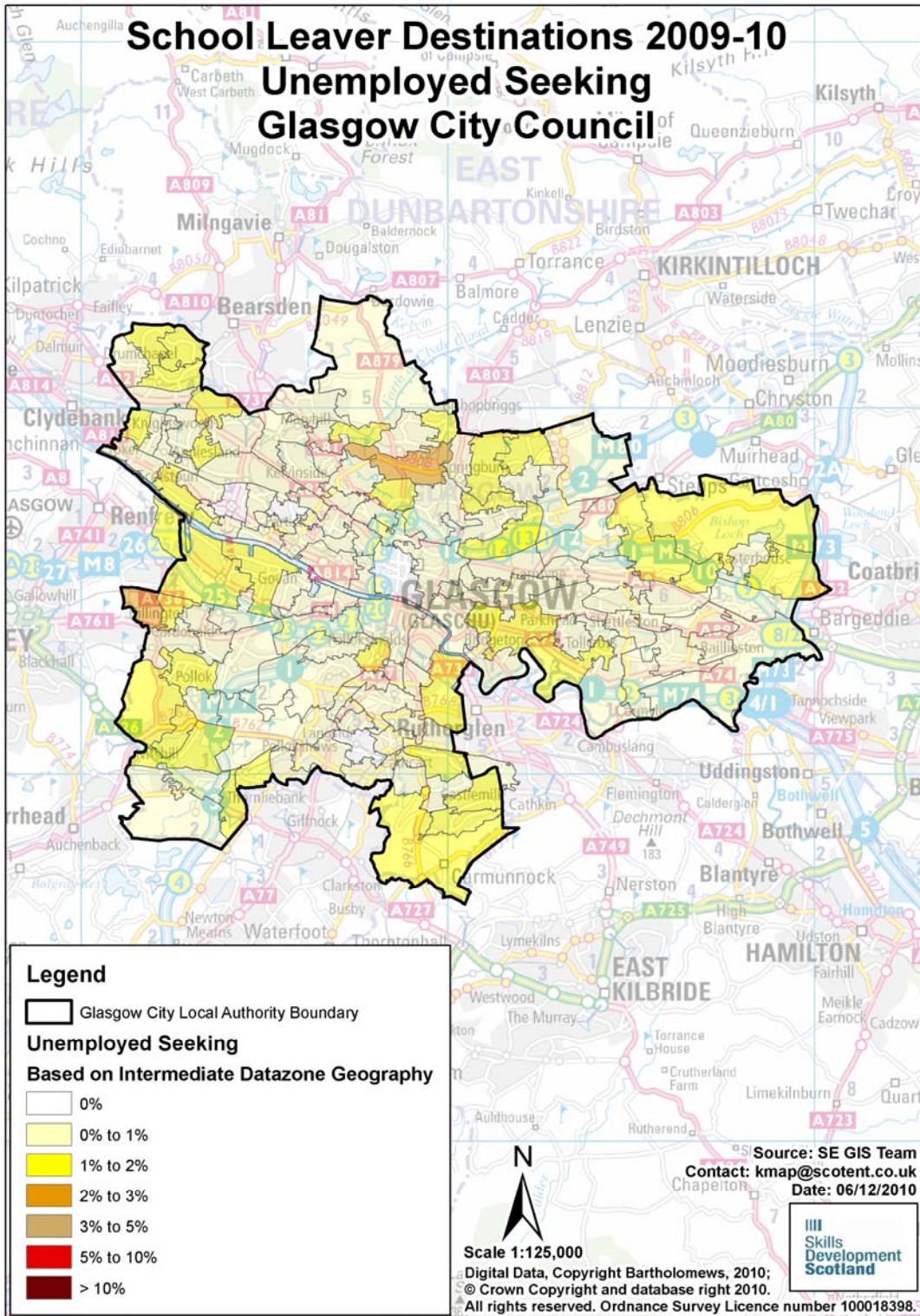
**Table 21: Leavers by Intermediate Data zone**

There were **640** leavers from Glasgow City secondary schools who were reported as unemployed seeking in the SLDR. By using postcodes, we were able to identify areas within the authority where unemployed school leavers were living. However, at the snapshot, **29** of the leavers were living outside the local authority area but a further **65** unemployed seeking school leavers from other local authority schools were residing within Glasgow City boundaries. The analysis below is based on **676** leavers residing in the authority and who SDS held postcode information for. The table below shows the intermediate data zones with the highest percentage of unemployed leavers.

Intermediate Data zone <sup>x</sup>	Total	%	Intermediate Data zone	Total	%
Possil Park	2%	16	Balornock	2%	11
Penilee	2%	15	Drumchapel South	2%	11
Blairdardie East	2%	12	Milton East	2%	11
Nitshill	2%	12	Carnwadric West	1%	10
Parkhead West and Barrowfield	2%	12	Crookston South	1%	10
Toryglen and Oatlands	2%	12	Darnley East	1%	10

**Table 22: Destinations of School Leavers: % Unemployed Seeking, 2009/10**

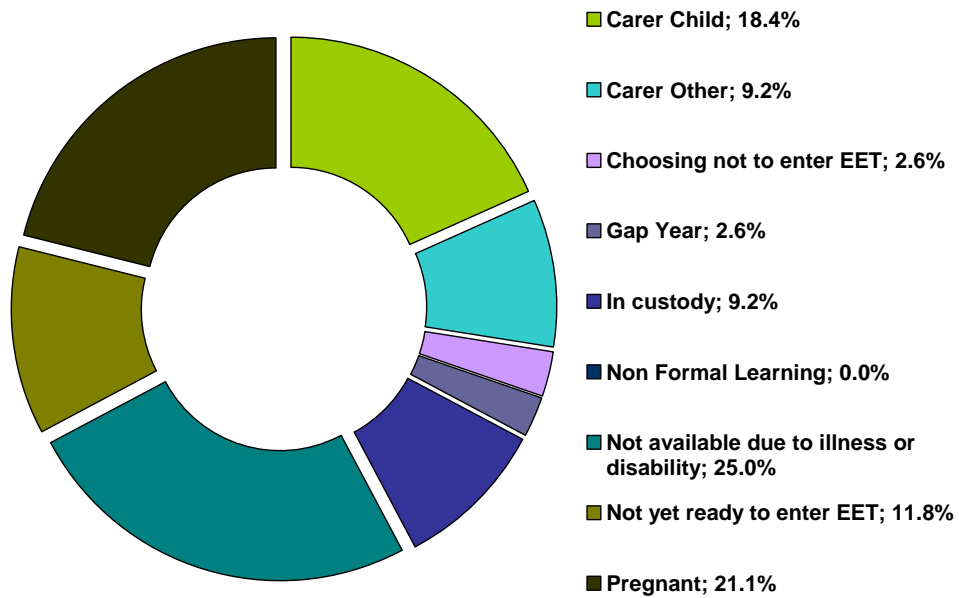
The map shows the intermediate data zones where the **676** leavers who were residing within the local authority boundary reside. Percentages have been calculated as a proportion of the number of leavers reported.



### Section 3.2 Unemployed NOT Seeking

There were **76** school leavers within this category. The highest proportion of leavers reported as economically inactive are those who were not available due to illness. Those leavers who were either pregnant or had caring responsibilities for a child represent **39.5%** of the unemployed seeking cohort.

**Table 23: Individual Circumstances of those Unemployed NOT Seeking**



### Section 3.3 Unknown

There were 58 school leavers whose destination was unknown at the time of SLDR.

## Skills Development Scotland Glasgow City Council School Leaver Destination Report 2009-10

**Table 24: Destinations by School, Percentage**

School	Higher Education	Further Education	Training	Employment	Voluntary Work	Unemployed Seeking	Unemployed Not Seeking	Not Known	Total Leavers	% Pos	% Other
All Saints Secondary School	23.3%	34.7%	9.3%	18.7%	2.6%	9.8%	1.6%	0.0%	193	88.6%	11.4%
Bannerman High School	37.7%	22.3%	5.5%	22.7%	0.0%	10.5%	0.9%	0.5%	220	88.2%	11.8%
Bellahouston Academy	32.7%	35.3%	6.0%	12.7%	0.0%	12.0%	1.3%	0.0%	150	86.7%	13.3%
Castlemilk High School	21.6%	29.9%	16.5%	23.7%	1.0%	6.2%	1.0%	0.0%	97	92.8%	7.2%
Cleveden Secondary School	26.5%	25.4%	4.8%	20.6%	0.0%	19.6%	0.5%	2.6%	189	77.2%	22.8%
Drumchapel High School	9.0%	30.6%	20.7%	9.9%	0.0%	27.0%	1.8%	0.9%	111	70.3%	29.7%
Eastbank Academy	19.7%	31.4%	12.7%	24.0%	0.0%	8.3%	3.9%	0.0%	229	87.8%	12.2%
Glasgow Gaelic Secondary School	*	*	*	*	*	*	*	*	1	*	*
Govan High School	5.1%	26.6%	16.5%	25.3%	0.0%	16.5%	10.1%	0.0%	79	73.4%	26.6%
Hillhead High School	30.5%	22.9%	9.2%	7.6%	0.0%	25.2%	2.3%	2.3%	131	70.2%	29.8%
Hillpark Secondary School	25.2%	28.7%	5.9%	19.3%	0.0%	17.3%	0.5%	3.0%	202	79.2%	20.8%
Holyrood Secondary School	37.6%	32.9%	7.3%	12.8%	0.6%	7.6%	0.9%	0.3%	343	91.3%	8.7%
Hyndland Secondary School	44.6%	25.7%	2.0%	15.5%	0.7%	8.1%	2.0%	1.4%	148	88.5%	11.5%
John Paul Academy	21.4%	26.5%	12.8%	15.4%	0.0%	18.8%	2.6%	2.6%	117	76.1%	23.9%
Jordanhill School	82.4%	8.8%	1.0%	3.9%	0.0%	3.9%	0.0%	0.0%	102	96.1%	3.9%
Kings Park Secondary School	33.0%	28.8%	6.8%	14.1%	0.0%	12.6%	1.0%	3.7%	191	82.7%	17.3%
Knightswood Secondary School	29.2%	26.4%	6.4%	21.2%	0.0%	15.6%	0.4%	0.8%	250	83.2%	16.8%
Lochend Community High School	13.6%	33.6%	16.8%	15.2%	0.0%	20.0%	0.8%	0.0%	125	79.2%	20.8%
Lourdes Secondary School	28.8%	26.5%	6.2%	15.9%	0.0%	16.4%	0.9%	5.3%	226	77.4%	22.6%
Notre Dame High School	51.6%	24.6%	3.2%	10.3%	0.8%	9.5%	0.0%	0.0%	126	90.5%	9.5%
Rosshall Academy	21.0%	36.2%	10.0%	13.8%	0.0%	17.6%	0.5%	1.0%	210	81.0%	19.0%
Shawlands Academy	39.8%	30.3%	4.3%	10.9%	0.0%	10.4%	2.8%	1.4%	211	85.3%	14.7%
Smithycroft Secondary School	18.9%	27.6%	24.4%	18.9%	0.8%	6.3%	3.1%	0.0%	127	90.6%	9.4%
Springburn Academy	18.5%	33.7%	7.9%	14.6%	0.0%	21.9%	2.2%	1.1%	178	74.7%	25.3%
St Andrew's Secondary School	29.5%	22.9%	18.2%	22.9%	0.3%	5.1%	1.0%	0.0%	292	93.8%	6.2%
St Margaret Mary's Secondary School	10.8%	26.5%	21.7%	18.1%	0.0%	16.9%	0.0%	6.0%	83	77.1%	22.9%
St Mungo's Academy	25.6%	25.6%	11.6%	25.6%	2.3%	6.2%	2.3%	0.8%	129	90.7%	9.3%
St Paul's High School	13.3%	31.3%	24.0%	18.0%	0.0%	10.7%	2.7%	0.0%	150	86.7%	13.3%
St Roch's Secondary School	16.2%	40.0%	12.4%	14.3%	1.0%	15.2%	1.0%	0.0%	105	83.8%	16.2%
St Thomas Aquinas Secondary School	38.1%	27.9%	4.1%	15.6%	0.0%	12.2%	0.7%	1.4%	147	85.7%	14.3%
Whitehill Secondary School	18.5%	25.9%	21.0%	16.0%	0.0%	16.0%	2.5%	0.0%	81	81.5%	18.5%
<b>Glasgow City Council</b>	<b>28.4%</b>	<b>28.6%</b>	<b>10.1%</b>	<b>16.9%</b>	<b>0.3%</b>	<b>12.9%</b>	<b>1.5%</b>	<b>1.2%</b>	<b>4,943</b>	<b>84.3%</b>	<b>15.7%</b>

## Background Notes:

<sup>i</sup> **Positive Destinations:** includes higher education, further education, training, employment and voluntary work. See text above for explanation of each destination heading.

<sup>ii</sup> **The Scottish Index of Multiple Deprivation (SIMD):** SIMD identifies small area concentrations of multiple deprivation across all of Scotland in a consistent way. SDS uses a file created by Scottish Neighbourhood Statistics to identify SIMD based on an individual leaver's postcode. The leaver's postcode is based on the last known address of the leaver as recorded on our client management system. Where there were gaps in the data held on our CMS, the last known address supplied in the annual import of pupil details has been used. As the last known postcode is used it may be that a leaver from one local authority was living in another local authority at the time of the return. Therefore, the SIMD relates to where a leaver was living and not the concentration of SIMD within a local authority.

<sup>iii</sup> **Stage of Leaving:** A **statutory summer leaver** is a school leaver who chooses to leave school at the earliest opportunity (31<sup>st</sup> May) when they become eligible to leave school i.e. their 16<sup>th</sup> birthday falls on or between 1<sup>st</sup> March and 30<sup>th</sup> September in their year of leaving. A **statutory winter leaver** is a school leaver who chooses to leave school at the earliest opportunity when they become eligible to leave school i.e. their 16<sup>th</sup> birthday falls between 1<sup>st</sup> October and the last day in February. A **post statutory leaver** is a school leaver who chose to remain at school past their statutory leave date e.g. a winter leaver who would have been eligible to leave at the winter leave date but choose to remain at school until the summer leave date. Included in this group are leavers who have past their statutory leave date and have left school at any stage throughout the year.

<sup>iv</sup> **Institutions:** through our follow up of leavers, we confirm Further and Higher Education destinations and as part of the process we request further information about the institution a leaver is attending. This is not a requirement of the Scottish Government and the information displayed is based on the recorded detail on Insight.

<sup>v</sup> **Personal Skills Development:** - Some leavers are not yet ready, or in a position to make an immediate transition to a formal positive destination. In such cases leavers may participate in learning opportunities / personal and social development activities with the aim of improving their confidence and employability. These programmes can be viewed as a stepping stone towards a more formal positive destination. They are often delivered by a community learning and development or third sector organisation and can include the activity agreement pilots. It was agreed, with the Scottish Government, that individuals undertaking these activities would be reported within the unemployed seeking SLDR category.

<sup>vi</sup> **Qualifications on leaving school:** This information is based on pre-appeal information from the Scottish Qualifications Agency where SDS received information about a leaver's qualifications and a robust match of records was made. Where no match was made the qualification level has been gathered through our interaction with individuals.

<sup>vii</sup> **Looked After at Home/ Looked after away from home:** This refers to recent school leavers that SDS has recorded information that they had an episode of being looked after at home or looked after away from home. This information is gathered in a variety of ways including local SDS contact with Social Work departments, data received through the school import process or via direct contact with individuals. It is recognised that this information may not be complete when compared with similar data from social work services departments. However SDS is working with the Scottish Government and local authorities to look at improving the sharing of information in respect of these young people therefore the figures used are indicative.

<sup>viii</sup> **Additional Support Plan Recorded:** SDS receives data from all local authority schools and school centres with pupils in stages S1-S6 or special schools to import into our client management system. We receive information about those who have co-ordinated support plans (CSP) and individualised educational programmes. We also gather information directly from individuals and via our ongoing work with schools. We acknowledge that the data may vary from that held by local authorities therefore the figures used are indicative.

<sup>ix</sup> **Health Factor/Additional Support Need Identified:** SDS receives data from all local authority schools and school centres with pupils in stages S1-S6 or special schools to import into our client management system. We receive information about those who have identified additional support needs. We also gather information directly from individuals and via our ongoing work with schools. We acknowledge that the data may vary from that held by local authorities therefore the figures used are indicative.

<sup>x</sup> **Intermediate Data zone Geography:** The data zone is the key small area statistical geography in Scotland. The intermediate geography is built up from data zones and can be used to disseminate statistics that are not suitable for release at the data zone level. Due to the small number of individuals it has been decided to use the intermediate level geography. There are 1235 intermediate zones in Scotland, containing on average 4000 household residents and these have been designed to respect local authority boundaries as at 2001 Census.