

# **School Leaver Destination Report**

**2009 – 2010**

**Fife Council**

## Contents

<b>Section 1: Overview – Main Findings</b> .....	<b>3</b>
Table 1: Destination Totals .....	4
Table 2: Local Authority Comparison to Scotland .....	4
<b>Section 1.1 - Annual Trends</b> .....	<b>5</b>
Table 3: Trends 2000 – 2010 of Positive Destinations .....	5
Table 4: Trends 2000 – 2010 of Other Destinations .....	5
Table 5: Destinations from 2000 to 2010.....	6
<b>Section 1.2: Client Characteristics</b> .....	<b>6</b>
Table 6: Destination split by Gender.....	6
Table 7: Gender split within each destination .....	7
Table 8: Destination by SIMD .....	7
Table 9: Destination by Stage Left School. ....	8
<b>Section 2: Positive Destinations</b> .....	<b>8</b>
<b>Section 2.1 Higher and Further Education</b> .....	<b>8</b>
Table 10: HE Entrants by Institution Type.....	9
Table 11: HE Students by Institution.....	9
Table 12: HE Students by FE Colleges .....	9
Table 13: FE Students by FE Colleges .....	9
Table 14: Higher Education Course Information .....	9
Table 15: Further Education Course Information .....	10
Table 16: Course Information by Gender .....	10
Table 17: Gender split within the course areas in both FE/HE .....	11
<b>Section 2.2: Employment</b> .....	<b>11</b>
Table 18: Those entering Employment by Occupational Area .....	12
Table 19: Gender split within the top employment areas .....	12
<b>Section 3: Other Destinations</b> .....	<b>13</b>
<b>Section 3.1 Unemployed Seeking</b> .....	<b>13</b>
Table 20: Client Characteristics .....	13
Table 21: Leavers by Intermediate Data zone .....	14
Table 22: Destinations of School Leavers: % Unemployed Seeking, 2009/10 .....	15
Table 23: Individual Circumstances of those Unemployed NOT Seeking .....	16
<b>Section 3.3 Unknown</b> .....	<b>16</b>
Table 24: Destinations by School, Percentage .....	17
Background Notes: .....	18

## Background

## Skills Development Scotland Fife Council School Leaver Destination Report 2009-10

The School Leaver Destination Return (SLDR) is a statistical return undertaken by Skills Development Scotland (SDS) on behalf of the Scottish Government. The Return is based on a follow up of young people who left school between the 1st of August 2009 and the 31st of July 2010. This exercise was carried out during the month of September 2010.

The Scottish Government use the data produced from the Return to report against the National Indicator and target, “increase the proportion of school leavers (from Scottish publicly funded schools) in positive and sustained destinations (FE, HE, employment or training)”. Partners, particularly Local Authorities, use the data to inform initiatives developed as part of the More Choices More Chances Strategy, to evidence the success of initiatives, measure progress against targets, and to identify areas to target resources to improve the post school outcomes for young people.

### Methodology

The return is carried out during the month of September with staff across Skills Development Scotland following up over 55,000 school leavers. Destinations are confirmed throughout the follow up period and the destination that is reported is the destination that is known at the snapshot date. This year, we reported the information as known to us on 2nd October 2010. Destinations of young people are fluid in nature, therefore, it is possible that a leaver entered employment or training on leaving school but by the time the snapshot was taken this destination may have changed to another destination.

The information that is gathered is recorded within the SDS CMS system (Insight) which enables us to produce MIS reports and populate the data fields to be sent to the Government. This data is transferred at an individual level and undergoes a matching & validation process until a cohort is agreed. This allows the government’s analytical services unit to match the client’s individual outcome with other indicators such as social economic background, additional support needs and stage of leaving, etc. All information in this report, however, is based upon data held within the SDS Insight database which has been analysed to produce the graphs and tables contained within this report.

### Analysis

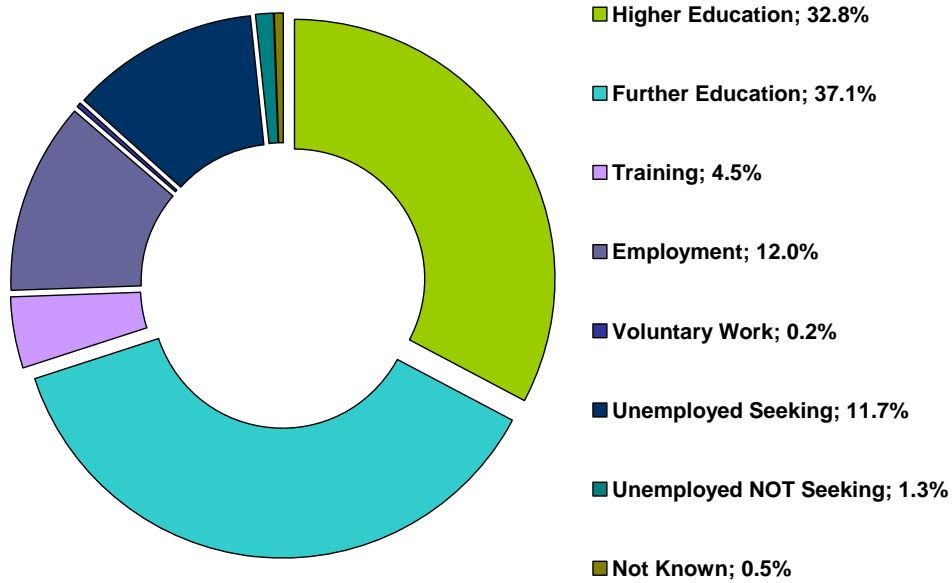
Only leavers from publicly funded secondary schools are within the scope of the SLDR. This report relates to **3,979** leavers from publicly funded secondary schools. This relates to approximately a **2%** increase in the number of leavers reported in the SLDR in 2008-09.

## Section 1: Overview – Main Findings

- Overall the percentage of leavers entering a positive destination<sup>i</sup> increased by **0.9%** to **86.6%** but this is below the national average of **86.8%**.
- In comparison to 2008-09, the percentage of leavers entering higher education has increased to **32.8%**, a slight rise of **0.9%**. Despite this rise, the percentage of leavers entering higher education is the 9<sup>th</sup> lowest percentage in Scotland a drop of 2 places from the 11<sup>th</sup> lowest percentage in Scotland last year.
- In comparison to higher education the percentage of leavers entering further education is the 2<sup>nd</sup> highest in Scotland. However, there was only an increase of **0.1%** from **37%** last year to **37.1%** this year.
- The percentage of leavers entering employment has fallen again this year from **12.9%** in 2008-09 to **12%**, which is the 2<sup>nd</sup> lowest percentage in Scotland.
- The percentage of leavers who are unemployed seeking has decreased to **11.7%**, around **0.4%** higher than the national average and **0.4%** lower than last year.
- School leavers whose destination is unknown to SDS has fallen to its lowest recorded level at **0.5%**.

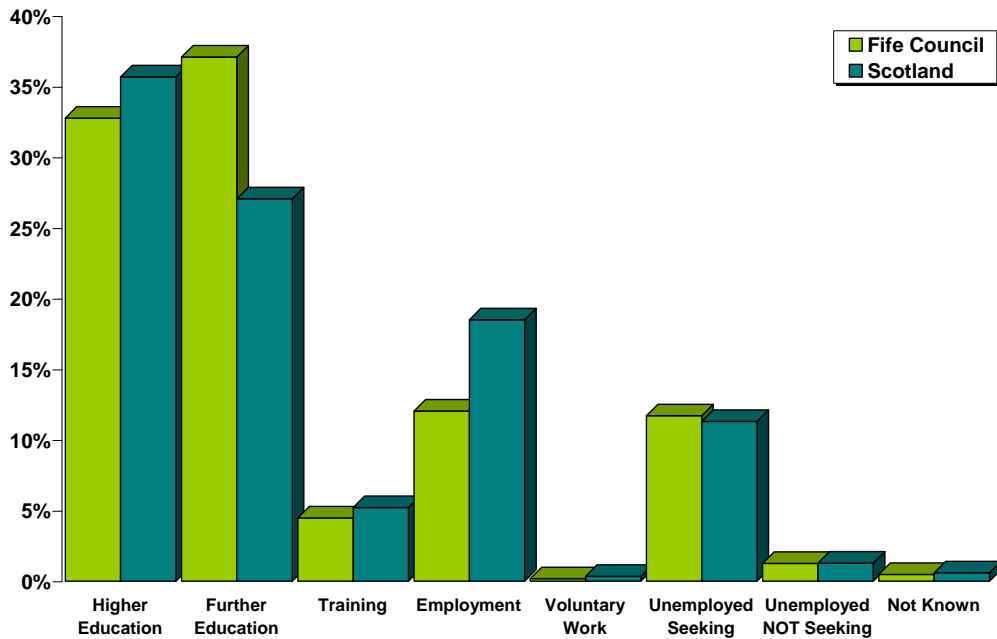
**Skills Development Scotland  
Fife Council School Leaver Destination Report 2009-10**

**Table 1: Destination Totals**



Area	Total Leavers	Higher Education	Further Education	Training	Employment	Voluntary Work	Unemployed Seeking	Unemployed NOT Seeking	Not Known
Fife Council	<b>3,979</b>	<b>32.8%</b> 1,304	<b>37.1%</b> 1,476	<b>4.5%</b> 178	<b>12.0%</b> 479	<b>0.2%</b> 7	<b>11.7%</b> 466	<b>1.3%</b> 50	<b>0.5%</b> 19
Scotland	<b>54,097</b>	<b>35.7%</b> 19,309	<b>27.1%</b> 14,637	<b>5.2%</b> 2,822	<b>18.5%</b> 10,005	<b>0.3%</b> 187	<b>11.3%</b> 6,117	<b>1.3%</b> 696	<b>0.6%</b> 324

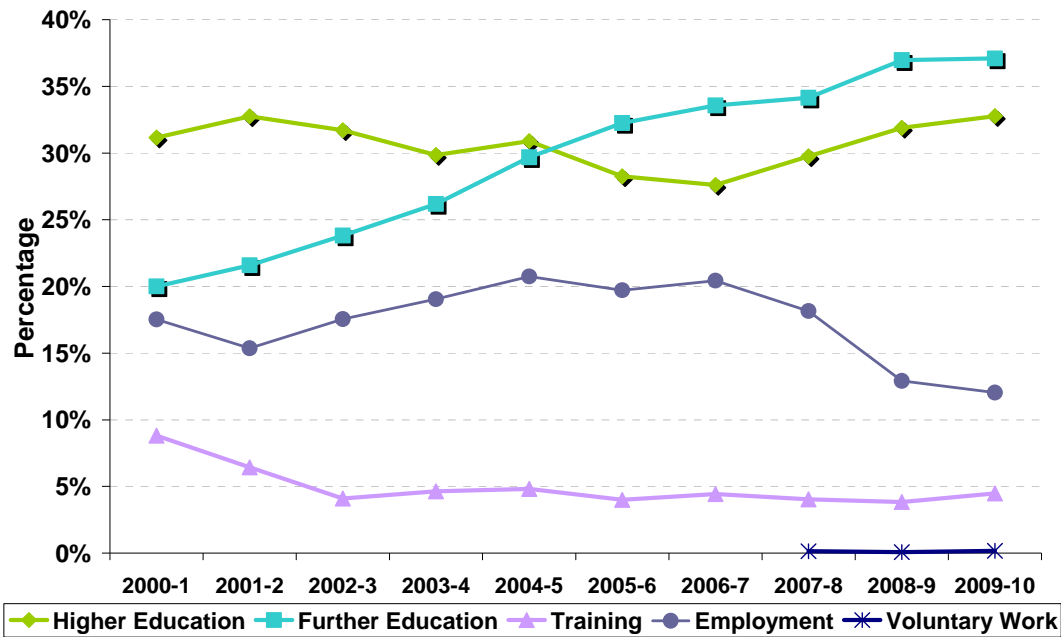
**Table 2: Local Authority Comparison to Scotland**



**Skills Development Scotland  
Fife Council School Leaver Destination Report 2009-10**

**Section 1.1 - Annual Trends**

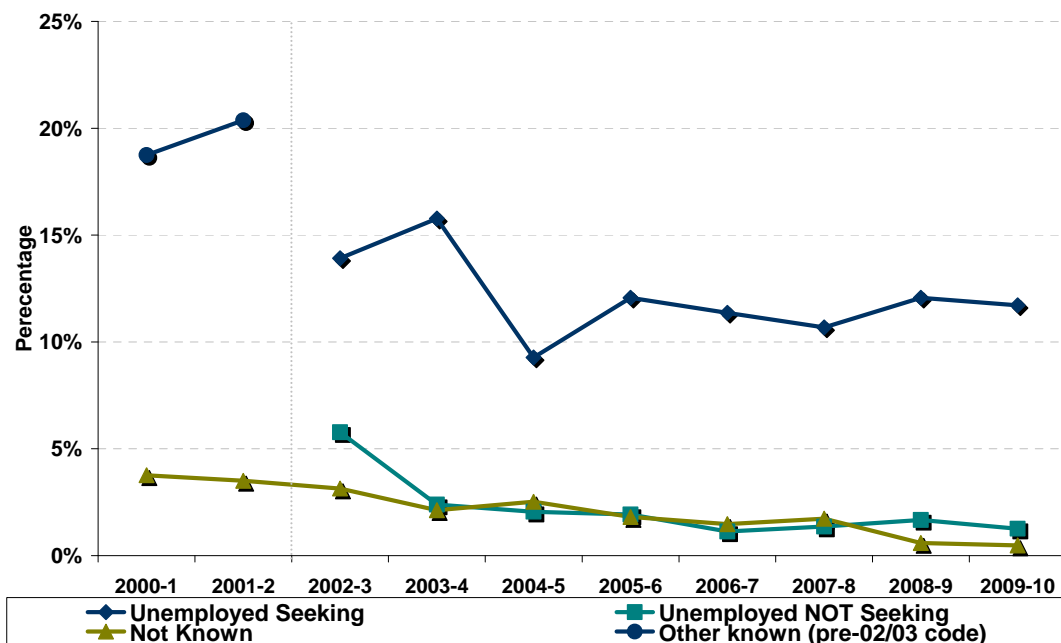
**Table 3: Trends 2000 – 2010 of Positive Destinations**



Note: Voluntary Work has been included as a separate destination category since the 2007- 08 SLDR return but was reported within the unemployed not seeking category previously.

In 2001-2 the percentage of leavers entering higher education reached a high of **32.8%** but by 2006-07, this had dropped to its lowest level in ten years at **27.6%**. Since 2006-07, however, the percentage has been steadily rising and in 2009-10 it is now back to **32.8%**. In comparison, the percentage of leavers entering further education has risen year on year and is now at its highest level in a decade at **37.1%**, **17.1%** higher than 10 years ago. There has been a sharp decline in percentage of leavers entering employment since 2006-7 and this year this trend has continued to reach the lowest level in a decade at **12%** which is **8.7%** lower than in 2004-05 when the percentage was at its highest (**20.7%**).

**Table 4: Trends 2000 – 2010 of Other Destinations**



## Skills Development Scotland Fife Council School Leaver Destination Report 2009-10

From the high point in 2003-4 (**15.8%**), the proportion of leavers reported as unemployed seeking dropped dramatically the next year to its lowest level of **9.3%**. Since then the percentage has fluctuated and is now **2.4%** higher than the lowest level at **11.7%**. The percentage of leavers unknown has fallen to the lowest level ever at **0.5%**, which is **3.3%** lower than ten years ago.

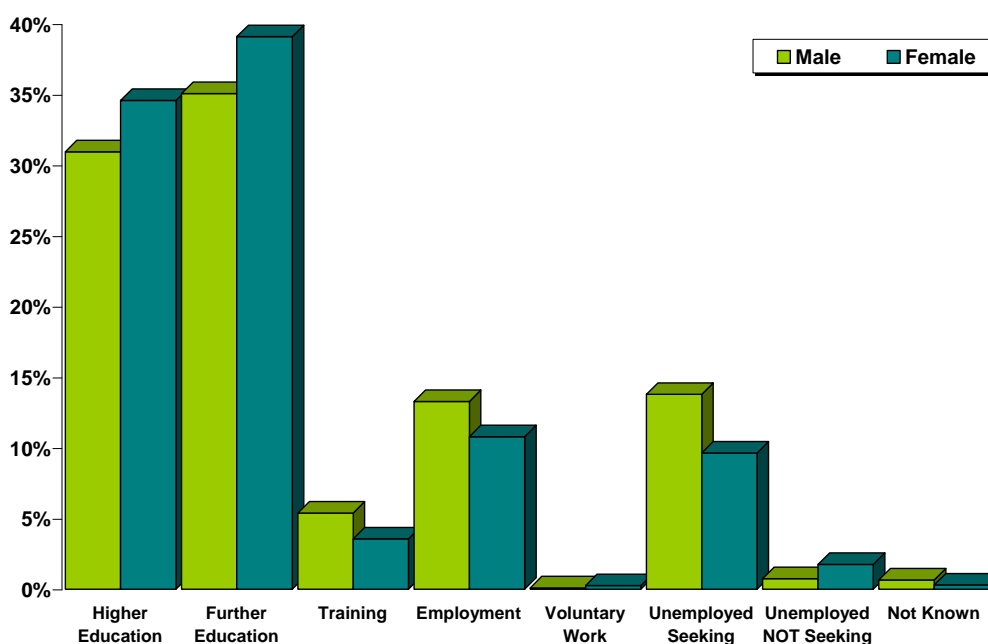
**Table 5: Destinations from 2000 to 2010**

Year	Total Leavers	Higher Education	Further Education	Training	Employment	Voluntary Work	Unemployed Seeking	Unemployed NOT Seeking	Not Known	Other Known
2000-1	4,150	31.2%	20.0%	8.8%	17.5%				3.8%	18.7%
2001-2	4,030	32.8%	21.6%	6.4%	15.4%				3.5%	20.4%
2002-3	4,175	31.7%	23.8%	4.1%	17.6%		13.9%	5.8%	3.1%	
2003-4	4,274	29.9%	26.2%	4.6%	19.0%		15.8%	2.4%	2.1%	
2004-5	4,087	30.9%	29.7%	4.8%	20.7%		9.3%	2.1%	2.5%	
2005-6	4,261	28.3%	32.2%	4.0%	19.7%		12.1%	1.9%	1.8%	
2006-7	4,155	27.6%	33.6%	4.4%	20.4%		11.4%	1.1%	1.5%	
2007-8	4,120	29.8%	34.2%	4.0%	18.2%	0.1%	10.7%	1.4%	1.7%	
2008-9	3,888	31.9%	37.0%	3.8%	12.9%	0.1%	12.1%	1.7%	0.6%	
2009-10	3,979	32.8%	37.1%	4.5%	12.0%	0.2%	11.7%	1.3%	0.5%	

**Note:** Prior to 2002-03 both the unemployed seeking and unemployed not seeking categories were reported in a separate category called Other Known. This is reflected in the table and graph above.

### Section 1.2: Client Characteristics

**Table 6: Destination split by Gender**

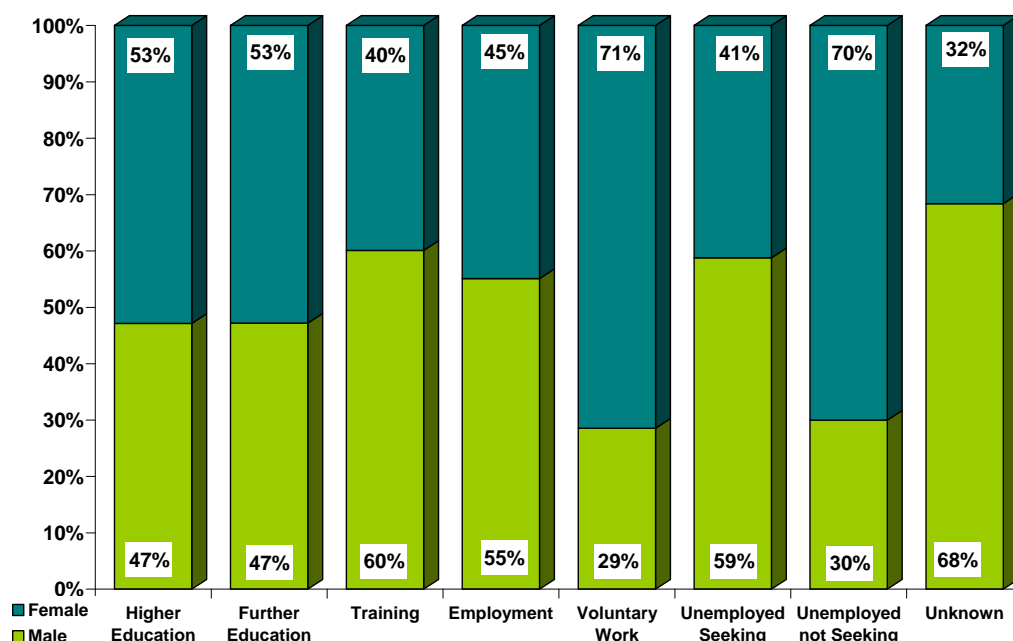


Year	Total Leavers	Higher Education	Further Education	Training	Employment	Voluntary Work	Unemployed Seeking	Unemployed NOT Seeking	Not Known
Male	1,987	31.0%	35.1%	5.4%	13.3%	0.1%	13.8%	0.8%	0.7%
Female	1,992	34.6%	39.1%	3.6%	10.8%	0.3%	9.6%	1.8%	0.3%

Female leavers (**88.3%**) are more likely than male leavers (**84.8%**) to enter positive destinations on leaving school. The proportion of female leavers who continue their education in either higher or further education is **73.7%** compared to **66%** of males, **7.7%** higher. The percentage of males entering employment and training (**18.7%**) is approx **4.3%** higher than that for females (**14.4%**). Males are more likely to become unemployed and seeking than females with over **59%** of leavers reported as unemployed seeking being male.

**Skills Development Scotland**  
**Fife Council School Leaver Destination Report 2009-10**

**Table 7: Gender split within each destination**



**Table 8: Destination by SIMD**

SIMD Decile <sup>ii</sup>	Most Deprived → Least Deprived										Unknown
	1	2	3	4	5	6	7	8	9	10	
Higher Education	9%	17%	20%	29%	27%	35%	42%	53%	47%	55%	*
Further Education	43%	44%	44%	39%	45%	37%	36%	24%	28%	25%	*
Training	10%	7%	8%	6%	4%	3%	*	2%	2%	*	*
Employment	13%	11%	12%	12%	11%	13%	12%	11%	15%	11%	*
Voluntary Work	*	*	*	*	*	*	*	*	*	*	*
Unemployed Seeking	22%	20%	14%	12%	12%	10%	8%	8%	5%	6%	*
U/E Not Seeking	2%	*	1%	2%	*	*	*	*	2%	*	*
Unknown	*	1%	*	*	*	*	*	*	*	*	*
<b>Positive Destinations</b>	<b>75%</b>	<b>78%</b>	<b>84%</b>	<b>85%</b>	<b>87%</b>	<b>89%</b>	<b>91%</b>	<b>91%</b>	<b>93%</b>	<b>92%</b>	<b>100%</b>
<b>Total</b>	<b>267</b>	<b>512</b>	<b>480</b>	<b>438</b>	<b>423</b>	<b>417</b>	<b>330</b>	<b>373</b>	<b>506</b>	<b>231</b>	<b>2</b>
<b>% of Total Leavers</b>	<b>7%</b>	<b>13%</b>	<b>12%</b>	<b>11%</b>	<b>11%</b>	<b>10%</b>	<b>8%</b>	<b>9%</b>	<b>13%</b>	<b>6%</b>	<b>0%</b>

Data & percentages based on less than 5 leavers have been suppressed due to disclosure reasons.

- Leavers who live in the least deprived areas are more likely to enter positive destinations on leaving school than those from the most deprived area. For example **92%** of those who live in SIMD 10 enter positive destinations whereas **75%** of those in SIMD 1 enter positive destinations. The percentage of positive destinations rise as you move through the SIMD areas from 1 – 10.
- The majority of leavers from every SIMD area continued their studies in further or higher education. The greatest proportion of leavers, from SIMD 1 to 6, continued their studies in further education and those from SIMD 7 to 10 continued their studies in higher education. In general leavers who live in the least deprived areas are more likely to enter Higher Education in comparison to leavers who live in the most deprived areas. The proportion of leavers entering higher education from the least deprived area (**55%**) is over five times the proportion for leavers from the most deprived areas (**9%**).
- Leavers from most deprived areas are more likely to enter training than leavers from the least deprived areas.

**Skills Development Scotland**  
**Fife Council School Leaver Destination Report 2009-10**

- Leavers from most deprived areas are more likely to be unemployed seeking than leavers from the least deprived areas. The proportion of leavers who become unemployed gradually decreases as you move through the SIMD areas from **22%** in SIMD 1 to **6%** in SIMD 10.

**Table 9: Destination by Stage Left School.**

Stage of Leaving <sup>iii</sup> Destination	Statutory Summer Leaver	Statutory Winter Leaver	Post Statutory Leaver
Higher Education	*	3%	46%
Further Education	57%	35%	32%
Training	10%	11%	2%
Employment	9%	18%	12%
Voluntary Work	*	*	0%
Unemployed Seeking	21%	27%	6%
Unemployed Not Seeking	2%	3%	1%
Unknown	*	2%	0%
Positive Destinations	77%	67%	92%
<b>Total Leavers</b>	716	489	2,774
<b>% of Total Leavers</b>	18%	12%	70%

Data & percentages based on less than 5 leavers have been suppressed due to disclosure reasons.

- It can be noted that the majority of school pupils choose to remain at school past their statutory leave date (**70%**) and this has a positive impact on their positive progression from school. Leavers who stay on past their statutory leave date are more likely to progress to positive outcomes on leaving school (**92%**) with the highest proportion entering higher education (**46%**).
- Statutory winter leavers are less likely to enter positive destinations (**67%**). However, the highest proportion is in further education (**35%**). Statutory winter leavers are just over four times more likely to be reported as unemployed seeking than a post statutory leaver.
- The majority of statutory summer leavers enter further education (**57%**) and just over 1 in 5 statutory summer leavers are reported as unemployed seeking.

## Section 2: Positive Destinations

### Section 2.1 Higher and Further Education

**Higher Education (HE):** This category includes leavers following HND (Higher National Diploma) or HNC (Higher National Certificate) courses, degree courses, courses for the education and training of teachers and higher level courses for professional qualifications. **32** young people with a deferred, unconditional place in higher education for next year have also been included in this year's figures.

**Further Education (FE):** This category includes leavers undertaking non advanced further education which is not higher education.

From those reported in the SLDR, **1,304** leavers entered Higher Education and **1,476** entered Further Education. Detailed analysis can be provided on **99.6% (2,770)** of this cohort for whom we hold information on institution and course chosen – Higher Education **99.8% (1,302)** & Further Education **99.5% (1,468)**.

**Skills Development Scotland**  
**Fife Council School Leaver Destination Report 2009-10**

**Table 10: HE Entrants by Institution Type**

Institution Type	Total	%
University / HE College	800	61%
FE College	477	37%
Other <sup>1</sup>	25	2%

<sup>1</sup> Other Category includes institutions out with Scotland and other private institutions

**Table 11: HE Students by Institution**

Institution <sup>iv</sup>	Total	%	Institution	Total	%
Dundee University	149	11%	Strathclyde University	37	3%
Edinburgh University	107	8%	The Robert Gordon University	34	3%
Abertay University Dundee	86	7%	St Andrews University	27	2%
Aberdeen University	74	6%	Queen Margaret University	19	1%
Glasgow University	71	5%	Glasgow Caledonian University	14	1%
Stirling University	62	5%	Outwith Scotland	24	2%
Napier University	53	4%	FE Colleges	477	37%
Heriot Watt University	50	4%	Other Institutions	18	1%

Institutions with less than 5 leavers are included in "Other Institutions" in the table above.

**Table 12: HE Students by FE Colleges**

Institution	Total	%	Institution	Total	%
Adam Smith College	320	25%	Elmwood College	10	1%
Carnegie College	79	6%	Edinburgh's Telford College	7	1%
Dundee College	29	2%	Other Institutions	20	2%
Perth College	12	1%			

Institutions with less than 5 leavers are included in "Other Institutions" in the table above.

**Table 13: FE Students by FE Colleges**

Institution	Total	%	Institution	Total	%
Adam Smith College	847	58%	Perth College	14	1%
Carnegie College	365	25%	Edinburgh's Telford College	13	1%
Elmwood College	135	9%	Forth Valley College of Further & Higher Education	5	0.3%
Dundee College	72	5%	Other Institutions	17	1%

Institutions with less than 5 leavers are included in "Other Institutions" in the table above.

**Table 14: Higher Education Course Information**

Course Area	Total	%	Course Area	Total	%
Arts & Social Sciences	228	18%	Law	46	4%
Science & Mathematics	168	13%	Finance	38	3%
Administration & Management	101	8%	Security & Protective Services	36	3%
Engineering	101	8%	Teaching	36	3%
Health & Medicine	82	6%	Hospitality, Catering & Tourism	33	3%
Art and Design	75	6%	Social, Caring & Advisory Services	29	2%
Sport, Leisure & Sport Science	74	6%	Languages	23	2%
Computing & ICT	67	5%	Communications & Media	22	2%
Performing Arts	67	5%	Animals, Land & Environment	11	1%
Construction	58	4%	Sales & Marketing	7	1%

**Skills Development Scotland**  
**Fife Council School Leaver Destination Report 2009-10**

**Table 15: Further Education Course Information**

Course Area	Total	%	Course Area	Total	%
Construction	183	12%	Health & Medicine	62	4%
Social, Caring & Advisory Services	174	12%	Administration & Management	61	4%
Hospitality, Catering & Tourism	128	9%	Computing & ICT	55	4%
Art and Design	113	8%	Animals, Land & Environment	49	3%
General Education (Highers, etc)	107	7%	Security & Protective Services	45	3%
Hairdressing & Beauty	92	6%	Garage Services	30	2%
Engineering	81	6%	Science & Mathematics	28	2%
Personal Dev. & Prep Courses	77	5%	Communications & Media	26	2%
Performing Arts	69	5%	Arts & Social Sciences	10	1%
Sport, Leisure & Sport Science	64	4%	Other Courses	14	1%

Data & percentages based on less than 5 leavers have been suppressed due to disclosure reasons.

This is the 3<sup>rd</sup> year that SDS has gathered fuller data, across Scotland, about the course areas entered by school leavers. Within higher education the course area with the highest number of leavers is arts & social science whereas last year it was science and mathematics. The number of leavers entering arts and social science based subjects in higher education has risen from **161** to **228**. Another subject area that has witnessed a reasonable rise in the number of leavers is engineering with the number of entrants rising from **87** to **101**. There are three subject area that have witnessed a fall of **13** leavers each namely science and maths, health & medicine and art& design.

This year there has been no change in order of the 3 subject areas that have the highest number of leavers who continue their studies in further education: construction, social/caring and hospitality, catering & tourism. However, the number of leavers who have entered construction related courses has decreased by **12** whereas the number of leavers who have entered social/caring and hospitality related courses has risen by **20** and **18** respectively.

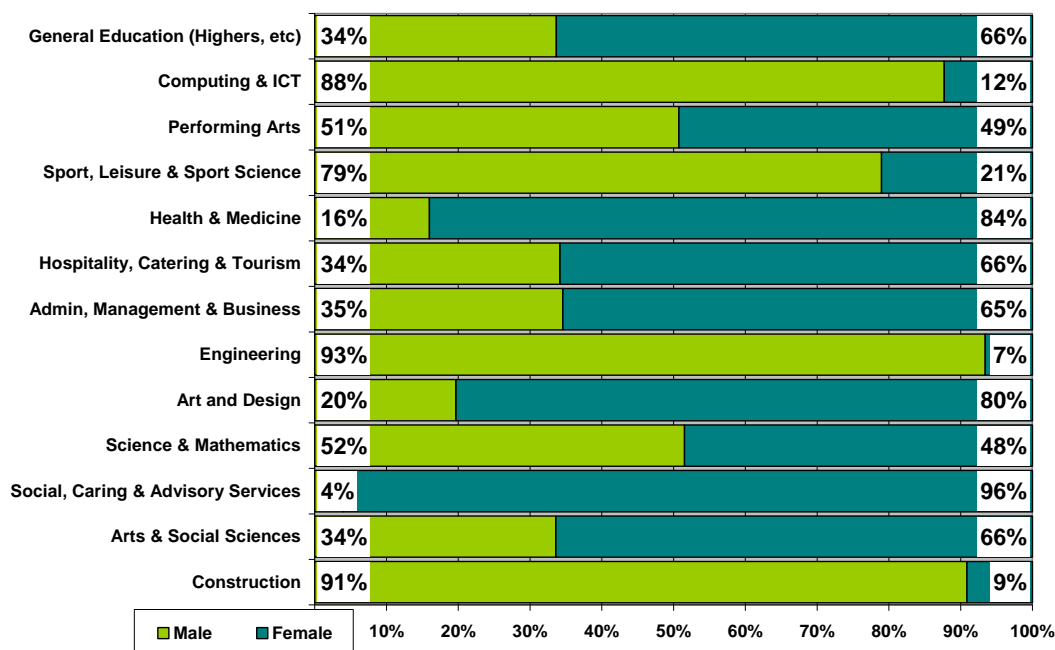
**Table 16: Course Information by Gender**

Course Area	Male		Female	
	Total	%	Total	%
Construction	219	17%	22	2%
Arts & Social Sciences	80	6%	158	11%
Social, Caring & Advisory Services	8	1%	195	13%
Science & Mathematics	101	8%	95	7%
Art and Design	37	3%	151	10%
Engineering	170	13%	12	1%
Administration & Management	56	4%	106	7%
Hospitality, Catering & Tourism	55	4%	106	7%
Health & Medicine	23	2%	121	8%
Sport, Leisure & Sport Science	109	8%	29	2%
Performing Arts	69	5%	67	5%
Computing & ICT	107	8%	15	1%
General Education (Highers, etc)	36	3%	71	5%
Hairdressing & Beauty	*	*	91	6%
Security & Protective Services	63	5%	18	1%
Personal Dev. & Prep Courses	43	3%	34	2%
Animals, Land & Environment	27	2%	33	2%
Communications & Media	24	2%	24	2%
Law	17	1%	30	2%
Finance	20	2%	19	1%
Teaching	*	*	33	2%
Finance	20	2%	19	1%
Teaching	*	*	33	2%
Garage Services	29	2%	*	*

## Skills Development Scotland Fife Council School Leaver Destination Report 2009-10

Data & percentages based on less than 5 leavers have been suppressed due to disclosure and quality reasons.

**Table 17: Gender split within the course areas in both FE/HE**



The top 5 course areas for male leavers, this year are the same as last year albeit there has been a slight change in the order. Construction and engineering remain in 1<sup>st</sup> and 2<sup>nd</sup> place respectively but the number of leavers who entered construction courses has dropped by **14** and the number that entered engineering has risen slightly by **7**. Sport, computing and science and maths related courses are the next most popular subjects with male leavers.

The most popular course area for female leavers is social and caring related courses which is the same as last year. The number of female leavers who began their studies in the area has risen from **157** to **195**, this year. Arts & social science subjects have replaced health & medicine as the 2<sup>nd</sup> most popular subject area with female leavers and the numbers have again risen from **114** to **158**. The number of females entering health & medicine has declined from **136**, last year to **121**, this year. In comparison art & design has witnessed a rise in popularity with **151** female leavers this year compared to **112**, last year.

The most popular area for all leavers is still construction with **9%** of leavers who continue their studies post school entering this area of study. The number of leavers choosing to pursue arts & social science based study has increased from **167** leavers last year to **238**, a rise of around 43%. Likewise the number choosing to study social/caring courses has also risen **167** leavers to **203**. There is still a gender bias as subjects related to construction or engineering remain male dominated and social/caring courses remain female dominated.

### Section 2.2: Employment

**Employment:** This category includes those who are employed and who are in receipt of payment from their employers. It includes young people undertaking training in employment through Skillseekers and Modern Apprenticeships. **479** young people entered Employment and analysis can be provided on **99.2% (475)** of those entering employment for whom we hold information about the occupational area entered.

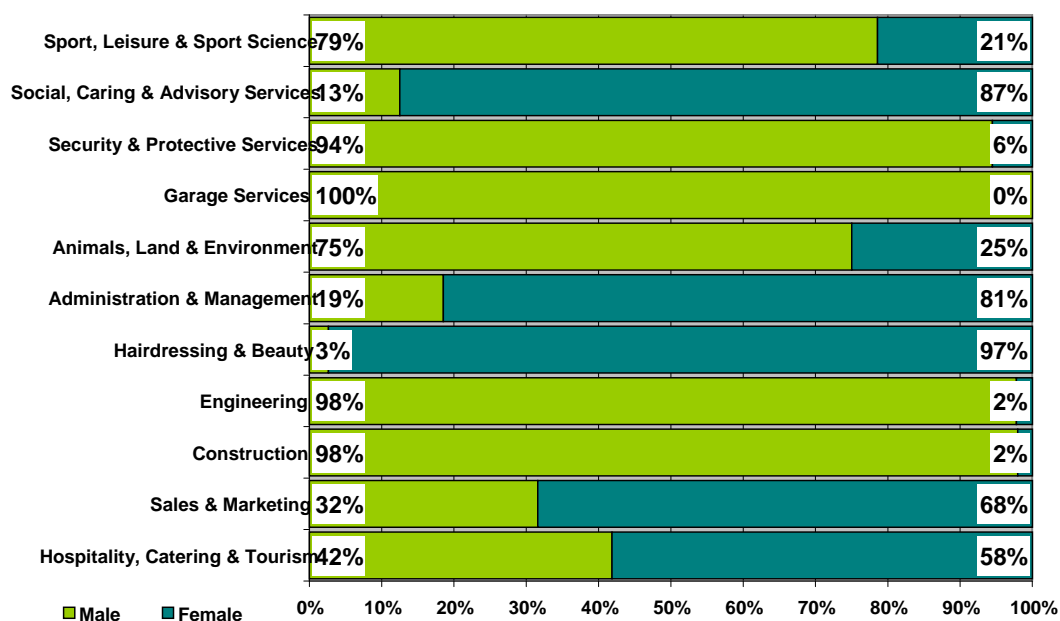
**Skills Development Scotland**  
**Fife Council School Leaver Destination Report 2009-10**

**Table 18: Those entering Employment by Occupational Area**

Occupational Area	Male		Female	
	Total	%	Total	%
Hospitality, Catering & Tourism	41	16%	57	27%
Sales & Marketing	30	12%	65	30%
Construction	48	18%	*	*
Engineering	44	17%	*	*
Hairdressing & Beauty	*	*	37	17%
Administration & Management	5	2%	22	10%
Animals, Land & Environment	18	7%	6	3%
Garage Services	21	8%	*	*
Security & Protective Services	17	7%	*	*
Social, Caring & Advisory Services	*	*	14	7%
Sport, Leisure & Sport Science	11	4%	*	*
Manufacturing	8	3%	*	*
Transport & Distribution	9	3%	*	*

Data & percentages based on less than 5 leavers have been suppressed due to disclosure reasons.

**Table 19: Gender split within the top employment areas**



The most popular area of employment entered by all school leavers continues to be hospitality, catering & tourism with around a fifth of school leavers who enter employment taking up a position in this industry. Likewise sales & marketing, including retail operations and construction remain in 2<sup>nd</sup> and 3<sup>rd</sup> place respectively and in comparison to last year there has been no real change in the proportion of leavers who enter these areas and this is the case across nearly all the sectors.

There is still a gender bias in the occupational areas of construction; engineering and garage services with the majority of entrants being male whereas hairdressing and social caring roles remain mainly female dominated.

## Section 3: Other Destinations

School leavers who do not achieve a positive destination on leaving school are known as the MCMC group and are key customers for Skills Development Scotland and our partner organisations. The SLDR is a snapshot in time and should only be used as an indicator.

**Unemployed and seeking employment or training:** This category includes those who are in contact with SDS and are known by them to be seeking employment or training. This is based on regular contact between SDS and the client. This does not refer to the definition of 'unemployed' used by the Benefits Agency to calculate published unemployment rates. In 2009-10 it also included those individuals undertaking personal skills development<sup>v</sup>. There were **43** leavers who were in this status which equates to **9%** of the unemployed seeking cohort.

**Unemployed and not seeking employment or training:** This category includes all those individuals who are not seeking employment or training for a range of reasons. These individual circumstances may involve sickness, prison, pregnancy, caring for children or other dependents or taking time out.

### Section 3.1 Unemployed Seeking

The table provides a comparison of the percentage of unemployed seeking clients with specific characteristics as opposed to the rate of the full SLDR cohort

**Table 20: Client Characteristics**

Characteristics	% of Full SLDR	% of Unemployed Seeking
<b>Gender</b>		
Male	50%	59%
Female	50%	41%
<b>Stage Left School</b>		
Statutory Summer Leaver	18%	33%
Statutory Winter Leaver	12%	29%
Post Statutory Leaver	70%	38%
<b>Qualifications on Leaving School<sup>vi</sup></b>		
Access 1 / No formal Qualifications	0%	2%
Access 2&3/Foundation Stand. Grade	4%	15%
General Standard Grade/ Intermediate1	21%	36%
Credit Standard Grade/ Intermediate 2	27%	26%
Highers/Advanced Higher	45%	13%
Unknown	3%	8%
<b>Health And Additional Support Needs<sup>vii</sup></b>		
Looked After at Home/ Looked after away from home <sup>viii</sup>	3%	8%
Additional Support Plan Recorded <sup>ix</sup>	9%	17%
Health Factor/Additional Support Need Identified <sup>x</sup>	12%	23%

Data & percentages based on less than 5 leavers have been suppressed due to disclosure reasons.

**Skills Development Scotland**  
**Fife Council School Leaver Destination Report 2009-10**

**Table 20: Client Characteristics (cont)**

Characteristics		% of Full SLDR	% of Unemployed Seeking
<b>SIMD Decile Ranking /Deprivation (SIMD 2009)</b>			
<b>Most deprived</b>	1	7%	13%
	2	13%	22%
	3	12%	15%
	4	11%	12%
	5	11%	11%
	6	10%	9%
	7	8%	6%
	8	9%	6%
	9	13%	5%
<b>Least Deprived</b>	10	6%	3%

Data & percentages based on less than 5 leavers have been suppressed due to disclosure reasons.

- Although male leavers account for only **50%** of the leaving cohort they account for almost **59%** of leavers reported as unemployed seeking
- Statutory summer leavers represent only **18%** of the whole SLDR cohort but are disproportionately represented within the leavers reported as unemployed seeking at **33%**. A similar situation is evident for statutory winter leavers with **12%** and **29%** respectively.
- The largest proportion of unemployed seeking leavers have general level standard grades (**36%**). Those with general level or below represent **25%** of the whole SLDR but are disproportionately represented in the unemployed seeking cohort at **53%**.
- Leavers who had a period of being looked after at home or away from home are also disproportionately represented within the leavers reported as unemployed seeking as they represent **3%** of the total cohort but account **8%** of the unemployed seeking cohort.
- Likewise having an additional support plan or additional support needs is also an indicator that you may be disproportionately represented in the unemployed seeking cohort

**Table 21: Leavers by Intermediate Data zone**

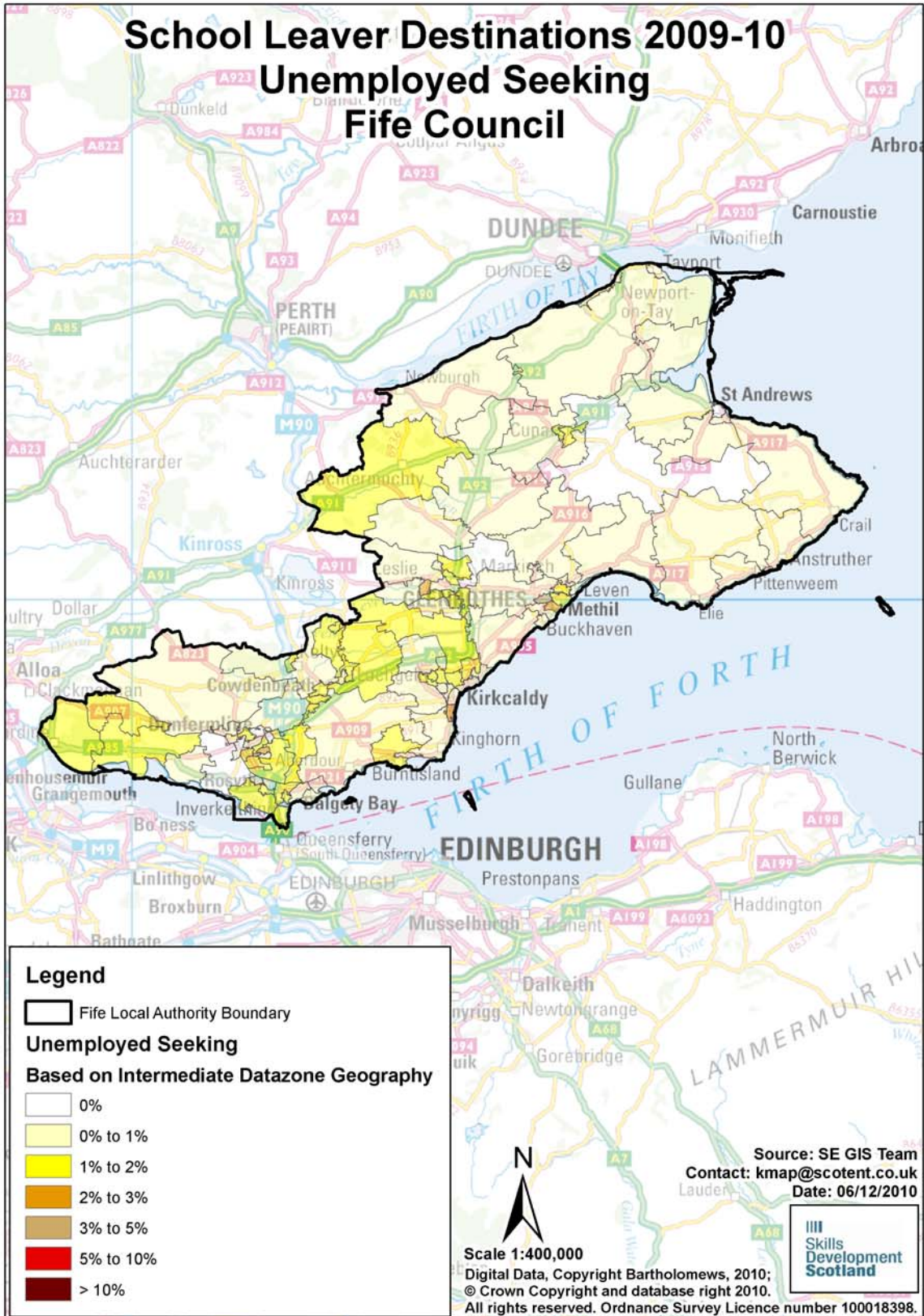
There were **466** leavers from Fife Council secondary schools who were reported as unemployed seeking in the SLDR. By using postcodes, we were able to identify areas within the authority where unemployed school leavers were living. However, at the snapshot, **15** of the leavers were living outside the local authority area but a further **14** unemployed seeking school leavers from other local authority schools were residing within Insert LA boundaries. The analysis below is based on **465** leavers residing in the authority and who SDS held postcode information for. The table below shows the intermediate data zones with the highest percentage of unemployed leavers.

Intermediate Data zone <sup>xi</sup>	Total	%	Intermediate Data zone	Total	%
Methil Methilhill	3%	15	Cardenden	2%	9
Glenrothes Macedonia and Tanshall	2%	11	Cowdenbeath South	2%	9
Dunfermline Abbeyview North	2%	10	Glenrothes Auchmuty	2%	9
Kirkcaldy Linktown and Seafield	2%	10	Glenrothes Pitteuchar	2%	9
Methil West	2%	10	Kirkcaldy Gallatown & Sinclairtown	2%	9
Ballingry	2%	9	Lochgelly East	2%	9

**Skills Development Scotland  
Fife Council School Leaver Destination Report 2009-10**

**Table 22: Destinations of School Leavers: % Unemployed Seeking, 2009/10**

The map shows the intermediate data zones where the **465** leavers who were residing within the local authority boundary reside. Percentages have been calculated as a proportion of the number of leavers reported.

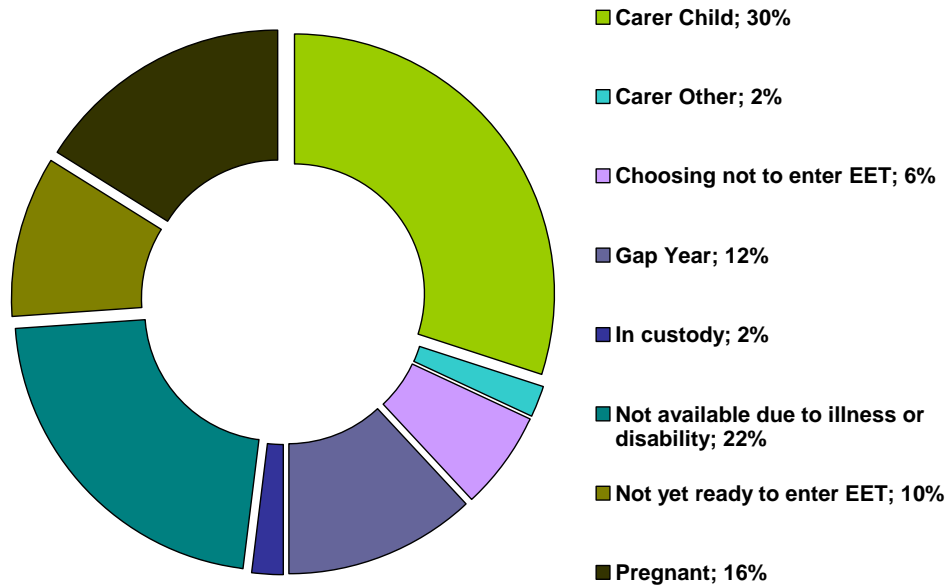


**Skills Development Scotland  
Fife Council School Leaver Destination Report 2009-10**

**Section 3.2 Unemployed NOT Seeking**

There were **50** school leavers within this category. The highest proportion of leavers reported as economically inactive are those who had caring responsibilities for a child.

**Table 23: Individual Circumstances of those Unemployed NOT Seeking**



**Section 3.3 Unknown**

There were **19** school leavers whose destination was unknown at the time of SLDR.

**Skills Development Scotland**  
**Fife Council School Leaver Destination Report 2009-10**

**Table 24: Destinations by School, Percentage**

School	Higher Education	Further Education	Training	Employment	Voluntary Work	Unemployed Seeking	Unemployed Not Seeking	Not Known	Total Leavers	% Pos	% Other
Auchmuty High School	28.9%	43.0%	3.5%	7.0%	0.0%	17.2%	0.0%	0.4%	<b>256</b>	<b>82.4%</b>	17.6%
Balwearie High School	42.9%	34.7%	2.3%	10.4%	0.3%	8.1%	1.0%	0.3%	<b>308</b>	<b>90.6%</b>	9.4%
Beath High School	19.9%	41.2%	7.5%	15.5%	0.0%	15.0%	0.9%	0.0%	<b>226</b>	<b>84.1%</b>	15.9%
Bell Baxter High School	44.3%	30.7%	1.8%	14.3%	0.0%	7.1%	1.8%	0.0%	<b>336</b>	<b>91.1%</b>	8.9%
Buckhaven High School	24.3%	42.9%	3.1%	13.7%	0.0%	12.4%	1.8%	1.8%	<b>226</b>	<b>84.1%</b>	15.9%
Dunfermline High School	39.3%	32.5%	4.3%	9.8%	0.7%	13.1%	0.3%	0.0%	<b>305</b>	<b>86.6%</b>	13.4%
Glenrothes High School	30.2%	40.8%	6.5%	11.2%	0.6%	10.1%	0.6%	0.0%	<b>169</b>	<b>89.3%</b>	10.7%
Glenwood High School	18.4%	53.7%	6.3%	8.4%	0.0%	11.6%	1.1%	0.5%	<b>190</b>	<b>86.8%</b>	13.2%
Inverkeithing High School	40.0%	33.1%	4.2%	10.8%	0.0%	11.2%	0.8%	0.0%	<b>260</b>	<b>88.1%</b>	11.9%
Kirkcaldy High School	25.1%	40.8%	4.9%	12.1%	0.0%	13.9%	1.3%	1.8%	<b>223</b>	<b>83.0%</b>	17.0%
Kirkland High School & Community College	7.8%	40.9%	12.2%	13.9%	0.0%	22.6%	2.6%	0.0%	<b>115</b>	<b>74.8%</b>	25.2%
Lochgelly High School	15.2%	40.8%	12.8%	8.0%	0.0%	21.6%	1.6%	0.0%	<b>125</b>	<b>76.8%</b>	23.2%
Madras College	45.6%	29.3%	1.0%	14.0%	0.0%	6.8%	2.0%	1.3%	<b>307</b>	<b>89.9%</b>	10.1%
Queen Anne High School	38.7%	36.4%	2.7%	13.8%	0.0%	7.4%	1.0%	0.0%	<b>297</b>	<b>91.6%</b>	8.4%
St Andrew's R C High School	27.4%	38.7%	4.8%	11.3%	0.8%	10.5%	4.0%	2.4%	<b>124</b>	<b>83.1%</b>	16.9%
St Columba's R C High School	34.0%	30.8%	6.4%	16.0%	1.3%	11.5%	0.0%	0.0%	<b>156</b>	<b>88.5%</b>	11.5%
Viewforth High School	22.8%	38.6%	7.0%	10.5%	0.0%	17.5%	3.5%	0.0%	<b>57</b>	<b>78.9%</b>	21.1%
Waid Academy	41.5%	30.3%	2.8%	15.5%	0.0%	8.5%	0.7%	0.7%	<b>142</b>	<b>90.1%</b>	9.9%
Woodmill High School	26.1%	39.5%	5.7%	11.5%	0.0%	14.6%	2.5%	0.0%	<b>157</b>	<b>82.8%</b>	17.2%
<b>Fife Council</b>	<b>32.8%</b>	<b>37.1%</b>	<b>4.5%</b>	<b>12.0%</b>	<b>0.2%</b>	<b>11.7%</b>	<b>1.3%</b>	<b>0.5%</b>	<b>3,979</b>	<b>86.6%</b>	13.4%

### **Background Notes:**

---

<sup>i</sup> **Positive Destinations:** includes higher education, further education, training, employment and voluntary work. See text above for explanation of each destination heading.

<sup>ii</sup> **The Scottish Index of Multiple Deprivation (SIMD):** SIMD identifies small area concentrations of multiple deprivation across all of Scotland in a consistent way. SDS uses a file created by Scottish Neighbourhood Statistics to identify SIMD based on an individual leaver's postcode. The leaver's postcode is based on the last known address of the leaver as recorded on our client management system. Where there were gaps in the data held on our CMS, the last known address supplied in the annual import of pupil details has been used. As the last known postcode is used it may be that a leaver from one local authority was living in another local authority at the time of the return. Therefore, the SIMD relates to where a leaver was living and not the concentration of SIMD within a local authority.

<sup>iii</sup> **Stage of Leaving:** A **statutory summer leaver** is a school leaver who chooses to leave school at the earliest opportunity (31<sup>st</sup> May) when they become eligible to leave school i.e. their 16<sup>th</sup> birthday falls on or between 1<sup>st</sup> March and 30<sup>th</sup> September in their year of leaving. A **statutory winter leaver** is a school leaver who chooses to leave school at the earliest opportunity when they become eligible to leave school i.e. their 16<sup>th</sup> birthday falls between 1<sup>st</sup> October and the last day in February. A **post statutory leaver** is a school leaver who chose to remain at school past their statutory leave date e.g. a winter leaver who would have been eligible to leave at the winter leave date but choose to remain at school until the summer leave date. Included in this group are leavers who have past their statutory leave date and have left school at any stage throughout the year.

<sup>iv</sup> **Institutions:** through our follow up of leavers, we confirm Further and Higher Education destinations and as part of the process we request further information about the institution a leaver is attending. This is not a requirement of the Scottish Government and the information displayed is based on the recorded detail on Insight.

<sup>v</sup> **Personal Skills Development:** - Some leavers are not yet ready, or in a position to make an immediate transition to a formal positive destination. In such cases leavers may participate in learning opportunities / personal and social development activities with the aim of improving their confidence and employability. These programmes can be viewed as a stepping stone towards a more formal positive destination. They are often delivered by a community learning and development or third sector organisation and can include the activity agreement pilots. It was agreed, with the Scottish Government, that individuals undertaking these activities would be reported within the unemployed seeking SLDR category.

<sup>vi</sup> **Qualifications on leaving school:** This information is based on pre-appeal information from the Scottish Qualifications Agency where SDS received information about a leaver's qualifications and a robust match of records was made. Where no match was made the qualification level has been gathered through our interaction with individuals.

<sup>vii</sup> **Qualifications on leaving school:** This information is based on pre-appeal information from the Scottish Qualifications Agency where SDS received information about a leaver's qualifications and a robust match of records was made. Where no match was made the qualification level has been gathered through our interaction with individuals.

<sup>viii</sup> **Looked After at Home/ Looked after away from home:** This refers to recent school leavers that SDS has recorded information that they had an episode of being looked after at home or looked after away from home. This information is gathered in a variety of ways including local SDS contact with Social Work departments, data received through the school import process or via direct contact with individuals. It is recognised that this information may not be complete when compared with similar data from social work services departments. However SDS is working with the Scottish Government and local authorities to look at improving the sharing of information in respect of these young people therefore the figures used are indicative.

<sup>ix</sup> **Additional Support Plan Recorded:** SDS receives data from all local authority schools and school centres with pupils in stages S1-S6 or special schools to import into our client management system. We receive information about those who have co-ordinated support plans (CSP) and individualised educational programmes. We also gather information directly from individuals and via our ongoing work with schools. We acknowledge that the data may vary from that held by local authorities therefore the figures used are indicative.

<sup>x</sup> **Health Factor/Additional Support Need Identified:** SDS receives data from all local authority schools and school centres with pupils in stages S1-S6 or special schools to import into our client management system. We receive information about those who have identified additional support needs. We also gather information directly from individuals and via our ongoing work with schools. We acknowledge that the data may vary from that held by local authorities therefore the figures used are indicative.

**Skills Development Scotland**  
**Fife Council School Leaver Destination Report 2009-10**

---

<sup>xi</sup>**Intermediate Data zone Geography:** The data zone is the key small area statistical geography in Scotland. The intermediate geography is built up from data zones and can be used to disseminate statistics that are not suitable for release at the data zone level. Due to the small number of individuals it has been decided to use the intermediate level geography. There are 1235 intermediate zones in Scotland, containing on average 4000 household residents and these have been designed to respect local authority boundaries as at 2001 Census.