

School Leaver Destination Report

2009 – 2010

Falkirk Council

Contents

Section 1: Overview – Main Findings	3
Table 1: Destination Totals	4
Table 2: Local Authority Comparison to Scotland	4
Section 1.1 - Annual Trends	5
Table 3: Trends 2000 – 2010 of Positive Destinations.....	5
Table 4: Trends 2000 – 2010 of Other Destinations	5
Table 5: Destinations from 2000 to 2010	6
Section 1.2: Client Characteristics	6
Table 6: Destination split by Gender	6
Table 7: Gender split within each destination	7
Table 8: Destination by SIMD	7
Table 9: Destination by Stage Left School.	8
Section 2: Positive Destinations	8
Section 2.1 Higher and Further Education	8
Table 10: HE Entrants by Institution Type	8
Table 11: HE Students by Institution	9
Table 12: HE Students by FE Colleges	9
Table 13: FE Students by FE Colleges	9
Table 14: Higher Education Course Information.....	9
Table 15: Further Education Course Information	10
Table 16: Course Information by Gender	10
Table 17: Gender split within the course areas in both FE/HE	11
Section 2.2: Employment	12
Table 18: Those entering Employment by Occupational Area	12
Table 19: Gender split within the top employment areas	12
Section 3: Other Destinations	13
Section 3.1 Unemployed Seeking	13
Table 20: Client Characteristics.....	13
Table 21: Leavers by Intermediate Data zone	14
Table 22: Destinations of School Leavers: % Unemployed Seeking, 2009/10	15
Section 3.2 Unemployed NOT Seeking	15
Section 3.2 Unemployed NOT Seeking	16
Table 23: Individual Circumstances of those Unemployed NOT Seeking	16
Section 3.3 Unknown	16
Table 24: Destinations by School, Percentage	17
Background Notes:	18

Background

The School Leaver Destination Return (SLDR) is a statistical return undertaken by Skills Development Scotland (SDS) on behalf of the Scottish Government. The Return is based on a follow up of young people who left school between the 1st of August 2009 and the 31st of July 2010. This exercise was carried out during the month of September 2010.

The Scottish Government use the data produced from the Return to report against the National Indicator and target, "increase the proportion of school leavers (from Scottish publicly funded schools) in positive and sustained destinations (FE, HE, employment or training)". Partners, particularly Local Authorities, use the data to inform initiatives developed as part of the More Choices More Chances Strategy, to evidence the success of initiatives, measure progress against targets, and to identify areas to target resources to improve the post school outcomes for young people.

Methodology

The return is carried out during the month of September with staff across Skills Development Scotland following up over 55,000 school leavers. Destinations are confirmed throughout the follow up period and the destination that is reported is the destination that is known at the snapshot date. This year, we reported the information as known to us on 2nd October 2010. Destinations of young people are fluid in nature, therefore, it is possible that a leaver entered employment or training on leaving school but by the time the snapshot was taken this destination may have changed to another destination.

The information that is gathered is recorded within the SDS CMS system (Insight) which enables us to produce MIS reports and populate the data fields to be sent to the Government. This data is transferred at an individual level and undergoes a matching & validation process until a cohort is agreed. This allows the government's analytical services unit to match the client's individual outcome with other indicators such as social economic background, additional support needs and stage of leaving, etc. All information in this report, however, is based upon data held within the SDS Insight database which has been analysed to produce the graphs and tables contained within this report.

Analysis

Only leavers from publicly funded secondary schools are within the scope of the SLDR. This report relates to **1,547** leavers from publicly funded secondary schools. This relates to approximately a **2%** reduction in the number of leavers reported in the SLDR in 2008-09.

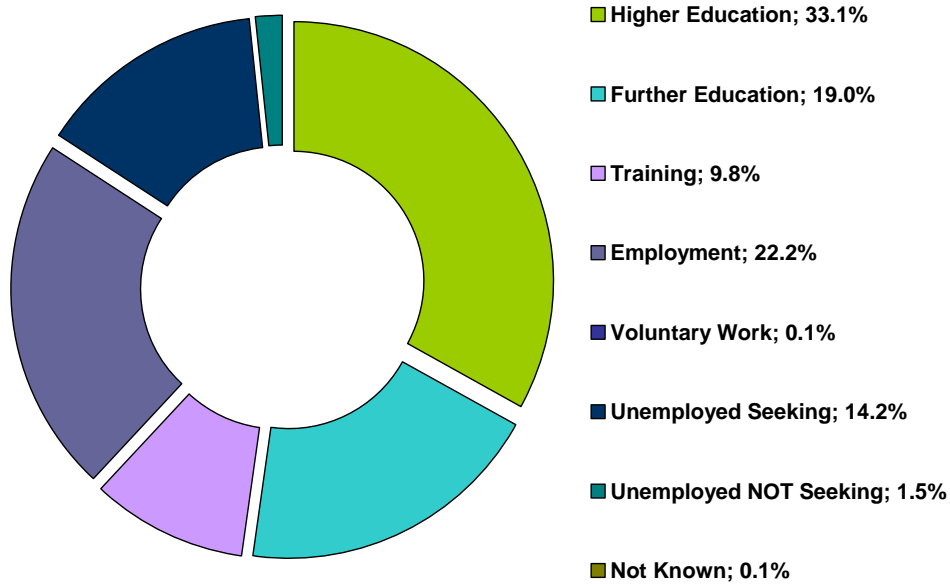
Section 1: Overview – Main Findings

- Overall the percentage of leavers entering a positive destinationⁱ is **84.2%**, a rise of **2.2%** on last year and means the authority has the 5th lowest level of positive destinations in Scotland.
- In comparison to 2008-09, the percentage of leavers entering higher education has increased to **33.1%**, a rise of **2%**. Despite this rise, the percentage of leavers entering higher education is still below the national average of **35.7%**.
- The percentage of leavers entering further education has decreased to **19%**, a reduction of **2.7%** from 2008-09. This decrease means that the authority has the fourth lowest level of entrants to further education in Scotland.
- The percentage of leavers entering training increased slightly in 2009-10 to **9.8%**, which is the 4th highest level in Scotland.
- The percentage of leavers entering employment has increased slightly from **21.1%** in 2008-09, the lowest percentage in a decade, to **22.2%**.
- The percentage of leavers who are unemployed seeking has fallen by **1.8%** to **14.2%**, the 5th highest level in Scotland and around **2.8%** higher than the national average.

Skills Development Scotland National School Leaver Destination Report 2009-10

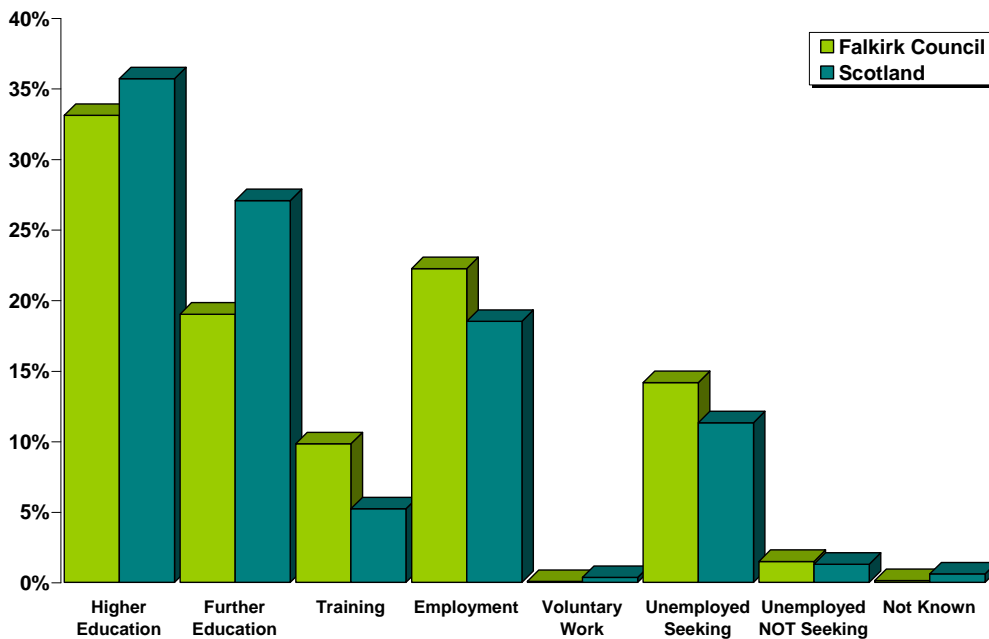
- School leavers whose destination is unknown to SDS has fallen to its lowest recorded level at **0.1%**.

Table 1: Destination Totals



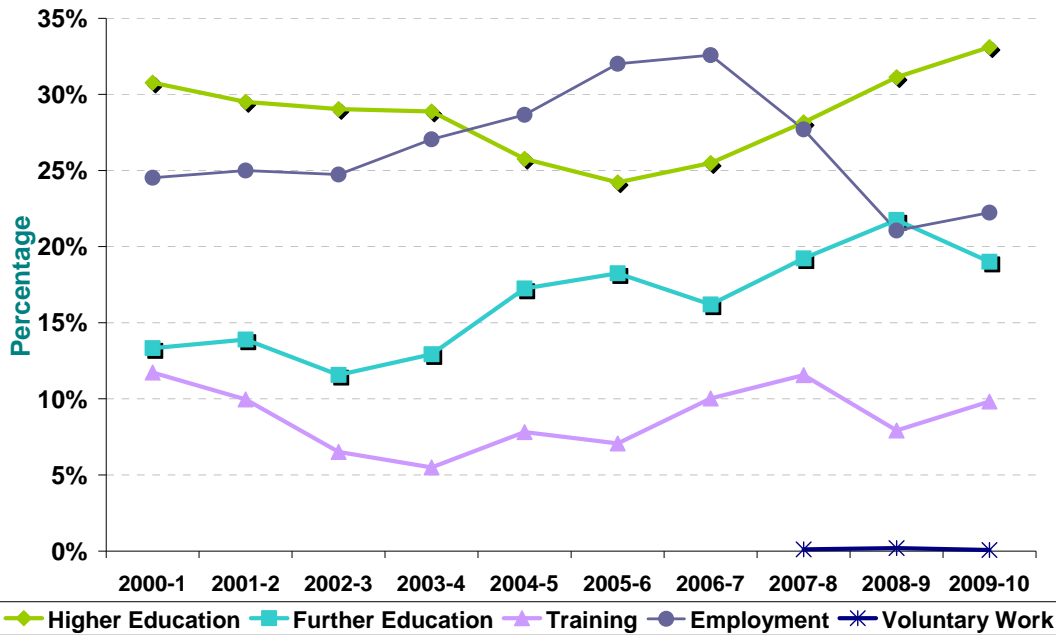
Area	Total Leavers	Higher Education	Further Education	Training	Employment	Voluntary Work	Unemployed Seeking	Unemployed NOT Seeking	Not Known
Falkirk Council	1,547	33.1% 512	19.0% 294	9.8% 152	22.2% 344	0.1% 1	14.2% 219	1.5% 23	0.1% 2
Scotland	54,097	35.7% 19,309	27.1% 14,637	5.2% 2,822	18.5% 10,005	0.3% 187	11.3% 6,117	1.3% 696	0.6% 324

Table 2: Local Authority Comparison to Scotland



Section 1.1 - Annual Trends

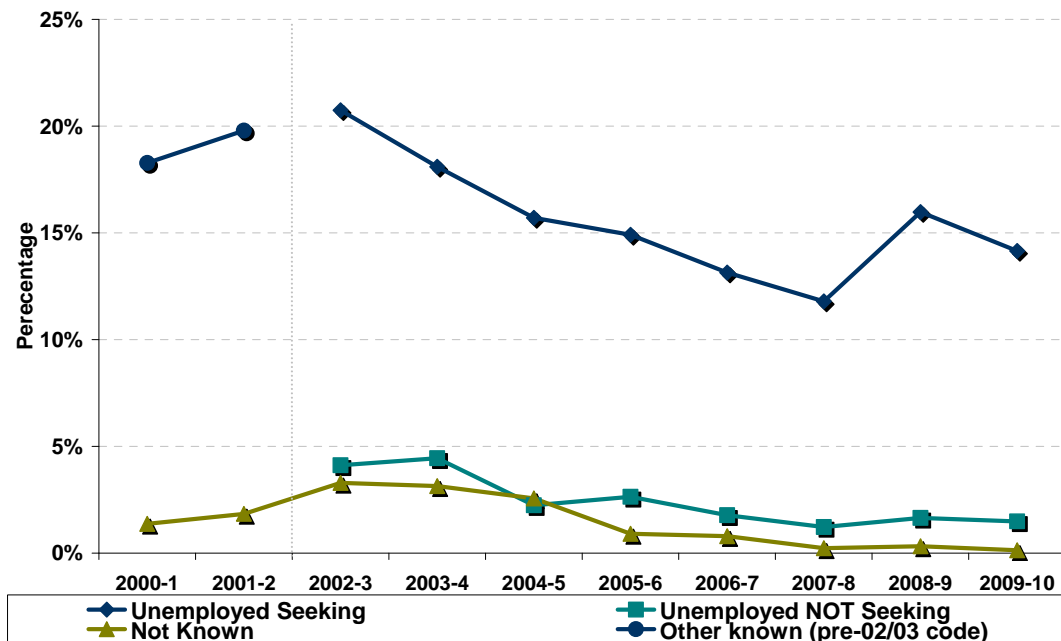
Table 3: Trends 2000 – 2010 of Positive Destinations



Note: Voluntary Work has been included as a separate destination category since the 2007-08 SLDR return but was reported within the unemployed not seeking category previously.

Ten years ago in 2000-01, the percentage of leavers entering higher education was **30.8%** but thereafter the percentage of leavers entering HE fell year on year until it reached its lowest point in a decade in 2005-06 at **24.2%**. From this point in time the decline was reversed and the percentage increased year on year and now sits at **33.1%**, the highest level in a decade but still below the national average. Since 2006-07 the percentage of leavers entering further education had been rising but this year there was a slight drop but this is still **5.7%** higher than ten years ago. Since reaching a ten year high of **32.6%** in 2006-07, the percentage of leavers entering employment has declined sharply and although there was a slight rise this year, the level is still over **10%** lower than in 2006-07.

Table 4: Trends 2000 – 2010 of Other Destinations



Skills Development Scotland National School Leaver Destination Report 2009-10

Since 2002-03, the percentage of leavers reported as unemployed seeking had been falling year on year until 2008-09 when there was a sharp rise to its highest level in four years, however, this year there was a fall to below 2005-06 levels at **14.2%**. Since 2004-05, the percentage of unknown leavers has been falling steadily and this trend continued this year with the percentage falling to the lowest level ever at **0.1%**.

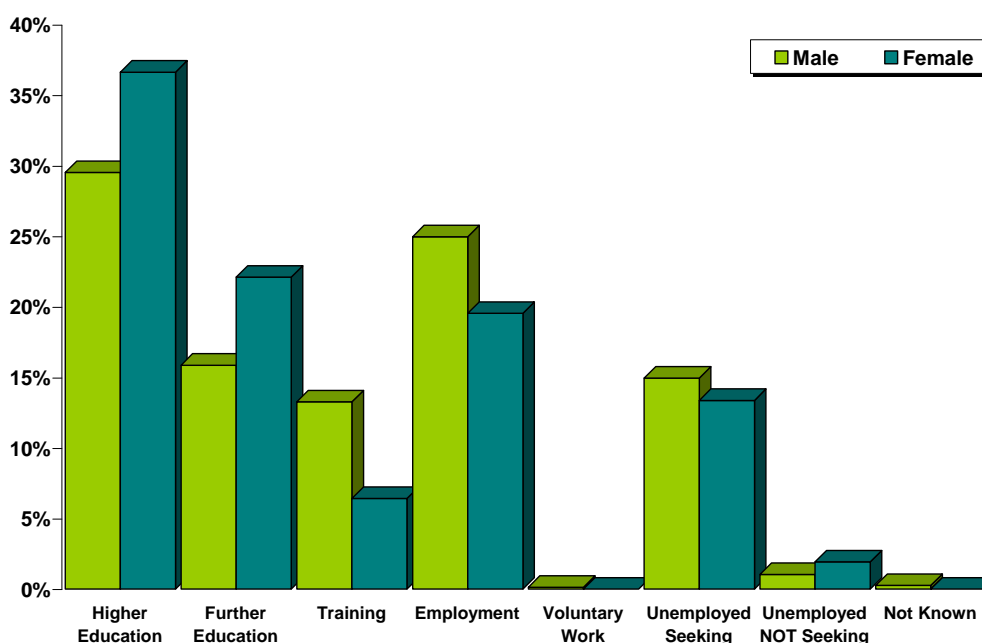
Table 5: Destinations from 2000 to 2010

Year	Total Leavers	Higher Education	Further Education	Training	Employment	Voluntary Work	Unemployed Seeking	Unemployed NOT Seeking	Not Known	Other Known
2000-1	1,680	30.8%	13.3%	11.7%	24.5%				1.4%	18.3%
2001-2	1,576	29.5%	13.9%	10.0%	25.0%				1.8%	19.8%
2002-3	1,581	29.0%	11.6%	6.5%	24.7%		20.7%	4.1%	3.3%	
2003-4	1,531	28.9%	12.9%	5.5%	27.0%		18.1%	4.4%	3.1%	
2004-5	1,560	25.8%	17.2%	7.8%	28.7%		15.7%	2.2%	2.6%	
2005-6	1,556	24.2%	18.3%	7.1%	32.0%		14.9%	2.6%	0.9%	
2006-7	1,636	25.5%	16.2%	10.0%	32.6%		13.1%	1.8%	0.8%	
2007-8	1,722	28.2%	19.2%	11.6%	27.7%	0.1%	11.8%	1.2%	0.2%	
2008-9	1,577	31.1%	21.8%	7.9%	21.1%	0.2%	16.0%	1.6%	0.3%	
2009-10	1,547	33.1%	19.0%	9.8%	22.2%	0.1%	14.2%	1.5%	0.1%	

Note: Prior to 2002-03 both the unemployed seeking and unemployed not seeking categories were reported in a separate category called Other Known. This is reflected in the table and graph above.

Section 1.2: Client Characteristics

Table 6: Destination split by Gender



Year	Total Leavers	Higher Education	Further Education	Training	Employment	Voluntary Work	Unemployed Seeking	Unemployed NOT Seeking	Not Known
Male	769	29.5%	15.9%	13.3%	25.0%	0.1%	15.0%	1.0%	0.3%
Female	778	36.6%	22.1%	6.4%	19.5%	0.0%	13.4%	1.9%	0.0%

Female leavers (**84.7%**) are slightly more likely than male leavers (**83.7%**) to enter positive destinations on leaving school. Although the difference in the percentage of leavers entering positive destinations is not marked between the genders, the actual destinations are. The proportion of female leavers who continue their education in either higher or further education is **58.7%** compared to **45.4%** of males, over a **13%** difference. The percentage of males entering

employment and training (**38.2%**) is over **12%** higher than that for females (**26%**). Males are slightly more likely to become unemployed and seeking than females with around **53%** of leavers reported as unemployed seeking being male.

Table 7: Gender split within each destination

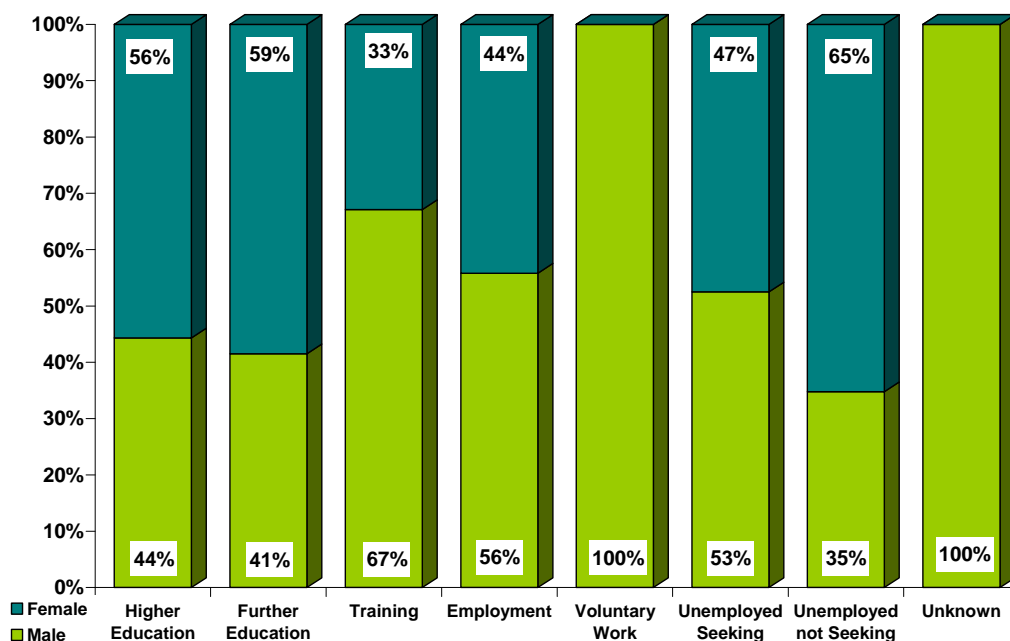


Table 8: Destination by SIMD

SIMD Decile ⁱⁱ	Most Deprived → Least Deprived										Unknown
	1	2	3	4	5	6	7	8	9	10	
Higher Education	15%	16%	19%	22%	23%	39%	42%	47%	56%	51%	*
Further Education	19%	22%	23%	23%	22%	16%	15%	20%	15%	11%	*
Training	15%	14%	16%	14%	10%	9%	10%	3%	3%	*	*
Employment	19%	23%	19%	23%	26%	27%	18%	23%	21%	24%	*
Voluntary Work	*	*	*	*	*	*	*	*	*	*	*
Unemployed Seeking	30%	21%	21%	15%	19%	9%	14%	5%	4%	10%	*
U/E Not Seeking	*	5%	2%	2%	*	*	*	*	*	*	*
Unknown	*	*	*	*	*	*	*	*	*	*	*
Positive Destinations	68%	75%	77%	82%	81%	91%	85%	93%	95%	89%	100%
Total	73	106	253	217	167	140	123	150	188	129	1
% of Total Leavers	5%	7%	16%	14%	11%	9%	8%	10%	12%	8%	*

Data & percentages based on less than 5 leavers have been suppressed due to disclosure and quality reasons.

- In general, leavers who live in the least deprived areas are more likely to enter positive destinations on leaving school than those from the most deprived area. For example **89%** of those who live in SIMD 10 enter positive destinations whereas **68%** of those in SIMD 1 enter positive destinations.
- Leavers who live in the least deprived areas are more likely to enter Higher Education in comparison to leavers who live in the most deprived areas. The proportion leavers entering higher education from the least deprived area (**51%**) is over three times the proportion for leavers from the most deprived areas (**15%**). It is noticeable that the percentage of leavers entering higher education gradually rises with each SIMD decile until you reach SIMD 9.
- The highest percentage of leavers from the most deprived area (SIMD 1) are unemployed seeking (**30%**).

Table 9: Destination by Stage Left School.

Stage of Leaving ⁱⁱⁱ Destination	Statutory Summer Leaver	Statutory Winter Leaver	Post Statutory Leaver
Higher Education	*	*	43%
Further Education	18%	14%	20%
Training	32%	20%	5%
Employment	19%	22%	23%
Voluntary Work	*	*	*
Unemployed Seeking	27%	39%	9%
Unemployed Not Seeking	3%	*	1%
Unknown	*	*	*
Positive Destinations	69%	58%	90%
Total Leavers	205	153	1,189
% of Total Leavers	13%	10%	77%

Data & percentages based on less than 5 leavers have been suppressed due to disclosure and quality reasons.

- It can be noted that the majority of school pupils (**77%**) choose to remain at school past their statutory leave date and this has a positive impact on their positive progression from school. Leavers who stay on past their statutory leave date are more likely to progress to positive outcomes on leaving school with the highest proportion entering higher education. Overall **90%** of those who stay on at school past their statutory leave date enter a positive destination.
- Statutory winter leavers are less likely to enter positive destinations (**58%**) and the highest percentage are reported as unemployed seeking and are over four times more likely to be reported as unemployed seeking than a post statutory leaver.
- The highest proportion of statutory summer leavers enter training but they are also 3 times more likely than post statutory leaver to be reported as unemployed seeking.

Section 2: Positive Destinations

Section 2.1 Higher and Further Education

Higher Education (HE): This category includes leavers following HND (Higher National Diploma) or HNC (Higher National Certificate) courses, degree courses, courses for the education and training of teachers and higher level courses for professional qualifications. **6** young people with a deferred, unconditional place in higher education for next year have also been included in this year's figures.

Further Education (FE): This category includes leavers undertaking non advanced further education which is not higher education.

From those reported in the SLDR, **512** leavers entered Higher Education and **294** entered Further Education. Detailed analysis can be provided on **100%** of this cohort for whom we hold information on institution and course chosen

Table 10: HE Entrants by Institution Type

Institution Type	Total	%
University / HE College	360	70%
FE College	142	28%
Other ¹	10	2%

¹ Other Category includes institutions out with Scotland and other private institutions

Table 11: HE Students by Institution

Institution ^{iv}	Total	%	Institution	Total	%
Stirling University	75	15%	West of Scotland University	12	2%
Glasgow University	47	9%	Queen Margaret University	8	2%
Edinburgh University	37	7%	St Andrews University	8	2%
Strathclyde University	36	7%	Aberdeen University	7	1%
Glasgow Caledonian University	32	6%	The Robert Gordon University	7	1%
Heriot Watt University	26	5%	Outwith Scotland	7	1%
Napier University	23	4%	FE Colleges	142	28%
Abertay University Dundee	21	4%	Other Institutions	9	2%
Dundee University	15	3%			

Institutions with less than 5 leavers are included in "Other Institutions" in the table above.

Table 12: HE Students by FE Colleges

Institution	Total	%	Institution	Total	%
Forth Valley College	97	19%	Cumbernauld College	5	1%
Glasgow Metropolitan College	11	2%	Stevenson College	5	1%
Central College of Commerce	6	1%	Other Institutions	14	3%

Institutions with less than 5 leavers are included in "Other Institutions" in the table above.

Table 13: FE Students by FE Colleges

Institution	Total	%	Institution	Total	%
Forth Valley College	256	87%	Edinburgh's Telford College	7	2%
Oatridge College	8	3%	Other Institutions	23	8%

Institutions with less than 5 leavers are included in "Other Institutions" in the table above.

Table 14: Higher Education Course Information

Course Area	Total	%	Course Area	Total	%
Science & Mathematics	85	17%	Finance	20	4%
Arts & Social Sciences	75	15%	Teaching	19	4%
Health & Medicine	43	8%	Languages	14	3%
Administration & Management	40	8%	Law	14	3%
Sport, Leisure & Sport Science	36	7%	Hospitality, Catering & Tourism	12	2%
Computing & ICT	31	6%	Sales & Marketing	8	2%
Engineering	31	6%	Communications & Media	7	1%
Construction	24	5%	Social, Caring & Advisory Services	7	1%
Performing Arts	21	4%	Other Course areas	5	1%
Art and Design	20	4%			

Data & percentages based on less than 5 leavers have been suppressed due to disclosure and quality reasons.

Table 15: Further Education Course Information

Course Area	Total	%	Course Area	Total	%
Social, Caring & Advisory Services	46	16%	Sport, Leisure & Sport Science	12	4%
Art and Design	32	11%	Personal Dev & Prep Courses	9	3%
Hospitality, Catering & Tourism	27	9%	Animals, Land & Environment	8	3%
Construction	24	8%	Communications & Media	7	2%
Engineering	22	7%	Health & Medicine	6	2%
Administration & Management	19	6%	Performing Arts	6	2%
Computing & ICT	19	6%	Science & Mathematics	6	2%
General Education (Highers, etc)	19	6%	Garage Services	5	2%
Hairdressing & Beauty	19	6%	Other Course areas	8	3%

Data & percentages based on less than 5 leavers have been suppressed due to disclosure and quality reasons.

This is the 3rd year that SDS has gathered fuller data, across Scotland, about the course areas entered by school leavers. There has been no change, since last year, to the top three higher education course areas entered by leavers – science & maths, arts & social sciences and health & medicine. However, the percentage of leavers entering both science & maths and arts & social science based subjects has increased by **2%** and **4%** respectively.

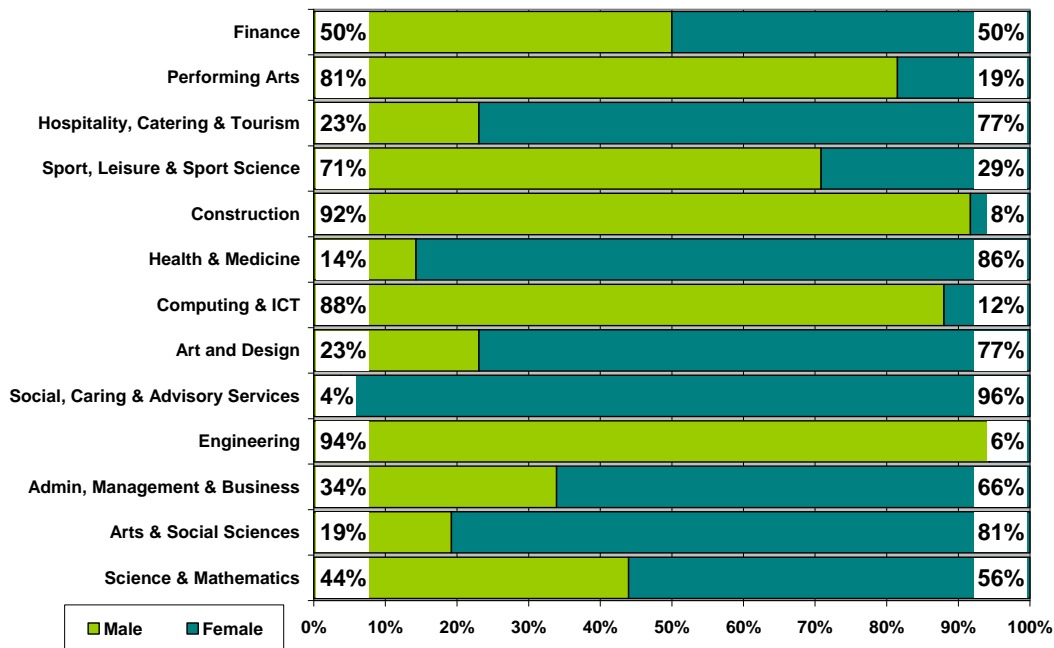
Within further education, social/caring related subjects including childcare is still the course area with the highest percentage of leavers. The percentage of leavers entering art & design related has increased by **5%** and has now replaced general education as the subject area with the second highest proportion of leavers.

Table 16: Course Information by Gender

Course Area	Male		Female	
	Total	%	Total	%
Science & Mathematics	40	11%	51	11%
Arts & Social Sciences	15	4%	63	14%
Administration & Management	20	6%	39	9%
Engineering	50	14%	*	*
Social, Caring & Advisory Services	*	*	51	11%
Art and Design	12	3%	40	9%
Computing & ICT	44	13%	6	1%
Health & Medicine	7	2%	42	9%
Construction	44	13%	*	*
Sport, Leisure & Sport Science	34	10%	14	3%
Hospitality, Catering & Tourism	9	3%	30	7%
Performing Arts	22	6%	5	1%
Finance	11	3%	11	2%
Hairdressing & Beauty	*	*	20	4%
General Education (Highers, etc)	6	2%	13	3%
Teaching	*	*	16	4%
Communications & Media	7	2%	7	2%
Languages	7	2%	7	2%
Law	5	1%	9	2%
Animals, Land & Environment	*	*	11	2%
Personal Dev & Prep Courses	*	*	5	1%
Sales & Marketing	*	*	8	2%
Garage Services	5	1%	*	*

Data & percentages based on less than 5 leavers have been suppressed due to disclosure and quality reasons.

Table 17: Gender split within the course areas in both FE/HE



This year engineering related courses have replaced science & maths related courses as the area of study with the highest percentage of male leavers. Construction and computing related courses have the joint 2nd highest percentage of male leavers and science & maths has dropped to fourth. These four course areas account for just over half the male leavers who continue their post school studies in further or higher education.

This year the two course areas with the highest proportion of female leavers are arts & social sciences and science & maths based subjects. These replaced courses within social/caring areas and health & medicine which were the top two course area in 2008-09. The percentage of leavers entering this year's top two course areas has increased from 9% to 14% and 8% to 11% respectively.

The most popular area for all leavers is science and maths and the gender split is relatively even although female leavers are in the majority. However, subjects in engineering, construction and computing remain male dominated and social/caring related courses remain female dominated.

Section 2.2: Employment

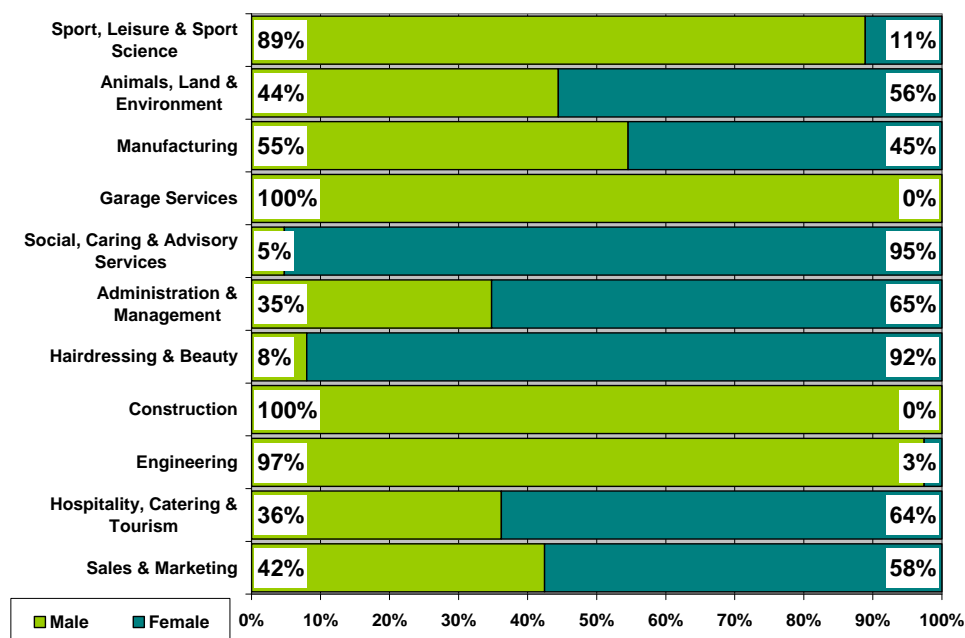
Employment: This category includes those who are employed and who are in receipt of payment from their employers. It includes young people undertaking training in employment through Skillseekers and Modern Apprenticeships. **344** young people entered Employment and analysis can be provided on **98.3% (338)** of those entering employment for whom we hold information about the occupational area entered.

Table 18: Those entering Employment by Occupational Area

Occupational Area	Male		Female	
	Total	%	Total	%
Sales & Marketing	31	17%	42	28%
Hospitality, Catering & Tourism	21	11%	37	24%
Engineering	38	20%	*	*
Construction	36	19%	*	*
Hairdressing & Beauty	*	*	23	15%
Administration & Management	8	4%	15	10%
Social, Caring & Advisory Services	*	*	20	13%
Garage Services	16	9%	*	*
Manufacturing	6	3%	5	3%
Animals, Land & Environment	*	*	5	3%
Sport, Leisure & Sport Science	8	4%	*	*
Security & Protective Services	8	4%	*	*
Transport & Distribution	6	3%	*	*

Data & percentages based on less than 5 leavers have been suppressed due to disclosure and quality reasons.

Table 19: Gender split within the top employment areas



The most popular area of employment entered by school leavers continues to be sales, which includes retail operations, with just over one in five leavers who leave school to take up in employment finding jobs in this sector. In 2008-09, the occupational area with the 2nd highest proportion of leavers was construction with **55 (17%)** leavers entering this industry. However, in 2009-10, this has declined to **36 (11%)** leavers finding construction related positions. In contrast, the percentage of leavers taking up positions in engineering has increased from **8%** to **12%** or in numerical terms, from **27** leavers to **39** leavers which means this is the occupational area with the

highest proportion of male leavers. It remains a male dominated occupational area with **97%** of entrants being male. The four occupational areas favoured by female leavers remain the same as last year, sales including retail operations, hospitality & tourism, hairdressing & beauty and social/caring occupations. There has been little change from 2008-09 in the number of female leavers entering each of these areas. A gender bias can still be witnessed along traditional lines with male leavers dominating engineering, construction and garage work whereas females dominate hairdressing/beauty and social/caring roles.

Section 3: Other Destinations

School leavers who do not achieve a positive destination on leaving school are known as the MCMC group and are key customers for Skills Development Scotland and our partner organisations. The SLDR is a snapshot in time and should only be used as an indicator.

Unemployed and seeking employment or training: This category includes those who are in contact with SDS and are known by them to be seeking employment or training. This is based on regular contact between SDS and the client. This does not refer to the definition of 'unemployed' used by the Benefits Agency to calculate published unemployment rates. In 2009-10 it also included those individuals undertaking personal skills development^v. There was **1** leaver who was reported in this status.

Unemployed and not seeking employment or training: This category includes all those individuals who are not seeking employment or training for a range of reasons. These individual circumstances may involve sickness, prison, pregnancy, caring for children or other dependents or taking time out.

Section 3.1 Unemployed Seeking

The table provides a comparison of the percentage of unemployed seeking clients with specific characteristics as opposed to the rate of the full SLDR cohort

Table 20: Client Characteristics

Characteristics	% of Full SLDR	% of Unemployed Seeking
Gender		
Male	50%	53%
Female	50%	47%
Stage Left School		
Statutory Summer Leaver	13%	26%
Statutory Winter Leaver	10%	27%
Post Statutory Leaver	77%	47%
Qualifications on Leaving School^{vi}		
Access 1 / No formal Qualifications	0%	1%
Access 2&3/Foundation Stand. Grade	3%	7%
General Standard Grade/ Intermediate1	17%	39%
Credit Standard Grade/ Intermediate 2	29%	30%
Highers/Advanced Higher	50%	20%
Unknown	1%	3%
Health And Additional Support Needs^{vii}		
Looked After at Home/ Looked after away from home ^{viii}	3%	9%
Additional Support Plan Recorded ^{ix}	9%	14%
Health Factor/Additional Support Need Identified ^x	12%	20%

Data & percentages based on less than 5 leavers have been suppressed due to disclosure and quality reasons.

Table 20: Client Characteristics (cont)

Characteristics		% of Full SLDR	% of Unemployed Seeking
SIMD Decile Ranking /Deprivation (SIMD 2009)			
Most deprived	1	5%	10%
	2	7%	10%
	3	16%	25%
	4	14%	15%
	5	11%	14%
	6	9%	5%
	7	8%	8%
	8	10%	4%
	9	12%	3%
Least Deprived	10	8%	6%
	Unknown	0%	0%

Data & percentages based on less than 5 leavers have been suppressed due to disclosure and quality reasons.

- Statutory winter leavers represent only **10%** of the whole SLDR cohort but are disproportionately represented within the leavers reported as unemployed seeking at **27%**. A similar situation is evident for statutory summer leavers with **13%** and **26%** respectively.
- The largest percentage of unemployed seeking leavers have general level standard grades and those with this level or below are disproportionately represented in the unemployed seeking cohort. Only **20%** of leavers reported in the SLDR have general standard grades or below yet **47%** of the unemployed seeking leavers have this level of qualifications.
- Leavers who had a period of being looked after at home or away from home are also disproportionately represented within the leavers reported as unemployed seeking as they represent **3%** of the total cohort but account **9%** of the unemployed seeking cohort.
- Likewise having an additional support plan or additional support needs is also an indicator that you may be disproportionately represented in the unemployed seeking cohort

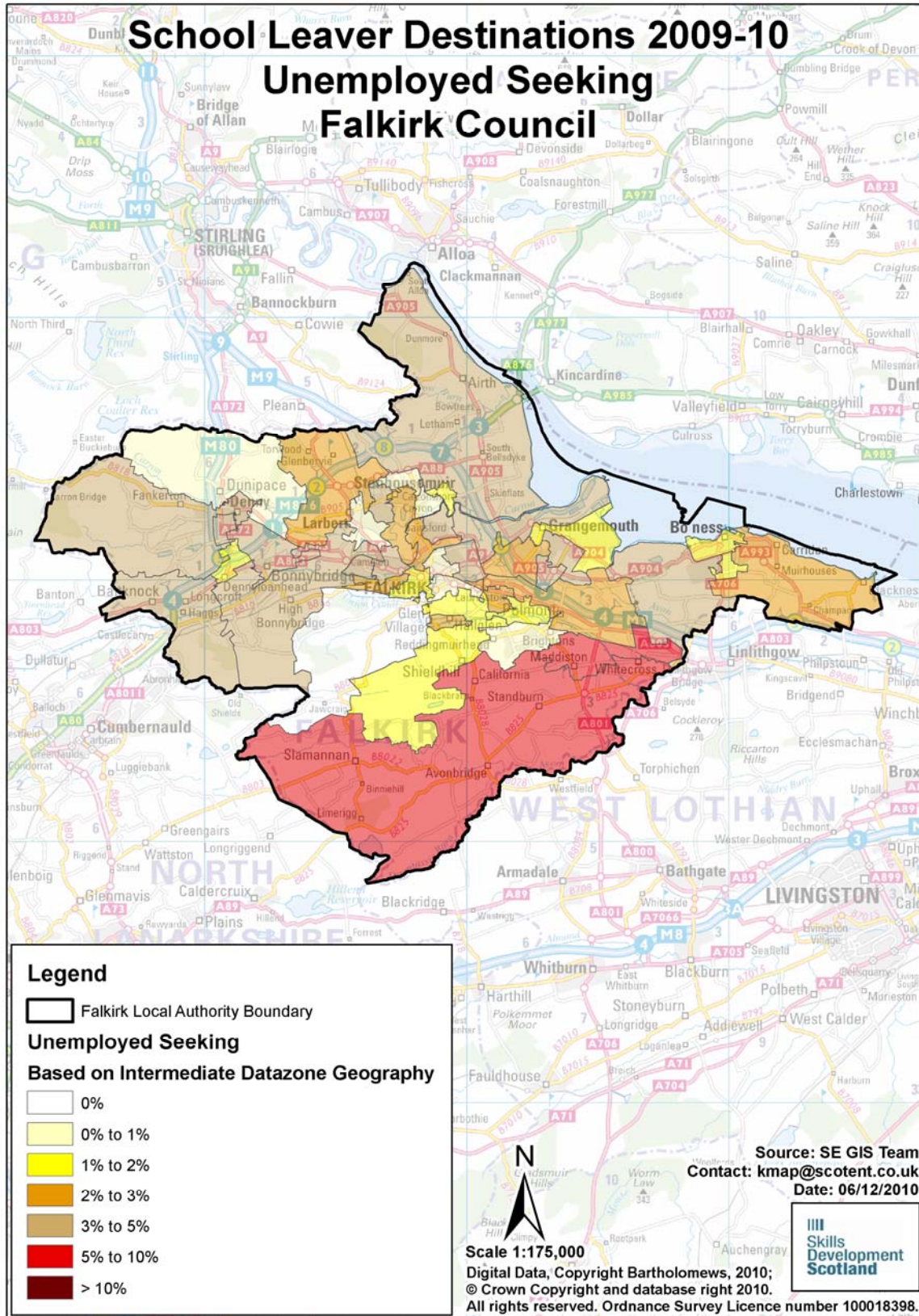
Table 21: Leavers by Intermediate Data zone

There were **219** leavers from Falkirk Council secondary schools who were reported as unemployed seeking in the SLDR. By using postcodes, we were able to identify areas within the authority where unemployed school leavers were living. However, at the snapshot, **7** of the leavers were living outside the local authority area but a further **13** unemployed seeking school leavers from other local authority schools were residing within Insert LA boundaries. The analysis below is based on **225** leavers residing in the authority and who SDS held postcode information for. The table below shows the intermediate data zones with the highest percentage of unemployed leavers.

Intermediate Data zone ^{xi}	Total	%	Intermediate Data zone	Total	%
Braes Villages	6%	14	Banknock and Hags	4%	8
Maddiston and Rumford	5%	12	Fankerton, Stoneywood and Denny Town	4%	8
Stenhousemuir West	4%	10	High Bonnybridge and Greenhill	4%	8
Bonnybridge	4%	9	Kersiebank	4%	8
Middlefield	4%	9	Kinneil	4%	8
Bainsford and Langlees	4%	8	Nethermains	4%	8

Table 22: Destinations of School Leavers: % Unemployed Seeking, 2009/10

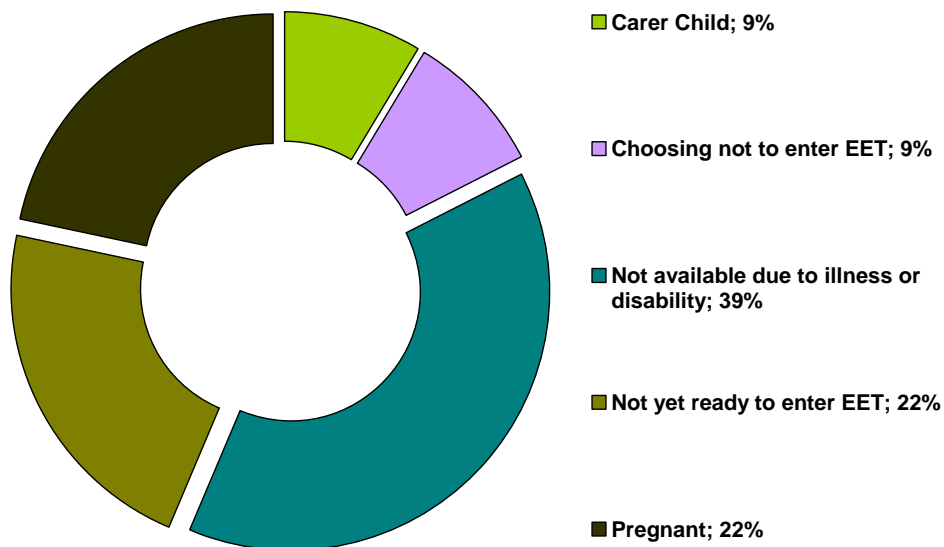
The map shows the intermediate data zones where the 225 leavers who were residing within the local authority boundary reside. Percentages have been calculated as a proportion of the number of leavers reported.



Section 3.2 Unemployed NOT Seeking

There were **23** school leavers within this category. The highest proportion of leavers reported as economically inactive are those who were not available due to illness. Those leavers who were either pregnant or had caring responsibilities for a child represent **31%** of the unemployed seeking cohort.

Table 23: Individual Circumstances of those Unemployed NOT Seeking



Section 3.3 Unknown

There were only 2 school leavers whose destination was unknown at the time of SLDR.

Table 24: Destinations by School, Percentage

School	Higher Education	Further Education	Training	Employment	Voluntary Work	Unemployed Seeking	Unemployed Not Seeking	Not Known	Total Leavers	% Pos	% Other
Bo'ness Academy	32.6%	25.9%	7.4%	20.7%	0.0%	11.9%	1.5%	0.0%	135	86.7%	13.3%
Braes High School	31.5%	19.0%	10.0%	22.5%	0.0%	16.0%	1.0%	0.0%	200	83.0%	17.0%
Denny High School	32.8%	10.3%	10.8%	27.9%	0.0%	17.6%	0.0%	0.5%	204	81.9%	18.1%
Falkirk High School	23.8%	19.8%	14.5%	22.1%	0.0%	16.9%	2.9%	0.0%	172	80.2%	19.8%
Graeme High School	34.3%	17.9%	11.4%	23.9%	0.0%	10.9%	1.5%	0.0%	201	87.6%	12.4%
Grangemouth High School	28.0%	24.2%	13.4%	18.5%	0.0%	14.0%	1.3%	0.6%	157	84.1%	15.9%
Larbert High School	37.4%	19.8%	8.3%	21.4%	0.0%	11.2%	1.9%	0.0%	313	86.9%	13.1%
St Mungo's RC High School	40.6%	18.2%	3.0%	19.4%	0.6%	16.4%	1.8%	0.0%	165	81.8%	18.2%
Falkirk Council	33.1%	19.0%	9.8%	22.2%	0.1%	14.2%	1.5%	0.1%	1,547	84.2%	15.8%

Background Notes:

- ⁱ **Positive Destinations:** includes higher education, further education, training, employment and voluntary work. See text above for explanation of each destination heading.
- ⁱⁱ **The Scottish Index of Multiple Deprivation (SIMD):** SIMD identifies small area concentrations of multiple deprivation across all of Scotland in a consistent way. SDS uses a file created by Scottish Neighbourhood Statistics to identify SIMD based on an individual leaver's postcode. The leaver's postcode is based on the last known address of the leaver as recorded on our client management system. Where there were gaps in the data held on our CMS, the last known address supplied in the annual import of pupil details has been used. As the last known postcode is used it may be that a leaver from one local authority was living in another local authority at the time of the return. Therefore, the SIMD relates to where a leaver was living and not the concentration of SIMD within a local authority.
- ⁱⁱⁱ **Stage of Leaving:** A **statutory summer leaver** is a school leaver who chooses to leave school at the earliest opportunity (31st May) when they become eligible to leave school i.e. their 16th birthday falls on or between 1st March and 30th September in their year of leaving. A **statutory winter leaver** is a school leaver who chooses to leave school at the earliest opportunity when they become eligible to leave school i.e. their 16th birthday falls between 1st October and the last day in February. A **post statutory leaver** is a school leaver who chose to remain at school past their statutory leave date e.g. a winter leaver who would have been eligible to leave at the winter leave date but choose to remain at school until the summer leave date. Included in this group are leavers who have past their statutory leave date and have left school at any stage throughout the year.
- ^{iv} **Institutions:** through our follow up of leavers, we confirm Further and Higher Education destinations and as part of the process we request further information about the institution a leaver is attending. This is not a requirement of the Scottish Government and the information displayed is based on the recorded detail on Insight.
- ^v **Personal Skills Development:** - Some leavers are not yet ready, or in a position to make an immediate transition to a formal positive destination. In such cases leavers may participate in learning opportunities / personal and social development activities with the aim of improving their confidence and employability. These programmes can be viewed as a stepping stone towards a more formal positive destination. They are often delivered by a community learning and development or third sector organisation and can include the activity agreement pilots. It was agreed, with the Scottish Government, that individuals undertaking these activities would be reported within the unemployed seeking SLDR category.
- ^{vi} **Qualifications on leaving school:** This information is based on pre-appeal information from the Scottish Qualifications Agency where SDS received information about a leaver's qualifications and a robust match of records was made. Where no match was made the qualification level has been gathered through our interaction with individuals.
- ^{vii} **Qualifications on leaving school:** This information is based on pre-appeal information from the Scottish Qualifications Agency where SDS received information about a leaver's qualifications and a robust match of records was made. Where no match was made the qualification level has been gathered through our interaction with individuals.
- ^{viii} **Looked After at Home/ Looked after away from home:** This refers to recent school leavers that SDS has recorded information that they had an episode of being looked after at home or looked after away from home. This information is gathered in a variety of ways including local SDS contact with Social Work departments, data received through the school import process or via direct contact with individuals. It is recognised that this information may not be complete when compared with similar data from social work services departments. However SDS is working with the Scottish Government and local authorities to look at improving the sharing of information in respect of these young people therefore the figures used are indicative.
- ^{ix} **Additional Support Plan Recorded:** SDS receives data from all local authority schools and school centres with pupils in stages S1-S6 or special schools to import into our client management system. We receive information about those who have co-ordinated support plans (CSP) and individualised educational programmes. We also gather information directly from individuals and via our ongoing work with schools. We acknowledge that the data may vary from that held by local authorities therefore the figures used are indicative.
- ^x **Health Factor/Additional Support Need Identified:** SDS receives data from all local authority schools and school centres with pupils in stages S1-S6 or special schools to import into our client management system. We receive information about those who have identified additional support needs. We also gather information directly from individuals and via our ongoing work with schools. We acknowledge that the data may vary from that held by local authorities therefore the figures used are indicative.

^{xi}**Intermediate Data zone Geography:** The data zone is the key small area statistical geography in Scotland. The intermediate geography is built up from data zones and can be used to disseminate statistics that are not suitable for release at the data zone level. Due to the small number of individuals it has been decided to use the intermediate level geography. There are 1235 intermediate zones in Scotland, containing on average 4000 household residents and these have been designed to respect local authority boundaries as at 2001 Census.