

School Leaver Destination Report

2009 – 2010

East Ayrshire Council

Contents

Section 1: Overview – Main Findings	3
<i>Table 1: Destination Totals</i>	4
<i>Table 2: Local Authority Comparison to Scotland</i>	4
Section 1.1 - Annual Trends	5
<i>Table 3: Trends 2000 – 2010 of Positive Destinations</i>	5
<i>Table 4: Trends 2000 – 2010 of Other Destinations</i>	5
<i>Table 5: Destinations from 2000 to 2010</i>	6
Section 1.2: Client Characteristics	6
<i>Table 6: Destination split by Gender</i>	6
<i>Table 7: Gender split within each destination</i>	7
<i>Table 9: Destination by Stage Left School.</i>	8
Section 2: Positive Destinations	9
Section 2.1 Higher and Further Education	9
<i>Table 10: HE Entrants by Institution Type</i>	9
<i>Table 11: HE Students by Institution</i>	9
<i>Table 12: HE Students by FE Colleges</i>	9
<i>Table 13: FE Students by FE Colleges</i>	10
<i>Table 14: Higher Education Course Information</i>	10
<i>Table 15: Further Education Course Information</i>	10
<i>Table 16: Course Information by Gender</i>	11
<i>Courses with less than 5 leavers have been suppressed</i>	11
<i>Table 17: Gender split within the course areas in both FE/HE</i>	11
<i>Table 18: Those entering Employment by Occupational Area</i>	12
<i>Occupational areas with less than 5 leavers have been suppressed</i>	12
<i>Table 19: Gender split within the top employment areas</i>	12
Section 3: Other Destinations	14
Section 3.1 Unemployed Seeking	14
<i>Table 20: Client Characteristics</i>	14
<i>Table 21: Leavers by Intermediate Data zone</i>	15
<i>Table 22: Destinations of School Leavers: % Unemployed Seeking, 2009/10</i>	16
Section 3.2 Unemployed NOT Seeking	17
<i>Table 23: Individual Circumstances of those Unemployed NOT Seeking</i>	17
Section 3.3 Unknown	17
<i>Table 24: Destinations by School, Percentage</i>	18
<i>Background Notes:</i>	19

Background

The School Leaver Destination Return (SLDR) is a statistical return undertaken by Skills Development Scotland (SDS) on behalf of the Scottish Government. The Return is based on a follow up of young people who left school between the 1st of August 2009 and the 31st of July 2010. This exercise was carried out during the month of September 2010.

The Scottish Government use the data produced from the Return to report against the National Indicator and target, "increase the proportion of school leavers (from Scottish publicly funded schools) in positive and sustained destinations (FE, HE, employment or training)". Partners, particularly Local Authorities, use the data to inform initiatives developed as part of the More Choices More Chances Strategy, to evidence the success of initiatives, measure progress against targets, and to identify areas to target resources to improve the post school outcomes for young people.

Methodology

The return is carried out during the month of September with staff across Skills Development Scotland following up over 55,000 school leavers. Destinations are confirmed throughout the follow up period and the destination that is reported is the destination that is known at the snapshot date. This year, we reported the information as known to us on 2nd October 2010. Destinations of young people are fluid in nature, therefore, it is possible that a leaver entered employment or training on leaving school but by the time the snapshot was taken this destination may have changed to another destination.

The information that is gathered is recorded within the SDS CMS system (Insight) which enables us to produce MIS reports and populate the data fields to be sent to the Government. This data is transferred at an individual level and undergoes a matching & validation process until a cohort is agreed. This allows the government's analytical services unit to match the client's individual outcome with other indicators such as social economic background, additional support needs and stage of leaving, etc. All information in this report, however, is based upon data held within the SDS Insight database which has been analysed to produce the graphs and tables contained within this report.

Analysis

Only leavers from publicly funded secondary schools are within the scope of the SLDR. This report relates to **1,357** leavers from publicly funded secondary schools. This relates to approximately a **3%** decrease in the number of leavers reported in the SLDR in 2008-09.

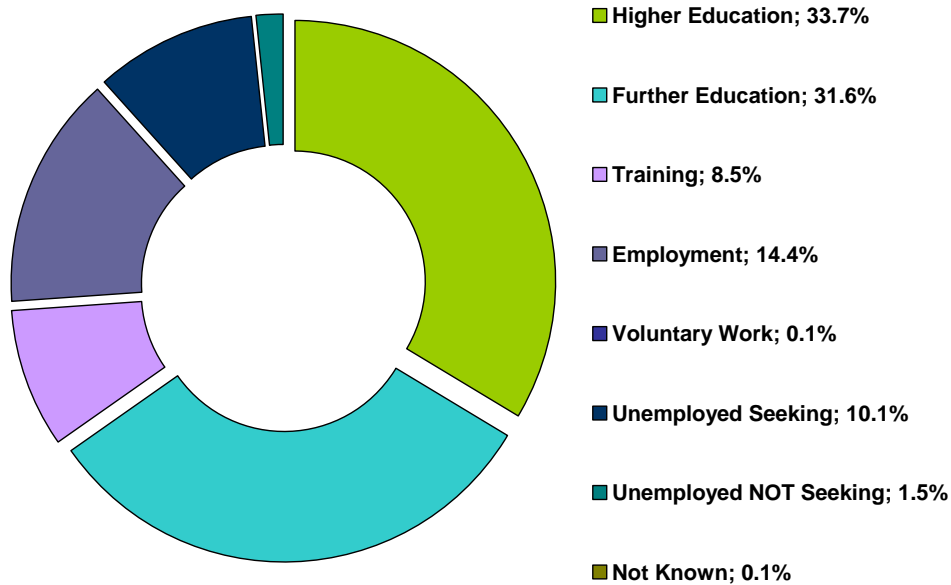
Section 1: Overview – Main Findings

- Overall the percentage of leavers entering a positive destinationⁱ is **88.4%**, an increase of **3.7%** on last year. This increase has resulted in the authority moving from the 21st highest level of positive destinations in Scotland reported in the 2008-09 SLDR to the 11th this year.
- The proportion of leavers entering further and higher education witnessed an increase this year to **65.3%**, an increase of **1%** compared to last year. The percentage of leavers entering higher education has increased by **2.8%** in comparison to last year to **33.7%** slightly lower than the Scottish average of **35.7%**. This has resulted in the authority moving from the 27th highest level of leavers entering higher education in Scotland to 21st.
- The percentage of leavers entering further education has decreased since last year to **31.6%** which is over **4%** higher than the Scottish average.
- The percentage of leavers entering employment has increased since last year from **12.7%** to **14.4%**, however, this is still lower than 2006-07 when **24%** of leavers entered employment. The percentage entering training has also increased since last year to **8.5%** from **7.6%** and is higher than the Scottish average of **5.2%**.

Skills Development Scotland East Ayrshire Council School Leaver Destination Report 2009-10

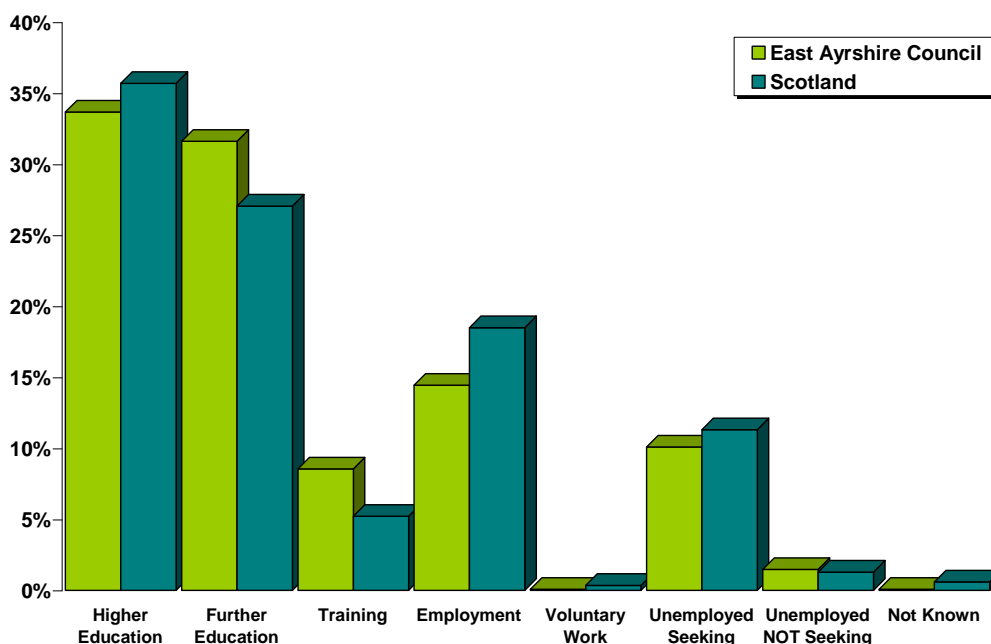
- The percentage of leavers who are unemployed seeking has decreased to **10.1%** from **11.8%**, lower (**1.2%**) than the national average.
- School leavers whose destination is unknown to SDS has fallen to **0.1%**, lower than the Scottish average of **0.6%**.

Table 1: Destination Totals



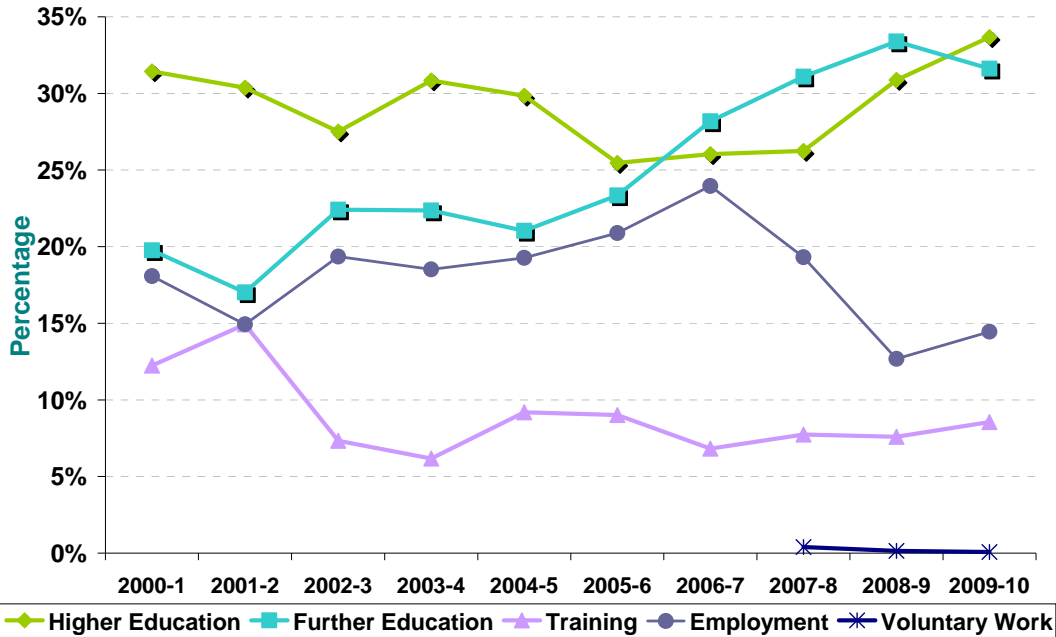
Area	Total Leavers	Higher Education	Further Education	Training	Employment	Voluntary Work	Unemployed Seeking	Unemployed NOT Seeking	Not Known
East Ayrshire	1,357	33.7% 457	31.6% 429	8.5% 116	14.4% 196	0.1% 1	10.1% 137	1.5% 20	0.1% 1
Scotland	54,097	35.7% 19,309	27.1% 14,637	5.2% 2,822	18.5% 10,005	0.3% 187	11.3% 6,117	1.3% 696	0.6% 324

Table 2: Local Authority Comparison to Scotland



Section 1.1 - Annual Trends

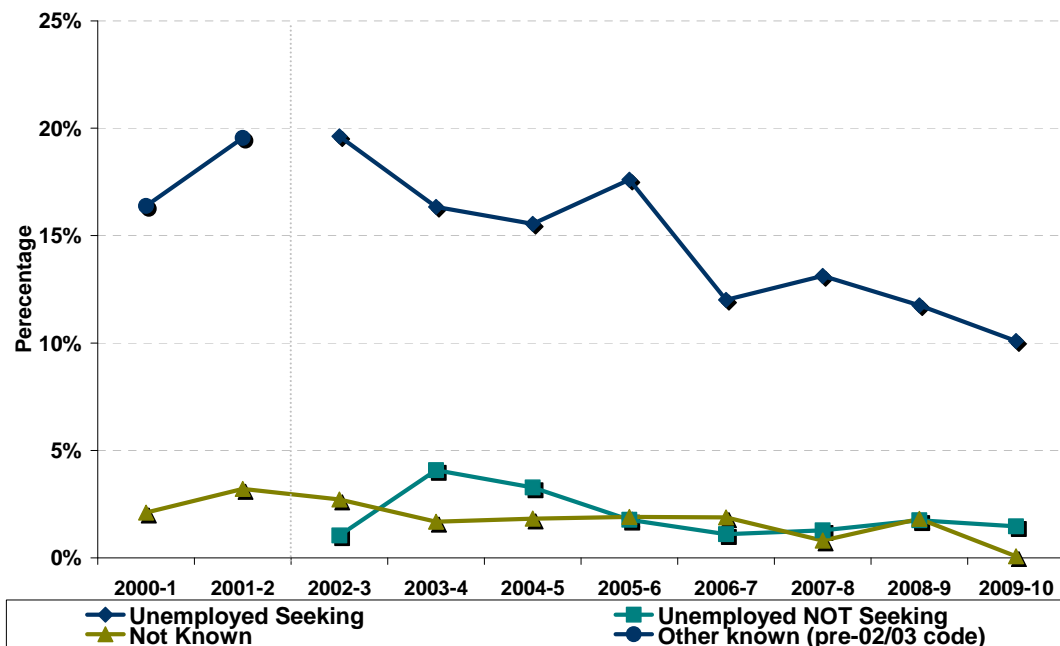
Table 3: Trends 2000 – 2010 of Positive Destinations



Note: Voluntary Work has been included as a separate destination category since the 2007-08 SLDR return but was reported within the unemployed not seeking category previously.

Since falling to its lowest level in 2005-06, the percentage of leavers entering higher education has risen year on year and is now at its highest point in ten years (33.7%). The proportion of leavers entering further education has fallen from the 10 year high point (33.4%) reported last year, however, is still higher than other years in the period. The level of those entering employment has risen from the low point of 12.7% reported last year. The percentage entering training is also still rising but remains below 10% as it has been since 2002-03 and is considerably lower than the highest level reported in 2001-02 (14.9%).

Table 4: Trends 2000 – 2010 of Other Destinations



Skills Development Scotland East Ayrshire Council School Leaver Destination Report 2009-10

The proportion of leavers reported as unemployed seeking is now at its lowest level at **10.1%**. The level of unemployed not seeking has also fallen this year, however, this is still higher than the level reported in 2006-07 (**1.1%**) at **1.5%** and considerably lower than the high point in 2003-04 (**4.1%**). The percentage of leavers unknown is at the lowest level reported during the period at **0.1%**.

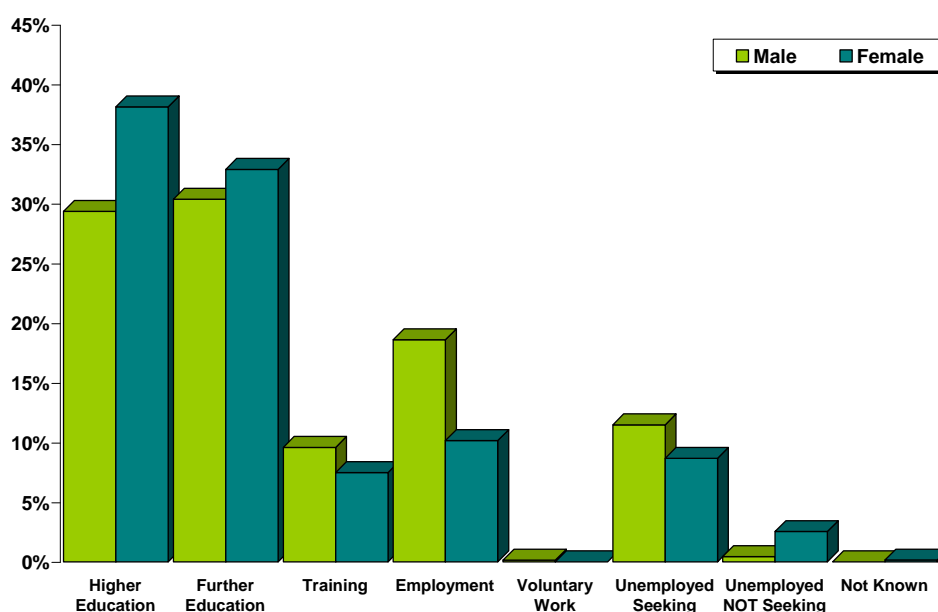
Table 5: Destinations from 2000 to 2010

Year	Total Leavers	Higher Education	Further Education	Training	Employment	Voluntary Work	Unemployed Seeking	Unemployed NOT Seeking	Not Known	Other Known
2000-1	1,422	31.4%	19.8%	12.2%	18.1%				2.1%	16.4%
2001-2	1,340	30.4%	17.0%	14.9%	14.9%				3.2%	19.6%
2002-3	1,432	27.5%	22.4%	7.3%	19.3%		19.6%	1.0%	2.7%	
2003-4	1,248	30.8%	22.4%	6.2%	18.5%		16.3%	4.1%	1.7%	
2004-5	1,588	29.8%	21.0%	9.2%	19.3%		15.6%	3.3%	1.8%	
2005-6	1,465	25.5%	23.3%	9.0%	20.9%		17.6%	1.8%	1.9%	
2006-7	1,540	26.0%	28.2%	6.8%	24.0%		12.0%	1.1%	1.9%	
2007-8	1,486	26.2%	31.1%	7.7%	19.3%	0.4%	13.1%	1.3%	0.8%	
2008-9	1,318	30.9%	33.4%	7.6%	12.7%	0.2%	11.8%	1.7%	1.8%	
2009-10	1,357	33.7%	31.6%	8.5%	14.4%	0.1%	10.1%	1.5%	0.1%	

Note: Prior to 2002-03 both the unemployed seeking and unemployed not seeking categories were reported in a separate category called Other Known. This is reflected in the table and graph above.

Section 1.2: Client Characteristics

Table 6: Destination split by Gender



Gender	Total Leavers	Higher Education	Further Education	Training	Employment	Voluntary Work	Unemployed Seeking	Unemployed NOT Seeking	Not Known
Male	688	29.4%	30.4%	9.6%	18.6%	0.1%	11.5%	0.4%	0.0%
Female	669	38.1%	32.9%	7.5%	10.2%	0.0%	8.7%	2.5%	0.1%

Female leavers (**88.6%**) are more likely than male leavers (**88.1%**) to enter positive destinations on leaving school. The proportion of female leavers who continue their education in either higher or further education is **11.3%** higher than that for males, **71%** compared to **59.7%**. The percentage of males entering employment and training (**28.2%**) is **10.6%** higher than that for females (**17.6%**). Males are more likely to become unemployed and seeking than females with **58%** of leavers reported as unemployed seeking being male.

Skills Development Scotland East Ayrshire Council School Leaver Destination Report 2009-10

Table 7: Gender split within each destination

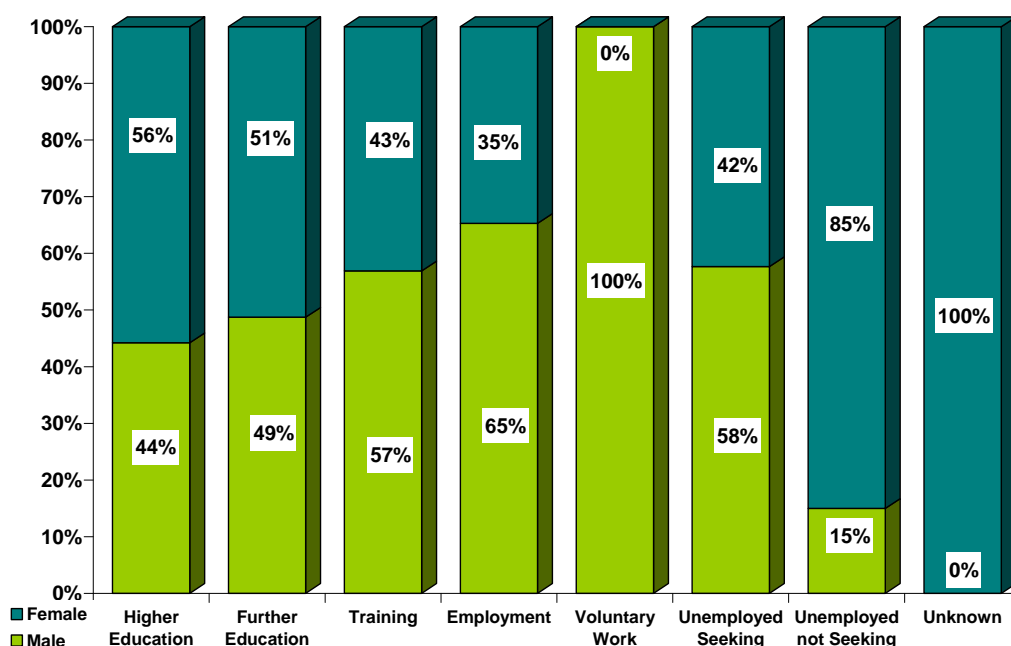


Table 8: Destination by SIMD

SIMD Decile ⁱⁱ	Most Deprived → Least Deprived									
	1	2	3	4	5	6	7	8	9	10
Higher Education	15%	24%	31%	28%	35%	51%	44%	52%	59%	59%
Further Education	38%	35%	36%	35%	35%	21%	25%	22%	21%	18%
Training	13%	14%	10%	11%	*	*	*	*	*	*
Employment	11%	17%	13%	15%	9%	19%	22%	13%	14%	16%
Voluntary Work	*	*	*	*	*	*	*	*	*	*
Unemployed Seeking	20%	9%	9%	10%	11%	*	8%	10%	*	*
U/E Not Seeking	3%	*	*	*	*	*	*	*	*	*
Unknown	*	*	*	*	*	*	*	*	*	*
Positive Destinations	77%	89%	90%	89%	84%	93%	92%	88%	97%	96%
Total	224	245	195	172	96	107	64	77	119	49
% of Total Leavers	17%	18%	14%	13%	7%	8%	5%	6%	9%	4%

Percentages based on 5 or less have been suppressed due to disclosure reasons.

- Across the SIMD areas the range entering positive destinations varies from **77%** in SIMD 1 to **97%** in SIMD 9. However, only SIMD 1 is below **80%** and the majority of the rest of the leavers reside in SIMD 2 to 4 where there is very little difference between the proportion of leavers entering positive destinations.
- Leavers who live in the least deprived areas are more likely to enter Higher Education in comparison to leavers who live in all other areas. The proportion of leavers entering higher education from the least deprived area (**59%**) is approx four times the proportion for leavers from the most deprived areas (**15%**). The proportion of leavers entering higher education rises as you move from the most deprived areas to the least deprived
- The majority of leavers from all SIMD Decile areas enter higher or further education.
- The highest proportion of leavers unemployed seeking is in SIMD 1 and then decreases as the areas become less deprived.
- There were **9** leavers whose SIMD area is unknown. All entered positive destinations.

**Skills Development Scotland East Ayrshire Council School Leaver Destination Report
2009-10**

Table 9: Destination by Stage Left School.

Stage of Leavingⁱⁱⁱ Destination	Statutory Summer Leaver	Statutory Winter Leaver	Post Statutory Leaver
Higher Education	*	*	47%
Further Education	46%	34%	28%
Training	26%	14%	3%
Employment	11%	19%	14%
Voluntary Work	*	*	*
Unemployed Seeking	16%	25%	6%
Unemployed Not Seeking	*	6%	1%
Unknown	*	*	*
Positive Destinations	83%	69%	93%
Total Leavers	236	159	962
% of Total Leavers	17%	12%	71%

- It can be noted that the highest proportion of school pupils choose to remain at school past their statutory leave date and this has an impact on their positive progression from school. Leavers who stay on past their statutory leave date are more likely to progress to positive outcomes on leaving school with the majority entering higher education.
- Statutory winter leavers are less likely to enter positive destinations and the highest proportion is reported as being in further education. Statutory winter leavers are around four times as likely to be reported as unemployed seeking than a post statutory leaver.
- The highest proportions of statutory summer leavers enter further education with training being the 2nd highest proportion.

Section 2: Positive Destinations

Section 2.1 Higher and Further Education

Higher Education (HE): This category includes leavers following HND (Higher National Diploma) or HNC (Higher National Certificate) courses, degree courses, courses for the education and training of teachers and higher level courses for professional qualifications. **6** young people with a deferred, unconditional place in higher education for next year have also been included in this year's figures.

Further Education (FE): This category includes leavers undertaking non advanced further education which is not higher education.

From those reported in the SLDR, **457** leavers entered Higher Education and **429** entered Further Education. Detailed analysis can be provided on **99.7% (883)** of this cohort for whom we hold information on institution and course chosen – Higher Education **100% (457)** & Further Education **99.3% (426)**.

Table 10: HE Entrants by Institution Type

Institution Type	Total	%
University / HE College	328	72%
FE College	127	28%
Other ¹	2	0%

¹ Other Category includes institutions out with Scotland and other private institutions

Table 11: HE Students by Institution

Institution ^{iv}	Total	%	Institution	Total	%
Strathclyde University	73	16%	Aberdeen University	8	2%
Glasgow Caledonian University	63	14%	The Robert Gordon University	8	2%
West of Scotland University	51	11%	Edinburgh University	7	2%
Glasgow University	40	9%	RSAMD	6	1%
Stirling University	27	6%	Outwith Scotland	1	0%
Scottish Agricultural College	11	2%	Other Institutions	16	4%
Abertay University Dundee	10	2%	FE Colleges	127	28%
Dundee University	9	2%			

Institutions with less than 5 leavers are included in "Other Institutions" in the table above.

Table 12: HE Students by FE Colleges

Institution	Total	%	Institution	Total	%
Kilmarnock College	40	9%	Cardonald College	10	2%
Ayr College	34	7%	Reid Kerr College	7	2%
James Watt College	13	3%	Other Institutions	12	3%
Glasgow Metropolitan College	12	3%			

Institutions with less than 5 leavers are included in "Other Institutions" in the table above.

Skills Development Scotland East Ayrshire Council School Leaver Destination Report 2009-10

Table 13: FE Students by FE Colleges

Institution	Total	%	Institution	Total	%
Kilmarnock College	231	54%	Glasgow Metropolitan College	10	2%
Ayr College	100	23%	Cardonald College	7	2%
James Watt College	38	9%	Other Institutions	16	4%
Cumnock Community College	24	6%			

Institutions with less than 5 leavers are included in "Other Institutions" in the table above.

It can be noted from tables 12 & 13 that the majority of leavers who continue their studies post school, chose to attend local institutions.

Table 14: Higher Education Course Information

Course Area	Total	%	Course Area	Total	%
Arts & Social Sciences	77	17%	Computing & ICT	21	5%
Science & Mathematics	57	12%	Law	17	4%
Health & Medicine	37	8%	Finance	16	4%
Engineering	34	7%	Construction	15	3%
Sport, Leisure & Sport Science	33	7%	Hospitality, Catering & Tourism	13	3%
Administration & Management	32	7%	Communications & Media	11	2%
Art and Design	28	6%	Social, Caring & Advisory Services	9	2%
Teaching	25	5%	Languages	6	1%
Performing Arts	22	5%	Other course areas	4	1%

Table 15: Further Education Course Information

Course Area	Total	%	Course Area	Total	%
Social, Caring & Advisory Services	64	15%	Administration & Management	13	3%
Construction	50	12%	Arts & Social Sciences	11	3%
Hairdressing & Beauty	50	12%	Security & Protective Services	11	3%
Hospitality, Catering & Tourism	35	8%	Computing & ICT	10	2%
Engineering	34	8%	Health & Medicine	10	2%
General Education (Highers, etc)	26	6%	Performing Arts	9	2%
Sport, Leisure & Sport Science	24	6%	Communications & Media	8	2%
Art and Design	21	5%	Science & Mathematics	8	2%
Garage Services	19	4%	Animals, Land & Environment	6	1%
Personal Dev. & Prep Courses	16	4%	Other course areas	1	0%

This is the 3rd year that SDS has gathered fuller data, across Scotland, about the course areas entered by school leavers. It shows that Arts & Social Science based subjects are the most popular for those entering higher education followed by Science & Mathematics.

Within further education, leavers studying vocational subjects such as Social, Caring & Advisory Services, Construction and Hairdressing & Beauty are the most popular choices.

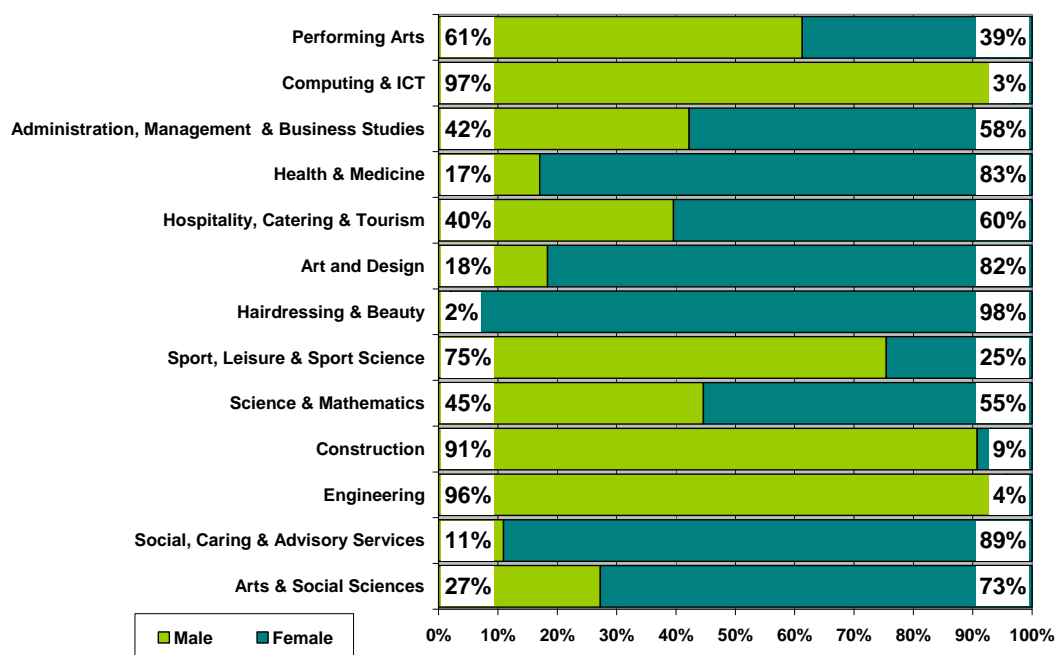
Skills Development Scotland East Ayrshire Council School Leaver Destination Report 2009-10

Table 16: Course Information by Gender

Course Area	Male		Female	
	Total	%	Total	%
Arts & Social Sciences	24	6%	64	14%
Social, Caring & Advisory Services	8	2%	65	14%
Engineering	65	16%	*	*
Construction	59	14%	6	1%
Science & Mathematics	29	7%	36	8%
Sport, Leisure & Sport Science	43	10%	14	3%
Hairdressing & Beauty	*	*	49	10%
Art and Design	9	2%	40	8%
Hospitality, Catering & Tourism	19	5%	29	6%
Health & Medicine	8	2%	39	8%
Administration & Management	19	5%	26	6%
Computing & ICT	30	7%	*	*
Performing Arts	19	5%	12	3%
General Education (Highers, etc)	8	2%	18	4%
Teaching	*	*	21	4%
Communications & Media	7	2%	12	3%
Garage Services	17	4%	*	*
Finance	12	3%	5	1%
Law	5	1%	12	3%
Personal Dev and Prep Courses	7	2%	9	2%
Security & Protective Services	9	2%	*	*
Animals, Land & Environment	7	2%	*	*
Languages	*	*	*	*
Sales & Marketing	*	*	*	*

Courses with less than 5 leavers have been suppressed

Table 17: Gender split within the course areas in both FE/HE



There has been a slight change in comparison to last year with the top three course areas for male leavers being Engineering, Construction and Sport, Leisure & Sport Science. In comparison female leavers have opted to enter subjects in Arts & Social Sciences, Social, Caring & Advisory

Skills Development Scotland East Ayrshire Council School Leaver Destination Report 2009-10

Services and Hairdressing & Beauty. The most popular area for all leavers is Arts & Social Sciences with the majority of entrants being female (73%). Subjects in Engineering, Construction and Computing & ICT remain male dominated while Social & Caring related courses are female dominated.

Section 2.2: Employment

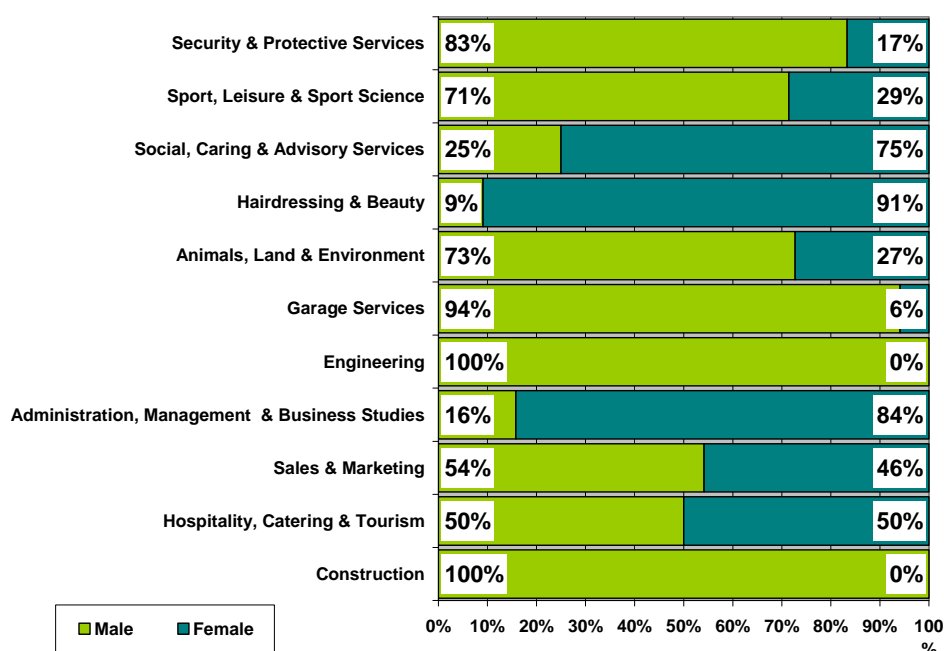
Employment: This category includes those who are employed and who are in receipt of payment from their employers. It includes young people undertaking training in employment through Skillseekers and Modern Apprenticeships. 196 young people entered employment and analysis can be provided on 98% (192) all of those entering employment for whom we hold information about the occupational area entered.

Table 18: Those entering Employment by Occupational Area

Occupational Area	Male		Female	
	Total	%	Total	%
Construction	34	27%	*	*
Hospitality, Catering & Tourism	13	10%	13	19%
Sales & Marketing	13	10%	11	16%
Administration & Management	3	2%	16	24%
Engineering	17	14%	*	*
Garage Services	16	13%	*	*
Animals, Land & Environment	8	6%	*	*
Hairdressing & Beauty	*	*	10	15%
Social, Caring & Advisory Services	*	*	6	9%
Sport, Leisure & Sport Science	5	4%	*	*
Security & Protective Services	5	4%	*	*
Transport & Distribution	5	4%	*	*
Manufacturing	*	*	*	*
Health & Medicine	*	*	*	*

Occupational areas with less than 5 leavers have been suppressed

Table 19: Gender split within the top employment areas



Skills Development Scotland East Ayrshire Council School Leaver Destination Report 2009-10

The most popular area of employment entered by school leavers is Construction with all the entrants being male. Sales & Marketing (including retail operations) has slipped from being the most popular area last year to the 3rd most popular area this year. Hospitality, Catering & Tourism is now the 2nd most popular area of employment whereas last year it was 4th. The most popular area for females is Administration & Management with **24%** of leavers gaining employment in this area, a **13%** increase from last year. Following that is Sales & Marketing, Hospitality, Catering & Tourism and Administration & Management with **59%** entering these areas. Apart from Construction, the other popular occupation areas for male leavers are Engineering and Garage Services with **54%** entering these 3 areas.

All the leavers who enter the occupational areas of Construction and Engineering are male and Hairdressing & Beauty roles remain female dominated but half of the leavers who find work in Hospitality, Catering & Tourism are male.

Section 3: Other Destinations

School leavers who do not achieve a positive destination on leaving school are known as the MCMC group and are key customers for Skills Development Scotland and our partner organisations. The SLDR is a snapshot in time and should only be used as an indicator.

Unemployed and seeking employment or training: This category includes those who are in contact with SDS and are known by them to be seeking employment or training. This is based on regular contact between SDS and the client. This does not refer to the definition of 'unemployed' used by the Benefits Agency to calculate published unemployment rates. In 2009-10 it also included those individuals undertaking personal skills development^v 0% of the unemployed seeking cohort.

Unemployed and not seeking employment or training: This category includes all those individuals who are not seeking employment or training for a range of reasons. These individual circumstances may involve sickness, prison, pregnancy, caring for children or other dependents or taking time out.

Section 3.1 Unemployed Seeking

The table provides a comparison of the percentage of unemployed seeking clients with specific characteristics as opposed to the rate of the full SLDR cohort.

Table 20: Client Characteristics

Characteristics	% of Full SLDR	% of Unemployed Seeking
Gender		
Male	51%	58%
Female	49%	42%
Stage Left School		
Statutory Summer Leaver	17%	28%
Statutory Winter Leaver	12%	29%
Post Statutory Leaver	71%	43%
Qualifications on Leaving School^{vi}		
Access 1 / No formal Qualifications	2%	6%
Access 2&3/Foundation Stand. Grade	4%	15%
General Standard Grade/ Intermediate 1	20%	38%
Credit Standard Grade/ Intermediate 2	26%	22%
Highers/Advanced Higher	47%	19%
Unknown	1%	1%
Health And Additional Support Needs^{vii}		
Looked After at Home/ Looked after away from home ^{viii}	4%	15%
Additional Support Plan Recorded ^{ix}	5%	7%
Health Factor/Additional Support Need Identified ^x	9%	15%

Skills Development Scotland East Ayrshire Council School Leaver Destination Report 2009-10

Table 20: Client Characteristics (cont)

Characteristics		% of Full SLDR	% of Unemployed Seeking
SIMD Decile Ranking /Deprivation (SIMD 2009)			
Most deprived	1	17%	33%
	2	18%	17%
	3	14%	12%
	4	13%	12%
	5	7%	8%
	6	8%	4%
	7	5%	4%
	8	6%	6%
	9	9%	3%
Least Deprived	10	4%	1%
	Unknown	1%	0%

- Although male leavers account for **51%** of the leaving cohort they account for **58%** of leavers reported as unemployed seeking.
- Statutory winter leavers represent only **12%** of the whole SLDR cohort but are disproportionately represented within the leavers reported as unemployed seeking at **29%**, as are statutory summer leavers who represent **17%** of the cohort and **28%** of unemployed seeking
- The largest proportion of unemployed seeking leavers have general level standard grades.
- Leavers who had a period of being looked after at home or away from home are also disproportionately represented within the leavers reported as unemployed seeking

Table 21: Leavers by Intermediate Data zone

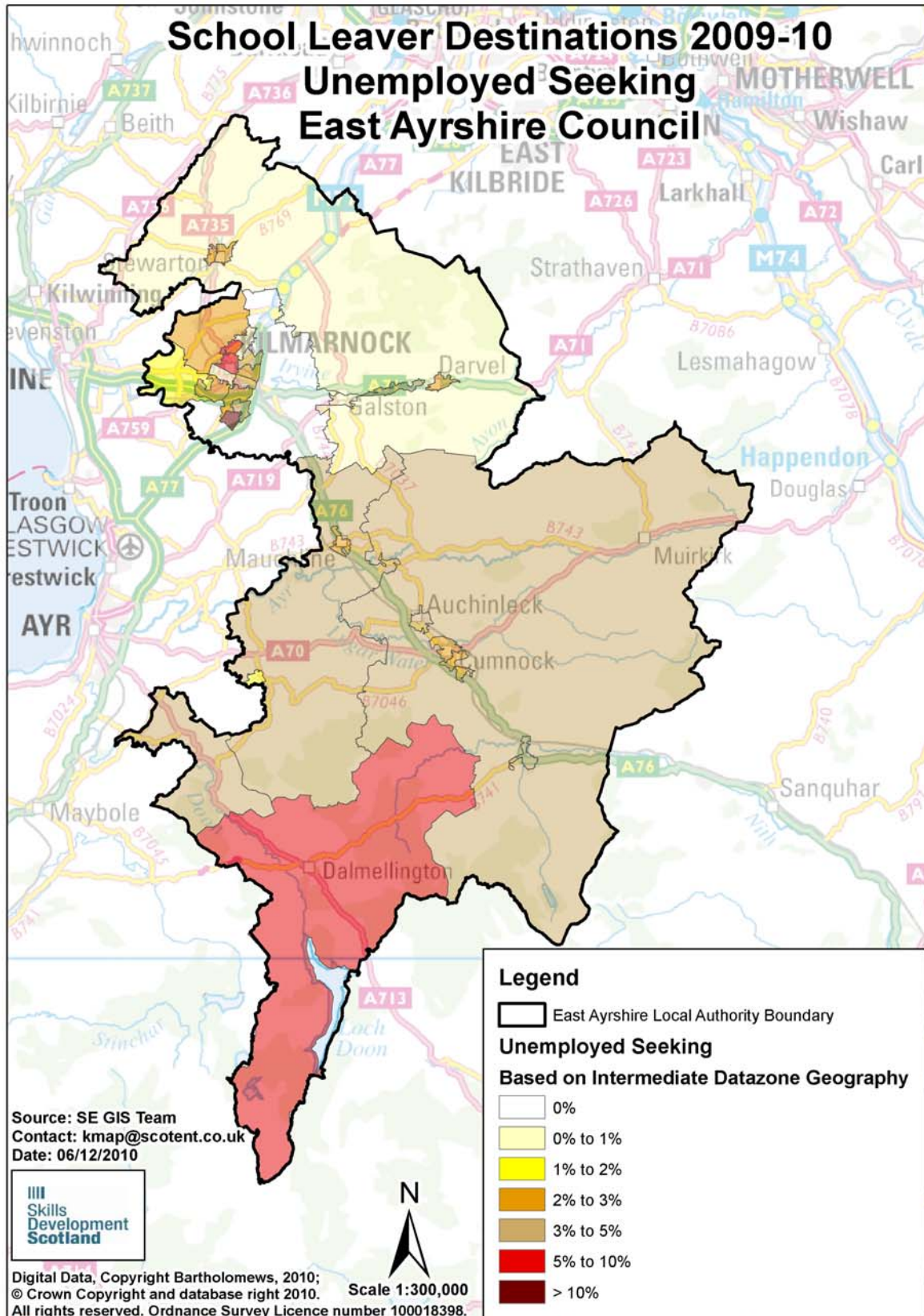
There were **137** leavers from East Ayrshire schools who were reported as unemployed seeking in the SLDR. By using postcodes, we were able to identify areas within the authority where unemployed school leavers were living. However, at the snapshot, **9** of the leavers were living outside the local authority area but a further **12** unemployed seeking school leavers from other local authority schools were residing within the local authority boundaries. The analysis below is based on **140** leavers residing in the authority and who SDS held postcode information for. The table below shows the intermediate data zones with the highest percentage of unemployed leavers.

Intermediate Data zone ^{xi}	Total	%	Intermediate Data zone	Total	%
Shortlees	15	11%	Auchinleck	6	4%
Altonhill North and Onthank	11	8%	Bellfield and Kirkstyle	6	4%
Doon Valley South	9	6%	Dean and New Farm Loch North	6	4%
Altonhill South, Longpark and Hillhead	8	6%	Piersland	6	4%
Cumnock Rural	7	5%	Doon Valley North	5	4%
New Cumnock	7	5%	Mauchline Rural	5	4%

Intermediate Data zone areas with less than 5 leavers have been suppressed

Table 22: Destinations of School Leavers: % Unemployed Seeking, 2009/10

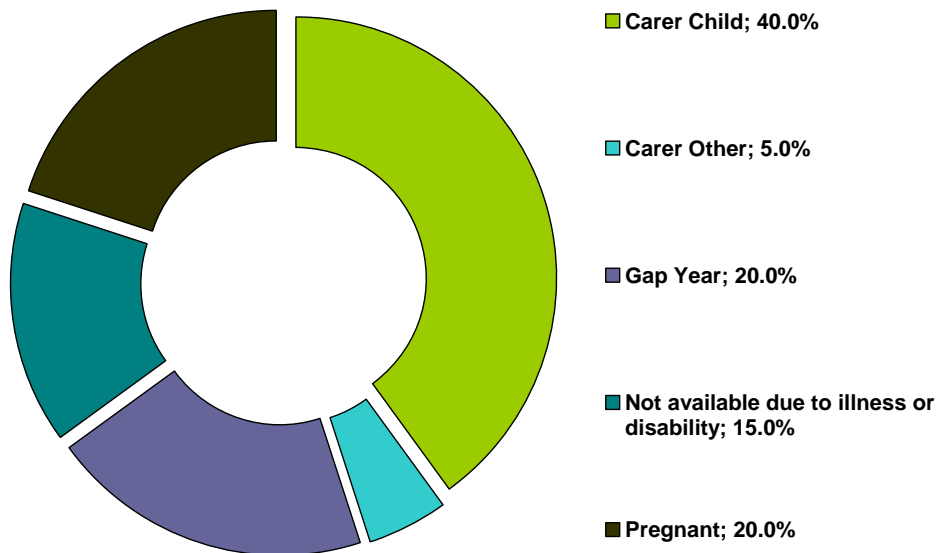
The map shows the intermediate data zones where the 140 leavers who were residing within the local authority boundary reside. Percentages have been calculated as a proportion of the number of leavers reported



Section 3.2 Unemployed NOT Seeking

There were **20** school leavers within this category.

Table 23: Individual Circumstances of those Unemployed NOT Seeking



Section 3.3 Unknown

There was **1** school leaver whose current destination was unknown at the time of SLDR.

**Skills Development Scotland East Ayrshire Council School Leaver Destination Report
2009-10**

Table 24: Destinations by School, Percentage

School	Higher Education	Further Education	Training	Employment	Voluntary Work	Unemployed Seeking	Unemployed Not Seeking	Not Known	Total Leavers	% Pos	% Other
Auchinleck Academy	31.3%	30.2%	10.1%	18.4%	0.0%	7.8%	2.2%	0.0%	179	89.9%	10.1%
Cumnock Academy	32.8%	29.2%	10.9%	14.6%	0.0%	9.9%	2.6%	0.0%	192	87.5%	12.5%
Doon Academy	12.0%	44.0%	14.7%	18.7%	0.0%	10.7%	0.0%	0.0%	75	89.3%	10.7%
Grange Academy	38.6%	26.4%	8.1%	15.2%	0.0%	11.2%	0.5%	0.0%	197	88.3%	11.7%
James Hamilton Academy	31.2%	33.9%	5.5%	15.6%	0.9%	11.0%	1.8%	0.0%	109	87.2%	12.8%
Kilmarnock Academy	34.5%	31.0%	3.5%	14.8%	0.0%	14.1%	2.1%	0.0%	142	83.8%	16.2%
Loudoun Academy	33.2%	34.8%	10.3%	14.1%	0.0%	7.1%	0.5%	0.0%	184	92.4%	7.6%
St Joseph's Academy	35.6%	31.3%	8.8%	11.3%	0.0%	11.9%	0.6%	0.6%	160	86.9%	13.1%
Stewarton Academy	43.7%	32.8%	5.0%	7.6%	0.0%	8.4%	2.5%	0.0%	119	89.1%	10.9%
East Ayrshire Council	33.7%	31.6%	8.5%	14.4%	0.1%	10.1%	1.5%	0.1%	1,357	88.4%	11.6%

Background Notes:

ⁱ **Positive Destinations:** includes higher education, further education, training, employment and voluntary work. See text above for explanation of each destination heading.

ⁱⁱ **The Scottish Index of Multiple Deprivation (SIMD):** SIMD identifies small area concentrations of multiple deprivation across all of Scotland in a consistent way. SDS uses a file created by Scottish Neighbourhood Statistics to identify SIMD based on an individual leaver's postcode. The leaver's postcode is based on the last known address of the leaver as recorded on our client management system. Where there were gaps in the data held on our CMS, the last known address supplied in the annual import of pupil details has been used. As the last known postcode is used it may be that a leaver from one local authority was living in another local authority at the time of the return. Therefore, the SIMD relates to where a leaver was living and not the concentration of SIMD within a local authority.

ⁱⁱⁱ **Stage of Leaving:** A **statutory summer leaver** is a school leaver who chooses to leave school at the earliest opportunity (31st May) when they become eligible to leave school i.e. their 16th birthday falls on or between 1st March and 30th September in their year of leaving. A **statutory winter leaver** is a school leaver who chooses to leave school at the earliest opportunity when they become eligible to leave school i.e. their 16th birthday falls between 1st October and the last day in February. A **post statutory leaver** is a school leaver who chose to remain at school past their statutory leave date e.g. a winter leaver who would have been eligible to leave at the winter leave date but choose to remain at school until the summer leave date. Included in this group are leavers who have past their statutory leave date and have left school at any stage throughout the year.

^{iv} **Institutions:** through our follow up of leavers, we confirm Further and Higher Education destinations and as part of the process we request further information about the institution a leaver is attending. This is not a requirement of the Scottish Government and the information displayed is based on the recorded detail on Insight, the SDS

^v **Personal Skills Development:** - Some leavers are not yet ready, or in a position to make an immediate transition to a formal positive destination. In such cases leavers may participate in learning opportunities / personal and social development activities with the aim of improving their confidence and employability. These programmes can be viewed as a stepping stone towards a more formal positive destination. They are often delivered by a community learning and development or third sector organisation and can include the activity agreement pilots. It was agreed, with the Scottish Government, that individuals undertaking these activities would be reported within the unemployed seeking SLDR category.

^{vi} **Qualifications on leaving school:** This information is based on pre-appeal information from the Scottish Qualifications Agency where SDS received information about a leaver's qualifications and a robust match of records was made. Where no match was made the qualification level has been gathered through our interaction with individuals.

^{vii} **Qualifications on leaving school:** This information is based on pre-appeal information from the Scottish Qualifications Agency where SDS received information about a leaver's qualifications and a robust match of records was made. Where no match was made the qualification level has been gathered through our interaction with individuals.

^{viii} **Looked After at Home/ Looked after away from home:** This refers to recent school leavers that SDS has recorded information that they had an episode of being looked after at home or looked after away from home. This information is gathered in a variety of ways including local SDS contact with Social Work departments, data received through the school import process or via direct contact with individuals. It is recognised that this information may not be complete when compared with similar data from social work services departments. However SDS is working with the Scottish Government and local authorities to look at improving the sharing of information in respect of these young people therefore the figures used are indicative.

^{ix} **Additional Support Plan Recorded:** SDS receives data from all local authority schools and school centres with pupils in stages S1-S6 or special schools to import into our client management system. We receive information about those who have co-ordinated support plans (CSP) and individualised educational programmes. We also gather information directly from individuals and via our ongoing work with schools. We acknowledge that the data may vary from that held by local authorities therefore the figures used are indicative.

^x **Health Factor/Additional Support Need Identified:** SDS receives data from all local authority schools and school centres with pupils in stages S1-S6 or special schools to import into our client management system. We receive information about those who have identified additional support needs. We also gather information directly from individuals and via our ongoing work with schools. We acknowledge that the data may vary from that held by local authorities therefore the figures used are indicative.

^{xi}**Intermediate Data zone Geography:** The data zone is the key small area statistical geography in Scotland. The intermediate geography is built up from data zones and can be used to disseminate statistics that are not suitable for release at the data zone level. Due to the small number of individuals it has been decided to use the intermediate level geography. There are 1235 intermediate zones in Scotland, containing on average 4000 household residents and these have been designed to respect local authority boundaries as at 2001 Census.