

School Leaver Destination Report

2009 – 2010

Dumfries and Galloway Council

Contents

Section 1: Overview – Main Findings	3
<i>Table 1: Destination Totals.....</i>	4
<i>Table 2: Local Authority Comparison to Scotland</i>	4
Section 1.1 - Annual Trends	5
<i>Table 3: Trends 2000 – 2010 of Positive Destinations</i>	5
<i>Table 4: Trends 2000 – 2010 of Other Destinations</i>	5
<i>Table 5: Destinations from 2000 to 2010</i>	6
Section 1.2: Client Characteristics.....	6
<i>Table 6: Destination split by Gender</i>	6
<i>Table 7: Gender split within each destination</i>	7
<i>Table 9: Destination by Stage Left School.</i>	8
Section 2: Positive Destinations	8
Section 2.1 Higher and Further Education	8
<i>Table 10: HE Entrants by Institution Type</i>	8
<i>Table 11: HE Students by Institution</i>	9
<i>Table 12: HE Students by FE Colleges</i>	9
<i>Table 13: FE Students by FE Colleges</i>	9
<i>Table 14: Higher Education Course Information</i>	9
<i>Table 15: Further Education Course Information</i>	10
<i>Table 16: Course Information by Gender</i>	10
Courses with less than 5 leavers have been suppressed	10
<i>Table 17: Gender split within the course areas in both FE/HE.....</i>	11
<i>Table 18: Those entering Employment by Occupational Area</i>	12
Occupational areas with less than 5 leavers have been suppressed	12
<i>Table 19: Gender split within the top employment areas</i>	12
Section 3: Other Destinations	14
Section 3.1 Unemployed Seeking	14
<i>Table 20: Client Characteristics</i>	14
<i>Table 21: Leavers by Intermediate Data zone</i>	15
<i>Table 22: Destinations of School Leavers: % Unemployed Seeking, 2009/10</i>	16
Section 3.2 Unemployed NOT Seeking	17
<i>Table 23: Individual Circumstances of those Unemployed NOT Seeking</i>	17
Section 3.3 Unknown.....	17
<i>Table 24: Destinations by School, Percentage</i>	18
Background Notes:	19

Background

The School Leaver Destination Return (SLDR) is a statistical return undertaken by Skills Development Scotland (SDS) on behalf of the Scottish Government. The Return is based on a follow up of young people who left school between the 1st of August 2009 and the 31st of July 2010. This exercise was carried out during the month of September 2010.

The Scottish Government use the data produced from the Return to report against the National Indicator and target, "increase the proportion of school leavers (from Scottish publicly funded schools) in positive and sustained destinations (FE, HE, employment or training)". Partners, particularly Local Authorities, use the data to inform initiatives developed as part of the More Choices More Chances Strategy, to evidence the success of initiatives, measure progress against targets, and to identify areas to target resources to improve the post school outcomes for young people.

Methodology

The return is carried out during the month of September with staff across Skills Development Scotland following up over 55,000 school leavers. Destinations are confirmed throughout the follow up period and the destination that is reported is the destination that is known at the snapshot date. This year, we reported the information as known to us on 2nd October 2010. Destinations of young people are fluid in nature, therefore, it is possible that a leaver entered employment or training on leaving school but by the time the snapshot was taken this destination may have changed to another destination.

The information that is gathered is recorded within the SDS CMS system (Insight) which enables us to produce MIS reports and populate the data fields to be sent to the Government. This data is transferred at an individual level and undergoes a matching & validation process until a cohort is agreed. This allows the government's analytical services unit to match the client's individual outcome with other indicators such as social economic background, additional support needs and stage of leaving, etc. All information in this report, however, is based upon data held within the SDS Insight database which has been analysed to produce the graphs and tables contained within this report.

Analysis

Only leavers from publicly funded secondary schools are within the scope of the SLDR. This report relates to **1,629** leavers from publicly funded secondary schools. This relates to approximately a **2%** decrease in the number of leavers reported in the SLDR in 2008-09.

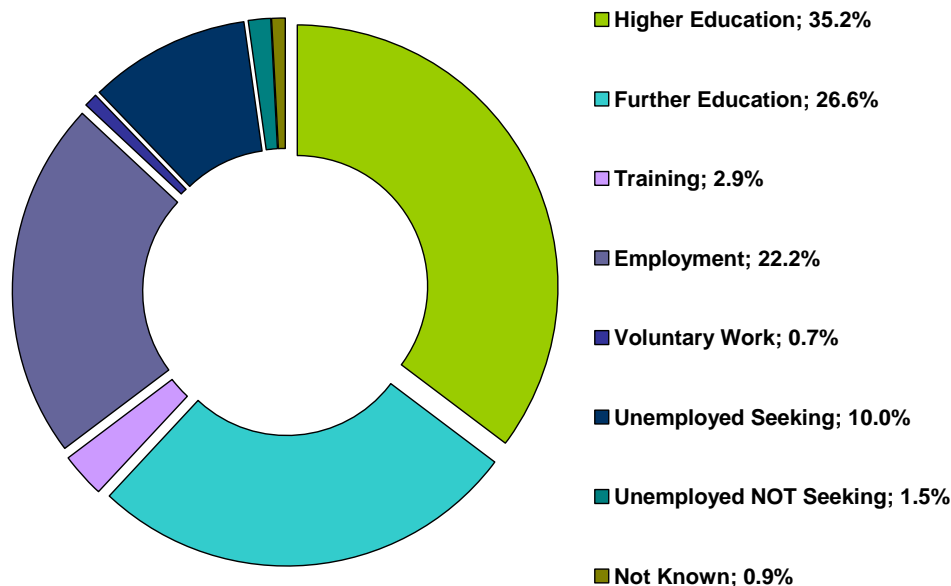
Section 1: Overview – Main Findings

- Overall the percentage of leavers entering a positive destinationⁱ is **87.7%**, a decrease of **2%** on last year. This decrease has resulted in the authority moving from the 7th highest level of positive destinations in Scotland reported in the 2008-09 SLDR to the 17th this year.
- The proportion of leavers entering further and higher education witnessed a decrease this year to **61.8%**, a decrease of **2.8%** compared to last year. The percentage of leavers entering higher education has increased by **1.6%** in comparison to last year to **35.2%** slightly lower than the Scottish average of **35.7%**. This has resulted in the authority moving from the 20th highest level of leavers entering higher education in Scotland to 17th.
- The percentage of leavers entering further education has decreased since last year to **26.6%** which is just over **0.5%** lower than the Scottish average.
- The percentage of leavers entering employment has increased since last year from **21.8%** to **22.2%**, however, this is still lower than 2006-07 when **30.5%** of leavers entered employment. The percentage entering training is the same as last year at **2.9%**, considerably lower than the Scottish average of **5.2%**.

Skills Development Scotland Dumfries & Galloway Council School Leaver Destination Report 2009-10

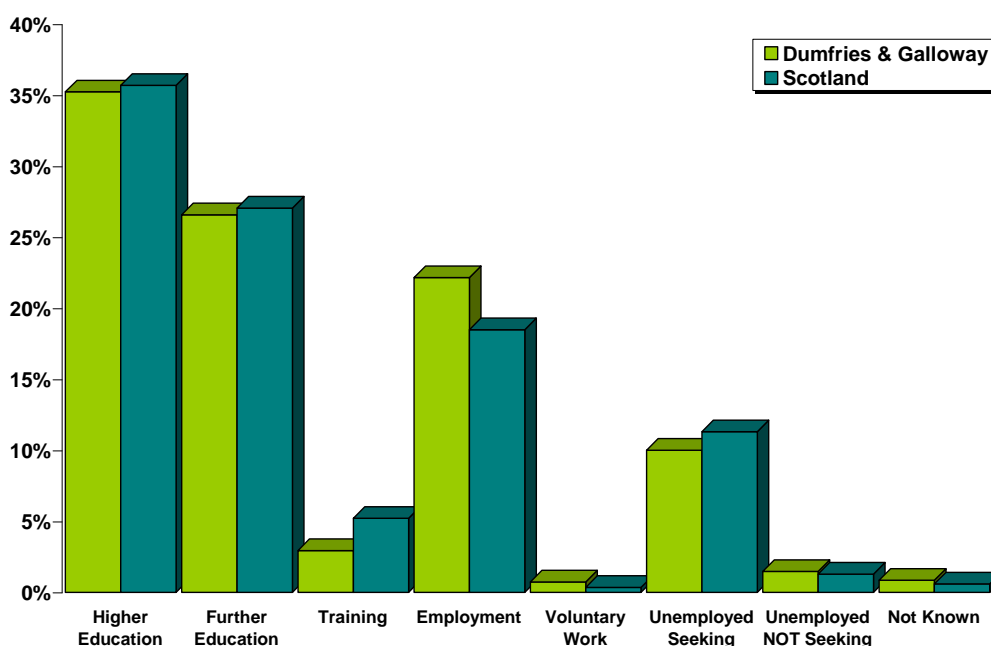
- The percentage of leavers who are unemployed seeking has increased to **10.0%** from **8.4%**, lower (**1.6%**) than the national average.
- School leavers whose destination is unknown to SDS has remained at **0.9%**, slightly higher than the Scottish average of **0.6%**.

Table 1: Destination Totals



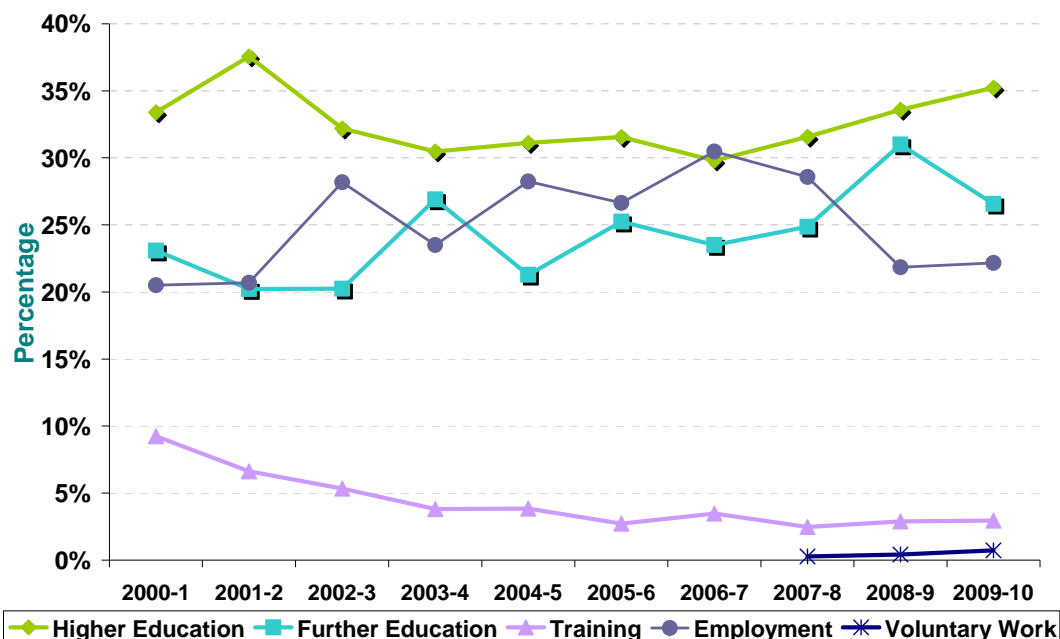
Area	Total Leavers	Higher Education	Further Education	Training	Employment	Voluntary Work	Unemployed Seeking	Unemployed NOT Seeking	Not Known
Dumfries and Galloway	1,629	35.2% 574	26.6% 433	2.9% 48	22.2% 361	0.7% 12	10.0% 163	1.5% 24	0.9% 14
Scotland	54,097	35.7% 19,309	27.1% 14,637	5.2% 2,822	18.5% 10,005	0.3% 187	11.3% 6,117	1.3% 696	0.6% 324

Table 2: Local Authority Comparison to Scotland



Section 1.1 - Annual Trends

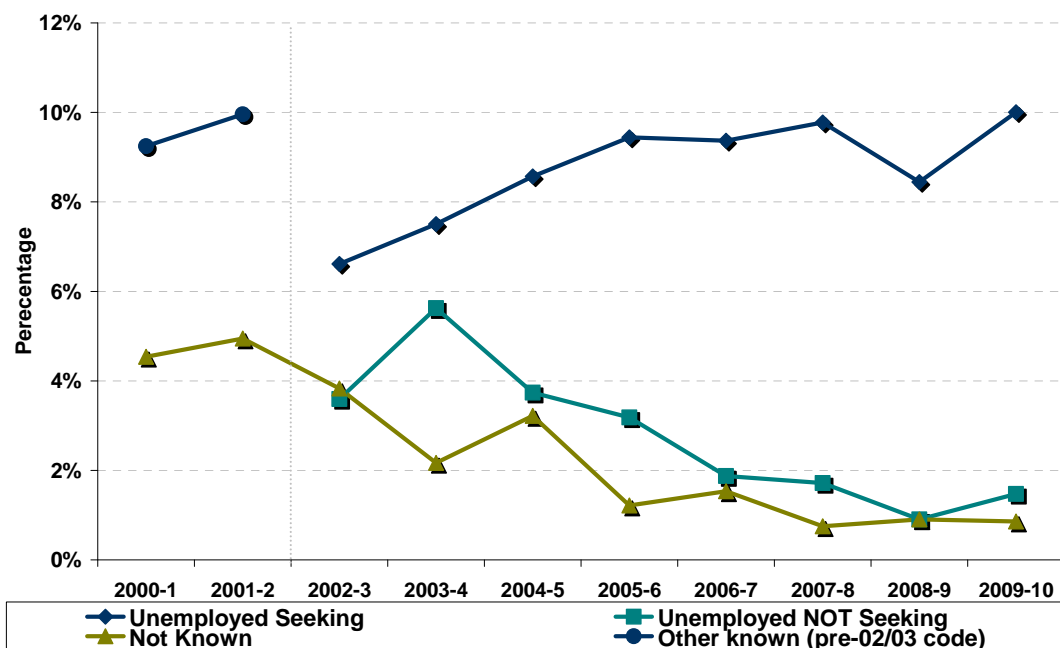
Table 3: Trends 2000 – 2010 of Positive Destinations



Note: Voluntary Work has been included as a separate destination category since the 2007- 08 SLDR return but was reported within the unemployed not seeking category previously.

Since falling to its lowest level in 2006-07, the percentage of leavers entering higher education has risen year on year and is now only **2.4%** lower than the high point in 2001-02. The proportion of leavers entering further education has fallen from the 10 year high point reported last year, however, is still higher than other years in the period except for 2003-04, which was slightly higher at **26.9%**. The level of those entering employment appears to have stopped falling from the high point of **30.5%** reported in 2006-07. The percentage entering training has been below 3% since 2007-08 and is considerably lower than the highest level reported (**9.2%**) in 2000-01.

Table 4: Trends 2000 – 2010 of Other Destinations



Skills Development Scotland Dumfries & Galloway Council School Leaver Destination Report 2009-10

The proportion of leavers reported as unemployed seeking is now at its highest level at **10%**. The level of unemployed not seeking has increased this year, however, this is still lower than the level reported in 2007-08 at **1.5%** and considerably lower than the high point in 2003-04. The percentage of leavers unknown has remained below **1%** since 2007-08.

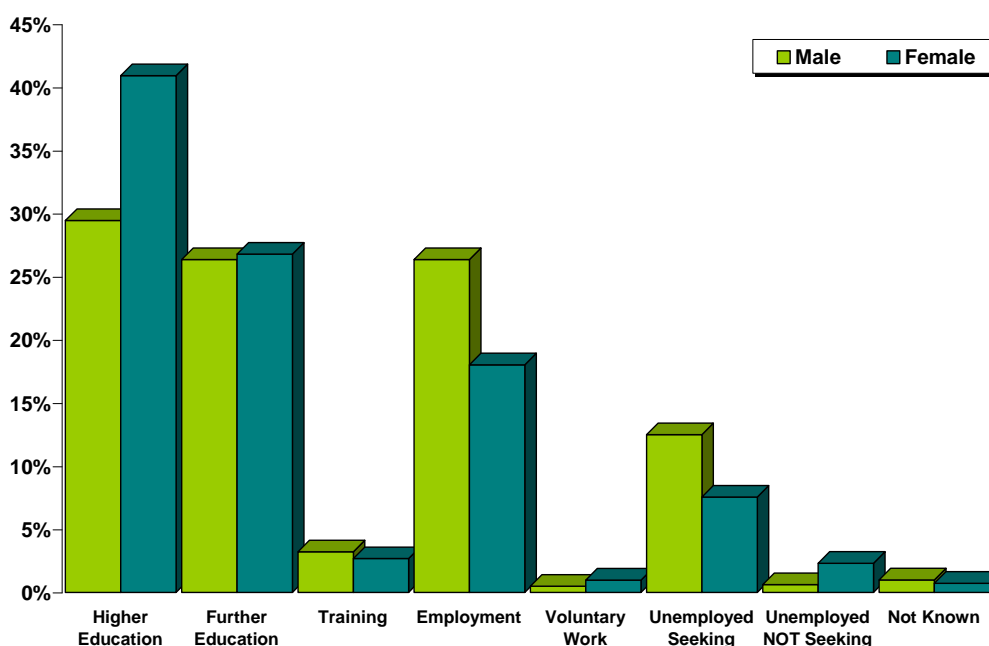
Table 5: Destinations from 2000 to 2010

Year	Total Leavers	Higher Education	Further Education	Training	Employment	Voluntary Work	Unemployed Seeking	Unemployed NOT Seeking	Not Known	Other Known
2000-1	1,785	33.4%	23.1%	9.2%	20.5%				4.5%	9.2%
2001-2	1,677	37.6%	20.2%	6.6%	20.7%				4.9%	10.0%
2002-3	1,724	32.2%	20.2%	5.3%	28.2%		6.6%	3.6%	3.8%	
2003-4	1,706	30.5%	26.9%	3.8%	23.5%		7.5%	5.6%	2.2%	
2004-5	1,739	31.1%	21.3%	3.9%	28.2%		8.6%	3.7%	3.2%	
2005-6	1,727	31.6%	25.2%	2.7%	26.6%		9.4%	3.2%	1.2%	
2006-7	1,762	29.8%	23.5%	3.5%	30.5%		9.4%	1.9%	1.5%	
2007-8	1,862	31.6%	24.9%	2.5%	28.6%	0.3%	9.8%	1.7%	0.8%	
2008-9	1,658	33.6%	31.0%	2.9%	21.8%	0.4%	8.4%	0.9%	0.9%	
2009-10	1,629	35.2%	26.6%	2.9%	22.2%	0.7%	10.0%	1.5%	0.9%	

Note: Prior to 2002-03 both the unemployed seeking and unemployed not seeking categories were reported in a separate category called Other Known. This is reflected in the table and graph above.

Section 1.2: Client Characteristics

Table 6: Destination split by Gender



Gender	Total Leavers	Higher Education	Further Education	Training	Employment	Voluntary Work	Unemployed Seeking	Unemployed NOT Seeking	Not Known
Male	808	29.5%	26.4%	3.2%	26.4%	0.5%	12.5%	0.6%	1.0%
Female	821	40.9%	26.8%	2.7%	18.0%	1.0%	7.6%	2.3%	0.7%

Female leavers (**89.4%**) are more likely than male leavers (**85.9%**) to enter positive destinations on leaving school. The proportion of female leavers who continue their education in either higher or further education is **11.9%** higher than that for males, **67.7%** compared to **55.8%**. The percentage of males entering employment and training (**29.6%**) is **8.9%** higher than that for females (**20.7%**). Males are more likely to become unemployed and seeking than females with over **62%** of leavers reported as unemployed seeking being male.

Skills Development Scotland Dumfries & Galloway Council School Leaver Destination Report 2009-10

Table 7: Gender split within each destination

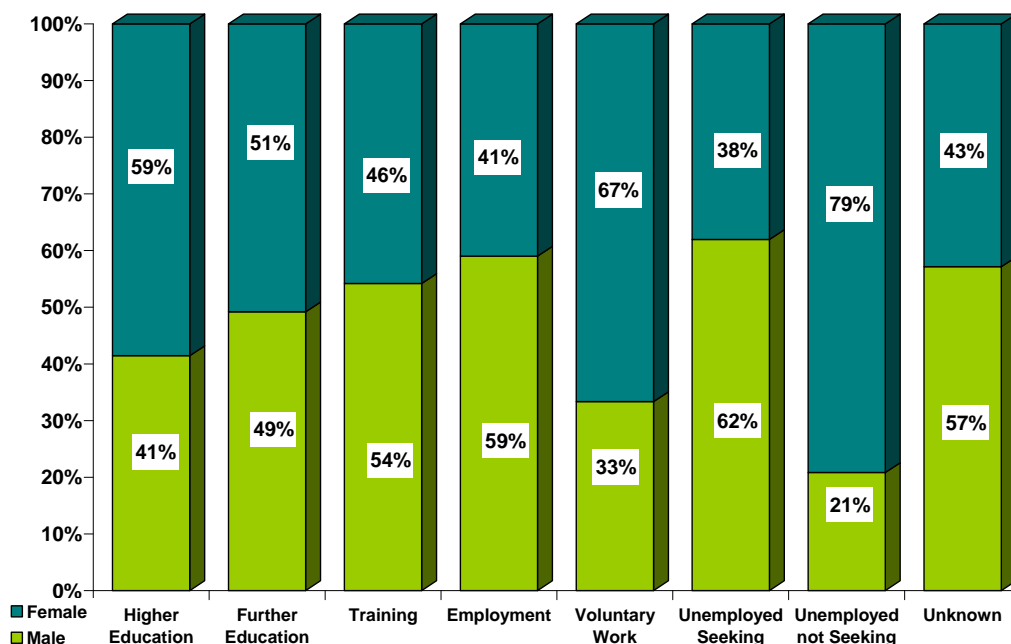


Table 8: Destination by SIMD

SIMD Decile ⁱⁱ	Most Deprived → Least Deprived									
	1	2	3	4	5	6	7	8	9	10
Higher Education	19%	22%	24%	28%	37%	35%	43%	39%	55%	70%
Further Education	35%	40%	27%	32%	28%	25%	21%	24%	17%	7%
Training	14%	*	*	*	*	*	*	*	*	*
Employment	8%	15%	21%	24%	20%	26%	26%	21%	20%	20%
Voluntary Work	*	*	*	*	*	*	*	*	*	*
Unemployed Seeking	22%	14%	18%	11%	11%	9%	*	8%	*	*
U/E Not Seeking	*	*	*	*	*	*	*	*	*	*
Unknown	*	*	*	*	*	*	*	*	*	*
Positive Destinations	76%	83%	79%	88%	87%	89%	92%	89%	93%	97%
Total	72	98	107	281	239	287	265	160	88	30
% of Total Leavers	4%	6%	7%	17%	15%	18%	16%	10%	5%	2%

Percentages based on 5 or less have been suppressed due to disclosure reasons.

- Across the SIMD areas the range entering positive destinations varies from **76%** in SIMD 1 to **97%** in SIMD 10. However, the majority of leavers reside in SIMD 4 to 8 where there is very little difference between the proportion of leavers entering positive destinations.
- Leavers who live in the least deprived area are more likely to enter higher education in comparison to leavers who live in all other areas. The proportion of leavers entering higher education from the least deprived area (**70%**) is approx three and a half times the proportion for leavers from the most deprived areas (**19%**). The proportion of leavers entering higher education rises as you move from the most deprived areas to the least deprived.
- The majority of leavers from all SIMD Decile areas enter higher or further education.
- The highest proportion of leavers unemployed seeking is in SIMD 1 and then decreases across the rest of the SIMD areas.
- There were **2** leavers whose SIMD area is unknown. Both entered positive destinations.

Skills Development Scotland Dumfries & Galloway Council School Leaver Destination Report 2009-10

Table 9: Destination by Stage Left School.

Stage of Leaving ⁱⁱⁱ Destination	Statutory Summer Leaver	Statutory Winter Leaver	Post Statutory Leaver
Higher Education	*	4%	47%
Further Education	52%	37%	20%
Training	9%	5%	1%
Employment	19%	24%	22%
Voluntary Work	*	*	1%
Unemployed Seeking	16%	27%	6%
Unemployed Not Seeking	2%	*	1%
Unknown	0%	3%	1%
Positive Destinations	81%	70%	92%
Total Leavers	246	188	1,195
% of Total Leavers	1%	4%	47%

- It can be noted that the highest proportion of school pupils choose to remain at school past their statutory leave date and this has an impact on their positive progression from school. Leavers who stay on past their statutory leave date are more likely to progress to positive outcomes on leaving school with the majority entering higher education.
- Statutory winter leavers are less likely to enter positive destinations and the highest proportion is reported as being in further education. Statutory winter leavers are around four times as likely to be reported as unemployed seeking than a post statutory leaver.
- The highest proportions of statutory summer leavers enter further education with employment being the 2nd highest proportion.

Section 2: Positive Destinations

Section 2.1 Higher and Further Education

Higher Education (HE): This category includes leavers following HND (Higher National Diploma) or HNC (Higher National Certificate) courses, degree courses, courses for the education and training of teachers and higher level courses for professional qualifications. **25** young people with a deferred, unconditional place in higher education for next year have also been included in this year's figures.

Further Education (FE): This category includes leavers undertaking non advanced further education which is not higher education.

From those reported in the SLDR, **574** leavers entered Higher Education and **433** entered Further Education. Detailed analysis can be provided on **99.2% (999)** of this cohort for whom we hold information on institution and course chosen – Higher Education **99.5% (571)** & Further Education **98.8% (428)**.

Table 10: HE Entrants by Institution Type

Institution Type	Total	%
University / HE College	407	71%
FE College	128	22%
Other ¹	36	6%

¹ Other Category includes institutions out with Scotland and other private institutions

Skills Development Scotland Dumfries & Galloway Council School Leaver Destination Report 2009-10

Table 11: HE Students by Institution

Institution ^{iv}	Total	%	Institution	Total	%
Glasgow University	79	14%	Dundee University	20	4%
West of Scotland University	49	9%	Aberdeen University	16	3%
Napier University	42	7%	Heriot Watt University	14	2%
Strathclyde University	40	7%	The Robert Gordon University	11	2%
Glasgow Caledonian University	32	6%	Scottish Agricultural College	8	1%
Stirling University	30	5%	Outwith Scotland	35	6%
Edinburgh University	29	5%	Other Institutions	15	3%
Abertay University Dundee	22	4%	FE Colleges	128	22%

Institutions with less than 5 leavers are included in "Other Institutions" in the table above.

Table 12: HE Students by FE Colleges

Institution	Total	%	Institution	Total	%
Dumfries and Galloway College	79	14%	Barony College	7	1%
Ayr College	9	2%	Other Institutions	33	6%

Institutions with less than 5 leavers are included in "Other Institutions" in the table above.

Table 13: FE Students by FE Colleges

Institution	Total	%	Institution	Total	%
Dumfries and Galloway College	308	72%	Ayr College	14	3%
Barony College	43	10%	Other Institutions	28	6%

Institutions with less than 5 leavers are included in "Other Institutions" in the table above.

It can be noted from tables 12 & 13 that the majority of leavers who continue their studies post school, chose to attend local institutions.

Table 14: Higher Education Course Information

Course Area	Total	%	Course Area	Total	%
Arts & Social Sciences	96	17%	Teaching	23	4%
Health & Medicine	65	11%	Administration & Management	19	3%
Science & Mathematics	59	10%	Animals, Land & Environment	19	3%
Art and Design	44	8%	Finance	13	2%
Engineering	38	7%	Hospitality, Catering & Tourism	11	2%
Computing & ICT	33	6%	Communications & Media	9	2%
Performing Arts	30	5%	Languages	9	2%
Construction	29	5%	Sales & Marketing	9	2%
Sport, Leisure & Sport Science	27	5%	Law	8	1%
Social, Caring & Advisory Services	26	5%	Other course areas	4	1%

Skills Development Scotland Dumfries & Galloway Council School Leaver Destination Report 2009-10

Table 15: Further Education Course Information

Course Area	Total	%	Course Area	Total	%
Hairdressing & Beauty	65	15%	Art and Design	17	4%
Social, Caring & Advisory Services	65	15%	Hospitality, Catering & Tourism	17	4%
Construction	58	14%	Administration & Management	15	4%
Animals, Land & Environment	37	9%	Personal Dev. & Prep Courses	12	3%
Engineering	31	7%	Computing & ICT	11	3%
Sport, Leisure & Sport Science	25	6%	Performing Arts	7	2%
Garage Services	20	5%	General Education (Highers, etc)	5	1%
Health & Medicine	20	5%	Other course areas	4	1%
Communications & Media	19	4%			

This is the 3rd year that SDS has gathered fuller data, across Scotland, about the course areas entered by school leavers. It shows that Arts & Social Science based subjects are the most popular for those entering higher education followed by Health & Medicine.

Within further education, leavers studying vocational subjects such as Hairdressing and Beauty, Social, Caring & Advisory Services and Construction are the most popular choices.

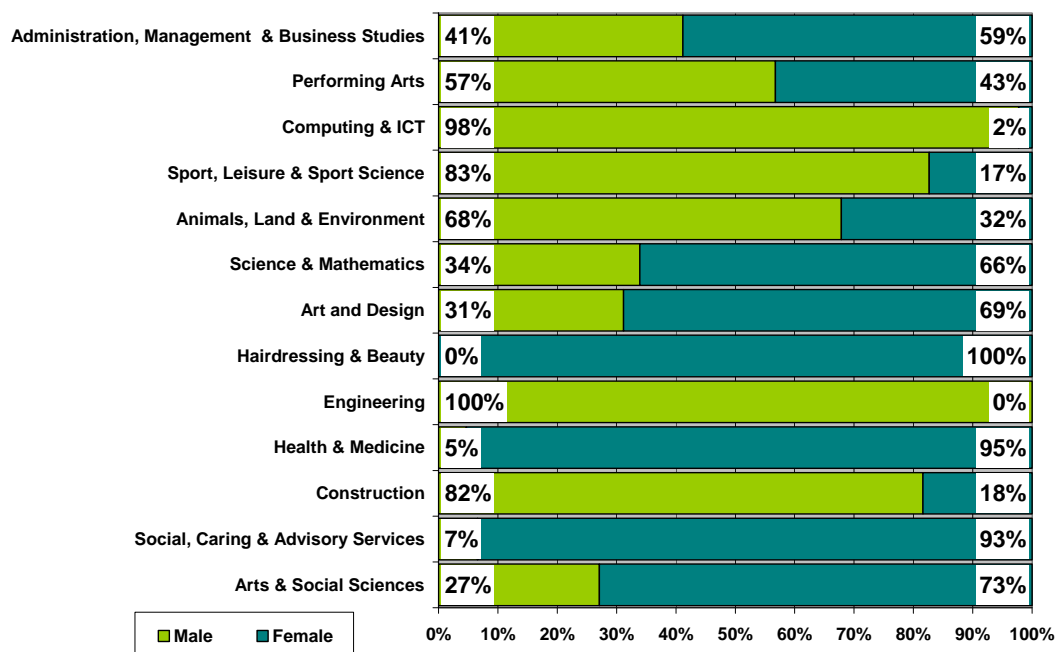
Table 16: Course Information by Gender

Course Area	Male		Female	
	Total	%	Total	%
Arts & Social Sciences	26	6%	70	13%
Social, Caring & Advisory Services	6	1%	85	15%
Construction	71	16%	16	3%
Health & Medicine	*	*	81	15%
Engineering	69	15%	*	*
Hairdressing & Beauty	*	*	66	12%
Art and Design	19	4%	42	8%
Science & Mathematics	20	4%	39	7%
Animals, Land & Environment	38	8%	18	3%
Sport, Leisure & Sport Science	43	10%	9	2%
Computing & ICT	43	10%	*	*
Performing Arts	21	5%	16	3%
Administration & Management	14	3%	20	4%
Communications & Media	12	3%	16	3%
Hospitality, Catering & Tourism	9	2%	19	3%
Teaching	*	*	21	4%
Garage Services	19	4%	*	*
Finance	13	3%	*	*
Personal Dev. & Prep Courses	7	2%	5	1%
Languages	*	*	5	1%
Law	*	*	9	2%
Sales & Marketing	*	*	5	1%
General Education (Highers, etc)	*	*	*	*
Libraries, Museums and Archaeology	*	*	*	*

Courses with less than 5 leavers have been suppressed

Skills Development Scotland Dumfries & Galloway Council School Leaver Destination Report 2009-10

Table 17: Gender split within the course areas in both FE/HE



There has been a slight change in comparison to last year with the top three course areas for male leavers being Engineering, Computing & ICT and Sport, Leisure & Sport Science. In comparison female leavers have opted to enter subjects in Arts & Social Sciences, Health & Medicine and Social, Caring & Advisory Services. The most popular area for all leavers is Arts & Social Sciences with the majority of entrants being female (**73%**). Subjects in Engineering and Construction remain male dominated while Social & Caring related courses are female dominated.

Skills Development Scotland Dumfries & Galloway Council School Leaver Destination Report 2009-10

Section 2.2: Employment

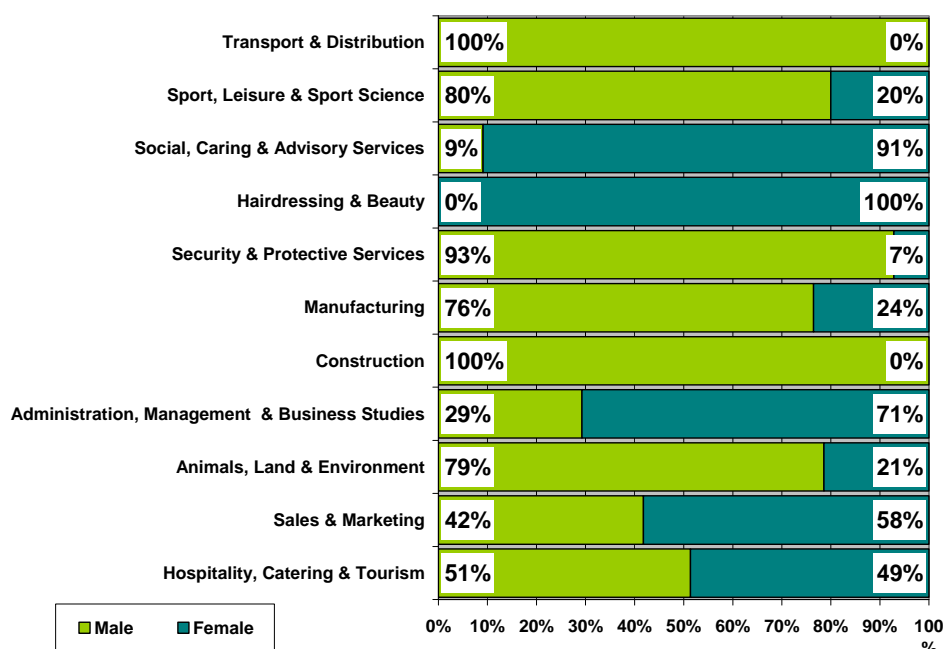
Employment: This category includes those who are employed and who are in receipt of payment from their employers. It includes young people undertaking training in employment through Skillseekers and Modern Apprenticeships. **361** young people entered Employment and analysis can be provided on **99% (359)** all of those entering employment for whom we hold information about the occupational area entered.

Table 18: Those entering Employment by Occupational Area

Occupational Area	Male		Female	
	Total	%	Total	%
Hospitality, Catering & Tourism	37	17%	35	24%
Sales & Marketing	28	13%	39	27%
Animals, Land & Environment	33	16%	9	6.1%
Administration & Management	12	6%	29	20%
Construction	33	16%	*	*
Manufacturing	13	6%	*	*
Security & Protective Services	13	6%	*	*
Hairdressing & Beauty	*	*	11	7%
Social, Caring & Advisory Services	*	*	10	7%
Sport, Leisure & Sport Science	8	4%	*	*
Transport & Distribution	10	5%	*	*
Engineering	9	4%	*	*
Garage Services	9	4%	*	*
Health & Medicine	*	*	*	*
Finance	*	*	*	*
Art and Design	*	*	*	*
Computing & ICT	*	*	*	*
Libraries, Museums and Archaeology	*	*	*	*
Performing Arts	*	*	*	*

Occupational areas with less than 5 leavers have been suppressed

Table 19: Gender split within the top employment areas



Skills Development Scotland Dumfries & Galloway Council School Leaver Destination Report 2009-10

The most popular area of employment entered by school leavers continues to be Hospitality, Catering & Tourism. This is also the most popular area for males with **17%** of male leavers gaining employment in this occupational area which is an increase of **4%** on last year's levels but over a third when based on actual numbers. The 3 most popular occupational areas with female leavers are Sales & Marketing, Hospitality, Catering & Tourism and Administration, Management & Business Studies with **71%** entering these areas.

All the leavers who enter the occupational areas of Construction and Transport & Distribution are male and Hairdressing & Beauty roles remain female dominated but over half of the leavers who find work in Hospitality, Catering & Tourism are male.

Section 3: Other Destinations

School leavers who do not achieve a positive destination on leaving school are known as the MCMC group and are key customers for Skills Development Scotland and our partner organisations. The SLDR is a snapshot in time and should only be used as an indicator.

Unemployed and seeking employment or training: This category includes those who are in contact with SDS and are known by them to be seeking employment or training. This is based on regular contact between SDS and the client. This does not refer to the definition of 'unemployed' used by the Benefits Agency to calculate published unemployment rates. In 2009-10 it also included those individuals undertaking personal skills development^v 7 or 4% of the unemployed seeking cohort

Unemployed and not seeking employment or training: This category includes all those individuals who are not seeking employment or training for a range of reasons. These individual circumstances may involve sickness, prison, pregnancy, caring for children or other dependents or taking time out.

Section 3.1 Unemployed Seeking

The table provides a comparison of the percentage of unemployed seeking clients with specific characteristics as opposed to the rate of the full SLDR cohort

Table 20: Client Characteristics

Characteristics	% of Full SLDR	% of Unemployed Seeking
Gender		
Male	50%	62%
Female	50%	38%
Stage Left School		
Statutory Summer Leaver	15%	25%
Statutory Winter Leaver	12%	31%
Post Statutory Leaver	73%	45%
Qualifications on Leaving School^{vi}		
Access 1 / No formal Qualifications	1%	2%
Access 2&3/Foundation Stand. Grade	3%	13%
General Standard Grade/ Intermediate1	16%	31%
Credit Standard Grade/ Intermediate 2	28%	29%
Highers/Advanced Higher	51%	23%
Unknown	1%	2%
Health And Additional Support Needs		
Looked After at Home/ Looked after away from home ^{vii}	4%	15%
Additional Support Plan Recorded ^{viii}	6%	7%
Health Factor/Additional Support Need Identified ^{ix}	10%	17%

Skills Development Scotland Dumfries & Galloway Council School Leaver Destination Report 2009-10

Table 20: Client Characteristics (cont)

Characteristics		% of Full SLDR	% of Unemployed Seeking
SIMD Decile Ranking /Deprivation (SIMD 2009)			
Most deprived	1	4%	10%
	2	6%	9%
	3	7%	12%
	4	17%	18%
	5	15%	17%
	6	18%	16%
	7	16%	8%
	8	10%	8%
	9	5%	2%
Least Deprived	10	2%	1%
	Unknown	0%	0%

- Although male leavers account for **50%** of the leaving cohort they account for **62%** of leavers reported as unemployed seeking.
- Statutory winter leavers represent only **12%** of the whole SLDR cohort but are disproportionately represented within the leavers reported as unemployed seeking at **31%**, as are statutory summer leavers who represent **15%** of the cohort and **25%** of unemployed seeking
- The largest proportion of unemployed seeking leavers have general level standard grades.
- Leavers who had a period of being looked after at home or away from home are also disproportionately represented within the leavers reported as unemployed seeking

Table 21: Leavers by Intermediate Data zone

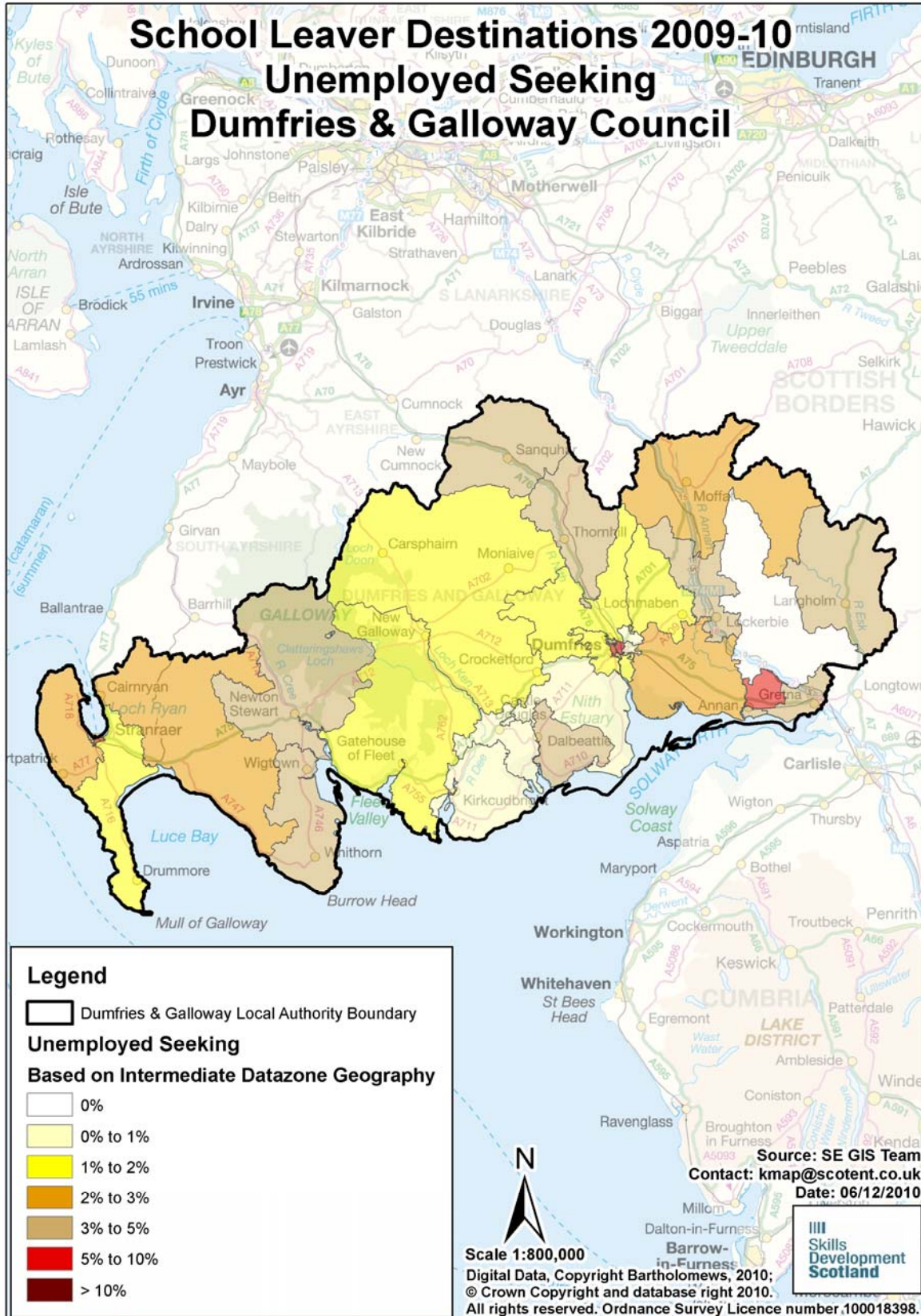
There were **163** leavers from Dumfries and Galloway schools who were reported as unemployed seeking in the SLDR. By using postcodes, we were able to identify areas within the authority where unemployed school leavers were living. However, at the snapshot, **3** of the leavers were living outside the local authority area but a further **4** unemployed seeking school leavers from other local authority schools were residing within the local authority boundaries. The analysis below is based on **164** leavers residing in the authority and who SDS held postcode information for. The table below shows the intermediate data zones with the highest percentage of unemployed leavers.

Intermediate Data zone ^x	Total	%	Intermediate Data zone	Total	%
Annan North	16	10%	Upper Nithsdale	8	5%
Nithside and Nunholm	9	5%	Langholm and Canonbie	7	4%
Stranraer Central	9	5%	Lockerbie and Mid Annandale	7	4%
Summerville	9	5%	Machars South	7	4%
Dalbeattie	8	5%	Annan South	6	4%
Lincluden and Lochside	8	5%	Mid Nithsdale	6	4%

Intermediate Data zone areas with less than 5 leavers have been suppressed

Table 22: Destinations of School Leavers: % Unemployed Seeking, 2009/10

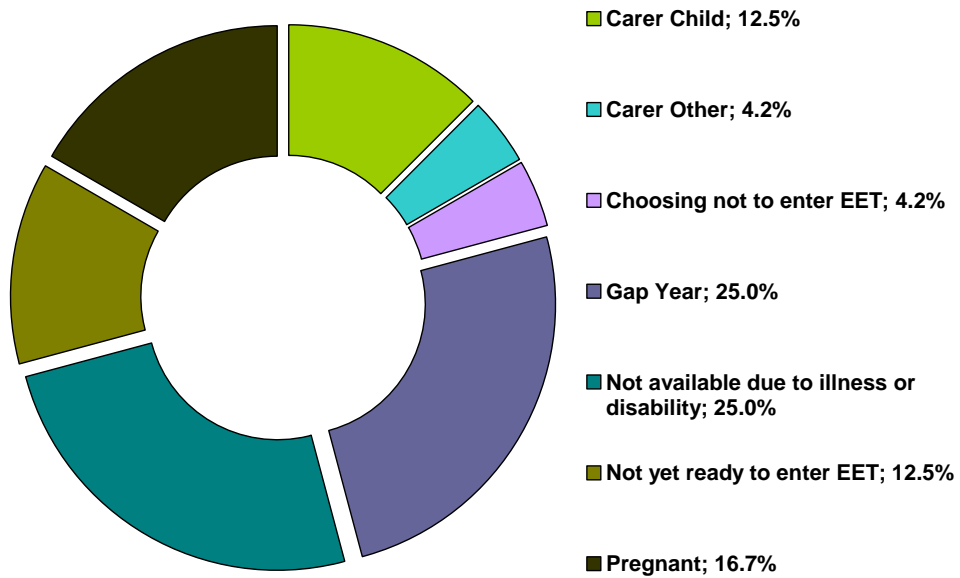
The map shows the intermediate data zones where the 164 leavers who were residing within the local authority boundary reside. Percentages have been calculated as a proportion of the number of leavers reported



Section 3.2 Unemployed NOT Seeking

There were **24** school leavers within this category.

Table 23: Individual Circumstances of those Unemployed NOT Seeking



Section 3.3 Unknown

There were **14** school leavers whose current destination was unknown at the time of SLDR.

Skills Development Scotland Dumfries & Galloway Council School Leaver Destination Report 2009-10

Table 24: Destinations by School, Percentage

School	Higher Education	Further Education	Training	Employment	Voluntary Work	Unemployed Seeking	Unemployed Not Seeking	Not Known	Total Leavers	% Pos	% Other
Annan Academy	25.6%	34.4%	1.1%	21.1%	1.1%	14.4%	1.7%	0.6%	180	83.3%	16.7%
Castle Douglas High School	44.7%	21.1%	2.4%	23.6%	0.8%	2.4%	2.4%	2.4%	123	92.7%	7.3%
Dalbeattie High School	42.6%	18.5%	0.0%	14.8%	0.0%	16.7%	3.7%	3.7%	54	75.9%	24.1%
Dalry Secondary School	16.7%	50.0%	0.0%	33.3%	0.0%	0.0%	0.0%	0.0%	6	100.0%	0.0%
Douglas Ewart High School	28.1%	28.1%	6.6%	23.1%	3.3%	9.9%	0.8%	0.0%	121	89.3%	10.7%
Dumfries Academy	40.6%	20.3%	0.8%	25.0%	0.0%	11.7%	1.6%	0.0%	128	86.7%	13.3%
Dumfries High School	34.7%	22.6%	2.6%	25.8%	2.1%	8.4%	1.6%	2.1%	190	87.9%	12.1%
Kirkcudbright Academy	53.2%	11.4%	1.3%	29.1%	0.0%	3.8%	1.3%	0.0%	79	94.9%	5.1%
Langholm Academy	35.4%	26.2%	1.5%	23.1%	0.0%	12.3%	1.5%	0.0%	65	86.2%	13.8%
Lockerbie Academy	33.3%	29.4%	0.8%	24.6%	0.8%	11.1%	0.0%	0.0%	126	88.9%	11.1%
Maxwelltown High School	12.5%	37.5%	14.6%	12.5%	0.0%	20.8%	0.0%	2.1%	48	77.1%	22.9%
Moffat Academy	46.5%	18.6%	2.3%	27.9%	0.0%	4.7%	0.0%	0.0%	43	95.3%	4.7%
Sanquhar Academy	26.3%	36.8%	1.8%	19.3%	0.0%	14.0%	1.8%	0.0%	57	84.2%	15.8%
St Joseph's College	43.7%	27.2%	1.0%	15.5%	0.0%	8.7%	2.9%	1.0%	103	87.4%	12.6%
Stranraer Academy	28.9%	34.1%	6.6%	18.5%	0.0%	10.9%	0.5%	0.5%	211	88.2%	11.8%
Wallace Hall Academy	45.3%	20.0%	2.1%	23.2%	0.0%	5.3%	3.2%	1.1%	95	90.5%	9.5%
Dumfries & Galloway Council	35.2%	26.6%	2.9%	22.2%	0.7%	10.0%	1.5%	0.9%	1,629	87.7%	12.3%

Background Notes:

- ⁱ **Positive Destinations:** includes higher education, further education, training, employment and voluntary work. See text above for explanation of each destination heading.
- ⁱⁱ **The Scottish Index of Multiple Deprivation (SIMD):** SIMD identifies small area concentrations of multiple deprivation across all of Scotland in a consistent way. SDS uses a file created by Scottish Neighbourhood Statistics to identify SIMD based on an individual leaver's postcode. The leaver's postcode is based on the last known address of the leaver as recorded on our client management system. Where there were gaps in the data held on our CMS, the last known address supplied in the annual import of pupil details has been used. As the last known postcode is used it may be that a leaver from one local authority was living in another local authority at the time of the return. Therefore, the SIMD relates to where a leaver was living and not the concentration of SIMD within a local authority.
- ⁱⁱⁱ **Stage of Leaving:** A **statutory summer leaver** is a school leaver who chooses to leave school at the earliest opportunity (31st May) when they become eligible to leave school i.e. their 16th birthday falls on or between 1st March and 30th September in their year of leaving. A **statutory winter leaver** is a school leaver who chooses to leave school at the earliest opportunity when they become eligible to leave school i.e. their 16th birthday falls between 1st October and the last day in February. A **post statutory leaver** is a school leaver who chose to remain at school past their statutory leave date e.g. a winter leaver who would have been eligible to leave at the winter leave date but choose to remain at school until the summer leave date. Included in this group are leavers who have past their statutory leave date and have left school at any stage throughout the year.
- ^{iv} **Institutions:** through our follow up of leavers, we confirm Further and Higher Education destinations and as part of the process we request further information about the institution a leaver is attending. This is not a requirement of the Scottish Government and the information displayed is based on the recorded detail on Insight, the SDS
- ^v **Personal Skills Development:** - Some leavers are not yet ready, or in a position to make an immediate transition to a formal positive destination. In such cases leavers may participate in learning opportunities / personal and social development activities with the aim of improving their confidence and employability. These programmes can be viewed as a stepping stone towards a more formal positive destination. They are often delivered by a community learning and development or third sector organisation and can include the activity agreement pilots. It was agreed, with the Scottish Government, that individuals undertaking these activities would be reported within the unemployed seeking SLDR category.
- ^{vi} **Qualifications on leaving school:** This information is based on pre-appeal information from the Scottish Qualifications Agency where SDS received information about a leaver's qualifications and a robust match of records was made. Where no match was made the qualification level has been gathered through our interaction with individuals.
- ^{vii} **Looked After at Home/ Looked after away from home:** This refers to recent school leavers that SDS has recorded information that they had an episode of being looked after at home or looked after away from home. This information is gathered in a variety of ways including local SDS contact with Social Work departments, data received through the school import process or via direct contact with individuals. It is recognised that this information may not be complete when compared with similar data from social work services departments. However SDS is working with the Scottish Government and local authorities to look at improving the sharing of information in respect of these young people therefore the figures used are indicative.
- ^{viii} **Additional Support Plan Recorded:** SDS receives data from all local authority schools and school centres with pupils in stages S1-S6 or special schools to import into our client management system. We receive information about those who have co-ordinated support plans (CSP) and individualised educational programmes. We also gather information directly from individuals and via our ongoing work with schools. We acknowledge that the data may vary from that held by local authorities therefore the figures used are indicative.
- ^{ix} **Health Factor/Additional Support Need Identified:** SDS receives data from all local authority schools and school centres with pupils in stages S1-S6 or special schools to import into our client management system. We receive information about those who have identified additional support needs. We also gather information directly from individuals and via our ongoing work with schools. We acknowledge that the data may vary from that held by local authorities therefore the figures used are indicative.
- ^x **Intermediate Data zone Geography:** The data zone is the key small area statistical geography in Scotland. The intermediate geography is built up from data zones and can be used to disseminate statistics that are not suitable for release at the data zone level. Due to the small number of individuals it has been decided to use the intermediate level geography. There are 1235 intermediate zones in Scotland, containing on average 4000 household residents and these have been designed to respect local authority boundaries as at 2001 Census.