

School Leaver Destination Report

2009 – 2010

City of Edinburgh Council

Contents

Section 1: Overview – Main Findings	3
Table 1: Destination Totals	4
Table 2: Local Authority Comparison to Scotland	4
Section 1.1 - Annual Trends	5
Table 3: Trends 2000 – 2010 of Positive Destinations	5
Table 4: Trends 2000 – 2010 of Other Destinations	5
Table 5: Destinations from 2000 to 2010	6
Section 1.2: Client Characteristics	6
Table 6: Destination split by Gender	6
Table 7: Gender split within each destination.....	7
Table 8: Destination by SIMD	7
Table 9: Destination by Stage Left School.	9
Section 2: Positive Destinations	9
Section 2.1 Higher and Further Education	9
Table 10: HE Entrants by Institution Type	9
Table 11: HE Students by Institution	10
Table 12: HE Students by FE Colleges	10
Table 13: FE Students by FE Colleges	10
Table 14: Higher Education Course Information	10
Table 15: Further Education Course Information	11
Table 16: Course Information by Gender	11
Table 17: Gender split within the course areas in both FE/HE	12
Section 2.2: Employment	13
Table 18: Those entering Employment by Occupational Area	13
Table 19: Gender split within the top employment areas	13
Section 3: Other Destinations	15
Section 3.1 Unemployed Seeking	15
Table 20: Client Characteristics	15
Table 21: Leavers by Intermediate Data zone	16
Table 22: Destinations of School Leavers: % Unemployed Seeking, 2009/10	17
Section 3.2 Unemployed NOT Seeking	17
Section 3.2 Unemployed NOT Seeking	18
Table 23: Individual Circumstances of those Unemployed NOT Seeking	18
Section 3.3 Unknown	18
Table 24: Destinations by School, Percentage	19
Background Notes:	20

Background

The School Leaver Destination Return (SLDR) is a statistical return undertaken by Skills Development Scotland (SDS) on behalf of the Scottish Government. The Return is based on a follow up of young people who left school between the 1st of August 2009 and the 31st of July 2010. This exercise was carried out during the month of September 2010.

The Scottish Government use the data produced from the Return to report against the National Indicator and target, "increase the proportion of school leavers (from Scottish publicly funded schools) in positive and sustained destinations (FE, HE, employment or training)". Partners, particularly Local Authorities, use the data to inform initiatives developed as part of the More Choices More Chances Strategy, to evidence the success of initiatives, measure progress against targets, and to identify areas to target resources to improve the post school outcomes for young people.

Methodology

The return is carried out during the month of September with staff across Skills Development Scotland following up over 55,000 school leavers. Destinations are confirmed throughout the follow up period and the destination that is reported is the destination that is known at the snapshot date. This year, we reported the information as known to us on 2nd October 2010. Destinations of young people are fluid in nature, therefore, it is possible that a leaver entered employment or training on leaving school but by the time the snapshot was taken this destination may have changed to another destination.

The information that is gathered is recorded within the SDS CMS system (Insight) which enables us to produce MIS reports and populate the data fields to be sent to the Government. This data is transferred at an individual level and undergoes a matching & validation process until a cohort is agreed. This allows the government's analytical services unit to match the client's individual outcome with other indicators such as social economic background, additional support needs and stage of leaving, etc. All information in this report, however, is based upon data held within the SDS Insight database which has been analysed to produce the graphs and tables contained within this report.

Analysis

Only leavers from publicly funded secondary schools are within the scope of the SLDR. This report relates to **3,411** leavers from publicly funded secondary schools. This relates to approximately a **-1%** reduction in the number of leavers reported in the SLDR in 2008-09.

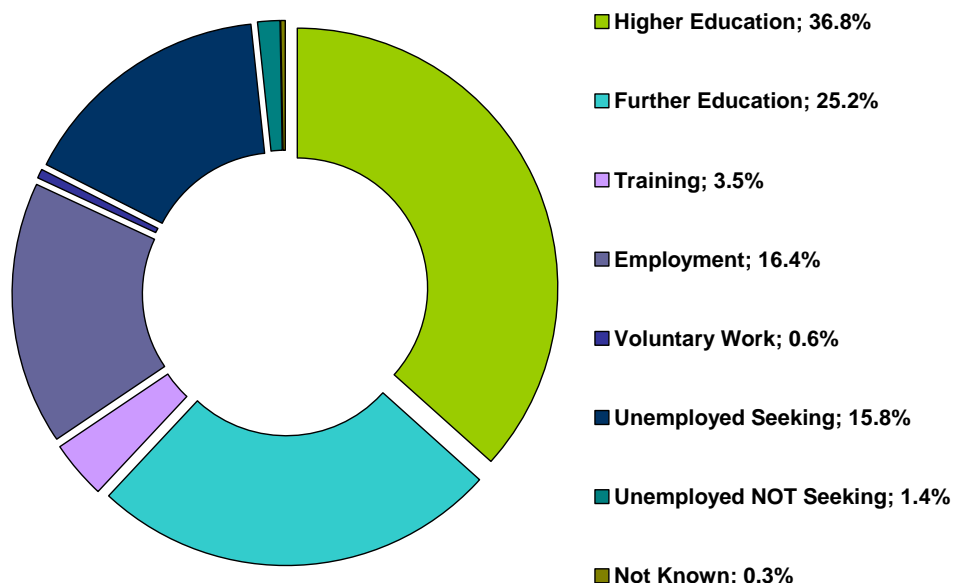
Section 1: Overview – Main Findings

- Overall the percentage of leavers entering a positive destinationⁱ is **82.5%**, a slight rise of **0.2%** on last year; however, this rise did not prevent the authority from having the lowest level of positive destinations in Scotland.
- In comparison to 2008-09, the percentage of leavers entering higher education has increased slightly to **36.8%**, a slight rise of **1.6%**. This rise has meant that the City of Edinburgh has the 12th highest level of leavers entering HE in Scotland.
- The percentage of leavers entering further education has remained static at **25.2%**, which is around **2%** lower than the national average and leaves the authority 20th out of 32.
- The percentage of leavers entering training has decreased slightly in 2009-10 to **3.5%**.
- The percentage of leavers entering employment has fallen from **17.9%** in 2008-09 to **16.4%**, which is also the lowest percentage recorded in a decade.

Skills Development Scotland City of Edinburgh Council - School Leaver Destination Report 2009-10

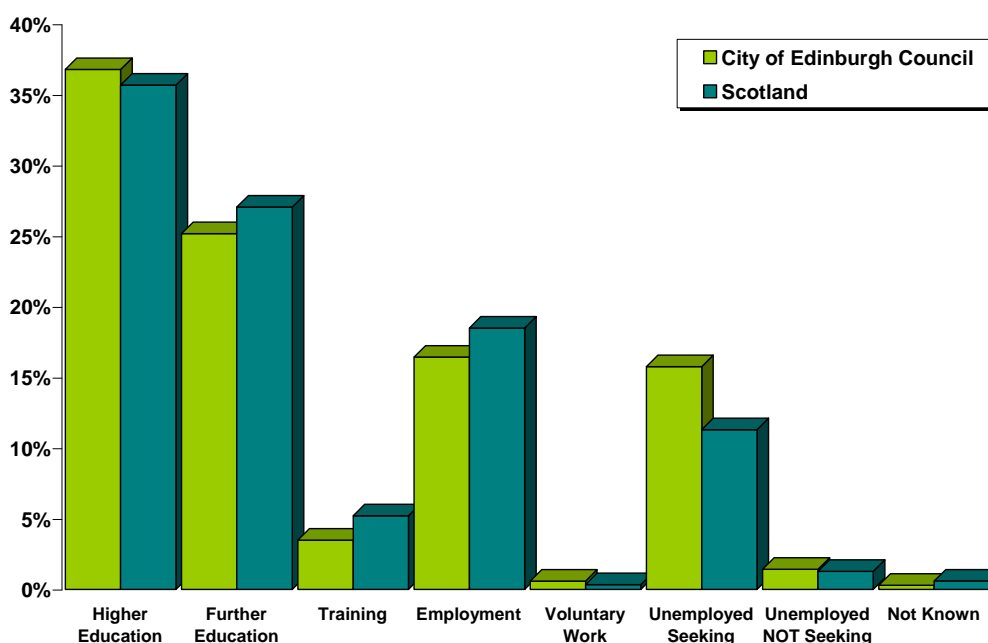
- The percentage of leavers who are unemployed seeking has increased to **15.8%**, **4.5%** higher than the national average and **0.3%** higher than last year. Therefore, Edinburgh has the highest percentage of leavers reported as unemployed seeking in the country.
- School leavers whose destination is unknown to SDS has fallen to its lowest recorded level at **0.3%**.

Table 1: Destination Totals



Area	Total Leavers	Higher Education	Further Education	Training	Employment	Voluntary Work	Unemployed Seeking	Unemployed NOT Seeking	Not Known
City of Edinburgh	3,411	36.8% 1,255	25.2% 859	3.5% 119	16.4% 561	0.6% 20	15.8% 538	1.4% 49	0.3% 10
Scotland	54,097	35.7% 19,309	27.1% 14,637	5.2% 2,822	18.5% 10,005	0.3% 187	11.3% 6,117	1.3% 696	0.6% 324

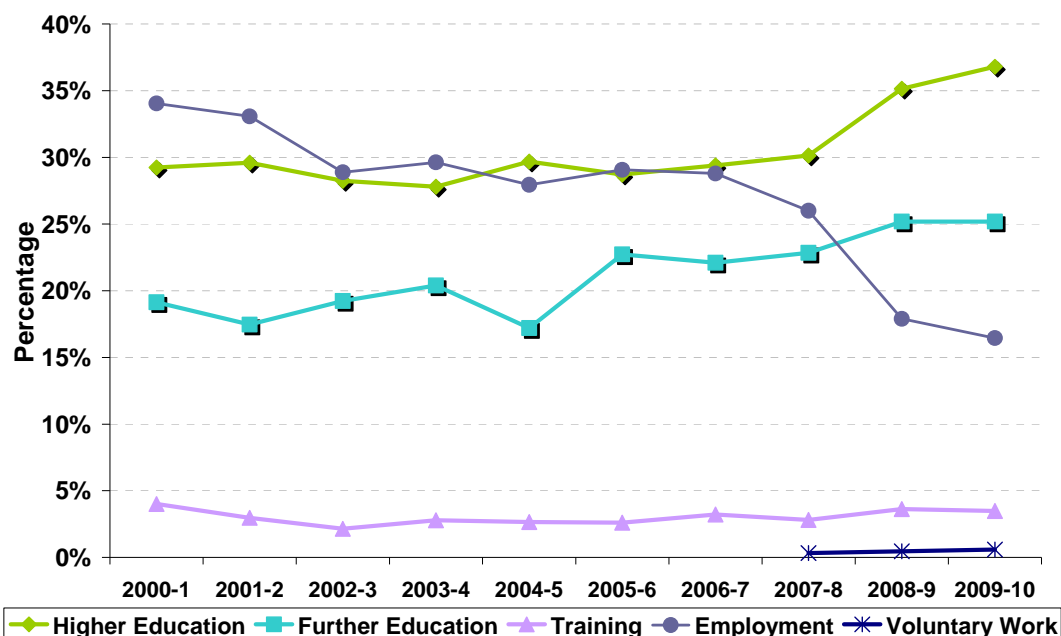
Table 2: Local Authority Comparison to Scotland



Skills Development Scotland
City of Edinburgh Council - School Leaver Destination Report 2009-10

Section 1.1 - Annual Trends

Table 3: Trends 2000 – 2010 of Positive Destinations

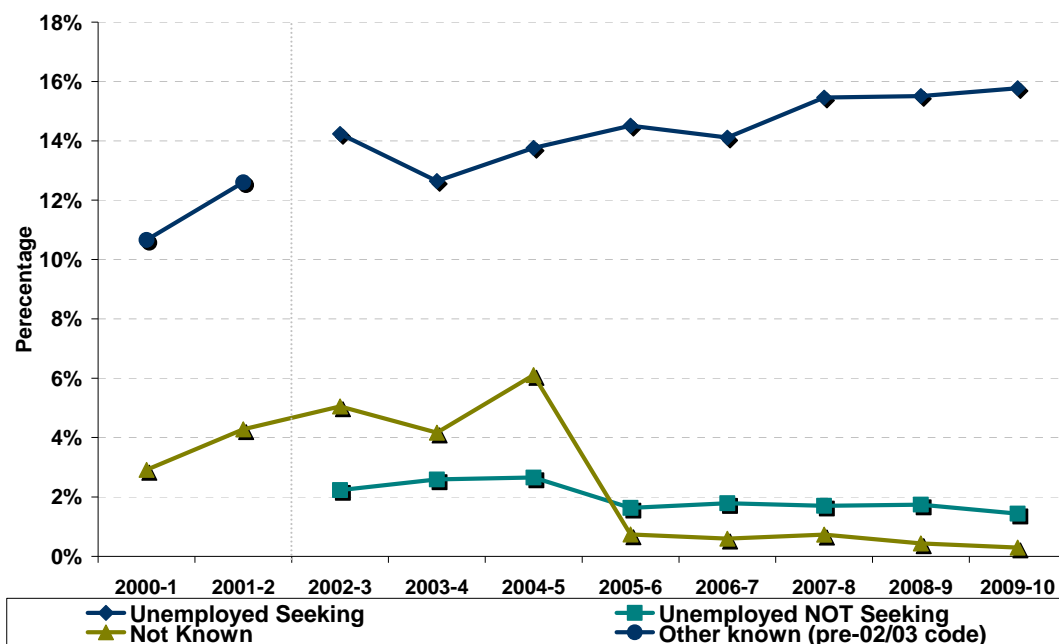


Note: Voluntary Work has been included as a separate destination category since the 2007- 08 SLDR return but was reported within the unemployed not seeking category previously.

From 2000-01 to 2007-08, the percentage of leavers entering higher education fluctuated around **30%**, by +/- 2%, however in 2008-09 there was a sharp rise to just over **35%**. This year the percentage rose again to the highest level in a decade to **36.8%**, **7.6%** higher than 10 years ago. Since 2006-07 the percentage of leavers entering further education had been rising and reached its highest level in a decade at **25.2%** last year but this year this remained static. Over the last decade the percentage of leavers entering training has never risen above **4%** and has fluctuated but is now **0.5%** lower than 10 years ago at **3.5%**. In 2000-1, the percentage of leavers in employment was **34%** and since then there has been a decline of **17.6%** to **16.4%**. The sharpest decline was between 2007-08 and 2008-09 when the percentage dropped by over **8%**.

Table 4: Trends 2000 – 2010 of Other Destinations

Skills Development Scotland
City of Edinburgh Council - School Leaver Destination Report 2009-10



In 2003-4 the percentage of leavers reported as unemployed seeking was **12.6%** but since then the percentage has, in general, been rising year on year and it now sits at the highest level in the last eight years at **15.8%**. For the last 5 years the percentage of leavers not known has been under **1%** and this has continued this year as it has fallen to the lowest level ever at **0.3%**.

Table 5: Destinations from 2000 to 2010

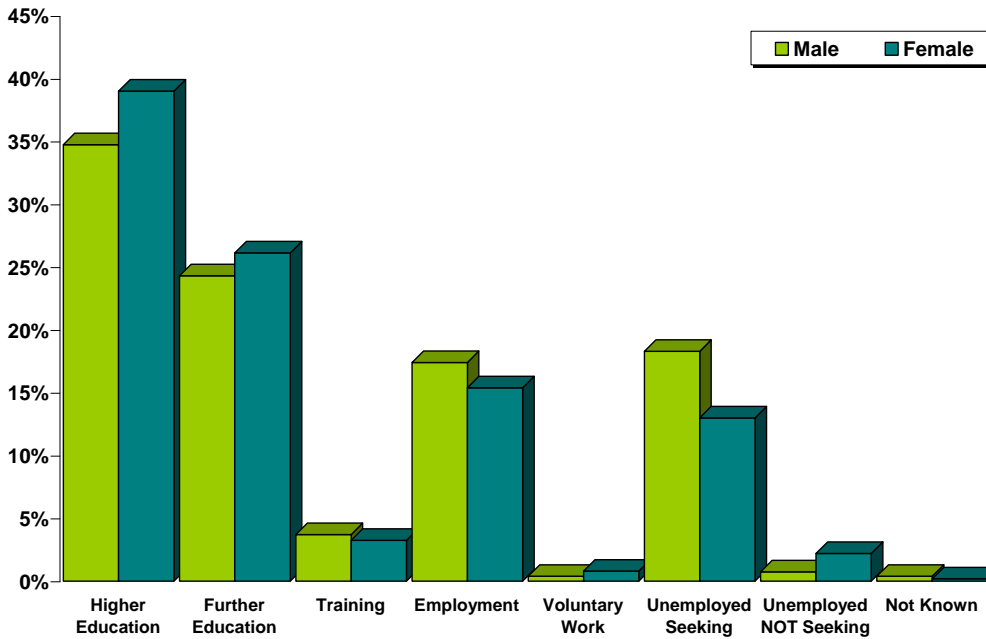
Year	Total Leavers	Higher Education	Further Education	Training	Employment	Voluntary Work	Unemployed Seeking	Unemployed NOT Seeking	Not Known	Other Known
2000-1	3,396	29.2%	19.1%	4.0%	34.0%				2.9%	10.7%
2001-2	3,459	29.6%	17.5%	3.0%	33.1%				4.3%	12.6%
2002-3	3,584	28.2%	19.2%	2.1%	28.9%		14.2%	2.2%	5.1%	
2003-4	3,551	27.8%	20.4%	2.8%	29.6%		12.6%	2.6%	4.2%	
2004-5	3,618	29.7%	17.2%	2.7%	27.9%		13.8%	2.7%	6.1%	
2005-6	3,674	28.7%	22.7%	2.6%	29.1%		14.5%	1.6%	0.7%	
2006-7	3,692	29.4%	22.1%	3.2%	28.8%		14.1%	1.8%	0.6%	
2007-8	3,700	30.1%	22.8%	2.8%	26.0%	0.3%	15.5%	1.7%	0.7%	
2008-9	3,443	35.1%	25.2%	3.6%	17.9%	0.5%	15.5%	1.7%	0.4%	
2009-10	3,411	36.8%	25.2%	3.5%	16.4%	0.6%	15.8%	1.4%	0.3%	

Note: Prior to 2002-03 both the unemployed seeking and unemployed not seeking categories were reported in a separate category called Other Known. This is reflected in the table and graph above.

Section 1.2: Client Characteristics

Table 6: Destination split by Gender

**Skills Development Scotland
City of Edinburgh Council - School Leaver Destination Report 2009-10**



Year	Total Leavers	Higher Education	Further Education	Training	Employment	Voluntary Work	Unemployed Seeking	Unemployed NOT Seeking	Not Known
Male	1,781	34.8%	24.3%	3.7%	17.4%	0.4%	18.3%	0.7%	0.4%
Female	1,630	39.0%	26.1%	3.3%	15.4%	0.8%	13.0%	2.2%	0.2%

Female leavers (**84.6%**) are more likely than male leavers (**80.6%**) to enter positive destinations on leaving school. The proportion of female leavers who continue their education in either higher or further education is **65.1%** compared to **59.1%** of males, a difference of **6 %**. The percentage of males entering employment and training (**21.1%**) is approx **2.5%** higher than that for females (**18.7%**). Males are more likely to become unemployed and seeking than females with around **61%** of leavers reported as unemployed seeking being male.

Table 7: Gender split within each destination

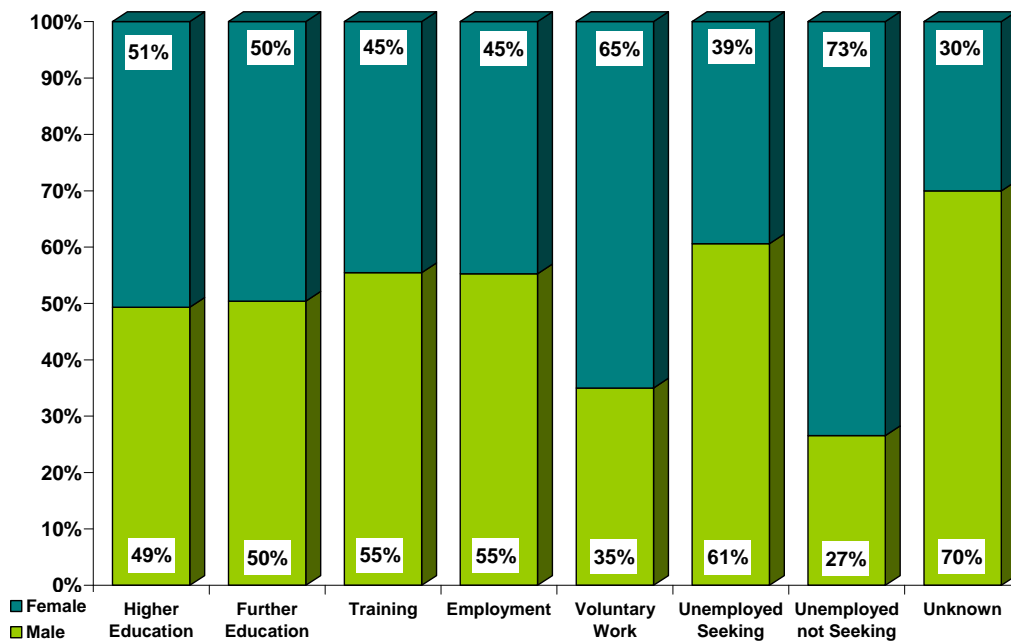


Table 8: Destination by SIMD

Skills Development Scotland
City of Edinburgh Council - School Leaver Destination Report 2009-10

SIMD Decile ⁱⁱⁱ	<i>Most Deprived</i> → <i>Least Deprived</i>										<i>Unknown</i>
	1	2	3	4	5	6	7	8	9	10	
Higher Education	10%	15%	23%	32%	30%	29%	34%	42%	44%	59%	*
Further Education	37%	33%	28%	24%	32%	25%	24%	27%	24%	16%	*
Training	6%	9%	4%	8%	2%	3%	5%	2%	1%	1%	*
Employment	14%	15%	16%	17%	21%	22%	21%	16%	18%	14%	*
Voluntary Work	*	*	*	*	*	*	*	*	*	1%	*
Unemployed Seeking	30%	23%	25%	15%	14%	19%	15%	10%	11%	8%	*
U/E Not Seeking	1%	2%	3%	*	*	*	*	2%	1%	1%	*
Unknown	*	*	*	*	*	*	*	*	*	*	*
Positive Destinations	68%	74%	72%	81%	85%	79%	84%	88%	87%	91%	100%
Total	416	254	294	177	224	223	184	306	417	915	1
% of Total Leavers	12%	7%	9%	5%	7%	7%	5%	9%	12%	27%	0%

Data & percentages based on less than 5 leavers are suppressed due to disclosure reasons. Totals may not equal 100% due to rounding.

- In general, leavers who live in the least deprived areas are more likely to enter positive destinations on leaving school than those from the most deprived area. For example, **91%** of those who live in SIMD 10 enter positive destinations whereas **68%** of those in SIMD 1 enter positive destinations.
- Leavers who live in the least deprived areas are more likely to enter Higher Education in comparison to leavers who live in the most deprived areas. The proportion leavers entering higher education from the least deprived area (**59%**) is nearly six times the proportion for leavers from the most deprived areas (**10%**). It is noticeable that in general terms the percentage of leavers entering higher education gradually rises with each SIMD decile.
- The highest proportion of leavers in SIMD 1, SIMD 2 & SIMD 3 entered further education. However leavers from these SIMD areas are also more likely to be unemployed than the leavers from the least deprived areas.

Skills Development Scotland
City of Edinburgh Council - School Leaver Destination Report 2009-10

Table 9: Destination by Stage Left School.

Stage of Leaving ⁱⁱⁱ Destination	Statutory Summer Leaver	Statutory Winter Leaver	Post Statutory Leaver
Higher Education	*	*	48%
Further Education	38%	25%	23%
Training	9%	7%	2%
Employment	17%	26%	15%
Voluntary Work	*	*	1%
Unemployed Seeking	34%	35%	10%
Unemployed Not Seeking	1%	4%	1%
Unknown	*	*	0%
Positive Destinations	64%	60%	89%
Total Leavers	520	306	2,585
% of Total Leavers	15%	9%	76%

Data & percentages based on less than 5 leavers are suppressed due to disclosure reasons. Totals may not equal 100% due to rounding.

- It can be noted that the majority of school pupils choose to remain at school past their statutory leave date (**76%**) and this has a positive impact on their positive progression from school. Leavers who stay on past their statutory leave date are more likely to progress to positive outcomes on leaving school (**89%**) with the highest proportion entering higher education (**48%**).
- By comparison, statutory winter leavers are least likely to enter positive destinations (**60%**) and the highest percentage became unemployed seeking (**35%**). They are however the leaver group with the highest percentage of leavers entering employment with **26%** doing so in comparison to **17%** for statutory summer leavers and **15%** for post statutory leavers.
- The highest percentage of statutory summer leavers have entered further education (**38%**). However, they are still 3 times more likely than a post statutory leaver to become unemployed.

Section 2: Positive Destinations

Section 2.1 Higher and Further Education

Higher Education (HE): This category includes leavers following HND (Higher National Diploma) or HNC (Higher National Certificate) courses, degree courses, courses for the education and training of teachers and higher level courses for professional qualifications. **72** young people with a deferred, unconditional place in higher education for next year have also been included in this year's figures.

Further Education (FE): This category includes leavers undertaking non advanced further education which is not higher education.

From those reported in the SLDR, **1,255** leavers entered Higher Education and **859** entered Further Education. Detailed analysis can be provided on **99.5% (2,104)** of this cohort for whom we hold information on institution and course chosen – Higher Education **99.7% (1,251)** & Further Education **99.3% (853)**.

Table 10: HE Entrants by Institution Type

Institution Type	Total	%
University / HE College	932	75%
FE College	252	20%
Other ¹	67	5%

¹ Other Category includes institutions out with Scotland and other private institutions

Skills Development Scotland
City of Edinburgh Council - School Leaver Destination Report 2009-10

Table 11: HE Students by Institution

Institution^{iv}	Total	%	Institution	Total	%
Edinburgh University	189	15%	The Robert Gordon University	32	3%
Napier University	147	12%	St Andrews University	22	2%
Glasgow University	116	9%	Glasgow Caledonian University	15	1%
Heriot Watt University	93	7%	Glasgow School of Art	8	1%
Aberdeen University	70	6%	West of Scotland University	6	0%
Stirling University	60	5%	Edinburgh College of Art	5	0%
Abertay University Dundee	40	3%	Scottish Agricultural College	5	0%
Dundee University	40	3%	Outwith Scotland	64	5%
Queen Margaret University	40	3%	Other Institutions	8	1%
Strathclyde University	39	3%	FE Colleges	252	20%

Institutions with less than 5 leavers are included in "Other Institutions" in the table above.

Table 12: HE Students by FE Colleges

Institution	Total	%	Institution	Total	%
Edinburgh's Telford College	104	8%	West Lothian College	6	0%
Stevenson College	70	6%	Other Institutions	14	1%
Jewel and Esk College	58	5%			

Institutions with less than 5 leavers are included in "Other Institutions" in the table above.

Table 13: FE Students by FE Colleges

Institution	Total	%	Institution	Total	%
Edinburgh's Telford College	440	52%	West Lothian College	12	1%
Stevenson College	228	27%	Oatridge College	8	1%
Jewel and Esk College	133	16%	Other Institutions	32	4%

Institutions with less than 5 leavers are included in "Other Institutions" in the table above.

Table 14: Higher Education Course Information

Course Area	Total	%	Course Area	Total	%
Arts & Social Sciences	279	22%	Art and Design	45	4%
Science & Mathematics	156	12%	Finance	39	3%
Administration & Management	94	8%	Construction	34	3%
Computing & ICT	93	7%	Languages	26	2%
Health & Medicine	82	7%	Teaching	26	2%
Sport, Leisure & Sport Science	75	6%	Communications & Media	24	2%
Engineering	63	5%	Social, Caring & Advisory Services	15	1%
Law	61	5%	Sales & Marketing	14	1%
Performing Arts	59	5%	Animals, Land & Environment	8	1%
Hospitality, Catering & Tourism	52	4%	Other Courses	6	0%

Skills Development Scotland
City of Edinburgh Council - School Leaver Destination Report 2009-10

Table 15: Further Education Course Information

Course Area	Total	%	Course Area	Total	%
Construction	129	15%	Computing & ICT	44	5%
General Education (Highers, etc)	110	13%	Personal Dev. & Prep Courses	41	5%
Art and Design	85	10%	Health & Medicine	30	4%
Social, Caring & Advisory Services	74	9%	Communications & Media	21	2%
Sport, Leisure & Sport Science	61	7%	Engineering	18	2%
Hospitality, Catering & Tourism	54	6%	Animals, Land & Environment	15	2%
Hairdressing & Beauty	48	6%	Garage Services	15	2%
Performing Arts	48	6%	Security & Protective Services	9	1%
Administration & Management	44	5%	Other Courses	7	1%

Data & percentages based on less than 5 leavers are suppressed due to disclosure reasons. Totals may not equal 100% due to rounding.

This is the 3rd year that SDS has gathered fuller data, across Scotland, about the course areas entered by school leavers. There has been no change to the 2 higher education course areas with the highest number of leavers from this year to last year – arts & social sciences and science and maths. The number of leavers who have entered arts & social science based courses has increased from **168** last year to **279** this year, around two thirds higher. There has been a slight decline in the number of leavers entering science & maths (**12**), this year to **156**. Other course areas in higher education that have witnessed a noticeable decline in entrants are art & design related courses down from **74** last year to **45** this, construction from **54** to **34** and teaching from **37** to **26**. The course areas witnessing a rise are admin, management and business related courses rising from **79** to **94** and hospitality, catering & tourism from **14** to **52**.

The four subject areas in further education with the highest number of leavers have not changed from last year to this year, however the order has. Construction has replaced general education courses such as higher grades as the area with the most leaver entrants. The number of leavers entering construction related courses in FE rose from **100** last year to **129** this. In comparison, general education courses witnessed a decline from **158** to **110**. Mirroring the situation within higher education leaver number who entered hospitality, catering and tourism courses have risen from **31** to **54**. Unlike higher education the number of entrants to FE based art & design courses have risen from **67** to **85**. The subject areas noticing a decline include performing arts from **67** last year to **48** this and hairdressing & beauty from **59** to **48**.

Table 16: Course Information by Gender

Course Area	Male		Female	
	Total	%	Total	%
Arts & Social Sciences	108	10%	173	16%
Construction	154	15%	9	1%
Science & Mathematics	81	8%	75	7%
Administration & Management	73	7%	65	6%
Computing & ICT	117	11%	20	2%
Sport, Leisure & Sport Science	107	10%	29	3%
Art and Design	41	4%	89	8%
Health & Medicine	19	2%	93	9%
General Education (Highers, etc)	49	5%	61	6%
Performing Arts	50	5%	57	5%
Hospitality, Catering & Tourism	31	3%	75	7%
Social, Caring & Advisory Services	13	1%	76	7%
Engineering	69	7%	12	1%
Law	26	2%	36	3%
Hairdressing & Beauty	*	*	49	5%
Communications & Media	29	3%	16	2%
Personal Dev. & Prep Courses	17	2%	24	2%

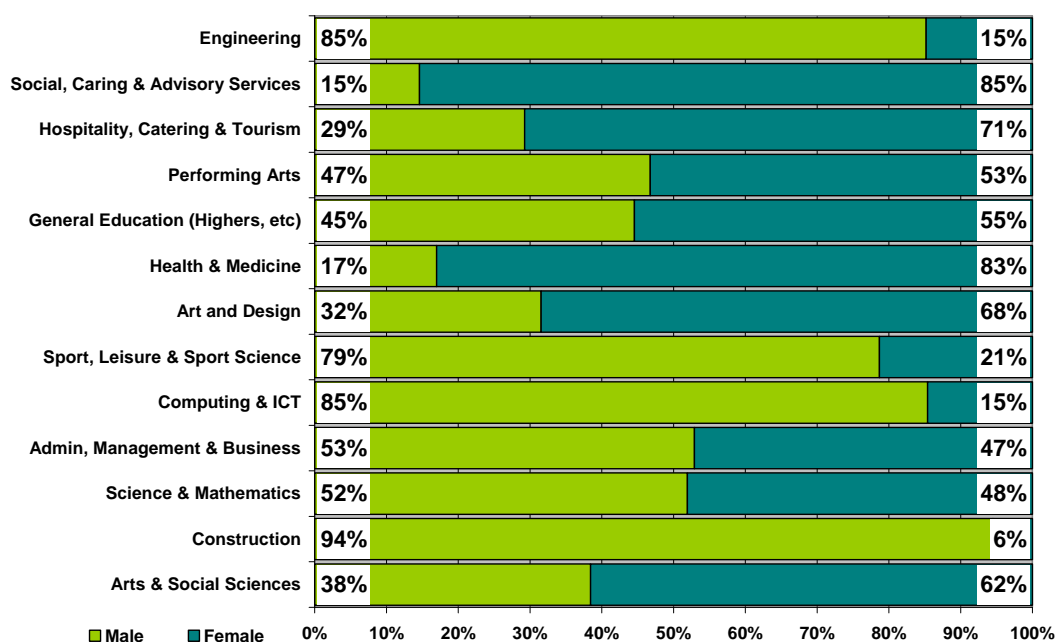
Skills Development Scotland
City of Edinburgh Council - School Leaver Destination Report 2009-10

Table 16: Course Information by Gender (cont)

Course Area	Male		Female	
	Total	%	Total	%
Finance	25	2%	16	2%
Languages	*	*	22	2%
Teaching	*	*	24	2%
Animals, Land & Environment	5	0%	18	2%
Sales & Marketing	5	0%	11	1%
Garage Services	11	1%	*	*
Security & Protective Services	7	1%	*	*

Data & percentages based on less than 5 leavers are suppressed due to disclosure reasons. Totals may not equal 100% due to rounding.

Table 17: Gender split within the course areas in both FE/HE



There has been no change in comparison to last year in relation to the two subject areas with highest number of male leavers. Construction has witnessed an increase of **10** from **144** to **154** and computing related courses have also risen slightly. The largest increase has been witnessed in the number of male leavers entering arts and social science based subjects which have increased from **51** to **108**.

Similar to the situation for male leavers the number of female leavers entering arts & social science based courses has also increased substantially from **118** to **173**. The subject area that had the 2nd highest number of female leavers last year was social/caring related courses but this is now the 4th highest after witnessing a drop of **19** from **95** to **76**. Health and medicine has witnessed a rise of **15** from **78** to **95**. The most significant rise, however, has been reserved for the number of female leavers entering hospitality, catering & tourism related course areas which have risen from **19** to **75**. Courses related to events management have contributed to this increase as it should be noted that these were classified under the sales and marketing heading, last year.

The most popular area for all leavers is arts and social sciences with the majority of entrants being female (**62%**). Subjects in construction and engineering remain male dominated and social/caring related courses remain female dominated.

Skills Development Scotland
City of Edinburgh Council - School Leaver Destination Report 2009-10

Section 2.2: Employment

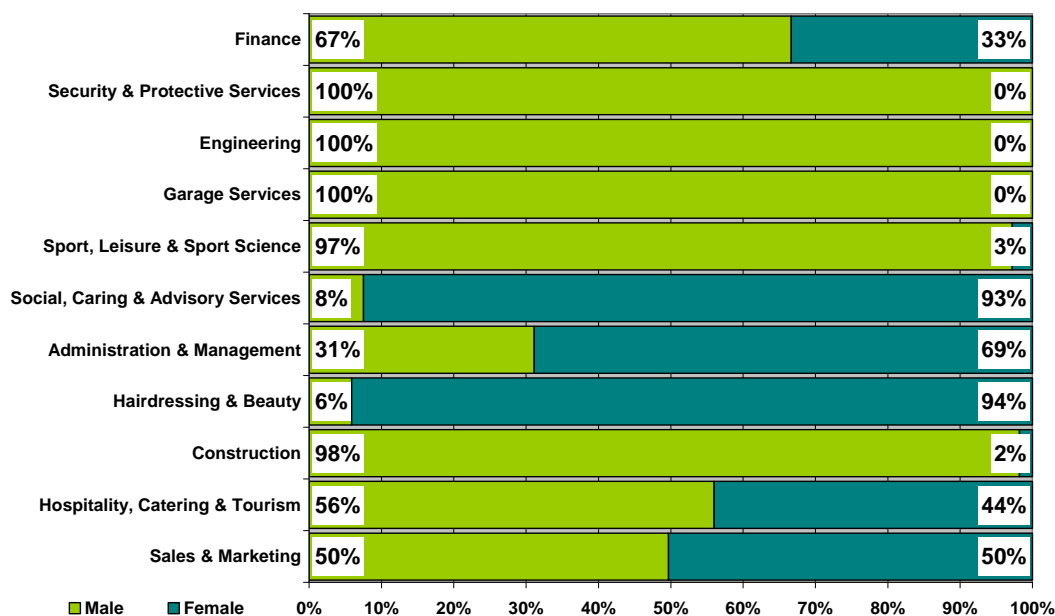
Employment: This category includes those who are employed and who are in receipt of payment from their employers. It includes young people undertaking training in employment through Skillseekers and Modern Apprenticeships. **561** young people entered Employment and analysis can be provided on **99.6% (559)** of those entering employment for whom we hold information about the occupational area entered.

Table 18: Those entering Employment by Occupational Area

Occupational Area	Male		Female	
	Total	%	Total	%
Sales & Marketing	76	25%	77	31%
Hospitality, Catering & Tourism	56	18%	44	18%
Construction	55	18%	*	*
Hairdressing & Beauty	*	*	48	19%
Administration & Management	14	5%	31	12%
Social, Caring & Advisory Services	*	*	37	15%
Sport, Leisure & Sport Science	35	11%	*	*
Garage Services	17	6%	*	*
Engineering	11	4%	*	*
Security & Protective Services	11	4%	*	*
Finance	6	2%	*	*
Health & Medicine	*	*	6	2%
Animals, Land & Environment	5	2%	*	*
Transport & Distribution	7	2%	*	*
Other Occupational Areas	8	3%	*	*

Data & percentages based on less than 5 leavers are suppressed due to disclosure reasons. Totals may not equal 100% due to rounding.

Table 19: Gender split within the top employment areas



The most popular area of employment entered by all school leavers continues to be sales related jobs including retail and this occupational area has a 50/50 gender split and accounts for around 27% of all leavers entering employment on leaving school. The actual number of leavers who have entered this occupational area has reduced by **41** from **194** to **153**. The occupational area with the second highest number of leavers is hospitality, catering and tourism which is the same as last year and there has been no real change to the number of leavers entering this area of work.

Skills Development Scotland
City of Edinburgh Council - School Leaver Destination Report 2009-10

The highest 2 areas for males are the aforementioned occupational areas and construction is now the 3rd highest. This occupational area has witnessed a reduction from **65** to **55** since 2008-09. In comparison, sport & leisure occupations have seen an increase from **14** to **35**, in the same period.

There has been no change to the highest five occupational areas for female leavers but the number of female leavers entering the highest 4 have all fallen this year. As outlined above the substantial fall has been in sales related roles but the numbers entering hairdressing have also fallen from 57 to 48.

There is still a gender bias in the occupational areas of construction; garage services, engineering and the armed forces (security and protective) with the majority of entrants being male whereas hairdressing and social caring roles remain female dominated.

Section 3: Other Destinations

School leavers who do not achieve a positive destination on leaving school are known as the MCMC group and are key customers for Skills Development Scotland and our partner organisations. The SLDR is a snapshot in time and should only be used as an indicator.

Unemployed and seeking employment or training: This category includes those who are in contact with SDS and are known by them to be seeking employment or training. This is based on regular contact between SDS and the client. This does not refer to the definition of 'unemployed' used by the Benefits Agency to calculate published unemployment rates. In 2009-10 it also included those individuals undertaking personal skills development^v. There were **20** leavers who were in this status which equates to **4%** of the unemployed seeking cohort.

Unemployed and not seeking employment or training: This category includes all those individuals who are not seeking employment or training for a range of reasons. These individual circumstances may involve sickness, prison, pregnancy, caring for children or other dependents or taking time out.

Section 3.1 Unemployed Seeking

The table provides a comparison of the percentage of unemployed seeking clients with specific characteristics as opposed to the rate of the full SLDR cohort

Table 20: Client Characteristics

Characteristics	% of Full SLDR	% of Unemployed Seeking
Gender		
Male	52%	61%
Female	48%	39%
Stage Left School		
Statutory Summer Leaver	15%	33%
Statutory Winter Leaver	9%	20%
Post Statutory Leaver	76%	47%
Qualifications on Leaving School^{vi}		
Access 1 / No formal Qualifications	1%	2%
Access 2&3/Foundation Stand. Grade	3%	10%
General Standard Grade/ Intermediate1	16%	33%
Credit Standard Grade/ Intermediate 2	25%	28%
Highers/Advanced Higher	52%	20%
Unknown	3%	7%
Health And Additional Support Needs^{vii}		
Looked After at Home/ Looked after away from home ^{viii}	3%	10%
Additional Support Plan Recorded ^{ix}	3%	6%
Health Factor/Additional Support Need Identified ^x	7%	15%

Skills Development Scotland
City of Edinburgh Council - School Leaver Destination Report 2009-10

Table 20: Client Characteristics (cont)

Characteristics		% of Full SLDR	% of Unemployed Seeking
SIMD Decile Ranking /Deprivation (SIMD 2009)			
Most deprived	1	12%	23%
	2	7%	11%
	3	9%	14%
	4	5%	5%
	5	7%	6%
	6	7%	8%
	7	5%	5%
	8	9%	6%
	9	12%	9%
Least Deprived	10	27%	14%

Data & percentages based on less than 5 leavers are suppressed due to disclosure reasons. Totals may not equal 100% due to rounding.

- Although male leavers account for **52%** of the leaving cohort they account for almost **61%** of leavers reported as unemployed seeking
- Statutory winter leavers represent only **9%** of the whole SLDR cohort but are disproportionately represented within the leavers reported as unemployed seeking at **20%**. A similar situation is evident for statutory summer leavers with **15%** and **33%** respectively.
- The largest proportion of unemployed seeking leavers have general level standard grades (**33%**) and those with this level or below are disproportionately represented in the unemployed seeking cohort. They are **19%** of the SLDR cohort but are **45%** of the unemployed seeking cohort..
- Leavers who had a period of being looked after at home or away from home are also disproportionately represented within the leavers reported as unemployed seeking as they represent **3%** of the total cohort but account **10%** of the unemployed seeking cohort.
- Likewise having an additional support plan or additional support needs is also an indicator that you may be disproportionately represented in the unemployed seeking cohort

Table 21: Leavers by Intermediate Data zone

There were **538** leavers from City of Edinburgh secondary schools who were reported as unemployed seeking in the SLDR. By using postcodes, we were able to identify areas within the authority where unemployed school leavers were living. However, at the snapshot, **19** of the leavers were living outside the local authority area but a further **17** unemployed seeking school leavers from other local authority schools were residing within Insert LA boundaries. The analysis below is based on **536** leavers residing in the authority and who SDS held postcode information for. The table below shows the intermediate data zones with the highest percentage of unemployed leavers.

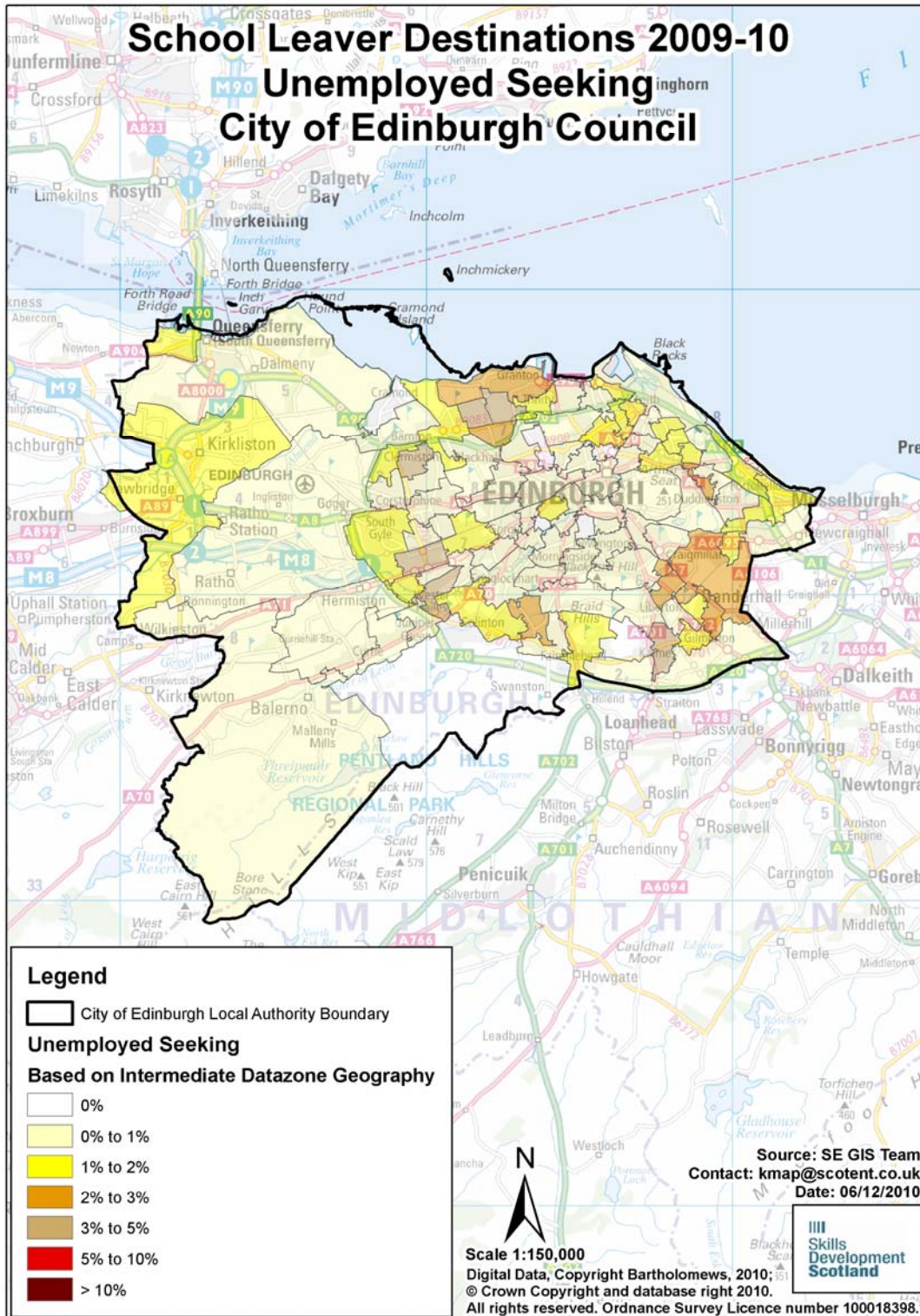
Intermediate Data zone ^{xi}	%	Total	Intermediate Data zone	%	Total
Clovenstone and Drumbryden	4%	24	Greendykes & Niddrie Mains	2%	13
Gracemount, Southouse and Burdiehouse	4%	20	Oxgangs and Firrhill	2%	13
Muirhouse	4%	19	Northfield	2%	12
West Pilton	3%	18	The Inch	2%	12
Broomhouse and Sighthill	3%	17	Waterfront and Granton	2%	12
Clermiston	3%	17	Drylaw	2%	11

Skills Development Scotland
City of Edinburgh Council - School Leaver Destination Report 2009-10

Data & percentages based on less than 5 leavers are suppressed due to disclosure reasons. Totals may not equal 100% due to rounding.

Table 22: Destinations of School Leavers: % Unemployed Seeking, 2009/10

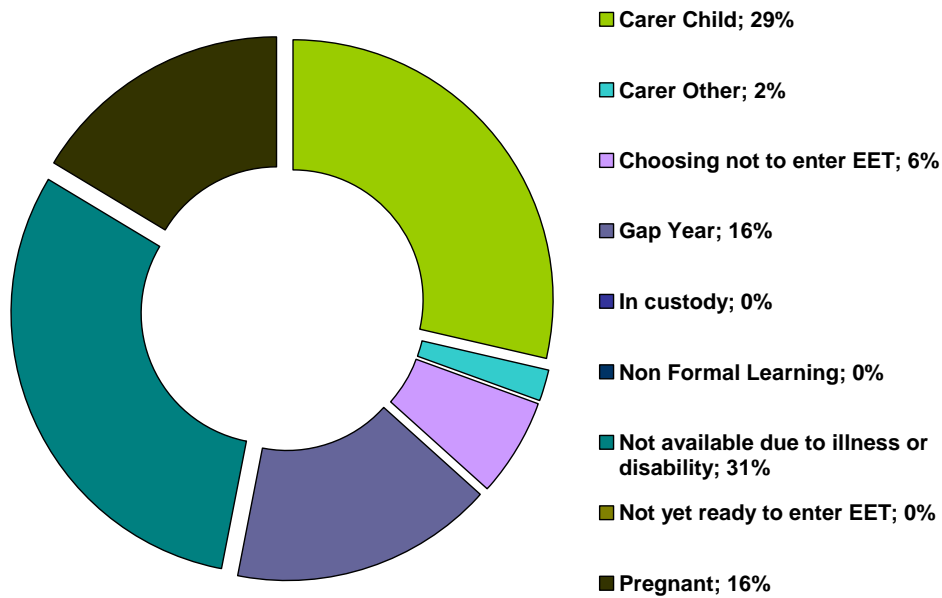
The map shows the intermediate data zones where the **536** leavers who were residing within the local authority boundary reside. Percentages have been calculated as a proportion of the number of leavers reported.



Section 3.2 Unemployed NOT Seeking

There were **49** school leavers within this category. The highest proportion of leavers reported as economically inactive are those who were not available due to illness (31%). Those leavers who were either pregnant or had caring responsibilities for a child represent 45% of the unemployed seeking cohort.

Table 23: Individual Circumstances of those Unemployed NOT Seeking



Section 3.3 Unknown

There were **10** school leavers whose destination was unknown at the time of SLDR.

Skills Development Scotland
City of Edinburgh Council - School Leaver Destination Report 2009-10

Table 24: Destinations by School, Percentage

School	Higher Education	Further Education	Training	Employment	Voluntary Work	Unemployed Seeking	Unemployed Not Seeking	Not Known	Total Leavers	% Pos	% Other
Balerno Community High School	46.4%	33.6%	0.8%	11.2%	0.0%	6.4%	1.6%	0.0%	125	92.0%	8.0%
Boroughmuir High School	56.3%	16.7%	1.1%	9.2%	1.1%	12.6%	2.9%	0.0%	174	84.5%	15.5%
Broughton High School	30.5%	26.8%	6.1%	10.4%	1.2%	21.3%	3.0%	0.6%	164	75.0%	25.0%
Castlebrae Community High School	8.6%	41.4%	6.9%	12.1%	0.0%	25.9%	5.2%	0.0%	58	69.0%	31.0%
Craigmount High School	45.2%	20.1%	2.9%	18.8%	0.0%	10.9%	2.1%	0.0%	239	87.0%	13.0%
Craigroyston Community High School	8.0%	43.2%	8.0%	8.0%	0.0%	30.7%	2.3%	0.0%	88	67.0%	33.0%
Currie Community High School	49.1%	15.3%	1.8%	20.2%	0.0%	11.7%	0.0%	1.8%	163	86.5%	13.5%
Drummond Community High School	17.2%	31.0%	4.6%	13.8%	0.0%	28.7%	3.4%	1.1%	87	66.7%	33.3%
Firrhill High School	49.5%	19.4%	1.5%	17.0%	1.0%	11.7%	0.0%	0.0%	206	88.3%	11.7%
Forrester High School	23.2%	30.3%	0.0%	20.2%	0.0%	25.3%	1.0%	0.0%	99	73.7%	26.3%
Gracemount High School	25.4%	34.2%	5.3%	18.4%	0.0%	15.8%	0.9%	0.0%	114	83.3%	16.7%
Holy Rood RC High School	24.9%	28.4%	4.5%	20.9%	0.0%	19.9%	1.0%	0.5%	201	78.6%	21.4%
James Gillespie's High School	57.6%	15.8%	1.1%	14.1%	1.6%	8.2%	1.6%	0.0%	184	90.2%	9.8%
Leith Academy	24.6%	29.1%	10.3%	12.0%	0.6%	21.1%	1.1%	1.1%	175	76.6%	23.4%
Liberton High School	29.5%	20.2%	3.9%	21.7%	0.8%	20.9%	3.1%	0.0%	129	76.0%	24.0%
Portobello High School	38.1%	27.1%	2.0%	20.6%	1.2%	10.5%	0.0%	0.4%	247	89.1%	10.9%
Queensferry Community High School	41.9%	29.5%	1.6%	14.0%	0.0%	13.2%	0.0%	0.0%	129	86.8%	13.2%
St Augustine's High School	30.5%	31.2%	5.0%	17.0%	0.0%	14.9%	1.4%	0.0%	141	83.7%	16.3%
St Thomas Of Aquin's High School	55.6%	14.5%	0.8%	12.9%	0.8%	14.5%	0.8%	0.0%	124	84.7%	15.3%
The Royal High School	46.8%	20.2%	2.5%	19.7%	1.5%	8.9%	0.5%	0.0%	203	90.6%	9.4%
Trinity Academy	31.6%	25.7%	1.8%	22.8%	1.2%	15.8%	0.6%	0.6%	171	83.0%	17.0%
Tynecastle High School	25.2%	26.2%	7.5%	17.8%	0.0%	22.4%	0.9%	0.0%	107	76.6%	23.4%
Wester Hailes Education Centre	8.4%	36.1%	8.4%	12.0%	0.0%	28.9%	6.0%	0.0%	83	65.1%	34.9%
City of Edinburgh Council	36.8%	25.2%	3.5%	16.4%	0.6%	15.8%	1.4%	0.3%	3,411	82.5%	17.5%

Background Notes:

- ⁱ **Positive Destinations:** includes higher education, further education, training, employment and voluntary work. See text above for explanation of each destination heading.
- ⁱⁱ **The Scottish Index of Multiple Deprivation (SIMD):** SIMD identifies small area concentrations of multiple deprivation across all of Scotland in a consistent way. SDS uses a file created by Scottish Neighbourhood Statistics to identify SIMD based on an individual leaver's postcode. The leaver's postcode is based on the last known address of the leaver as recorded on our client management system. Where there were gaps in the data held on our CMS, the last known address supplied in the annual import of pupil details has been used. As the last known postcode is used it may be that a leaver from one local authority was living in another local authority at the time of the return. Therefore, the SIMD relates to where a leaver was living and not the concentration of SIMD within a local authority.
- ⁱⁱⁱ **Stage of Leaving:** A **statutory summer leaver** is a school leaver who chooses to leave school at the earliest opportunity (31st May) when they become eligible to leave school i.e. their 16th birthday falls on or between 1st March and 30th September in their year of leaving. A **statutory winter leaver** is a school leaver who chooses to leave school at the earliest opportunity when they become eligible to leave school i.e. their 16th birthday falls between 1st October and the last day in February. A **post statutory leaver** is a school leaver who chose to remain at school past their statutory leave date e.g. a winter leaver who would have been eligible to leave at the winter leave date but choose to remain at school until the summer leave date. Included in this group are leavers who have past their statutory leave date and have left school at any stage throughout the year.
- ^{iv} **Institutions:** through our follow up of leavers, we confirm Further and Higher Education destinations and as part of the process we request further information about the institution a leaver is attending. This is not a requirement of the Scottish Government and the information displayed is based on the recorded detail on Insight.
- ^v **Personal Skills Development:** - Some leavers are not yet ready, or in a position to make an immediate transition to a formal positive destination. In such cases leavers may participate in learning opportunities / personal and social development activities with the aim of improving their confidence and employability. These programmes can be viewed as a stepping stone towards a more formal positive destination. They are often delivered by a community learning and development or third sector organisation and can include the activity agreement pilots. It was agreed, with the Scottish Government, that individuals undertaking these activities would be reported within the unemployed seeking SLDR category.
- ^{vi} **Qualifications on leaving school:** This information is based on pre-appeal information from the Scottish Qualifications Agency where SDS received information about a leaver's qualifications and a robust match of records was made. Where no match was made the qualification level has been gathered through our interaction with individuals.
- ^{vii} **Qualifications on leaving school:** This information is based on pre-appeal information from the Scottish Qualifications Agency where SDS received information about a leaver's qualifications and a robust match of records was made. Where no match was made the qualification level has been gathered through our interaction with individuals.
- ^{viii} **Looked After at Home/ Looked after away from home:** This refers to recent school leavers that SDS has recorded information that they had an episode of being looked after at home or looked after away from home. This information is gathered in a variety of ways including local SDS contact with Social Work departments, data received through the school import process or via direct contact with individuals. It is recognised that this information may not be complete when compared with similar data from social work services departments. However SDS is working with the Scottish Government and local authorities to look at improving the sharing of information in respect of these young people therefore the figures used are indicative.
- ^{ix} **Additional Support Plan Recorded:** SDS receives data from all local authority schools and school centres with pupils in stages S1-S6 or special schools to import into our client management system. We receive information about those who have co-ordinated support plans (CSP) and individualised educational programmes. We also gather information directly from individuals and via our ongoing work with schools. We acknowledge that the data may vary from that held by local authorities therefore the figures used are indicative.
- ^x **Health Factor/Additional Support Need Identified:** SDS receives data from all local authority schools and school centres with pupils in stages S1-S6 or special schools to import into our client management system. We receive information about those who have identified additional support needs. We also gather information directly from individuals and via our ongoing work with schools. We acknowledge that the data may vary from that held by local authorities therefore the figures used are indicative.

^{xi}**Intermediate Data zone Geography:** The data zone is the key small area statistical geography in Scotland. The intermediate geography is built up from data zones and can be used to disseminate statistics that are not suitable for release at the data zone level. Due to the small number of individuals it has been decided to use the intermediate level geography. There are 1235 intermediate zones in Scotland, containing on average 4000 household residents and these have been designed to respect local authority boundaries as at 2001 Census.