

School Leaver Destination Report

2009 – 2010

Aberdeenshire Council

Contents

Section 1: Overview – Main Findings	3
Table 1: Destination Totals.....	4
Table 2: Local Authority Comparison to Scotland.....	4
Section 1.1 - Annual Trends	4
Table 3: Trends 2000 – 2010 of Positive Destinations.....	4
Table 4: Trends 2000 – 2010 of Other Destinations.....	5
Table 5: Destinations from 2000 to 2010.....	6
Section 1.2: Client Characteristics	6
Table 6: Destination split by Gender.....	6
Table 7: Gender split within each destination.....	7
Table 8: Destination by SIMD.....	7
Table 9: Destination by Stage Left School.	8
Section 2: Positive Destinations	8
Section 2.1 Higher and Further Education	8
Table 10: HE Entrants by Institution Type.....	8
Table 11: HE Students by Institution.....	9
Table 12: HE Students by FE Colleges	9
Table 13: FE Students by FE Colleges.....	9
Table 14: Higher Education Course Information.....	9
Table 15: Further Education Course Information	9
Courses with less than 5 leavers have been suppressed	10
Table 17: Gender split within the course areas in both FE/HE.....	11
Section 2.2: Employment	12
Table 18: Those entering Employment by Occupational Area.....	12
*Occupational areas with less than 5 leavers have been suppressed	12
Table 19: Gender split within the top employment areas	12
Section 3: Other Destinations	14
Section 3.1 Unemployed Seeking	14
Table 20: Client Characteristics.....	14
Table 21: Leavers by Intermediate Data zone	15
Table 22: Destinations of School Leavers: % Unemployed Seeking, 2009/10.....	16
Section 3.2 Unemployed NOT Seeking	16
Section 3.2 Unemployed NOT Seeking	17
Table 23: Individual Circumstances of those Unemployed NOT Seeking.....	17
Section 3.3 Unknown	17
Table 24: Destinations by School, Percentage	18
Background Notes:	19

Background

The School Leaver Destination Return (SLDR) is a statistical return undertaken by Skills Development Scotland (SDS) on behalf of the Scottish Government. The Return is based on a follow up of young people who left school between the 1st August 2009 and the 31st July 2010. This exercise was carried out during the month of September 2010.

The Scottish Government use the data produced from the Return to report against the National Indicator and target, "increase the proportion of school leavers (from Scottish publicly funded schools) in positive and sustained destinations (FE, HE, employment or training)". Partners, particularly Local Authorities, use the data to inform initiatives developed as part of the More Choices More Chances Strategy, to evidence the success of initiatives, measure progress against targets, and to identify areas to target resources to improve the post school outcomes for young people.

Methodology

The return is carried out during the month of September with staff across Skills Development Scotland following up over 55,000 school leavers. Destinations are confirmed throughout the follow up period and the destination that is reported is the destination that is known at the snapshot date. This year, we reported the information as known to us on 2nd October 2010. Destinations of young people are fluid in nature, therefore, it is possible that a leaver entered employment or training on leaving school but by the time the snapshot was taken this destination may have changed to another destination.

The information that is gathered is recorded within the SDS CMS system (Insight) which enables us to produce MIS reports and populate the data fields to be sent to the Government. This data is transferred at an individual level and undergoes a matching & validation process until a cohort is agreed. This allows the government's analytical services unit to match the client's individual outcome with other indicators such as social economic background, additional support needs and stage of leaving, etc. All information in this report, however, is based upon data held within the SDS Insight database which has been analysed to produce the graphs and tables contained within this report.

Analysis

Only leavers from publicly funded secondary schools are within the scope of the SLDR. This report relates to **2,745** leavers from publicly funded secondary schools. This relates to approximately a **1%** increase in the number of leavers reported in the SLDR in 2008-09.

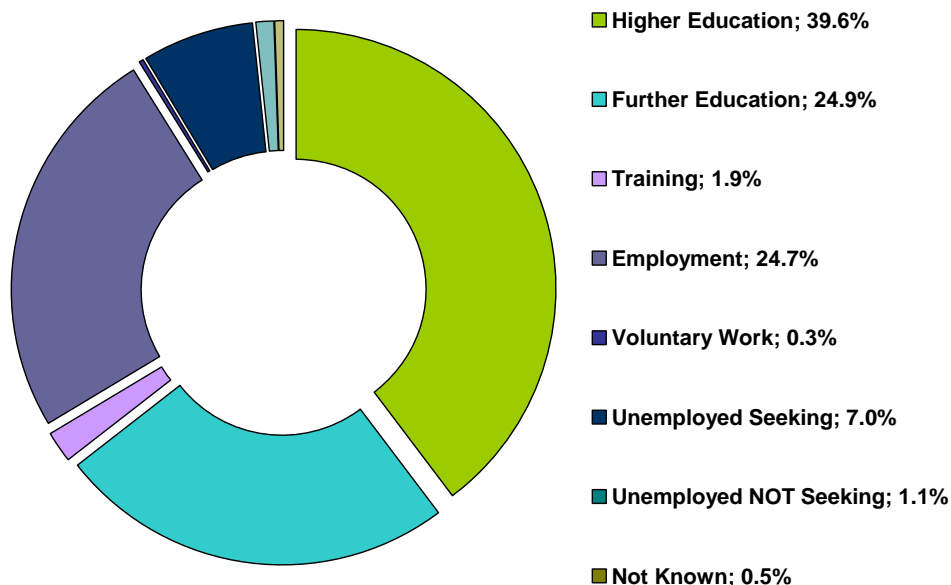
Section 1: Overview – Main Findings

- Overall the percentage of leavers entering a positive destinationⁱ is **91.4%**, a rise of **1.3%** on last year. This rise was the fifteen highest in Scotland, but the authority sustains its position as the 5th highest in Scotland
- The proportion of leavers entering further and higher education is lower when compared to 2008-09, changing to **64.5%**. The percentage of leavers entering higher education has increased by **0.2%** in comparison to last year to **39.6%** above the Scottish average of **35.7%**. This has resulted in the authority moving from the 5th highest level of leavers entering higher education in Scotland to 4th.
- The percentage of leavers entering further education is lower when compared to last year, changing to **24.9%** which is **2%** lower than the Scottish average.
- The percentage of leavers entering employment has increased since last year, changing from **22.2%** to **24.7%**. The percentage entering training has increased by **0.6%** from last year to **1.9%**.

Skills Development Scotland Aberdeenshire Council School Leaver Destination Report 2009-10

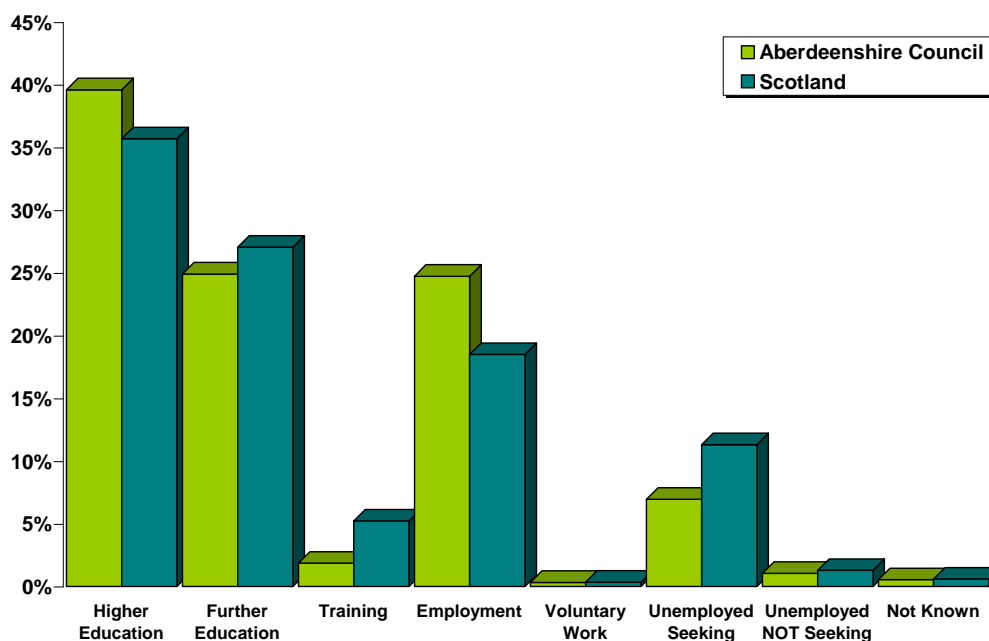
- The percentage of leavers who are unemployed seeking has decreased to **7%** from **7.5%**.
- School leaver's whose destination is unknown to SDS has fallen to **0.5%**.

Table 1: Destination Totals



Area	Total Leavers	Higher Education	Further Education	Training	Employment	Voluntary Work	Unemployed Seeking	Unemployed NOT Seeking	Not Known
Aberdeenshire	2,745	39.6% 1,087	24.9% 684	1.9% 51	24.7% 679	0.3% 9	7.0% 191	1.1% 29	0.5% 15
Scotland	54,097	35.7% 19,309	27.1% 14,637	5.2% 2,822	18.5% 10,005	0.3% 187	11.3% 6,117	1.3% 696	0.6% 324

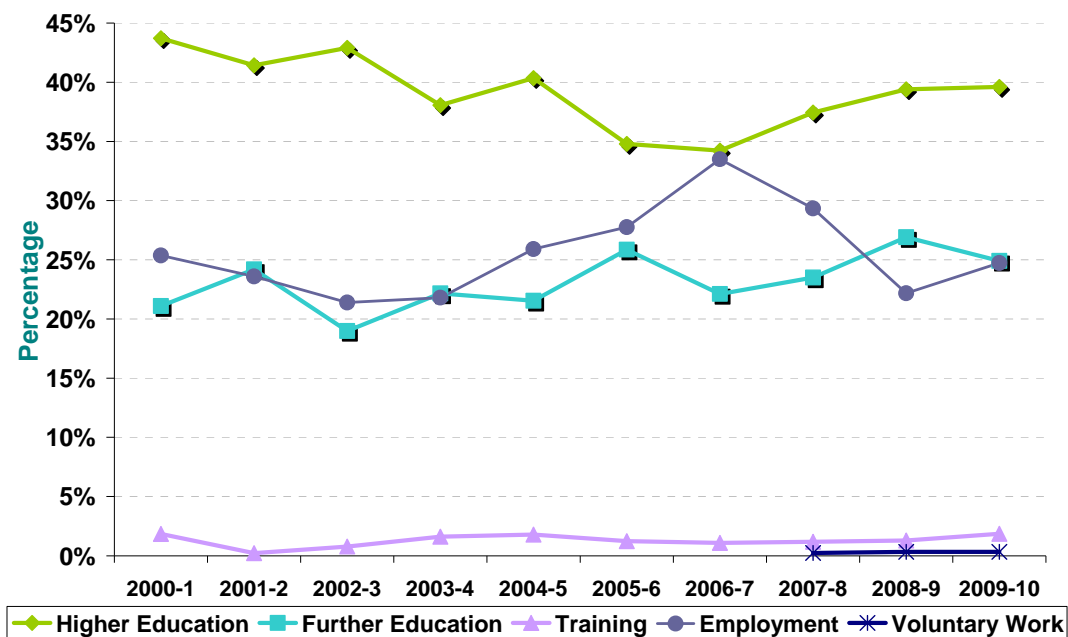
Table 2: Local Authority Comparison to Scotland



Section 1.1 - Annual Trends

Table 3: Trends 2000 – 2010 of Positive Destinations

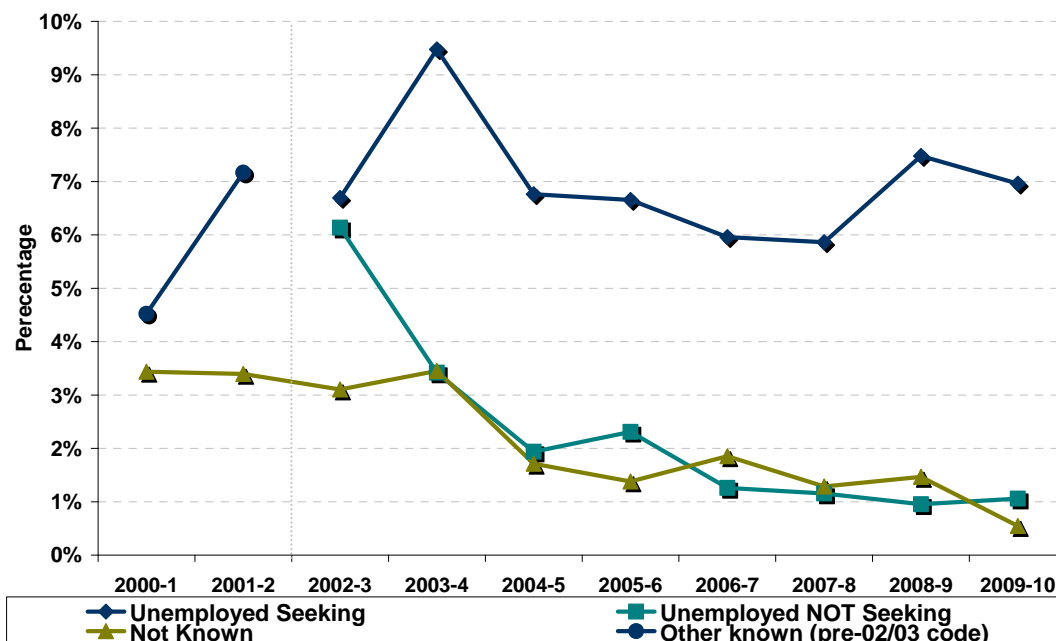
Skills Development Scotland Aberdeenshire Council School Leaver Destination Report 2009-10



Note: Voluntary Work has been included as a separate destination category since the 2007-08 SLDR return but was reported within the unemployed not seeking category previously.

Since falling to its lowest level in 2006-07, the percentage of leavers entering Higher Education has risen year on year and is now similar to 2004-05 levels. The proportion of leavers entering further education has also been rising year on year since 2006-07 with the exception of 2009-10. During 2009-10 there was a drop of **-2%**. In comparison, there has been a dramatic fall in the percentage of leavers entering employment since 2006-07 from **33.5%** to **24.7%**.

Table 4: Trends 2000 – 2010 of Other Destinations



The proportion of leavers reported as unemployed seeking dropped dramatically in 2004-5 but rose in 2008-09 to **7.5%**. This has now reduced to **7.0%**. The percentage of leavers unknown had fallen from a high of **3.4%** in 2000-01 to the lowest level ever at **0.5%** in 2009-10.

Skills Development Scotland Aberdeenshire Council School Leaver Destination Report 2009-10

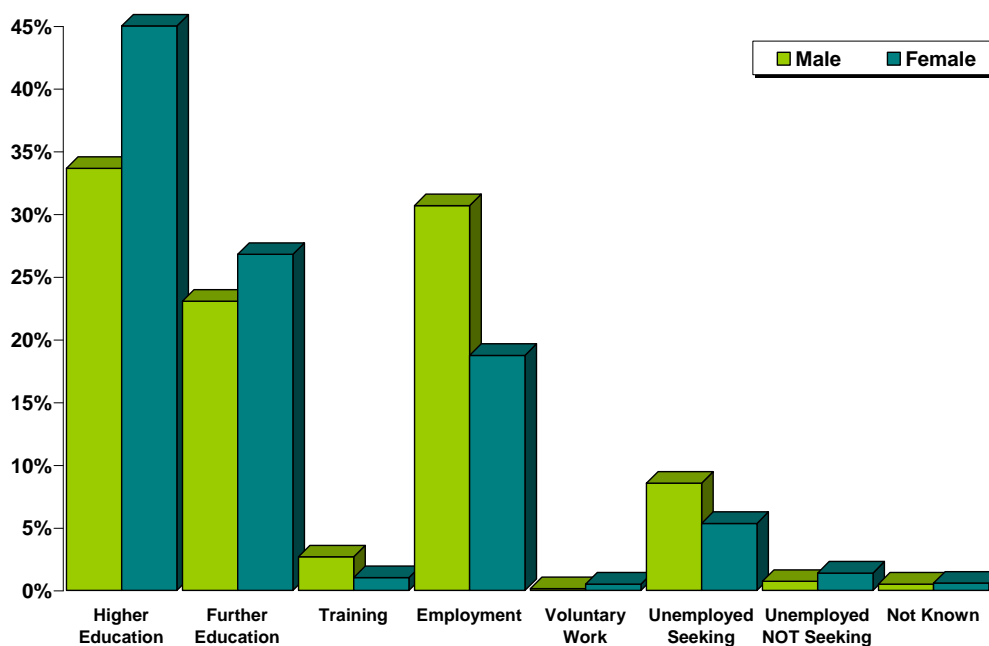
Table 5: Destinations from 2000 to 2010

Year	Total Leavers	Higher Education	Further Education	Training	Employment	Voluntary Work	Unemployed Seeking	Unemployed NOT Seeking	Not Known	Other Known
2000-1	2,853	43.7%	21.1%	1.9%	25.4%				3.4%	4.5%
2001-2	2,679	41.4%	24.2%	0.2%	23.6%				3.4%	7.2%
2002-3	2,674	42.9%	19.0%	0.8%	21.4%		6.7%	6.1%	3.1%	
2003-4	2,838	38.1%	22.2%	1.6%	21.8%		9.5%	3.4%	3.5%	
2004-5	2,632	40.3%	21.5%	1.8%	25.9%		6.8%	1.9%	1.7%	
2005-6	2,900	34.8%	25.9%	1.2%	27.8%		6.7%	2.3%	1.4%	
2006-7	3,021	34.2%	22.1%	1.1%	33.5%		6.0%	1.3%	1.9%	
2007-8	2,952	37.4%	23.5%	1.2%	29.3%	0.2%	5.9%	1.2%	1.3%	
2008-9	2,728	39.4%	26.9%	1.3%	22.2%	0.3%	7.5%	1.0%	1.5%	
2009-10	2,745	39.6%	24.9%	1.9%	24.7%	0.3%	7.0%	1.1%	0.5%	

Note: Prior to 2002-03 both the unemployed seeking and unemployed not seeking categories were reported in a separate category called Other Known. This is reflected in the table and graph above.

Section 1.2: Client Characteristics

Table 6: Destination split by Gender



Gender	Total Leavers	Higher Education	Further Education	Training	Employment	Voluntary Work	Unemployed Seeking	Unemployed NOT Seeking	Not Known
Male	1,379	33.6%	23.1%	2.7%	30.7%	0.1%	8.6%	0.7%	0.5%
Female	1,366	45.6%	26.8%	1.0%	18.7%	0.5%	5.3%	1.4%	0.6%

Female leavers (**92.7%**) are more likely than male leavers (**90.2%**) to enter positive destinations on leaving school. The proportion of female leavers who continue their education in either higher or further education is **15.7%** higher than that for males, **72.4%** compared to **56.7%**. The percentage of males entering employment and training (**33.4%**) is **13.6%** higher than that for females (**19.8%**). Males are more likely to become unemployed and seeking than females with **62%** of leavers reported as unemployed seeking being male.

Skills Development Scotland Aberdeenshire Council School Leaver Destination Report 2009-10

Table 7: Gender split within each destination

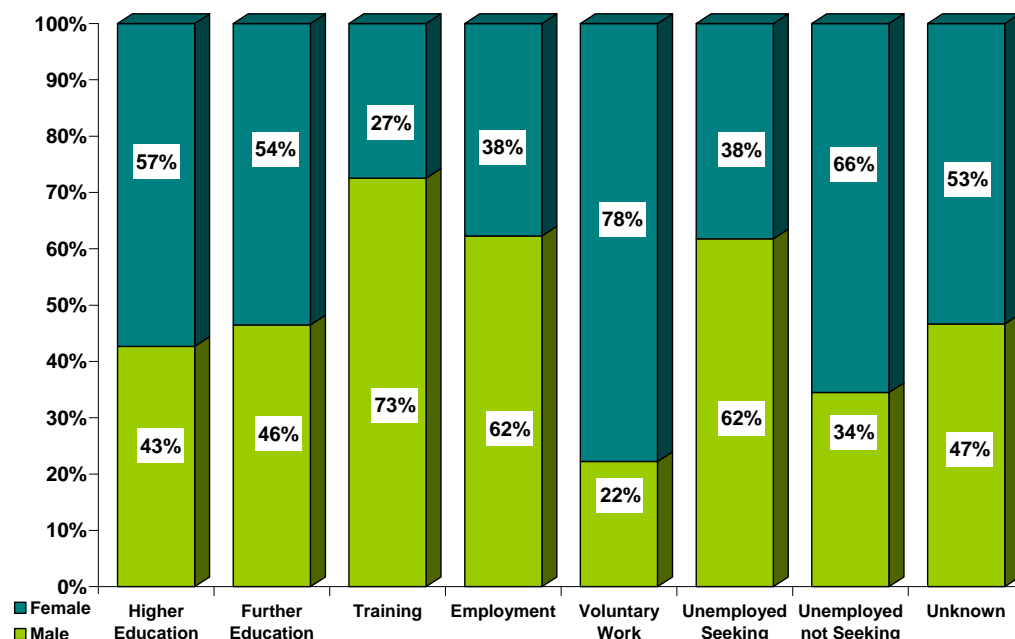


Table 8: Destination by SIMD

SIMD Decile ⁱⁱ	Destination by SIMD									
	Most Deprived					Least Deprived				
	1	2	3	4	5	6	7	8	9	10
Higher Education	4%	14%	15%	23%	33%	32%	35%	44%	48%	50%
Further Education	36%	24%	45%	32%	33%	34%	27%	22%	19%	17%
Training	12%	19%	5%	*	*	*	*	*	*	*
Employment	20%	19%	25%	26%	23%	22%	29%	26%	25%	23%
Voluntary Work	*	5%	*	*	*	*	*	*	*	*
Unemployed Seeking	20%	19%	5%	12%	8%	8%	6%	6%	5%	8%
U/E Not Seeking	8%	*	*	2%	*	*	*	*	*	*
Unknown	*	*	*	*	*	*	*	*	*	*
Positive Destinations	72%	81%	91%	86%	89%	90%	93%	93%	94%	92%
Total	25	21	75	159	209	315	358	654	499	429
% of Total Leavers	1%	1%	3%	6%	8%	11%	13%	24%	18%	16%

*Percentages based on 5 or less have been suppressed due to disclosure reasons.

- Across the SIMD areas there is a marked difference in the proportion of leavers entering positive destinations between the most deprived and the least deprived.
- Leavers who live in the least deprived areas are more likely to enter Higher Education in comparison to leavers who live in the most deprived areas. The proportion of leavers entering higher education from the least deprived area (50%) is over ten times the proportion for leavers from the most deprived areas (4%). The proportion of leavers entering higher education gradually rises as you move from the most deprived areas to the least deprived
- The majority of leavers from all SIMD Decile areas enter higher or further education.
- Across the SIMD areas there is a marked difference in the proportion of leavers being unemployed seeking apart for SIMD 1, 2 and 4.

Table 9: Destination by Stage Left School.

Stage of Leaving ⁱⁱⁱ Destination	Statutory Summer Leaver	Statutory Winter Leaver	Post Statutory Leaver
Higher Education	*	4%	52%
Further Education	48%	26%	19%
Training	5%	4%	1%
Employment	33%	45%	21%
Voluntary Work	*	*	*
Unemployed Seeking	13%	17%	4%
Unemployed Not Seeking	*	2%	1%
Unknown	*	*	1%
Positive Destinations	86%	80%	94%
Total Leavers	468	225	2,052
% of Total Leavers	17%	8%	75%

- It can be noted that the majority of school pupils choose to remain at school past their statutory leave date and this has an impact on their positive progression from school. Leavers who stay on past their statutory leave date are more likely to progress to positive outcomes on leaving school with the majority entering higher education.
- Statutory winter leavers are less likely to enter positive destinations and the highest proportion are reported as being in employment. Statutory winter leavers are four times as likely to be reported as unemployed seeking than a post statutory leaver.
- The highest proportions of statutory summer leavers enter further education with employment being the 2nd highest proportion.

Section 2: Positive Destinations

Section 2.1 Higher and Further Education

Higher Education (HE): This category includes leavers following HND (Higher National Diploma) or HNC (Higher National Certificate) courses, degree courses, courses for the education and training of teachers and higher level courses for professional qualifications. **27** young people with a deferred, unconditional place in higher education for next year have also been included in this year's figures.

Further Education (FE): This category includes leavers undertaking non advanced further education which is not higher education.

From those reported in the SLDR, **1,087** leavers entered Higher Education and **684** entered Further Education. Detailed analysis can be provided on **99.2% (1,757)** of this cohort for whom we hold information on institution and course chosen – Higher Education **99.7% (1,084)** & Further Education **98.4% (673)**.

Table 10: HE Entrants by Institution Type

Institution Type	Total	%
University / HE College	752	69%
FE College	305	28%
Other ¹	27	2%

¹ Other Category includes institutions out with Scotland and other private institutions

Skills Development Scotland Aberdeenshire Council School Leaver Destination Report 2009-10

Table 11: HE Students by Institution

Institution ^{iv}	Total	%	Institution	Total	%
The Robert Gordon University	275	25%	Napier University	21	2%
Aberdeen University	174	16%	St Andrews University	18	2%
Edinburgh University	57	5%	Stirling University	17	2%
Glasgow University	50	5%	Scottish Agricultural College	12	1%
Heriot Watt University	32	3%	Glasgow Caledonian University	7	1%
Strathclyde University	28	3%	Queen Margaret University Edinburgh	5	0%
Dundee University	25	2%	Other Institutions	36	3%
Abertay University Dundee	22	2%	FE College	305	28%

Institutions with less than 5 leavers are included in "Other Institutions" in the table above.

Table 12: HE Students by FE Colleges

Institution	Total	%	Institution	Total	%
Aberdeen College	262	24%	Moray College	6	1%
Banff and Buchan College	24	2%	Other Institutions	17	2%

Institutions with less than 5 leavers are included in "Other Institutions" in the table above.

Table 13: FE Students by FE Colleges

Institution	Total	%	Institution	Total	%
Aberdeen College	392	58%	Angus College	16	2%
Banff and Buchan College	215	32%	Other Institutions	17	3%
Moray College	17	3%	Other Colleges / Education Providers	16	1%

Institutions with less than 5 leavers are included in "Other Institutions" in the table above.

It can be noted from tables 11, 12 & 13 that the majority of leavers who continue their studies post school, chose to attend local institutions.

Table 14: Higher Education Course Information

Course Area	Total	%	Course Area	Total	%
Arts & Social Sciences	159	15%	Social, Caring & Advisory Services	39	4%
Health & Medicine	126	12%	Construction	31	3%
Science & Mathematics	126	12%	Teaching	30	3%
Engineering	124	11%	Hospitality, Catering & Tourism	29	3%
Administration & Management	80	7%	Communications & Media	25	2%
Art and Design	66	6%	Animals, Land & Environment	22	2%
Law	52	5%	Languages	16	1%
Computing & ICT	48	4%	Sales & Marketing	4	0%

Table 15: Further Education Course Information

Course Area	Total	%	Course Area	Total	%
Engineering	112	17%	Computing & ICT	30	4%
Social, Caring & Advisory Services	78	12%	General Education (Highers, etc)	26	4%
Hairdressing & Beauty	57	8%	Sport, Leisure & Sport Science	25	4%
Art and Design	48	7%	Arts & Social Sciences	23	3%
Construction	43	6%	Garage Services	21	3%
Health & Medicine	37	5%	Personal Dev. & Prep Courses	14	2%
Hospitality, Catering & Tourism	36	5%	Security & Protective Services	11	2%
Performing Arts	32	5%	Communications & media	9	1%
Administration & Management	31	5%	Other Course Areas	9	1%
Animals, Land & Environment	31	5%			

Skills Development Scotland Aberdeenshire Council School Leaver Destination Report 2009-10

This is the 3rd year that SDS has gathered fuller data, across Scotland, about the course areas entered by school leavers. It shows that Arts & Social Sciences, Health & Medicine, Science & Mathematics and Engineering based subjects are the most popular for those entering higher education.

Within further education, leavers studying vocational subjects such as Engineering, Social, Caring & Advisory Services and Hairdressing & Beauty are the most popular choices.

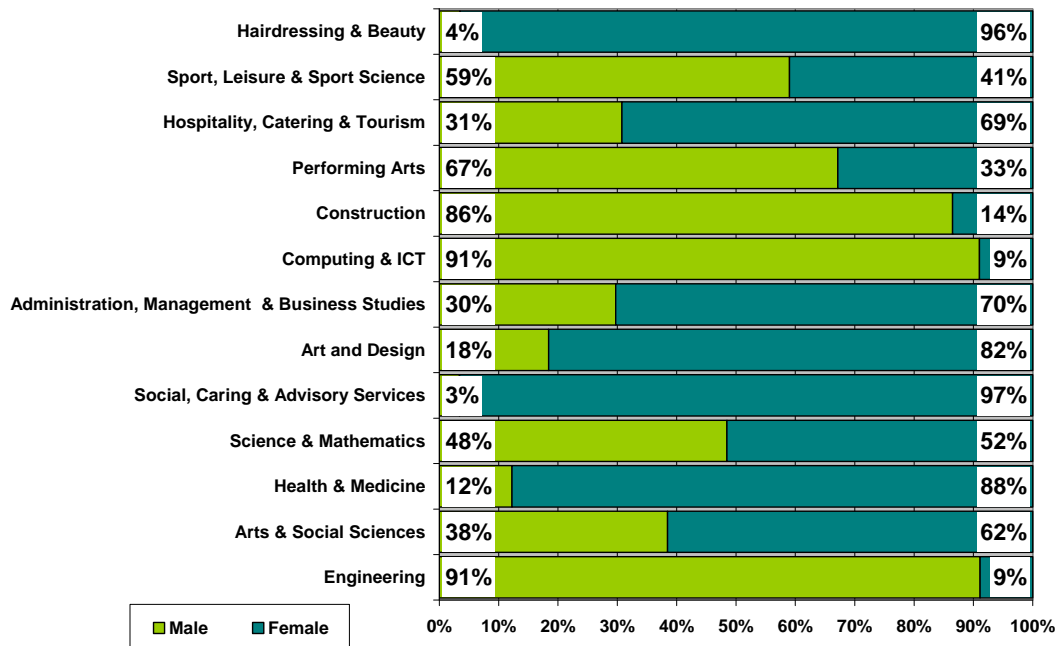
Table 16: Course Information by Gender

Course Area	Male		Female	
	Total	%	Total	%
Engineering	215	28%	21	2%
Arts & Social Sciences	70	9%	112	11%
Health & Medicine	20	3%	143	15%
Science & Mathematics	63	8%	67	7%
Social, Caring & Advisory Services	*	*	113	12%
Art and Design	21	3%	93	9%
Administration & Management	33	4%	78	8%
Computing & ICT	71	9%	7	1%
Construction	64	8%	10	1%
Performing Arts	45	6%	22	2%
Hospitality, Catering & Tourism	20	3%	45	5%
Sport, Leisure & Sport Science	36	5%	25	3%
Hairdressing & Beauty	*	*	55	6%
Animals, Land & Environment	14	2%	39	4%
Law	13	2%	39	4%
Finance	12	2%	24	2%
Communications & Media	14	2%	20	2%
Teaching	*	*	27	3%
General Education (Highers, etc)	12	2%	14	1%
Garage Services	20	3%	*	*
Languages	5	1%	11	1%
Personal Dev. & Prep Courses	11	1%	*	*
Security & Protective Services	6	1%	5	1%
Sales & Marketing	*	*	*	*
Clothing & Textile Operations	*	*	*	*
Transport & Distribution	*	*	*	*
Classroom Support	*	*	*	*

Courses with less than 5 leavers have been suppressed

Skills Development Scotland Aberdeenshire Council School Leaver Destination Report 2009-10

Table 17: Gender split within the course areas in both FE/HE



The most popular courses in FE/HE for females are Health & Medicine (**15%**), Social, Caring & Advisory Services (**12%**) and Arts & Social Sciences (**11%**)

The most popular courses in FE/HE for males are Engineering (**28%**), Arts & Social Sciences (**9%**) and Science & Mathematics (**8%**)

The courses in FE/HE with the most even balance between males and females are Science & Mathematics, Sport, Leisure & Sports Science and Performing Arts.

Section 2.2: Employment

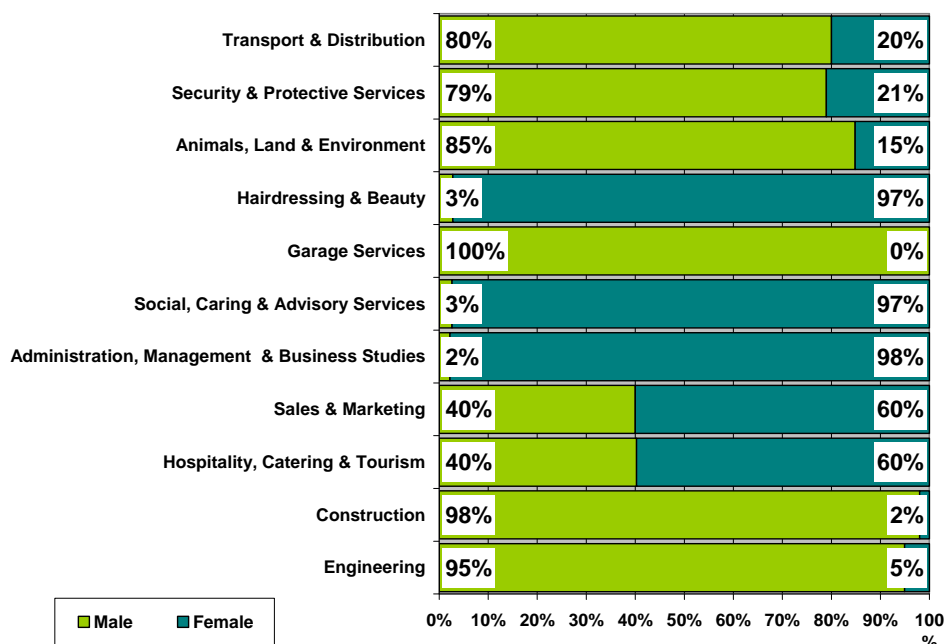
Employment: This category includes those who are employed and who are in receipt of payment from their employers. It includes young people undertaking training in employment through Skillseekers and Modern Apprenticeships. 676 young people entered Employment and analysis can be provided on all of those entering employment for whom we hold information about the occupational area entered.

Table 18: Those entering Employment by Occupational Area

Occupational Area	Male		Female	
	Total	%	Total	%
Engineering	149	35%	8	3%
Construction	98	23%	*	*
Hospitality, Catering & Tourism	31	7%	46	18%
Sales & Marketing	30	7%	45	18%
Administration & Management	*	*	45	18%
Social, Caring & Advisory Services	*	*	37	15%
Garage Services	36	9%	*	*
Hairdressing & Beauty	*	*	35	14%
Animals, Land & Environment	28	7%	5	2%
Security & Protective Services	15	4%	*	*
Transport & Distribution	12	3%	*	*
Health & Medicine	*	*	9	4%
Sport, Leisure & Sport Science	8	2%	*	*
Manufacturing	*	*	*	*
Finance	*	*	6	2%
Art and Design	*	*	*	*
Classroom Support	*	*	*	*
Computing & ICT	*	*	*	*
Performing Arts	*	*	*	*
Laboratory technician	*	*	*	*

*Occupational areas with less than 5 leavers have been suppressed

Table 19: Gender split within the top employment areas



Skills Development Scotland Aberdeenshire Council School Leaver Destination Report 2009-10

The most popular area of employment entered by school leavers is Engineering and Construction. The majority of males enter Garage Services, Construction and Engineering with **67%** of male leavers gaining employment in these occupational areas. The 3 most popular occupational areas with female leavers are Social, Caring & Advisory Services, Administration, Management & Business Studies and Hairdressing & Beauty with **53%** entering these areas.

Section 3: Other Destinations

School leavers who do not achieve a positive destination on leaving school are known as the MCMC group and are key customers for Skills Development Scotland and our partner organisations. The SLDR is a snapshot in time and should only be used as an indicator.

Unemployed and seeking employment or training: This category includes those who are in contact with SDS and are known by them to be seeking employment or training. This is based on regular contact between SDS and the client. This does not refer to the definition of 'unemployed' used by the Benefits Agency to calculate published unemployment rates. In 2009-10 it also included those individuals undertaking personal skills development^v (21)

Unemployed and not seeking employment or training: This category includes all those individuals who are not seeking employment or training for a range of reasons. These individual circumstances may involve sickness, prison, pregnancy, caring for children or other dependents or taking time out.

Section 3.1 Unemployed Seeking

The table provides a comparison of the percentage of unemployed seeking clients with specific characteristics as opposed to the rate of the full SLDR cohort

Table 20: Client Characteristics

Characteristics	% of Full SLDR	% of Unemployed Seeking
Gender		
Male	50.2%	61.8%
Female	49.8%	38.2%
Stage Left School		
Statutory Summer Leaver	17.0%	31.9%
Statutory Winter Leaver	8.2%	20.4%
Post Statutory Leaver	74.8%	47.6%
Qualifications on Leaving School^{vi}		
Access 1 / No formal Qualifications	0.5%	3.1%
Access 2&3/Foundation Stand. Grade	1.2%	7.9%
General Standard Grade/ Intermediate1	18.4%	39.8%
Credit Standard Grade/ Intermediate 2	28.2%	27.2%
Highers/Advanced Higher	51.0%	19.9%
Unknown	0.7%	2.1%
Health And Additional Support Needs^{vii}		
Formerly Looked After/Care leaver	1.6%	7.3%
Additional Support Plan Recorded	11.2%	20.9%
Health Factor/Additional Support Need Identified	16.2%	30.9%

Skills Development Scotland Aberdeenshire Council School Leaver Destination Report 2009-10

Table 20: Client Characteristics (cont)

Characteristics		% of Full SLDR	% of Unemployed Seeking
SIMD Decile Ranking /Deprivation (SIMD 2009)			
Most deprived	1	0.9%	2.6%
	2	0.8%	2.1%
	3	2.7%	2.1%
	4	5.8%	9.9%
	5	7.6%	8.9%
	6	11.5%	12.6%
	7	13.0%	11.5%
	8	23.8%	19.9%
	9	18.2%	13.1%
Least Deprived	10	15.6%	17.3%

- Although male leavers account for only **50%** of the leaving cohort they account for almost **62%** of leavers reported as unemployed seeking.
- Statutory winter leavers represent only **8%** of the whole SLDR cohort but are disproportionately represented within the leavers reported as unemployed seeking at **20%**, as are statutory summer leavers.
- The largest proportion of unemployed seeking leavers have general level standard grades
- Leavers who have health problems/ additional support needs are disproportionately represented within the leavers reported as unemployed seeking.

Table 21: Leavers by Intermediate Data zone

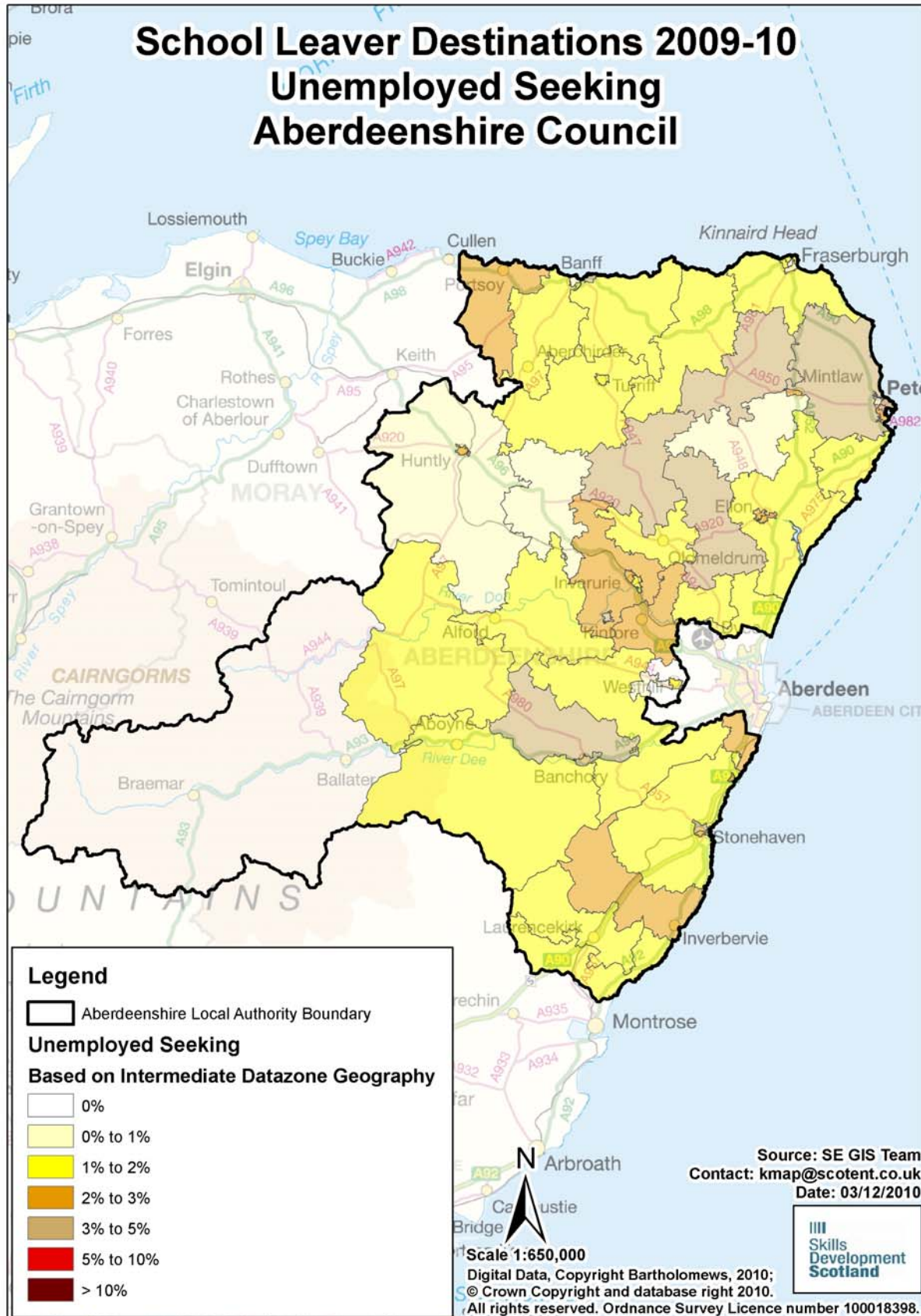
There were **191** leavers from Aberdeenshire schools who were reported as unemployed seeking in the SLDR. By using postcodes, we were able to identify areas within the authority where unemployed school leavers were living. However, at the snapshot, **12** of the leavers were living outside the local authority area but a further **12** unemployed seeking school leavers from other local authority schools were residing within the local authority boundaries. The analysis below is based on **191** leavers residing in the authority and who SDS held postcode information for. The table below shows the intermediate data zones with the highest percentage of unemployed leavers.

Intermediate Data zone ^{viii}	Total	%	Intermediate Data zone	Total	%
Crathes and Torphins	8	4%	Banchory	6	3%
Macduff	8	4%	Deer and Mormond	6	3%
Fyvie-Rothie	7	4%	Peterhead Bay	6	3%
Kemnay	7	4%	Peterhead Harbour	6	3%
Longside and Rattray	7	4%	Ythsie	6	3%
Stonehaven North	7	4%	Mintlaw	5	3%

Intermediate Data zone areas with less than 5 leavers have been suppressed

Table 22: Destinations of School Leavers: % Unemployed Seeking, 2009/10

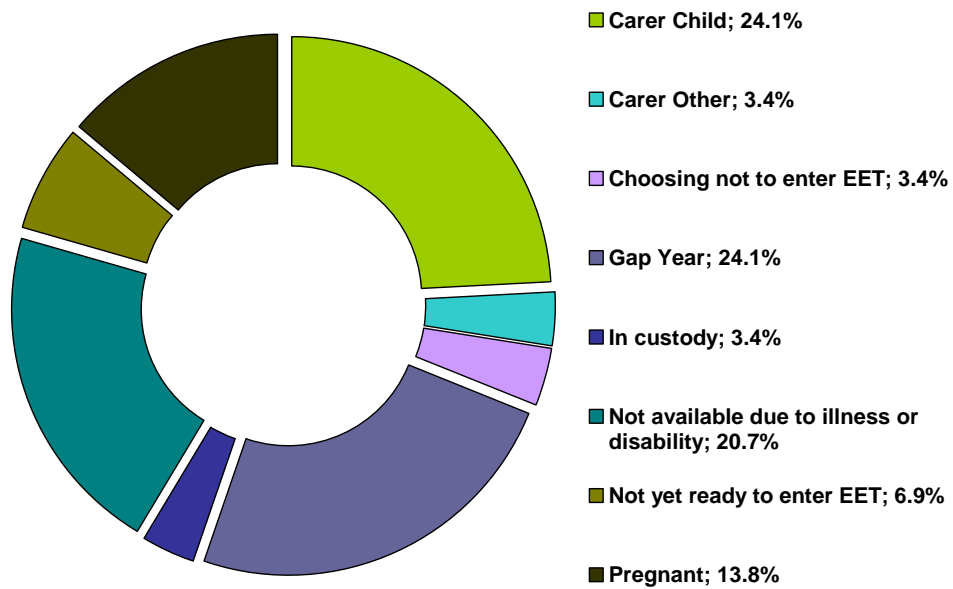
The map shows the intermediate data zones where the 191 leavers who were residing within the local authority boundary reside. Percentages have been calculated as a proportion of the number of leavers reported.



Section 3.2 Unemployed NOT Seeking

There were 29 school leavers within this category.

Table 23: Individual Circumstances of those Unemployed NOT Seeking



Section 3.3 Unknown

There were 15 school leavers whose current destination was unknown at the time of SLDR.

Table 24: Destinations by School, Percentage

School	Higher Education	Further Education	Training	Employment	Voluntary Work	Unemployed Seeking	Unemployed Not Seeking	Not Known	Total Leavers	% Pos	% Other
Aboyne Academy	40.4%	18.0%	0.0%	27.0%	1.1%	9.0%	1.1%	3.4%	89	86.5%	13.5%
Alford Academy	61.2%	6.1%	0.0%	26.5%	0.0%	3.1%	0.0%	3.1%	98	93.9%	6.1%
Banchory Academy	48.0%	17.5%	1.2%	25.1%	0.0%	7.6%	0.0%	0.6%	171	91.8%	8.2%
Banff Academy	36.1%	33.7%	2.4%	20.0%	0.0%	5.9%	1.5%	0.5%	205	92.2%	7.8%
Ellon Academy	43.7%	24.2%	1.4%	24.2%	0.5%	5.6%	0.5%	0.0%	215	94.0%	6.0%
Fraserburgh Academy	25.0%	38.3%	4.2%	27.5%	0.0%	3.8%	1.3%	0.0%	240	95.0%	5.0%
Inverurie Academy	32.7%	27.0%	2.5%	30.2%	0.0%	5.0%	1.3%	1.3%	159	92.5%	7.5%
Kemnay Academy	31.1%	30.0%	0.0%	26.7%	1.1%	11.1%	0.0%	0.0%	90	88.9%	11.1%
Mackie Academy	41.1%	27.0%	0.5%	18.4%	0.5%	10.8%	1.6%	0.0%	185	87.6%	12.4%
Mearns Academy	41.4%	22.5%	2.7%	27.9%	0.0%	5.4%	0.0%	0.0%	111	94.6%	5.4%
Meldrum Academy	51.0%	24.5%	0.7%	14.3%	0.0%	8.2%	1.4%	0.0%	147	90.5%	9.5%
Mintlaw Academy	34.9%	25.8%	1.9%	23.9%	0.5%	10.5%	2.4%	0.0%	209	87.1%	12.9%
Peterhead Academy	24.9%	27.7%	4.3%	31.6%	0.4%	9.5%	1.6%	0.0%	253	88.9%	11.1%
Portlethen Academy	41.0%	20.8%	2.8%	27.1%	0.0%	6.9%	0.0%	1.4%	144	91.7%	8.3%
The Gordon Schools	48.0%	17.6%	0.7%	23.6%	0.0%	7.4%	2.0%	0.7%	148	89.9%	10.1%
Turriff Academy	35.7%	30.2%	0.8%	25.6%	0.8%	4.7%	0.8%	1.6%	129	93.0%	7.0%
Westhill Academy	60.5%	12.5%	0.7%	21.1%	1.3%	3.3%	0.7%	0.0%	152	96.1%	3.9%
Aberdeenshire Council	39.6%	24.9%	1.9%	24.7%	0.3%	7.0%	1.1%	0.5%	2,745	91.4%	8.6%

Background Notes:

ⁱ **Positive Destinations:** includes higher education, further education, training, employment and voluntary work. See text above for explanation of each destination heading.

ⁱⁱ **The Scottish Index of Multiple Deprivation (SIMD):** SIMD identifies small area concentrations of multiple deprivation across all of Scotland in a consistent way. SDS uses a file created by Scottish Neighbourhood Statistics to identify SIMD based on an individual leaver's postcode. The leaver's postcode is based on the last known address of the leaver as recorded on our client management system. Where there were gaps in the data held on our CMS, the last known address supplied in the annual import of pupil details has been used. As the last known postcode is used it may be that a leaver from one local authority was living in another local authority at the time of the return. Therefore, the SIMD relates to where a leaver was living and not the concentration of SIMD within a local authority.

ⁱⁱⁱ **Stage of Leaving:** A **statutory summer leaver** is a school leaver who chooses to leave school at the earliest opportunity (31st May) when they become eligible to leave school i.e. their 16th birthday falls on or between 1st March and 30th September in their year of leaving. A **statutory winter leaver** is a school leaver who chooses to leave school at the earliest opportunity when they become eligible to leave school i.e. their 16th birthday falls between 1st October and the last day in February. A **post statutory leaver** is a school leaver who chose to remain at school past their statutory leave date e.g. a winter leaver who would have been eligible to leave at the winter leave date but choose to remain at school until the summer leave date. Included in this group are leavers who have past their statutory leave date and have left school at any stage throughout the year.

^{iv} **Institutions:** through our follow up of leavers, we confirm Further and Higher Education destinations and as part of the process we request further information about the institution a leaver is attending. This is not a requirement of the Scottish Government and the information displayed is based on the recorded detail on Insight, the SDS

^v **Personal Skills Development:** - Some leavers are not yet ready, or in a position to make an immediate transition to a formal positive destination. In such cases leavers may participate in learning opportunities / personal and social development activities with the aim of improving their confidence and employability. These programmes can be viewed as a stepping stone towards a more formal positive destination. They are often delivered by a community learning and development or third sector organisation and can include the activity agreement pilots. It was agreed, with the Scottish Government, that individuals undertaking these activities would be reported within the unemployed seeking SLDR category.

^{vi} **Qualifications on leaving school:** This information is based on pre-appeal information from the Scottish Qualifications Agency where SDS received information about a leaver's qualifications and a robust match of records was made. Where no match was made the qualification level has been gathered through our interaction with individuals.

^{vii} **Qualifications on leaving school:** This information is based on pre-appeal information from the Scottish Qualifications Agency where SDS received information about a leaver's qualifications and a robust match of records was made. Where no match was made the qualification level has been gathered through our interaction with individuals.

^{viii} **Intermediate Data zone Geography:** The data zone is the key small area statistical geography in Scotland. The intermediate geography is built up from data zones and can be used to disseminate statistics that are not suitable for release at the data zone level. Due to the small number of individuals it has been decided to use the intermediate level geography. There are 1235 intermediate zones in Scotland, containing on average 4000 household residents and these have been designed to respect local authority boundaries as at 2001 Census.