

**School Leaver Destination Report**

**2009 – 2010**

**East Lothian Council**

## Contents

<b>Section 1: Overview – Main Findings</b> .....	<b>3</b>
<i>Table 1: Destination Totals</i> .....	4
<i>Table 2: Local Authority Comparison to Scotland</i> .....	5
<b>Section 1.1 - Annual Trends</b> .....	<b>5</b>
<i>Table 3: Trends 2000 – 2010 of Positive Destinations</i> .....	5
<i>Table 4: Trends 2000 – 2010 of Other Destinations</i> .....	6
<i>Table 5: Destinations from 2000 to 2010</i> .....	6
<b>Section 1.2: Client Characteristics</b> .....	<b>7</b>
<i>Table 6: Destination split by Gender</i> .....	7
<i>Table 8: Destination by SIMD</i> .....	8
<i>Table 9: Destination by Stage Left School.</i> .....	9
<b>Section 2.1 Higher and Further Education</b> .....	<b>9</b>
<i>Table 10: HE Entrants by Institution Type</i> .....	9
<i>Table 11: HE Students by Institution</i> .....	10
<i>Table 12: HE Students by FE Colleges</i> .....	10
<i>Table 13: FE Students by FE Colleges</i> .....	10
<i>Table 14: Higher Education Course Information</i> .....	10
<i>Table 15: Further Education Course Information</i> .....	10
<i>Table 16: Course Information by Gender</i> .....	11
<i>Table 17: Gender split within the course areas in both FE/HE</i> .....	12
<b>Section 2.2: Employment</b> .....	<b>13</b>
<i>Table 18: Those entering Employment by Occupational Area</i> .....	13
<i>Table 19: Gender split within the top employment areas</i> .....	13
<b>Section 3: Other Destinations</b> .....	<b>15</b>
<b>Section 3.1 Unemployed Seeking</b> .....	<b>15</b>
<i>Table 20: Client Characteristics</i> .....	15
<i>Table 21: Leavers by Intermediate Data zone</i> .....	16
<i>Table 22: Destinations of School Leavers: % Unemployed Seeking, 2009/10</i> .....	17
<b>Section 3.2 Unemployed NOT Seeking</b> .....	<b>18</b>
<i>Table 23: Individual Circumstances of those Unemployed NOT Seeking</i> .....	18
<b>Section 3.3 Unknown</b> .....	<b>18</b>
<i>Table 24: Destinations by School, Percentage</i> .....	19
<i>Background Notes:</i> .....	20

### Background

The School Leaver Destination Return (SLDR) is a statistical return undertaken by Skills Development Scotland (SDS) on behalf of the Scottish Government. The Return is based on a follow up of young people who left school between the 1st of August 2009 and the 31st of July 2010. This exercise was carried out during the month of September 2010.

The Scottish Government use the data produced from the Return to report against the National Indicator and target, “increase the proportion of school leavers (from Scottish publicly funded schools) in positive and sustained destinations (FE, HE, employment or training)”. Partners, particularly Local Authorities, use the data to inform initiatives developed as part of the More Choices More Chances Strategy, to evidence the success of initiatives, measure progress against targets, and to identify areas to target resources to improve the post school outcomes for young people.

### Methodology

The return is carried out during the month of September with staff across Skills Development Scotland following up over 55,000 school leavers. Destinations are confirmed throughout the follow up period and the destination that is reported is the destination that is known at the snapshot date. This year, we reported the information as known to us on 2nd October 2010. Destinations of young people are fluid in nature, therefore, it is possible that a leaver entered employment or training on leaving school but by the time the snapshot was taken this destination may have changed to another destination.

The information that is gathered is recorded within the SDS CMS system (Insight) which enables us to produce MIS reports and populate the data fields to be sent to the Government. This data is transferred at an individual level and undergoes a matching & validation process until a cohort is agreed. This allows the government’s analytical services unit to match the client’s individual outcome with other indicators such as social economic background, additional support needs and stage of leaving, etc. All information in this report, however, is based upon data held within the SDS Insight database which has been analysed to produce the graphs and tables contained within this report.

### Analysis

Only leavers from publicly funded secondary schools are within the scope of the SLDR. This report relates to **1,054** leavers from publicly funded secondary schools. This relates to an increase of **12%** more leavers this year in comparison to the SLDR in 2008-09.

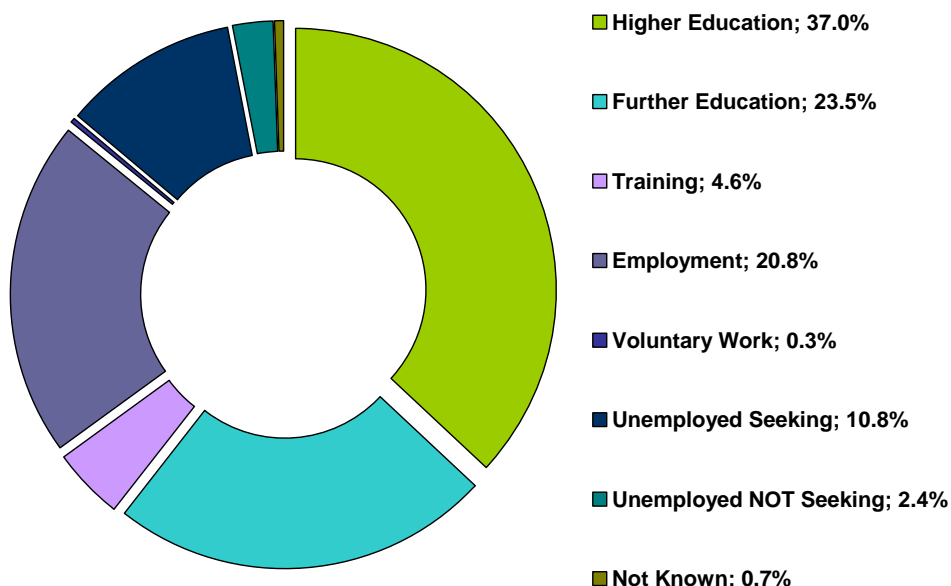
## Section 1: Overview – Main Findings

- Overall the percentage of leavers entering a positive destination<sup>i</sup> is **86.1%**, a rise of **2.7%** on last year. This increase has resulted in the authority moving from the 25<sup>th</sup> highest proportion of positive destinations in Scotland reported in the 2008-09 SLDR to the 22<sup>nd</sup> this year by local authority to the twenty second.
- The percentage of leavers entering further and higher education was **60.5%**, which is a **0.4%** fall on last year. The percentage of leavers entering Higher Education has fallen by **1.3 %** to **37%** since last year. East Lothian has dropped from the 6th to the 11th authority with the highest proportion of leavers entering Higher Education. The number of leavers entering Higher Education has however, increased steadily over the last 10 years by **10%** despite the slight drop this year. .
- The percentage of leavers entering Further Education in East Lothian has increased since last year to **23.5%** which is **4.6%** below the Scottish average. There has, however, been a steady rise of **9.5%** in the proportion of leavers entering Further Education since 2000-01.

## Skills Development Scotland East Lothian School Leaver Destination Report 2009-10

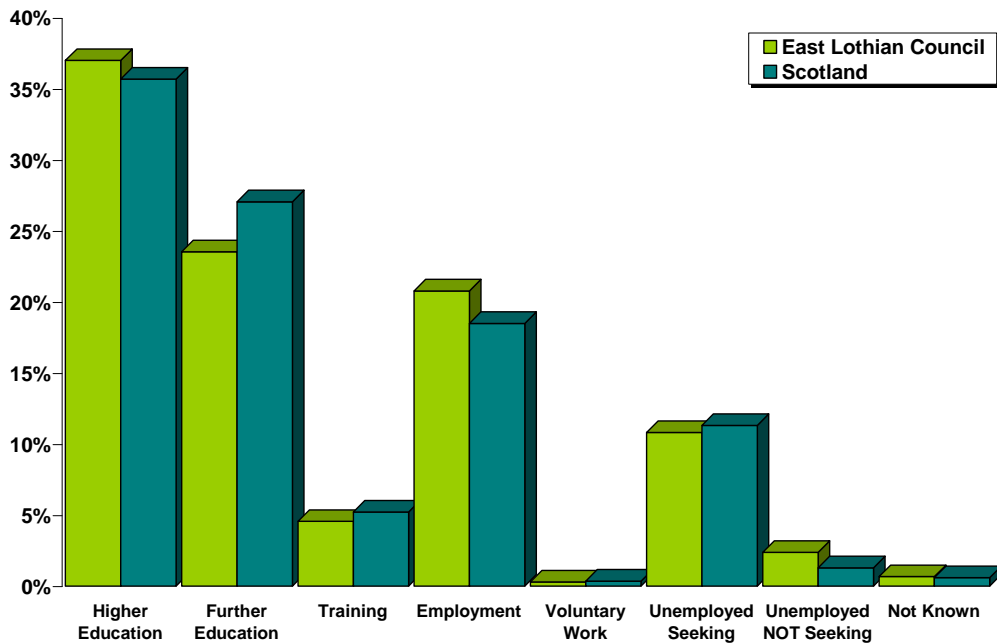
- The percentage of leavers entering Employment has increased since last year from **19.1%** to **20.8%**. However, in 2008-9 there was a significant decrease of **11.8%** in the proportion entering Employment, and there has been an overall **17.1%** decrease since 2000-01.
- The percentage entering training has increased by **1.4%** from last year to **4.6%**. The lowest number entering training was in 2005-06 at **1.1%** and is now just **0.5%** above the 2000-01 level.
- The percentage of leavers who are Unemployed Seeking has fallen to **10.8%** from **13.2%** last year, and is **0.5%** lower than the national average. The highest level of Unemployed Seeking reported in the last 10 years was in 2002-03 at **10.8%**.
- School leavers whose destination is Unknown to SDS has fallen to its lowest recorded level at **0.7%**.

**Table 1: Destination Totals**



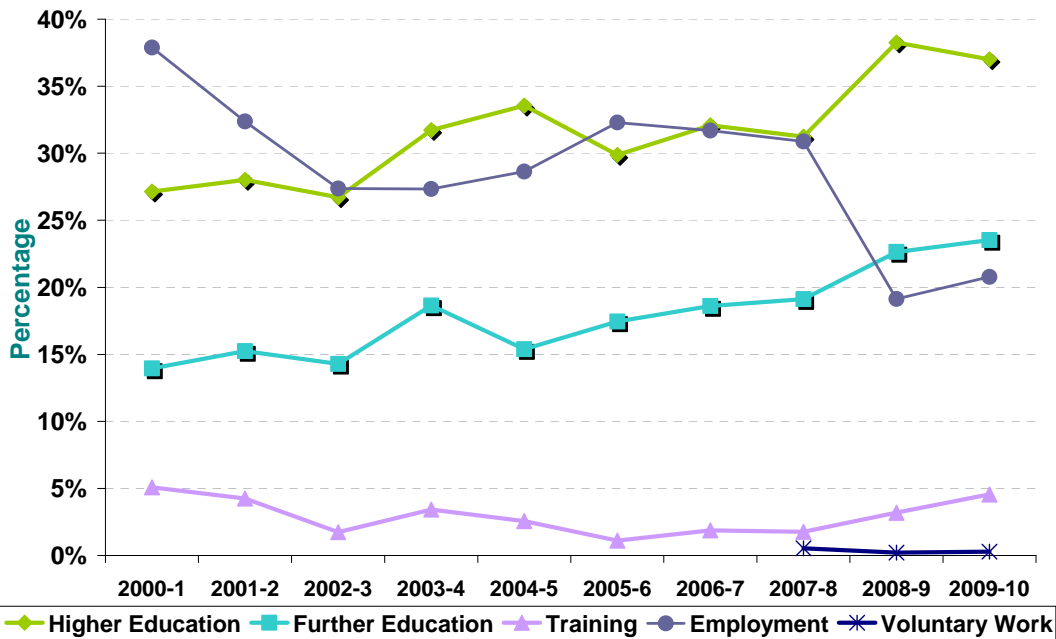
Area	Total Leavers	Higher Education	Further Education	Training	Employment	Voluntary Work	Unemployed Seeking	Unemployed NOT Seeking	Not Known
East Lothian	1,054	37.0% 390	23.5% 248	4.6% 48	20.8% 219	0.3% 3	10.8% 114	2.4% 25	0.7% 7
Scotland	54,097	35.7% 19,309	27.1% 14,637	5.2% 2,822	18.5% 10,005	0.3% 187	11.3% 6,117	1.3% 696	0.6% 324

Table 2: Local Authority Comparison to Scotland



Section 1.1 - Annual Trends

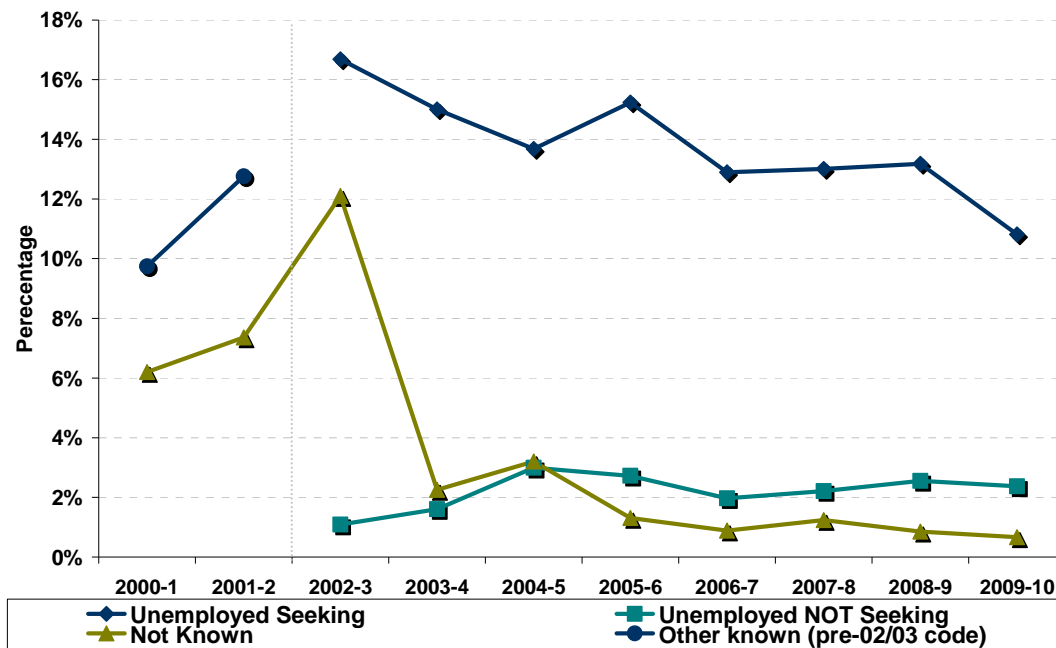
Table 3: Trends 2000 – 2010 of Positive Destinations



Note: Voluntary Work has been included as a separate destination category since the 2007- 08 SLDR return but was reported within the unemployed not seeking category previously.

The percentage of leavers entering Higher Education is currently **37%** which is **9.9%** higher than 10 years ago. The proportion of leavers entering Further Education has risen steadily over the last 10 years by **9.5%** and is at its highest level this year at **23.5%**. In comparison there has been a drop by **17.1%** in the number of leavers entering Employment over the last 10 years to **20.1%**. The lowest level reported was **19.1%** in 2008-09.

Table 4: Trends 2000 – 2010 of Other Destinations



The proportion of leavers reported as Unemployed Seeking has fallen by 5.9% to 10.8% over the last 10 years peaking at 16.7% in 2002-03.

As previously stated, the percentage of leavers Unknown has fallen to the lowest level ever at 0.7%.

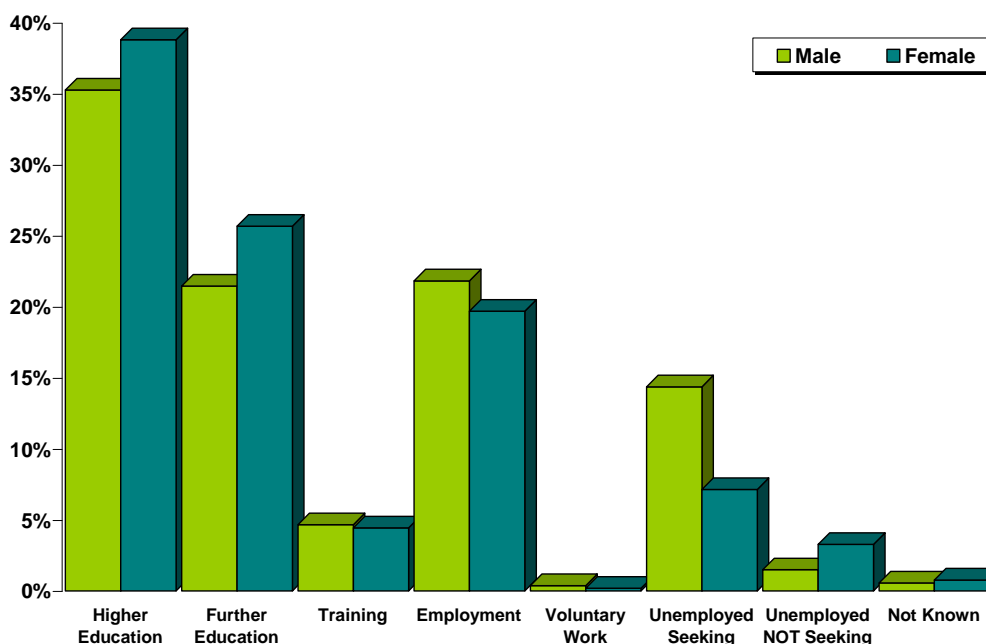
Table 5: Destinations from 2000 to 2010

Year	Total Leavers	Higher Education	Further Education	Training	Employment	Voluntary Work	Unemployed Seeking	Unemployed NOT Seeking	Not Known	Other Known
2000-1	903	27.1%	14.0%	5.1%	37.9%				6.2%	9.7%
2001-2	964	28.0%	15.2%	4.3%	32.4%				7.4%	12.8%
2002-3	917	26.7%	14.3%	1.7%	27.4%		16.7%	1.1%	12.1%	
2003-4	933	31.7%	18.6%	3.4%	27.3%		15.0%	1.6%	2.3%	
2004-5	936	33.5%	15.4%	2.6%	28.6%		13.7%	3.0%	3.2%	
2005-6	991	29.9%	17.5%	1.1%	32.3%		15.2%	2.7%	1.3%	
2006-7	1,016	32.1%	18.6%	1.9%	31.7%		12.9%	2.0%	0.9%	
2007-8	1,130	31.2%	19.1%	1.8%	30.9%	0.5%	13.0%	2.2%	1.2%	
2008-9	941	38.3%	22.6%	3.2%	19.1%	0.2%	13.2%	2.6%	0.9%	
2009-10	1,054	37.0%	23.5%	4.6%	20.8%	0.3%	10.8%	2.4%	0.7%	

Note: Prior to 2002-03 both the unemployed seeking and unemployed not seeking categories were reported in a separate category called Other Known. This is reflected in the table and graph above.

Section 1.2: Client Characteristics

Table 6: Destination split by Gender

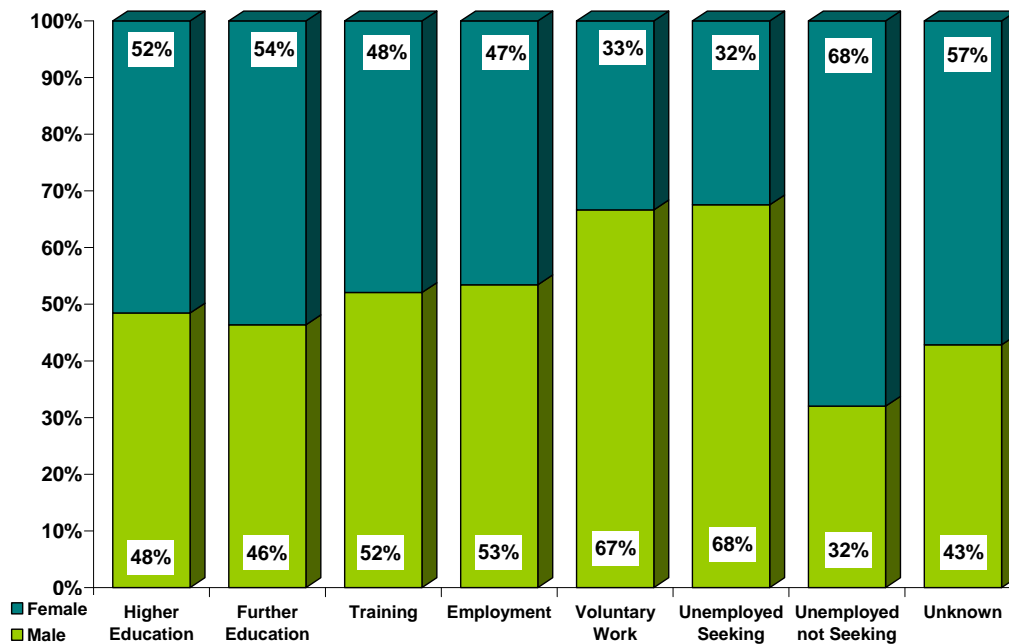


Year	Total Leavers	Higher Education	Further Education	Training	Employment	Voluntary Work	Unemployed Seeking	Unemployed NOT Seeking	Not Known
Male	536	35.3%	21.5%	4.7%	21.8%	0.4%	14.4%	1.5%	0.6%
Female	518	38.8%	25.7%	4.4%	19.7%	0.2%	7.1%	3.3%	0.8%

The proportion of males entering a positive destination on leaving school is **5.2%** lower than females with males at **83.6%** and females at **88.8%**. The proportion of females (**64.5%**) continuing in either Further or Higher Education is **7.8%** higher than males (**56.7%**) respectively.

The percentage of males entering Employment and Training at **26.5%** is **2.4%** higher than that for females at **24.1%**. The percentage of male leavers (**12.7%**) who are Unemployed is **3.8%** higher than the percentage of female leavers (**8.9%**) respectively.

**Table 7: Gender split within each destination**



**Table 8: Destination by SIMD**

SIMD Decile <sup>ii</sup>	Most Deprived → Least Deprived									
	1	2	3	4	5	6	7	8	9	10
Higher Education		21%	14%	23%	35%	31%	43%	40%	59%	53%
Further Education		21%	32%	27%	25%	30%	25%	22%	14%	14%
Training		11%	6%	5%	7%	5%	5%	*	*	*
Employment		23%	23%	26%	15%	23%	17%	23%	18%	22%
Voluntary Work		*	*	*	*	*	*	*	*	*
Unemployed Seeking		21%	16%	17%	16%	8%	8%	8%	7%	6%
U/E Not Seeking		*	7%	*	*	*	*	*	*	*
Unknown		*	*	*	*	*	*	*	*	*
<b>Positive Destinations</b>	<b>0</b>	<b>77%</b>	<b>75%</b>	<b>81%</b>	<b>81%</b>	<b>88%</b>	<b>90%</b>	<b>88%</b>	<b>93%</b>	<b>92%</b>
<b>Total</b>		<b>47</b>	<b>96</b>	<b>100</b>	<b>138</b>	<b>111</b>	<b>195</b>	<b>162</b>	<b>100</b>	<b>103</b>
<b>% of Total Leavers</b>		<b>4%</b>	<b>9%</b>	<b>9%</b>	<b>13%</b>	<b>11%</b>	<b>19%</b>	<b>15%</b>	<b>9%</b>	<b>10%</b>

Percentages based on 5 or less have been suppressed due to disclosure reasons.

- There are no leavers in East Lothian who reside in a SIMD 1 area
- Leavers who live in the least deprived areas are more likely to enter positive destinations on leaving school than those from the most deprived area. There is a **15%** difference in the proportion entering positive outcomes with **92%** of those in SIMD 10 entering positive destinations compared to **77%** in SIMD 2.
- Leavers who live in the least deprived areas are more likely to enter Higher Education in comparison to leavers who live in the most deprived areas. The proportion of leavers entering Higher Education from the least deprived area SMID 10 was **53%** and the proportion of leavers from the most deprived area SIMD 2 was **21%**.
- Leavers from the most deprived areas are more likely to be unemployed seeking than leavers from the least deprived areas. For example, **21%** of the leavers from SIMD 2 were reported as Unemployed Seeking in comparison to **6%** from SIMD 10.
- There were 2 leavers whose SIMD area is unknown. Both entered positive destinations.

**Table 9: Destination by Stage Left School.**

Stage of Leaving <sup>iii</sup> Destination	Statutory Summer Leaver	Statutory Winter Leaver	Post Statutory Leaver
Higher Education	1%	0%	48%
Further Education	37%	24%	21%
Training	15%	11%	2%
Employment	20%	40%	19%
Voluntary Work	0%	0%	0%
Unemployed Seeking	25%	20%	7%
Unemployed Not Seeking	1%	2%	3%
Unknown	0%	3%	0%
Positive Destinations	73%	75%	90%
<b>Total Leavers</b>	<b>142</b>	<b>95</b>	<b>817</b>
<b>% of Total Leavers</b>	<b>13%</b>	<b>9%</b>	<b>78%</b>

- It can be noted that the majority of school pupils choose to remain at school past their statutory leave date and this has an impact on their positive progression from school. Leavers who stay on past their statutory leave date are more likely to progress to positive outcomes on leaving school with the majority entering higher education.
- Although they are in the minority, statutory winter leavers are less likely to enter positive destinations than other leavers. The highest proportion of winter leavers are reported as being in Employment (**40%**). They (**20%**) are almost three times more likely to be reported as unemployed seeking than a post statutory leaver (**7%**).
- The highest proportion of statutory summer leavers entered Further Education (**37%**), The next highest proportion of leavers were reported as Unemployed Seeking (**25%**) and the third highest was Employment (**20%**).

## Section 2: Positive Destinations

### Section 2.1 Higher and Further Education

**Higher Education (HE):** This category includes leavers following HND (Higher National Diploma) or HNC (Higher National Certificate) courses, degree courses, courses for the education and training of teachers and higher level courses for professional qualifications. **27** young people with a deferred, unconditional place in higher education for next year have also been included in this year's figures.

**Further Education (FE):** This category includes leavers undertaking non advanced further education which is not higher education.

From those reported in the SLDR, **390** leavers entered Higher Education and **248** entered Further Education. Detailed analysis can be provided on **99.7% (636)** of this cohort for whom we hold information on institution and course chosen – Higher Education **99.7% (389)** & Further Education **99.6% (247)**.

**Table 10: HE Entrants by Institution Type**

Institution Type	Total	%
University / HE College	292	75%
FE College	84	22%
Other <sup>1</sup>	13	3%

<sup>1</sup> Other Category includes institutions out with Scotland and other private institutions

**Table 11: HE Students by Institution**

Institution <sup>iv</sup>	Total	%	Institution	Total	%
Edinburgh University	59	15%	Stirling University	15	4%
Napier University	53	14%	The Robert Gordon University	14	4%
Heriot Watt University	22	6%	Glasgow Caledonian University	9	2%
Queen Margaret University Edinburgh	22	6%	St Andrews University	8	2%
Aberdeen University	19	5%	Strathclyde University	8	2%
Glasgow University	19	5%	Outwith Scotland	13	3%
Abertay University Dundee	17	4%	Other Institutions	12	3%
Dundee University	15	4%	FE Colleges	84	22%

Institutions with less than 5 leavers are included in "Other Institutions" in the table above.

**Table 12: HE Students by FE Colleges**

Institution	Total	%	Institution	Total	%
Jewel and Esk College	42	11%	Stevenson College	16	4%
Edinburgh's Telford College	18	5%	Other Colleges	8	2%

Institutions with less than 5 leavers are included in "Other Institutions" in the table above.

**Table 13: FE Students by FE Colleges**

Institution	Total	%	Institution	Total	%
Jewel and Esk College	149	60%	Elmwood College	5	2%
Edinburgh's Telford College	68	28%	Other Colleges / Education Providers	16	6%
Stevenson College	9	4%			

Institutions with less than 5 leavers are included in "Other Institutions" in the table above.

It can be noted from tables 11, 12 & 13 that the majority of leavers who continue their studies post school, choose to attend local institutions.

**Table 14: Higher Education Course Information**

Course Area	Total	%	Course Area	Total	%
Arts & Social Sciences	80	21%	Art and Design	12	3%
Science & Mathematics	47	12%	Communications & Media	11	3%
Administration & Management	42	11%	Languages	11	3%
Health & Medicine	35	9%	Law	11	3%
Computing & ICT	30	8%	Teaching	10	3%
Engineering	22	6%	Performing Arts	9	2%
Sport, Leisure & Sport Science	20	5%	Finance	7	2%
Construction	17	4%	Animals, Land & Environment	6	2%
Hospitality, Catering & Tourism	14	4%	Other	5	1%

**Table 15: Further Education Course Information**

Course Area	Total	%	Course Area	Total	%
General Education (Highers, etc)	29	12%	Administration & Management	15	6%
Social, Caring & Advisory Services	29	12%	Personal Dev. & Prep Courses	15	6%
Performing Arts	23	9%	Engineering	15	6%
Hairdressing & Beauty	22	9%	Art and Design	13	5%
Hospitality, Catering & Tourism	19	8%	Construction	13	5%
Computing & ICT	17	7%	Animals, Land & Environment	9	4%
Sport, Leisure & Sport Science	17	7%	Other	11	4%

## Skills Development Scotland East Lothian School Leaver Destination Report 2009-10

This is the 3<sup>rd</sup> year that SDS has gathered fuller data, across Scotland, about the course areas entered by school leavers. It shows that there has been no change in the course areas entered by leavers who enter higher education and the top four choices remain static. Arts and social science based subjects are the most popular followed by science and mathematics.

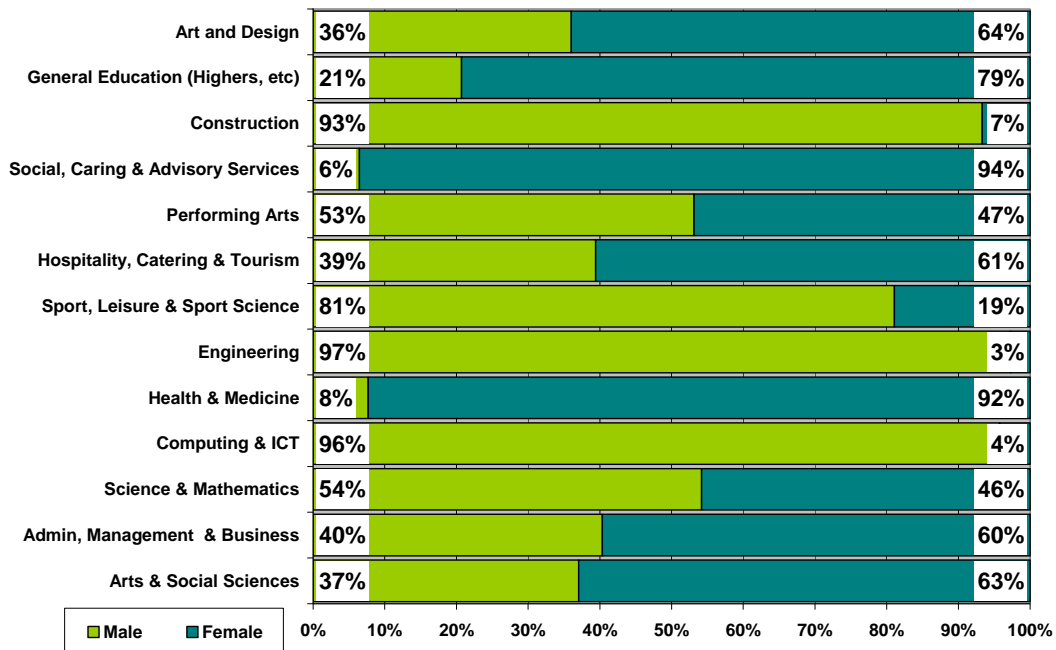
Within further education, the top two courses are General Education and Social/Caring related courses e.g. childcare or social care.

**Table 16: Course Information by Gender**

Course Area	Male		Female	
	Total	%	Total	%
Arts & Social Sciences	30	10%	51	15%
Administration & Management	23	8%	34	10%
Science & Mathematics	26	9%	22	7%
Computing & ICT	45	15%	*	*
Health & Medicine	*	*	36	11%
Engineering	36	12%	*	*
Sport, Leisure & Sport Science	30	10%	7	2%
Hospitality, Catering & Tourism	13	4%	20	6%
Performing Arts	17	6%	15	5%
Social, Caring & Advisory Services	*	*	29	9%
Construction	28	9%	*	*
General Education (Highers, etc)	6	2%	23	7%
Art and Design	9	3%	16	5%
Hairdressing & Beauty	*	*	22	7%
Animals, Land & Environment	7	2%	8	2%
Personal Dev. & Prep Courses	9	3%	6	2%
Communications & Media	6	2%	6	2%
Languages	*	*	9	3%
Law	5	2%	6	2%
Teaching	*	*	9	3%
Finance	*	*	5	2%
Garage Services	*	*	*	*
Sales & Marketing	*	*	*	*
Clothing & Textile Operations	*	*	*	*

Courses with less than 5 leavers have been suppressed

Table 17: Gender split within the course areas in both FE/HE



Computing is the most popular choice with male leavers at **15%** with Engineering the second most popular choice (**12%**). In comparison, Arts & Social Sciences is the most popular choice with females (**15%**), followed by Health and Medicine (**11%**).

**Section 2.2: Employment**

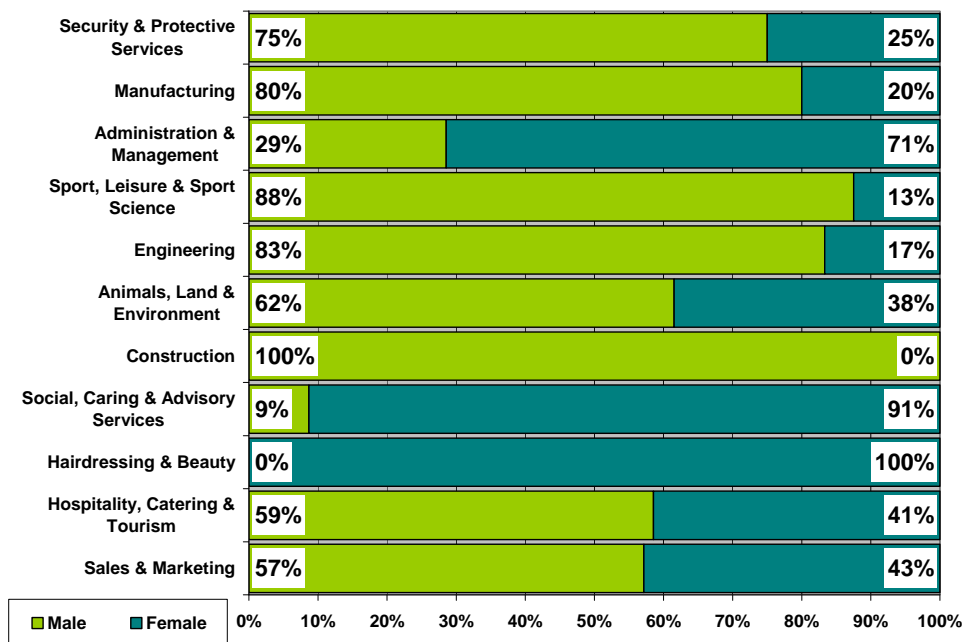
**Employment:** This category includes those who are employed and who are in receipt of payment from their employers. It includes young people undertaking training in employment through Skillseekers and Modern Apprenticeships. **219** young people entered Employment and analysis can be provided on **99% (216)** of those entering employment for whom we hold information about the occupational area entered.

**Table 18: Those entering Employment by Occupational Area**

Occupational Area	Male		Female	
	Total	%	Total	%
Sales & Marketing	28	25%	21	21%
Hospitality, Catering & Tourism	24	21%	17	17%
Hairdressing & Beauty	*	*	24	24%
Social, Caring & Advisory Services	*	*	21	21%
Construction	16	14%	*	*
Animals, Land & Environment	8	7%	5	5%
Engineering	10	9%	*	*
Sport, Leisure & Sport Science	7	6%	*	*
Administration & Management	*	*	5	5%
Manufacturing	*	*	*	*
Security & Protective Services	*	*	*	*
Transport & Distribution	*	*	*	*
Garage Services	*	*	*	*
Computing & ICT	*	*	*	*
Finance	*	*	*	*
Health & Medicine	*	*	*	*
Laboratory technician	*	*	*	*

Occupational areas with less than 5 leavers have been suppressed

**Table 19: Gender split within the top employment areas**



The most popular area of employment entered by all school leavers continues to be sales & marketing, including retail operations, with **23%** of those entering employment working in this sector. The second most popular area was hospitality, catering and tourism at **19%**.

The most popular occupational area of males is sales and marketing at **25%**, followed by hospitality, catering and tourism at **21%**.

Hairdressing and beauty (**24%**) is the most popular choice for females. Sales and Marketing, including retail operations, and social, caring & advisory services are the second most popular occupational areas for female leavers at **21%**.

## Section 3: Other Destinations

School leavers who do not achieve a positive destination on leaving school are known as the MCMC group and are key customers for Skills Development Scotland and our partner organisations. The SLDR is a snapshot in time and should only be used as an indicator.

**Unemployed and seeking employment or training:** This category includes those who are in contact with SDS and are known by them to be seeking employment or training. This is based on regular contact between SDS and the client. This does not refer to the definition of 'unemployed' used by the Benefits Agency to calculate published unemployment rates.

**Unemployed and not seeking employment or training:** This category includes all those individuals who are not seeking employment or training for a range of reasons. These individual circumstances may involve sickness, prison, pregnancy, caring for children or other dependents or taking time out.

### Section 3.1 Unemployed Seeking

The table provides a comparison of the percentage of unemployed seeking clients with specific characteristics as opposed to the rate of the full SLDR cohort

**Table 20: Client Characteristics**

Characteristics	% of Full SLDR	% of Unemployed Seeking
<b>Gender</b>		
Male	51%	68%
Female	49%	32%
<b>Stage Left School</b>		
Statutory Summer Leaver	13%	32%
Statutory Winter Leaver	9%	17%
Post Statutory Leaver	78%	52%
<b>Qualifications on Leaving School<sup>v</sup></b>		
Access 1 / No formal Qualifications	0%	0%
Access 2&3/Foundation Stand. Grade	2%	11%
General Standard Grade/ Intermediate1	16%	37%
Credit Standard Grade/ Intermediate 2	27%	27%
Highers/Advanced Higher	53%	20%
Unknown	2%	4%
<b>Health And Additional Support Needs<sup>vi</sup></b>		
Looked After at Home/ Looked after away from home <sup>vii</sup>	4%	10%
Additional Support Plan Recorded <sup>viii</sup>	2%	2%
Health Factor/Additional Support Need Identified <sup>ix</sup>	7%	16%

Table 20: Client Characteristics (cont)

Characteristics		% of Full SLDR	% of Unemployed Seeking
<b>SIMD Decile Ranking /Deprivation (SIMD 2009)</b>			
<b>Most deprived</b>	1	0%	0%
	2	4%	9%
	3	9%	13%
	4	9%	15%
	5	13%	19%
	6	11%	8%
	7	19%	13%
	8	15%	11%
	9	9%	6%
<b>Least Deprived</b>	10	10%	5%
	Unknown	0%	0%

- Male leavers account for **51%** of the leaving cohort, however, they account for **68%** of leavers reported as unemployed seeking.
- Statutory winter leavers represent only **9%** of the whole SLDR cohort but are disproportionately represented within leavers reported as unemployed seeking at **17%**, as are statutory summer leavers with **13%** and **32%** respectively.
- The largest proportion of unemployed seeking leavers have general level standard grades.
- Leavers who had a period of being looked after at home or away from home are disproportionately represented within the leavers reported as unemployed seeking as they represent **4%** of the total cohort but account for **10%** of the unemployed seeking cohort.

Table 21: Leavers by Intermediate Data zone

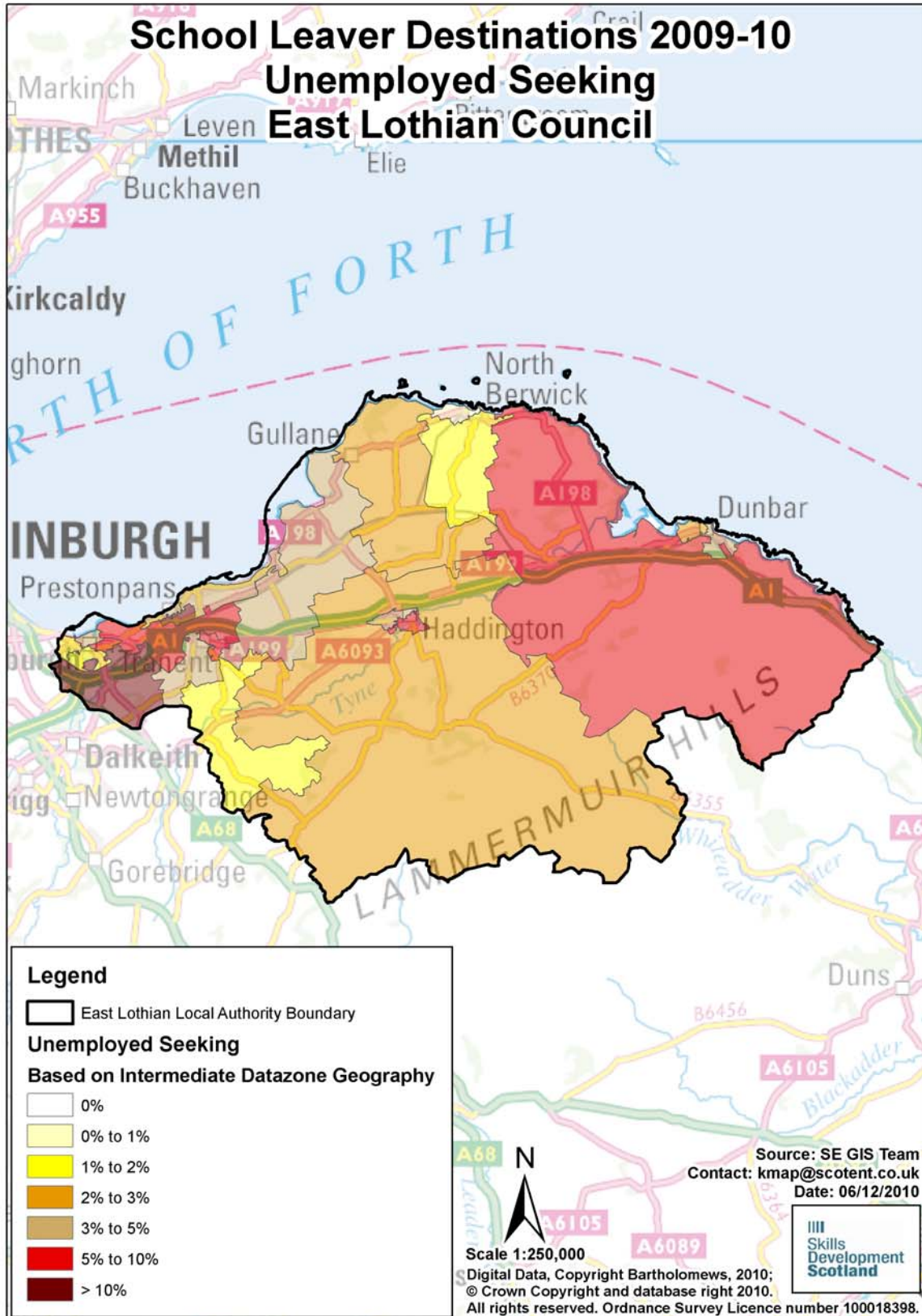
There were **114** leavers from East Lothian schools who were reported as unemployed seeking in the SLDR. By using postcodes, we were able to identify areas within the authority where unemployed school leavers were living. However, at the snapshot, **2** of the leavers were living outside the local authority area but a further **10** unemployed seeking school leavers from other local authority schools were residing within the local authority boundaries. The analysis below is based on **122** leavers residing in the authority and who SDS held postcode information for. The table below shows the intermediate data zones with the highest percentage of unemployed leavers.

Intermediate Data zone <sup>x</sup>	Total	%	Intermediate Data zone	Total	%
S02000290 (IZ Three)	12%	15	S02000302 (IZ Fifteen)	6%	7
S02000300 (IZ Thirteen)	11%	14	S02000303 (IZ Sixteen)	5%	6
S02000298 (IZ Eleven)	9%	11	S02000291 (IZ Four)	4%	5
S02000294 (IZ Seven)	7%	8	S02000296 (IZ Fourteen)	4%	5
S02000297 (IZ Ten)	7%	8	S02000301 (IZ Nine)	4%	5
S02000295 (IZ Eight)	6%	7	S02000304 (IZ Seventeen)	4%	5

Intermediate Data zone areas with less than 5 leavers have been suppressed

**Table 22: Destinations of School Leavers: % Unemployed Seeking, 2009/10**

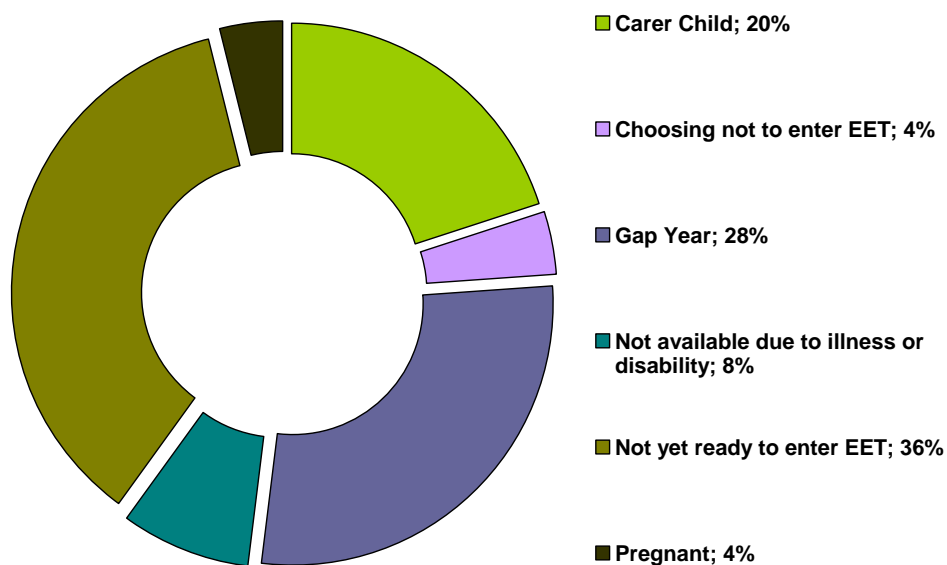
The map shows the intermediate data zones where the 122 leavers who were residing within the local authority boundary reside. Percentages have been calculated as a proportion of the number of leavers reported



### Section 3.2 Unemployed NOT Seeking

There were 25 school leavers within this category.

Table 23: Individual Circumstances of those Unemployed NOT Seeking



### Section 3.3 Unknown

There were 7 school leavers whose current destination was unknown at the time of SLDR.

Table 24: Destinations by School, Percentage

East Lothian Council SLDR 2009 - 2010											
School	Higher Education	Further Education	Training	Employment	Voluntary Work	Unemployed Seeking	Unemployed NOT Seeking	Not Known	Total Leavers	% Pos	% Other
Dunbar Grammar School	43.4%	26.2%	4.1%	13.9%	0.0%	9.0%	3.3%	0.0%	<b>122</b>	<b>87.7%</b>	12.3%
Knox Academy	45.9%	20.0%	3.0%	17.8%	0.7%	10.4%	0.7%	1.5%	<b>135</b>	<b>87.4%</b>	12.6%
Musselburgh Grammar School	25.1%	28.5%	7.9%	22.6%	0.0%	13.4%	1.7%	0.8%	<b>239</b>	<b>84.1%</b>	15.9%
North Berwick High School	49.7%	13.3%	1.2%	22.5%	1.2%	7.5%	4.0%	0.6%	<b>173</b>	<b>87.9%</b>	12.1%
Preston Lodge High School	32.7%	24.1%	5.5%	22.6%	0.0%	13.1%	1.0%	1.0%	<b>199</b>	<b>84.9%</b>	15.1%
Ross High School	34.4%	26.9%	3.8%	21.5%	0.0%	9.7%	3.8%	0.0%	<b>186</b>	<b>86.6%</b>	13.4%
<b>East Lothian Council</b>	<b>37.0%</b>	<b>23.5%</b>	<b>4.6%</b>	<b>20.8%</b>	<b>0.3%</b>	<b>10.8%</b>	<b>2.4%</b>	<b>0.7%</b>	<b>1,054</b>	<b>86.1%</b>	13.9%

## Background Notes:

---

<sup>i</sup> **Positive Destinations:** includes higher education, further education, training, employment and voluntary work. See text above for explanation of each destination heading.

<sup>ii</sup> **The Scottish Index of Multiple Deprivation (SIMD):** SIMD identifies small area concentrations of multiple deprivation across all of Scotland in a consistent way. SDS uses a file created by Scottish Neighbourhood Statistics to identify SIMD based on an individual leaver's postcode. The leaver's postcode is based on the last known address of the leaver as recorded on our client management system. Where there were gaps in the data held on our CMS, the last known address supplied in the annual import of pupil details has been used. As the last known postcode is used it may be that a leaver from one local authority was living in another local authority at the time of the return. Therefore, the SIMD relates to where a leaver was living and not the concentration of SIMD within a local authority.

<sup>iii</sup> **Stage of Leaving:** A **statutory summer leaver** is a school leaver who chooses to leave school at the earliest opportunity (31<sup>st</sup> May) when they become eligible to leave school i.e. their 16<sup>th</sup> birthday falls on or between 1<sup>st</sup> March and 30<sup>th</sup> September in their year of leaving. A **statutory winter leaver** is a school leaver who chooses to leave school at the earliest opportunity when they become eligible to leave school i.e. their 16<sup>th</sup> birthday falls between 1<sup>st</sup> October and the last day in February. A **post statutory leaver** is a school leaver who chose to remain at school past their statutory leave date e.g. a winter leaver who would have been eligible to leave at the winter leave date but choose to remain at school until the summer leave date. Included in this group are leavers who have past their statutory leave date and have left school at any stage throughout the year.

<sup>iv</sup> **Institutions:** through our follow up of leavers, we confirm Further and Higher Education destinations and as part of the process we request further information about the institution a leaver is attending. This is not a requirement of the Scottish Government and the information displayed is based on the recorded detail on Insight, the SDS

<sup>v</sup> **Qualifications on leaving school:** This information is based on pre-appeal information from the Scottish Qualifications Agency where SDS received information about a leaver's qualifications and a robust match of records was made. Where no match was made the qualification level has been gathered through our interaction with individuals.

<sup>vi</sup> **Qualifications on leaving school:** This information is based on pre-appeal information from the Scottish Qualifications Agency where SDS received information about a leaver's qualifications and a robust match of records was made. Where no match was made the qualification level has been gathered through our interaction with individuals.

<sup>vii</sup> **Looked After at Home/ Looked after away from home:** This refers to recent school leavers that SDS has recorded information that they had an episode of being looked after at home or looked after away from home. This information is gathered in a variety of ways including local SDS contact with Social Work departments, data received through the school import process or via direct contact with individuals. It is recognised that this information may not be complete when compared with similar data from social work services departments. However SDS is working with the Scottish Government and local authorities to look at improving the sharing of information in respect of these young people therefore the figures used are indicative.

<sup>viii</sup> **Additional Support Plan Recorded:** SDS receives data from all local authority schools and school centres with pupils in stages S1-S6 or special schools to import into our client management system. We receive information about those who have co-ordinated support plans (CSP) and individualised educational programmes. We also gather information directly from individuals and via our ongoing work with schools. We acknowledge that the data may vary from that held by local authorities therefore the figures used are indicative.

<sup>ix</sup> **Health Factor/Additional Support Need Identified:** SDS receives data from all local authority schools and school centres with pupils in stages S1-S6 or special schools to import into our client management system. We receive information about those who have identified additional support needs. We also gather information directly from individuals and via our ongoing work with schools. We acknowledge that the data may vary from that held by local authorities therefore the figures used are indicative.

<sup>x</sup> **Intermediate Data zone Geography:** The data zone is the key small area statistical geography in Scotland. The intermediate geography is built up from data zones and can be used to disseminate statistics that are not suitable for release at the data zone level. Due to the small number of individuals it has been decided to use the intermediate level geography. There are 1235 intermediate zones in Scotland, containing on average 4000 household residents and these have been designed to respect local authority boundaries as at 2001 Census.