

16+ Information Sharing

What is the 16+Data Hub?

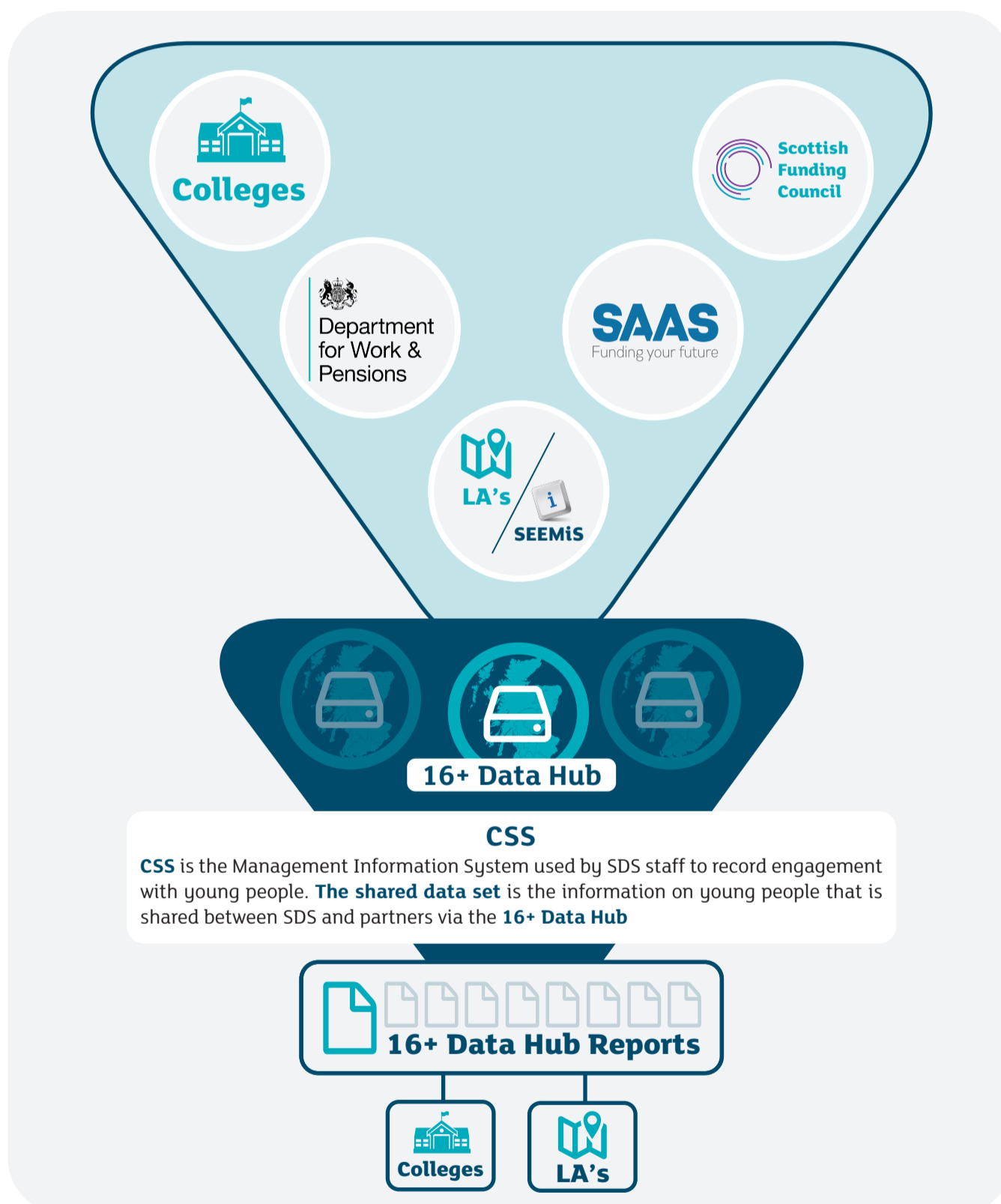


16+ Data Hub is a secure web portal that partners can access to upload files (data for sharing) and to download 16+ Data Hub reports for their Local Authority area or College



Local Authorities + Colleges provide data on all current pupils/ students. In return, LAs and Colleges have access to 16+ Data Hub reports from the shared data set, which also includes young people who used to attend school or college up to their 25th Birthday

How does it work?



16+ Data Hub Reports contain information on young people tailored to Local Authorities and Colleges specific needs



SEEMIS is the management information system used by all LA schools in Scotland to enter data on their pupils



Our Partners

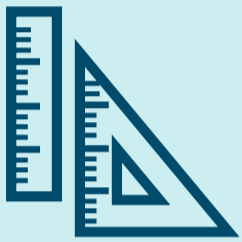
SAAS focuses on Higher Education enrolments and withdrawals. **DWP** provides information on 18-24 year olds claiming benefits. **SDS** and **SFC** share data to determine the status of young people once they have left college

Why do we have the 16+Data Hub?



Opportunities for All

The **Opportunities for All** policy agenda is the Scottish Government's commitment to an offer of a place in learning or training to every 16-19 year old not in employment, education or training; The **16+ Data Hub** supports this ambition by helping identify those young people without an offer.



The Participation Measure

The **Participation Measure** was developed jointly between the Scottish Government and SDS and is used to provide the status of 16-19 year olds; it is published annually.



The Scottish Government's Goal is to reduce **Youth Unemployment by 40% by 2021**

The current Youth Unemployment rate in Scotland is **15.8%**

Education
Training
Employment



Who is Involved?



The **Post-16 Education (Scotland) Act 2013** and two Government Frameworks (Data Practice, Policy and Practice) place a duty on key partners such as LAs, Colleges, SFC and SAAS to share information with SDS on all 16-24 year olds in Scotland. DWP are not part of the legislation but have data sharing arrangements in place.



Key Audiences

- SDS colleagues
- Scottish Government colleagues

- Schools
- Head Teachers
- Depute Head Teachers
- Guidance Teachers

- LA Departments
- Colleges
- Community Learning & Development
- The Voluntary Sector
- Social Workers



Information Sharing Partners



Partnership Working

Effective partnership working and engagement are fundamental to the quality of information being shared through the **16+ Data Hub**. This supports young people, local partnerships and strategic planning.

A wide range of colleagues from key partners bring together their individual requirements and responsibilities in a united and streamlined approach, for example, schools updating information, communications from the SDS Data Sharing team, partners planning their provision and advisers supporting young people. The combined support from all partners ensures young people are **accessing** the best opportunities.

The Benefits



Research shows participating in further learning/benefits beyond age 16 improves young people's long-term career prospects. The 16+ Data Hub identifies young people who are not participating in learning, training or work, allowing for focused and targeted service delivery by SDS and key partners



Information sharing enables effective ongoing tracking and monitoring of young people to ensure they have access to the relevant opportunities



Appropriate **interventions** ensure young people receive effective support and services tailored to their needs



Information sharing allows **LAs and Colleges** to be proactive and address potential issues which affect the support provided to young people



Information sharing is pivotal to the **OfA Agenda** as it supports the transition of young people into further or higher education, employment and training

Supporting Young People to Find Suitable Opportunities

